

Division EAST

2933  
Southeast Division Street

DRAWING TITLE  
**FIRST FLOOR - MECH PLAN**

REVISIONS

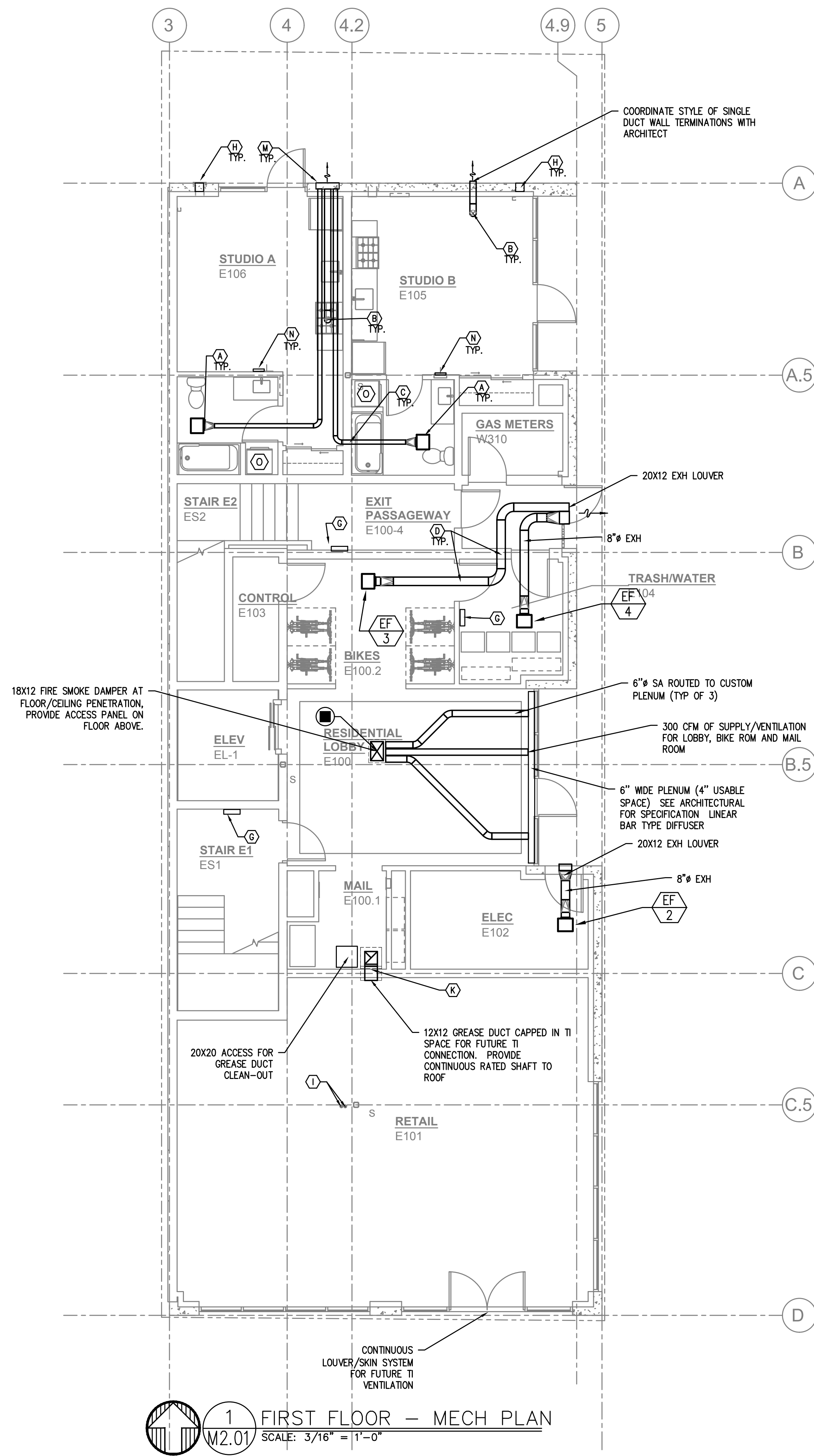
© MARK W. WILLIAM KAVEN ARCHITECTURE  
This document is an instrument of service prepared by William Kaven Architecture, which owns all common law, statutory and other rights with regard to it, including copyright. This document may be used only for permitted purposes in connection with the indicated project. Other uses are prohibited without the express written consent of William Kaven Architecture.

DATE	MARCH 05, 2021
JOB NO.	19.01

DRAWING NO.

**M2.01**

CONSTRUCTION



**KEY NOTES:**

- (A) PANASONIC WHISPERGREEN CEILING FAN WITH 4" DUCT TO ROOF OR EXTERIOR WALL TERMINATION VIA SOFFIT(S) PROVIDED. BACK DRAFT DAMPER INTEGRAL TO FAN, FAN TO OPERATE AT LOW SPEED CONTINUOUS (30 CFM) AND INCREASE TO 80 CFM WHEN BUILT-IN MOTION SENSOR IS ACTIVATED. INSULATED FINAL 5' OF DUCTWORK. NO DUCTWORK SHALL PENETRATE RATED ASSEMBLY. SEE (1) (M601) (EF 1)
- (B) 6" HOOD DUCT TO ROOF/EXTERIOR WALL TERMINATION VIA SOFFIT(S) PROVIDED. BACK DRAFT DAMPER INTEGRAL TO HOOD. INSULATED FINAL 5' OF DUCTWORK. NO DUCTWORK SHALL PENETRATE RATED ASSEMBLY. HOOD FAN TO OPERATE INTERMITTENTLY.
- (C) FOR 4" UL FIRE PENETRATION DETAIL, SEE (2) (M600) SEE (2) (M2.02) FOR ALL FLOOR CEILING PENETRATIONS
- (D) FOR 6" FIRE PENETRATION DETAIL, SEE (1) (M600)
- (E) 4" BATH EXHAUST AND 6" RANGE EXHAUST UP TO TO ROOF.
- (F) LINE SETS FOR FUTURE TI SPLIT SYSTEMS, FROM LEVEL 1 RETAIL SPACE TO ROOF.
- (G) 1.5KW WALL HEATER QMARK AWH4404F OR EQUAL. EQUIPMENT BY ELECTRICAL CONTRACTOR. SHOWN FOR REFERENCE ONLY.
- (H) FOR AC PORT DETAIL, SEE (4) (M601)
- (I) FOR REFRIGERANT ROOF PENETRATION, SEE (3) (M601)
- (J) FOR ROOFTOP OUTLET HOOD SEE (5) (M601)
- (K) 12X12 GREASE EXHAUST (WITH FIRE WRAP IN 22X22 SHAFT SPACE) ROUTED FROM ROOF (CAPPED) TO TI SPACE (CAPPED FOR FUTURE TI). PROVIDE VENTED CURB ADAPTER AND CAP FOR FUTURE GREASE EXHAUST FAN.
- (L) SUPPLY AIR OR RETURN GRILLE, SIZED FOR BOTH FREE AREA AND FOR ACTUATOR ACCESS, SEE (1) (M602) FOR GRILLE INSTALLATION, AND SEE (2) (M602) FOR TYPICAL F/S INSTALLATION AND CONTROLS.
- (M) EXTERIOR EXHAUST PLENUM - SEE (2) (M601) MAINTAIN 36" CLEAR TO OPERABLE WINDOWS AND DOORS.
- (N) 1.5KW (2 KW IN STUDIO UNITS) CADET WALL HEATERS FOR LIVING UNITS, 120V. EQUIPMENT BY ELECTRICAL CONTRACTOR. SHOWN FOR REFERENCE ONLY. PROVIDE WILL WALL MOUNTED T-STAT
- (O) CONDENSING DRYERS - NO VENTING REQUIRED.

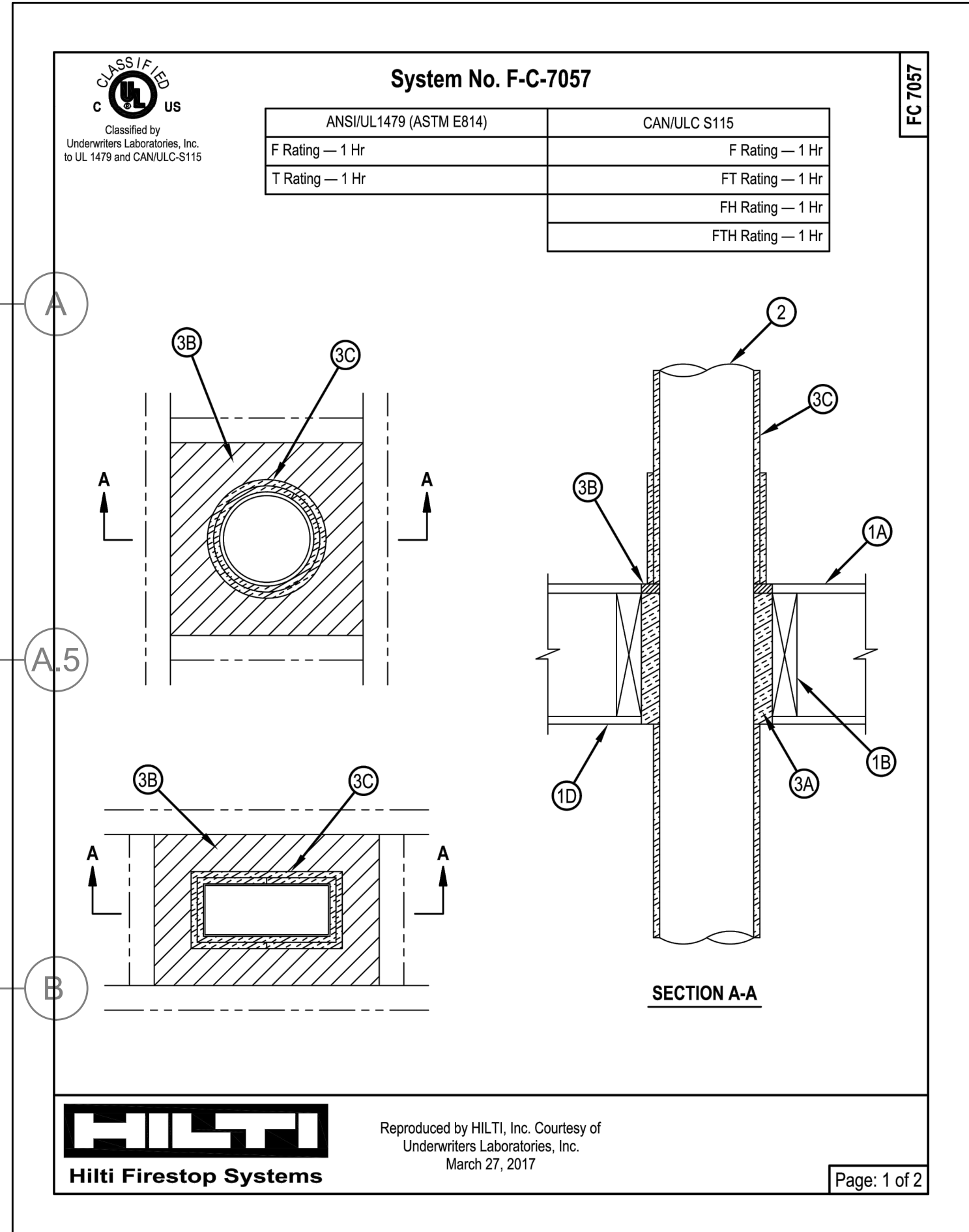
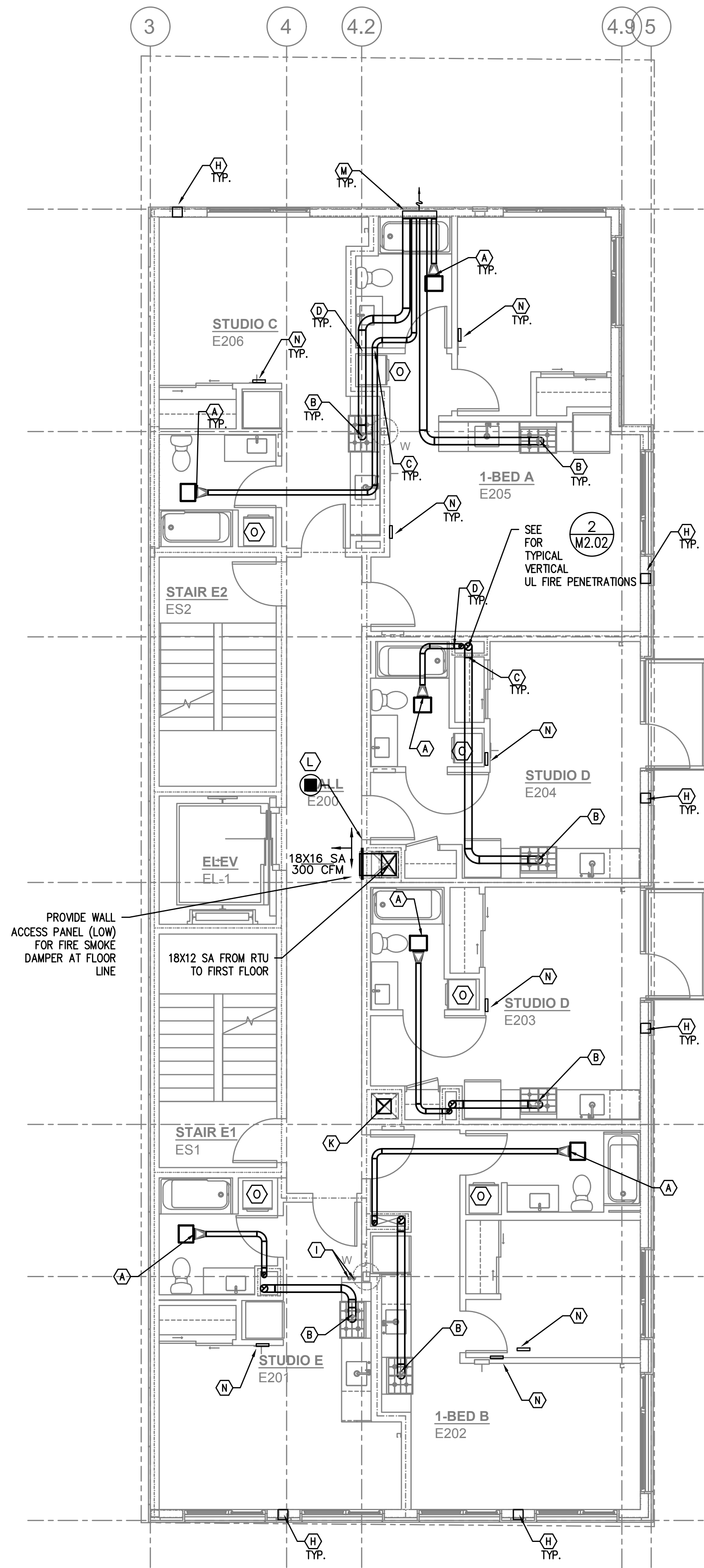
**VENTILATION CALCULATIONS:**

ALL DWELLING UNITS ARE VENTILATED BY NATURAL VENTILATION WITH OPERABLE WINDOWS (NO LIMITERS), BATHROOM EXHAUST FANS RUN CONTINUOUSLY (SIZED PER ASHRAE 62.2).

COMMON SPACES AND HALLWAYS ARE VENTILATED BY RTU'S SIZED TO EXCEED THE MINIMUM 0.06 CFM/SQ FT REQUIREMENT

SEE VENTILATION SCHEDULES FOR OTHER UNITS





2 FIRE PENETRATION DETAIL – VERTICAL DUCTS  
M2.02

KEY NOTES:

- (A) — PANASONIC WHISPERGREEN CEILING FAN WITH 4" Ø DUCT TO ROOF OR EXTERIOR WALL TERMINATION VIA SOFFIT(S) PROVIDED. BACK DRAFT DAMPER INTEGRAL TO FAN, FAN TO OPERATE AT LOW SPEED CONTINUOUS (30 CFM) AND INCREASE TO 80 CFM WHEN BUILT-IN MOTION SENSOR IS ACTIVATED. INSULATED FINAL 5' OF DUCTWORK. NO DUCTWORK SHALL PENETRATE RATED ASSEMBLY. SEE (1) (M601) (EF 1)
- (B) — 6" Ø HOOD DUCT TO ROOF/EXTERIOR WALL TERMINATION VIA SOFFIT(S) PROVIDED. BACK DRAFT DAMPER INTEGRAL TO HOOD. INSULATED FINAL 5' OF DUCTWORK. NO DUCTWORK SHALL PENETRATE RATED ASSEMBLY. HOOD FAN TO OPERATE INTERMITTENTLY.
- (C) — FOR 4" UL FIRE PENETRATION DETAIL, SEE (2) (M600) SEE (2) (M2.02) FOR ALL FLOOR CEILING PENETRATIONS
- (D) — FOR 6" FIRE PENETRATION DETAIL, SEE (1) (M600)
- (E) — 4" BATH EXHAUST AND 6" RANGE EXHAUST UP TO TO ROOF.
- (F) — LINE SETS FOR FUTURE TI SPLIT SYSTEMS, FROM LEVEL 1 RETAIL SPACE TO ROOF.
- (G) — 1.5KW WALL HEATER QMARK AWH4404F OR EQUAL. EQUIPMENT BY ELECTRICAL CONTRACTOR. SHOWN FOR REFERENCE ONLY.
- (H) — FOR AC PORT DETAIL, SEE (4) (M601)
- (I) — FOR REFRIGERANT ROOF PENETRATION, SEE (3) (M601)
- (J) — FOR ROOFTOP OUTLET HOOD SEE (5) (M601)
- (K) — 12X12 GREASE EXHAUST (WITH FIRE WRAP IN 22X22 SHAFT SPACE) ROUTED FROM ROOF (CAPPED) TO TI SPACE (CAPPED FOR FUTURE TI). PROVIDE VENTED CURB ADAPTER AND CAP FOR FUTURE GREASE EXHAUST FAN.
- (L) — SUPPLY AIR OR RETURN GRILLE, SIZED FOR BOTH FREE AREA AND FOR ACTUATOR ACCESS, SEE (1) (M602) FOR GRILLE INSTALLATION, AND SEE (2) (M602) FOR TYPICAL F/S INSTALLATION AND CONTROLS.
- (M) — EXTERIOR EXHAUST PLENUM — SEE (2) (M601) MAINTAIN 36" CLEAR TO OPERABLE WINDOWS AND DOORS.
- (N) — 1.5KW (2 KW IN STUDIO UNITS) CADET WALL HEATERS FOR LIVING UNITS, 120V. EQUIPMENT BY ELECTRICAL CONTRACTOR. SHOWN FOR REFERENCE ONLY. PROVIDE WILL WALL MOUNTED T-STAT
- (O) — CONDENSING DRYERS — NO VENTING REQUIRED.

VENTILATION CALCULATIONS:

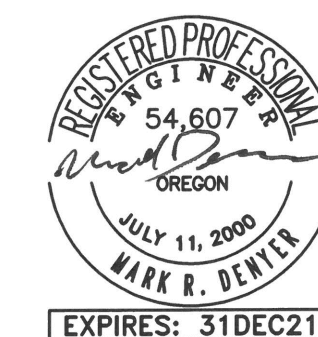
ALL DWELLING UNITS ARE VENTILATED BY NATURAL VENTILATION WITH OPERABLE WINDOWS (NO LIMITERS), BATHROOM EXHAUST FANS RUN CONTINUOUSLY (SIZED PER ASHRAE 62.2).

COMMON SPACES AND HALLWAYS ARE VENTILATED BY RTU'S SIZED TO EXCEED THE MINIMUM 0.06 CFM/SQ FT REQUIREMENT

SEE VENTILATION SCHEDULES FOR OTHER UNITS

1 SECOND FLOOR – MECH PLAN  
M2.02 SCALE: 3/16" = 1'-0"





Division EAST

2933  
Southeast Division Street

DRAWING TITLE  
**THIRD FLOOR -  
MECH PLAN**

REVISIONS

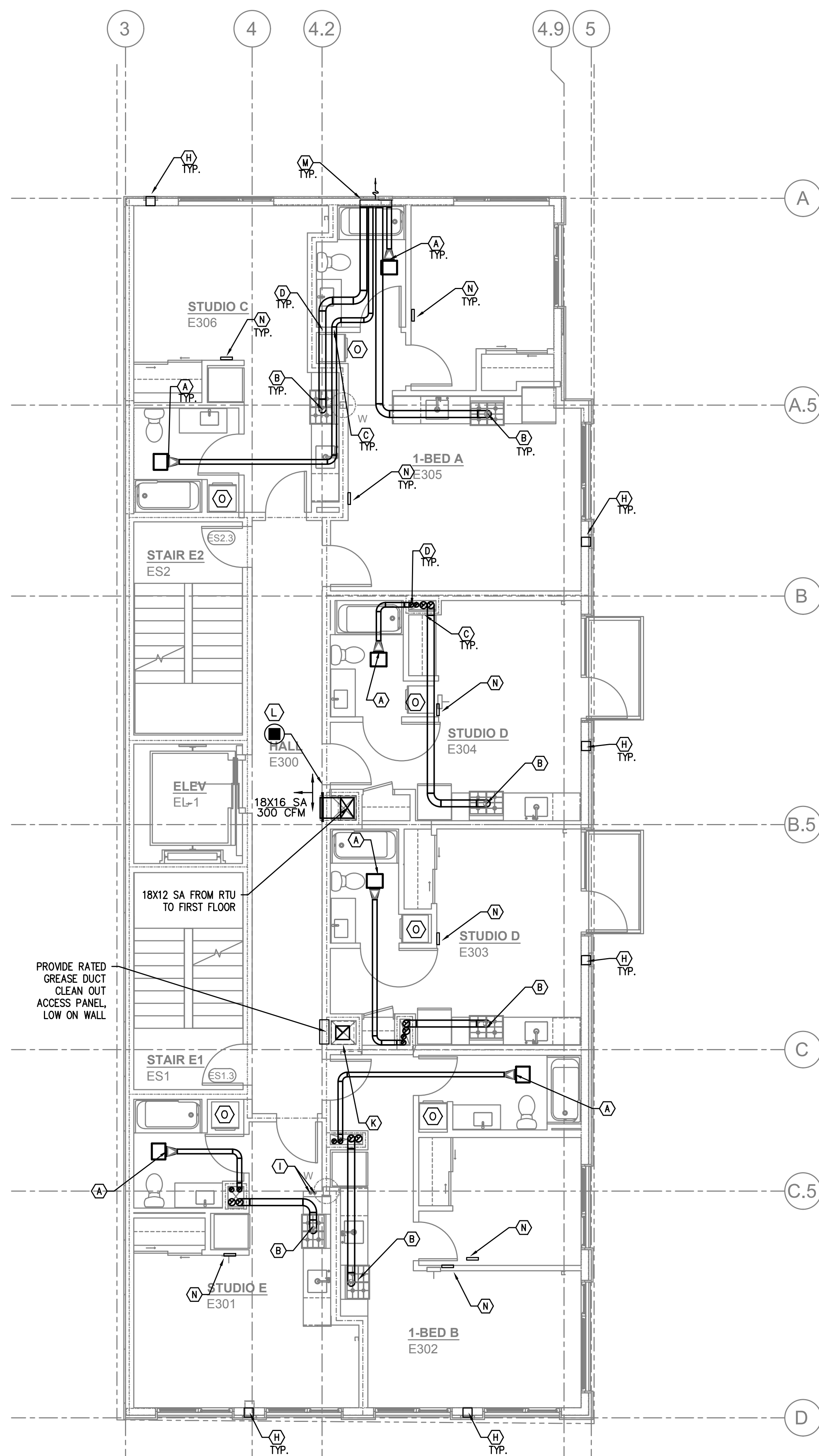
© 2020 WILLIAM KAVEN ARCHITECTURE  
This document is an instrument of service prepared by  
William Kaven Architecture, which owns all common  
law, statutory and other rights with regard to it,  
including copyright. This document may be used only  
for permitted purposes in connection with the indicated  
project. Other uses are prohibited without the express  
written consent of William Kaven Architecture.

DATE	MARCH 05, 2021
JOB NO.	19.01

DRAWING NO.

**M2.03**

CONSTRUCTION



PROVIDE RATED  
GREASE DUCT  
CLEAN OUT  
ACCESS PANEL,  
LOW ON WALL

**KEY NOTES:**

- (A) — PANASONIC WHISPERGREEN CEILING FAN WITH 4"Ø DUCT TO ROOF OR EXTERIOR WALL TERMINATION VIA SOFFIT(S) PROVIDED. BACK DRAFT DAMPER INTEGRAL TO FAN, FAN TO OPERATE AT LOW SPEED CONTINUOUS (30 CFM) AND INCREASE TO 80 CFM WHEN BUILT-IN MOTION SENSOR IS ACTIVATED. INSULATED FINAL 5' OF DUCTWORK. NO DUCTWORK SHALL PENETRATE RATED ASSEMBLY. SEE (1) (M601) (EF 1)
- (B) — 6"Ø HOOD DUCT TO ROOF/EXTERIOR WALL TERMINATION VIA SOFFIT(S) PROVIDED. BACK DRAFT DAMPER INTEGRAL TO HOOD. INSULATED FINAL 5' OF DUCTWORK. NO DUCTWORK SHALL PENETRATE RATED ASSEMBLY. HOOD FAN TO OPERATE INTERMITTENTLY.
- (C) — FOR 4" UL FIRE PENETRATION DETAIL, SEE (2) (M600) SEE (2) (M2.02) FOR ALL FLOOR CEILING PENETRATIONS
- (D) — FOR 6" FIRE PENETRATION DETAIL, SEE (1) (M600)
- (E) — 4" BATH EXHAUST AND 6" RANGE EXHAUST UP TO TO ROOF.
- (F) — LINE SETS FOR FUTURE TI SPLIT SYSTEMS, FROM LEVEL 1 RETAIL SPACE TO ROOF.
- (G) — 1.5KW WALL HEATER QMARK AWH4404F OR EQUAL. EQUIPMENT BY ELECTRICAL CONTRACTOR. SHOWN FOR REFERENCE ONLY.
- (H) — FOR AC PORT DETAIL, SEE (4) (M601)
- (I) — FOR REFRIGERANT ROOF PENETRATION, SEE (3) (M601)
- (J) — FOR ROOFTOP OUTLET HOOD SEE (5) (M601)
- (K) — 12X12 GREASE EXHAUST (WITH FIRE WRAP IN 22X22 SHAFT SPACE) ROUTED FROM ROOF (CAPPED) TO TI SPACE (CAPPED FOR FUTURE TI). PROVIDE VENTED CURB ADAPTER AND CAP FOR FUTURE GREASE EXHAUST FAN.
- (L) — SUPPLY AIR OR RETURN GRILLE, SIZED FOR BOTH FREE AREA AND FOR ACTUATOR ACCESS, SEE (1) (M602) FOR GRILLE INSTALLATION, AND SEE (2) (M602) FOR TYPICAL F/S INSTALLATION AND CONTROLS.
- (M) — EXTERIOR EXHAUST PLENUM - SEE (2) (M601) MAINTAIN 36" CLEAR TO OPERABLE WINDOWS AND DOORS.
- (N) — 1.5KW (2 KW IN STUDIO UNITS) CADET WALL HEATERS FOR LIVING UNITS, 120V. EQUIPMENT BY ELECTRICAL CONTRACTOR. SHOWN FOR REFERENCE ONLY. PROVIDE WILL WALL MOUNTED T-STAT
- (O) — CONDENSING DRYERS - NO VENTING REQUIRED.

**VENTILATION CALCULATIONS:**

ALL DWELLING UNITS ARE VENTILATED BY NATURAL VENTILATION WITH OPERABLE WINDOWS (NO LIMITERS), BATHROOM EXHAUST FANS RUN CONTINUOUSLY (SIZED PER ASHRAE 62.2).

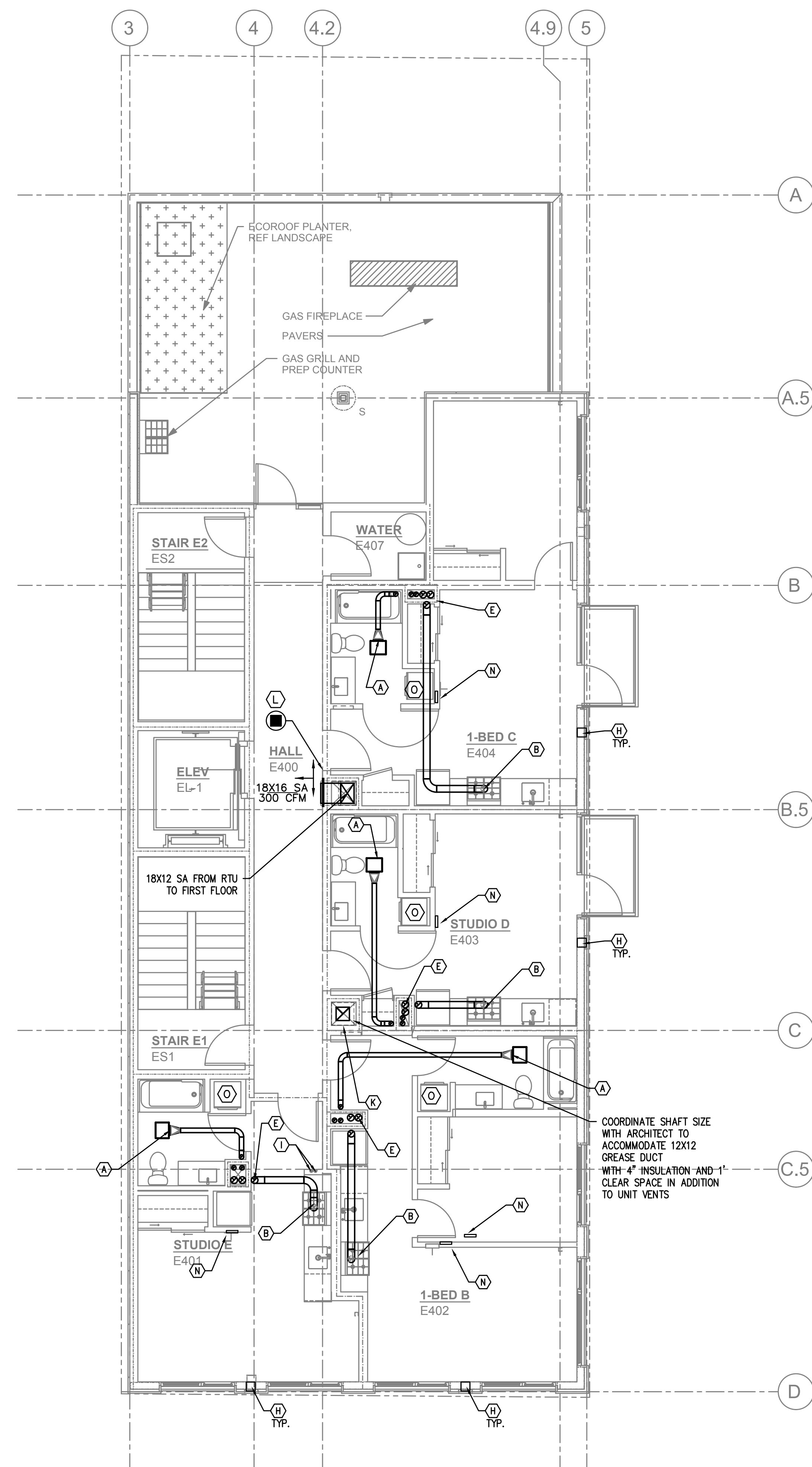
COMMON SPACES AND HALLWAYS ARE VENTILATED BY RTU'S SIZED TO EXCEED THE MINIMUM 0.06 CFM/SQ FT REQUIREMENT

SEE VENTILATION SCHEDULES FOR OTHER UNITS

1 THIRD FLOOR - MECH PLAN  
M2.03 SCALE: 3/16" = 1'-0"



Division EAST



**1** FOURTH FLOOR - MECH PLAN  
SCALE: 3/16" = 1'-0"

**KEY NOTES:**

- (A) — PANASONIC WHISPERGREEN CEILING FAN WITH 4" Ø DUCT TO ROOF OR EXTERIOR WALL TERMINATION VIA SOFFIT(S) PROVIDED. BACK DRAFT DAMPER INTEGRAL TO FAN, FAN TO OPERATE AT LOW SPEED CONTINUOUS (30 CFM) AND INCREASE TO 80 CFM WHEN BUILT-IN MOTION SENSOR IS ACTIVATED. INSULATED FINAL 5' OF DUCTWORK. NO DUCTWORK SHALL PENETRATE RATED ASSEMBLY. SEE (1) (M601) (EF 1)
- (B) — 6" Ø HOOD DUCT TO ROOF/EXTERIOR WALL TERMINATION VIA SOFFIT(S) PROVIDED. BACK DRAFT DAMPER INTEGRAL TO HOOD. INSULATED FINAL 5' OF DUCTWORK. NO DUCTWORK SHALL PENETRATE RATED ASSEMBLY. HOOD FAN TO OPERATE INTERMITTENTLY.
- (C) — FOR 4" UL FIRE PENETRATION DETAIL, SEE (2) (M600) SEE (2) (M2.02) FOR ALL FLOOR CEILING PENETRATIONS
- (D) — FOR 6" FIRE PENETRATION DETAIL, SEE (1) (M600)
- (E) — 4" BATH EXHAUST AND 6" RANGE EXHAUST UP TO TO ROOF.
- (F) — LINE SETS FOR FUTURE TI SPLIT SYSTEMS, FROM LEVEL 1 RETAIL SPACE TO ROOF.
- (G) — 1.5KW WALL HEATER QMARK AWH4404F OR EQUAL. EQUIPMENT BY ELECTRICAL CONTRACTOR. SHOWN FOR REFERENCE ONLY.
- (H) — FOR AC PORT DETAIL, SEE (4) (M601)
- (I) — FOR REFRIGERANT ROOF PENETRATION, SEE (3) (M601)
- (J) — FOR ROOFTOP OUTLET HOOD SEE (5) (M601)
- (K) — 12X12 GREASE EXHAUST (WITH FIRE WRAP IN 22X22 SHAFT SPACE) ROUTED FROM ROOF (CAPPED) TO TI SPACE (CAPPED FOR FUTURE TI). PROVIDE VENTED CURB ADAPTER AND CAP FOR FUTURE GREASE EXHAUST FAN.
- (L) — SUPPLY AIR OR RETURN GRILLE, SIZED FOR BOTH FREE AREA AND FOR ACTUATOR ACCESS, SEE (1) (M602) FOR GRILLE INSTALLATION, AND SEE (2) (M602) FOR TYPICAL F/S INSTALLATION AND CONTROLS.
- (M) — EXTERIOR EXHAUST PLENUM - SEE (2) (M601) MAINTAIN 36" CLEAR TO OPERABLE WINDOWS AND DOORS.
- (N) — 1.5KW (2 KW IN STUDIO UNITS) CADET WALL HEATERS FOR LIVING UNITS, 120V. EQUIPMENT BY ELECTRICAL CONTRACTOR. SHOWN FOR REFERENCE ONLY. PROVIDE WILL WALL MOUNTED T-STAT
- (O) — CONDENSING DRYERS - -NO VENTING REQUIRED.

**VENTILATION CALCULATIONS:**

ALL DWELLING UNITS ARE VENTILATED BY NATURAL VENTILATION WITH OPERABLE WINDOWS (NO LIMITERS), BATHROOM EXHAUST FANS RUN CONTINUOUSLY (SIZED PER ASHRAE 62.2).

COMMON SPACES AND HALLWAYS ARE VENTILATED BY RTU'S SIZED TO EXCEED THE MINIMUM 0.06 CFM/SQ FT REQUIREMENT

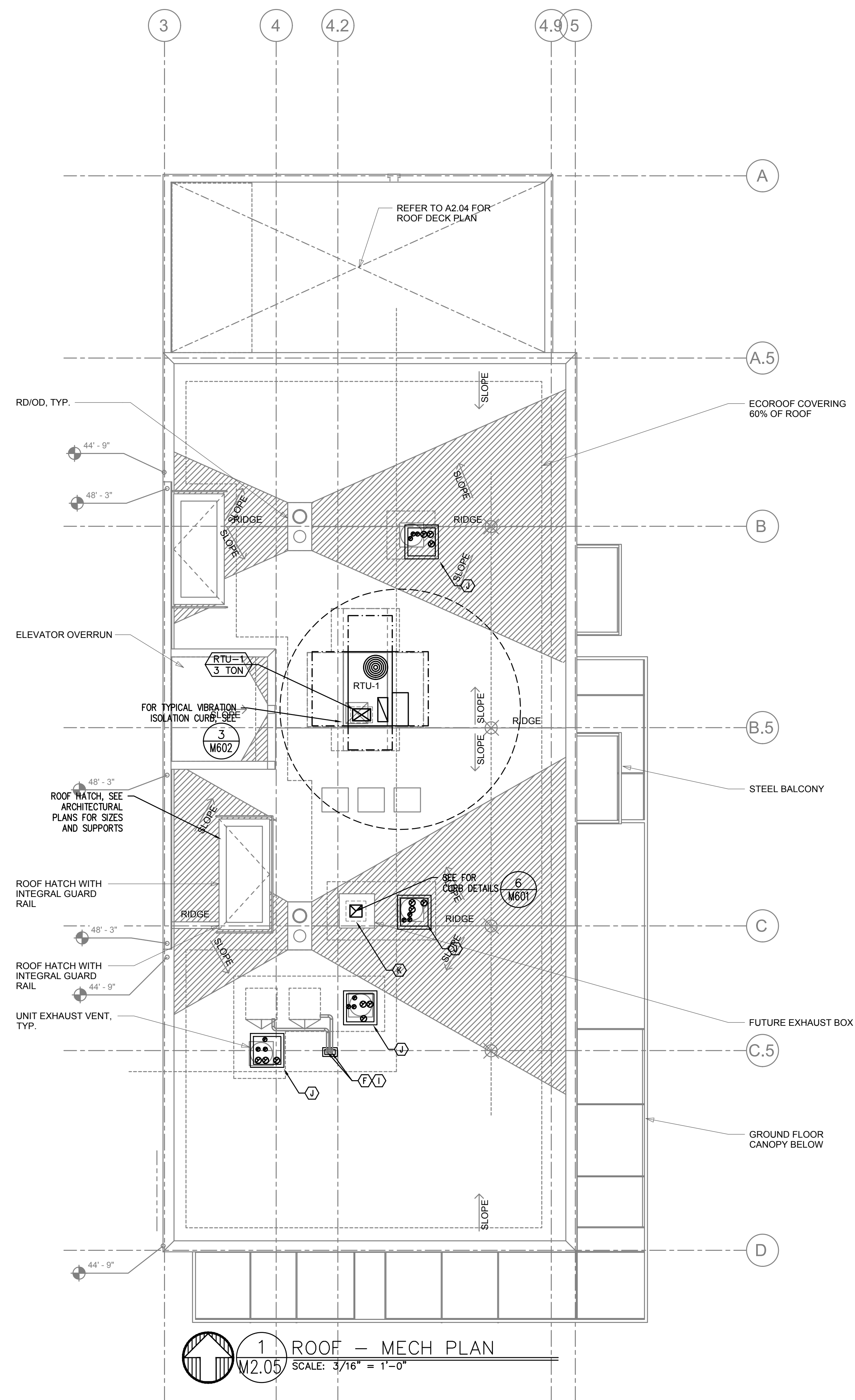
SEE VENTILATION SCHEDULES FOR OTHER UNITS

COORDINATE SHAFT SIZE WITH ARCHITECT TO ACCOMMODATE 12X12 GREASE DUCT WITH 4" INSULATION AND 1' CLEAR SPACE IN ADDITION TO UNIT VENTS





Division EAST



**KEY NOTES:**

- (A) PANASONIC WHISPERGREEN CEILING FAN WITH 4" Ø DUCT TO ROOF OR EXTERIOR WALL TERMINATION VIA SOFFIT(S) PROVIDED. BACK DRAFT DAMPER INTEGRAL TO FAN, FAN TO OPERATE AT LOW SPEED CONTINUOUS (30 CFM) AND INCREASE TO 80 CFM WHEN BUILT-IN MOTION SENSOR IS ACTIVATED. INSULATED FINAL 5' OF DUCTWORK. NO DUCTWORK SHALL PENETRATE RATED ASSEMBLY. SEE 1 M601 EF 1
- (B) 6" Ø HOOD DUCT TO ROOF/EXTERIOR WALL TERMINATION VIA SOFFIT(S) PROVIDED. BACK DRAFT DAMPER INTEGRAL TO HOOD. INSULATED FINAL 5' OF DUCTWORK. NO DUCTWORK SHALL PENETRATE RATED ASSEMBLY. HOOD FAN TO OPERATE INTERMITTENTLY.
- (C) FOR 4" UL FIRE PENETRATION DETAIL, SEE 2 M600 SEE 2 M2.02 FOR ALL FLOOR CEILING PENETRATIONS
- (D) FOR 6" FIRE PENETRATION DETAIL, SEE 1 M600
- (E) 4" BATH EXHAUST AND 6" RANGE EXHAUST UP TO TO ROOF.
- (F) LINE SETS FOR FUTURE TI SPLIT SYSTEMS, FROM LEVEL 1 RETAIL SPACE TO ROOF.
- (G) 1.5KW WALL HEATER QMARK AWH4404F OR EQUAL. EQUIPMENT BY ELECTRICAL CONTRACTOR. SHOWN FOR REFERENCE ONLY.
- (H) FOR AC PORT DETAIL, SEE 4 M601
- (I) FOR REFRIGERANT ROOF PENETRATION, SEE 3 M601
- (J) FOR ROOFTOP OUTLET HOOD SEE 5 M601
- (K) 12X12 GREASE EXHAUST (WITH FIRE WRAP IN 22X22 SHAFT SPACE) ROUTED FROM ROOF (CAPPED) TO TI SPACE (CAPPED FOR FUTURE TI). PROVIDE VENTED CURB ADAPTER AND CAP FOR FUTURE GREASE EXHAUST FAN.
- (L) SUPPLY AIR OR RETURN GRILLE, SIZED FOR BOTH FREE AREA AND FOR ACTUATOR ACCESS, SEE 1 M602 FOR GRILLE INSTALLATION, AND SEE 2 M602 FOR TYPICAL F/S INSTALLATION AND CONTROLS.
- (M) EXTERIOR EXHAUST PLENUM - SEE 2 M601 MAINTAIN 36" CLEAR TO OPERABLE WINDOWS AND DOORS.
- (N) 1.5KW (2 KW IN STUDIO UNITS) CADET WALL HEATERS FOR LIVING UNITS, 120V. EQUIPMENT BY ELECTRICAL CONTRACTOR. SHOWN FOR REFERENCE ONLY. PROVIDE WILL WALL MOUNTED T-STAT
- (O) CONDENSING DRYERS - NO VENTING REQUIRED.

**VENTILATION CALCULATIONS:**

ALL DWELLING UNITS ARE VENTILATED BY NATURAL VENTILATION WITH OPERABLE WINDOWS (NO LIMITERS), BATHROOM EXHAUST FANS RUN CONTINUOUSLY (SIZED PER ASHRAE 62.2).

COMMON SPACES AND HALLWAYS ARE VENTILATED BY RTU'S SIZED TO EXCEED THE MINIMUM 0.06 CFM/SQ FT REQUIREMENT

SEE VENTILATION SCHEDULES FOR OTHER UNITS

1 ROOF - MECH PLAN  
SCALE: 3/16" = 1'-0"





WILLIAM KAVEN ARCHITECTURE  
4075 N. WILLIAMS AVE, STUDIO 440  
PORTLAND, OR 97227  
www.williamkaven.com

PROJECT  
Consulting Engineers  
2007 S.E. Ash St.  
Portland, OR 97214  
PH: (503) 234-0548  
FAX: (503) 234-0677  
INC. WWW.MFIA-ENG.COM  
CONTACT: Mark Denyer

Division EAST

2933  
Southeast Division Street

DRAWING TITLE  
MECHANICAL  
SCHEDULES  
& DETAILS

REVISIONS

© 2020 WILLIAM KAVEN ARCHITECTURE  
This document is an instrument of service prepared by  
William Kaven Architecture, which owns all common  
law, statutory and other rights with regard to it.  
including copyright. This document may be used only  
for permitted purposes in connection with the indicated  
project. Other uses are prohibited without the express  
written consent of William Kaven Architecture.

DATE: MARCH 05, 2021  
JOB NO.: 19.01  
DRAWING NO.:

M6.00  
CONSTRUCTION

MECHANICAL LEGEND table with symbols and abbreviations for supply air diffuser, return air grille, exhaust air grille, etc.

ROOFTOP HVAC UNITS table with columns for MARK NUMBER, SYSTEM, TYPE, DISCHARGE, ECONOMIZER, etc.

System No. W-L-7018. Includes classification (UL, E814, S115), fire ratings, and a detailed cross-section diagram of the firestop assembly.

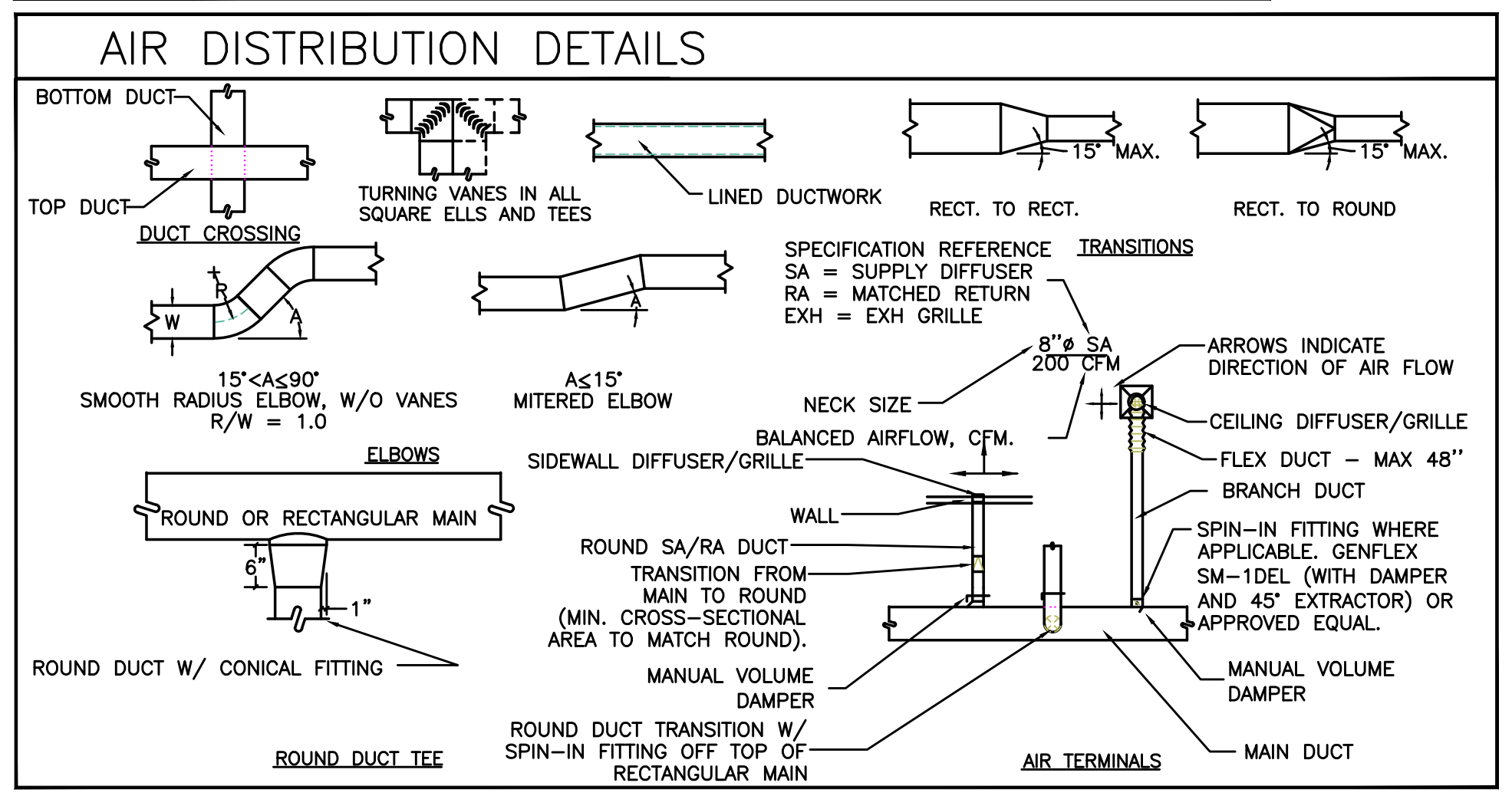
System No. W-L-7018. Includes classification (UL, E814, S115), fire ratings, and a detailed cross-section diagram of the firestop assembly.

1 FIRE PENETRATION DETAIL - 6" DUCTS

\* - UNIT TO RUN CONTINUOUSLY  
\*\*\* - ELECTRICAL DATA LISTED FOR REFERENCE ONLY. COORDINATE WITH ELECTRICAL DEIGN BUILD CONTRACTOR FOR VOLTAGE AND PHASE REQUIREMENTS

EXHAUST FANS table with columns for MARK NUMBER, TYPE, SYSTEM, CFM, RPM, TIP SPEED, MOTOR WATTS OR HP, etc.

\* - FAN TO RUN AT LOW SPEED CONTINUOUSLY, AND INCREASE TO HIGH SPEED UPON ACTIVATION OF THE MOTION SENSOR.  
\*\*\* - ELECTRICAL DATA LISTED FOR REFERENCE ONLY. COORDINATE WITH ELECTRICAL DEIGN BUILD CONTRACTOR FOR VOLTAGE AND PHASE REQUIREMENTS



System No. W-L-7198. Includes classification (UL, E814, S115), fire ratings, and a detailed cross-section diagram of the firestop assembly.

2 FIRE PENETRATION DETAIL - 4" DUCTS





EXPIRES: 31DEC21

WILLIAM KAVEN ARCHITECTURE  
4075 N. WILLIAMS AVE, STUDIO 440  
PORTLAND, OR 97227

www.williamkaven.com

**PROJECT**  
Consulting Engineers  
2007 S.E. Ash St.  
Portland, OR 97214  
PHN: (503) 234-0548  
FAX: (503) 234-0677  
INC. WWW.MFIA-ENG.COM  
CONTACT: Mark Denyer

Division EAST

2933 Southeast Division Street

DRAWING TITLE  
**MECHANICAL SCHEDULES & DETAILS**

REVISIONS

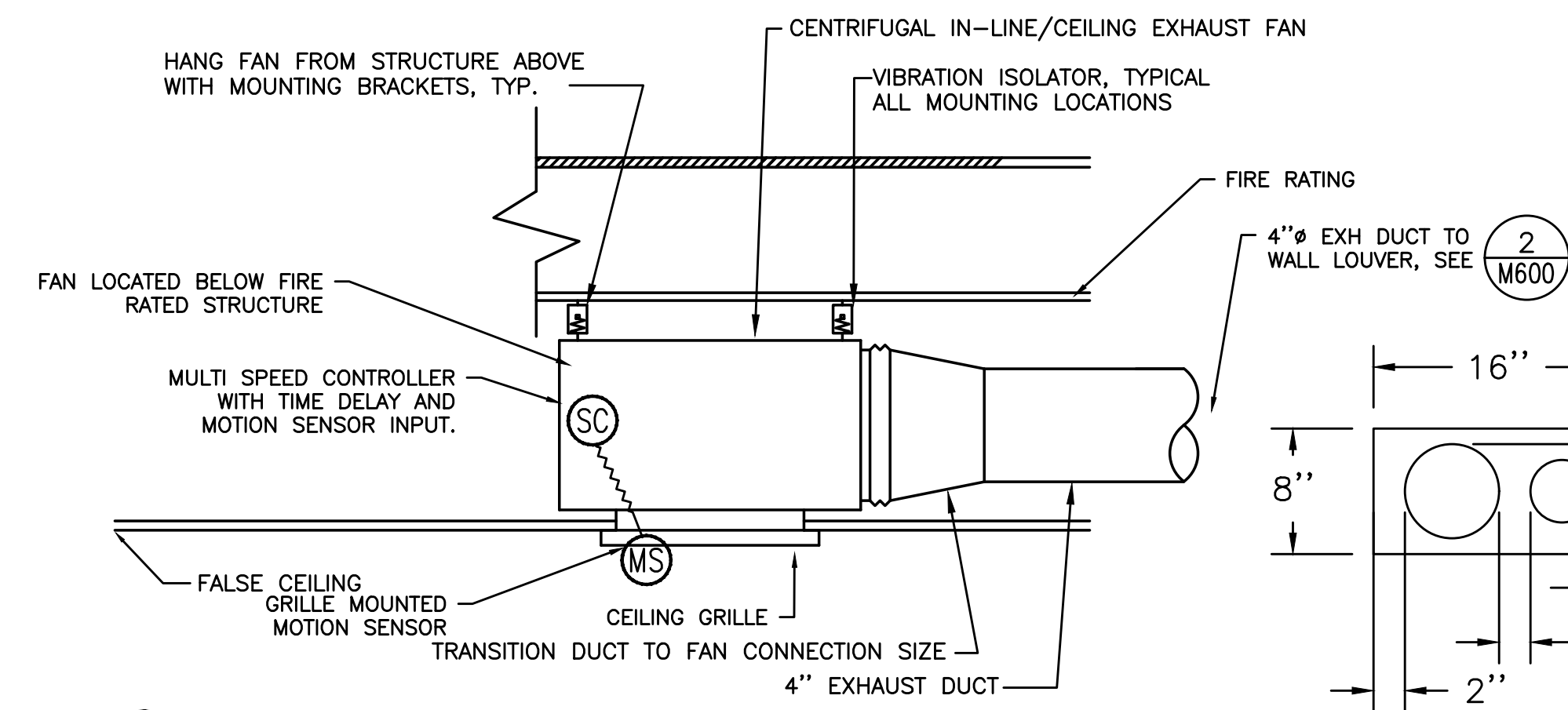
© 2020 WILLIAM KAVEN ARCHITECTURE  
This document is an instrument of service prepared by William Kaven Architecture, which owns all common law, statutory and other rights with regard to it, including copyright. This document may be used only for permitted purposes in connection with the indicated project. Other uses are prohibited without the express written consent of William Kaven Architecture.

DATE: MARCH 05, 2021  
JOB NO.: 19.01

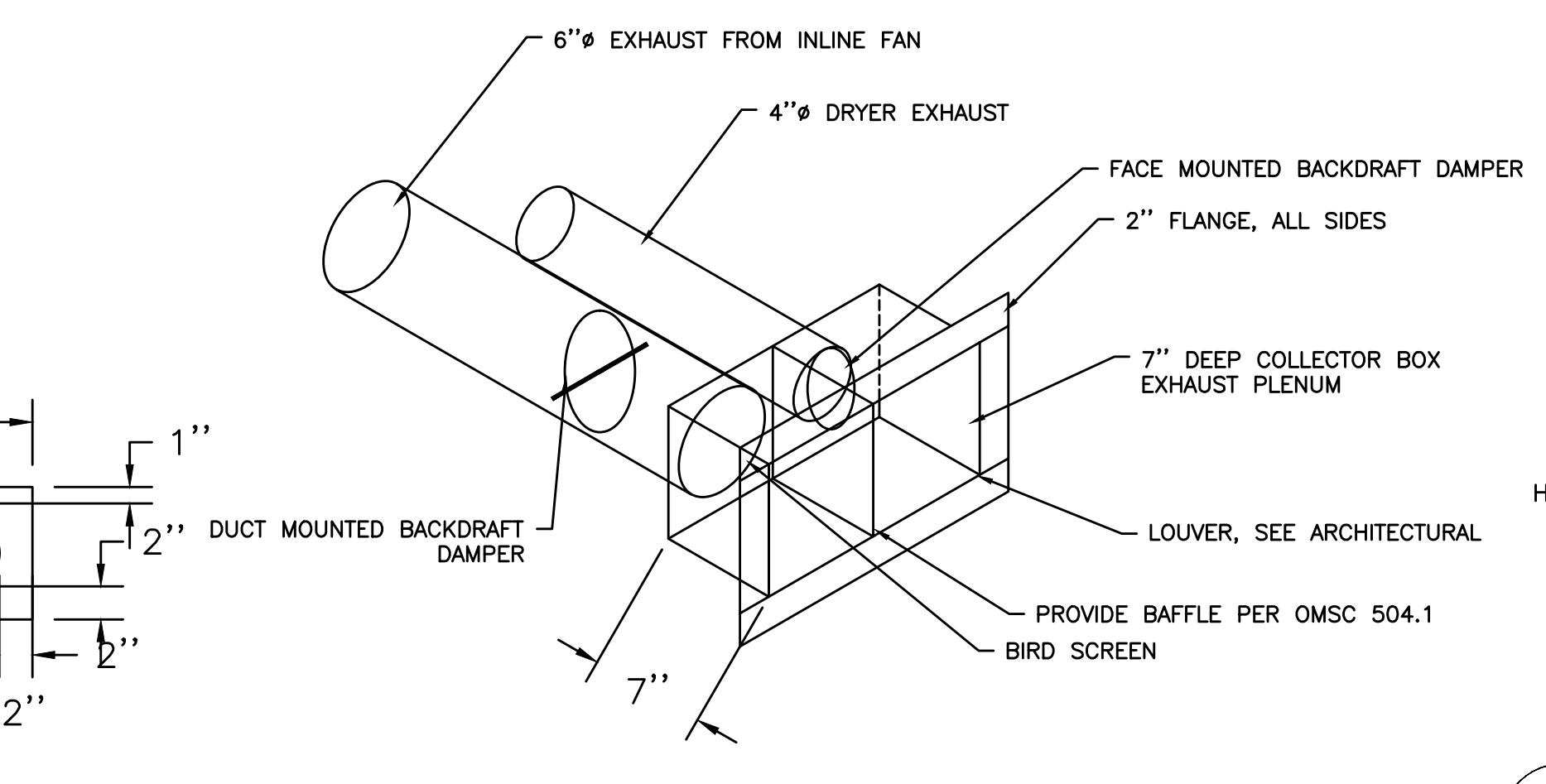
DRAWING NO.

**M6.01**

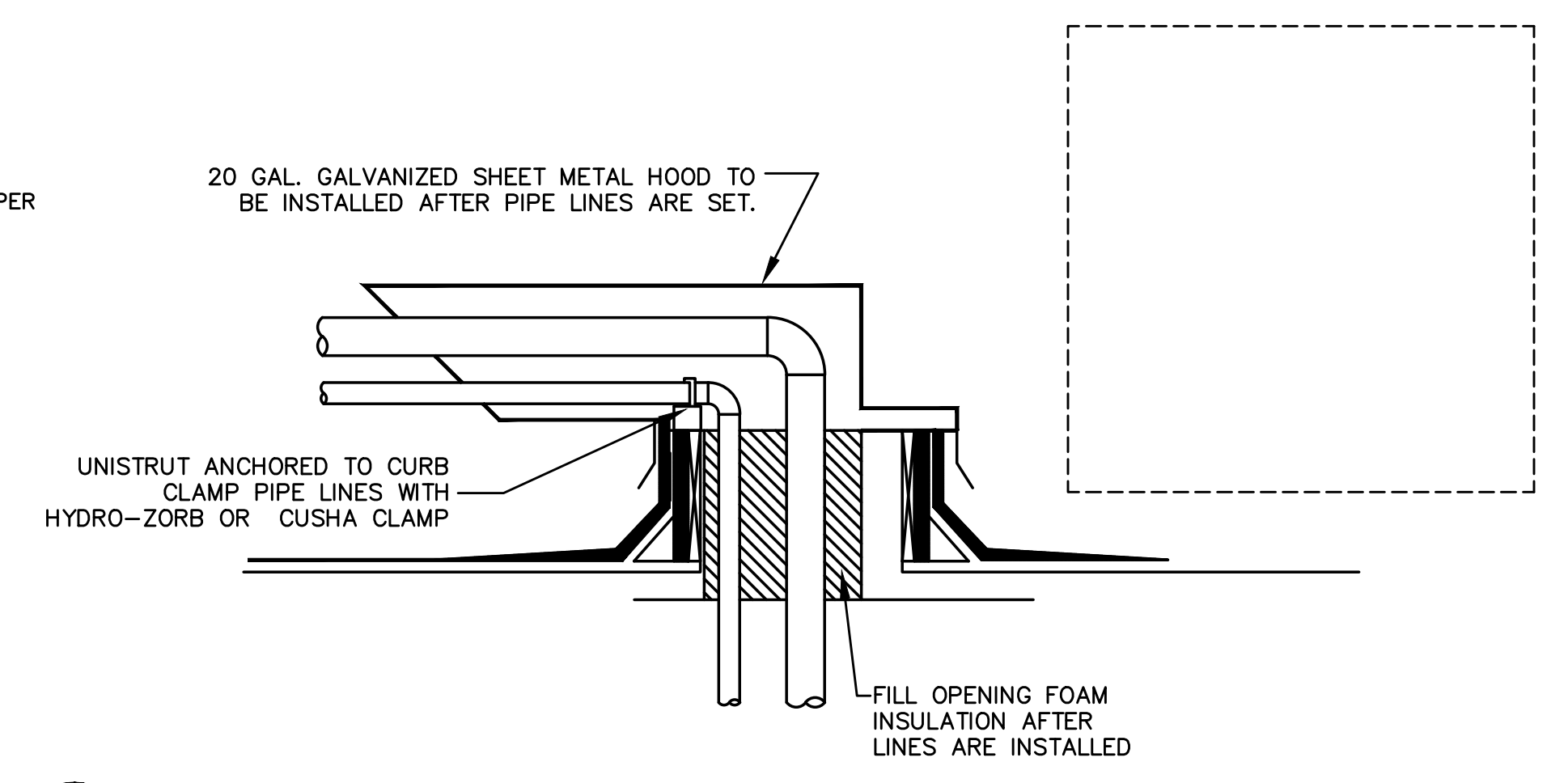
CONSTRUCTION



**1** RESTROOM EXHAUST FAN  
M601 SCALE:DETAIL

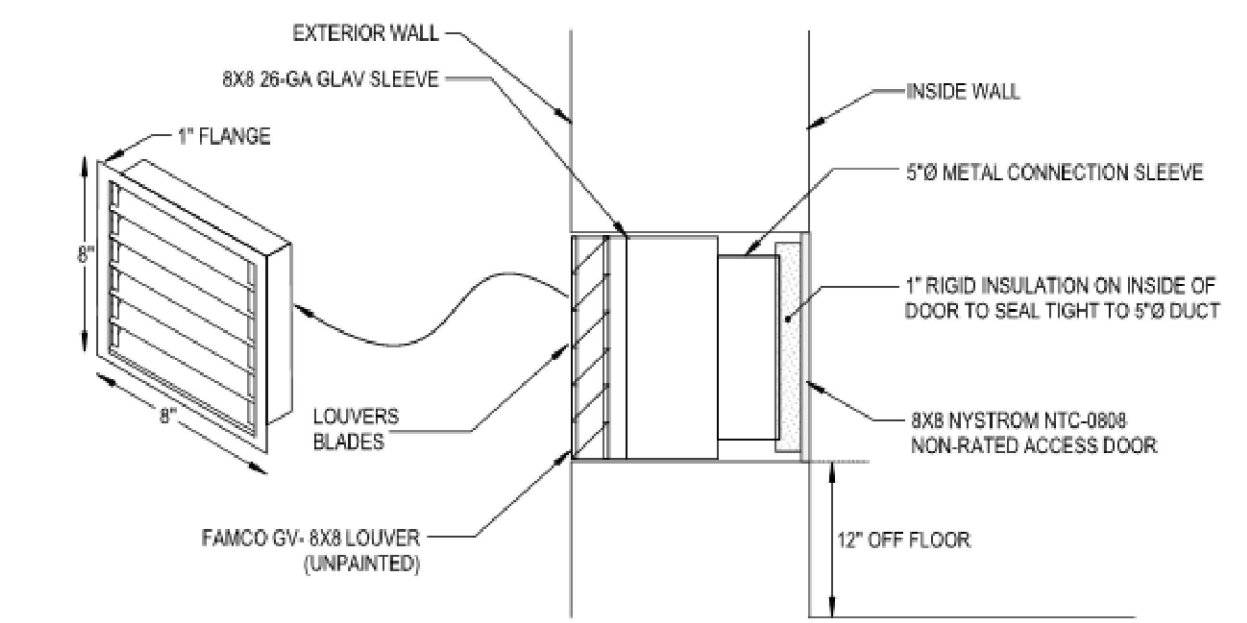
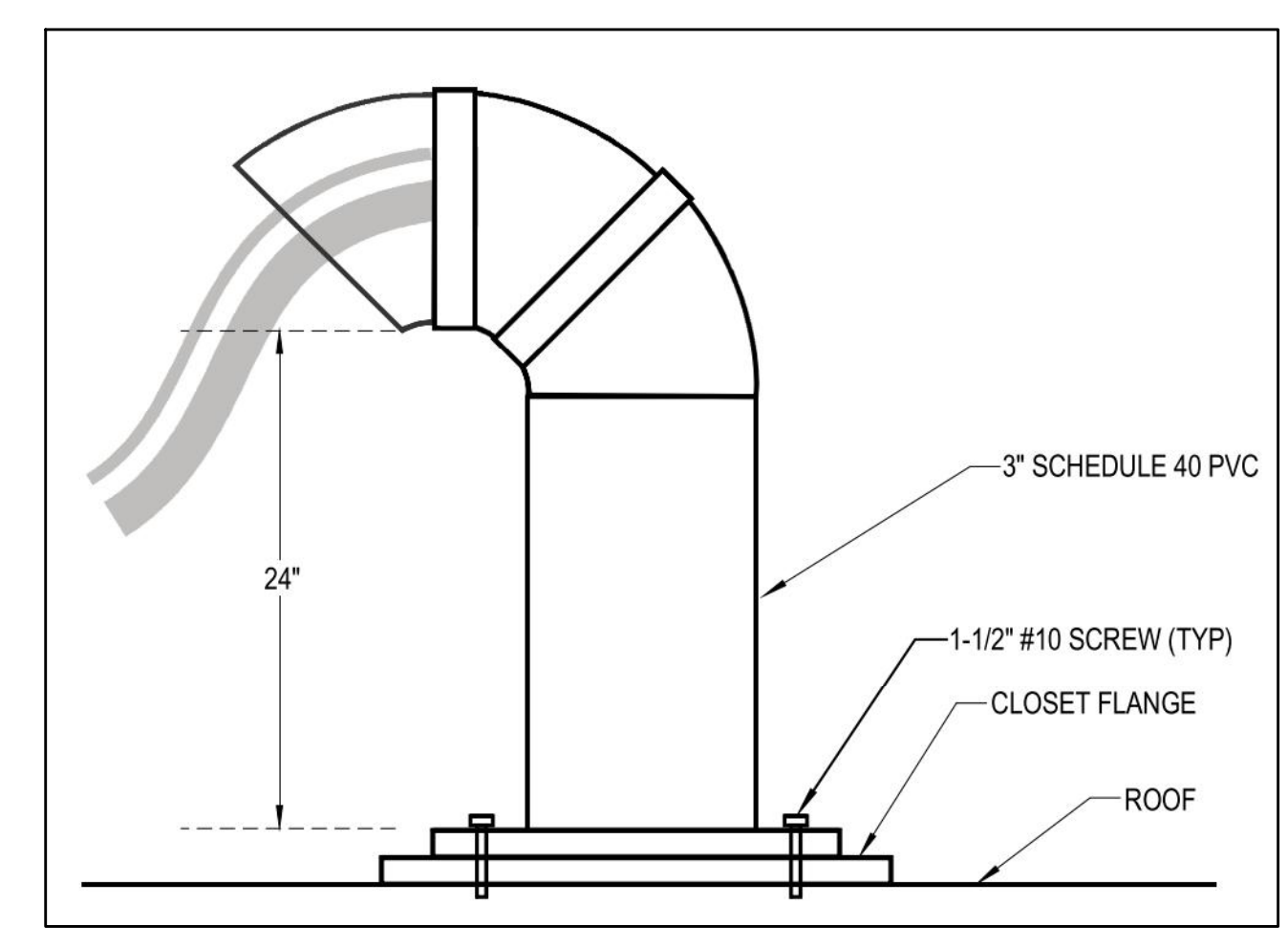


**2** SIDE WALL DWELLING UNIT VENTING  
M601 NOT TO SCALE

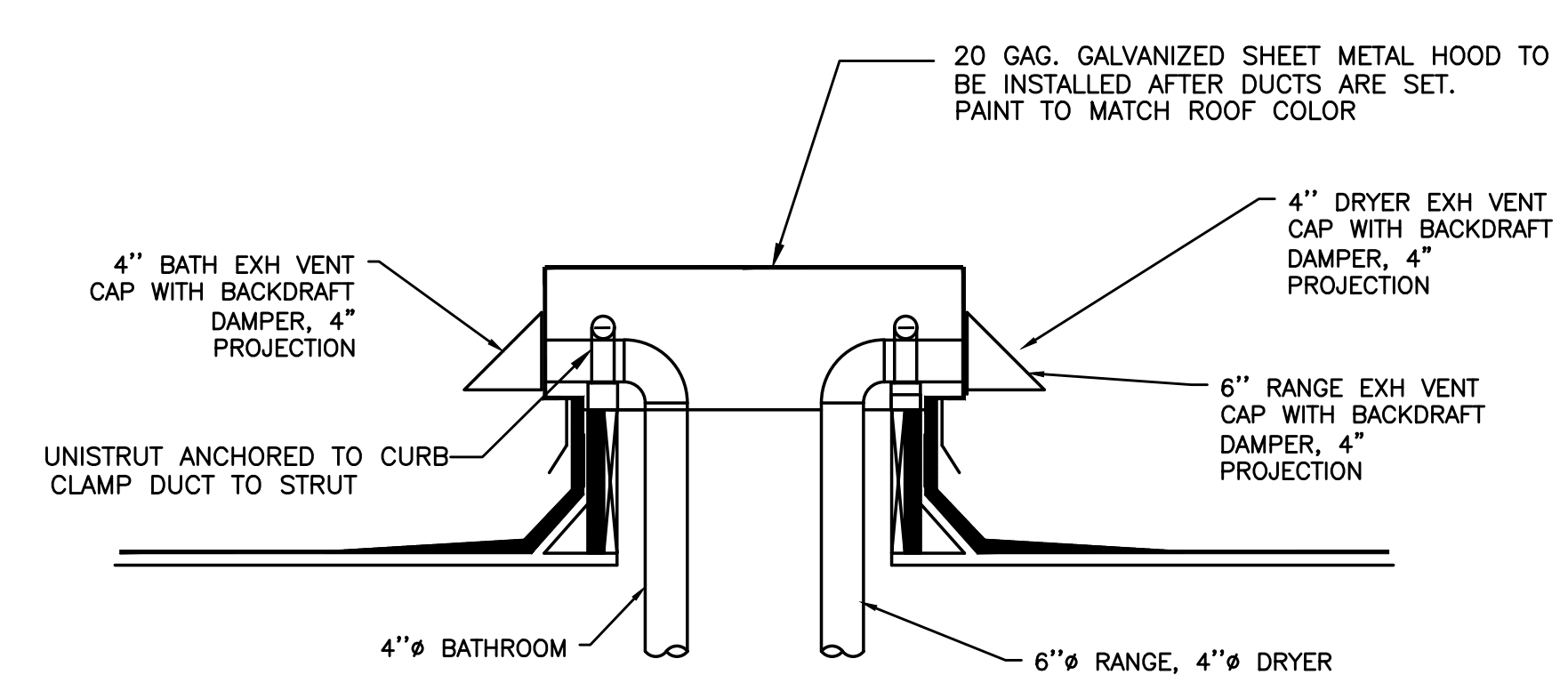


**3** REFRIGERANT ROOF PENETRATIONS  
M601 DETAIL

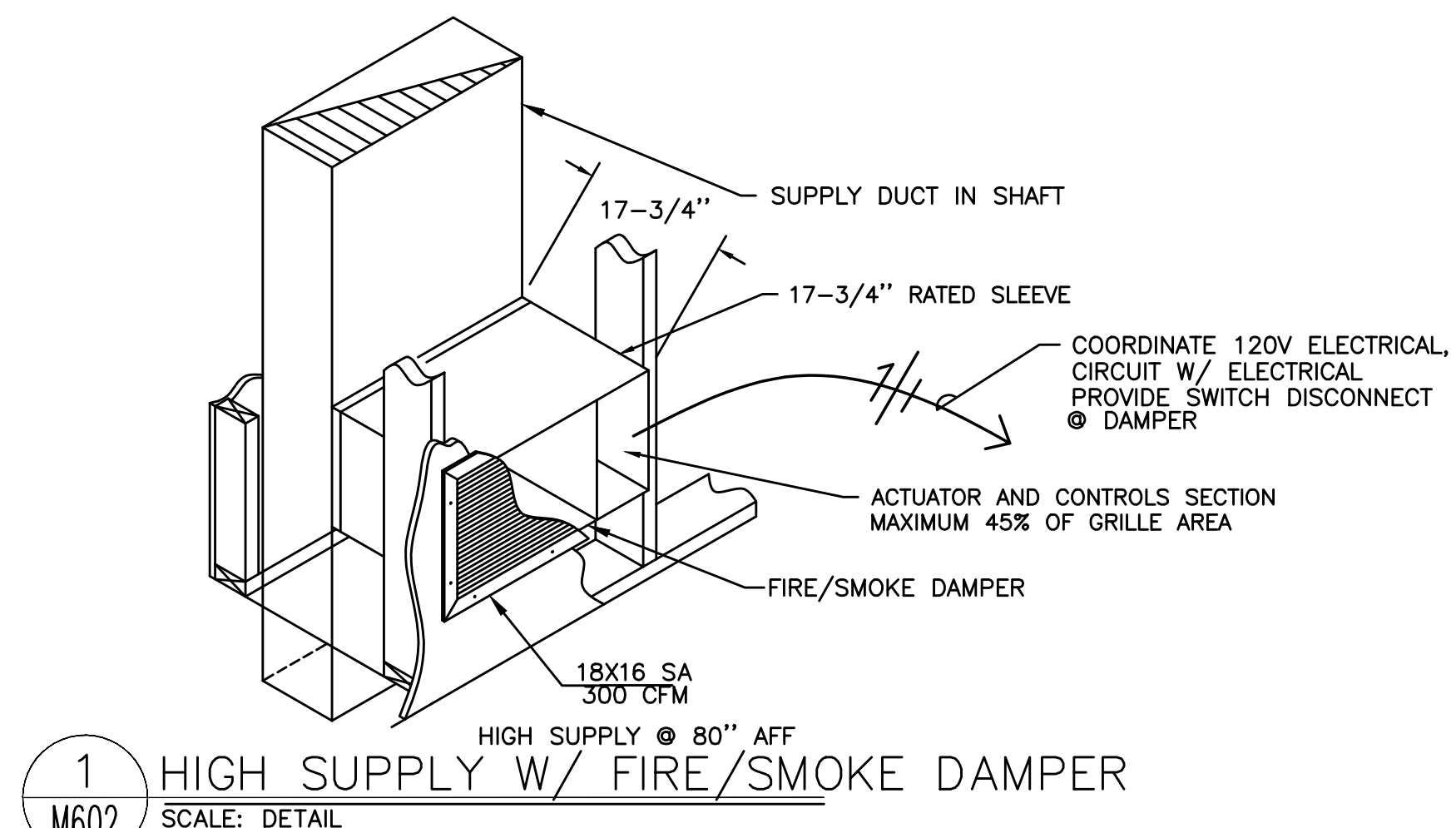
OR



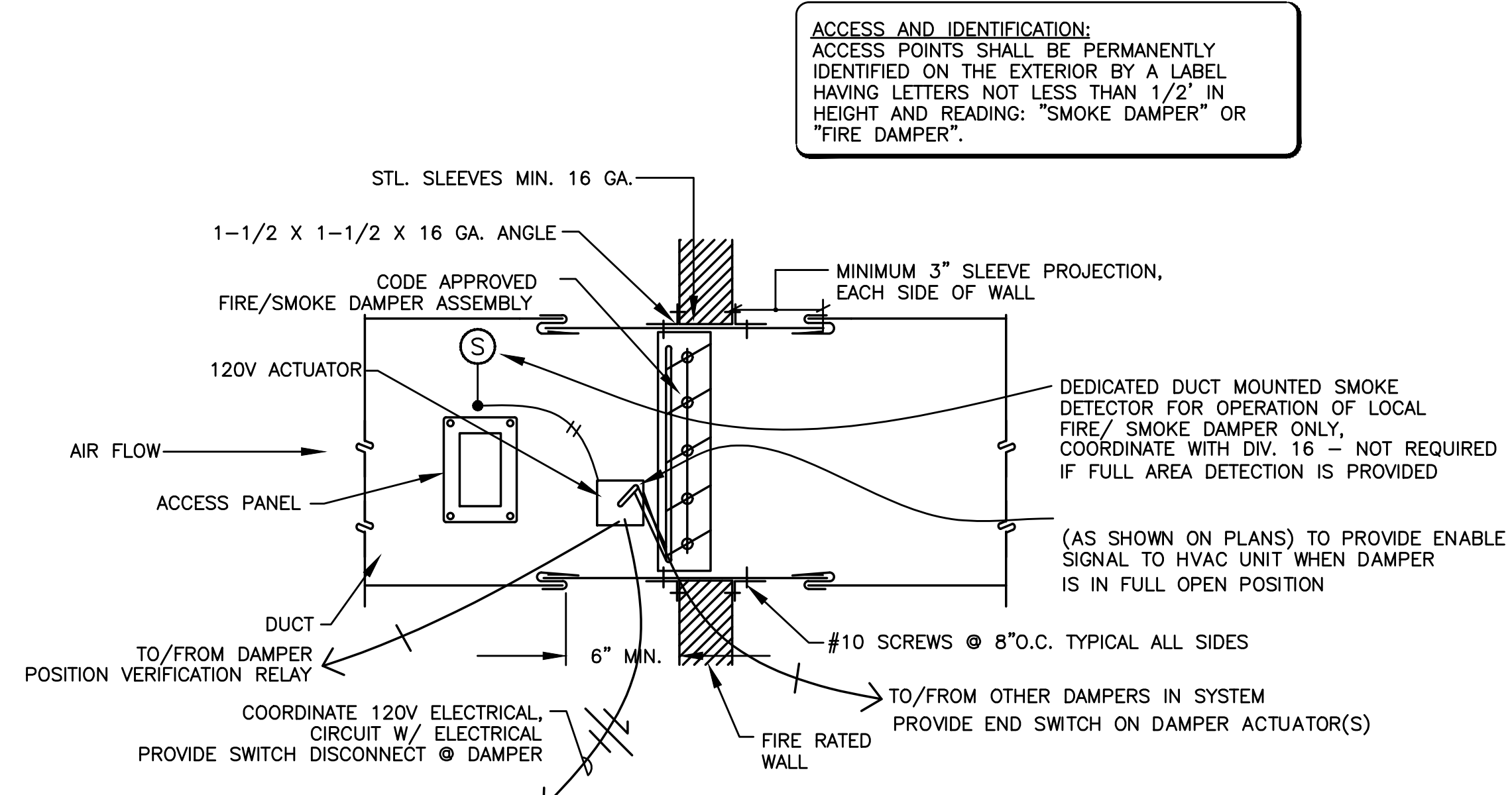
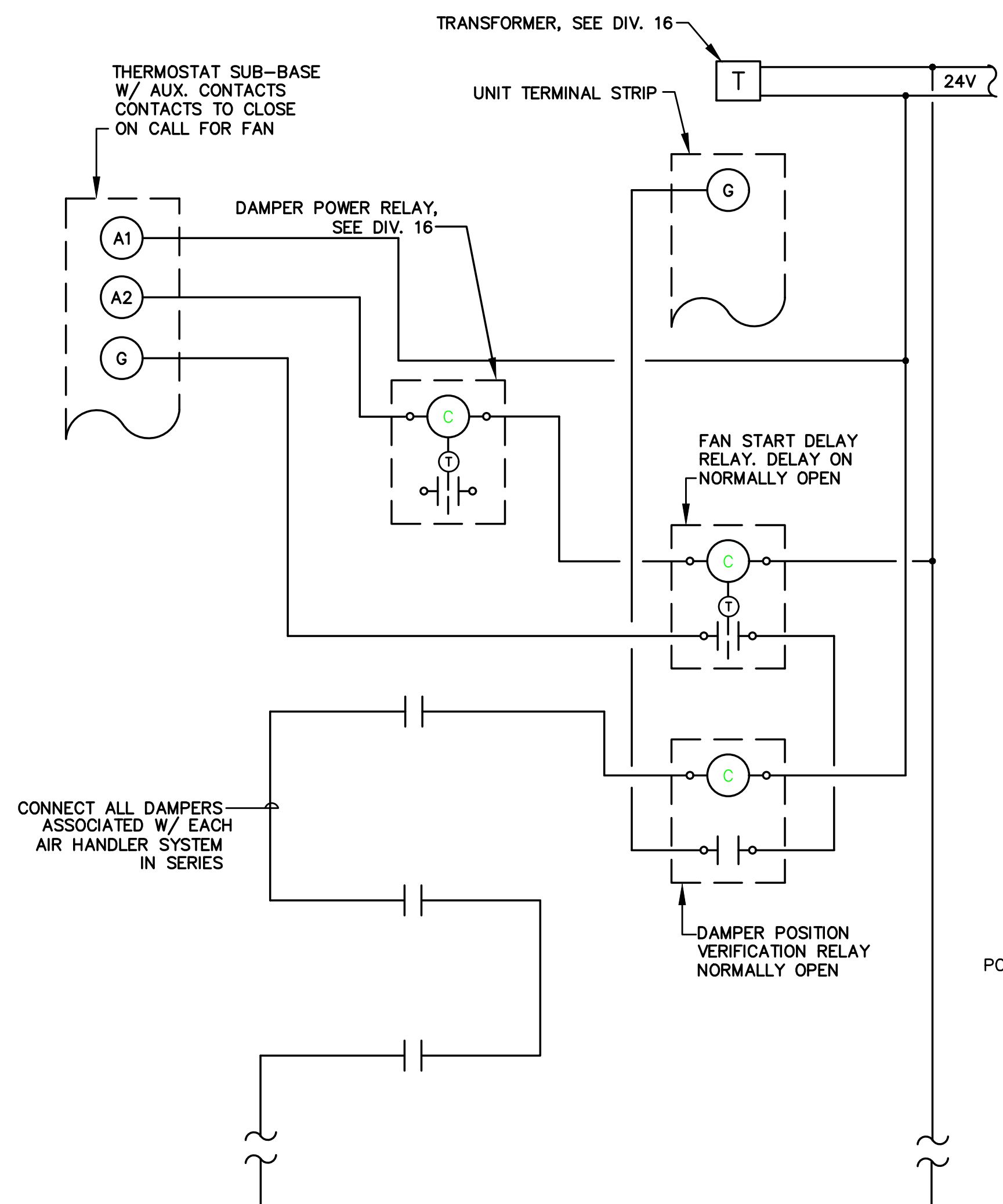
**4** AC VENT PORT WITH ACCESS DOOR  
M601 NOT TO SCALE



**5** ROOFTOP OUTLET HOOD  
M601 NOT TO SCALE



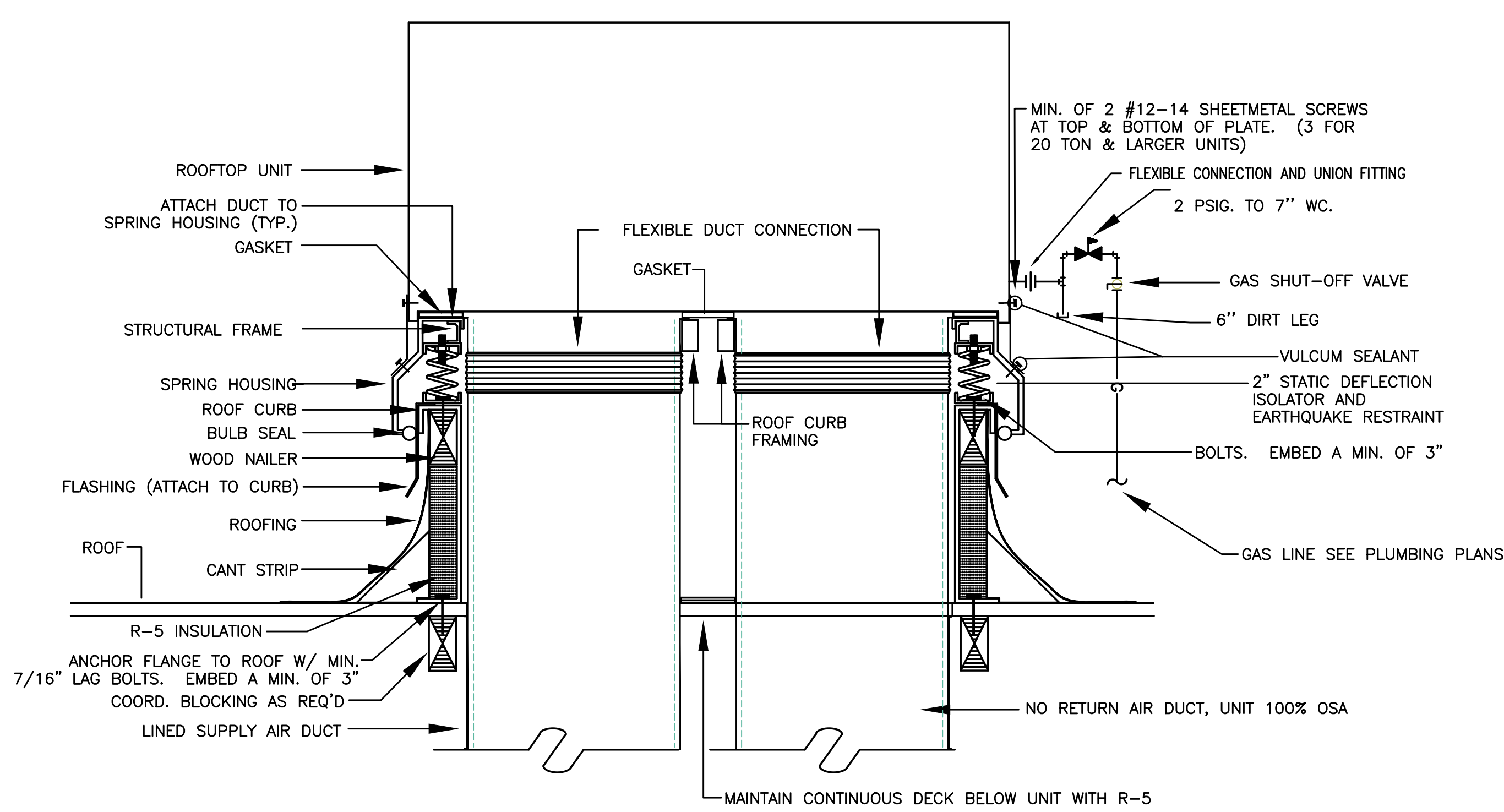
**1 HIGH SUPPLY W/ FIRE/SMOKE DAMPER**  
SCALE: DETAIL



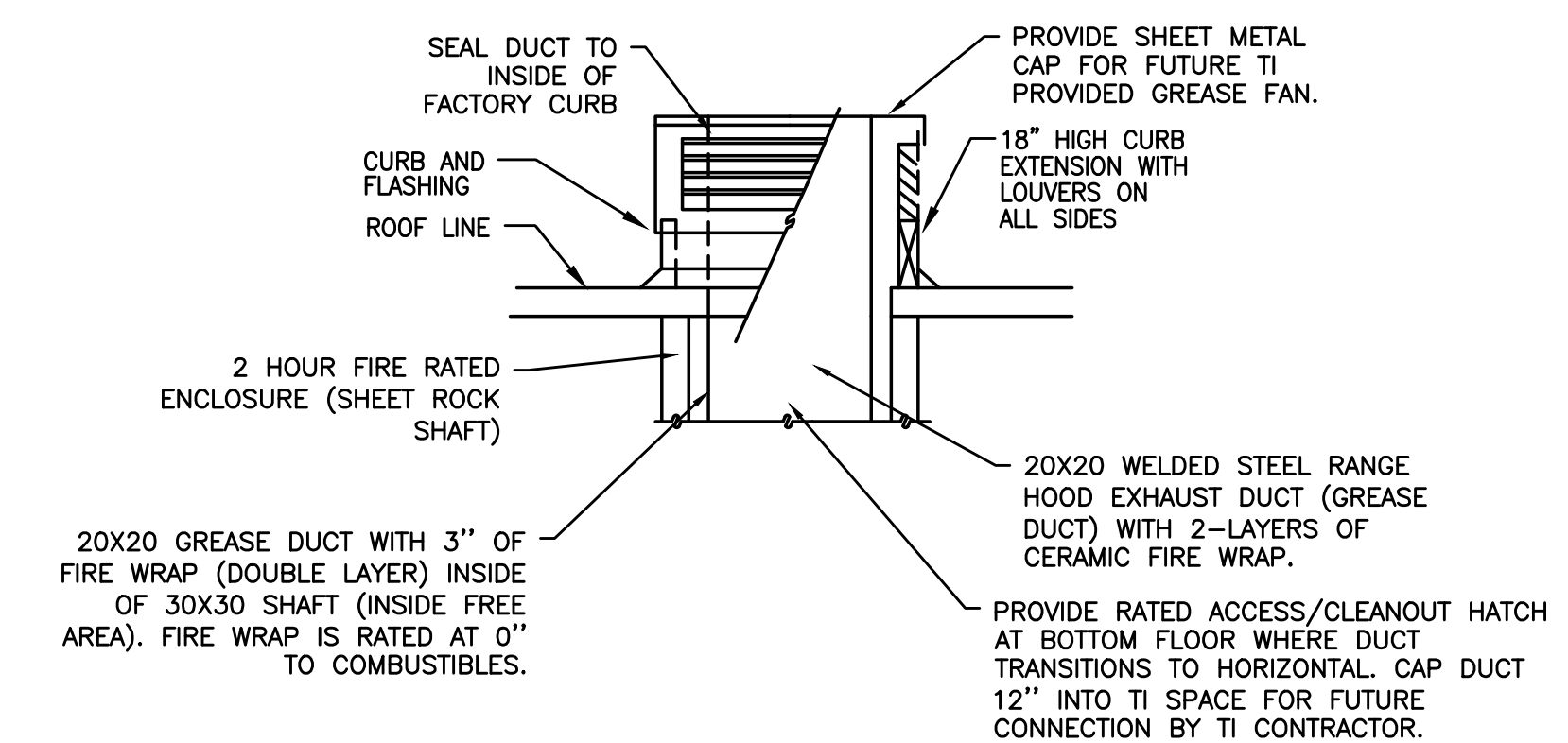
**2 FIRE/SMOKE DAMPER W/SMOKE DETECTOR**  
NOT TO SCALE

**NOTE:**  
PROVIDE ALL REQUIRED CONTROL WIRING TO ACCOMPLISH:  
**FIRE/SMOKE DAMPER** - FIRE/SMOKE DAMPER TO CLOSE UPON ACTIVATION OF LOCAL SMOKE DETECTOR  
**EXHAUST DUCTS/FANS** - FIRE/SMOKE DAMPER TO CLOSE UPON SHUTDOWN OF ASSOCIATED EXHAUST FAN.  
**SUPPLY OR RETURN DUCTS/FANS** - FIRE/SMOKE DAMPER TO CLOSE UPON SHUTDOWN OF ASSOCIATED AIR HANDLING UNIT.

**GENERAL NOTES:**  
PROVIDE ACCESS IN CEILING OR WALL FOR DAMPER AND SMOKE DETECTOR  
SEE ELECTRICAL DRAWINGS FOR WIRING INSTALLATION



**3 ROOF TOP UNIT W/ VIBRATION ISOLATION CURB**  
SCALE: DETAIL



**6 GREASE DUCT/CURB TERMINATION**  
NOT TO SCALE