



architecture, interiors & planning

419 SW 11th Ave
Portland, OR 97205
PH: 503.228.7571
FX: 503.273.8891

FULLER STATION HOUSING
90% CONSTRUCTION
DOCUMENTS

9608 SE Fuller Road
Clackamas County, Oregon, 97086

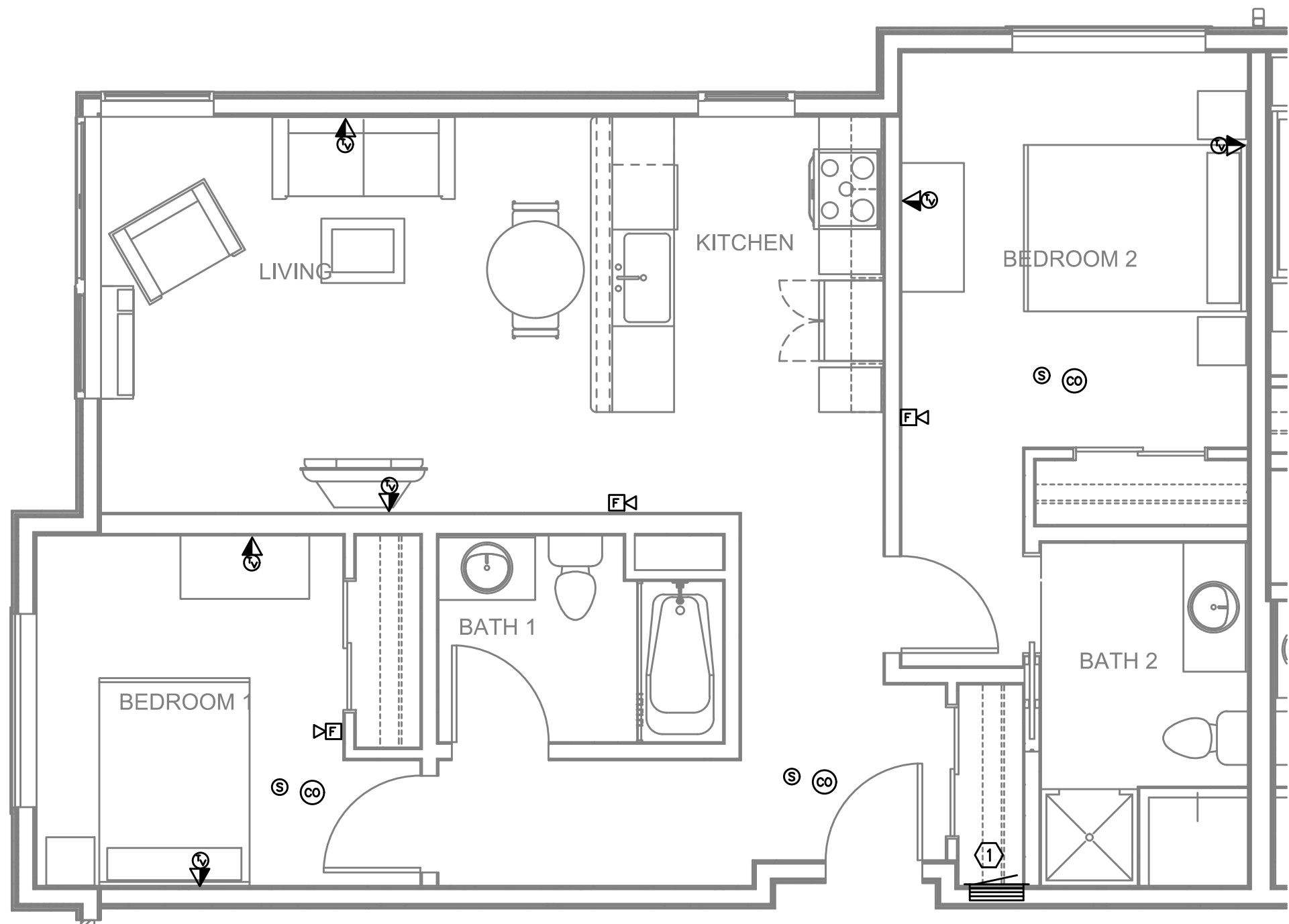
MEFA Consulting Engineers
2007 S.E. Ash St.
Portland, OR 97214
PHN: (503) 234-0548
FAX: (503) 234-0677
INC. WWW.MFIA-ENG.COM
CONTACT: GARY ADOVNIK

90%
CONSTRUCTION
DOCUMENTS

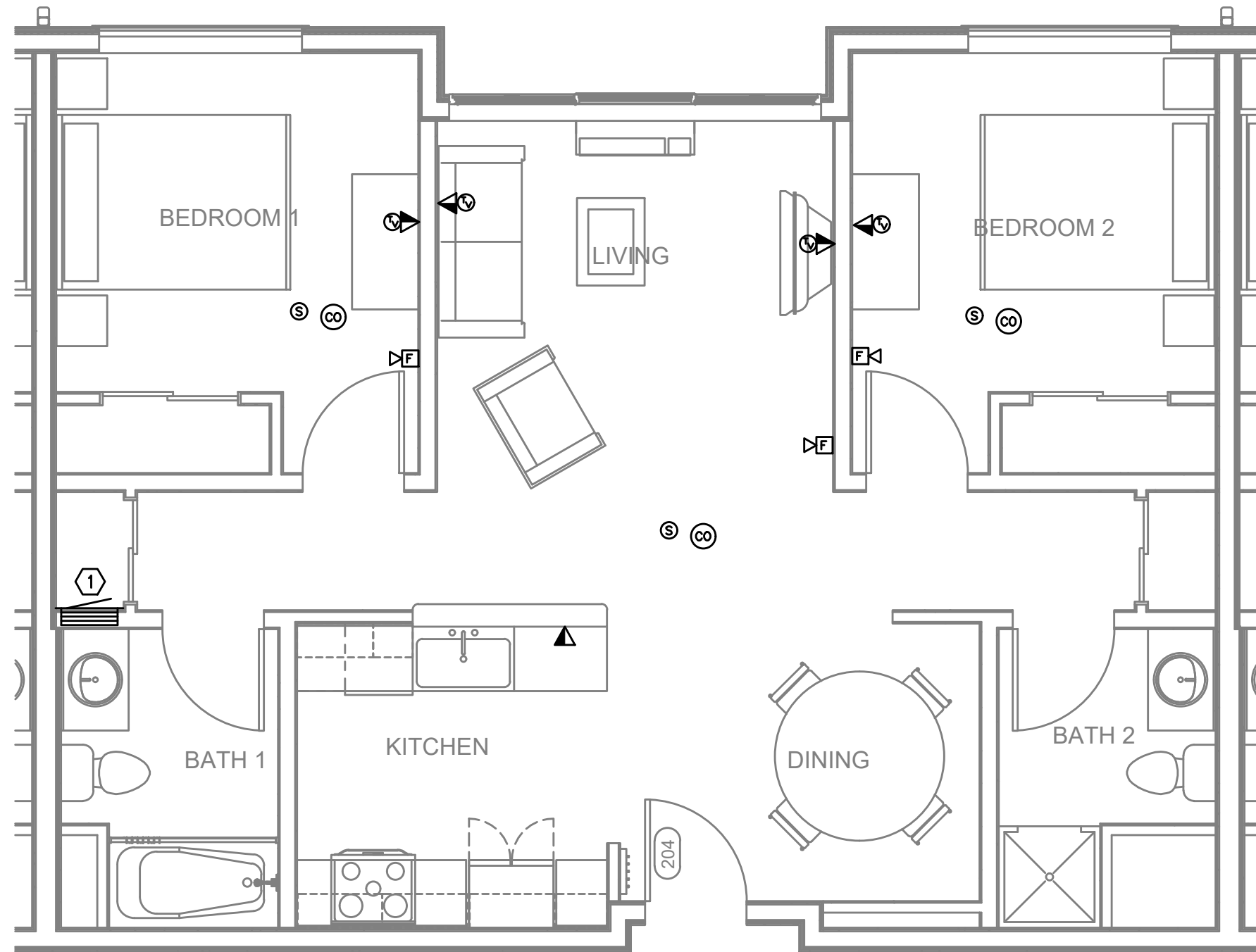
PROJECT #: 1617.00
SHEET ISSUE DATE: 11/11/2019
REVISIONS:
DESCRIPTION DATE

LEVEL 2-6 - TWO
BEDROOM UNIT
PLANS

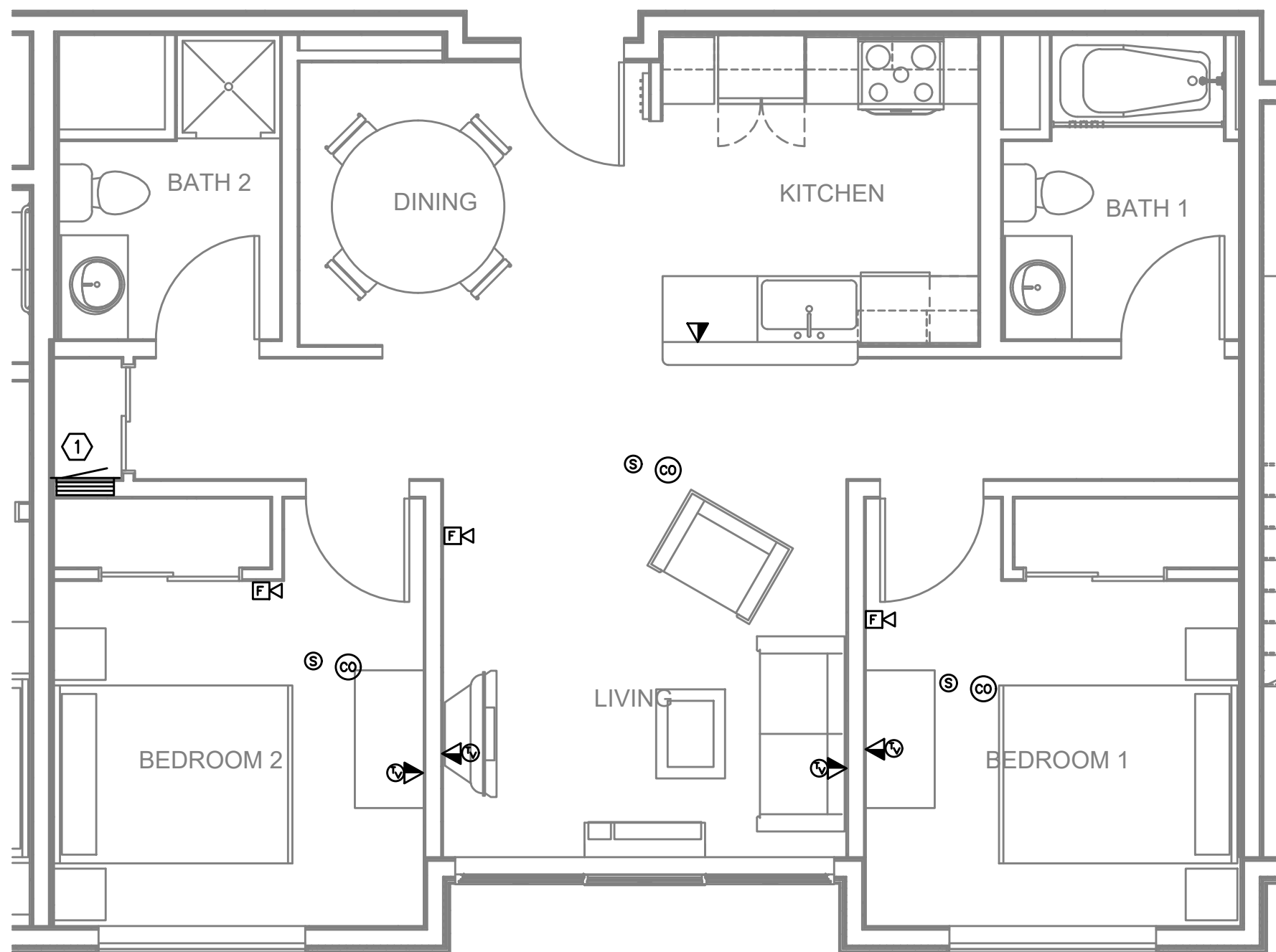
T4.14



1 LEVELS 2-6 - UNIT TYPE 2A - TELCOM PLAN
T4.14 SCALE: 1/4" = 1'-0"



2 LEVELS 2-6 - UNIT TYPE 2B - TELCOM PLAN
T4.14 SCALE: 1/4" = 1'-0"



3 LEVELS 2-6 - UNIT TYPE 2C - TELCOM PLAN
T4.14 SCALE: 1/4" = 1'-0"

GENERAL NOTES:

- DRAWINGS ARE DIAGRAMMATICAL AND MAY NOT ACCURATELY REFLECT ACTUAL CONSTRUCTION CONDITIONS. THE CONTRACTOR SHALL BE RESPONSIBLE FOR COORDINATING THE INSTALLATION OF ALL EQUIPMENT THEY ARE INSTALLING, WITH ALL TRADES PRIOR TO AND DURING CONSTRUCTION.
- FOR VOICE/DATA OUTLETS PROVIDE A SINGLE GANG MUD-RING WITH A 3/4" FLEX DUCT ROUTED TO SMART PANEL TERMINATE CONDUIT WITH END CONNECTORS AND THREAD ON PLASTIC BUSHING FOR CABLE PROTECTION. OUTLET SHALL BE AT THE SAME HEIGHT AS ADJACENT POWER OUTLET AND LESS THAN 18" SEPARATION. COORDINATE WITH ELECTRICAL.
- COORDINATE ALL DEVICE LOCATIONS WITH LATEST ARCHITECTURAL INTERIOR ELEVATIONS TO VERIFY DEVICES WILL NOT BE OBSTRUCTED.
- ALL PENETRATIONS THROUGH FIREWALLS WILL NEED FIRESTOP OF THE APPROPRIATE RATING.

KEYED NOTES:

- MEDIA DISTRIBUTION ENCLOSURE, 42"H x 14"W x 3.5"D, NON-METALLIC WIFI TRANSPARENT FOR UTILITY DEMARCATION AND RESIDENT NETWORKING.
- PROVIDE (2) CATEGORY 5E AND (1) QUAD SHIELDED RG-6 AT EACH OUTLET LOCATION, ROUTED TO SMART PANEL AND TERMINATED ON APPROPRIATE GRADE OF EQUIPMENT. LABEL OUTLETS TO MATCH PORT USED IN SMART PANEL.
- OUTLET LOCATED AT TOP OF COUNTER, JUST UNDER EDGE OF THE BREAKFAST BAR TOP, ROTATED 90°.