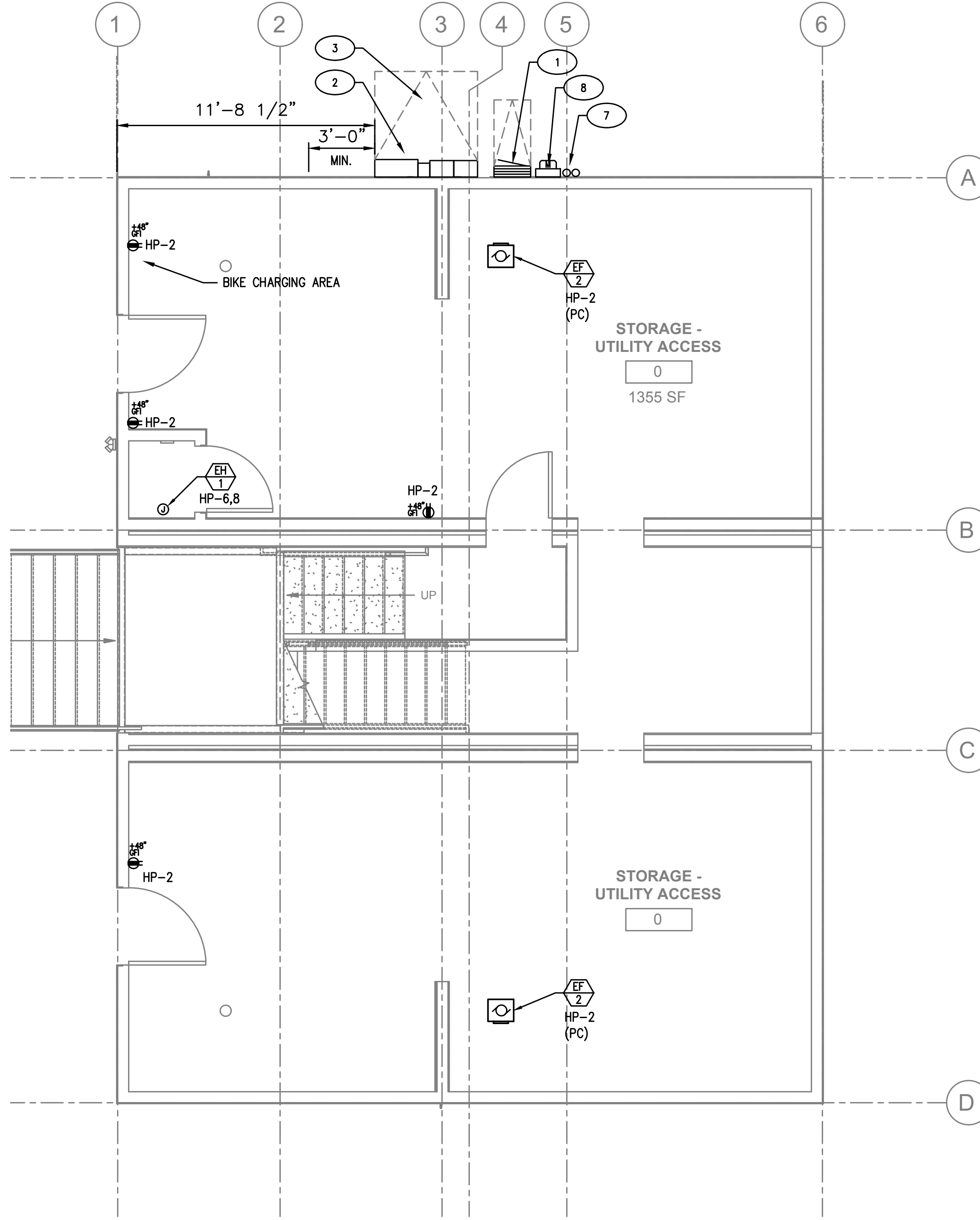


1 GRADE LEVEL LIGHTING PLAN  
E2.00 SCALE: 1/4" = 1'-0"



2 GRADE LEVEL POWER PLAN  
E2.00 SCALE: 1/4" = 1'-0"

#### GENERAL NOTES:

- ELECTRICAL DRAWINGS ARE DIAGRAMMATICAL AND MAY NOT ACCURATELY REFLECT ACTUAL CONSTRUCTION CONDITIONS. THE ELECTRICAL CONTRACTOR SHALL BE RESPONSIBLE FOR COORDINATING THE INSTALLATION OF ALL ELECTRICAL EQUIPMENT, WITH ALL TRADES PRIOR TO AND DURING CONSTRUCTION.
- WORK SHALL BE IN ACCORDANCE WITH ALL APPLICABLE LOCAL, STATE AND NATIONAL CODES.
- THE ELECTRICAL CONTRACTOR SHALL REFER TO THE ARCHITECTURAL DRAWINGS FOR ALL MOUNTING HEIGHTS AND FINISHES OF DEVICES AND FIXTURES.
- ELECTRICAL PANELS LOCATED IN PUBLIC OR UNSECURED SPACES SHALL BE PROVIDED WITH A LOCKABLE DOOR PANEL.
- SERVICE ENTRANCE AND METERING EQUIPMENT SHOWN TO APPROXIMATE SCALE. CONTRACTOR SHALL BE RESPONSIBLE FOR ENDURING THAT INSTALLED EQUIPMENT FITS THE SPACE PROVIDED AND THAT ALL REQUIRED WORKING CLEARANCES ARE PROVIDED.
- COORDINATE WITH DIVISION 23 FOR EXACT LOCATION AND POWER REQUIREMENTS OF ALL MECHANICAL EQUIPMENT PRIOR TO ROUGH IN. REFER TO SHEET E1.12 FOR MECHANICAL EQUIPMENT SCHEDULE.
- ELECTRICAL CONTRACTOR SHALL PROVIDE INSTALLATION AND FINAL CONNECTION OF THERMOSTATS AS REQUIRED. CONSULT MECHANICAL CONTRACTOR FOR EXACT REQUIREMENTS PRIOR TO ROUGH IN. VERIFY THAT THE MECHANICAL CONTRACTOR PROVIDES THE THERMOSTAT THEY SPECIFY IN THEIR PROJECT DOCUMENTS.
- FIRE ALARM & DETECTION SYSTEMS ARE TO BE DESIGNED AND INSTALLED BY OTHERS. THE ELECTRICAL CONTRACTOR SHALL COORDINATE WITH THE FIRE ALARM SYSTEM DESIGNER FOR EXACT LOCATIONS AND PROVIDE ROUGH IN ONLY.
- LOW VOLTAGE TELECOM DEVICES SHOWN ARE STRICTLY DIAGRAMMATIC AND SHOWN FOR REFERENCE ONLY. LOW VOLTAGE SYSTEMS ARE TO BE DESIGNED AND INSTALLED BY OTHERS. THE ELECTRICAL CONTRACTOR SHALL COORDINATE WITH THE SERVICE PROVIDER FOR EXACT LOCATIONS AND PROVIDE ROUGH IN ONLY.
- THE ELECTRICAL CONTRACTOR SHALL REFER TO THE MECHANICAL PLAN SHEETS AND COORDINATE WITH THE MECHANICAL INSTALLER TO AVOID CONFLICTS BETWEEN HVAC EQUIPMENT AND LIGHT FIXTURES WITHIN THE APARTMENT UNITS.
- REFER TO SHEET E1.21 FOR LIGHT FIXTURE SCHEDULE.
- ALL LIGHT SWITCHES SHALL BE ROCKER STYLE, SUCH AS LEVITON DECORA, OR APPROVED EQUAL.
- BUILDING MOUNTED EXTERIOR LIGHTS SHALL BE CIRCUITED FROM THE "HOUSE" BRANCH PANEL, VIA ROOF MOUNTED OR INTEGRAL PHOTOCELL FOR DUSK-TILL-DAWN OPERATION, UNLESS OTHERWISE NOTED.
- THE ELECTRICAL CONTRACTOR SHALL CONSULT WITH THE CIVIL ENGINEER AND UTILITY PROVIDER TO IDENTIFY ANY CONFLICTS WITH ELECTRICAL EQUIPMENT LOCATED WITHIN THE FLOOD ZONE.

#### KEYED LIGHTING NOTES:

- REFER TO E1.21 FOR TYPICAL BATHROOM SWITCHING DIAGRAM.

#### KEYED POWER NOTES:

- HOUSE ELECTRICAL PANEL. PROVIDE WITH LOCKING DOOR PANEL. PROVIDE WITH LABEL INDICATING BUILDING NUMBER, AMPERAGE RATING, AND VOLTAGE.
- ELECTRICAL SERVICE ENTRANCE EQUIPMENT AND UTILITY METERS. REFER TO TYPICAL ONE-LINE DIAGRAM ON SHEET E1.11 FOR ADDITIONAL INFORMATION. SERVICE ENTRANCE EQUIPMENT TO BE INSTALLED PER THE UTILITY PROVIDER'S ELECTRICAL SERVICE REQUIREMENTS (ESR), WITH REGARDS TO MINIMUM & MAXIMUM MOUNTING HEIGHTS, AND WORKING CLEARANCES.
- CODE REQUIRED MINIMUM FLAT, LEVEL WORKING CLEARANCE OF 48" SHALL BE MAINTAINED. PGE REQUIRES METERING EQUIPMENT WITHIN 10'-0" OF THE FACE OF THE BUILDING AND 3'-0" CLEAR OF DOORS.
- BATHROOM EXHAUST FAN CONTROLLED VIA LIGHT SWITCHES. REFER TO TYPICAL BATHROOM SWITCHING DIAGRAMS ON SHEET E1.21.
- PROVIDE ONE 15A, 120V DUPLEX RECEPTACLE, MOUNTED UNDER KITCHEN SINK FOR GARBAGE DISPOSAL. CIRCUIT AS INDICATED.
- FOR RANGE HOODS/MICROWAVES PROVIDED WITH A CORD & PLUG SET, PROVIDE A 20A DUPLEX RECEPTACLE LOCATED INSIDE THE OVERHEAD CABINET. HARDWIRED APPLIANCES MAY BE CIRCUITED VIA J-BOX MOUNTED FLUSH OR RECESSED INTO THE WALL DIRECTLY BEHIND THE APPLIANCE.
- FUTURE PV SOLAR SYSTEM BY OTHERS. PROVIDE TWO 2" CONDUITS W/ PULL STRINGS, ROUTED TO THE ROOF AND CAP BOTH ENDS. CONDUITS SHALL BE ROUTED SUCH THAT THERE ARE NO ROOF PENETRATIONS.
- PV METER FOR FUTURE SOLAR SYSTEM BY OTHERS.
- PV DISCONNECT FOR FUTURE SOLAR SYSTEM BY OTHERS, LOCATED ON ROOF. CONSULT PV SYSTEM INSTALLER FOR EXACT SIZE AND LOCATION PRIOR TO ROUGH IN.
- PROVIDE WIRE CONNECTION FOR THERMOSTAT(S). COORDINATE WITH MECHANICAL INSTALLER FOR EXACT LOCATION AND POWER REQUIREMENTS PRIOR TO ROUGH IN.
- COORDINATE WITH THE MECHANICAL EQUIPMENT INSTALLER FOR THE LOCATION AND TYPE OF POWER CONNECTION FOR THE MINI-SPLIT UNITS PRIOR TO ROUGH IN.



Date:	W/D/Y	Proj. No:	###	Drawn By:	DNT	Chkd By:	RLC	DSGN By:	DNT	Acad File:	10115
-------	-------	-----------	-----	-----------	-----	----------	-----	----------	-----	------------	-------

VANDERSLICE 4-PLEX  
7604 SE 87th AVE.  
PORTLAND, OR  
GRADE LEVEL ELECTRICAL PLANS



Consulting Engineers  
2007 S.E. Ash St.  
Portland, OR 97214  
PHONE: (503) 234-0540  
FAX: (503) 234-0577  
WWW.MEI-ENG.COM

SHEET  
E2.00