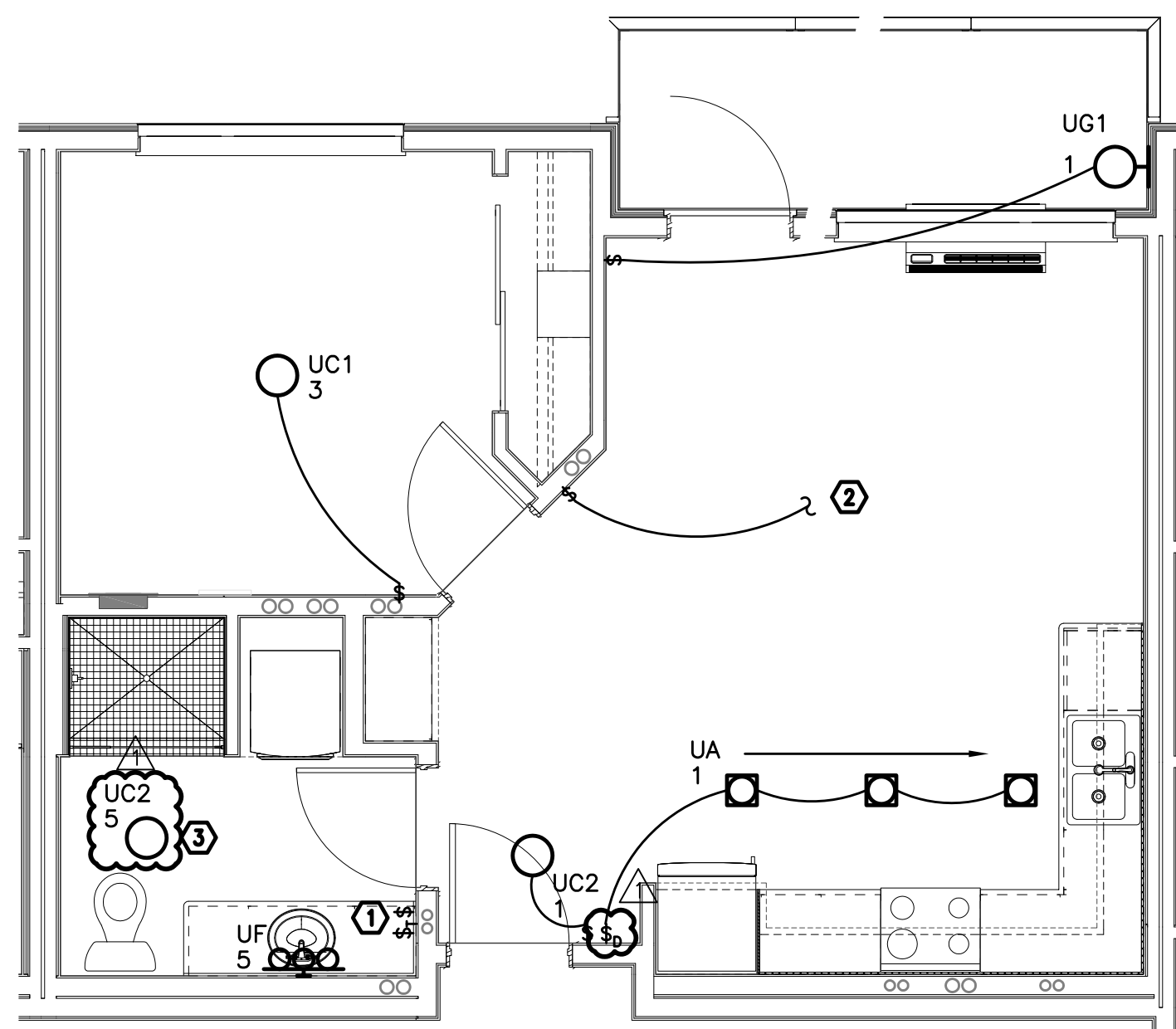
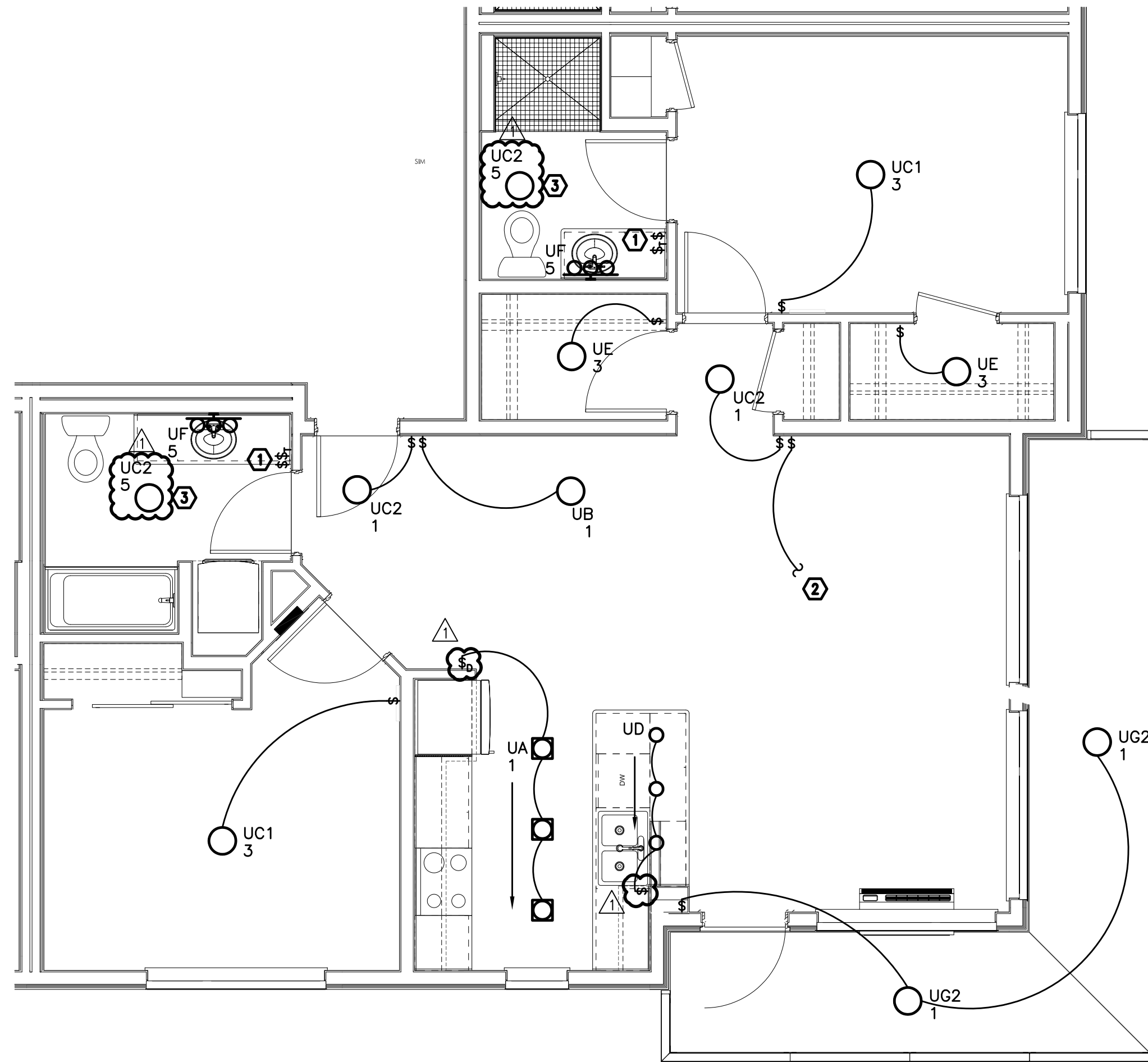


LIGHTING PLAN
TYPICAL UNIT TYPE L
1
E404 SCALE: 1/4" = 1'-0"



LIGHTING PLAN
TYPICAL UNIT TYPE N
3
E404 SCALE: 1/4" = 1'-0"



LIGHTING PLAN
TYPICAL UNIT TYPE M
2
E404 SCALE: 1/4" = 1'-0"

- GENERAL NOTES (APARTMENT UNITS):
- ALL PLANS ARE DIAGRAMMATICAL. CONSULT ARCHITECTURAL PLANS FOR EXACT LOCATION OF ALL DEVICES AND FIXTURES.
 - REFER TO SHEET E1.14 FOR TYPICAL UNIT LOAD CENTER DIRECTORIES.
 - ALL LIGHT SWITCHES SHALL BE ROCKER STYLE, SUCH AS LEVITON DECORA, OR APPROVED EQUAL.

- KEYED NOTES (APARTMENT UNITS):
- REFER TO TYPICAL BATHROOM SWITCHING DETAILS ON SHEET E1.22.
 - SWITCHED RECEPTACLE. REFER TO SHEETS E4.11 THRU E4.13 FOR RECEPTACLE LOCATION.
 - PROVIDE CEILING MOUNTED LIGHT FIXTURE AS INDICATED IN BATHROOMS. FOR BATHROOMS ON EXTERIOR WALLS, PROVIDE FIXTURE TYPE "UH" IN LIEU OF TYPE "UC2".