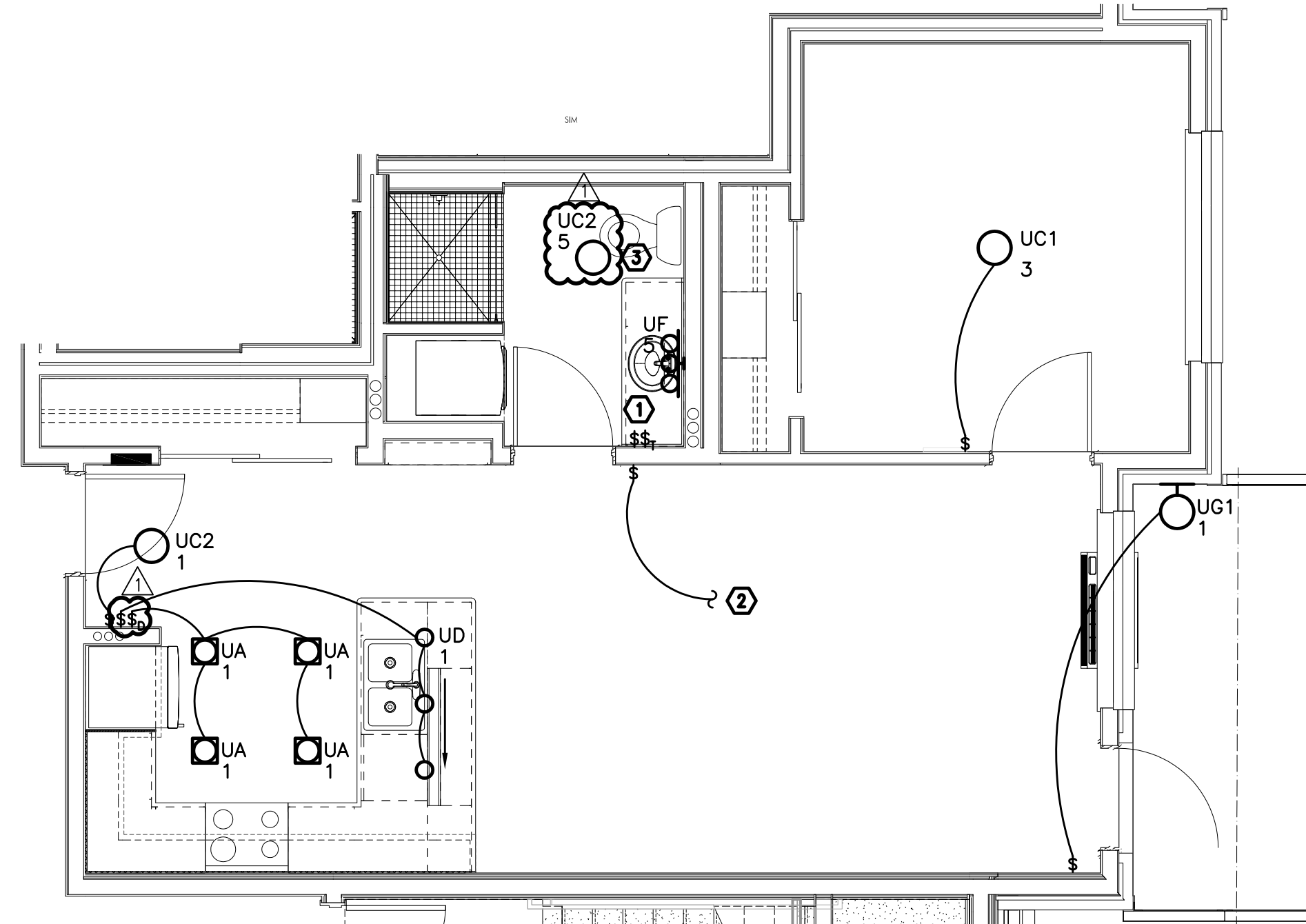
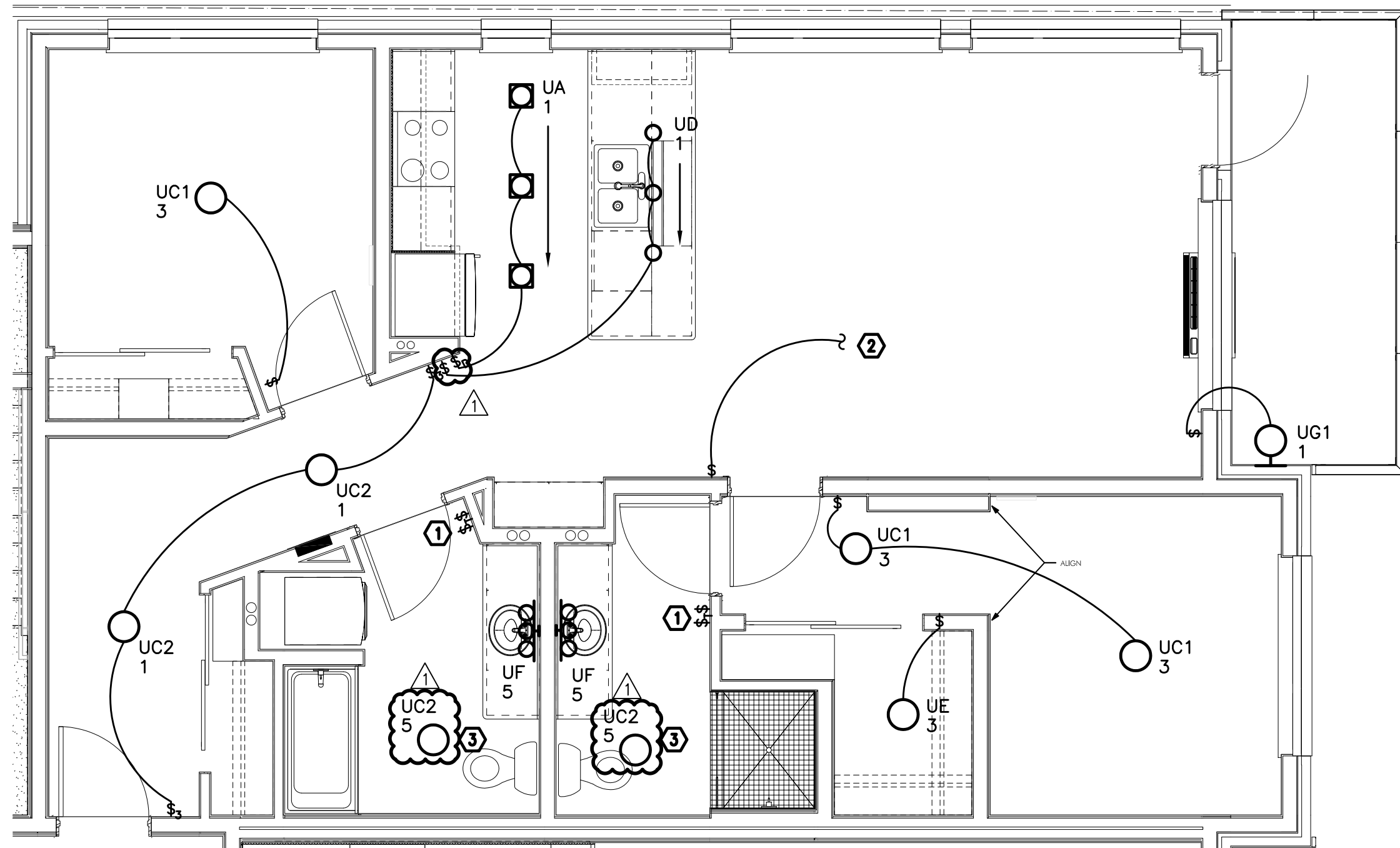


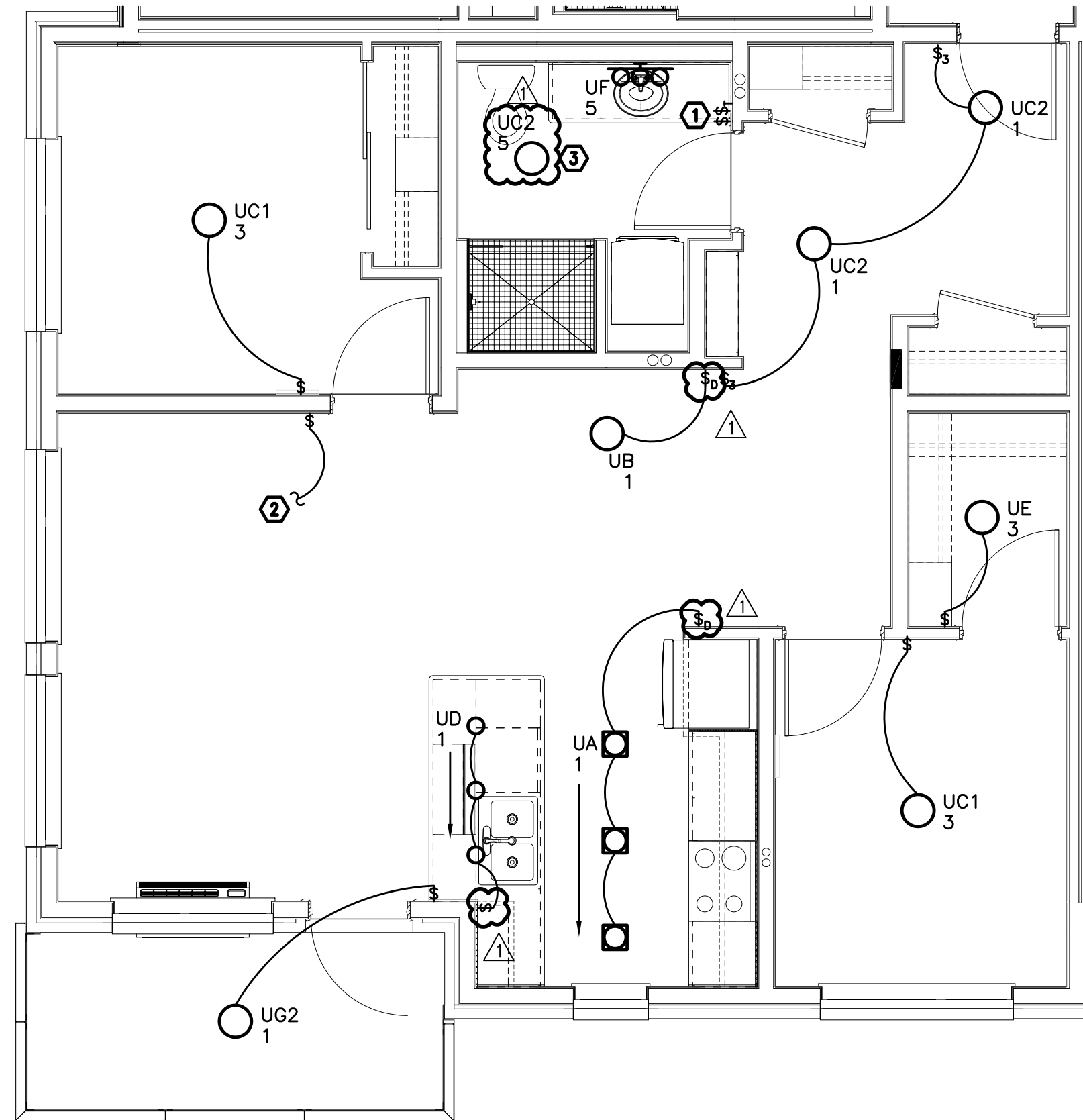
1
E402 LIGHTING PLAN
TYPICAL UNIT TYPE E
SCALE: 1/4" = 1'-0"



2
E402 LIGHTING PLAN
TYPICAL UNIT TYPE F
SCALE: 1/4" = 1'-0"



3
E402 LIGHTING PLAN
TYPICAL UNIT TYPE G
SCALE: 1/4" = 1'-0"



4
E402 LIGHTING PLAN
TYPICAL UNIT TYPE H
SCALE: 1/4" = 1'-0"

GENERAL NOTES (APARTMENT UNITS):

- ALL PLANS ARE DIAGRAMMATICAL. CONSULT ARCHITECTURAL PLANS FOR EXACT LOCATION OF ALL DEVICES AND FIXTURES.
- REFER TO SHEET E1.14 FOR TYPICAL UNIT LOAD CENTER DIRECTORIES.
- ALL LIGHT SWITCHES SHALL BE ROCKER STYLE, SUCH AS LEVITON DECORA, OR APPROVED EQUAL.

KEYED NOTES (APARTMENT UNITS):

- REFER TO TYPICAL BATHROOM SWITCHING DETAILS ON SHEET E1.22.
- SWITCHED RECEPTACLE. REFER TO SHEETS E4.11 THRU E4.13 FOR RECEPTACLE LOCATION.
- PROVIDE CEILING MOUNTED LIGHT FIXTURE AS INDICATED IN BATHROOMS. FOR BATHROOMS ON EXTERIOR WALLS, PROVIDE FIXTURE TYPE "UH" IN LIEU OF TYPE "UC2".