

IN THE EVENT CONFLICTS ARE DISCOVERED  
BETWEEN THE ORIGINAL SIGNED AND SEALED  
DOCUMENTS PREPARED BY THE ARCHITECTS  
AND/OR THEIR CONSULTANTS, AND ANY COPY OF  
THE DOCUMENTS TRANSMITTED BY MAIL, FAX,  
ELECTRONICALLY OR OTHERWISE, THE ORIGINAL  
SIGNED AND SEALED DOCUMENTS SHALL GOVERN.

PROJECT # 2014-75  
DATE: 10-08-2015

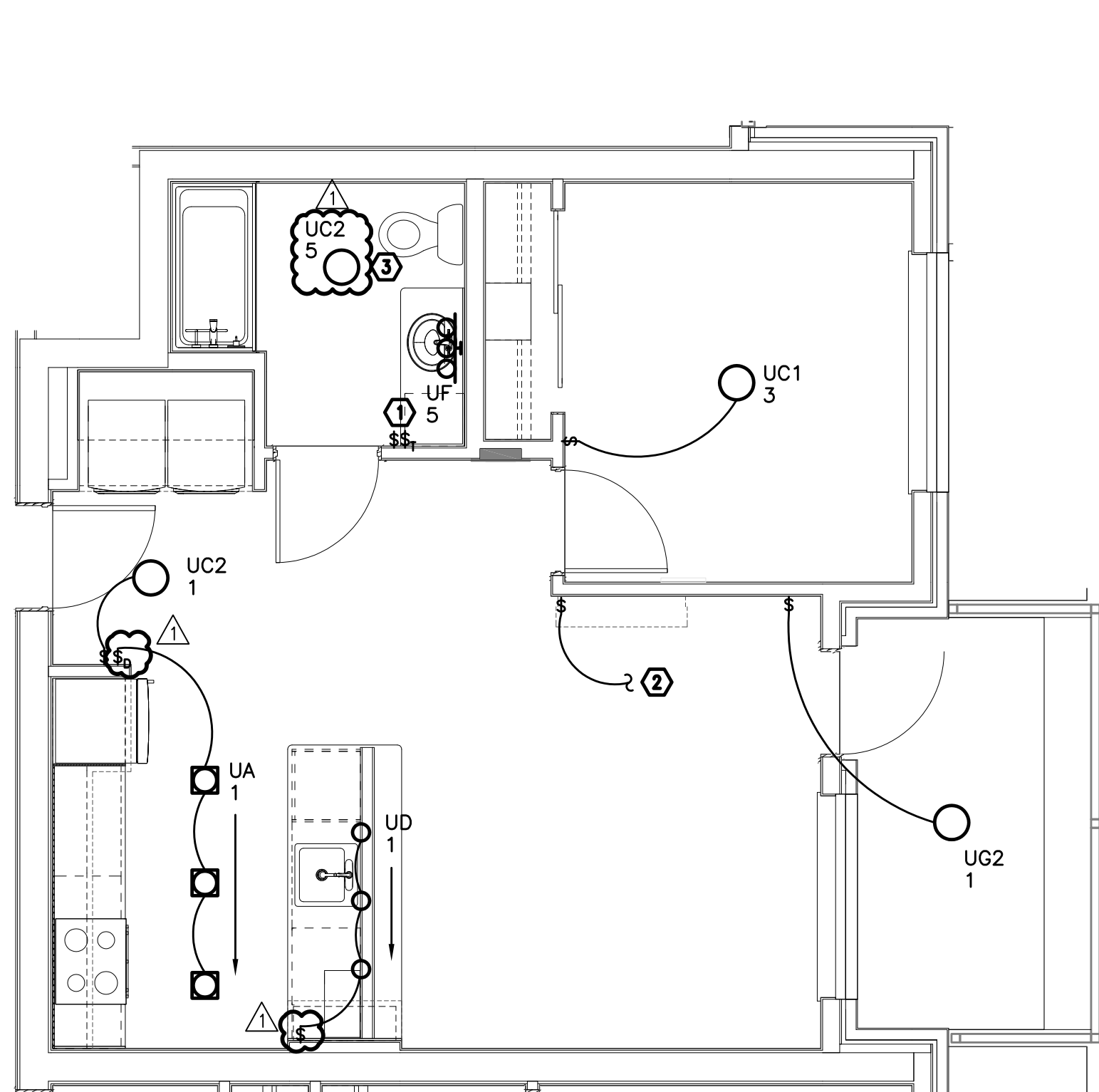
REVISIONS  
△ 02.05.16 PLAN REVIEW

**VANCOUVER AVE PHASE II  
MIXED USE BUILDING**  
NEC N VANCOUVER AVE & N SHAVER ST, PORTLAND, OR 97227

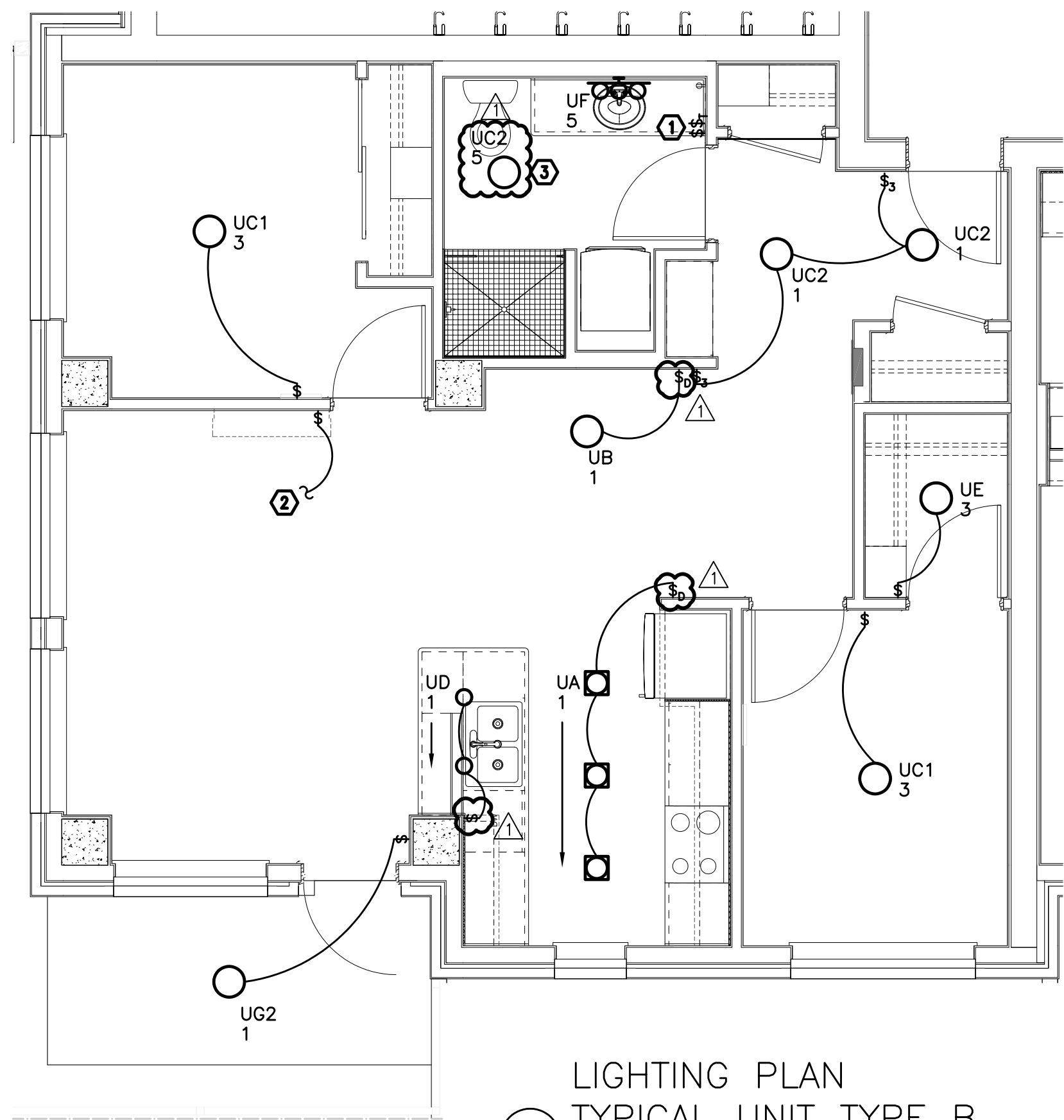
SHEET:

**E4.01**

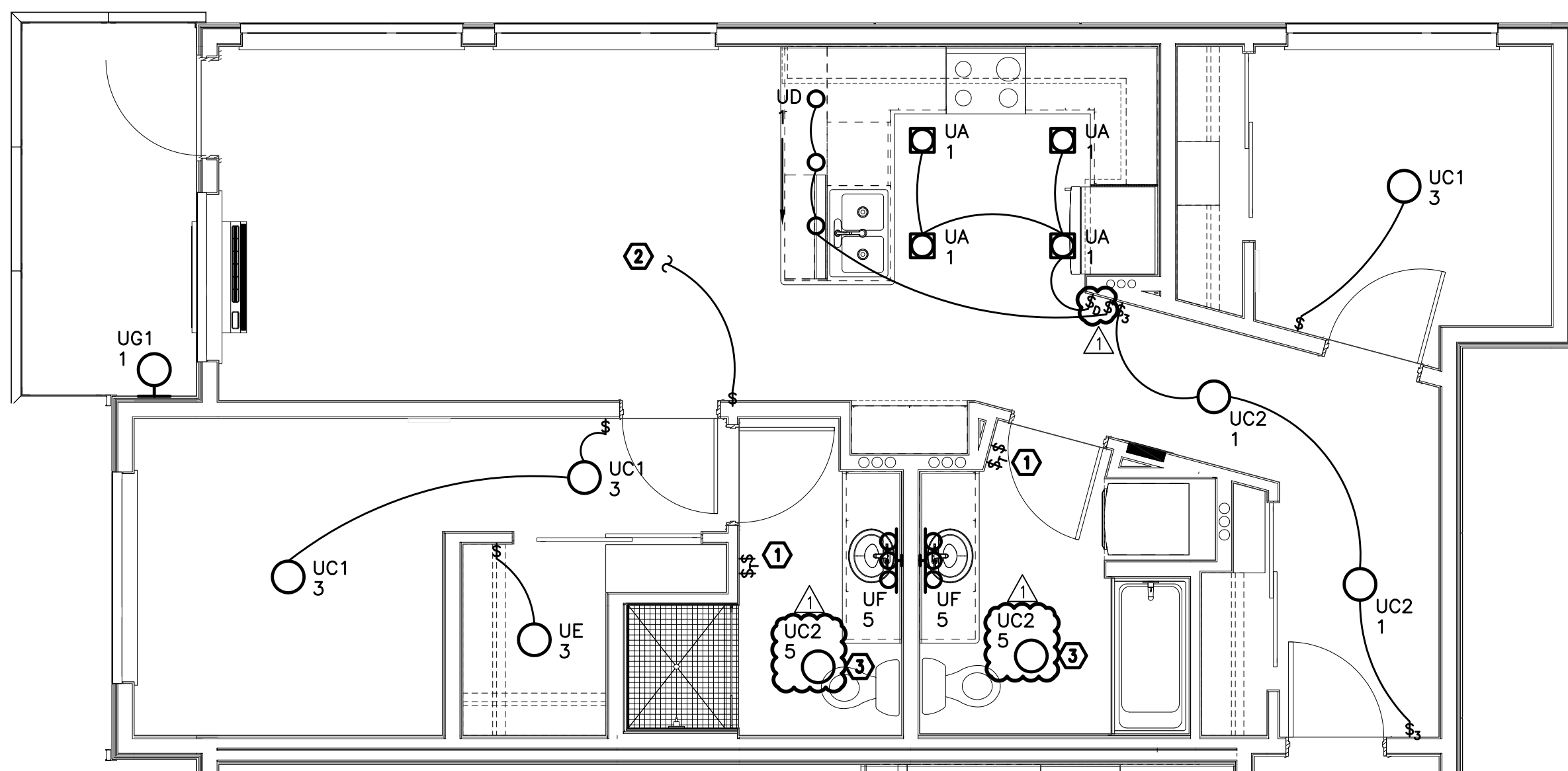
**M  
F  
A  
INC.** Consulting Engineers  
2007 S.E. Ash St.  
Portland, OR 97214  
PHN: (503) 234-0548  
FAX: (503) 234-0877  
WWW.MFIA-ENG.COM  
CONTACT: DENISE TAYLOR



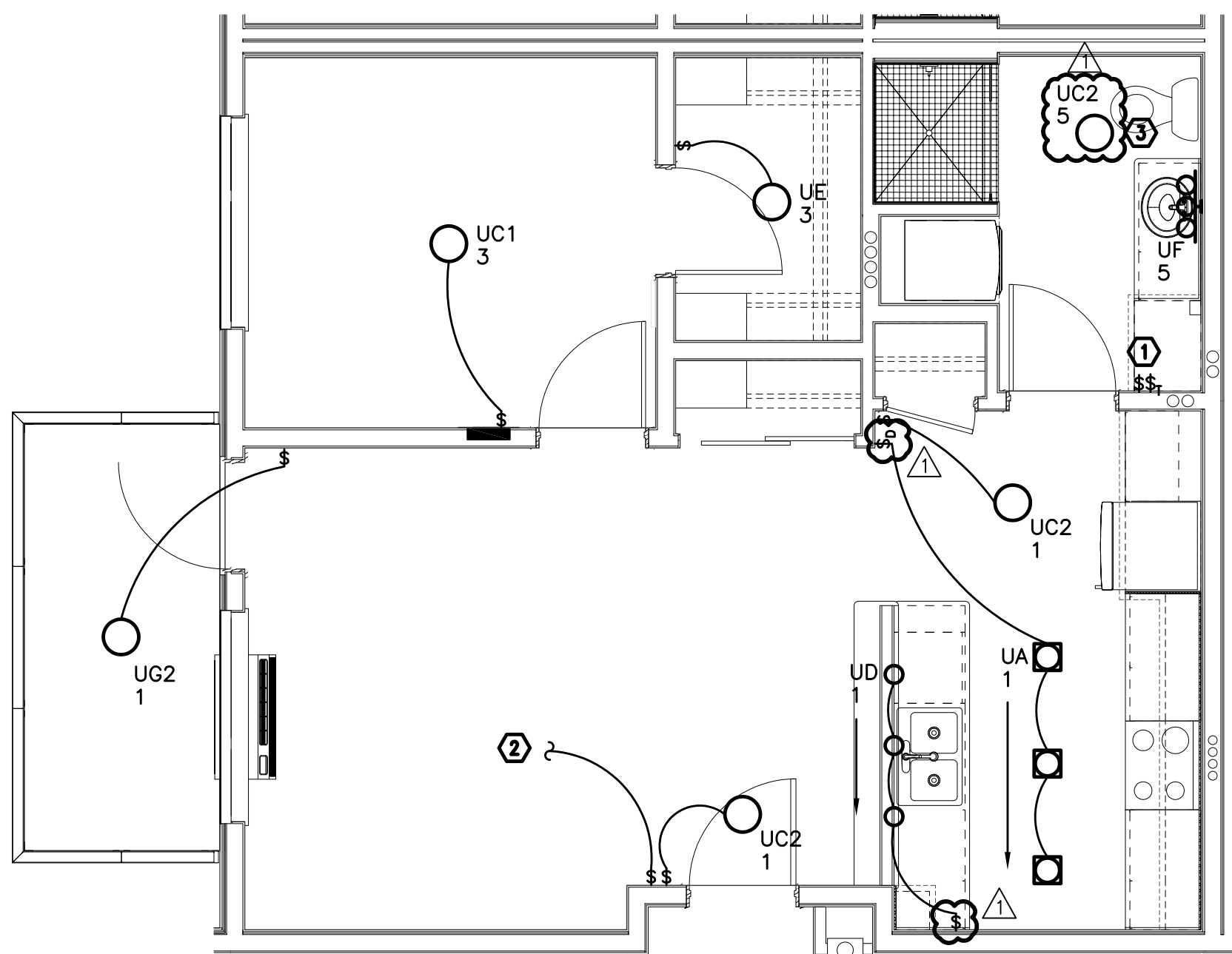
LIGHTING PLAN  
TYPICAL UNIT TYPE A-ADA  
1 E401 SCALE: 1/4" = 1'-0"



LIGHTING PLAN  
TYPICAL UNIT TYPE B  
2 E401 SCALE: 1/4" = 1'-0"



LIGHTING PLAN  
TYPICAL UNIT TYPE C  
3 E401 SCALE: 1/4" = 1'-0"



LIGHTING PLAN  
TYPICAL UNIT TYPE D  
4 E401 SCALE: 1/4" = 1'-0"

#### GENERAL NOTES (APARTMENT UNITS):

- ALL PLANS ARE DIAGRAMMATICAL. CONSULT ARCHITECTURAL PLANS FOR EXACT LOCATION OF ALL DEVICES AND FIXTURES.
- REFER TO SHEET E1.14 FOR TYPICAL UNIT LOAD CENTER DIRECTORIES.
- ALL LIGHT SWITCHES SHALL BE ROCKER STYLE, SUCH AS LEVITON DECORA, OR APPROVED EQUAL.

#### KEYED NOTES (APARTMENT UNITS):

- REFER TO TYPICAL BATHROOM SWITCHING DETAILS ON SHEET E1.22.
- SWITCHED RECEPTACLE. REFER TO SHEETS E4.11 THRU E4.13 FOR RECEPTACLE LOCATION.
- PROVIDE CEILING MOUNTED LIGHT FIXTURE AS INDICATED IN BATHROOMS. FOR BATHROOMS ON EXTERIOR WALLS, PROVIDE FIXTURE TYPE "UH" IN LIEU OF TYPE "UC2".