

IN THE EVENT CONFLICTS ARE DISCOVERED  
BETWEEN THE ORIGINAL SIGNED AND SEALED  
DOCUMENTS PREPARED BY THE ARCHITECTS  
AND/OR THEIR CONSULTANTS, AND ANY COPY OF  
THE DOCUMENTS TRANSMITTED BY MAIL, FAX,  
ELECTRONICALLY OR OTHERWISE, THE ORIGINAL  
SIGNED AND SEALED DOCUMENTS SHALL GOVERN.

PROJECT # 2014-75  
DATE: 10-08-2015

## REVISIONS

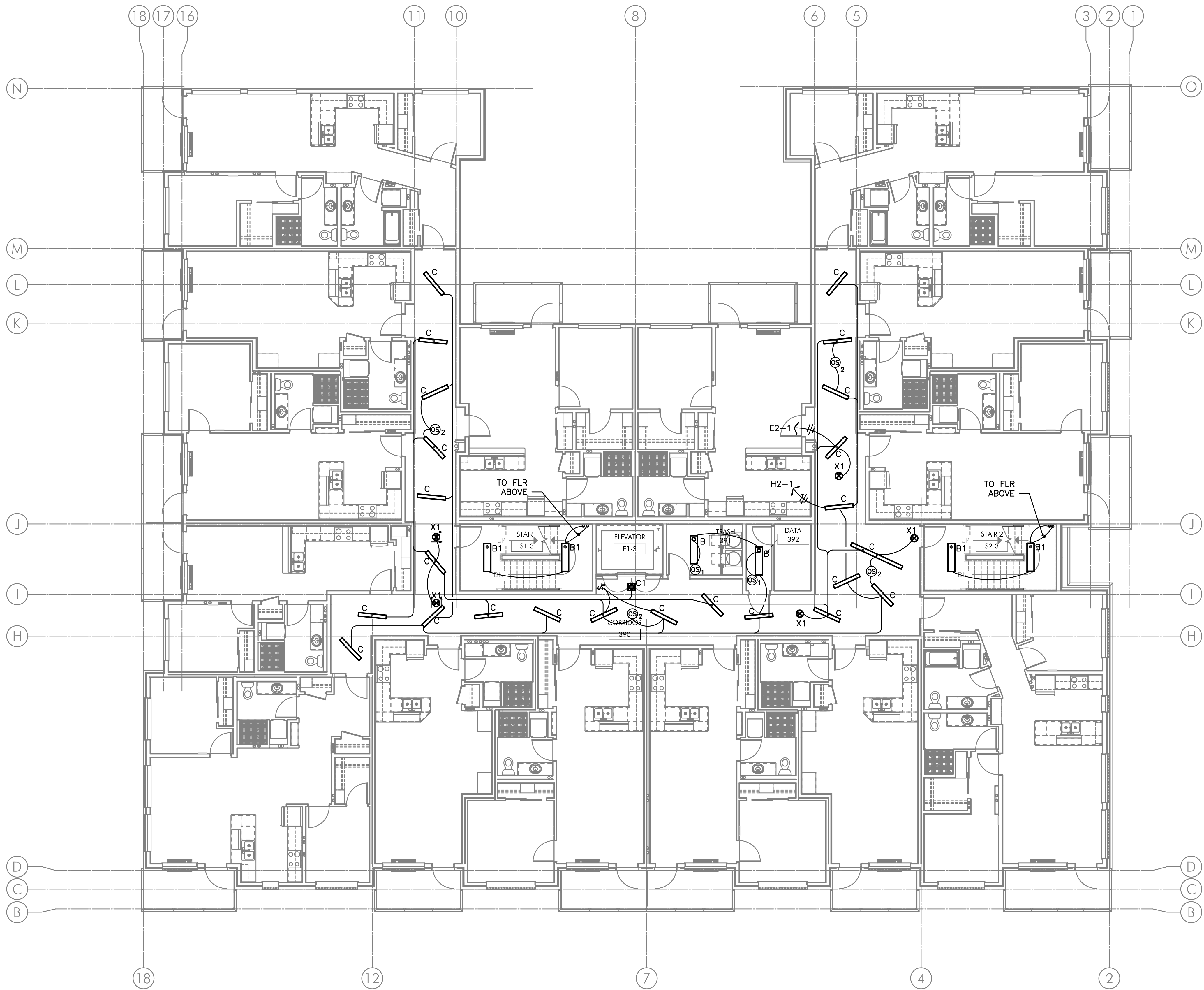
02.05.16 PLAN REVIEW

**VANCOUVER AVE PHASE II  
MIXED USE BUILDING**  
NEC N VANCOUVER AVE & N SHAVER ST, PORTLAND, OR 97227

SHEET:  
**E2.03**

## GENERAL NOTES:

- A. ELECTRICAL DRAWINGS ARE DIAGRAMMATICAL AND MAY NOT ACCURATELY REFLECT ACTUAL CONSTRUCTION CONDITIONS. THE ELECTRICAL CONTRACTOR SHALL BE RESPONSIBLE FOR COORDINATING THE INSTALLATION OF ALL ELECTRICAL EQUIPMENT, WITH ALL TRADES PRIOR TO AND DURING CONSTRUCTION.
- B. LIGHTING AND RECEPTACLES IN THE RETAIL LEASE SPACES SHALL BE PROVIDED WITH TEMPORARY CIRCUITS FROM THE HOUSE BRANCH PANELS AS INDICATED ON THE PLANS. AT SUCH TIME THAT EACH SPACE IS LEASED AND BUILT TO SUIT THE TENANT, THE TEMPORARY POWER CIRCUITS SHALL BE DISCONNECTED AND REMOVED, WITH THE BREAKERS NOTED AS "SPARE".
- C. THE ELECTRICAL CONTRACTOR SHALL REFER TO THE ARCHITECTURAL DRAWINGS FOR ALL MOUNTING HEIGHTS AND FINISHES OF DEVICES AND FIXTURES.
- D. REFER TO E400 SERIES SHEETS FOR TYPICAL APARTMENT UNIT POWER AND LIGHTING LAYOUT.
- E. REFER TO E1.21 FOR LUMINAIRE SCHEDULE.



1 THIRD FLOOR LIGHTING PLAN  
E2.03 SCALE: 1/8" = 1'-0"

**M  
F  
A**  
INC. Consulting Engineers  
2007 S.E. Ash St.  
Portland, OR 97214  
PHN: (503) 234-0548  
FAX: (503) 234-0677  
WWW.MFIA-ENG.COM  
CONTACT: DENISE TAYLOR