

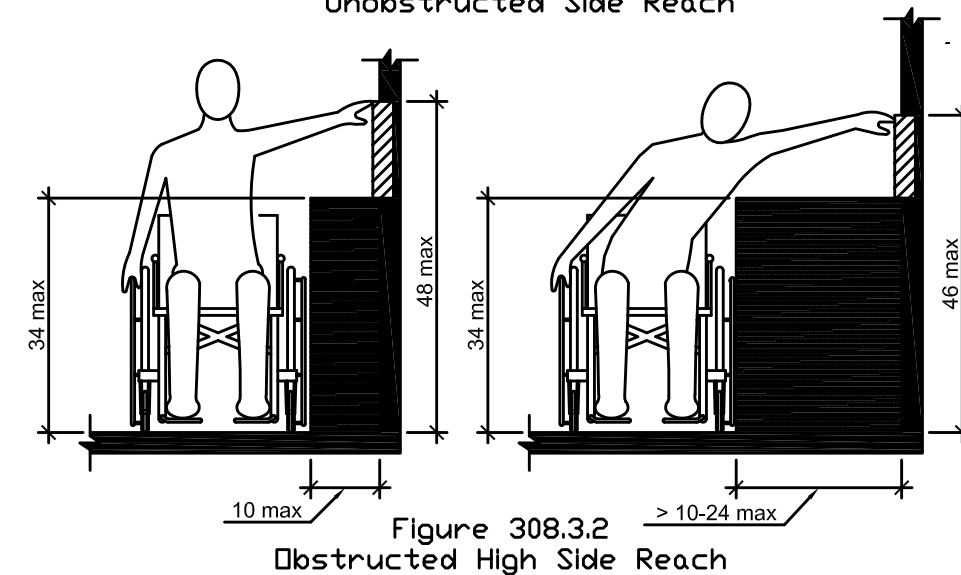
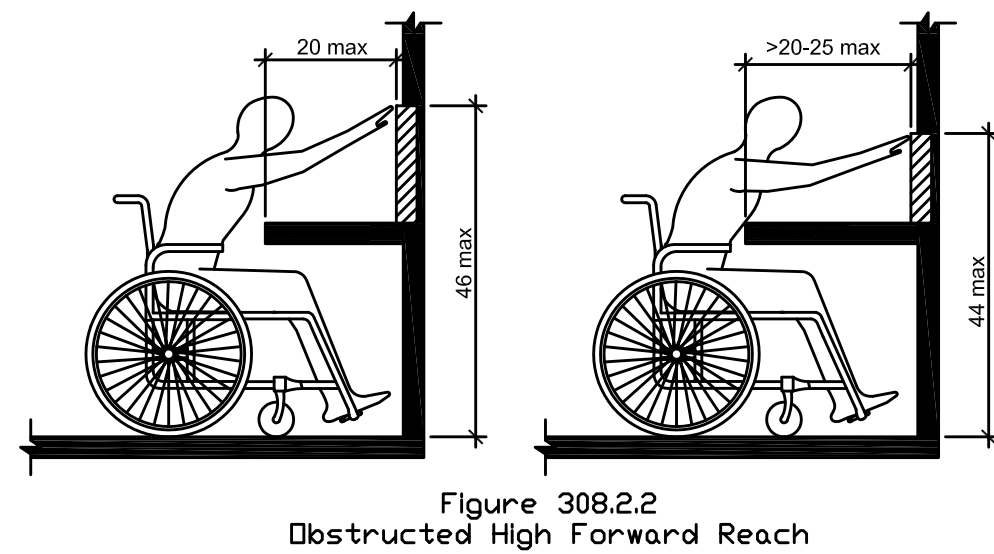
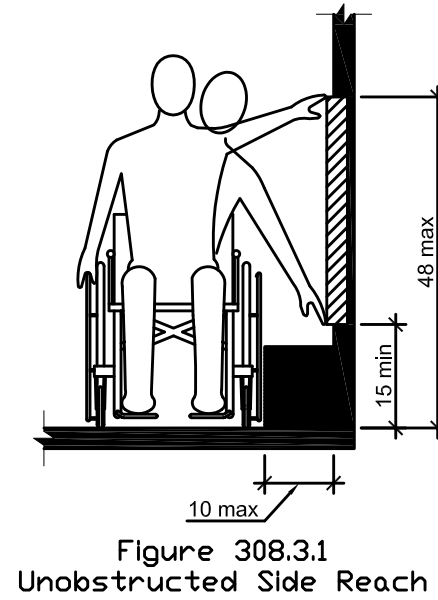
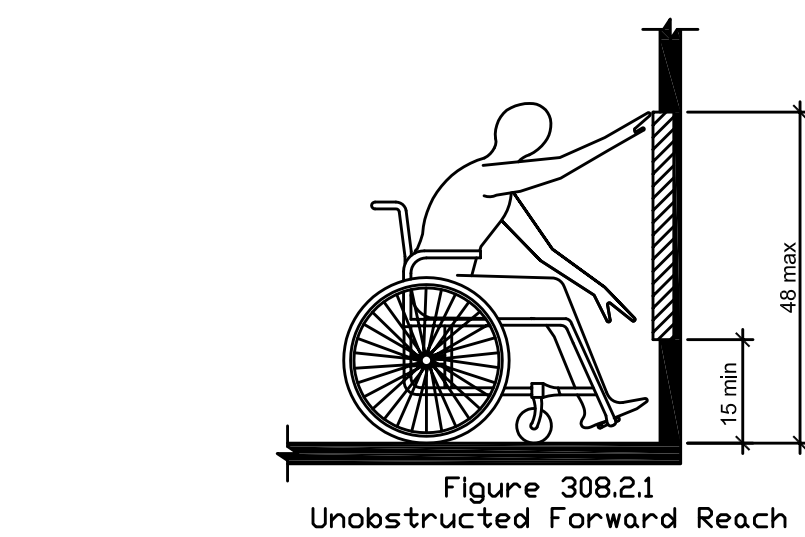
ADDRESSABLE DETECTOR CONTROL

A RELAY TO BE 'NORMALLY OPEN'. TDOD (TIME DELAY ON DE-ENERGY) SET FOR 15 SECONDS. RELAY TO CLOSE UPON SIGNAL FROM HVAC CONTROL SYSTEM (ALLOWS DAMPER TO OPEN); DAMPERS TO CLOSE ON DE-ENERGIZE AFTER 15 SEC. TIME-OUT. PROVIDE WITH 20A CONTACTS AND COIL VOLTAGE AS REQ'D BY HVAC CONTROL SYSTEM. MOUNT RELAY IN NEMA 1 ENCLOSURE ADJACENT TO HVAC CONTROL PANEL.

B RELAY TO BE 'NORMALLY ENERGIZED'. RELAY TO BE DE-ENERGIZED UPON SIGNAL FROM FIRE ALARM SYSTEM (ALLOWS DAMPERS TO CLOSE). PROGRAM FIRE ALARM SYSTEM FOR 15 SECOND DELAY BETWEEN SMOKE DETECTOR ACTIVATION AND FIRE/SMOKE DAMPER SHUTDOWN. PROVIDE WITH 20A CONTACTS AND COIL VOLTAGE AS REQ'D BY FIRE ALARM SYSTEM. MOUNT RELAY IN NEMA 1 ENCLOSURE ADJACENT TO FIRE/SMOKE DAMPER.

1 SMOKE/FIRE DAMPER CONTROL DIAGRAM

E1.22



2 ADA REACH REQUIREMENTS

E1.22 N.T.S.

308.2 Forward Reach.

308.2.1 Unobstructed. Where a forward reach is unobstructed, the high forward reach shall be 48" maximum and the low forward reach shall be 15" minimum above the floor or ground.

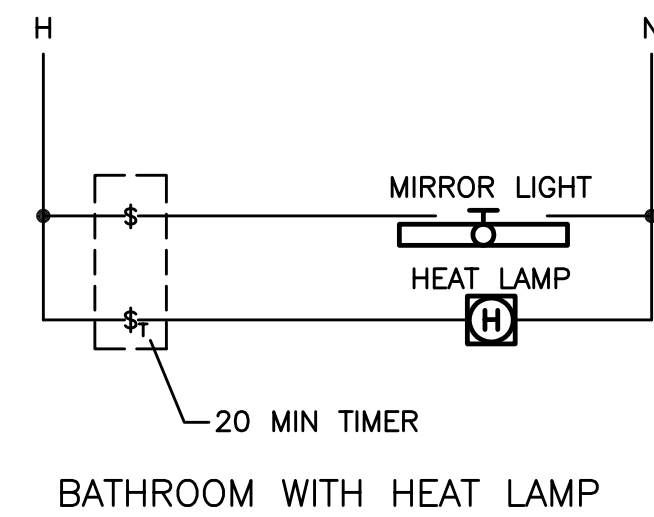
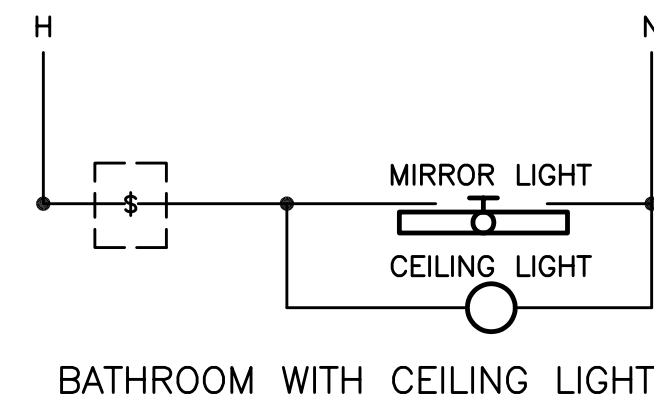
308.2.2 Obstructed High Reach. Where a high forward reach is over an obstruction, the clear floor or ground space shall extend beneath the element for a distance not less than the required reach depth over the obstruction. The high forward reach shall be 48" maximum where the reach depth is 20" maximum. Where the reach depth exceeds 20", the high forward reach shall be 44" maximum and the reach depth shall be 25" maximum.

308.3 Side Reach.

308.3.1 Unobstructed. Where a clear floor or ground space allows a parallel approach to an element and the side reach is unobstructed, the high side reach shall be 48" maximum and the low side reach shall be 15" minimum above the floor or ground.

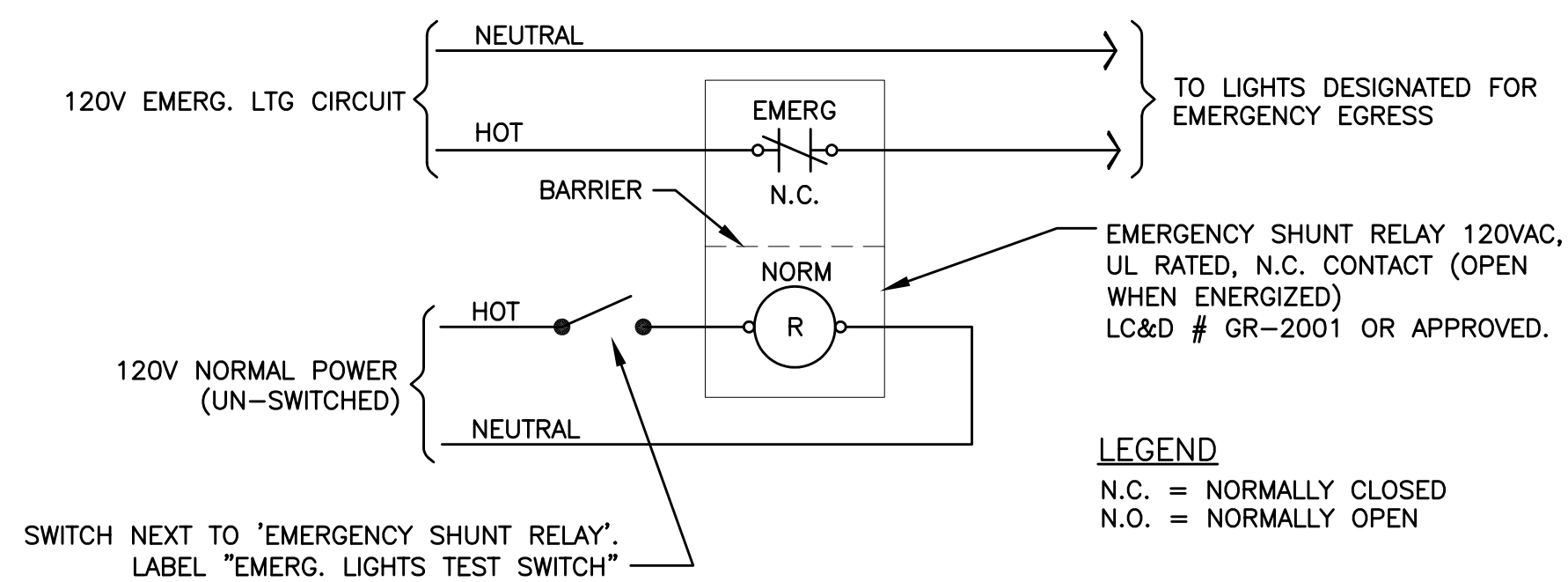
Exception: Existing elements shall be permitted at 54" maximum above the floor or ground.

308.3.2 Obstructed High Reach. Where a clear floor or ground space allows a parallel approach to an object and the high side reach is over an obstruction, the height of the obstruction shall be 34" maximum and the depth of the obstruction shall 24" maximum. The high side reach shall be 48" maximum for a reach depth of 10" maximum. Where the reach depth exceeds 10", the high side reach shall be 46" maximum for a reach depth of 24" maximum.



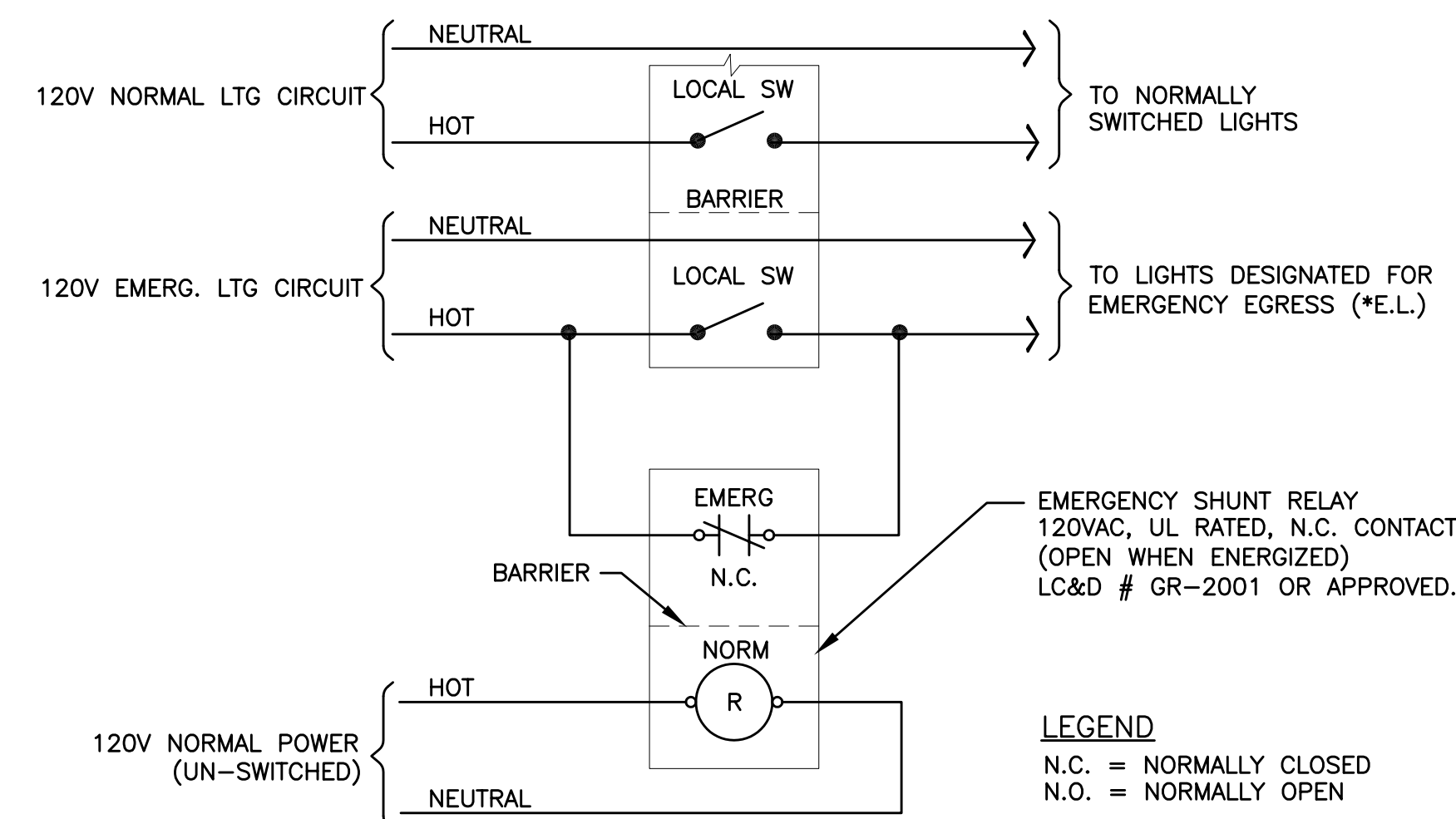
3 BATHROOM SWITCHING DIAGRAM - TYPICAL

E1.22 NO SCALE



4 EMERGENCY EGRESS LIGHTING - UNSWITCHED

E1.22 NO SCALE



5 EMERGENCY EGRESS LIGHTING - SWITCHED

E1.22 NO SCALE