

IN THE EVENT CONFLICTS ARE DISCOVERED BETWEEN THE ORIGINAL SIGNED AND SEALED DOCUMENTS PREPARED BY THE ARCHITECTS AND/OR THEIR CONSULTANTS, AND ANY COPY OF THE DOCUMENTS TRANSMITTED BY MAIL, FAX, ELECTRONICALLY OR OTHERWISE, THE ORIGINAL SIGNED AND SEALED DOCUMENTS SHALL GOVERN.

PROJECT # 2017-110

DATE: 06/16/2021
PERMIT SET

REVISIONS

GENERAL NOTES:

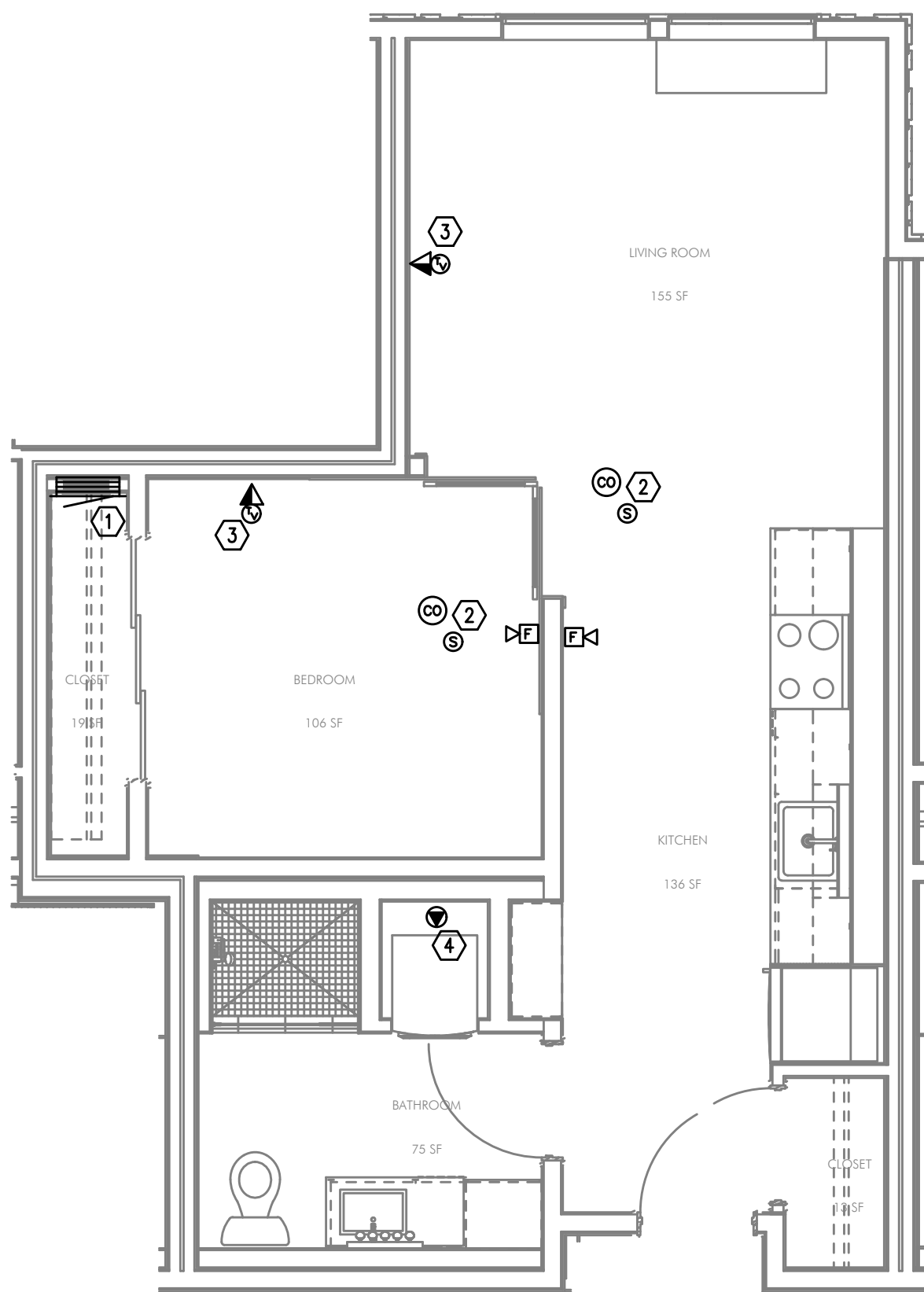
- A. DRAWINGS ARE DIAGRAMMATICAL AND MAY NOT ACCURATELY REFLECT ACTUAL CONSTRUCTION CONDITIONS. THE CONTRACTOR SHALL BE RESPONSIBLE FOR COORDINATING THE INSTALLATION OF ALL EQUIPMENT THEY ARE INSTALLING, WITH ALL TRADES PRIOR TO AND DURING CONSTRUCTION.
- B. FOR VOICE/DATA OUTLETS PROVIDE A SINGLE GANG MUD-RING OUTLET SHALL BE AT THE SAME HEIGHT AS ADJACENT POWER OUTLET AND LESS THAN 18" SEPARATION. COORDINATE WITH ELECTRICAL.
- C. COORDINATE ALL DEVICE LOCATIONS WITH LATEST ARCHITECTURAL INTERIOR ELEVATIONS TO VERIFY DEVICES WILL NOT BE OBSTRUCTED.
- D. PROVIDE PULL STRING IN ALL CONDUITS FOR LATER USE.
- E. ALL PENETRATIONS THROUGH FIREWALLS WILL NEED FIRESTOP OF THE APPROPRIATE RATING.

KEYED NOTES:

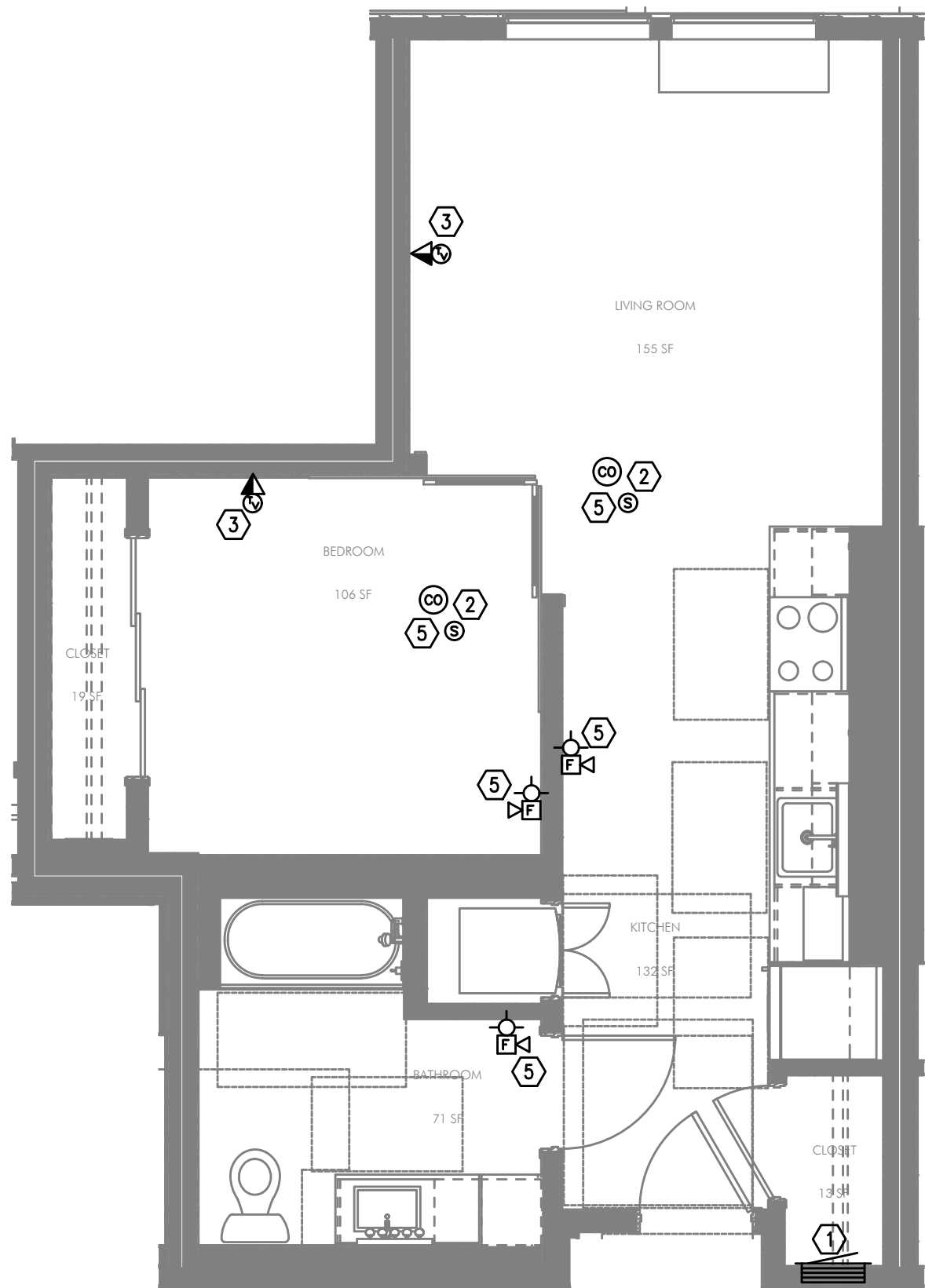
1. SMART PANEL FOR UTILITY DEMARCATION WITHIN UNIT. PROVIDE 42" RF TRANSPARENT PANEL.
2. SMOKE AND CO DETECTOR CAN BE A SINGLE UNIT.
3. (1) COAXIAL AND (1) CATEGORY CABLES AND OUTLETS PER FACEPLATE.
4. PROVIDE 3-CONDUCTOR, 20AWG SHIELDED CABLE FROM WATER METER TO THE ELEC OR IDF SPACE ON THE ASSOCIATED FLOOR.
5. PROVIDE 'ADA' COMPLAINT DEVICES FOR SMOKE DETECTORS AND ANNUNCIATORS.

FIRE ALARM AND DETECTION SYSTEM SHOWN ON PLAN(S) ARE FOR DESIGN INTENT ONLY. THIS IS A DEFERRED SUBMITTAL SYSTEM REQUIRING THE CONTRACTOR TO COMPLETE THE PERMIT READY DESIGN AND CALCULATIONS AS REQUIRED PER THE AUTHORITY HAVING JURISDICTION. VERIFY BUILDING OCCUPANCY TYPE AND OCCUPANT LOAD WITH ARCHITECTURAL PLANS.

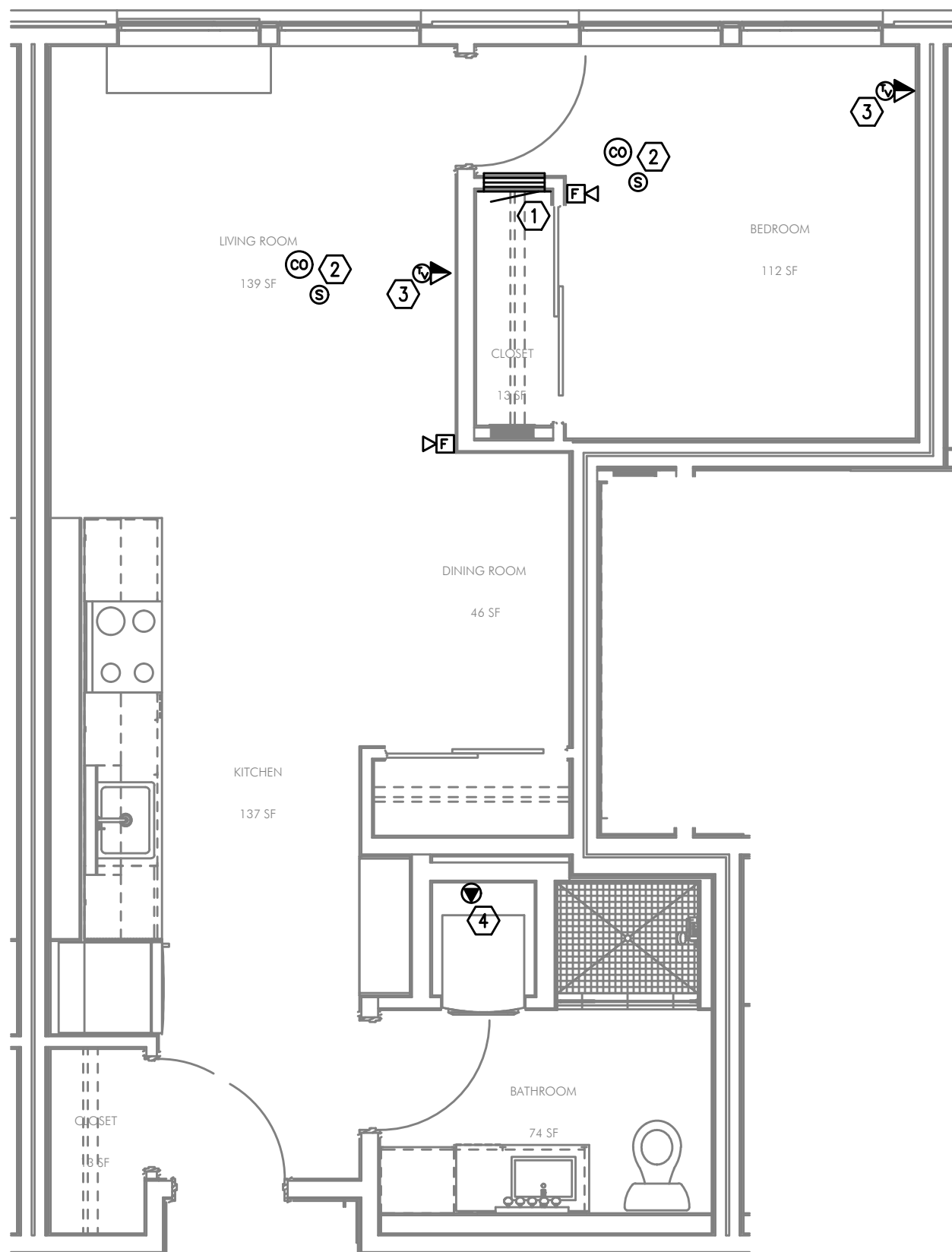
MEIA Consulting Engineers
2007 S.E. Ash St.
Portland, OR 97214
PHN: (503) 234-0548
FAX: (503) 234-0877
INC. WWW.MPIA-ENG.COM
CONTACT: GARY ADOVNIK



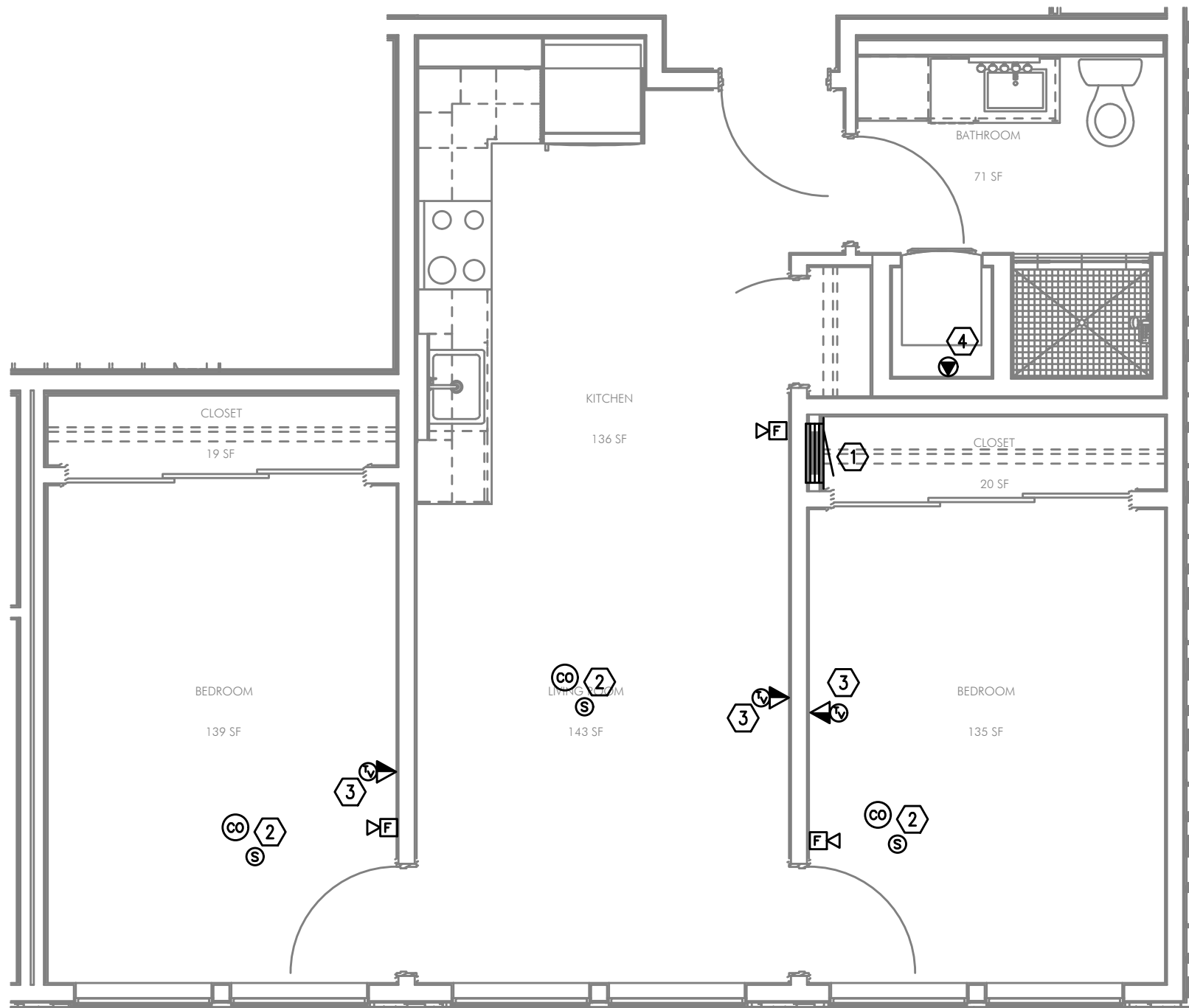
1 UNIT TYPE 'H' — TELCOM PLAN
T4.14 1/4" = 1'-0"



2 UNIT TYPE 'H' ADA — TELCOM PLAN
T4.14 1/4" = 1'-0"



3 UNIT TYPE 'I' — TELCOM PLAN
T4.14 1/4" = 1'-0"



4 UNIT TYPE 'J' — TELCOM PLAN
T4.14 1/4" = 1'-0"

**BURNSIDE
MIXED USE**
2202 E BURNSIDE ST, PORTLAND, OR 97214

SHEET:

T4.14

ENLARGED UNIT TECHNOLOGY PLAN