

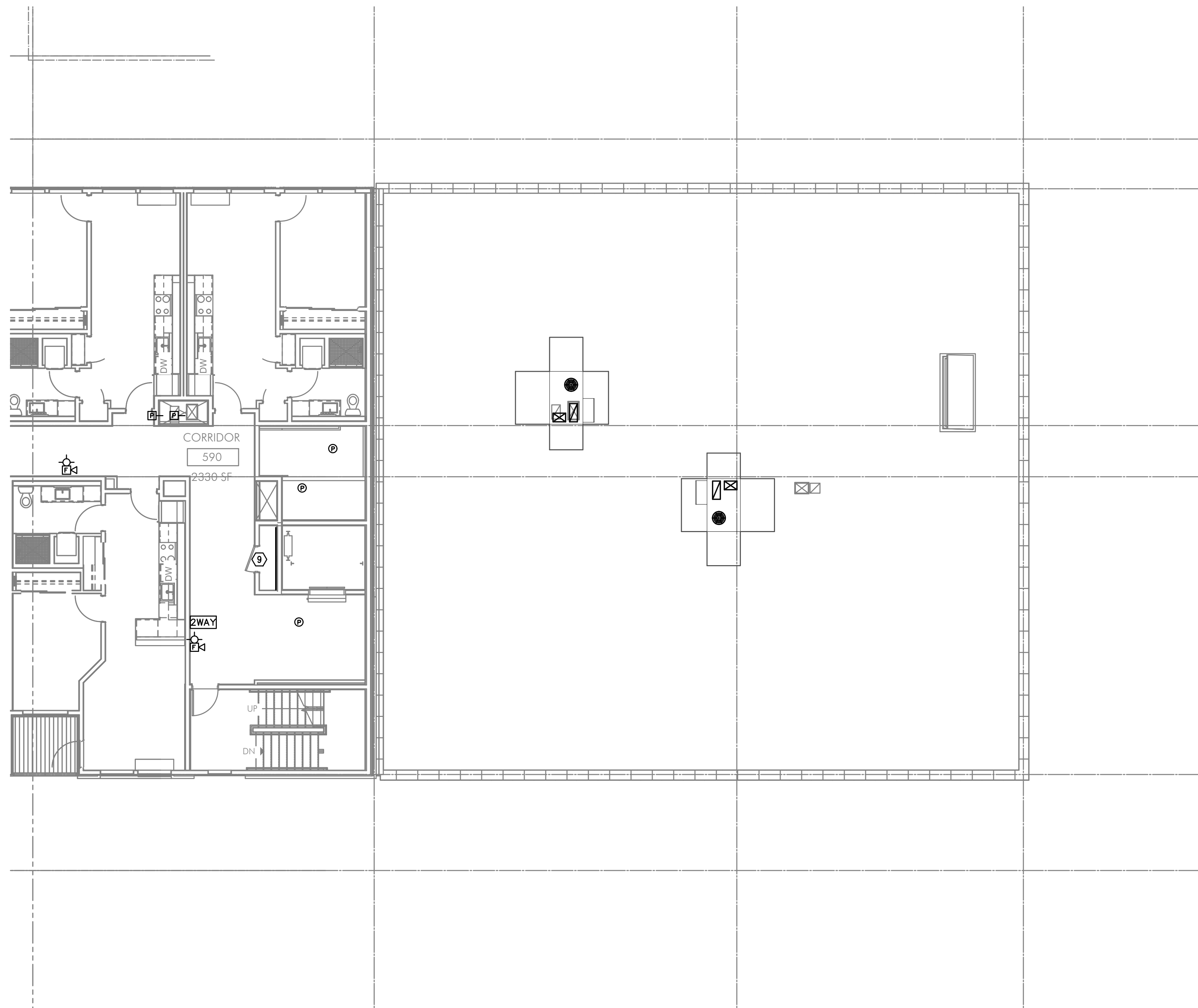


IN THE EVENT CONFLICTS ARE DISCOVERED
BETWEEN THE ORIGINAL SIGNED AND SEALED
DOCUMENTS PREPARED BY THE ARCHITECTS
AND/OR THEIR CONSULTANTS, AND ANY COPY OF
THE DOCUMENTS TRANSMITTED BY MAIL, FAX,
ELECTRONICALLY OR OTHERWISE, THE ORIGINAL
SIGNED AND SEALED DOCUMENTS SHALL GOVERN.

PROJECT # 2017-110

DATE: 06/16/2021
PERMIT SET

REVISIONS

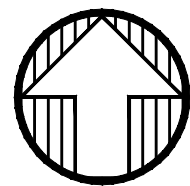
BURNSIDE
MIXED USE
2202 E BURNSIDE ST, PORTLAND, OR 97214

GENERAL NOTES:

- TECHNOLOGY DRAWINGS ARE DIAGNAMMATICAL AND MAY NOT ACCURATELY REFLECT ACTUAL CONSTRUCTION CONDITIONS. THE TECHNOLOGY CONTRACTOR SHALL BE RESPONSIBLE FOR COORDINATING THE INSTALLATION OF ALL TECHNOLOGY EQUIPMENT, WITH ALL TRADES PRIOR TO AND DURING CONSTRUCTION.
- TECHNOLOGY ENTRANCE LOCATION DESIGN IS BASED ON INFORMATION PROVIDED BY THE UTILITY THRU THE DESIGN PROCESS. HOWEVER IT IS UP TO THE CONTRACTOR TO VERIFY CONDITIONS AND REQUIREMENTS HAVE NOT CHANGED PRIOR TO THE INSTALLATION DATE.
- COORDINATE WITH LOCAL UTILITY PROVIDER FOR EXACT SERVICE CONDUIT SIZES AND LOCATION TO ROUTE TO CONDUIT TO.
- CUSTOMER TO PROVIDE ALL TRENCHING AND BACKFILLING. TRENCH TO BE 36 INCHES DEEP AND 30 INCHES WIDE, MEASURED FROM FINAL GRADE.
- CONSULT WITH UTILITY PROVIDER REPRESENTATIVE 2 WEEKS BEFORE STARTING MAIN POWER TRENCHING FOR A PRE-CONSTRUCTION CONFERENCE. INCLUDED IN THIS CONFERENCE WILL BE EXCAVATOR, TECHNOLOGY UTILITY PROVIDER, TELCO, AND CATV.
- THE TECHNOLOGY CONTRACTOR SHALL REFER TO THE ARCHITECTURAL DRAWINGS FOR ALL MOUNTING HEIGHTS AND FINISHES OF DEVICES AND FIXTURES.
- COORDINATE WITH MECHANICAL PLANS FOR LOCATIONS OF SMOKE, FIRE/SMOKE DAMPERS, AND ROOF TOP UNITS REQUIRING CONNECTION TO FIRE ALARM SYSTEM.
- FOR VOICE/DATA OUTLETS PROVIDE A SINGLE GANG MUD-RING. OUTLET SHALL BE AT THE SAME HEIGHT AS ADJACENT POWER OUTLET AND LESS THAN 18" SEPARATION. COORDINATE WITH ELECTRICAL.
- COORDINATE ALL DEVICE LOCATIONS WITH LATEST ARCHITECTURAL INTERIOR ELEVATIONS TO VERIFY DEVICES WILL NOT BE OBSTRUCTED.
- REFER TO ENLARGED TYPICAL UNIT PLANS (IF PROVIDED) FOR TYPICAL LAYOUTS FOR ALL APARTMENT UNIT TYPES.

PLAN NOTES:

- DATA OUTLET FOR MAIL BOX SYSTEM. COORDINATE OUTLET LOCATION WITH ARCHITECT AND MAIL BOX MANUFACTURER AND INSTALLER.
- VERIFY EXACT LOCATION AND COUNT OF SMOKE AND FIRE/SMOKE DAMPERS WITH MECHANICAL PLANS AND PROVIDE DUCT DETECTION AS NECESSARY.
- SPACE RESERVED FOR FUTURE 'BAS' SYSTEM. SYSTEM TO BE DESIGNED BY OTHERS.
- SPACE RESERVED FOR ACCESS/ENTRY SYSTEM.
- SPACE RESERVED FOR SECURITY AND CCTV SYSTEM.
- BUTTERFLY MAY 11.5T ENTRY AND ACCESS CONTROL SYSTEM. PROVIDE CATEGORYISE CABLE FOR NETWORK CONNECTION.
- PROVIDE A SINGLE CATEGORY 5E CABLE AT ALL ACCESS CONTROLLED DOORS.
- COMCAST AND CENTURYLINK DEMARCATION SPACE.
- COMCAST AND CENTURYLINK INTERMEDIATE DISTRIBUTION POINT.



PARTIAL FIFTH FLOOR TECHNOLOGY PLAN

SCALE: 1/8" = 1'-0"

FIRE ALARM AND DETECTION SYSTEM SHOWN
ON PLAN(S) ARE FOR DESIGN INTENT ONLY.
THIS IS A DEFERRED SUBMITTAL SYSTEM
REQUIRING THE CONTRACTOR TO COMPLETE
THE PERMIT READY DESIGN AND
CALCULATIONS AS REQUIRED PER THE
AUTHORITY HAVING JURISDICTION. VERIFY
BUILDING OCCUPANCY TYPE AND OCCUPANT
LOAD WITH ARCHITECTURAL PLANS.

**M
E
A** Consulting Engineers
2007 S.E. Ash St.
Portland, OR 97214
PHN: (503) 234-0548
FAX: (503) 234-0877
INC. WWW.MPIA-ENG.COM
CONTACT: GARY ADOVNIK

SHEET:

SE
T3.05

LEVEL 5 TECHNOLOGY FLOOR PLAN-SOUTHEAST