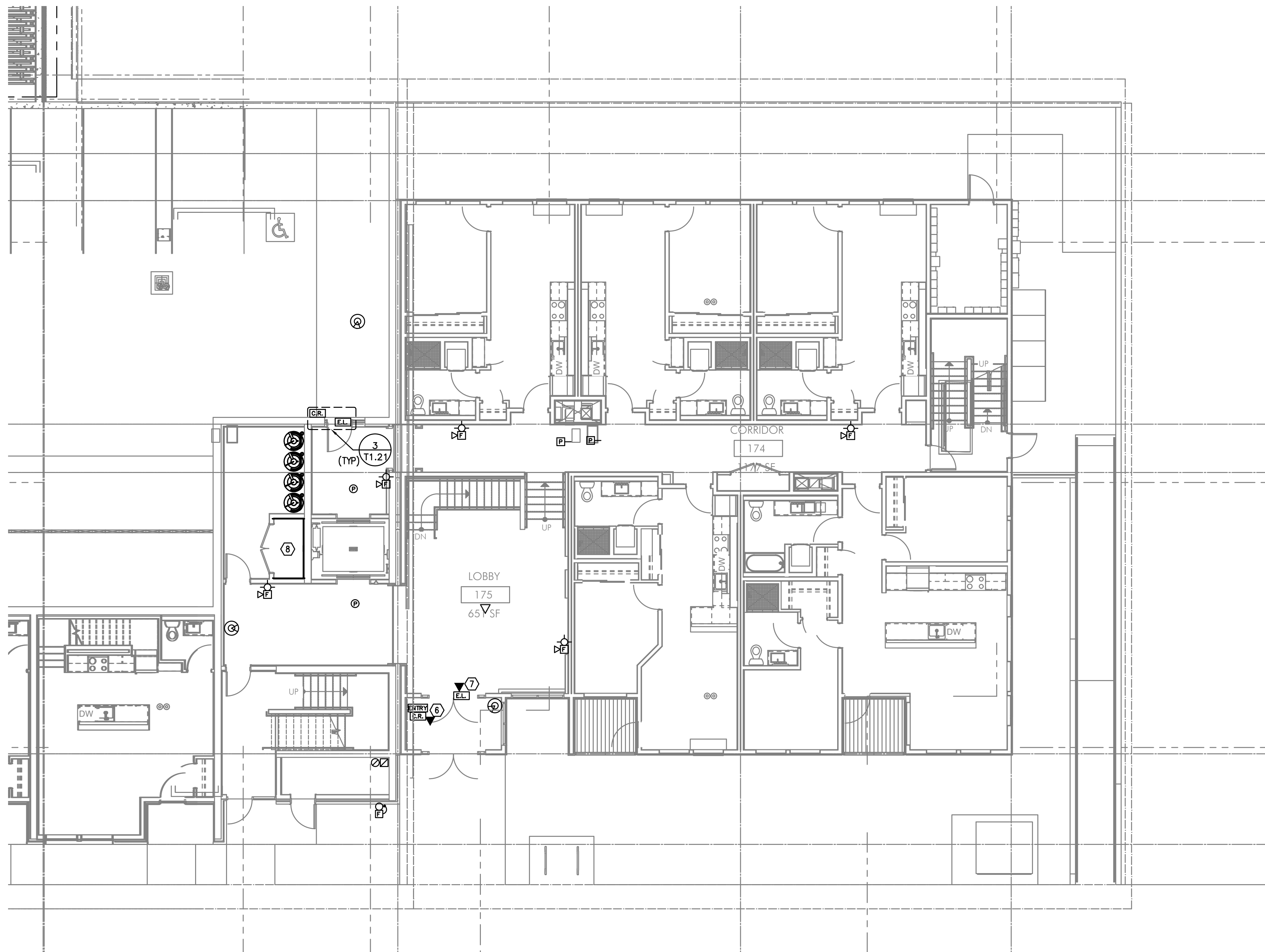


PROJECT # 2017-110  
DATE: 06/16/2021  
PERMIT SET

**BURNSIDE  
MIXED USE**

# SE T3.01

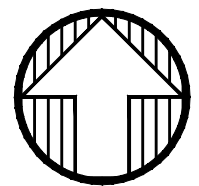
#### TECHNOLOGY FLOOR PLAN-SOUTHEAST



- 7. TECHNOLOGY DRAWINGS ARE DIAGRAMMATIC, AND MAY NOT ACCURATELY REFLECT ACTUAL CONDITIONS. THE TECHNOLOGY CONTRACTOR SHALL BE RESPONSIBLE FOR COORDINATING THE INSTALLATION OF ALL TECHNOLOGY EQUIPMENT, WITH ALL TRACES PURED UP AND DURING CONSTRUCTION.
- 8. TECHNOLOGY ENTRANCE LOCATION DESIGN IS BASED ON INFORMATION PROVIDED BY THE UTILITY PROVIDER. THE TECHNOLOGY CONTRACTOR SHALL BE RESPONSIBLE FOR VERIFYING CONDITIONS AND REQUIREMENTS HAVE NOT CHANGED PRIOR TO THE INSTALLATION DATE.
- 9. COORDINATE WITH LOCAL UTILITY PROVIDER FOR EXACT SERVICE CONDUIT SIZES AND LOCATION TO ROUTE TO CONDUIT TO.
- 10. CUSTOMER TO PROVIDE ALL TRENDING AND BACKFILLING. TRENCH TO BE 36 INCHES DEEP AND 30 INCHES WIDE MEASURED FROM FINAL GRADE.
- 11. CONSULT WITH UTILITY PROVIDER REPRESENTATIVE 2 WEEKS BEFORE STARTING MAIN POWER TRENCHING FOR PRE-CONSTRUCTION MEETING TO DISCUSS THIS CONFORMANCE WILL BE EXAGVATOR, TECHNOLOGY UTILITY PROVIDER, TELCO, AND CATV.
- 12. THE TECHNOLOGY CONTRACTOR SHALL REFER TO THE ARCHITECTURAL DRAWINGS FOR ALL MOUNTING HEIGHTS AND FINISHES OF DEVICES AND FIXTURES.
- 13. COORDINATE WITH MECHANICAL PLANS FOR LOCATIONS OF SMOKE, FIRE/SMOKE DAMPERS, AND ROOF FLASHING REQUIREMENTS CONFORM TO THE ALARM SYSTEM.
- 14. FOR VOICE/DATA OUTLETS PROVIDE A SINGLE GANGE MID-RANGE, OUTLET SHALL BE AT THE SAME HEIGHT AS ADJACENT POWER OUTLET AND LESS THAN 18" SEPARATION, COORDINATE WITH ELECTRICAL.
- 15. COORDINATE ALL DEVICE LOCATIONS WITH LATEST ARCHITECTURAL INTERIOR ELEVATIONS TO AVOID REDUNDANCY, NOT BE OBSTRUCTED.
- 16. REFER TO ENLARGED TYPICAL FLOOR PLANS (IF PROVIDED) FOR TYPICAL LAYOUTS FOR ALL APARTMENT UNIT TYPES.

1. DATA OUTLET FOR MAIL BOX SYSTEM, COORDINATE OUTLET LOCATION WITH ARCHITECT AND MAIL BOX MANUFACTURER AND INSTALLER.
2. VERIFY EXIST LOCATION LOCATION OF CLOUT AND SMOKE AND FIRE/SMOKE DAMPERS WITH MECHANICAL PLANS AND PROVIDE DUCT DETECTION AS NECESSARY.
3. SPACE RESERVED FOR FUTURE "DAS" SYSTEM. SYSTEM TO BE PROVIDED BY OTHERS
4. SPACE RESERVED FOR ACCESS/ENTRY SYSTEM
5. SPACE RESERVED FOR SECURITY AND CCTV SYSTEM
6. BUTTERFLY MISC 11.5" ENTRY AND ACCESS CONTROL SYSTEM. PROVIDE CATEGORY5E CABLE FOR NETWORK CONNECTION.
7. PROVIDE A SINGLE CATEGORY 5E CABLE AT ALL ACCESS CONTROLLED DOORS.
8. dC&CAST AND CENTURYLINK DEMARCAATION SPACE.
9. dC&CAST AND CENTURYLINK INTERMEDIATE DISTRIBUTION POINT.

**MFIA**  
**INC.** Consulting Engineers  
2007 S.E. Ash St.  
Portland, OR 97214  
PHN: (503) 234-0548  
FAX: (503) 234-0677  
WWW.MFIA-ENG.COM  
CONTACT: GARY ADOVNIK



SE PARTIAL FIRST FLOOR TECHNOLOGY PLAN  
T3.01 SCALE: 1/8" = 1'-0"