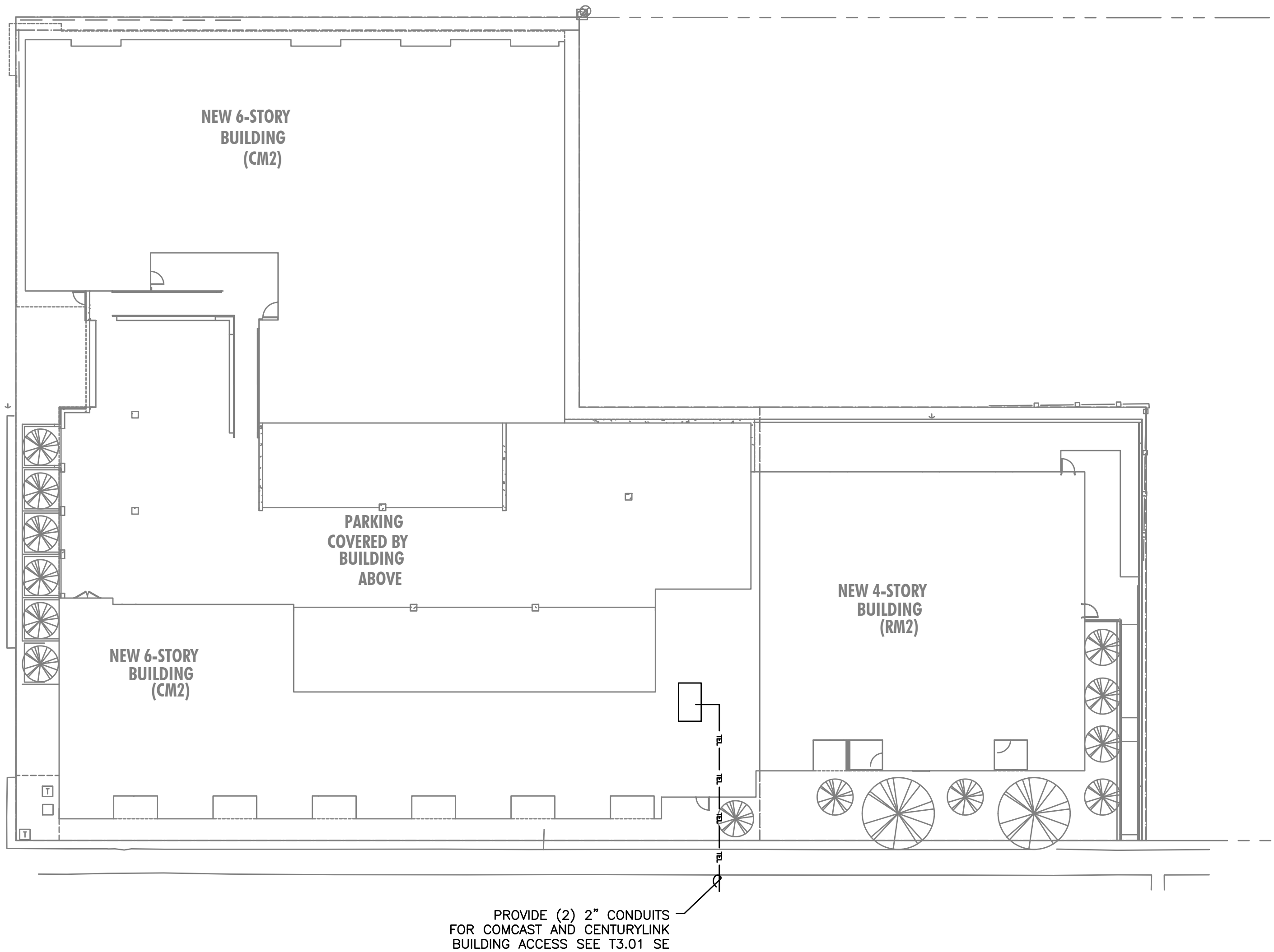


E. BURNSIDE ST.

SE. 22ND AVE.



GENERAL NOTES:

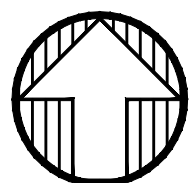
- A. TECHNOLOGY DRAWINGS ARE DIAGRAMMATICAL AND MAY NOT ACCURATELY REFLECT ACTUAL CONSTRUCTION CONDITIONS. THE TECHNOLOGY CONTRACTOR SHALL BE RESPONSIBLE FOR COORDINATING THE INSTALLATION OF ALL TECHNOLOGY EQUIPMENT, WITH ALL TRADES PRIOR TO AND DURING CONSTRUCTION.
- B. TECHNOLOGY ENTRANCE LOCATION DESIGN IS BASED ON INFORMATION PROVIDED BY THE UTILITY THRU THE DESIGN PROCESS. HOWEVER IT IS UP TO THE CONTRACTOR TO VERIFY CONDITIONS AND REQUIREMENTS HAVE NOT CHANGED PRIOR TO THE INSTALLATION DATE.
- C. COORDINATE WITH LOCAL UTILITY PROVIDER FOR EXACT SERVICE CONDUIT SIZES AND LOCATION TO ROUTE TO CONDUIT TO.
- D. CUSTOMER TO PROVIDE ALL TRENCHING AND BACKFILLING. TRENCH TO BE 36 INCHES DEEP AND 30 INCHES WIDE, MEASURED FROM FINAL GRADE.
- E. CONSULT WITH UTILITY PROVIDER REPRESENTATIVE 2 WEEKS BEFORE STARTING MAIN POWER TRENCHING FOR A PRE-CONSTRUCTION CONFERENCE. INCLUDED IN THIS CONFERENCE WILL BE EXCAVATOR, TECHNOLOGY UTILITY PROVIDER, TELCO, AND CATV.

CONTRACTOR TO LOCATE ALL UNDERGROUND UTILITIES BEFORE TRENCHING.

UTILITY REQUIREMENTS

1. CUSTOMER TO PROVIDE ALL TRENCHING AND BACKFILLING. TRENCH TO BE 36 INCHES DEEP AND 30 INCHES WIDE, MEASURED FROM FINAL GRADE.
2. CONSULT WITH UTILITY REPRESENTATIVE 2 WEEKS BEFORE STARTING TRENCHING FOR A PRE-CONSTRUCTION CONFERENCE. INCLUDED IN THIS CONFERENCE WILL BE EXCAVATOR, CPU, TELCO, CATV, AND GAS.
3. UTILIZE SHARED TRENCH WITH ELECTRICAL CONDUITS WHENEVER POSSIBLE, COORDINATE ALL ROUTING, BACKFILL, AND CONDUIT SPACING.

SE. ANKENY ST.



1
T1.01

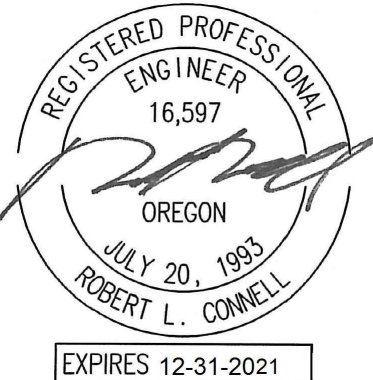
SITE TECHNOLOGY PLAN

SCALE: 1" = 20'-0"

**M
E
A** Consulting Engineers
2007 S.E. Ash St.
Portland, OR 97214
PHN: (503) 234-0548
FAX: (503) 234-0877
INC. WWW.MEIA-ENG.COM
CONTACT: GARY ADOVNIK

STUDIO
3
ARCHITECTURE
INCORPORATED

275 COURT ST. NE
SALEM, OR 97301-3442
P: 503.390.6500
www.studio3architecture.com



IN THE EVENT CONFLICTS ARE DISCOVERED BETWEEN THE ORIGINAL SIGNED AND SEALED DOCUMENTS PREPARED BY THE ARCHITECTS AND/OR THEIR CONSULTANTS, AND ANY COPY OF THE DOCUMENTS TRANSMITTED BY MAIL, FAX, ELECTRONICALLY OR OTHERWISE, THE ORIGINAL SIGNED AND SEALED DOCUMENTS SHALL GOVERN.

PROJECT # 2017-110
DATE: 06/16/2021
PERMIT SET

REVISIONS

**BURNSIDE
MIXED USE**
2202 E BURNSIDE ST, PORTLAND, OR 97214

SHEET:

T1.01

TECHNOLOGY SITE PLAN