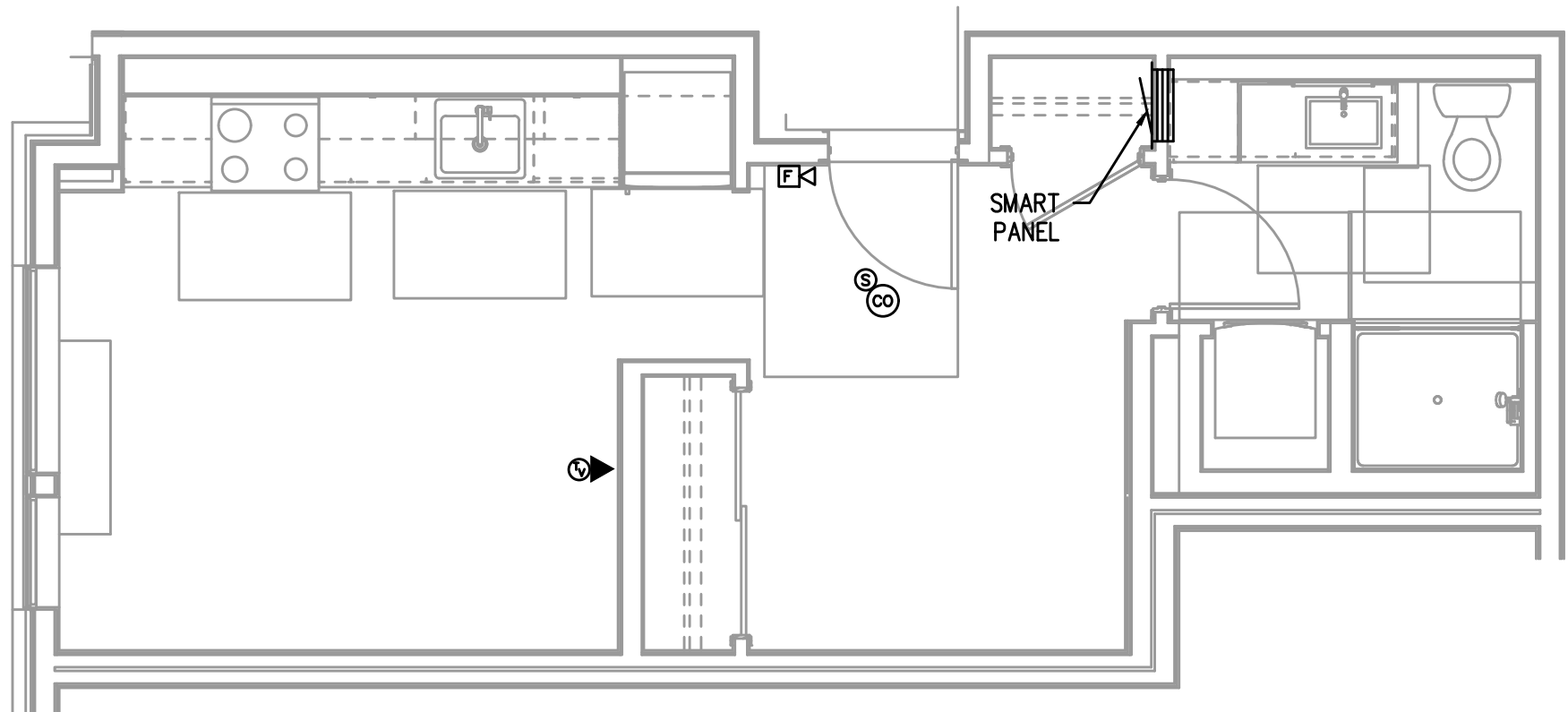
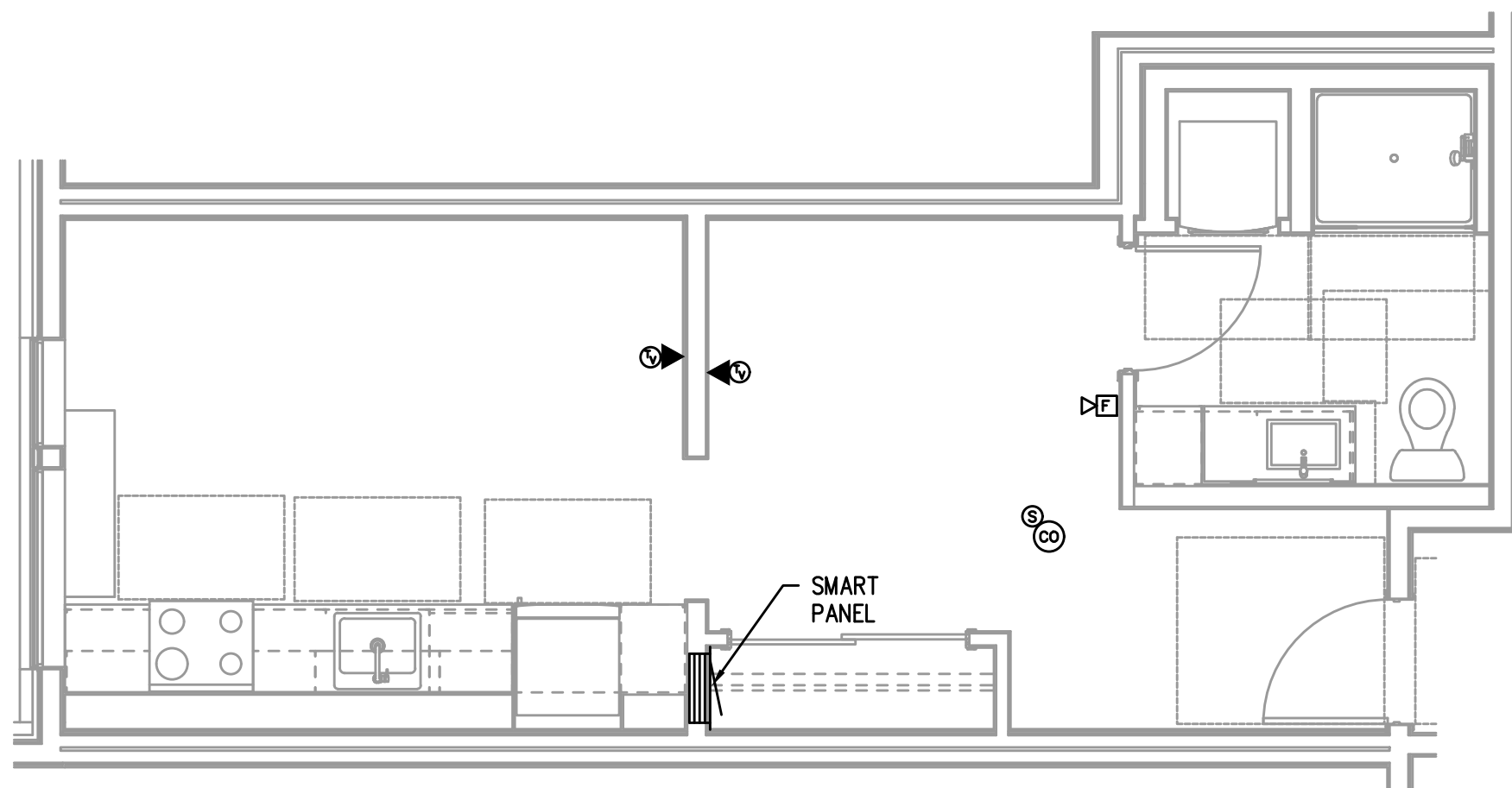


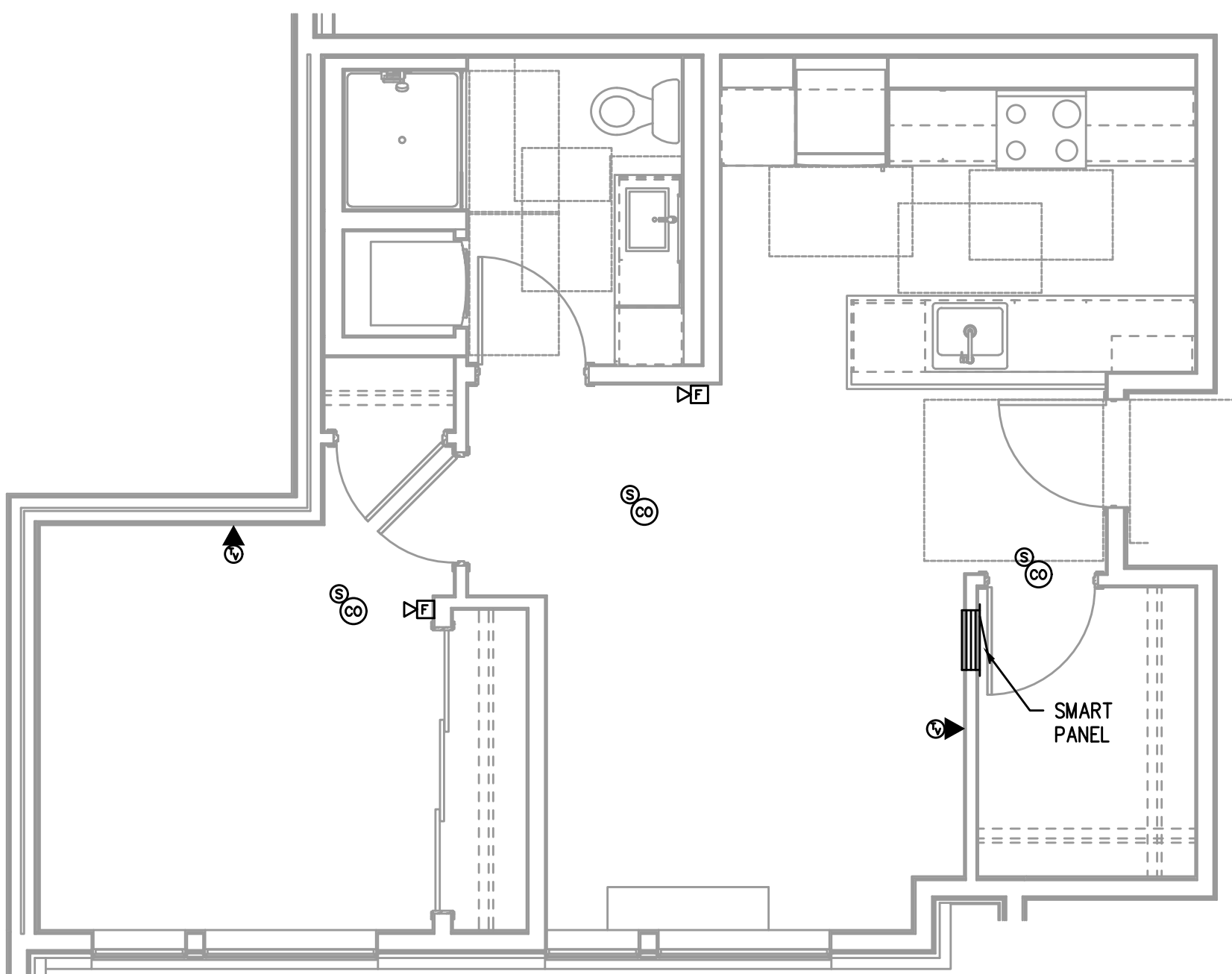
1
T4.08
TYPICAL UNIT TYPE FF – ADA
2 BED/1 BATH – TECHNOLOGY PLAN
SCALE: 1/4" = 1'-0"



3
T4.08
TYPICAL UNIT TYPE HH
0 BED/1 BATH – TECHNOLOGY PLAN
SCALE: 1/4" = 1'-0"



2
T4.08
TYPICAL UNIT TYPE GG
0 BED/1 BATH – TECHNOLOGY PLAN
SCALE: 1/4" = 1'-0"



4
T4.08
TYPICAL UNIT TYPE II
2 BED/1 BATH – TECHNOLOGY PLAN
SCALE: 1/4" = 1'-0"

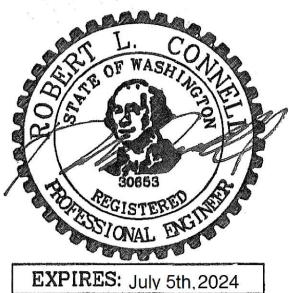
GENERAL NOTES:

- DRAWINGS ARE DIAGRAMMATICAL AND MAY NOT ACCURATELY REFLECT ACTUAL CONSTRUCTION CONDITIONS. THE CONTRACTOR SHALL BE RESPONSIBLE FOR COORDINATING THE INSTALLATION OF ALL EQUIPMENT THEY ARE INSTALLING, WITH ALL TRADES PRIOR TO AND DURING CONSTRUCTION.
- VOICE/CATV OUTLET SHALL BE AT THE SAME HEIGHT AS ADJACENT POWER OUTLET AND LESS THAN 6" SEPARATION. COORDINATE WITH ELECTRICAL.
- COORDINATE ALL DEVICE LOCATIONS WITH LATEST ARCHITECTURAL INTERIOR ELEVATIONS TO VERIFY DEVICES WILL NOT BE OBSTRUCTED.
- ALL PENETRATIONS THROUGH FIREWALLS WILL NEED FIRESTOP OF THE APPROPRIATE RATING.
- HORN AND/OR HORN-STROBE DEVICES CONNECT TO BUILDING FIRE ALARM SYSTEM.
- INSTALL STAND-ALONE SMOKE AND CO DETECTORS PER RESIDENTIAL CODE 907.
- 'SMART PANEL' SHALL BE RF TRANSPARENT AND NOT LESS THE 40" IN HEIGHT.

M
F
I
A
INC.
Consulting Engineers
2007 S.E. Ash St.
Portland, OR 97214
PHN: (503) 234-0548
FAX: (503) 234-0677
CONTACT: GARY ADOVNIK

STUDIO
3
ARCHITECTURE
INCORPORATED

275 COURT ST. NE
SALEM, OR 97301-3442
P: 503.390.6500
www.studio3architecture.com



IN THE EVENT CONFLICTS ARE DISCOVERED BETWEEN THE ORIGINAL SIGNED AND SEALED DOCUMENTS PREPARED BY THE ARCHITECTS AND/OR THEIR CONSULTANTS, AND ANY COPY OF THE DOCUMENTS TRANSMITTED BY MAIL, FAX, ELECTRONICALLY OR OTHERWISE, THE ORIGINAL SIGNED AND SEALED DOCUMENTS SHALL GOVERN.

PROJECT # 2017-053
DATE: 10/31/2022

REVISIONS

**AEGIS - PHASE II
MIXED-USE DEVELOPMENT**
312 E EVERGREEN BOULEVARD, VANCOUVER, WA 98660

SHEET:

T4.08