

IN THE EVENT CONFLICTS ARE DISCOVERED  
BETWEEN THE ORIGINAL SIGNED AND SEALED  
DOCUMENTS PREPARED BY THE ARCHITECTS  
AND/OR THEIR CONSULTANTS, AND ANY COPY OF  
THE DOCUMENTS TRANSMITTED BY MAIL, FAX,  
ELECTRONICALLY OR OTHERWISE, THE ORIGINAL  
SIGNED AND SEALED DOCUMENTS SHALL GOVERN.

PROJECT # 2017-053  
DATE: 11/06/2019

REVISIONS  
△ PLAN REVIEW 01.24.2020  
△ PLAN REVIEW 03.13.2020  
△ PLAN REVIEW 04.24.2020  
△ PLAN REVIEW 08.10.2020  
△ PLAN REVIEW 09.17.2020

AEGIS  
MIXED-USE DEVELOPMENT  
312 E EVERGREEN BOULEVARD, VANCOUVER, WA 98660

SHEET:  
T4.16

GENERAL NOTES:

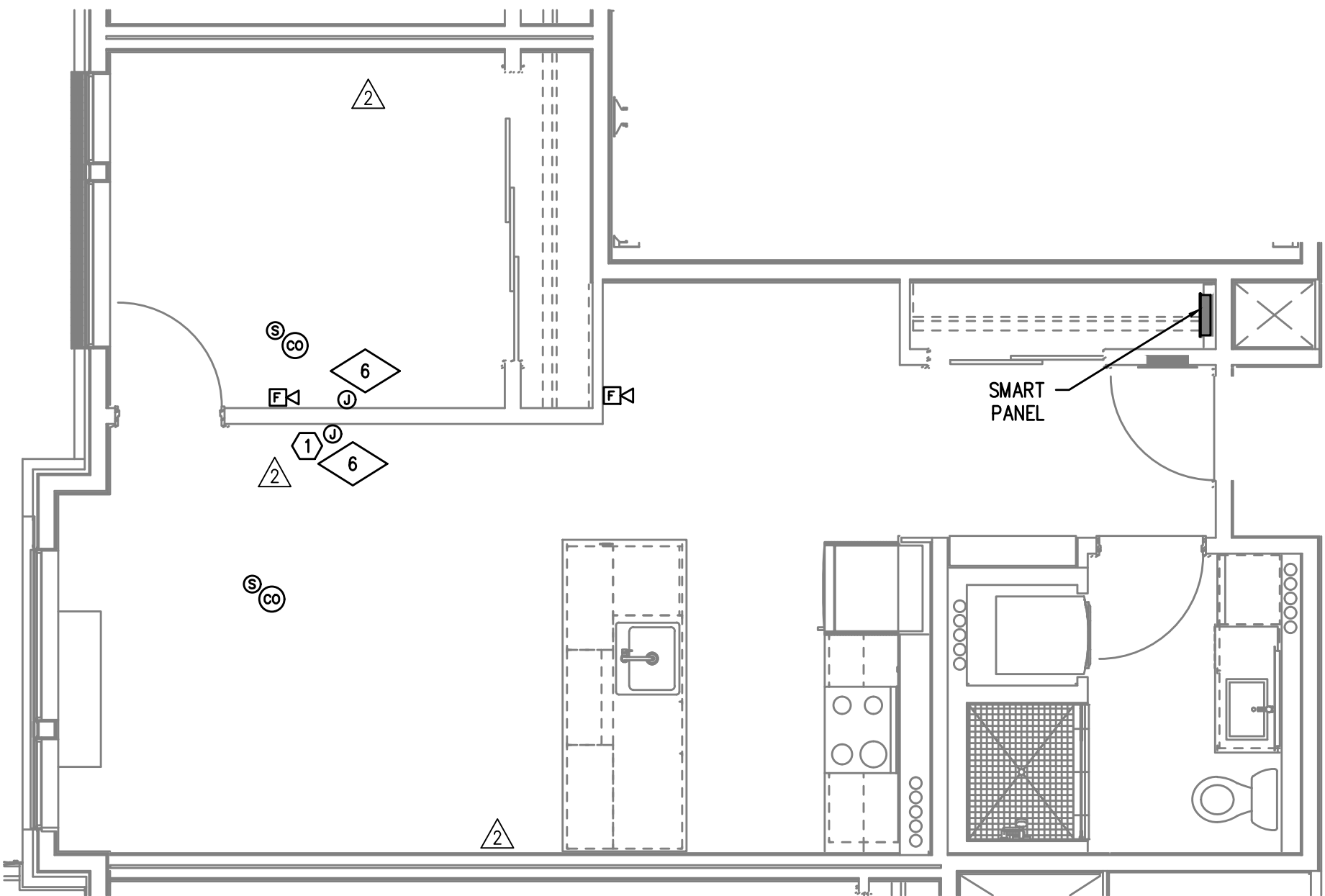
- DRAWINGS ARE DIAGRAMMATICAL AND MAY NOT ACCURATELY REFLECT ACTUAL CONSTRUCTION CONDITIONS. THE CONTRACTOR SHALL BE RESPONSIBLE FOR COORDINATING THE INSTALLATION OF ALL EQUIPMENT THEY ARE INSTALLING, WITH ALL TRADES PRIOR TO AND DURING CONSTRUCTION.
- VOICE/CATV OUTLET SHALL BE AT THE SAME HEIGHT AS ADJACENT POWER OUTLET AND LESS THAN 6" SEPARATION. COORDINATE WITH ELECTRICAL.
- COORDINATE ALL DEVICE LOCATIONS WITH LATEST ARCHITECTURAL INTERIOR ELEVATIONS TO VERIFY DEVICES WILL NOT BE OBSTRUCTED.
- PROVIDE PULL STRING IN ALL CONDUITS FOR LATER USE.
- ALL PENETRATIONS THROUGH FIREWALLS WILL NEED FIRESTOP OF THE APPROPRIATE RATING.
- HORN AND/OR HORN-STROBE DEVICES CONNECT TO BUILDING FIRE ALARM SYSTEM.
- INSTALL STAND-ALONE SMOKE AND CO DETECTORS PER RESIDENTIAL CODE 907.

NOTES:

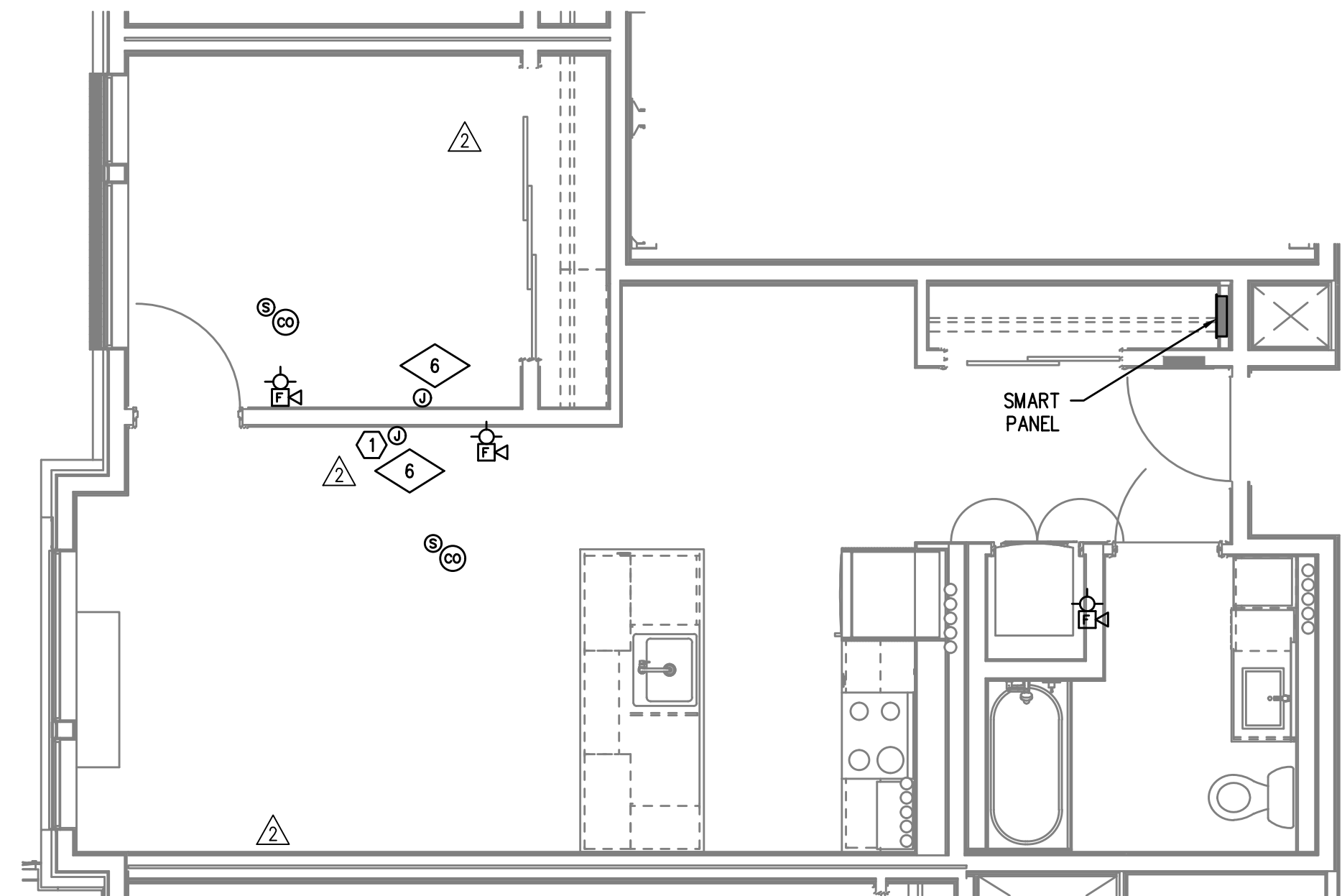
- PROVIDE (3) PORT FACEPLATE AT THIS LOCATION. ROUTE (1) CAT 6 AND (1) RG-6 TO 'SMART PANEL' IN UNIT, ROUTE (1) CAT 6 CABLE TO PHONE ROOM ON SAME FLOOR. TERMINATE WITH 'F' CONNECTOR AND COORDINATE CAT-6 TERMINATION WITH UTILITY. LABEL FACEPLATE PORTS WITH 'CENTURYLINK', 'COMCAST', AND 'FIBERSPHERE'.

FIRE ALARM AND DETECTION SYSTEM SHOWN ON PLAN(S) ARE FOR DESIGN INTENT ONLY. THIS IS A DEFERRED SUBMITTAL SYSTEM REQUIRING THE CONTRACTOR TO COMPLETE THE PERMIT READY DESIGN AND CALCULATIONS AS REQUIRED PER THE AUTHORITY HAVING JURISDICTION. VERIFY BUILDING OCCUPANCY TYPE AND OCCUPANT LOAD WITH ARCHITECTURAL PLANS.

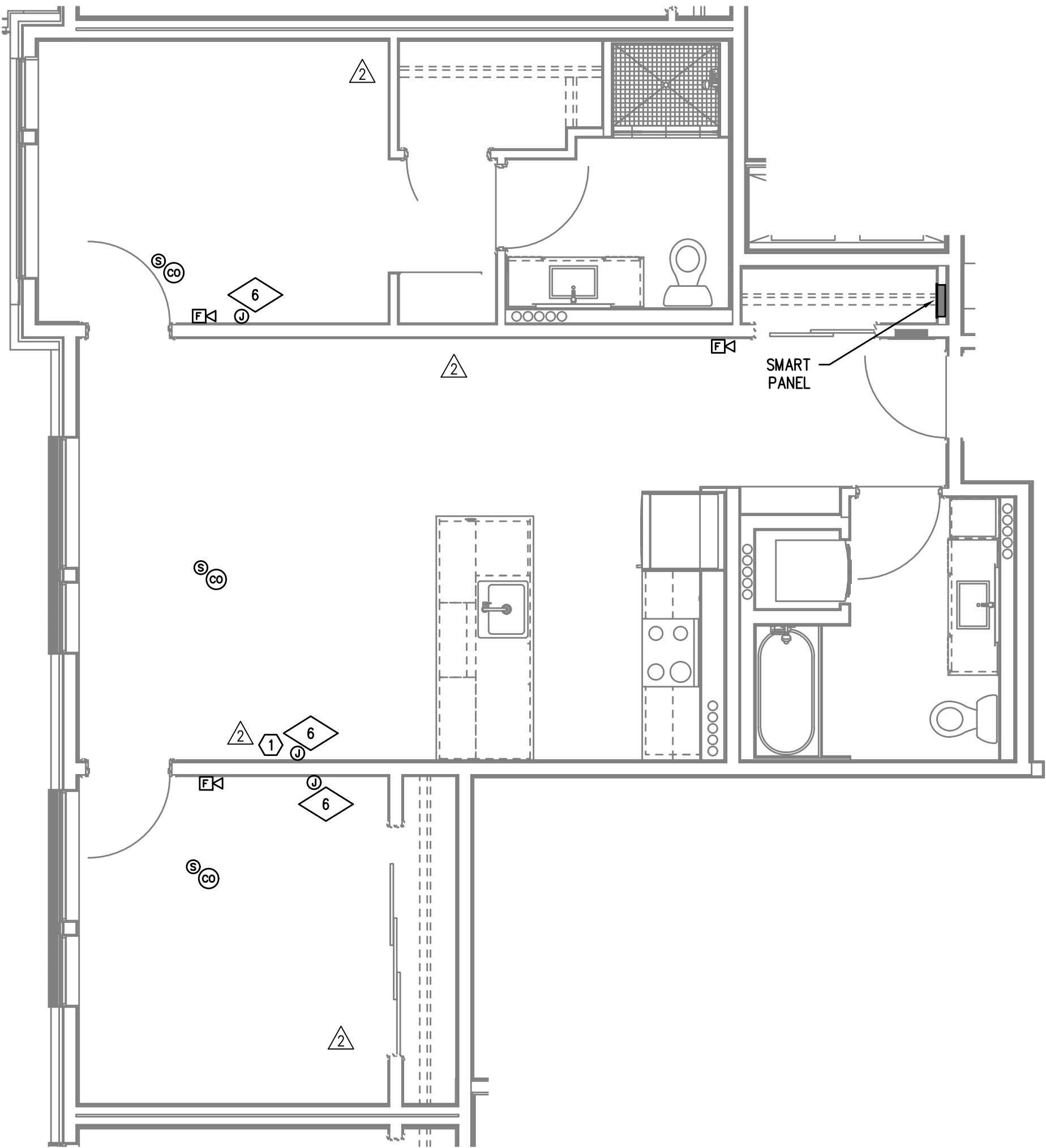
M  
E  
I  
A  
INC. Consulting Engineers  
2007 S.E. Ash St.  
Portland, OR 97214  
PHN: (503) 234-0548  
FAX: (503) 234-0677  
CONTACT: GARY ADOVNIK



1  
T4.16  
TYPICAL UNIT TYPE O  
1 BED/1 BATH - TELCOM PLAN  
SCALE: 1/4" = 1'-0"



2  
T4.16  
TYPICAL UNIT TYPE O-ADA  
1 BED/1 BATH - TELCOM PLAN  
SCALE: 1/4" = 1'-0"



2  
T4.16  
TYPICAL UNIT TYPE P  
2 BED/2 BATH - TELCOM PLAN  
SCALE: 1/4" = 1'-0"