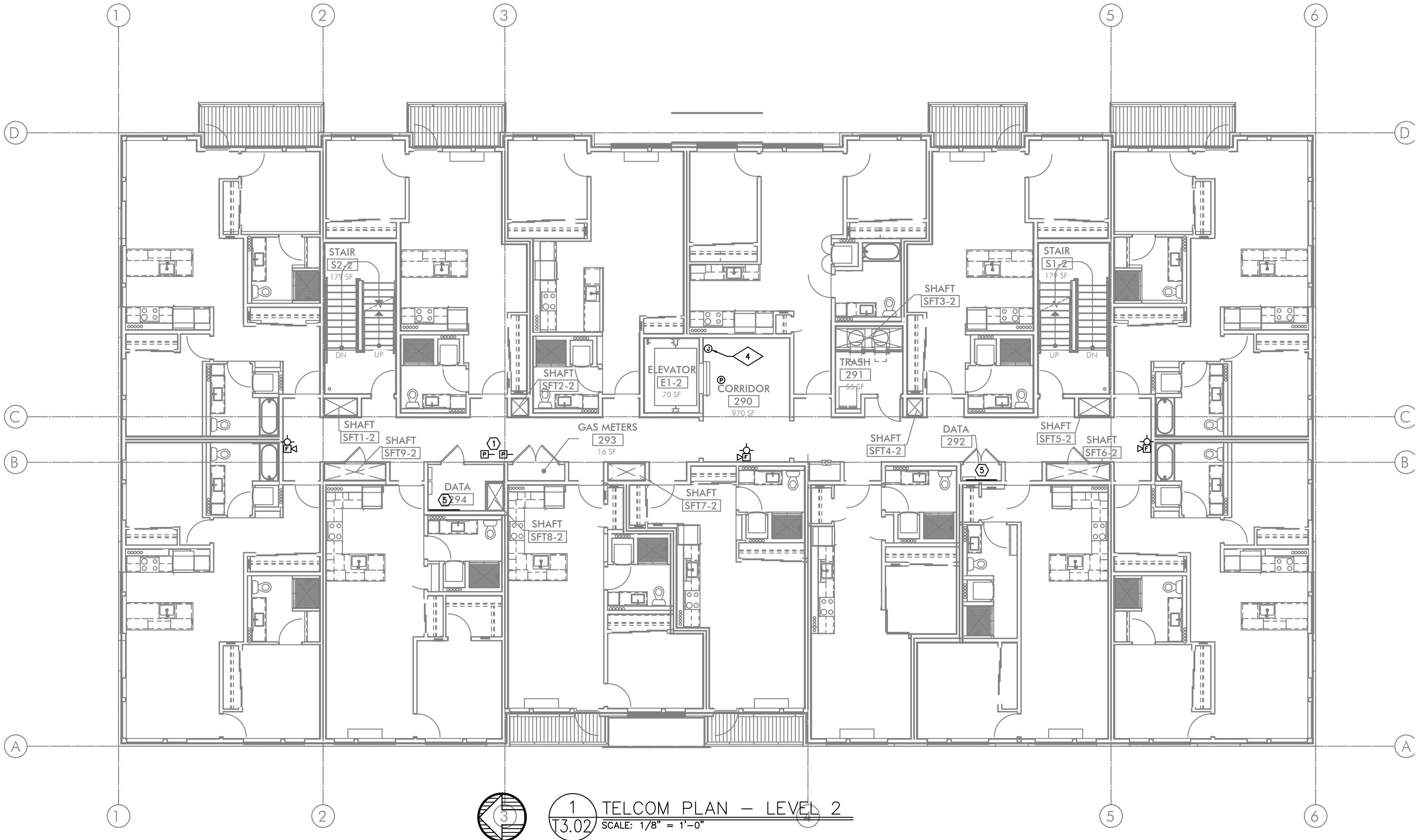


GENERAL NOTES:

- A. DRAWINGS ARE DIAGRAMMATICAL AND MAY NOT ACCURATELY REFLECT ACTUAL CONSTRUCTION CONDITIONS. THE CONTRACTOR SHALL BE RESPONSIBLE FOR COORDINATING THE INSTALLATION OF ALL EQUIPMENT THEY ARE INSTALLING, WITH ALL TRADES PRIOR TO AND DURING CONSTRUCTION.
- B. FOR VOICE/DATA OUTLETS IN COMMERCIAL SPACE, PROVIDE A SINGLE GANG MUD-RING WITH A 1" CONDUIT FROM THE TOP OF THE MUD-RING TO ACCESSIBLE CEILING SPACE. TERMINATE CONDUIT WITH END CONNECTORS AND THREAD ON PLASTIC BUSHING FOR CABLE PROTECTION. OUTLET SHALL BE AT THE SAME HEIGHT AS ADJACENT POWER OUTLET AND LESS THAN 18" SEPARATION. COORDINATE WITH ELECTRICAL.
- C. PROVIDE 3/4" CONDUIT FROM FIRE ALARM, ACCESS CONTROL, SECURITY, AND CCTV LOCATIONS TO ACCESSIBLE CEILING SPACE WITH CABLE PROTECTION AT BOTH ENDS.
- D. COORDINATE ALL DEVICE LOCATIONS WITH LATEST ARCHITECTURAL INTERIOR ELEVATIONS TO VERIFY DEVICES WILL NOT BE OBSTRUCTED.
- E. PROVIDE PULL STRING IN ALL CONDUITS FOR LATER USE.
- F. ALL PENETRATIONS THROUGH FIREWALLS WILL NEED FIRESTOP OF THE APPROPRIATE RATING.
- G. DO NOT SURFACE MOUNT ANY CONDUIT OR FIXTURE WITHOUT PRIOR APPROVAL FROM ARCHITECT, IN ANY PUBLICLY ACCESSIBLE SPACE.

NOTES:

1. VERIFY THE EXACT LOCATION OF FIRE-SMOKE AND SMOKE DAMPERS WITH MECHANICAL PLANS.
2. PROVIDE SMART PANEL WITH (2) 1" CONDUITS TO ACCESSIBLE CEILING SPACE FOR UTILITY CABLING TO DEMARCATION POINT.
3. VERIFY NUMBER OF DEVICES NECESSARY WITH FIRE SPRINKLER PLANS.
4. PROVIDE FIRE SPRINKLER BELL OR WEATHER PROOF HORN-STROBE PER REQUIREMENTS SET BY THE AUTHORITY HAVING JURISDICTION.
5. PROVIDE 3/4" 4'x8' FIRE RATED PLYWOOD BACKBOARD PER UTILITY REQUIREMENTS FOR DEMARCATION POINT.
6. STUB OUT 3/4" CONDUIT FOR CABLING ACCESS TO FUTURE CANOPY.
7. SPACE RESERVED FOR NETWORK, ACCESS CONTROL, CCTV HEAD-END EQUIPMENT AND FUTURE 'DAS' EQUIPMENT.
8. PROVIDE BACK BOX AND 3/4" CONDUIT TO ACCESSIBLE CEILING SPACE WITH CATEGORY 6 CABLING ACCESS TO PACKAGE DELIVERY SYSTEM.
9. SPACE RESERVED FOR AV SYSTEM. SYSTEM DESIGN BY OTHERS.



1 TELCOM PLAN - LEVEL 2
3.02 SCALE: 1/8" = 1'-0"

FIRE ALARM AND DETECTION SYSTEM SHOWN ON PLAN(S) ARE FOR DESIGN INTENT ONLY. THIS IS A DEFERRED SUBMITTAL SYSTEM REQUIRING THE CONTRACTOR TO COMPLETE THE PERMIT READY DESIGN AND CALCULATIONS AS REQUIRED PER THE AUTHORITY HAVING JURISDICTION. VERIFY BUILDING OCCUPANCY TYPE AND OCCUPANT LOAD WITH ARCHITECTURAL PLANS.