

PRELIMINARY
NOT FOR
CONSTRUCTION

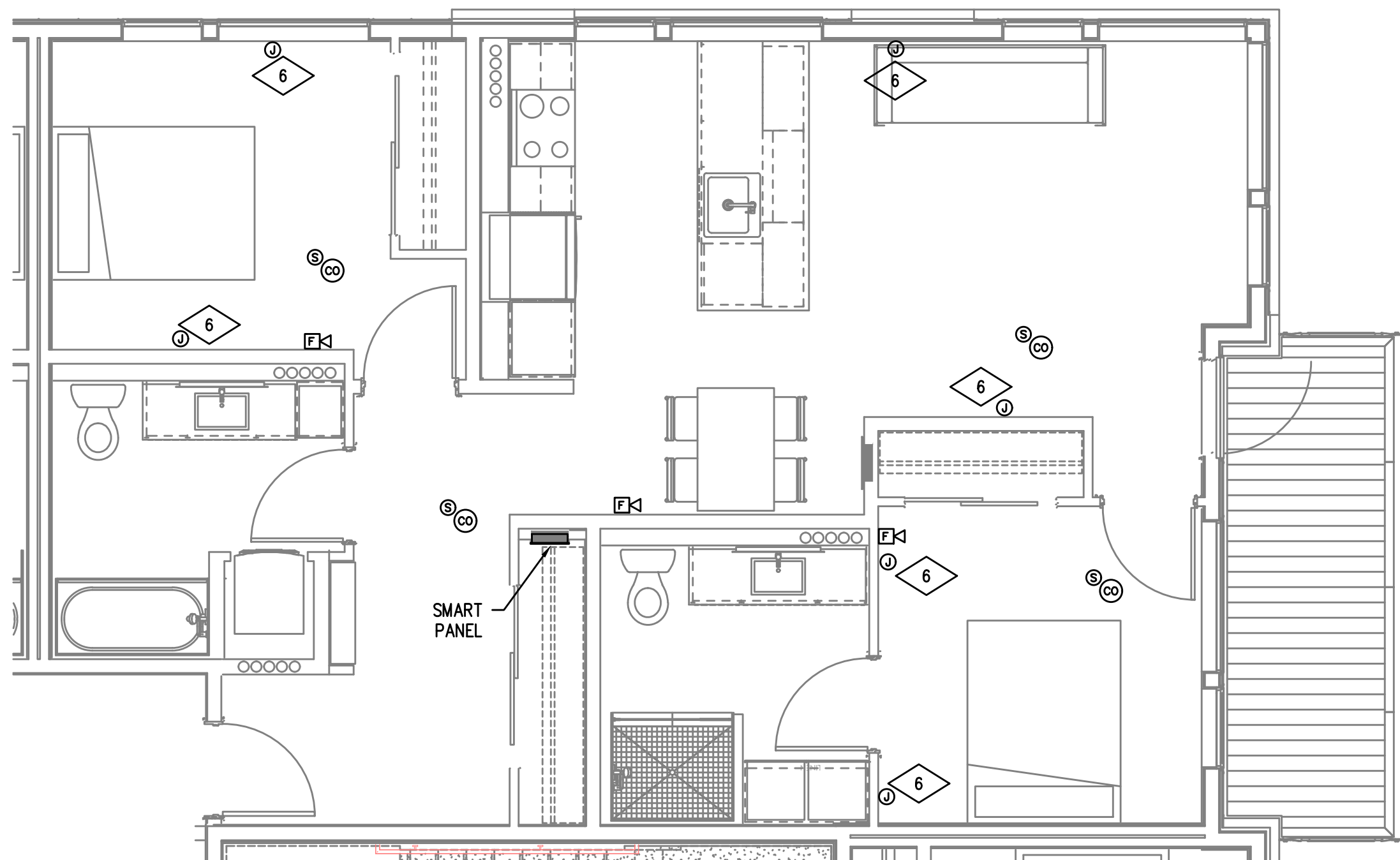
IN THE EVENT CONFLICTS ARE DISCOVERED
BETWEEN THE ORIGINAL SIGNED AND SEALED
DOCUMENTS PREPARED BY THE ARCHITECTS
AND/OR THEIR CONSULTANTS, AND ANY COPY OF
THE DOCUMENTS TRANSMITTED BY MAIL, FAX,
ELECTRONICALLY OR OTHERWISE, THE ORIGINAL
SIGNED AND SEALED DOCUMENTS SHALL GOVERN.

PROJECT # 2017-053
DATE: 07/12/2019

REVISIONS

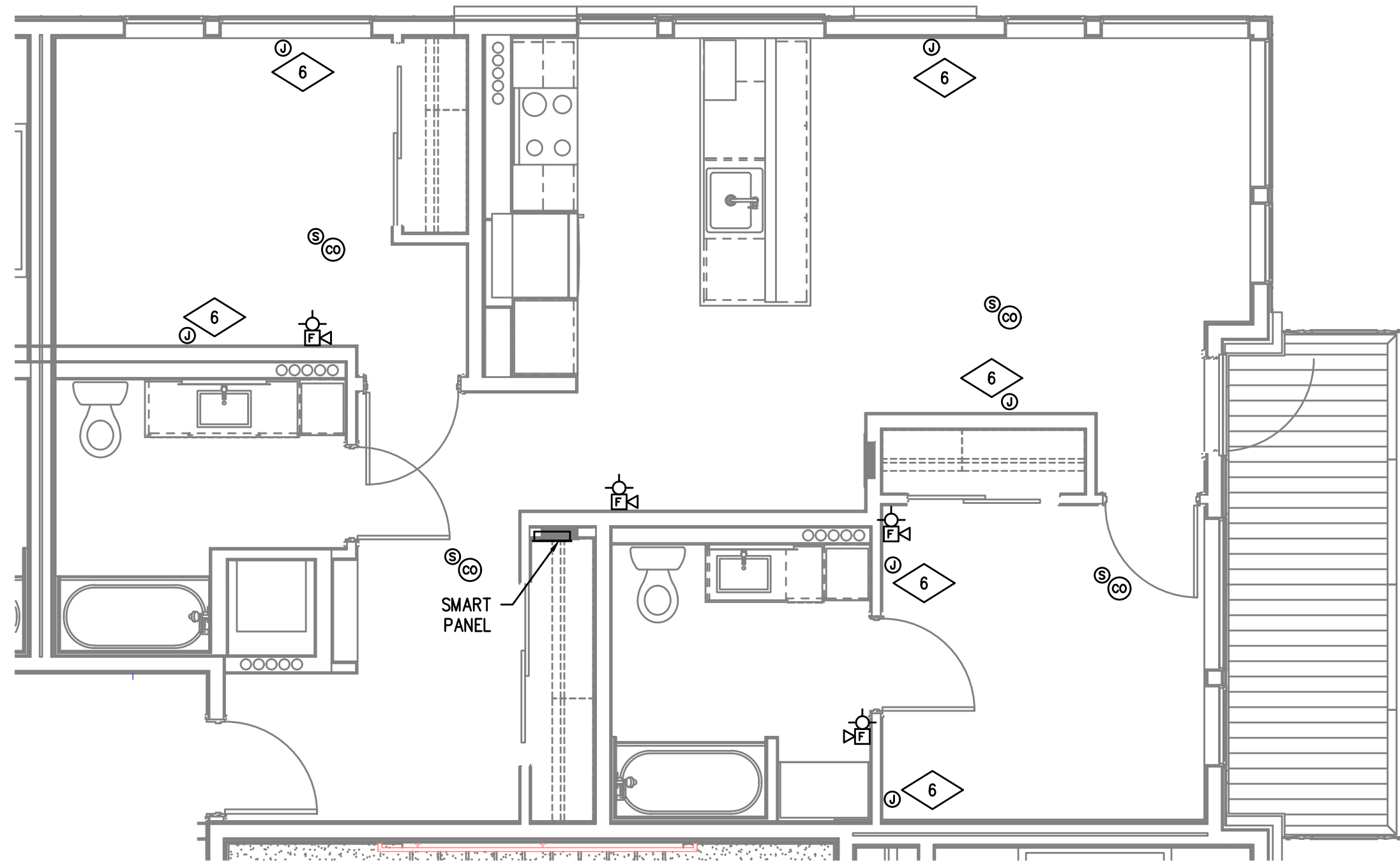
GENERAL NOTES:

- A. DRAWINGS ARE DIAGRAMMATICAL AND MAY NOT ACCURATELY REFLECT ACTUAL CONSTRUCTION CONDITIONS. THE CONTRACTOR SHALL BE RESPONSIBLE FOR COORDINATING THE INSTALLATION OF ALL EQUIPMENT THEY ARE INSTALLING, WITH ALL TRADES PRIOR TO AND DURING CONSTRUCTION.
- B. VOICE/CATV OUTLET SHALL BE AT THE SAME HEIGHT AS ADJACENT POWER OUTLET AND LESS THAN 18" SEPARATION. COORDINATE WITH ELECTRICAL.
- C. COORDINATE ALL DEVICE LOCATIONS WITH LATEST ARCHITECTURAL INTERIOR ELEVATIONS TO VERIFY DEVICES WILL NOT BE OBSTRUCTED.
- D. PROVIDE PULL STRING IN ALL CONDUITS FOR LATER USE.
- E. ALL PENETRATIONS THROUGH FIREWALLS WILL NEED FIRESTOP OF THE APPROPRIATE RATING.



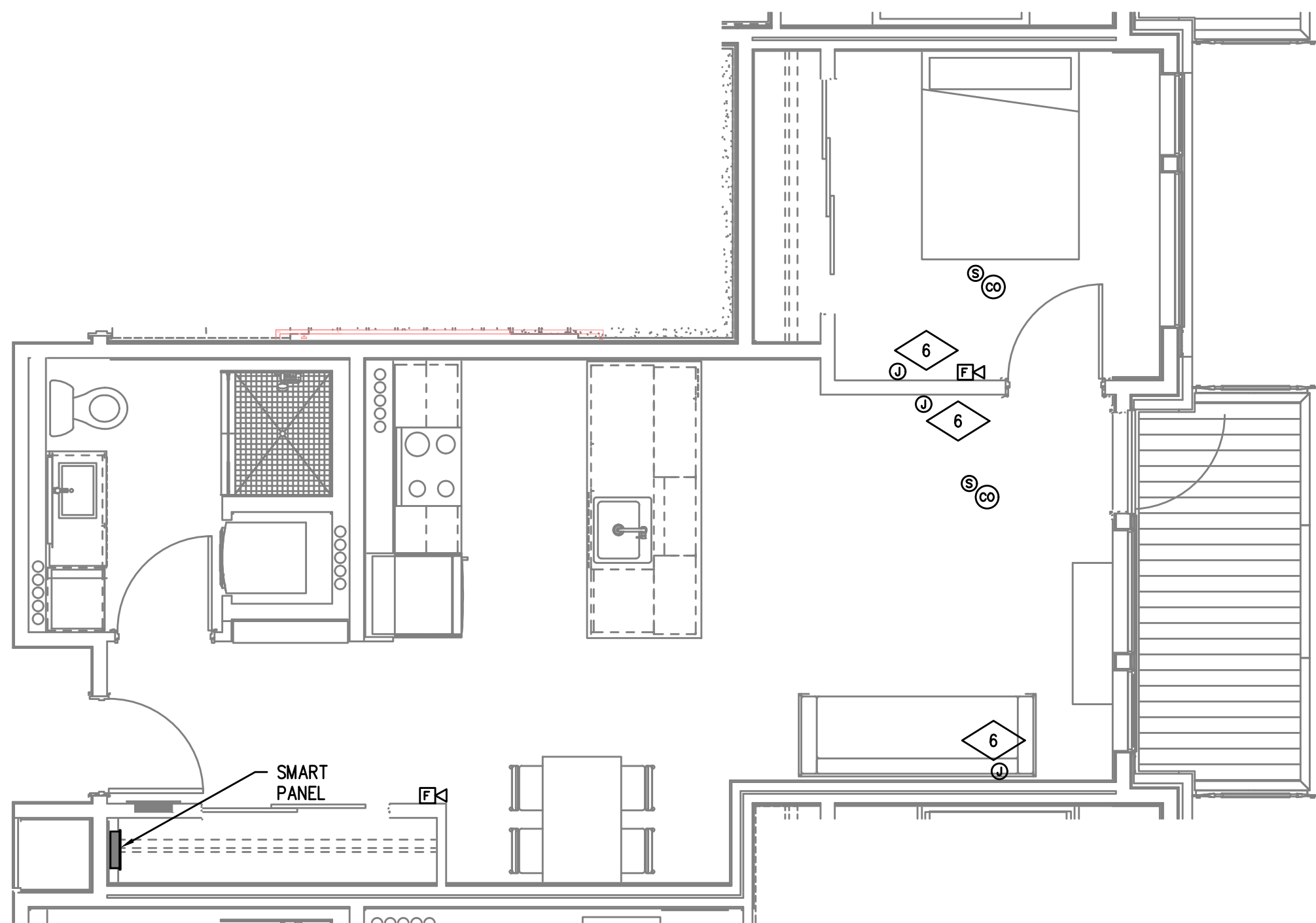
TYPICAL UNIT TYPE A

1 2 BED/2 BATH – TELCOM PLAN
T4.11 SCALE: 1/4" = 1'-0"



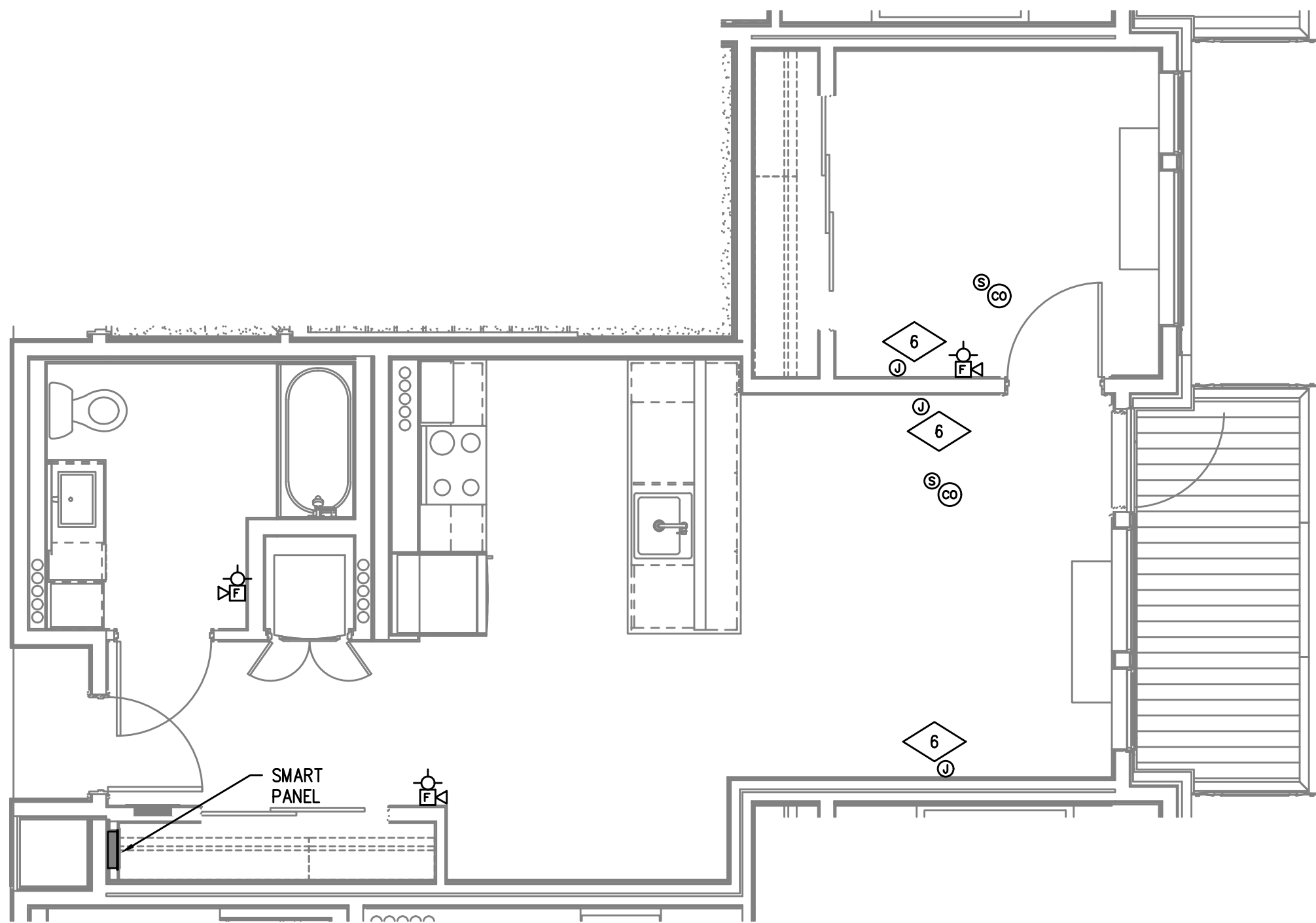
TYPICAL UNIT TYPE A-ADA

2 2 BED/2 BATH – TELCOM PLAN
T4.11 SCALE: 1/4" = 1'-0"



TYPICAL UNIT TYPE B

3 1 BED/1 BATH – TELCOM PLAN
T4.11 SCALE: 1/4" = 1'-0"



TYPICAL UNIT TYPE B-ADA

4 1 BED/1 BATH – TELCOM PLAN
T4.11 SCALE: 1/4" = 1'-0"

M
E
I
A
INC. Consulting Engineers
2007 S.E. Ash St.
Portland, OR 97214
PHN: (503) 234-0548
FAX: (503) 234-0677
CONTACT: GARY ADOVNIK

SHEET:

T4.11