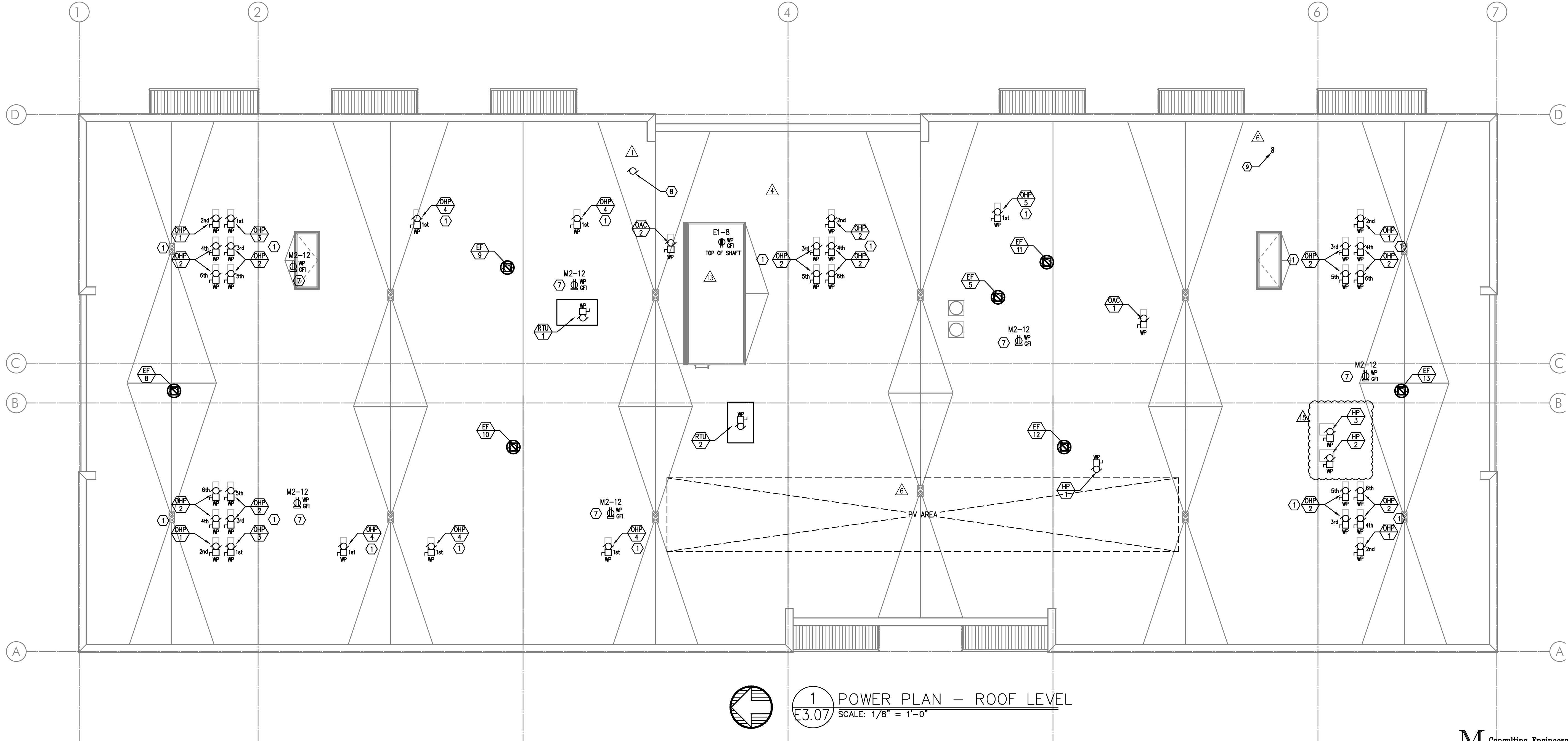


GENERAL POWER NOTES:

- A. ALL PLANS ARE CONSIDERED DIAGRAMMATICAL. THEREFORE ALL EQUIPMENT SIZES AND DEVICE LOCATIONS ARE APPROXIMATE AND SUBJECT TO FIELD CONDITIONS AND PRODUCT APPROVAL.
- B. COORDINATE WITH MECHANICAL INSTALLER FOR EXACT POWER REQUIREMENTS AND LOCATIONS PRIOR TO ROUGH IN AND THROUGHOUT CONSTRUCTION.
- C. THERE SHALL BE NO SURFACE MOUNTED FIXTURES OR PATHWAYS (CONDUIT, ETC.) IN ANY PUBLICLY ACCESSIBLE SPACES, INCLUDING STAIRWELLS AND EXIT PASSAGEWAYS WITHOUT PRIOR APPROVAL BY OWNER AND ARCHITECT. ROUTE ALL PATHWAYS WITHIN STUD CAVITIES OR ABOVE FINISHED CEILINGS.
- △ D. "SOLAR READY" WORK FOR FUTURE PHOTOVOLTAIC ARRAY SHALL BE PER THE ELECTRICAL REQUIREMENTS AS DEFINED BY THE WASHINGTON STATE ADMINISTRATION CODE, TITLE 51, CHAPTER 51, SECTION 60106.

KEYED NOTES:

1. HEAT PUMP UNITS TO BE INTERCONNECTED WITH A CORRESPONDING APARTMENT FAN COIL UNIT. REFER TO TYPICAL UNIT PANEL SCHEDULES ON E1.17 FOR CIRCUITING INFO. COORDINATE WITH THE MECHANICAL EQUIPMENT INSTALLER FOR EXACT POWER REQUIREMENTS AND LOCATIONS PRIOR TO ROUGH IN. FOR ADDITIONAL INFORMATION, CONSULT THE MECHANICAL PLAN SHEETS.
2. ELECTRICAL CONTRACTOR TO COORDINATE WITH LANDSCAPE PROVIDER FOR EXACT LOCATION OF POWER CONNECTIONS TO LOW VOLTAGE LIGHTING. LANDSCAPE LIGHTING SHALL BE CIRCUITED VIA CIRCUIT H2-21.
3. ELECTRICAL CONTRACTOR TO COORDINATE WITH LANDSCAPE PROVIDER FOR EXACT LOCATION OF POWER CONNECTIONS AS REQUIRED FOR LANDSCAPE IRRIGATION AND SHALL BE CIRCUITED VIA CIRCUIT H2-19.
4. PROVIDE ONE 20A, 120V, 1P CIRCUIT FOR GAS FIREPLACE. CONSULT WITH MECHANICAL CONTRACTOR FOR EXACT WIRING REQUIREMENTS PRIOR TO ROUGH IN. CONSULT INTERIOR DECORATOR FOR EXACT LOCATION OF CONTROL SWITCH(ES) IF REQUIRED.
5. PROVIDE 120V TWIST TIMER SWITCH (MAX. 60 MINUTES, "NO HOLD") IN WEATHER PROOF BOX FOR GAS GRILL AND FIRE PIT IGNITER CONTROLS. CIRCUIT FROM PANEL 'H2'. SEE DETAIL 5/E1.22 FOR EMERGENCY SHUFF-OFF DIAGRAM.
6. PROVIDE EMERGENCY SHUTOFF CONTROLS FOR GAS APPLIANCES LOCATED ON TERRACE. COORDINATE INSTALLATION WITH MECHANICAL CONTRACTOR. CIRCUIT FROM PANEL 'H2'. SEE DETAIL 5/E1.22 FOR EMERGENCY SHUFF-OFF DIAGRAM. PROVIDE WEATHER PROOF LABEL EACH BUTTON WITH DEVICE IT CONTROLS.
7. LOCATE WEATHERPROOF GFCI RECEPTACLES WITHIN 25'-0" OF ALL MECHANICAL EQUIPMENT AS REQUIRED BY CODE. MOUNT AT CURBS WHEREVER POSSIBLE. CIRCUIT AS INDICATED.
- △ 8. CONSULT ARCHITECT AND/OR MECHANICAL PLANS FOR ADDITIONAL INFORMATION REGARDING THE FIREPLACE VENT FAN ON ROOF. PROVIDE ELECTRICAL CONNECTION INTERCONNECT WITH FIREPLACE LOCATED AT THE FIRST FLOOR LOBBY.
- △ 9. CONDUIT STUB-UPS FOR PV SOLAR SYSTEM PROVIDED AND INSTALLED BY OTHERS. REFER TO ONE-LINE DIAGRAM FOR ADDITIONAL INFORMATION AND COORDINATE WITH SYSTEM INSTALLER FOR EXACT LOCATION. COORDINATE WITH THE STRUCTURAL ENGINEER FOR THE ROUTING OF THE CONDUITS UP THROUGH THE BUILDING PRIOR TO ANY WORK.



EXPIRES: July 6th, 2020

IN THE EVENT CONFLICTS ARE DISCOVERED BETWEEN THE ORIGINAL SIGNED AND SEALED DOCUMENTS PREPARED BY THE ARCHITECTS AND/OR THEIR CONSULTANTS, AND ANY COPY OF THE DOCUMENTS TRANSMITTED BY MAIL, FAX, ELECTRONICALLY OR OTHERWISE, THE ORIGINAL SIGNED AND SEALED DOCUMENTS SHALL GOVERN.

- PROJECT # 2017-053  
DATE: 11/06/2019  
REVISIONS  
△ PLAN REVIEW 01.24.2020  
△ PLAN REVIEW 03.13.2020  
△ PLAN REVIEW 04.24.2020  
△ PLAN REVIEW 08.10.2020  
△ PLAN REVIEW 09.17.2020  
△ PLAN REVIEW 10.16.2020  
△ PLAN REVIEW 11.25.2020  
△ PLAN REVIEW 03.26.2021  
△ PLAN REVIEW 07.15.2021  
△ COORDINATION 08.27.2021  
△ COORDINATION 11.05.2021  
△ COORDINATION 12.10.2021  
△ FITNESS EXP. 03.03.2022

**AEGIS**  
**MIXED-USE DEVELOPMENT**  
312 E EVERGREEN BOULEVARD, VANCOUVER, WA 98660

SHEET:  
**B**  
**E3.07**

**M**  
**F**  
**A**  
**INC.**  
Consulting Engineers  
2007 S.E. Ash St.  
Portland, OR 97214  
PHN: (503) 234-0548  
FAX: (503) 234-0677  
CONTACT: DENISE TAYLOR