

## GENERAL POWER NOTES:

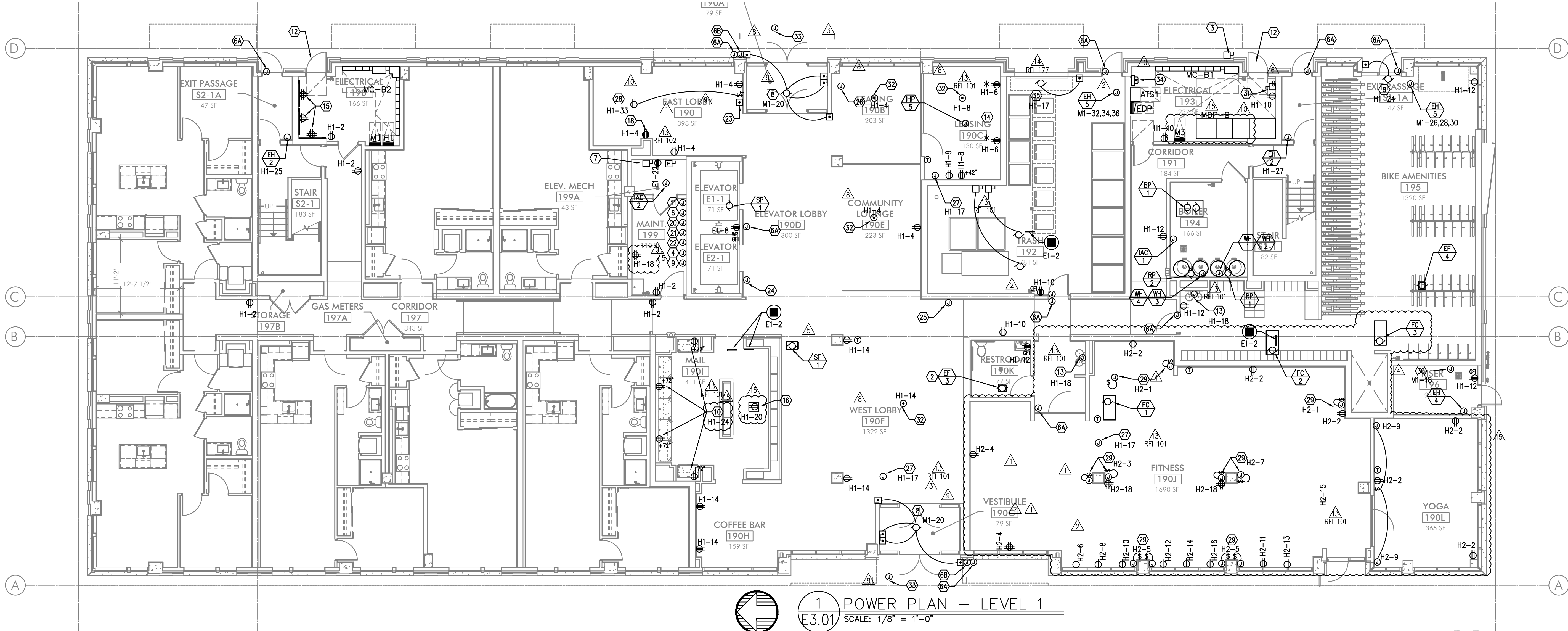
- ALL PLANS ARE CONSIDERED DIAGRAMMATICAL. THEREFORE ALL EQUIPMENT SIZES AND DEVICE LOCATIONS ARE APPROXIMATE AND SUBJECT TO FIELD CONDITIONS AND PRODUCT APPROVAL.
- ELECTRICAL CONTRACTOR TO PROVIDE THERMOSTATS NOT SUPPLIED BY MECHANICAL CONTRACTOR. CONSULT MECHANICAL PLANS FOR ADDITIONAL INFORMATION.
- ELECTRICAL CONTRACTOR SHALL PROVIDE INSTALLATION AND FINAL CONNECTION OF THERMOSTATS. CONSULT MECHANICAL CONTRACTOR FOR EXACT REQUIREMENTS PRIOR TO ROUGH IN.
- REFER TO INTERIOR DECORATOR AND/OR ARCHITECTURAL DRAWINGS FOR DIMENSIONED LOCATION(S) AND ELEVATIONS OF FIXTURES & DEVICES. OTHER DEVICES SHOWN ON THE ELECTRICAL PLANS AND NOT INDICATED ON THE DECORATOR'S OR ARCHITECT'S DRAWINGS, SHALL BE INSTALLED AT STANDARD MOUNTING HEIGHT AS INDICATED THE SYMBOL LIST.
- REFER TO ENLARGED TYPICAL UNIT PLANS (E4 SERIES SHEETS) FOR TYPICAL POWER & LIGHTING LAYOUTS FOR THE APARTMENT UNITS.
- ELECTRICAL EQUIPMENT SHOWN IN THE ELECTRICAL ROOMS IS APPROXIMATE, BASED ON TYPICAL PRODUCTS. CONTRACTOR SHALL VERIFY ANY SUBMITTED EQUIPMENT WILL FIT WITHIN THE SPACE PROVIDED, PRIOR TO PRODUCT SUBMITTAL REVIEW.
- CONSULT ARCHITECTURAL AND/OR INTERIOR DECORATOR PLANS FOR EXACT RECEPTACLE LOCATION IN THE COMMUNITY AREAS, SUCH AS THE LOBBY, CLUB ROOM, LEASE OFFICE, ETC.
- THERE SHALL BE NO SURFACE MOUNTED FIXTURES OR PATHWAYS (CONDUIT, ETC.) IN ANY PUBLICLY ACCESSIBLE SPACES, INCLUDING STAIRWELLS AND EXIT PASSAGEWAYS WITHOUT PRIOR APPROVAL BY OWNER AND ARCHITECT. ROUTE ALL PATHWAYS WITHIN STUD CAVITIES OR ABOVE FINISHED CEILINGS.
- "SOLAR READY" WORK FOR FUTURE PHOTOVOLTAIC ARRAY SHALL BE PER THE ELECTRICAL REQUIREMENTS AS DEFINED BY THE WASHINGTON STATE ADMINISTRATION CODE, TITLE 51, CHAPTER 51, SECTION 60106.

## KEYED NOTES:

- NOT USED.
- EXHAUST FAN TO BE TIED INTO LIGHTING CIRCUIT FOR THIS AREA.
- GENERATOR DISCONNECT. SEE ONE-LINE DIAGRAM ON SHEET E1.11.
- PROVIDE ONE 20A, 120V, 1P CIRCUIT FOR GENERATOR REMOTE ANNUNCIATOR. FED FROM PANEL E1, CKT 27.
- NOT USED.
- PROVIDE ONE 20A, 120V, 1P CIRCUIT FROM PANEL M1, CKT 24 FOR BUILDING ENTRY ACCESS CONTROL SYSTEM AND PROVIDE ROUGH IN AND WIRING TO ACCESS POINTS LOCATED ON PLANS. CONSULT WITH LOW VOLTAGE SYSTEMS INSTALLER AND THE 'T' SERIES SHEETS FOR ADDITIONAL INFORMATION.
- ENTRY ACCESS POINT.
- APARTMENT CALL DIRECTORY.
- VERIFY ELEVATOR EQUIPMENT LOCATION AND ELECTRICAL REQUIREMENTS WITH ARCHITECT AND/OR ELEVATOR PROVIDER.
- PROVIDE ONE 20A, 120V, 1P CIRCUIT FROM PANEL 'M1' FOR AUTOMATIC DOOR OPENERS.
- PROVIDE ONE 20A, 120V, 1P CIRCUIT FROM PANEL 'H1' FOR DAS SYSTEM.
- PACKAGE CONCIERGE SYSTEM. MOUNT DUPLEX RECEPTACLES AT 76" AFF.
- PROVIDE ONE 20A, 120V, 1P CIRCUIT FOR A/V SYSTEM CONTROL, FROM PANEL H1, CKT 31. CONSULT INTERIORS GROUP FOR EXACT LOCATION. COORDINATE WITH SYSTEM INSTALLER FOR EXACT REQUIREMENTS.

- ELECTRICAL SERVICE METER ROOMS SHALL HAVE OUTWARD SWING DOORS EQUIPPED WITH PANIC HARDWARE. PROVIDE A KEY BOX AT THE EXTERIOR FOR CLARK PUBLIC UTILITIES 24/7 ACCESS.
- CONSULT MECHANICAL AND/OR PLUMBING CONTRACTOR FOR EXACT ELECTRICAL REQUIREMENTS OF THE DRINKING FOUNTAIN, IF ANY AND PROVIDE CIRCUIT FROM PANE H1.
- PER WASHINGTON STATE ENERGY CODE C405.10, AT LEAST 50% OF THE RECEPTACLES IN THIS SPACE SHALL BE CONTROLLED. RECEPTACLES NOTED WITH '\*' SHALL BE CONTROLLED VIA OCCUPANCY SENSOR AND SHALL "TURN OFF" AFTER A MINIMUM OF 30 MINUTES OF IN-ACTIVITY WITHIN THE SPACE. PROVIDE APPROPRIATE IDENTIFICATION OF EACH CONTROLLED RECEPTACLE. REFER TO THE PANEL SCHEDULES ON E1.16 FOR ADDITIONAL INFORMATION ON WHICH CIRCUIT IS TO BE THE CONTROLLED CIRCUIT.
- LOW VOLTAGE/COMMUNICATIONS SYSTEM DEMARCATION BOARD(S). COORDINATE LOCATIONS AND ELECTRICAL POWER REQUIREMENTS WITH THE TELECOM PLANS ('T' SERIES SHEETS) AND LOW VOLTAGE SYSTEMS INSTALLERS, AND PROVIDE ROUGH IN AND/OR FINAL ELECTRICAL POWER CONNECTIONS & DEVICES. REFER PANEL 'M1' SCHEDULE ON E1.16 FOR CIRCUITS.
- CEILING MOUNTED 20A DUPLEX RECEPTACLE FOR SECURITY CAMERA. CONSULT ARCHITECT FOR ADDITIONAL INFORMATION.
- SHAFT FOR THE ROUTING OF ELECTRICAL FEEDERS FROM TENANT METERS TO RESIDENTIAL UNITS.
- HORIZONTAL RECEPTACLE IN BANQUETTE FACE. REFER TO THE ARCHITECT AND INTERIOR DECORATOR PLANS FOR ADDITIONAL INFORMATION. PROVIDE WITH TYPES A & C USB PORTS, LEVITON T5633-T OR APPROVED EQUAL.
- PROVIDE ONE 20A, 120V, 1P CIRCUIT FROM THE EMERGENCY PANEL E1, CKTS 19 & 21 FOR ELEVATOR SMOKE CURTAINS. SMOKE CURTAINS ARE TO BE SMOKE GUARD SYSTEM MODEL 200 AND SHALL BE INSTALLED AT EACH ELEVATOR LOBBY. ELECTRICAL CONTRACTOR SHALL BE RESPONSIBLE TO COORDINATE INSTALLATION WITH THE EQUIPMENT PROVIDER/INSTALLER FOR ALL ELECTRICAL REQUIREMENTS PRIOR TO ROUGH IN. EACH SMOKE CURTAIN SHALL BE INTERLINKED WITH THE NEAREST SMOKE DETECTOR AT EACH LOCATION.
- PROVIDE ONE 20A, 120V, 1P CIRCUIT FROM PANEL H1, CKT 17 FOR THE APARTMENT ENTRY SYSTEM PRIMARY CONTROL PANEL AND PROVIDE ROUGH IN AND WIRING, AS NEEDED, TO EACH UNIT ENTRY. CONSULT WITH LOW VOLTAGE SYSTEMS INSTALLER AND THE 'T' SERIES SHEETS FOR ADDITIONAL INFORMATION.
- PROVIDE ONE 20A, 120V, 1P CIRCUIT FROM PANEL H1, CKT 34 FOR THE SECURITY SYSTEM PANEL AND PROVIDE ROUGH IN AND WIRING, AS NEEDED. CONSULT WITH LOW VOLTAGE SYSTEMS INSTALLER AND THE 'T' SERIES SHEETS FOR ADDITIONAL INFORMATION.
- PROVIDE ONE 20A, 120V, 1P CIRCUIT FROM PANEL E1, CKT 23 FOR THE FIRE ALARM CONTROL PANEL. CONSULT WITH LOW VOLTAGE SYSTEMS INSTALLER AND THE 'T' SERIES SHEETS FOR ADDITIONAL INFORMATION.
- PROVIDE EMERGENCY SHUTOFF CONTROLS FOR GAS APPLIANCES. COORDINATE INSTALLATION WITH MECHANICAL CONTRACTOR. CIRCUIT FROM PANEL 'E1'. SEE DETAIL 5/E1.22 FOR EMERGENCY SHUT-OFF DIAGRAM.
- AREA OF REFUGE PANEL. CONSULT FIRE ALARM PLANS ('T' SERIES SHEETS) AND PROVIDE ROUGH IN AS NEEDED. PROVIDE POWER CONNECTION FROM PANEL E1.
- PROVIDE ROUGH IN, AS NEEDED, FOR FIRE ALARM REMOTE ANNUNCIATION PANEL.
- PROVIDE ROUGH IN, AS NEEDED, FOR AUDIO SYSTEM CONTROLS.

- PROVIDE ROUGH IN, AS NEEDED, FOR WIFI SYSTEM. CIRCUIT FROM PANEL 'H1'.
- CONSULT ARCHITECT AND/OR MECHANICAL PLANS FOR ADDITIONAL INFORMATION REGARDING THE FIREPLACE. PROVIDE ELECTRICAL CONNECTION(S) AS NEEDED FROM PANEL 'H1', CKT 33. PROVIDE 120V TWIST-TIMER SWITCH (MAX. 60 MINUTES "NO HOLD") FOR FIREPLACE IGNITOR CONTROLS. INTERCONNECT WITH POWER VENT FAN LOCATED ON ROOF.
- PROVIDE TWO 20A, 120V CIRCUITS, FROM PANEL 'H1' FOR WALL MOUNTED FANS, PROVIDED BY OTHERS. CONSULT INTERIOR DECORATOR FOR EXACT POWER REQUIREMENTS AND MOUNTING HEIGHTS. PROVIDE CONTROL SWITCH PER MANUFACTURER'S/DECORATOR'S DIRECTION.
- PROVIDE ONE 20A, 120V CIRCUIT, FROM PANEL 'M1' FOR IRRIGATION CONTROLS. COORDINATE WITH LANDSCAPING FOR EXACT POWER REQUIREMENTS AND PREFERRED LOCATION PRIOR TO ROUGH IN.
- PROVIDE TWO 1-1/2" EMPTY CONDUITS W/ PULL STRING, ROUTED FROM THE ELECTRICAL ROOM TO THE ROOF FOR PV SOLAR SYSTEM PROVIDED AND INSTALLED BY OTHERS. COORDINATE WITH THE STRUCTURAL ENGINEER FOR THE ROUTING OF THE CONDUITS UP THROUGH THE BUILDING PRIOR TO ANY WORK.
- CONSULT INTERIORS PLANS TO VERIFY EXACT LOCATION OF FLOOR BOX DEVICES PRIOR TO ROUGH IN.
- PROVIDE ONE 20A, 120V, 1P CIRCUIT FROM PANEL H1, CKT 16 TO J-BOX BEHIND FACE OF CANOPY FOR BUILDING SIGNAGE BY OTHERS. REFER TO ARCHITECTURAL PLANS FOR EXACT LOCATION. SIGNS TO BE CONTROLLED VIA PHOTOCELL, ALONG WITH BUILDING LIGHTS.
- METER LOCATION FOR PV SYSTEM. VERIFY AND COORDINATE WITH SYSTEM INSTALLER.
- PROVIDE ONE 20A, 120V, 1P CIRCUIT FROM PANEL H1, CKT 17 FOR OVERHEAD DOOR OPENER.



STUDIO

3  
ARCHITECTURE  
INCORPORATED

275 COURT ST. NE  
SALEM, OR 97301-3442  
P: 503.390.6500  
www.studio3architecture.com



EXPIRES: July 6th, 2020

IN THE EVENT CONFLICTS ARE DISCOVERED BETWEEN THE ORIGINAL SIGNED AND SEALED DOCUMENTS PREPARED BY THE ARCHITECTS AND/OR THEIR CONSULTANTS, AND ANY COPY OF THE DOCUMENTS TRANSMITTED BY MAIL, FAX, ELECTRONICALLY OR OTHERWISE, THE ORIGINAL SIGNED AND SEALED DOCUMENT SHALL GOVERN.

PROJECT # 2017-053  
DATE: 11/06/2019  
REVISIONS

- PLAN REVIEW 01.24.2020
- PLAN REVIEW 03.13.2020
- PLAN REVIEW 04.24.2020
- PLAN REVIEW 08.10.2020
- PLAN REVIEW 09.17.2020
- PLAN REVIEW 10.16.2020
- PLAN REVIEW 11.25.2020
- PLAN REVIEW 03.26.2021
- PLAN REVIEW 07.15.2021
- COORDINATION 08.27.2021
- COORDINATION 11.05.2021
- COORDINATION 12.10.2021
- FITNESS EXP. 03.03.2022

AEGIS  
MIXED-USE DEVELOPMENT  
312 E EVERGREEN BOULEVARD, VANCOUVER, WA 98660

SHEET:

B  
E3.01

M  
E  
I  
A  
INC.  
Consulting Engineers  
2007 S.E. Ash St.  
Portland, OR 97214  
PHN: (503) 234-0548  
FAX: (503) 234-0677  
CONTACT: DENISE TAYLOR