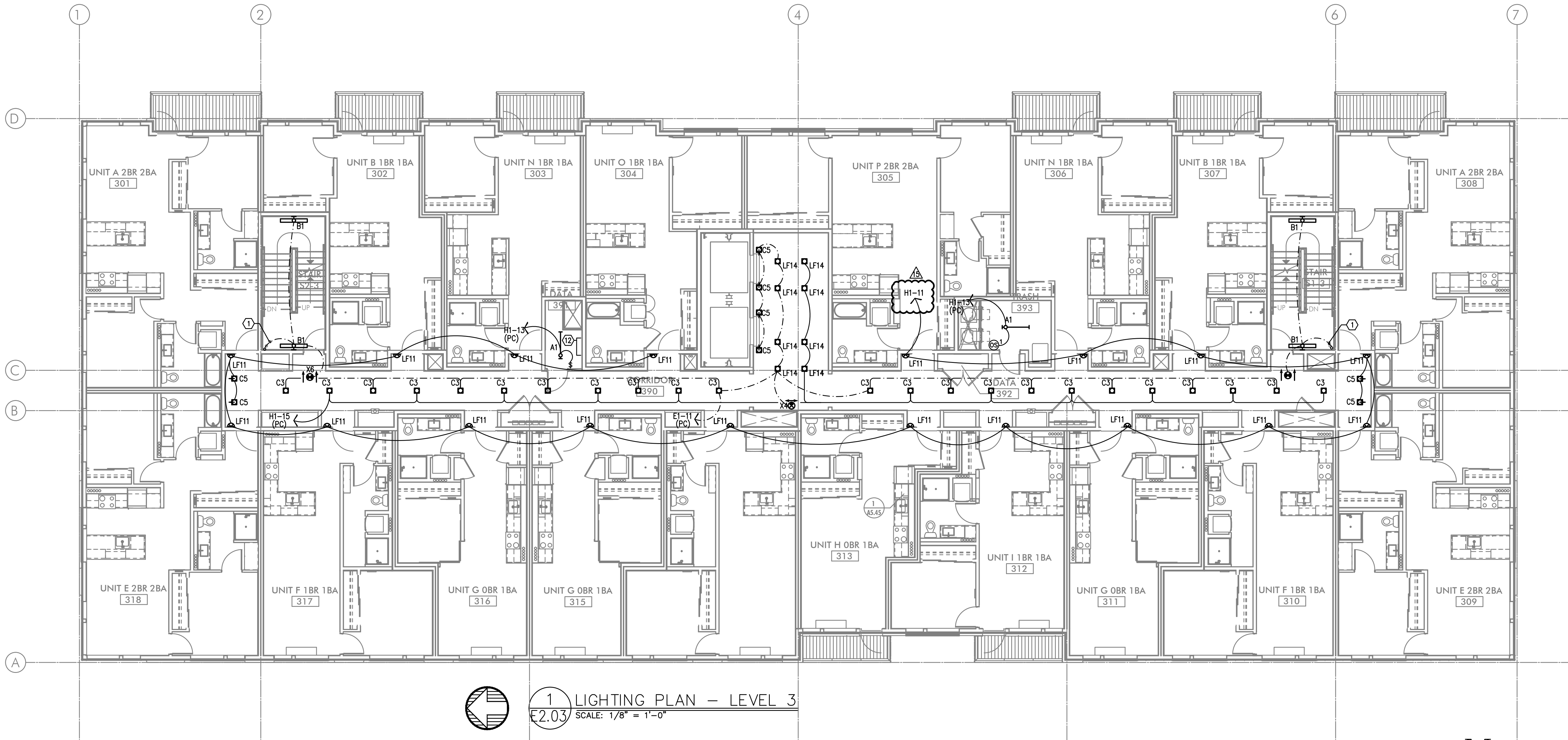


GENERAL LIGHTING NOTES:

- A. ELECTRICAL DRAWINGS ARE DIAGRAMMATICAL AND MAY NOT ACCURATELY REFLECT ACTUAL CONSTRUCTION CONDITIONS. THE ELECTRICAL CONTRACTOR SHALL BE RESPONSIBLE FOR COORDINATING THE INSTALLATION OF ALL ELECTRICAL EQUIPMENT, WITH ALL TRADES PRIOR TO AND DURING CONSTRUCTION.
- B. ELECTRICAL CONTRACTOR TO PROVIDE THERMOSTATS NOT SUPPLIED BY MECHANICAL CONTRACTOR. CONSULT MECHANICAL PLANS FOR ADDITIONAL INFORMATION.
- C. ELECTRICAL CONTRACTOR SHALL PROVIDE INSTALLATION AND FINAL CONNECTION OF THERMOSTATS. CONSULT MECHANICAL CONTRACTOR FOR EXACT REQUIREMENTS PRIOR TO ROUGH IN.
- D. THE ELECTRICAL CONTRACTOR SHALL REFER TO THE ARCHITECTURAL & INTERIOR DESIGN DRAWINGS FOR ALL MOUNTING HEIGHTS AND FINISHES OF DEVICES AND FIXTURES.
- E. REFER TO ENLARGED TYPICAL UNIT PLANS (E4 SERIES SHEETS) FOR TYPICAL POWER & LIGHTING LAYOUTS FOR THE RESIDENTIAL UNITS.
- F. REFER TO SHEET E1.21 FOR LIGHT FIXTURE SCHEDULE.
- G. THE CONTRACTOR SHALL CONSULT THE ARCHITECT AND INTERIOR DESIGNER FOR ALL FIXTURE LOCATIONS PRIOR TO THE START OF ANY ROUGH IN WORK
- H. REFER TO AVAILABLE ARCHITECTURAL AND/OR INTERIOR DESIGN DOCUMENTS & DRAWINGS FOR ADDITIONAL INFORMATION.
- I. OCCUPANCY SENSORS SHALL BE FIELD ADJUSTED TO ENSURE COVERAGE AND PROPER CONTROL.
- J. PROVIDE DIGITAL LIGHTING CONTROLS FOR EACH ROOM/SPACE, CONSISTING OF MULTI-BUTTON SWITCH(ES), OCC SENSORS, POWER PACKS, DAYLIGHT SENSORS, DIMMERS, INTERCONNECTING WIRING, ETC.
- K. THERE SHALL BE NO SURFACE MOUNTED FIXTURES OR PATHWAYS (CONDUIT, ETC) IN ANY PUBLICLY ACCESSIBLE SPACES, INCLUDING STAIRWELLS AND EXIT PASSAGEWAYS WITHOUT PRIOR APPROVAL BY OWNER AND ARCHITECT. ROUTE ALL PATHWAYS WITHIN STUD CAVITIES OR ABOVE FINISHED CEILINGS.
- L. ALL EGRESS FIXTURES SHALL BE WIRED SUCH THAT IN THE EVENT OF A POWER FAILURE, ALL LIGHTS WILL AUTOMATICALLY RETURN TO FULL POWER. REFER TO SWITCHING DETAILS ON SHEET E1.22.

KEYED NOTES:

1. CONTINUE CIRCUIT UP THROUGH THE STAIRWELL.
2. EXTERIOR BUILDING LIGHTS TO BE CONTROLLED VIA INTEGRAL AND/OR REMOTE PHOTOCELL FOR DUSK-TILL-DAWN OPERATION. REFER TO LIGHT FIXTURE SCHEDULE ON SHEET E1.21-E1.22 FOR ADDITIONAL INFORMATION.
3. LEASE SPACE LIGHTING TO HAVE DUAL SWITCHES. ONE TO CONTROL NORMAL POWER LIGHTS AND ONE TO ACT AS A MANUAL OVERRIDE FOR NIGHT LIGHT FIXTURES (NL). INTENT IS THAT THE NIGHT LIGHTS ARE TO BE "ON" 24/7 AND ONLY ILLUMINATED AT NIGHT VIA PHOTOCELL FOR DUSK-TILL-DAWN OPERATION.. NIGHT LIGHT FIXTURES SHALL ALSO BE EQUIPPED WITH EMERGENCY BATTERY BACKUP IN THE EVENT OF A POWER FAILURE. ALL LIGHT FIXTURES IN THE LEASE SPACE ARE TO BE ON A SINGLE CIRCUIT AND TEMPORARILY FED FROM THE HOUSE PANEL.
4. LIGHTING CONTROL FOR LOBBY, CORRIDOR & COMMON SPACES. REFER TO DETAIL #1, SHEET E1.23 FOR MORE INFORMATION.
5. LIGHTING CONTROLS FOR THIS AREA LOCATED IN THE MAINTENANCE ROOM. SEE SHEET NOTE #4 FOR MORE INFORMATION.
6. NOT USED.
7. BIKE ROOM LIGHT FIXTURES CONTROLLED BY CEILING MOUNT OCCUPANCY SENSOR.
8. FIXTURE FINISH TO MATCH SOFFIT METAL.
9. PROVIDE POWER CONNECTION FOR COVE LIGHTING AT ALL WALL NICHES TO WALL WASH ART INSTALLATIONS. REFER TO INTERIOR DECORATOR'S INTERIOR ELEVATIONS FOR ADDITIONAL INFORMATION REGARDING LENGTH, LOCATIONS AND CONTROL TYPE TO BE INSTALLED. USE FIXTURE TYPE 'C1' AND TIE INTO LOBBY LIGHTING CIRCUIT H1-5.
10. PROVIDE CEILING MOUNTED PHOTOCELL TO PROVIDE DIMMING OF LIGHT FIXTURES DURING DAYLIGHT PERIODS.
11. REFER TO ART LIGHTING DETAILS ON SHEET E1.24. REFER TO LIGHT FIXTURE SCHEDULE ON SHEET E1.22. ROUTE CONDUCTORS THROUGH EXTERIOR WALL AND TIE INTO CIRCUIT INDICATED. PROVIDE SEALANT AS REQUIRED. COORDINATE WORK WITH ALL TRADES, FIXTURE PROVIDER, ARCHITECT AND DESIGNER.
12. TYPICAL LIGHTING CONTROL FOR RESIDENTIAL CORRIDORS. REFER TO DETAIL #2, SHEET E1.23 FOR MORE INFORMATION.
13. FITNESS ROOM LIGHT FIXTURES SHALL BE CONTROLLED VIA OCCUPANCY SENSOR, SUCH THAT LIGHTS SHALL DIM DOWN BY 50% DURING PERIODS OF NO ACTIVITY AND RETURN TO 100% LIGHT OUTPUT ON OCCUPANCY DETECTION. FIXTURES SHALL REMAIN ON FOR A MINIMUM OF 30 MINUTES OF AREA VACANCY.
14. CIRCUIT SERVICE CORRIDOR LIGHT FIXTURES AHEAD OF SWITCHED FIXTURES ON SAME CIRCUIT. CORRIDOR LIGHT FIXTURES TO BE CONSTANT 'ON'.
15. MOUNT (5) FIVE TYPE S8 LIGHT FIXTURES, EVENLY SPACED, AT 4-INCHES BELOW THE TOP OF WALL FOR ART INSTALLATION. COORDINATE WITH THE ARTIST AND OWNER FOR EXACT LOCATION AND FIELD AIM.



1 LIGHTING PLAN - LEVEL 3  
E2.03 SCALE: 1/8" = 1'-0"



EXPIRES: July 6th, 2020

IN THE EVENT CONFLICTS ARE DISCOVERED BETWEEN THE ORIGINAL SIGNED AND SEALED DOCUMENTS PREPARED BY THE ARCHITECTS AND/OR THEIR CONSULTANTS, AND ANY COPY OF THE DOCUMENTS TRANSMITTED BY MAIL, FAX, ELECTRONICALLY OR OTHERWISE, THE ORIGINAL SIGNED AND SEALED DOCUMENTS SHALL GOVERN.

PROJECT # 2017-053

DATE: 11/06/2019

REVISIONS

PLAN REVIEW 01.24.2020

PLAN REVIEW 03.13.2020

PLAN REVIEW 04.24.2020

PLAN REVIEW 08.10.2020

PLAN REVIEW 09.17.2020

PLAN REVIEW 10.16.2020

PLAN REVIEW 11.25.2020

PLAN REVIEW 03.26.2021

PLAN REVIEW 07.15.2021

COORDINATION 08.27.2021

COORDINATION 11.05.2021

COORDINATION 12.10.2021

FITNESS EXP. 03.03.2022

AEGIS  
MIXED-USE DEVELOPMENT  
312 E EVERGREEN BOULEVARD, VANCOUVER, WA 98660

SHEET:

B  
E2.03

M  
Consulting Engineers  
2007 S.E. Ash St.  
Portland, OR 97214  
PHN: (503) 234-0548  
FAX: (503) 234-0677  
WWW.MFIA-ENG.COM  
CONTACT: DENISE TAYLOR