



EXPIRES: July 6th, 2020

IN THE EVENT CONFLICTS ARE DISCOVERED  
BETWEEN THE ORIGINAL SIGNED AND SEALED  
DOCUMENTS PREPARED BY THE ARCHITECTS  
AND/OR THEIR CONSULTANTS, AND ANY COPY OF  
THE DOCUMENTS TRANSMITTED BY MAIL, FAX,  
ELECTRONICALLY OR OTHERWISE, THE ORIGINAL  
SIGNED AND SEALED DOCUMENTS SHALL GOVERN.

PROJECT # 2017-053  
DATE: 11/06/2019

## REVISIONS

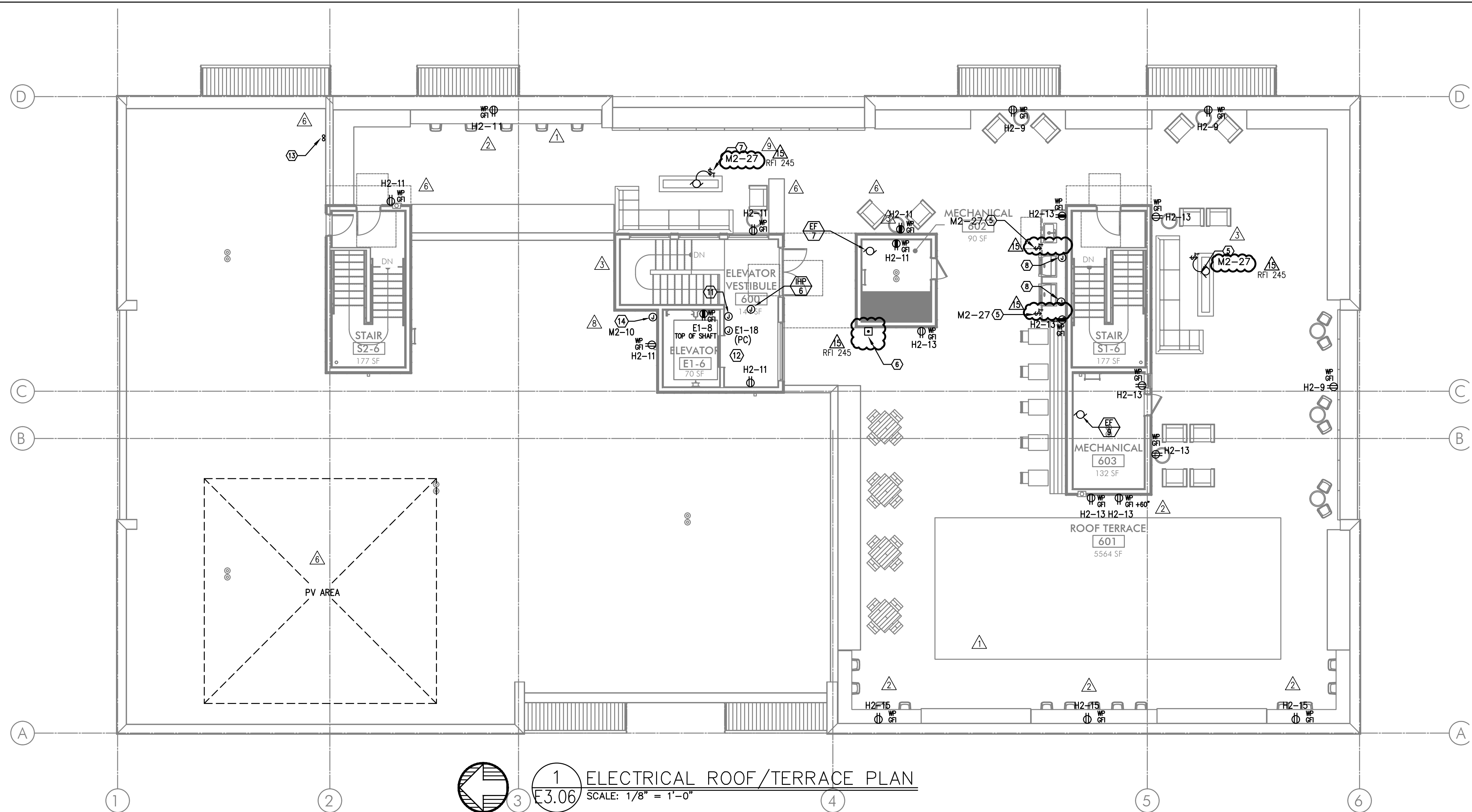
△ PLAN REVIEW 01.24.2020  
△ PLAN REVIEW 03.13.2020  
△ PLAN REVIEW 04.24.2020  
△ PLAN REVIEW 08.10.2020  
△ PLAN REVIEW 09.17.2020  
△ PLAN REVIEW 10.16.2020  
△ PLAN REVIEW 11.25.2020  
△ PLAN REVIEW 03.26.2021  
△ PLAN REVIEW 07.15.2021  
△ COORDINATION 08.27.2021  
△ COORDINATION 11.05.2021  
△ COORDINATION 12.10.2021  
△ COORDINATION 03.03.2022

**AEGIS**  
**MIXED-USE DEVELOPMENT**  
312 E EVERGREEN BOULEVARD, VANCOUVER, WA 98660

SHEET:

**A**  
**E3.06**

**M**  
**F**  
**A**  
**INC.**  
Consulting Engineers  
2007 S.E. Ash St.  
Portland, OR 97214  
PHN: (503) 234-0548  
FAX: (503) 234-0677  
WWW.MFIA-ENG.COM  
CONTACT: DENISE TAYLOR



## 1 ELECTRICAL ROOF/TERRACE PLAN

E3.06 SCALE: 1/8" = 1'-0"

## GENERAL POWER NOTES:

- A. ALL PLANS ARE CONSIDERED DIAGRAMMATICAL. THEREFORE ALL EQUIPMENT SIZES AND DEVICE LOCATIONS ARE APPROXIMATE AND SUBJECT TO FIELD CONDITIONS AND PRODUCT APPROVAL.
- B. ELECTRICAL CONTRACTOR TO PROVIDE THERMOSTATS NOT SUPPLIED BY MECHANICAL CONTRACTOR. CONSULT MECHANICAL PLANS FOR ADDITIONAL INFORMATION.
- C. ELECTRICAL CONTRACTOR SHALL PROVIDE INSTALLATION AND FINAL CONNECTION OF THERMOSTATS. CONSULT MECHANICAL CONTRACTOR FOR EXACT REQUIREMENTS PRIOR TO ROUGH IN.
- G. REFER TO INTERIOR DECORATOR AND/OR ARCHITECTURAL DRAWINGS FOR DIMENSIONED LOCATION(S) AND ELEVATIONS OF FIXTURES & DEVICES. OTHER DEVICES SHOWN ON THE ELECTRICAL PLANS AND NOT INDICATED ON THE DECORATOR'S OR ARCHITECT'S DRAWINGS, SHALL BE INSTALLED AT STANDARD MOUNTING HEIGHT AS INDICATED THE SYMBOL LIST.
- H. REFER TO ENLARGED TYPICAL UNIT PLANS (E4 SERIES SHEETS) FOR TYPICAL POWER & LIGHTING LAYOUTS FOR THE APARTMENT UNITS.
- I. ELECTRICAL EQUIPMENT SHOWN IN THE ELECTRICAL ROOMS IS APPROXIMATE, BASED ON TYPICAL PRODUCTS. CONTRACTOR SHALL VERIFY ANY SUBMITTED EQUIPMENT WILL FIT WITHIN THE SPACE PROVIDED, PRIOR TO PRODUCT SUBMITTAL REVIEW.
- J. ELECTRICAL CONTRACTOR SHALL COORDINATE WITH THE LOW VOLTAGE ("T" SERIES) PLANS, INCLUDING FIRE ALARM AND SYSTEMS INSTALLER, AND PROVIDE ROUGH IN AS NEEDED.
- K. THERE SHALL BE NO SURFACE MOUNTED FIXTURES OR PATHWAYS (CONDUIT, ETC.) IN ANY PUBLICLY ACCESSIBLE SPACES, INCLUDING STAIRWELLS AND EXIT PASSAGEWAYS WITHOUT PRIOR APPROVAL BY OWNER AND ARCHITECT. ROUTE ALL PATHWAYS WITHIN STUD CAVITIES OR ABOVE FINISHED CEILINGS.
- L. "SOLAR READY" WORK FOR FUTURE PHOTOVOLTAIC ARRAY SHALL BE PER THE ELECTRICAL REQUIREMENTS AS DEFINED BY THE WASHINGTON STATE ADMINISTRATION CODE, TITLE 51, CHAPTER 51, SECTION 60106.

## KEYED NOTES:

- HEAT PUMP UNITS TO BE INTERCONNECTED WITH A CORRESPONDING APARTMENT FAN COIL UNIT. REFER TO TYPICAL UNIT PANEL SCHEDULES ON E1.17 FOR CIRCUITING INFO. COORDINATE WITH THE MECHANICAL EQUIPMENT INSTALLER FOR EXACT POWER REQUIREMENTS AND LOCATIONS PRIOR TO ROUGH IN. FOR ADDITIONAL INFORMATION, CONSULT THE MECHANICAL PLAN SHEETS.
- NOT USED.
- ELECTRICAL CONTRACTOR TO COORDINATE WITH LANDSCAPE PROVIDER FOR EXACT LOCATION OF POWER CONNECTIONS AS REQUIRED FOR LANDSCAPE IRRIGATION AND SHALL BE CIRCUITED VIA CIRCUIT H2-19.
- PROVIDE ONE 20A, 120V, 1P CIRCUIT FOR GAS FIREPLACE. CONSULT WITH MECHANICAL CONTRACTOR FOR EXACT WIRING REQUIREMENTS PRIOR TO ROUGH IN. CONSULT INTERIOR DECORATOR FOR EXACT LOCATION OF CONTROL SWITCH(ES) IF REQUIRED.
- PROVIDE 120V TWIST TIMER SWITCH (MAX. 60 MINUTES, "NO HOLD") IN WEATHER PROOF BOX FOR GAS GRILL CONTROLS. SWITCH TO BE MOUNTED IN FACE OF CABINET (SEE SHEET L704 FOR MOUNTING LOCATION. CIRCUIT FROM PANEL 'M2'. SEE DETAIL 4/E1.18 FOR EMERGENCY SHUT-OFF DIAGRAM.
- PROVIDE EMERGENCY SHUT-OFF CONTROL FOR GAS APPLIANCES LOCATED ON TERRACE. COORDINATE INSTALLATION WITH MECHANICAL CONTRACTOR. CIRCUIT FROM PANEL "M2". SEE DETAIL 4/E1.18 FOR EMERGENCY SHUT-OFF. MOUNT AT STANDARD SWITCH HEIGHT.
- PROVIDE 120V TWIST TIMER SWITCH (MAX. 60 MINUTES, "NO HOLD") IN WEATHER PROOF BOX FOR FIRE PIT IGNITER CONTROLS. MOUNT IN SIDE OF TABLE AT 15" AFF. CIRCUIT FROM PANEL "M2". SEE DETAIL 4/E1.18 FOR EMERGENCY SHUT-OFF DIAGRAM.
- THE CONTRACTOR TO PROVIDE TWO(2) WEATHER PROOF J-BOXES BELOW GRILL COUNTER FOR FUTURE USE. EACH TO BE FED WITH ONE 20A, 120V CIRCUIT RESERVED IN PANEL 'M2'.
- PROVIDE ROUGH IN, AS NEEDED, FOR AUDIO SYSTEM CONTROLS.
- PROVIDE ROUGH IN, AS NEEDED, FOR WIFI SYSTEM.
- AREA OF REFUGE PANEL. CONSULT FIRE ALARM PLANS ("T" SERIES SHEETS) AND PROVIDE ROUGH IN AS