



Phone: 503-234-5071
2220 SE Ninth Ave., Portland, OR 97214
Fax: 503-233-0451
800-848-5199

SUBMITTAL

PROJECT: Jewell Elementary School Remodel
LOCATION: Bend, OR
ARCHITECT: Steele Associates Architects
ENGINEER: MFIA
CONTRACTOR: Bend Heating
DATE SUBMITTED: June 4, 2015
PROJECT MANAGER: Erin Deschermeier EMAIL: Erind@johnsonair.com
ACCOUNT MANAGER: Douglas Smith EMAIL: Dsmith@johnsonair.com
PLAN DATE: _____
ADDENDUMS: Clar 1,2,3

WE ARE PLEASED TO SUBMIT THE FOLLOWING LIST OF EQUIPMENT FOR APPROVAL. BASED UPON INFORMATION RECEIVED WE BELIEVE THIS MATERIAL CONFORMS TO THE SPECIFICATIONS. IT SHALL REMAIN THE CONTRACTOR'S RESPONSIBILITY TO VERIFY SIZES AND QUANTITIES PRIOR TO ORDER RELEASE. MATERIAL WILL BE RELEASED TO PRODUCTION UPON RETURN OF APPROVED SUBMITTALS TO JOHNSON AIR PRODUCTS AT 2220 S.E. 9TH AVE., PORTLAND, OREGON 97214.

MATERIAL SUBMITTED: Fans

SPECIFICATIONS: 233400 2.1

MANUFACTURER: Greenheck

No Exceptions Make Corrections Rejected
 Submit Specified Item Revise & Submit

X

Checking is only to verify general conformance and compliance with the design concept and contract documents. Subcontractor or supplier is responsible for dimensions, errors and omissions in these drawings or lists which he shall confirm and correlate at the jobsite with his work or fabrication and with that of other trades affected by his work. He shall be responsible for any deviation from the contract documents or these drawings or lists unless he has obtained written approval to do so, and shall be responsible for the satisfactory completion of his work.

CS Construction
1506 NE 1st Street, unit #1 Bend, OR 97701 (541) 617-9190
Date: 6/8/15 By: Matt Freeman
Submittal #4 - 23 2400 HVAC Fans

(Please see attached literature)

SUBMITTAL

Job Title: **Jewell Elementary School Remodel**

Job Site: Bent Heating

, OR
United States

Elevation: (ft) 108

Date: 06/04/15

Submitted By: Erin Deschermeier

JOHNSON AIR PRODUCTS

2220 SE NINTH AVE

PORTLAND , OR 97214-4661

US

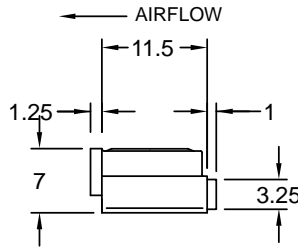
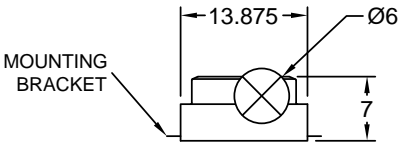
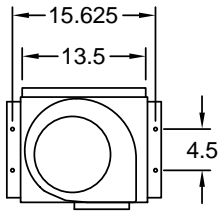
Phone: (503)234-5071

Fax: (503)233-0451

Email Address: erind@johnsonair.com



P.O. Box 410 Schofield, WI 54476 (715) 359-6171 FAX (715) 355-2399 www.greenheck.com



Model: CSP-B150

Inline Cabinet Fan

Standard Construction Features:

- Corrosion resistant galvanized steel scroll and housing - Round outlet duct collar with integral back draft damper - Single inlet forward curved wheel - Plug type disconnect - Adjustable mounting brackets

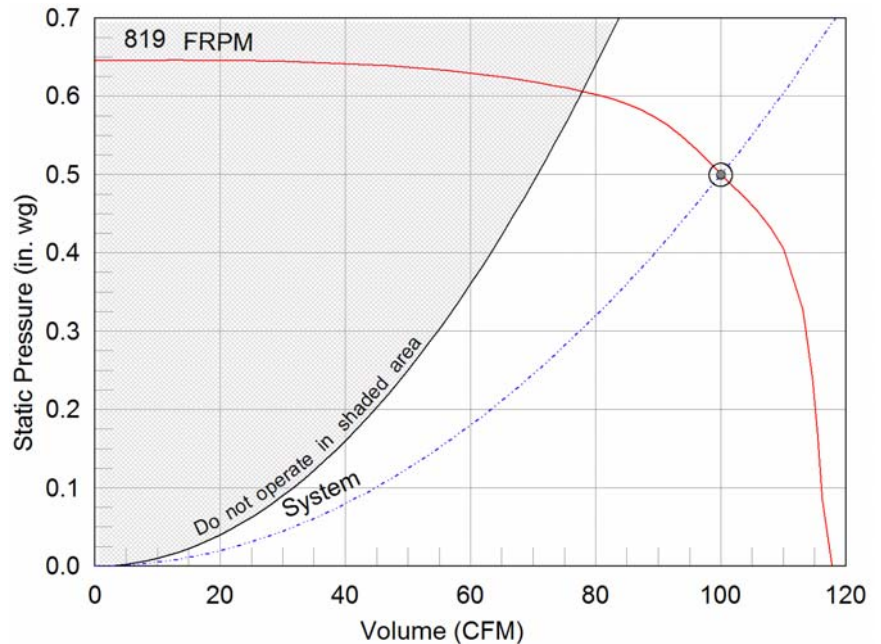
Selected Options & Accessories:

Motor with Thermal Overload
Motor with 40 Degree C Ambient Temperature
UL/cUL 507 Listed - Electric Fan
Solid State Speed Control, 5 Amp (PN 385031) Shipped Loose
Round Duct Connection
Polypropylene Wheel Material

Dimensional	
Quantity	1
Weight w/o Acc's (lb)	11
Weight w/ Acc's (lb)	12

Performance	
Requested Volume (CFM)	100
Actual Volume (CFM)	100
External SP (in. wg)	0.5
Total SP (in. wg)	0.5
Fan RPM	819
Amps (A)	1.7
Elevation (ft)	108
Airstream Temp.(F)	70
Air Density (ft3)	0.075
Sones	0.7

Motor	
Motor Mounted	Yes
Input Watts (W)	129
V/C/P	115/60/1
Enclosure	ODP



- △ Operating Bhp point
- Operating point at Total SP
- Operating point at External SP
- Fan curve
- - - System curve
- · · Brake horsepower curve

Notes:

All dimensions shown are in units of in.
*FLA is approximate and will vary slightly with the motor.
LwA - A weighted sound power level, based on ANSI S1.4
dBA - A weighted sound pressure level, based on 11.5 dB
attenuation per Octave band at 5 ft
Sones - calculated using AMCA 301 at 5 ft
AMCA certified ratings seal applies to some ratings only.
Wattage is shown at free air.
Wattage is approximate and may vary between motors.

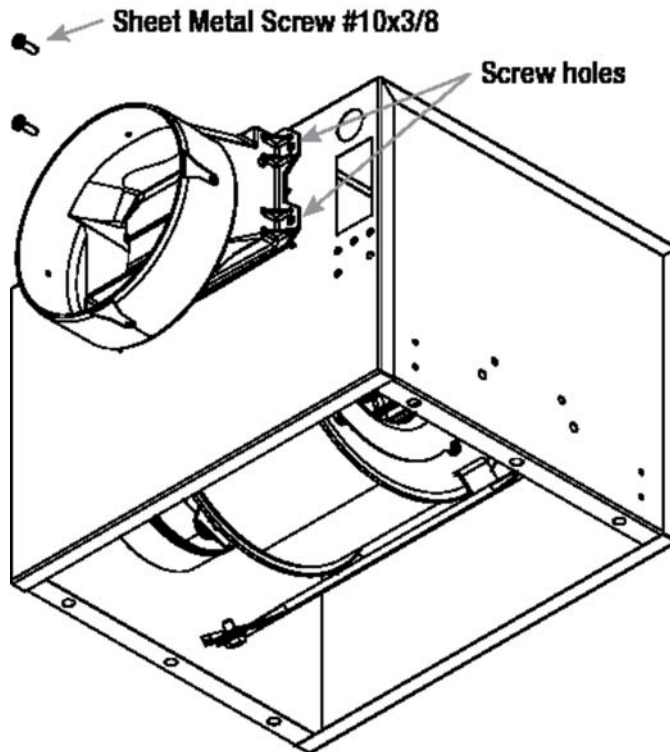


Round Duct Connector

Model: RDC

Standard Construction Features:

-Constructed of Polypropylene - Replaces the square discharge duct connector and damper using the existing mounting holes



Notes: All dimensions shown are in units of in.