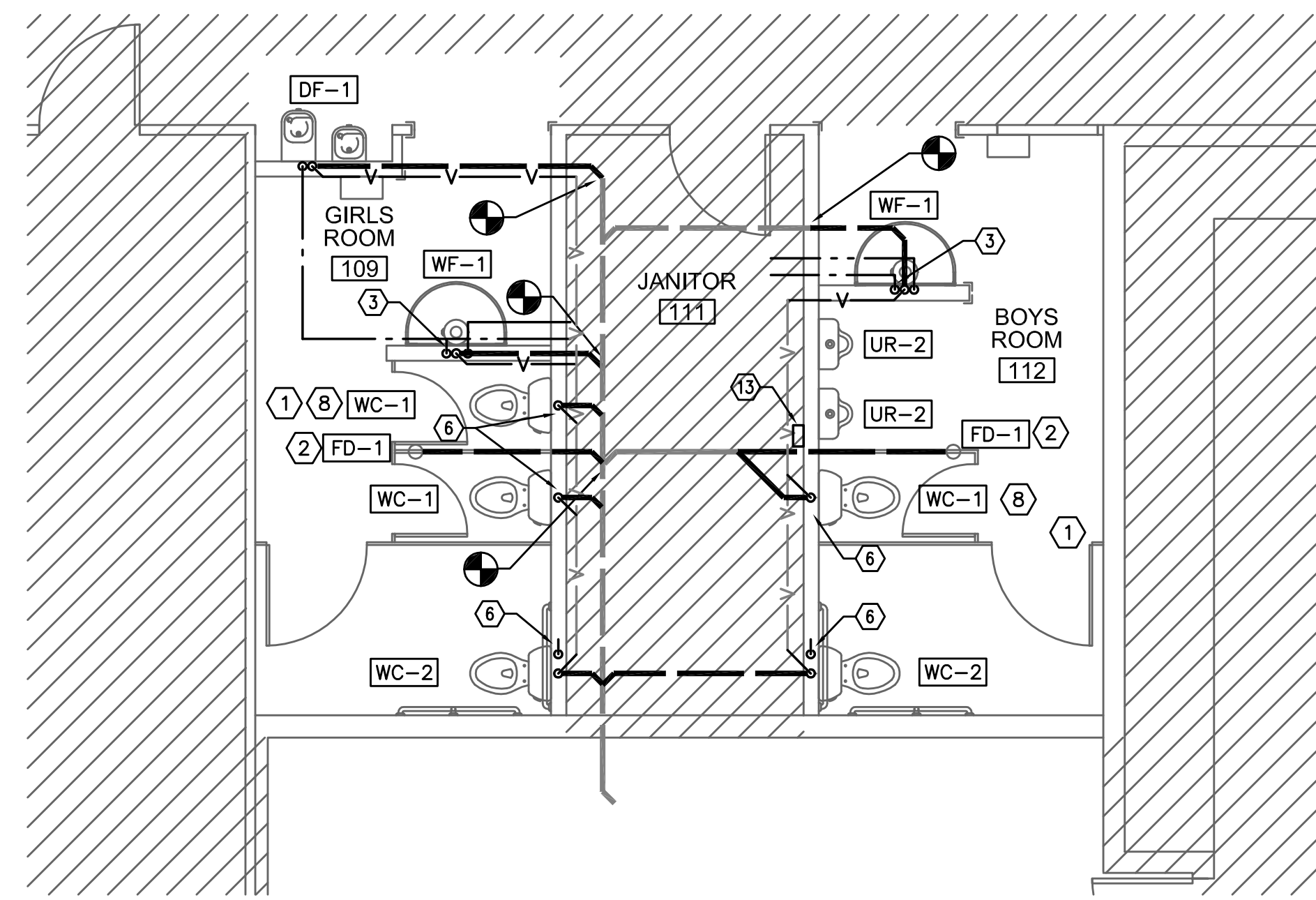
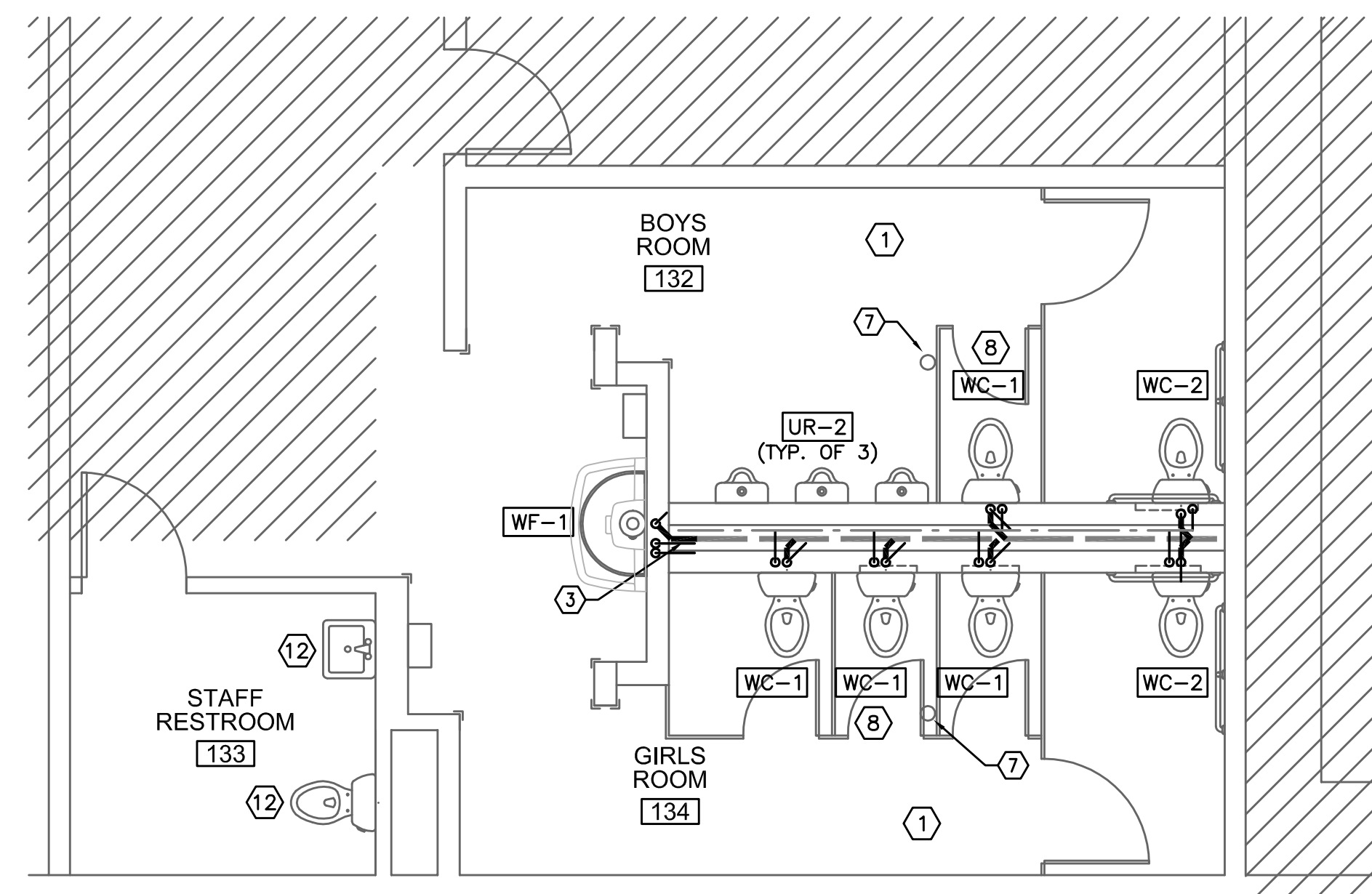


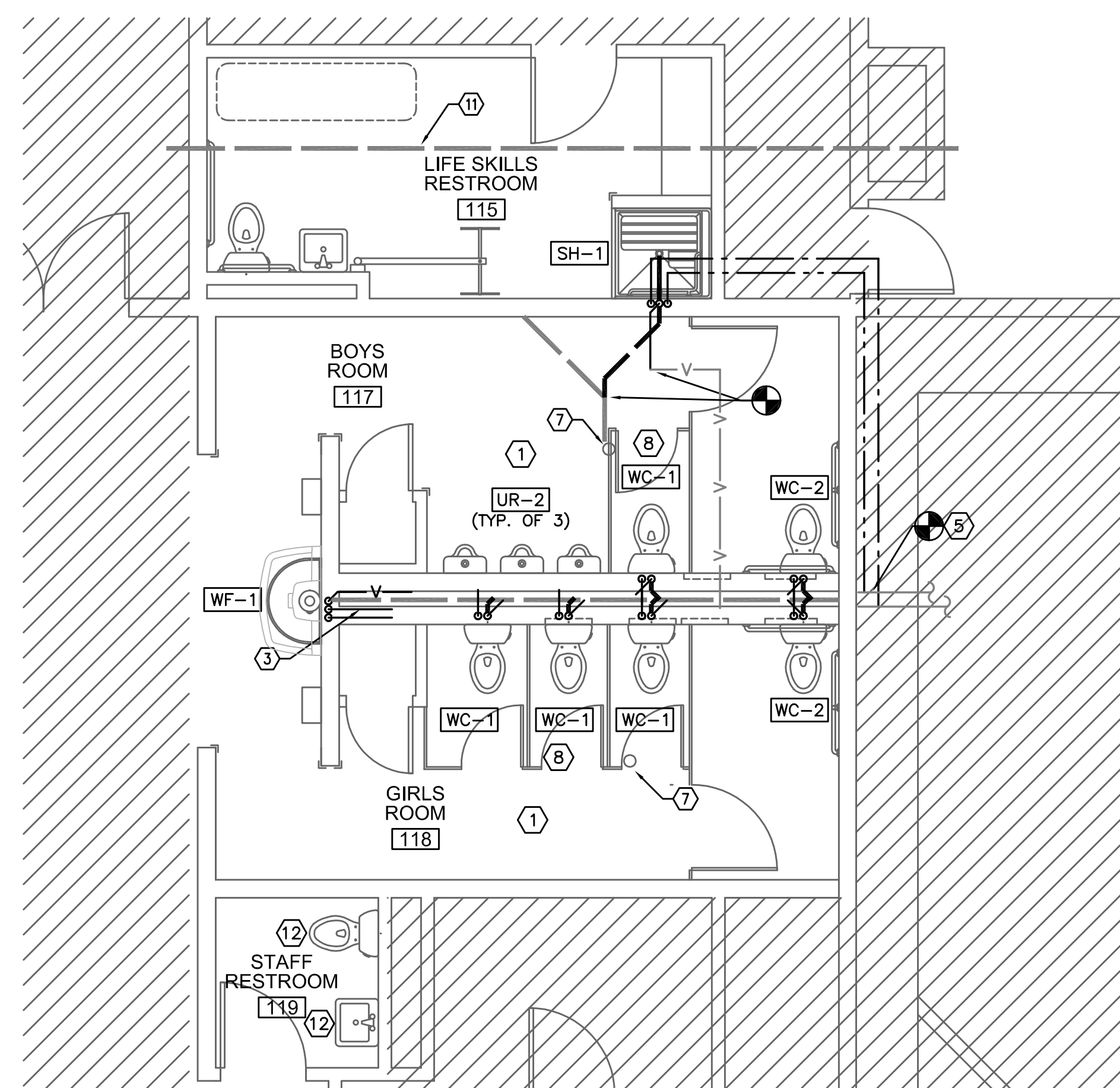
4 ENLARGED SOUTH RESTROOM PLUMBING PLAN  
 P1.22 SCALE: 1/4" = 1'-0"



1 ENLARGED NORTH RESTROOM PLUMBING PLAN  
 P1.22 SCALE: 1/4" = 1'-0"



2 ENLARGED WEST RESTROOM PLUMBING PLAN  
 P1.22 SCALE: 1/4" = 1'-0"



3 ENLARGED EAST RESTROOM PLUMBING PLAN  
 P1.22 SCALE: 1/4" = 1'-0"

**GENERAL NOTES:**

1. VERIFY ALL EXISTING CONDITIONS RELATIVE TO THE SCOPE OF WORK.
2. COORDINATE WORK WITH OWNER, ELECTRICAL AND ARCHITECTURAL.
3. SAW CUT FLOOR AS NEED TO INSTALL FIXTURE WASTE PIPING.
4. PROVIDE TRAP PRIMERS FOR NEW FLOOR DRAIN LOCATIONS.

**KEY NOTES:**

- 1 PROVIDE PLUMBING FIXTURES, TRIM, AND SUPPORTS. PROVIDE WASTE, VENT AND WATER CONNECTIONS AT NEW LOCATIONS. CUT PLUMBING CHASE WALLS AT NEW FIXTURE LOCATIONS AND PATCH WALL TO MATCH EXISTING.
- 2 PROVIDE FLOOR DRAIN CONNECT TO EXISTING WASTE.
- 3 EXTEND HW, CW, WASTE, AND VENT TO WF-1.
- 4 CONNECT 2" CW, 3/4" HW TO EXISTING CW, HW, AND V IN CEILING SPACE. CONNECT WASTE TO EXISTING.
- 5 CONNECT CW AND HW FOR SHOWER TO EXISTING 2 1/2" CW AND 3/4" HW
- 6 CONNECT WATER CLOSET TO EXISTING WATER SUPPLY IN WALL.
- 7 RETAIN (E) MEANS TO TRAP PRIMER.
- 8 WHERE NEW WALL HUNG WATER CLOSETS ARE SHOWN IN NEW LOCATIONS. PROVIDE NEW FIXTURE SUPPORTS IN CHASE AND EXTEND WASTE AND WATER LINES AND CONNECT.
- 9 INSTALL SALVAGED BOTTLE FILLER DRINKING FOUNTAIN. CONNECT 1/2" CW, 1 1/2" W AND V. PATCH WALL TO MATCH EXISTING.
- 10 ROUTE EXISTING 3" W FROM FAN ROOM FLOOR DRAIN OVER TO WALL AND DOWN TO NEW WASTE CONNECTION.
- 11 POSSIBLE ALTERNATE WASTES LINE CONNECTION, FIELD VERIFY.
- 12 REINSTALL EXISTING FIXTURES AT SAME LOCATION.
- 13 TRAP PRIMER VALVE. PROVIDE PRIMING LINES TO FLOOR DRAINS.

**RECORD DRAWING:**

THIS DRAWING HAS BEEN UPDATED TO REFLECT CHANGES MADE DURING CONSTRUCTION BASED UPON INFORMATION FURNISHED TO THE ENGINEER BY THE INSTALLATION CONTRACTOR. NO WARRANTY EITHER EXPLICIT OR IMPLIED IS GIVEN BY MFA, INC. AS TO THE ACCURACY AND/OR COMPLETENESS OF THIS INFORMATION.

M Consulting Engineers  
 2007 S.E. Ash St.  
 Portland, OR 97214  
 PHN: (503) 234-6548  
 FAX: (503) 234-0877  
 INC. WWW.MFA-ENG.COM  
 CONTACT: JIM TORMEY

RECORD SET  
 1/29/2016

COPYRIGHT 2015  
 STEELE ASSOCIATES ARCHITECTS LLC  
 All rights reserved. Reproduction or  
 use in any form or by any means --  
 graphic, electronic, mechanical, etc.  
 -- without written permission of  
 STEELE ASSOCIATES ARCHITECTS LLC is  
 and subject to criminal prosecution.

STEEL ASSOCIATES  
 ARCHITECTS LLC  
 760 NW YORK DRIVE, SUITE 200  
 BEND, OR 97701  
 541.382.9867 FAX 541.385.8816  
 info@steele-arch.com

JEWELL ELEMENTARY REMODEL  
 20350 MURPHY ROAD  
 BEND OREGON  
 ENLARGED PLUMBING PLANS

PRINTS ISSUED:	DATE:
JOB NO. 14117.01	DATE 11-21-14
DRAWN BY EPK	CHECKED BY JLT
REVISIONS APPENDIX 1	DATE 4/13/15

SHEET NO. P1.22 OF SHEETS

RECORD SET - JANUARY 29, 2016