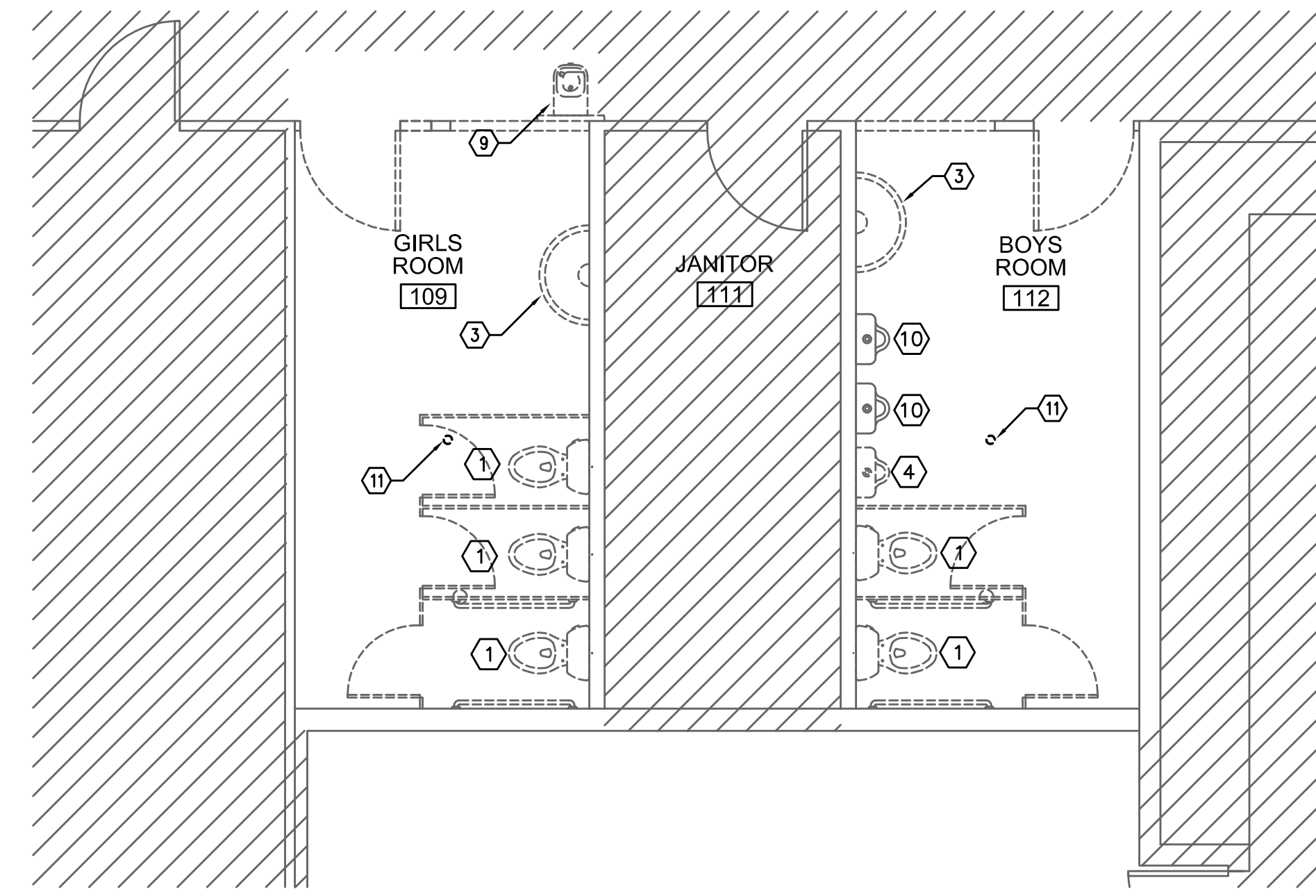
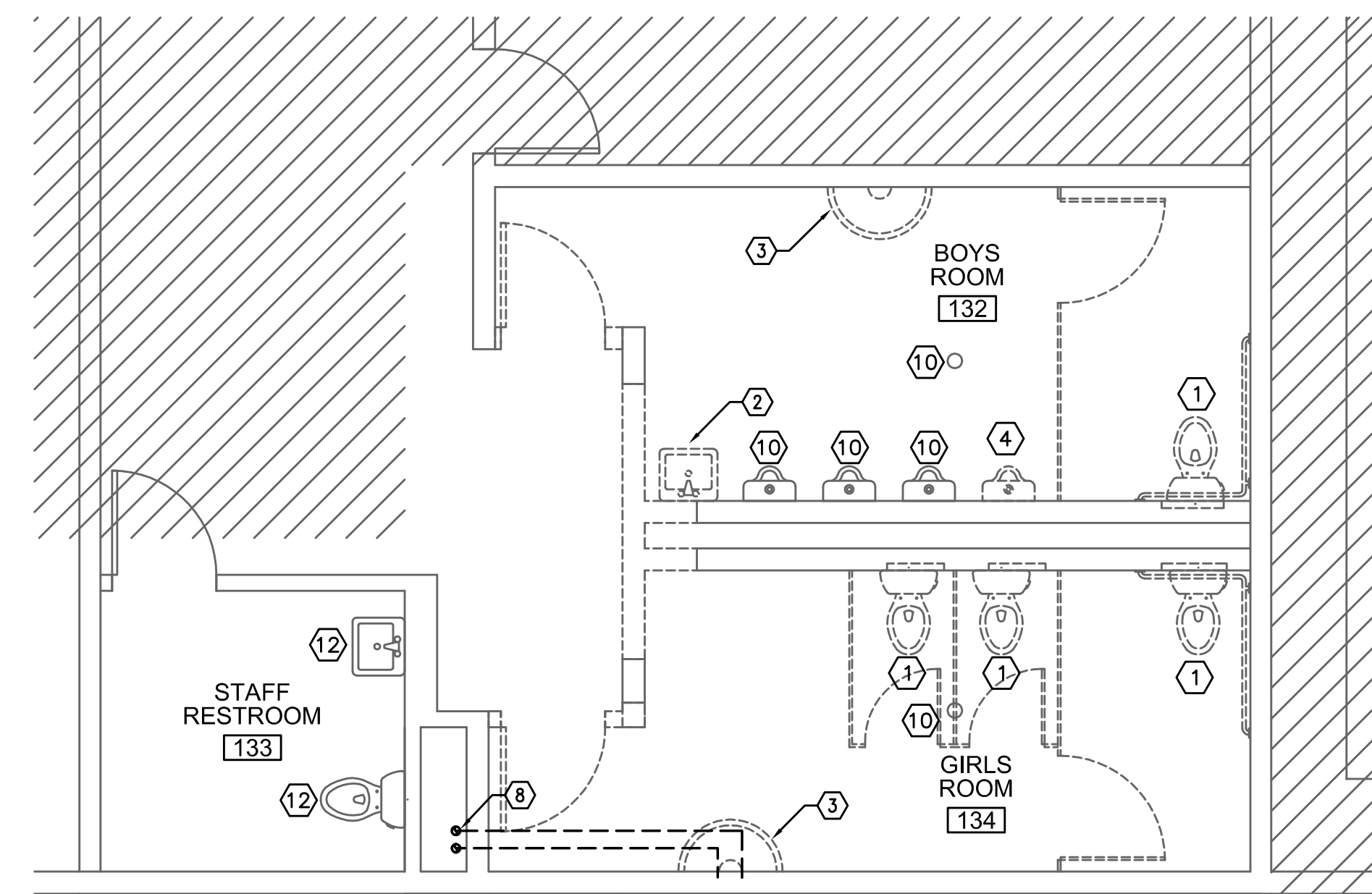


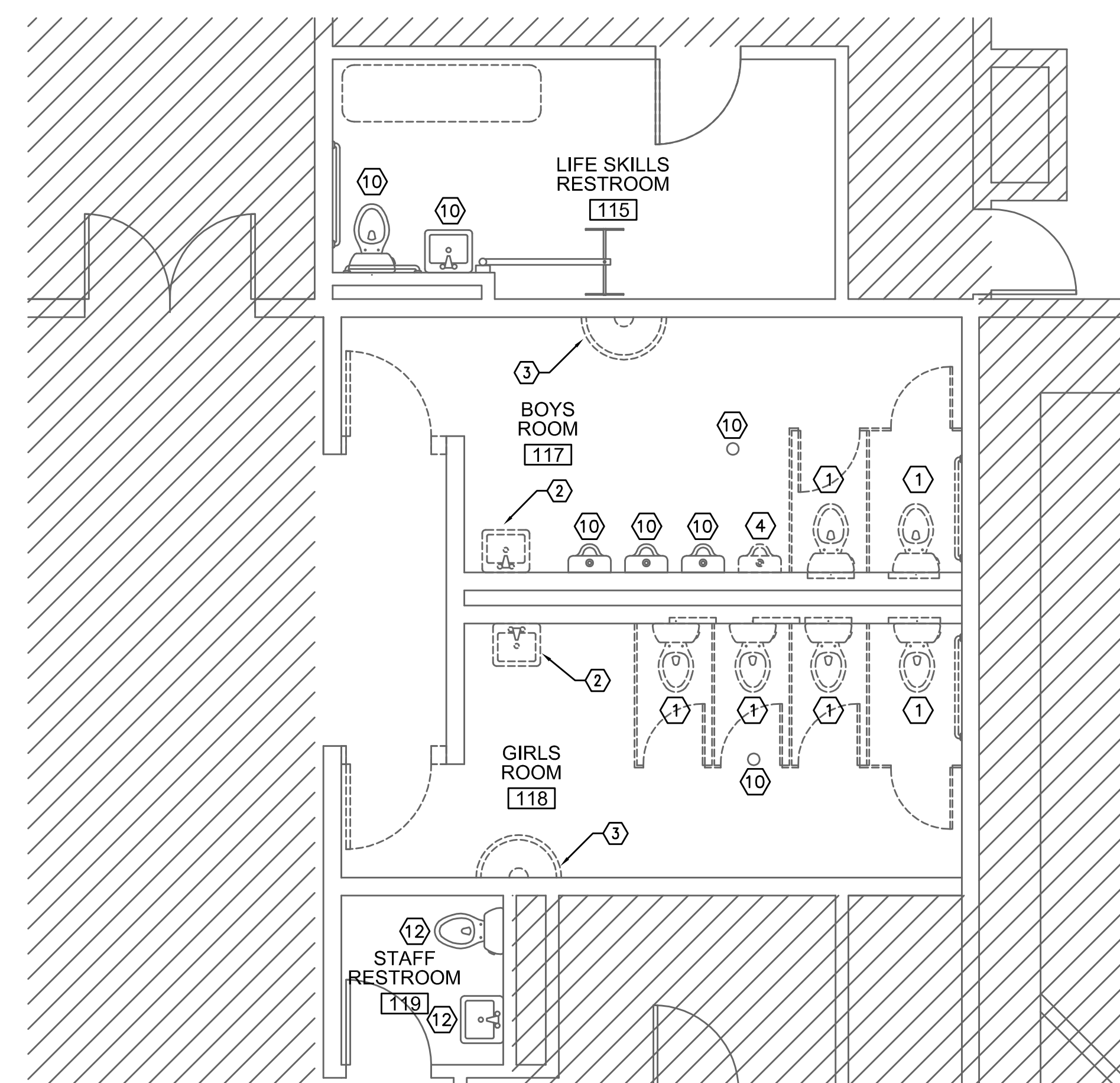
4 ENLARGED SOUTH RESTROOM DEMO PLAN
 P1.02 SCALE: 1/4" = 1'-0"



1 ENLARGED NORTH RESTROOM DEMO PLAN
 P1.02 SCALE: 1/4" = 1'-0"



2 ENLARGED WEST RESTROOM DEMO PLAN
 P1.02 SCALE: 1/4" = 1'-0"



3 ENLARGED EAST RESTROOM DEMO PLAN
 P1.02 SCALE: 1/4" = 1'-0"

GENERAL NOTES:

1. VERIFY ALL EXISTING CONDITIONS RELATIVE TO THE SCOPE OF WORK.
2. COORDINATE WORK WITH OWNER, ELECTRICAL AND ARCHITECTURAL.
3. ALL FLOOR MOUNTED URINALS TO REMAIN EXCEPT WHERE NOTED OTHERWISE.
4. WHERE FIXTURES ARE PERMANENTLY REMOVED CAP ALL SUPPLY, WASTE, AND VENT PIPING IN CONCEALED LOCATION.

KEY NOTES:

- 1 REMOVE EXISTING WATER CLOSET
- 2 REMOVE EXISTING LAVATORY AND ASSOCIATED PIPING BACK TO MAIN.
- 3 REMOVE EXISTING WASH FOUNTAIN.
- 4 REMOVE EXISTING URINAL.
- 5 REMOVE EXISTING SHOWERS, WASTE, VENT AND SUPPLY LINES.
- 6 REMOVE EXISTING FLOOR DRAIN. CAP BELOW FLOOR.
- 7 SAW CUT FLOOR FOR WASTE PIPING.
- 8 CUT AND CAP WATER PIPING SERVING WASH FOUNTAIN.
- 9 REMOVE EXISTING DRINKING FOUNTAIN. SAVE FOR REUSE.
- 10 EXISTING PLUMBING FIXTURE TO REMAIN.
- 11 SAWCUT FLOOR TO RELOCATE FLOOR DRAIN LOCATION. PROVIDE NEW FIXTURE AND PLUMBING LINE.
- 12 REMOVE EXISTING FIXTURE. SAVE TO BE REINSTALLED.
- 13 SAWCUT FLOOR TO EXTEND WASTE LINE TO FIXTURE LOCATION AND OPEN WALL FOR SUPPLY AND VENT INSTALLATION.

RECORD DRAWING:

THIS DRAWING HAS BEEN UPDATED TO REFLECT CHANGES MADE DURING CONSTRUCTION BASED UPON INFORMATION FURNISHED TO THE ENGINEER BY THE INSTALLATION CONTRACTOR. NO WARRANTY EITHER EXPLICIT OR IMPLIED IS GIVEN BY MFA, INC. AS TO THE ACCURACY AND/OR COMPLETENESS OF THIS INFORMATION.

M Consulting Engineers
 2007 S.E. Ash St.
 Portland, OR 97214
 PHN: (503) 234-0548
 FAX: (503) 234-0677
 WWW.MFA-ENG.COM
 CONTACT: JIM TORMEY

RECORD SET
 1/29/2016

COPYRIGHT 2015
 STEELE ASSOCIATES ARCHITECTS LLC
 All rights reserved. Reproduction or
 use in any form or by any means --
 graphic, electronic, mechanical, etc --
 without written permission of
 STEELE ASSOCIATES ARCHITECTS LLC is
 prohibited and subject to criminal prosecution.

STEELE ASSOCIATES
 ARCHITECTS LLC

760 NW YORK DRIVE, SUITE 200
 BEND, OR 97701
 541.382.9867 FAX 541.385.8816
 info@steele-arch.com

JEWELL ELEMENTARY REMODEL
 20350 MURPHY ROAD
 BEND OREGON
 ENLARGED PLUMBING DEMO PLANS

PRINTS ISSUED:	DATE:
JOB NO. 14117.01	DATE 11-21-14
DRAWN BY EPK	CHECKED BY JLT
REVISIONS APPENDIX 1	DATE 4/13/15

SHEET NO. P1.02 OF SHEETS

RECORD SET - JANUARY 29, 2016