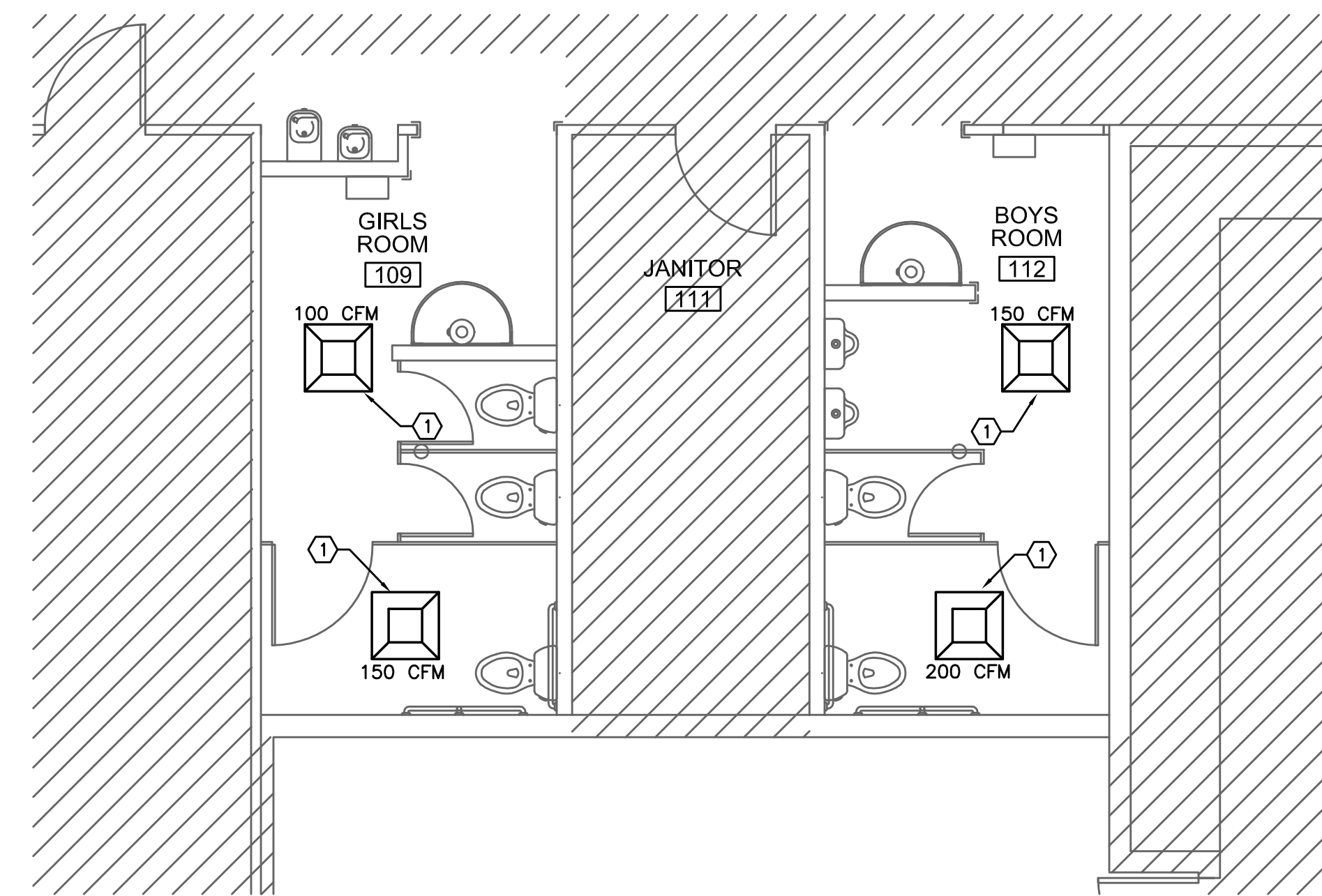
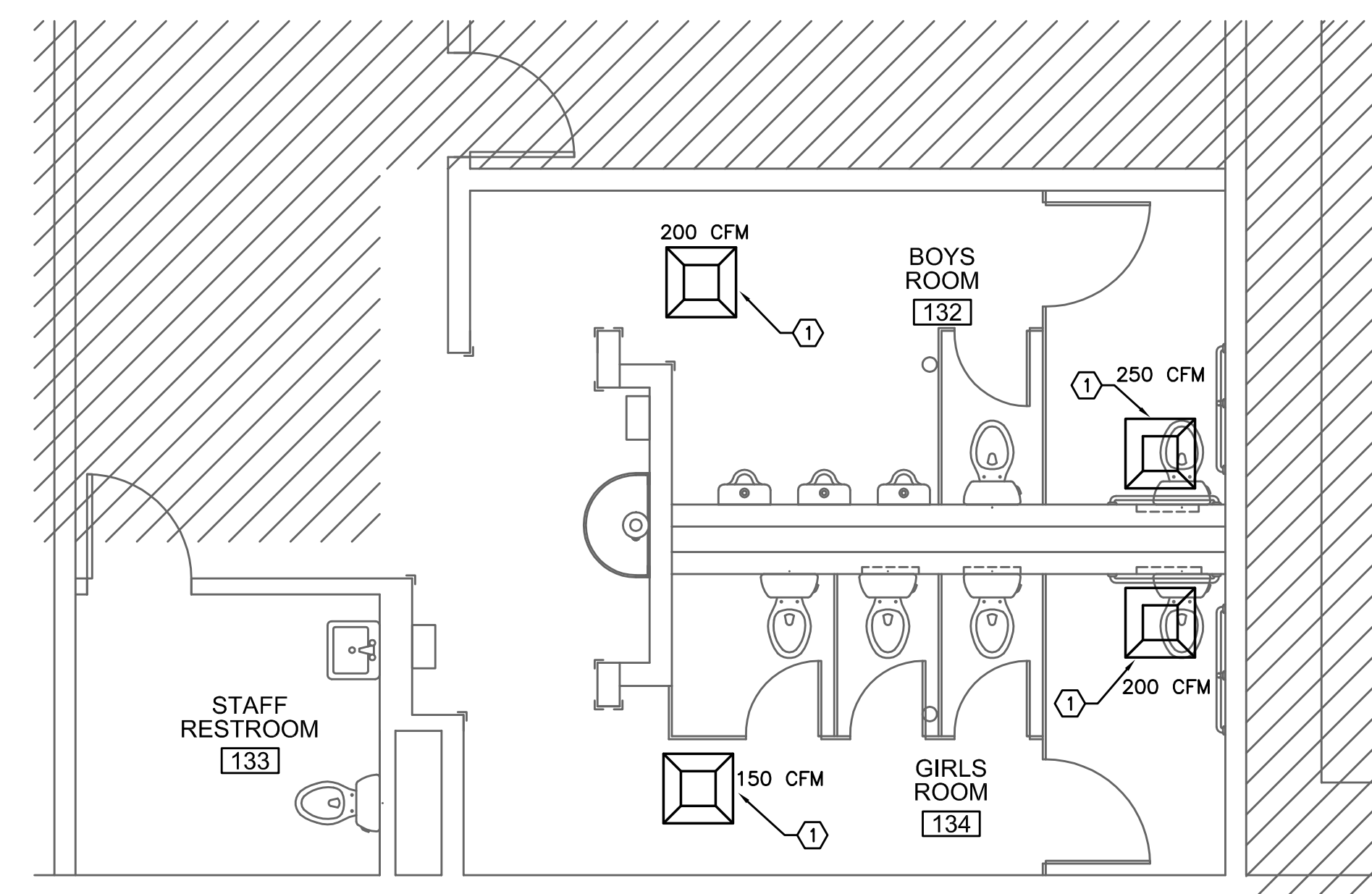


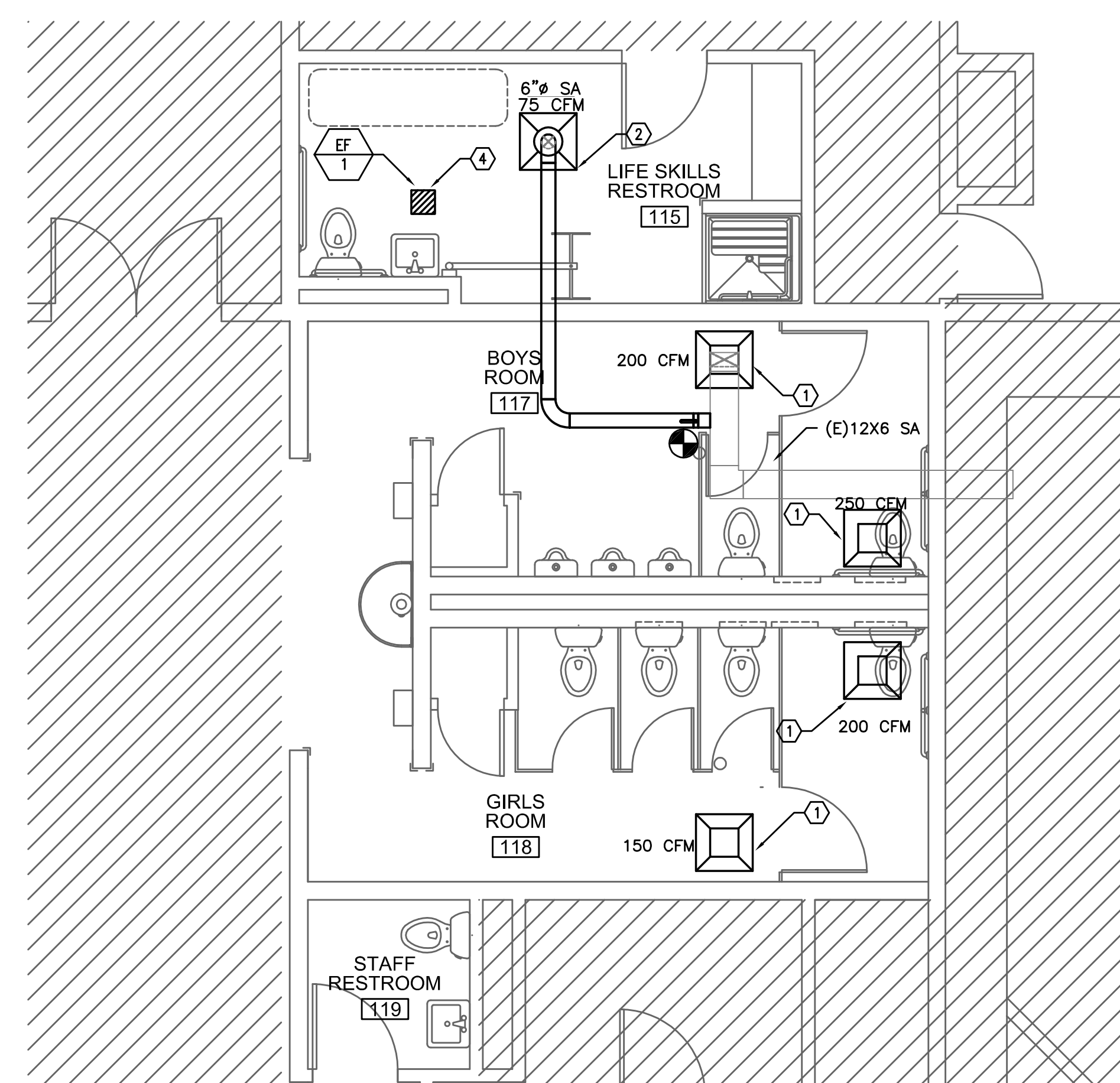
4 ENLARGED SOUTH RESTROOM MECHANICAL PLAN
M1.22 SCALE: 1/4" = 1'-0"



1 ENLARGED NORTH RESTROOM MECHANICAL PLAN
M1.22 SCALE: 1/4" = 1'-0"



2 ENLARGED WEST RESTROOM MECHANICAL PLAN
M1.22 SCALE: 1/4" = 1'-0"



3 ENLARGED EAST RESTROOM MECHANICAL PLAN
M1.22 SCALE: 1/4" = 1'-0"

GENERAL NOTES:

1. VERIFY ALL EXISTING CONDITIONS RELATIVE TO THE SCOPE OF WORK.
2. COORDINATE WORK WITH OWNER, ELECTRICAL AND ARCHITECTURAL.
3. BALANCE ALL DIFFUSERS AND GRILLES TO ORIGINAL AIR FLOWS UNLESS NOTED OTHERWISE.

KEY NOTES:

1. PROVIDE NEW SUPPLY DIFFUSER OR EXHAUST GRILLE. CONNECT TO EXISTING DUCTWORK AND BALANCE TO AIRFLOW LISTED.
2. PROVIDE NEW SUPPLY DIFFUSER AND 6" BRANCH DUCT CONNECT TO EXISTING 12X6 SUPPLY DOWN STREAM OF (E) MANUAL VOLUME DAMPER AND BALANCE TO AIRFLOW LISTED.
3. PROVIDE NEW SUPPLY DIFFUSERS OR EXHAUST GRILLE. CONNECT NEW SUPPLY TO EXISTING DUCTWORK.
4. PROVIDE EF-1 100 CFM CEILING CABINET EXHAUST FAN. CONNECT TO EXISTING 12X6 EXH AND EXISTING CONTROLS.
5. REBALANCE EXISTING LOCKER ROOM EXHAUST FAN IN FAN ROOM ABOVE.
6. REBALANCE EXISTING SUPPLY AND RETURN GRILLES FOR NEW AIR FLOWS.
7. CONNECT EXHAUST TO EXISTING 24X18 EXHAUST DUCT.
8. RELOCATED THERMOSTAT.

ADDITIVE ALTERNATE:

CLEAN EXISTING DUCT SYSTEM, COILS, AIR HANDLERS, EXHAUST FANS, ETC. UPON COMPLETION OF CLEANING, RE-BALANCE ENTIRE HVAC SYSTEM TO ORIGINAL CONDITIONS. SEE SPECIFICATIONS AND ATTACHED ORIGINAL BUILDING DRAWINGS FOR EXTENT OF WORK.

RECORD DRAWING:

THIS DRAWING HAS BEEN UPDATED TO REFLECT CHANGES MADE DURING CONSTRUCTION BASED UPON INFORMATION FURNISHED TO THE ENGINEER BY THE INSTALLATION CONTRACTOR. NO WARRANTY, EITHER EXPLICIT OR IMPLIED IS GIVEN BY MFA, INC. AS TO THE ACCURACY AND/OR COMPLETENESS OF THIS INFORMATION.

M Consulting Engineers
2007 S.E. Ash St.
Portland, OR 97214
PHN: (503) 234-0548
FAX: (503) 234-0677
INC. WWW.MFA-ENG.COM
CONTACT: JIM TORMEY

RECORD SET
1/29/2016

COPYRIGHT 2015
STEELE ASSOCIATES ARCHITECTS LLC
All rights reserved. Reproduction or
use in any form or by any means --
graphic, electronic, mechanical, etc.
-- without written permission of
STEELE ASSOCIATES ARCHITECTS LLC is
and subject to criminal prosecution.

STEELE ASSOCIATES
ARCHITECTS LLC
760 NW YORK DRIVE, SUITE 200
BEND, OR 97701
541.382.9867 FAX 541.385.8816
info@steele-arch.com

JEWELL ELEMENTARY REMODEL
20350 MURPHY ROAD
BEND OREGON
ENLARGED MECHANICAL PLANS

PRINTS ISSUED:	DATE:
JOB NO. 14117.01	DATE 11-21-14
DRAWN BY EPCG	CHECKED BY JLT
REVISIONS APPENDIX 1	DATE 4/13/15

SHEET NO.
M1.22
OF SHEETS

RECORD SET - JANUARY 29, 2016