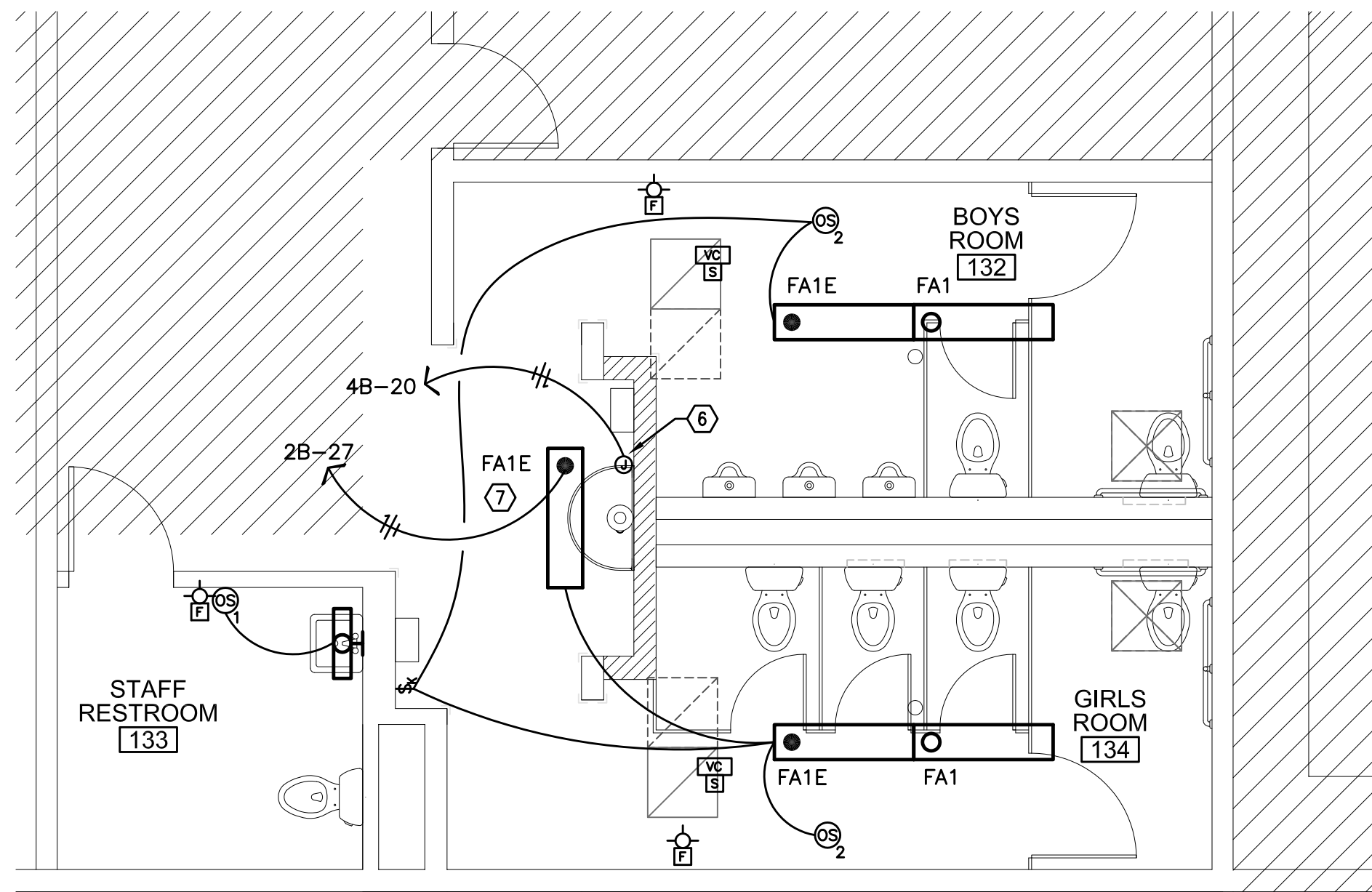
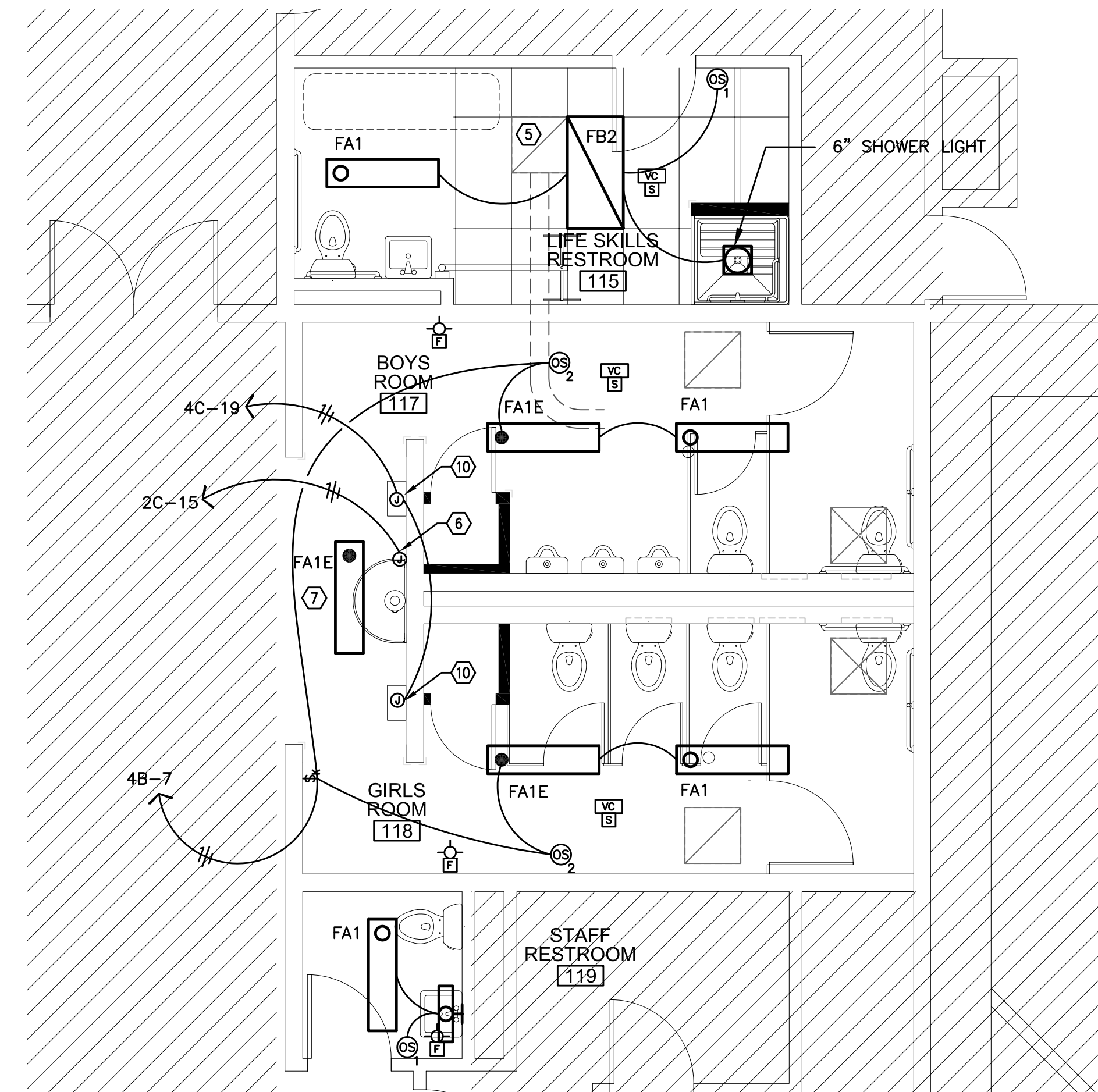


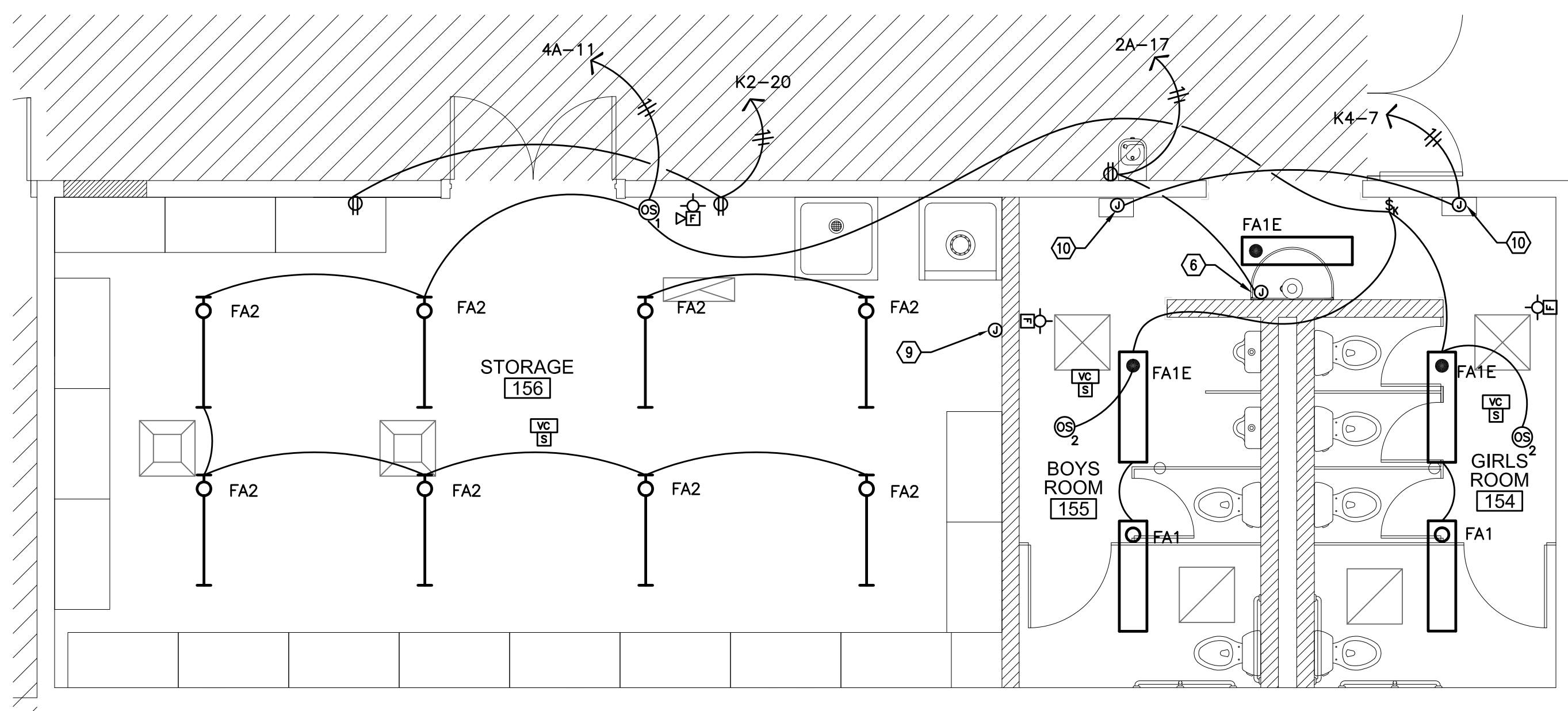
1 ENLARGED NORTH RESTROOM ELECTRICAL PLAN
E1.12 SCALE: 1/4" = 1'-0"



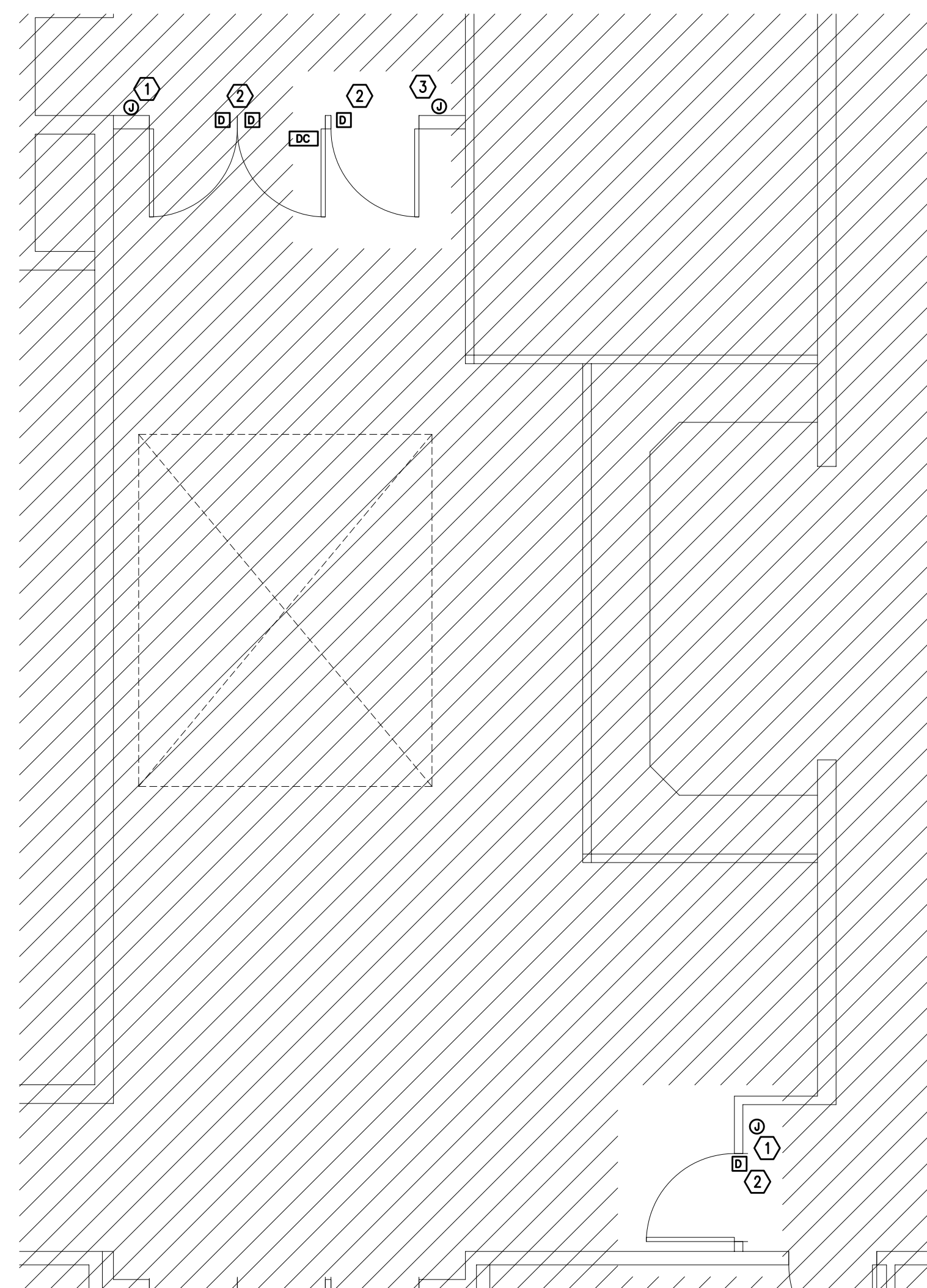
2 ENLARGED WEST RESTROOM ELECTRICAL PLAN
E1.12 SCALE: 1/4" = 1'-0"



3 ENLARGED EAST RESTROOM ELECTRICAL PLAN
E1.12 SCALE: 1/4" = 1'-0"



4 ENLARGED SOUTH RESTROOM ELECTRICAL PLAN
E1.12 SCALE: 1/4" = 1'-0"



5 SECURITY CHANGES AT MAIN ENTRY-ENLARGED PLAN
E1.12 SCALE: 1/4" = 1'-0"

GENERAL ELECTRICAL NOTES:

- A. ALL WORK SHALL BE DONE IN ACCORDANCE WITH LOCAL, STATE AND NATIONAL ELECTRICAL CODE REQUIREMENTS.
- B. THE ELECTRICAL CONTRACTOR SHALL BE RESPONSIBLE FOR VERIFYING EXISTING CONDITIONS PRIOR TO THE START OF ANY WORK, INCLUDING THE LOCATION OF ANY ELECTRICAL PANELS AND SWITCH GEAR, AND REPORT ANY DISCREPANCIES TO THE ARCHITECT IMMEDIATELY.
- C. ELECTRICAL DEVICES AND LIGHT FIXTURES SHALL BE IN ACCORDANCE WITH THE SCHOOL DISTRICT'S PRODUCT STANDARDS.
- D. LIGHT FIXTURES SALVAGED FROM DEMOLITION THAT ARE IN GOOD CONDITION MAY BE REUSED IN LIEU OF NEW FIXTURES. CONSULT ARCHITECT TO DETERMINE WHICH FIXTURES ARE TO BE REUSED AND WHERE. SALVAGED FIXTURES SHALL BE CLEANED AND RELAMPED PRIOR TO RE-INSTALLATION.
- E. CONTRACTOR SHALL TAKE NOTE OF EXISTING LIGHT FIXTURE LOCATIONS PRIOR TO AREA REMODEL AND SHALL INSTALL/RE-INSTALL LIGHT FIXTURES SUCH THAT EXISTING JUNCTION BOXES ARE USED WHEREVER POSSIBLE TO MINIMIZE THE NEED FOR CUTTING, PATCHING AND REPAINTING OF THE CEILING SURFACES.
- F. COORDINATE WITH THE MECHANICAL CONTRACTOR FOR RECONNECTION OF ANY MECHANICAL EQUIPMENT TO BE REPLACED.
- G. COORDINATE WITH THE MECHANICAL CONTRACTOR FOR POWER REQUIREMENTS AND LOCATION OF ANY NEW MECHANICAL EQUIPMENT TO BE INSTALLED AS PART OF THIS PROJECT PRIOR TO ROUGH-IN.
- H. CONTRACTOR TO PROVIDE AND INSTALL ELECTRONIC DOOR LOCKS AT THE OFFICE ENTRY DOOR AND THE MAIN INTERIOR TRIPLE DOOR. RELEASE TO BE BY PHONE ACTUATED SYSTEM AT RECEPTION DESK AND OFFICE MANAGER'S OFFICE. CONSULT ARCHITECT FOR EXACT LOCATIONS, PREFERRED PRODUCTS AND MOUNTING HEIGHTS PRIOR TO ROUGH IN. THE INTO NEAREST 20A, 120V RECEPTACLE CIRCUIT WITH AVAILABLE CAPACITY.

ELECTRICAL SHEET NOTES:

- ① PROVIDE (2) CATEGORY 6 CABLES FROM FUTURE CARD READER LOCATION TO CLOSEST IDF/MDF COIL AND LABEL FOR DISTRICT USE.
- ② PROVIDE A SINGLE CATEGORY 6 CABLE FROM DOOR POSITION SENSORS TO CLOSEST IDF/MDF COIL AND LABEL FOR DISTRICT USE.
- ③ PROVIDE (2) CATEGORY 6 CABLE FROM INTERCOM LOCATION TO CLOSEST IDF/MDF COIL AND LABEL FOR DISTRICT USE.
- ④ PROVIDE (2) CATEGORY 6 CABLE FROM DOOR CONTROLLER LOCATION TO CLOSEST IDF/MDF COIL AND LABEL FOR DISTRICT USE.
- ⑤ CONTRACTOR TO DISCONNECT EXISTING EXHAUST FAN FOR REPLACEMENT. COORDINATE WITH MECHANICAL CONTRACTOR FOR RECONNECTION OF POWER TO NEW EXHAUST FAN.
- ⑥ PROVIDE (1) 20A, 120V, 1P CIRCUIT FROM NEAREST BRANCH PANEL WITH AVAILABLE CAPACITY, FOR HAND WASH SINK POWER. COORDINATE WITH PLUMBING INSTALLER FOR EXACT LOCATION AND POWER REQUIREMENTS.
- ⑦ REPLACE EXISTING LIGHT FIXTURE WITH NEW TYPE FA1. CONNECT TO EXISTING LIGHT CIRCUIT. NEW FIXTURE SHALL BE PROVIDED WITH EMERGENCY BATTERY BACK UP. REFER TO LIGHT FIXTURE SCHEDULE ON SHEET E0.01 FOR ADDITIONAL INFORMATION.
- ⑧ NOT USED.
- ⑨ PROVIDE (1) 20A, 120V, 1P CIRCUIT FROM NEAREST BRANCH PANEL WITH AVAILABLE CAPACITY, FOR TRAP PRIMER. COORDINATE WITH PLUMBING INSTALLER FOR EXACT LOCATION AND POWER REQUIREMENTS.
- ⑩ PROVIDE (1) 20A, 120V, 1P CIRCUIT FROM NEAREST BRANCH PANEL WITH AVAILABLE CAPACITY, FOR HAND DRYER POWER.

RECORD DRAWING:

THIS DRAWING HAS BEEN UPDATED TO REFLECT CHANGES MADE DURING CONSTRUCTION BASED UPON INFORMATION FURNISHED TO THE ENGINEER BY THE INSTALLATION CONTRACTOR. NO WARRANTY EITHER EXPLICIT OR IMPLIED IS GIVEN BY MFTA, INC. AS TO THE ACCURACY AND/OR COMPLETENESS OF THIS INFORMATION.

MFTA Consulting Engineers
2007 S.E. Ash St.
Portland, OR 97214
PH: (503) 234-0548
FAX: (503) 234-0577
INC. WWW.MFTA-ENG.COM
CONTACT:

RECORD SET
1/29/2016

COPYRIGHT 2015
STEELE ASSOCIATES ARCHITECTS LLC
All rights reserved. Reproduction or
use in any form or by any means --
graphic, electronic, mechanical, etc.
-- without written permission of
STEELE ASSOCIATES ARCHITECTS LLC is
subject to criminal prosecution.

STEELE ASSOCIATES
ARCHITECTS LLC
760 NW YORK DRIVE, SUITE 200
BEND, OR 97701
541.382.9867 FAX 541.385.8816
info@steele-arch.com

JEWELL ELEMENTARY REMODEL
20350 MURPHY ROAD
BEND OREGON
ELECTRICAL ENLARGED PLANS

PRINTS ISSUED:	DATE:
JOB NO. 14117.01	DATE 11-21-14
DRAWN BY CMH	CHECKED BY RL C
REVISIONS APPENDIX 1	DATE 4/13/15

SHEET NO.
E1.12
OF SHEETS