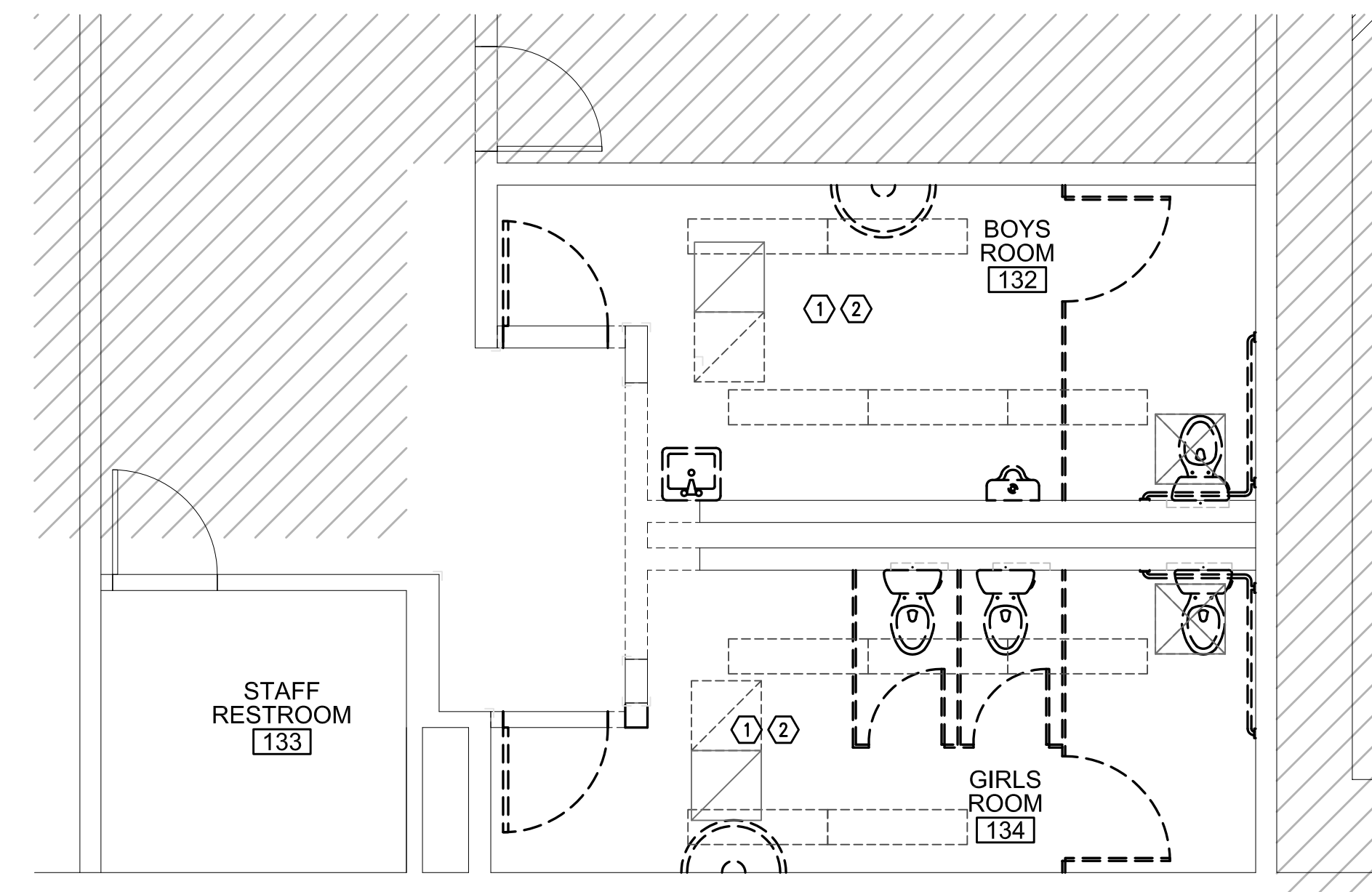
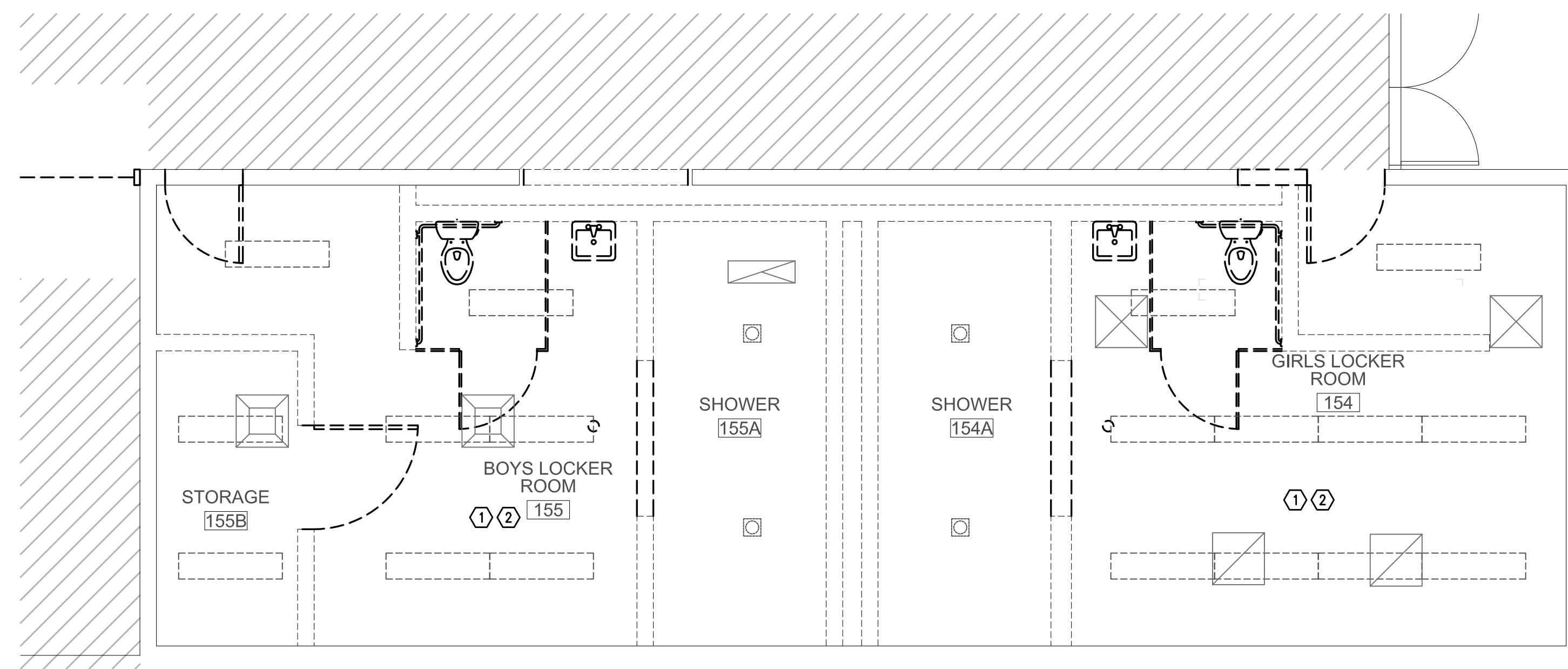


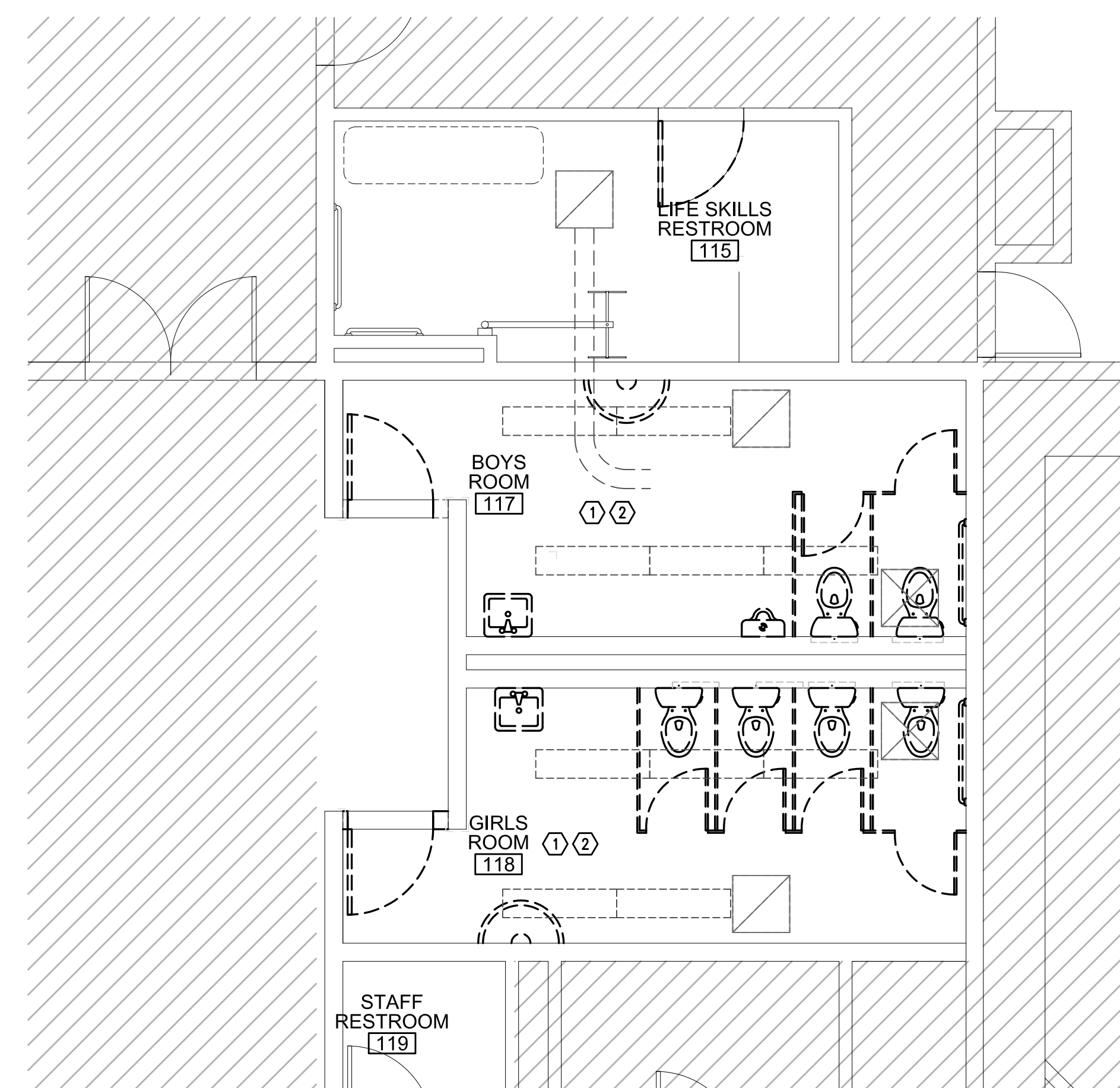
1 ENLARGED NORTH RESTROOM DEMO PLAN
 E1.02 SCALE: 1/4" = 1'-0"



2 ENLARGED WEST RESTROOM DEMO PLAN
 E1.02 SCALE: 1/4" = 1'-0"



4 ENLARGED SOUTH RESTROOM DEMO PLAN
 E1.02 SCALE: 1/4" = 1'-0"



3 ENLARGED EAST RESTROOM DEMO PLAN
 E1.02 SCALE: 1/4" = 1'-0"

GENERAL DEMOLITION NOTES:

- A. UNLESS OTHERWISE NOTED, REMOVE ALL ELECTRICAL DEVICES AND ASSOCIATED ITEMS IN CONFLICT WITH NEW CONSTRUCTION. MODIFY CIRCUITING AS REQUIRED TO MAINTAIN FEED TO DOWNSTREAM DEVICES OR FIXTURES TO REMAIN.
- B. COORDINATE WITH THE MECHANICAL CONTRACTOR FOR DISCONNECTION/RECONNECTION OF ANY AND ALL MECHANICAL EQUIPMENT TO BE REMOVED OR REPLACED.
- C. CONSULT WITH ARCHITECT TO DETERMINE WHICH LIGHT FIXTURES ARE TO BE SALVAGED FOR REUSE.

DEMOLITION SHEET NOTES:

- 1 REMOVE EXISTING ELECTRICAL DEVICES AND MAINTAIN CIRCUITS FOR REUSE.
- 2 DISCONNECT POWER TO MECHANICAL EQUIPMENT TO BE REMOVED AND/OR REPLACED. MAINTAIN EXISTING CIRCUIT CONDUCTORS FOR RECONNECTION OF REPLACED EQUIPMENT. CONDUCTORS FEEDING EQUIPMENT TO BE REMOVED IN ITS ENTIRETY. SHALL BE REMOVED AS FAR BACK TO THE SOURCE AS POSSIBLE AND DISCONNECTED FROM THE BRANCH PANEL SERVES THAT CIRCUIT.

RECORD DRAWING:
 THIS DRAWING HAS BEEN UPDATED TO REFLECT CHANGES MADE DURING CONSTRUCTION BASED UPON INFORMATION FURNISHED TO THE ENGINEER BY THE INSTALLATION CONTRACTOR. NO WARRANTY EITHER EXPLICIT OR IMPLIED IS GIVEN BY MFA, INC. AS TO THE ACCURACY AND/OR COMPLETENESS OF THIS INFORMATION.

MFA Consulting Engineers
 2007 S.E. Ash St.
 Portland, OR 97214
 PHN: (503) 234-0548
 FAX: (503) 234-0877
 INC. WWW.MFA-ENG.COM
 CONTACT:

RECORD SET
 1/29/2016

COPYRIGHT 2015
 STEELE ASSOCIATES ARCHITECTS LLC
 All rights reserved. Reproduction or
 use in any form or by any means --
 graphic, electronic, mechanical, etc --
 without written permission of
 STEELE ASSOCIATES ARCHITECTS LLC is
 prohibited and subject to criminal prosecution.

9/8/2015

STEELE ASSOCIATES
 ARCHITECTS LLC
 760 NW YORK DRIVE, SUITE 200
 BEND, OR 97701
 541.382.9867 FAX 541.385.8816
 info@steele-arch.com

JEWELL ELEMENTARY REMODEL
 20350 MURPHY ROAD
 BEND OREGON
 ELECTRICAL DEMOLITION ENLARGED PLANS

PRINTS ISSUED:	DATE:
JOB NO. 14117.01	DATE 11-21-14
DRAWN BY DMT	CHECKED BY RL C
REVISIONS APPENDIX 1	DATE 4/13/15

SHEET NO.
E1.02
 OF SHEETS

RECORD SET - JANUARY 29, 2016