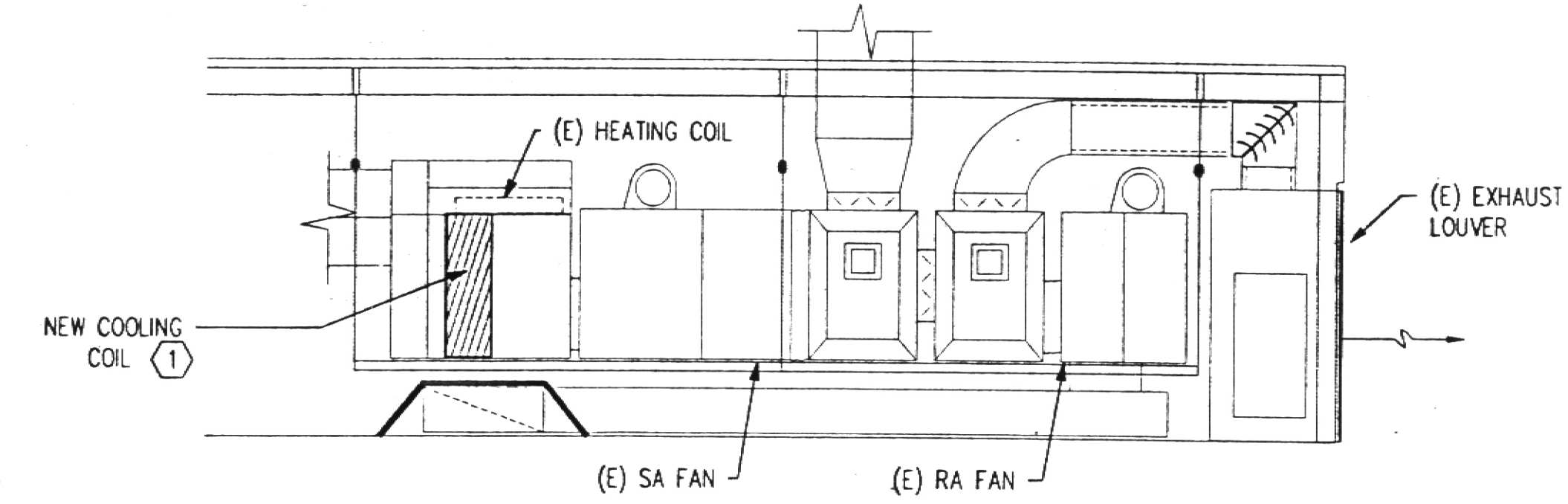
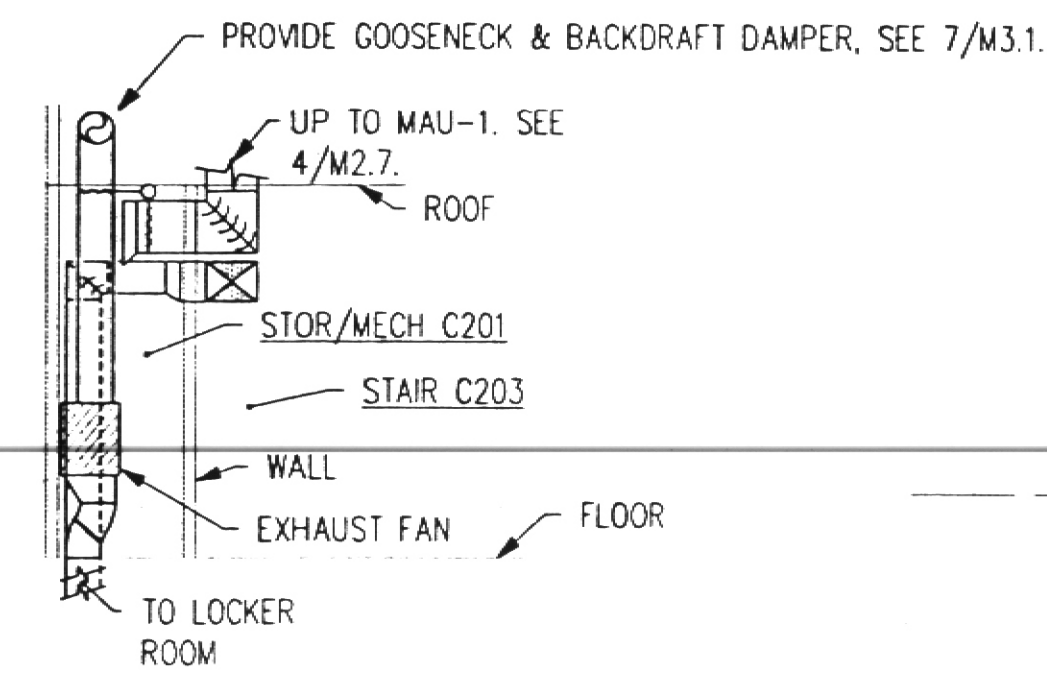


NOTES THIS SHEET:

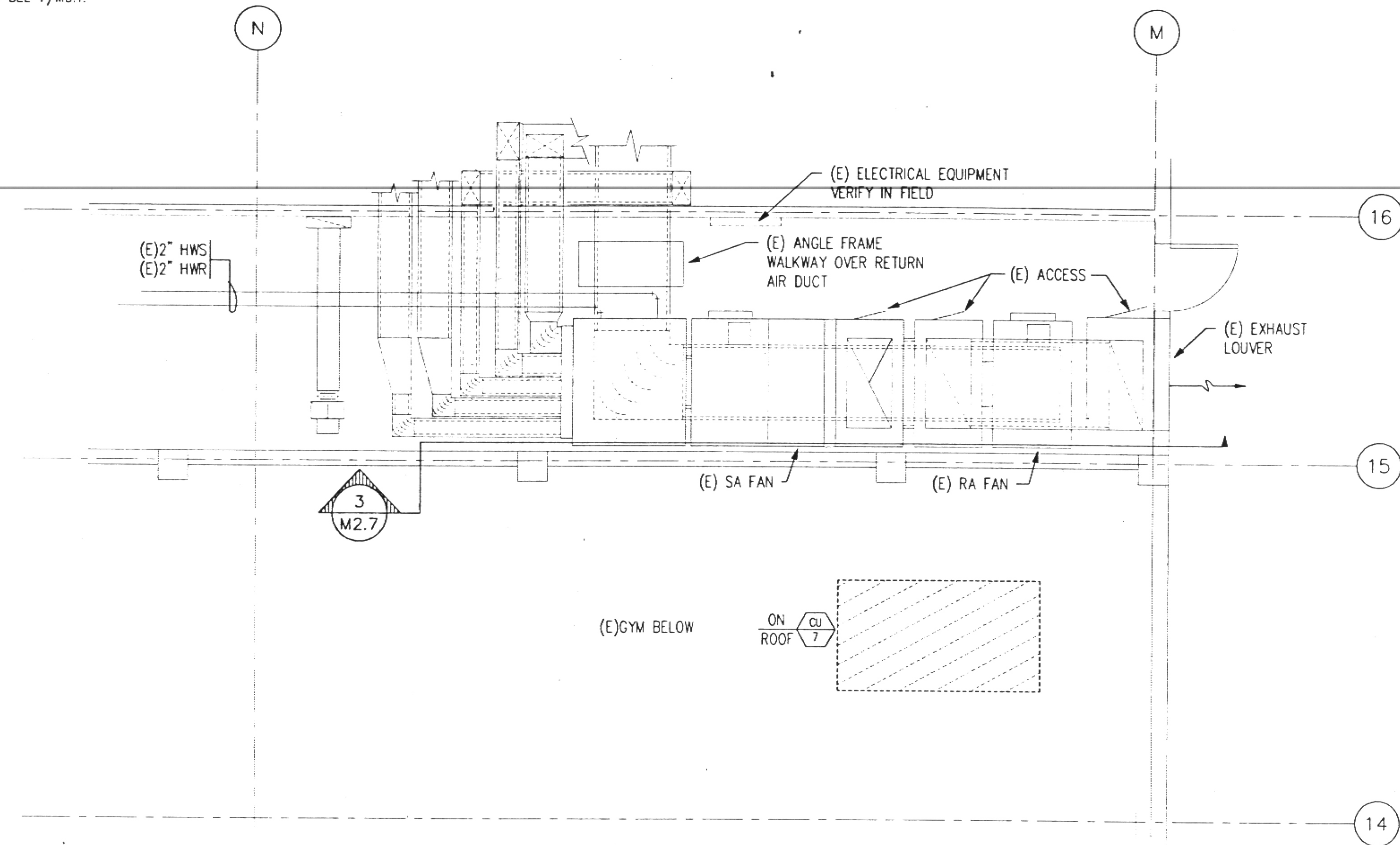
1. INSTALL NEW DX COOLING AT
(E) MULTIZONE UNIT AS REQUIRED.
TOTAL COOLING CAPACITY OF
334,992 BTUH AND SENSIBLE OF
223,474 BTUH AT 80db/67wb ENT.
AIR. FACE VELOCITY OF 470.4 FPM
MAX AIR PRESS. DROP OF 0.54" WC
AT 8100 TOTAL CFM. MAX. DX COIL
SIZE OF 43.5"x57", 3 ROWS W/12FPI.
AIR. FACE VELOCITY OF 470.4 FPM
REFRIGERANT SUCTION TEMP. OF 40 DEG. F
USING R22. ROUTE REFRIGERANT PIPING
TO CU-7 ON ROOF. VERIFY EXACT CONDITIONS
IN FIELD.



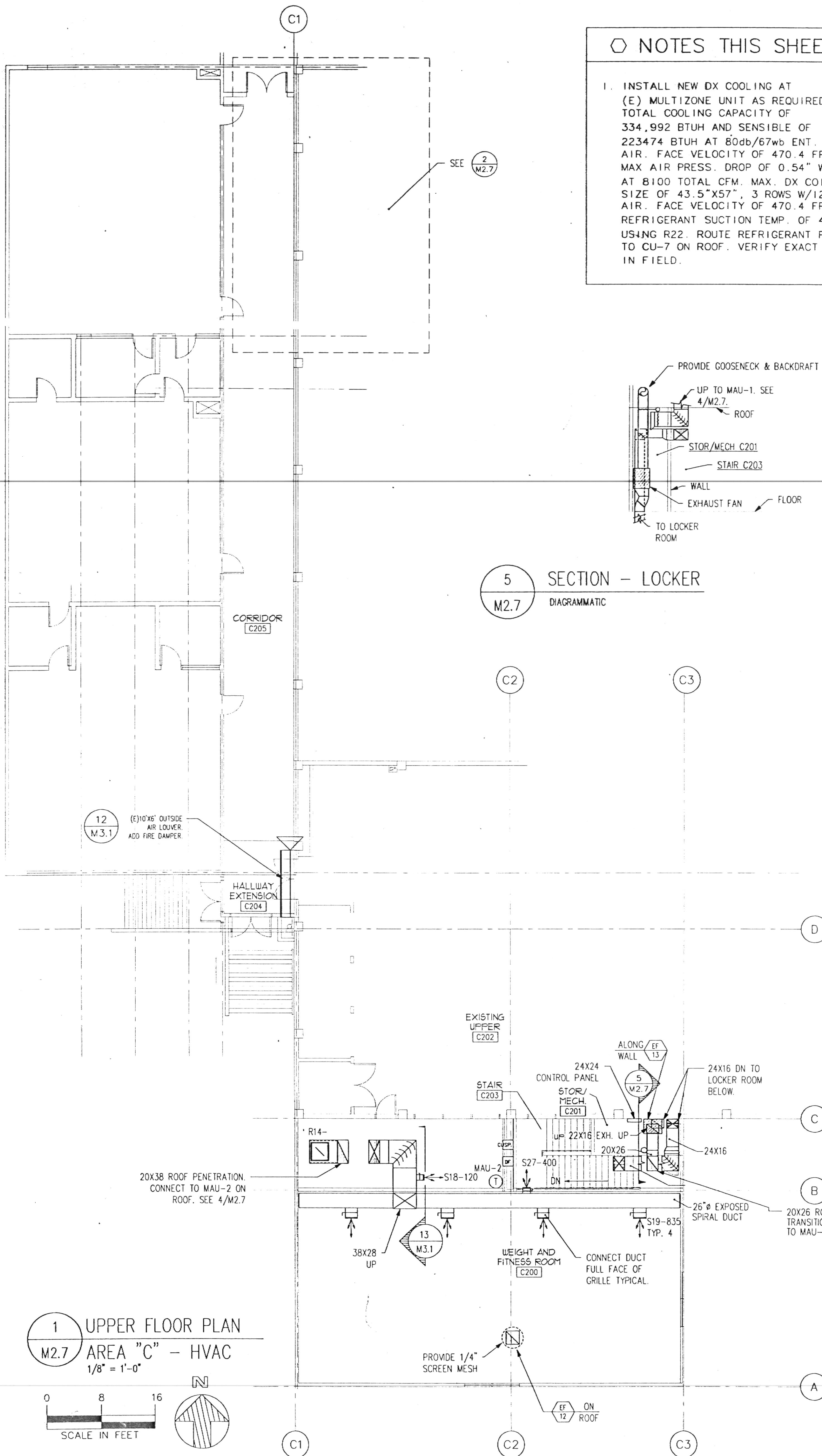
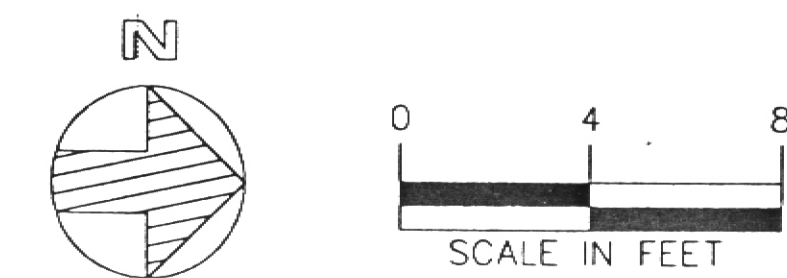
3 SECTION SHOP CLASSROOM MECHANICAL ROOM
1/4" = 1'-0"



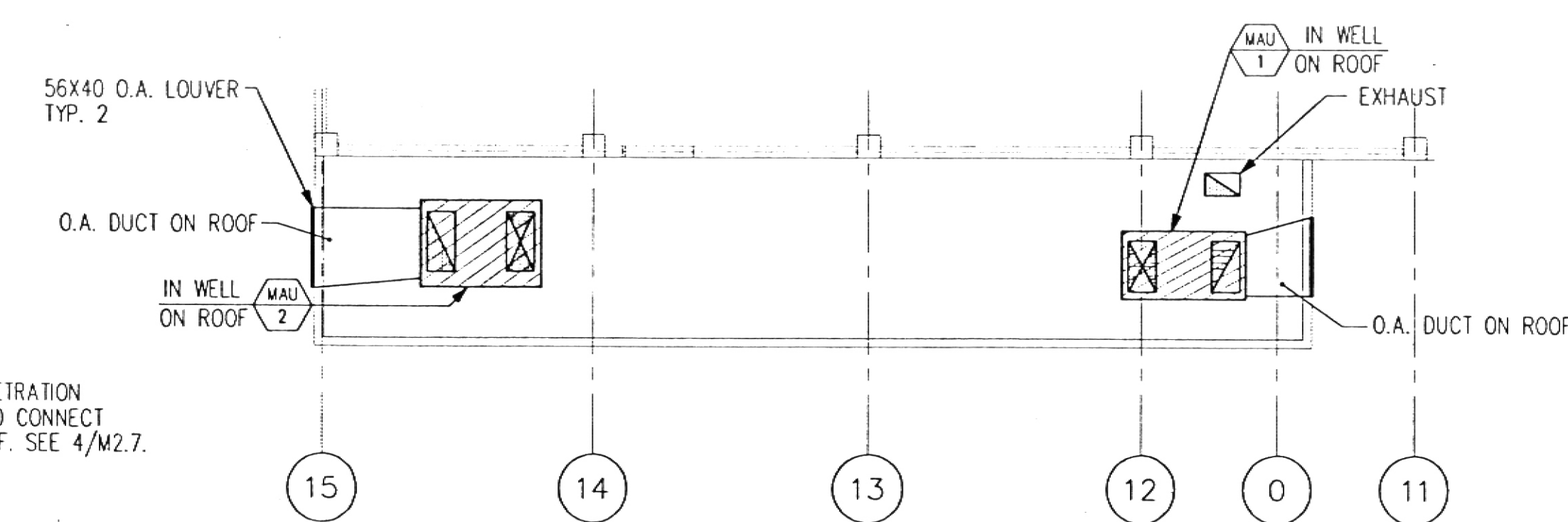
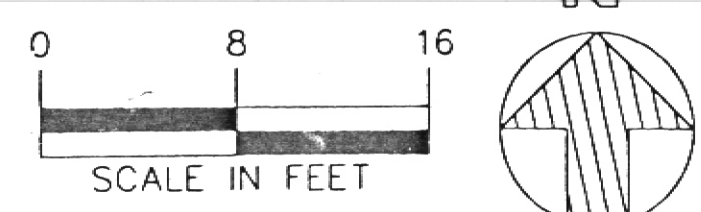
5 SECTION - LOCKER
DIAGRAMMATIC
M2.7



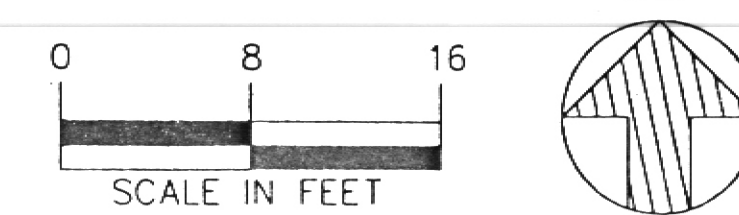
2 SHOP CLASSROOM MECHANICAL ROOM
1/4" = 1'-0"



1 UPPER FLOOR PLAN
AREA "C" - HVAC
1/8" = 1'-0"

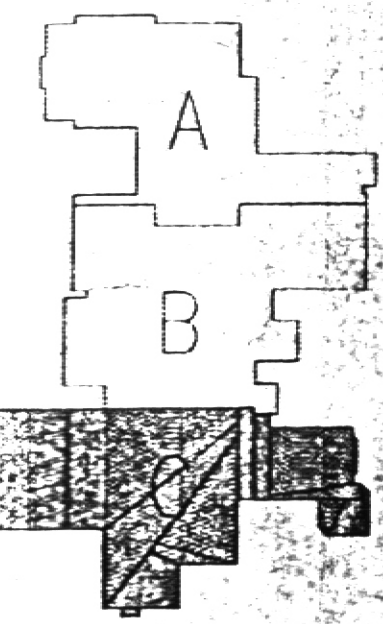


4 WELL PLAN AREA "C" - HVAC
1/8" = 1'-0"



NOTE:

ALL EXISTING PIPING, DUCTWORK, EQUIPMENT, ETC.
WERE TAKEN FROM EXISTING AVAILABLE RECORD
DRAWINGS. CONTRACTOR TO VERIFY EXACT
CONDITIONS IN THE FIELD.



SHERWOOD
SCHOOL
DISTRICT 88J

400 NORTH SHERWOOD BLVD.
SHERWOOD, OR 97140
(503) 625-8100



DULL OLSON WEEKES
ARCHITECTS

319 SW WASHINGTON ST., NO. 200
PORTLAND, OR 97204
(503) 226-8950
FAX (503) 273-1192

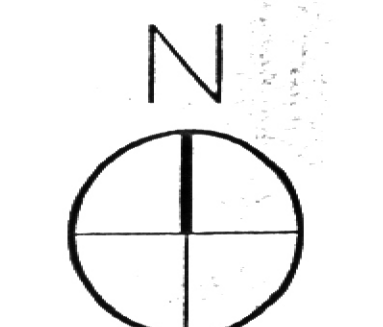
DATE 12/14/95

JOB # 94037/9519

DRAWN BY EJL

CHECKED BY

REVISIONS



1/8" = 1'-0"
UPPER FLOOR
PLAN AREA "C"
HVAC
M2.7

113 pm
PLOT DATE: 12/13/95
This document is a copy of
the original document. The original
document is on file at Accipio, Inc.
Accipio Inc.
4120 SE INTERNATIONAL WAY
SUITE 2213
WILMINGTON, OR 97122
(503) 652-9554
PROJ # 9519