

SAVANA STUDIO USA  
100 East 13th Street  
Suite 20  
Vancouver WA 98660  
(360) 600-0042

ZACHARY E. RAY  
ARCHITECT  
P.O. Box 66428 Portland, Oregon 97290-6428  
Ph: 503-112-4235 Email: zearcht@gmail.com

for: FOODLANDIA LLC  
Mr. Omar Ghassan  
6819 SE Madison Street  
Hillsboro, Oregon 97123

FOODLANDIA  
2635 SE CENTURY BLVD.  
Hillsboro, Oregon 97123

ACCESSORY BLDG  
POWER & LIGHTING  
PLANS

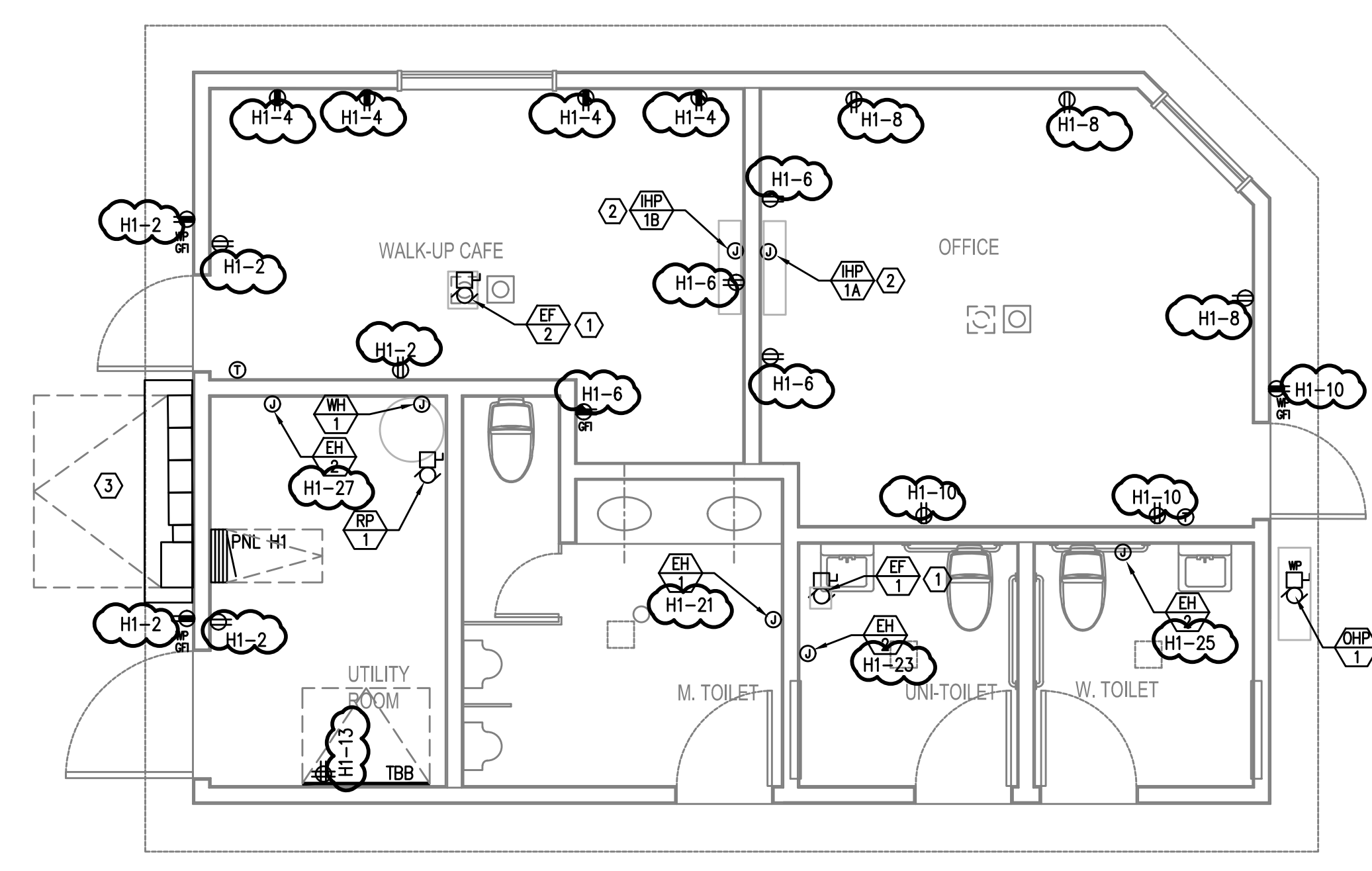
REV.	DATE	DESCRIPT.
△	01.11.2022	REVIEW COMMENTS



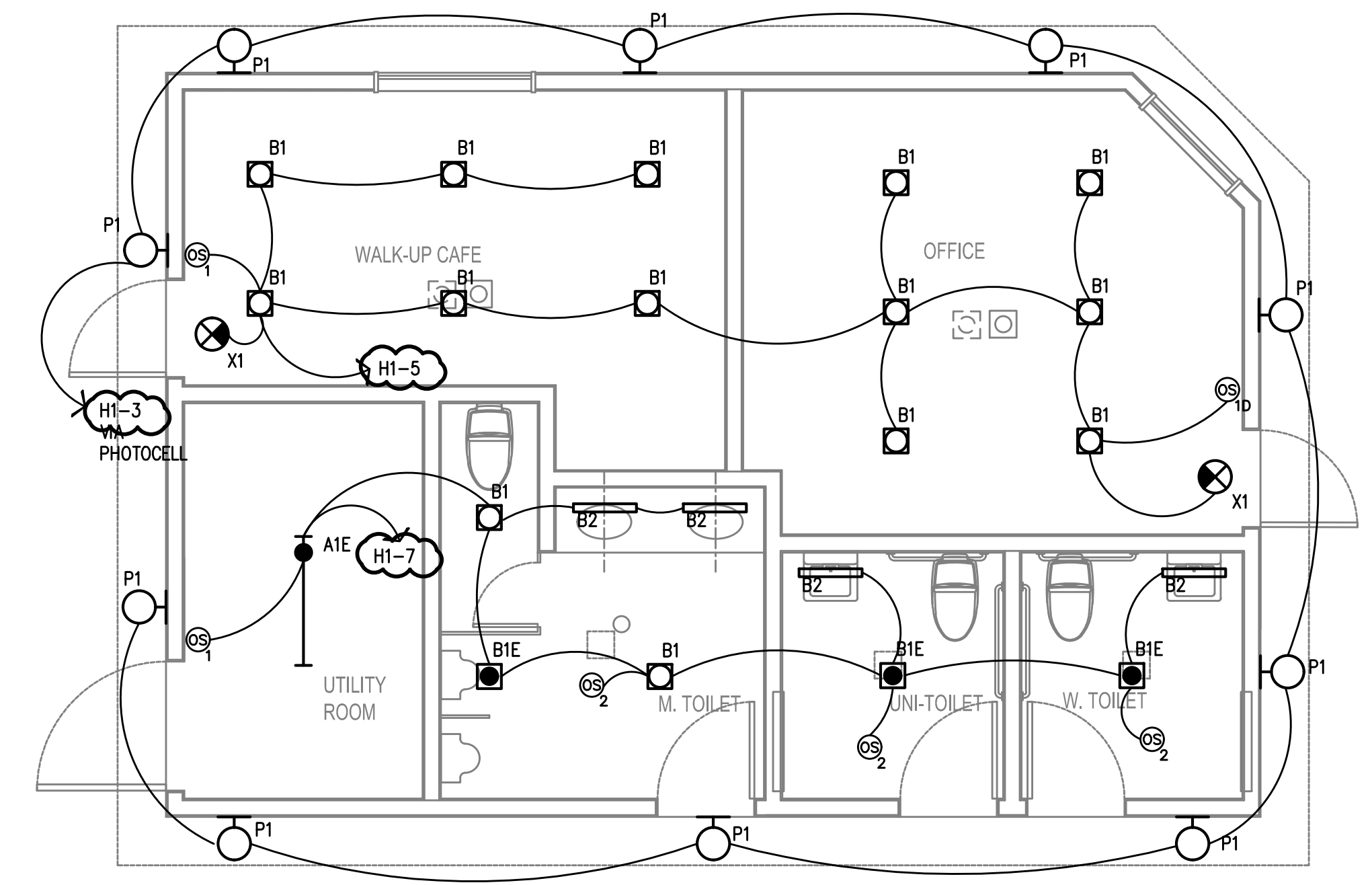
**MFA** Consulting Engineers  
2007 S.E. Ash St.  
Portland, OR 97214  
PHN: (503) 234-0548  
FAX: (503) 234-0677  
WWW.MFIA-ENG.COM  
CONTACT: MFIA

E2.0

Drawn by: DMT  
March 8, 2021



1 ACCESSORY BUILDING - POWER PLAN  
E2.0 SCALE: 1/4" = 1'-0"



2 ACCESSORY BUILDING - LIGHTING PLAN  
E2.0 SCALE: 1/4" = 1'-0"

GENERAL NOTES:

- A. ELECTRICAL DRAWINGS ARE DIAGRAMMATICAL AND MAY NOT ACCURATELY REFLECT ACTUAL CONSTRUCTION CONDITIONS. THE ELECTRICAL CONTRACTOR SHALL BE RESPONSIBLE FOR COORDINATING THE INSTALLATION OF ALL ELECTRICAL EQUIPMENT, WITH ALL TRADES PRIOR TO AND DURING CONSTRUCTION.
- B. WORK SHALL BE IN ACCORDANCE WITH ALL APPLICABLE LOCAL, STATE AND NATIONAL CODES.
- C. THE ELECTRICAL CONTRACTOR SHALL REFER TO THE ARCHITECTURAL DRAWINGS FOR ALL MOUNTING HEIGHTS AND FINISHES OF DEVICES AND FIXTURES.
- D. COORDINATE WITH DIVISION 23 FOR EXACT LOCATION AND POWER REQUIREMENTS OF ALL MECHANICAL EQUIPMENT PRIOR TO ROUGH IN. REFER TO SHEET E0.0 FOR MECHANICAL EQUIPMENT SCHEDULE.
- E. THE ELECTRICAL CONTRACTOR SHALL REFER TO THE MECHANICAL PLAN SHEETS AND COORDINATE WITH THE MECHANICAL INSTALLER TO AVOID CONFLICTS BETWEEN HVAC EQUIPMENT AND LIGHT FIXTURES WITHIN THE APARTMENT UNITS.
- F. ELECTRICAL CONTRACTOR SHALL PROVIDE INSTALLATION AND FINAL CONNECTION OF THERMOSTATS AS REQUIRED. CONSULT MECHANICAL CONTRACTOR FOR EXACT REQUIREMENTS PRIOR TO ROUGH IN. VERIFY THAT THE MECHANICAL CONTRACTOR PROVIDES THE THERMOSTAT THEY SPECIFY IN THEIR PROJECT DOCUMENTS.
- G. FIRE ALARM & DETECTION SYSTEMS ARE TO BE DESIGNED AND INSTALLED BY OTHERS. THE ELECTRICAL CONTRACTOR SHALL COORDINATE WITH THE FIRE ALARM SYSTEM DESIGNER FOR EXACT LOCATIONS AND PROVIDE ROUGH IN ONLY.
- H. LOW VOLTAGE SYSTEMS ARE TO BE DESIGNED AND INSTALLED BY OTHERS. THE ELECTRICAL CONTRACTOR SHALL COORDINATE WITH THE SERVICE PROVIDER FOR EXACT LOCATIONS AND PROVIDE ROUGH IN ONLY.
- I. REFER TO SHEET E0.0 FOR LIGHT FIXTURE SCHEDULE.
- J. ALL LIGHT SWITCHES SHALL BE ROCKER STYLE, SUCH AS LEVITON DECORA, OR APPROVED EQUAL.
- K. BUILDING MOUNTED EXTERIOR LIGHTS SHALL BE CIRCUITED AS INDICATED, VIA ROOF MOUNTED OR INTEGRAL PHOTOCELL FOR DUSK-TILL-DAWN OPERATION, UNLESS OTHERWISE NOTED.

KEYED NOTES:

- 1. EXHAUST FAN TO BE TIED INTO THE LIGHT SWITCH IN THAT SPACE.
- 2. INTERIOR HVAC UNIT TO BE MOUNTED AT MECHANICAL EQUIPMENT INSTALLER FOR
- 3. PROVIDE A NEMA 3R CABINET FOR THE UTILITY PROVIDER'S REQUIREMENTS.