

SAVANA STUDIO USA  
100 East 13th Street  
Suite 20  
Vancouver WA 98660  
(360) 600-0042

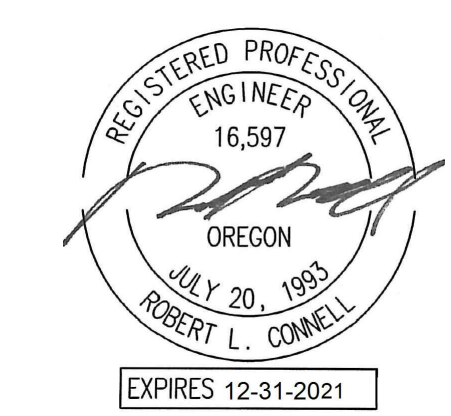
ZACHARY E. RAY  
ARCHITECT  
P.O. Box 66428 Portland, Oregon 97290-6428  
Ph: 503-112-4235 Email: zeararch@gmail.com

for: FOODLANDIA LLC  
Mr. Omar Ghassan  
6819 SE Madison Street  
Hillsboro, Oregon 97123

FOODLANDIA  
2635 SE CENTURY BLVD.  
Hillsboro, Oregon 97123

SITE  
POWER PLAN

REV.	DATE	DESCRIPT.
△	01.11.2022	REVIEW COMMENTS

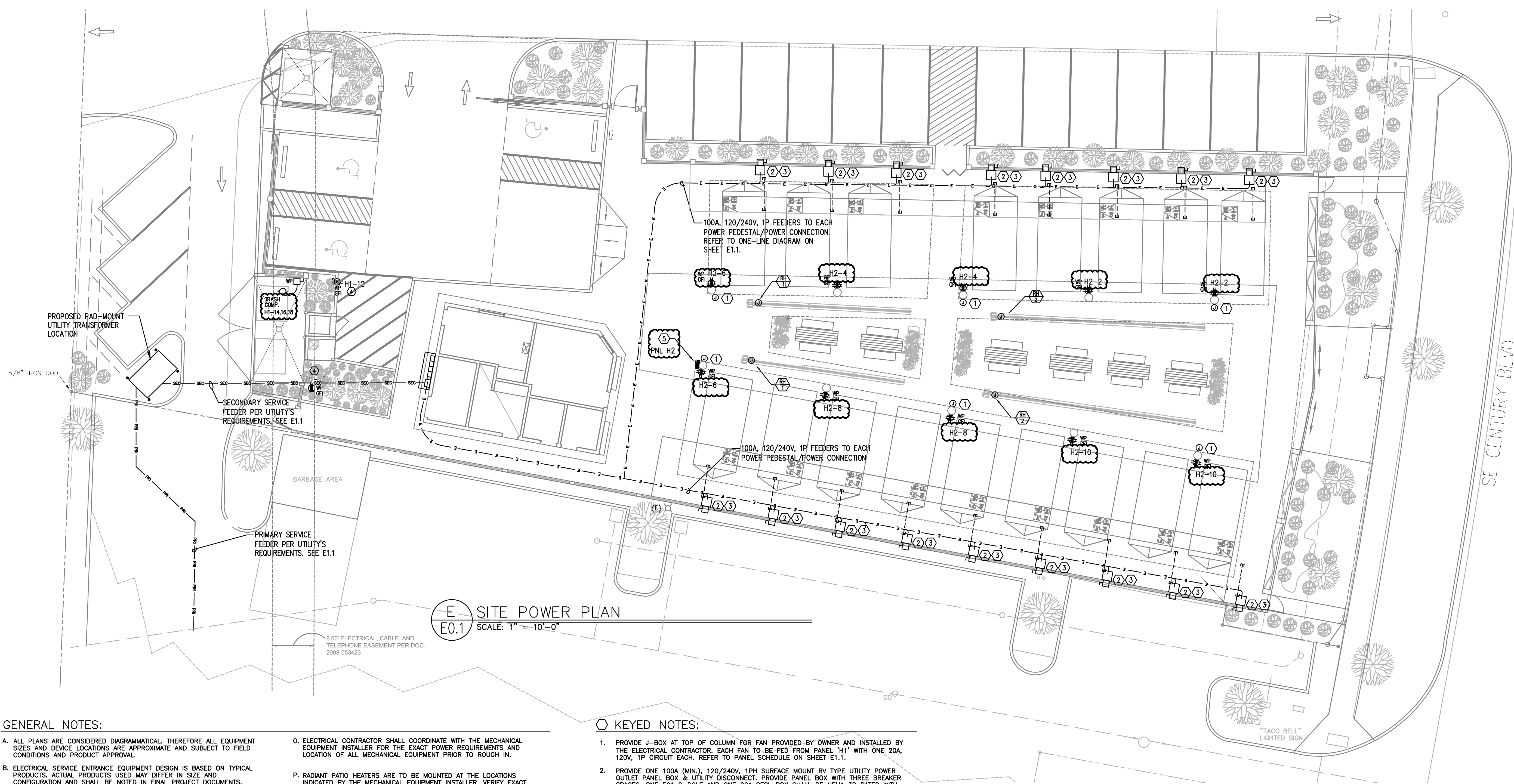


MEDIA CONSULTING ENGINEERS  
2007 S.E. Ash St  
Portland, OR 97214  
PHN: (503) 234-0548  
FAX: (503) 234-0677  
CONTACT: MFIA

E0.1

Drawn by: DMT

March 8, 2021



E SITE POWER PLAN  
E0.1 SCALE: 1" = 10'-0"

GENERAL NOTES:

- A. ALL PLANS ARE CONSIDERED DIAGRAMMATICAL, THEREFORE ALL EQUIPMENT SIZES AND DEVICE LOCATIONS ARE APPROXIMATE AND SUBJECT TO FIELD CONDITIONS AND PRODUCT APPROVAL.
- B. ELECTRICAL SERVICE ENTRANCE EQUIPMENT DESIGN IS BASED ON TYPICAL PRODUCTS. ACTUAL PRODUCTS USED MAY DIFFER IN SIZE AND CONFIGURATION AND SHALL BE NOTED IN FINAL PROJECT DOCUMENTS.
- C. COORDINATE WITH LOCAL UTILITY PROVIDER FOR EXACT SERVICE CONDUIT AND CONDUCTORS REQUIREMENTS.
- D. ALL UTILITY WORK SHALL BE DONE IN ACCORDANCE WITH PGE ELECTRICAL SERVICE REQUIREMENTS.
- E. U.G. PRIMARY FEEDER SHALL HAVE A MINIMUM 48 INCH BURY.
- F. U.G. SECONDARY FEEDER SHALL HAVE A MINIMUM 36 INCH BURY.
- G. REFER TO SHEET E1.1 FOR TYPICAL FEEDER SCHEDULE.
- H. SECONDARY CONDUIT SWEEPS SHALL BE MINIMUM 60 INCH RADIUS WITH A MINIMUM OR 7'-0" STRAIGHT CONDUIT RUN BETWEEN SWEEPS.
- I. LOCATION AND INSTALLATION OF THE PRIMARY AND SECONDARY CONDUITS, TRANSFORMER, ETC. SHALL BE PROVIDED PER PGE ELECTRICAL SERVICE REQUIREMENTS.
- J. REFER TO SHEET E2.0 FOR ELECTRICAL EQUIPMENT LAYOUT.
- K. CUSTOMER TO PROVIDE ALL TRENCHING AND BACKFILLING. TRENCH TO BE 36 INCHES DEEP AND 30 INCHES WIDE, MEASURED FROM FINAL GRADE.
- L. UTILITY PROVIDER'S CONDUCTORS TO BE INSTALLED IN GRAY SCHEDULE 40, ELECTRICAL GRADE, PVC CONDUIT WITH NYLON PULL STRINGS (MIN 500 LBS. TEST). UTILITY PROVIDER TO DETERMINE THE SIZE AND NUMBER OF CONDUITS REQUIRED. ALL ELBOWS TO BE 36 INCH (MIN) RADIUS. ALL BENDS MAY BE FACTORY MADE. IF MORE THAN 270 DEGREES OF BENDS OR IF RUN IS LONGER THAN 150 FEET, BENDS MUST BE RIGID STEEL.
- M. CONSULT WITH UTILITY PROVIDER'S REPRESENTATIVE 2 WEEKS BEFORE STARTING MAIN POWER TRENCHING FOR A PRE-CONSTRUCTION CONFERENCE. INCLUDED IN THIS CONFERENCE WILL BE EXCAVATOR, UTILITY PROVIDER, TELCO, CATV, AND GAS.
- N. CONTRACTOR TO LOCATE ALL UNDERGROUND UTILITIES BEFORE TRENCHING. COORDINATE WITH CIVIL.

KEYED NOTES:

- O. ELECTRICAL CONTRACTOR SHALL COORDINATE WITH THE MECHANICAL EQUIPMENT INSTALLER FOR THE EXACT POWER REQUIREMENTS AND LOCATION OF ALL MECHANICAL EQUIPMENT PRIOR TO ROUGH IN.
- P. RADIANT PATIO HEATERS ARE TO BE MOUNTED AT THE LOCATIONS INDICATED BY THE MECHANICAL EQUIPMENT INSTALLER. VERIFY EXACT LOCATION AND POWER REQUIREMENTS PRIOR TO ROUGH IN.
- Q. CONTRACTOR SHALL CONSULT PATIO HEATER MANUFACTURER DOCUMENTATION FOR ADDITIONAL INFORMATION PERTAINING TO INSTALLATION PRIOR TO ROUGH IN. CONTRACTOR SHALL COORDINATE ALL WORK WITH THE MECHANICAL CONTRACTOR.
- R. ANY EXPOSED CONDUIT SHALL BE ROUTED TIGHT TO STRUCTURE IN A NEAT AND CLEAN MANNER TO CONCEAL CONDUIT RUNS AS MUCH AS POSSIBLE.
- 1. PROVIDE J-BOX AT TOP OF COLUMN FOR FAN PROVIDED BY OWNER AND INSTALLED BY THE ELECTRICAL CONTRACTOR. EACH FAN TO BE FED FROM PANEL "H1" WITH ONE 20A, 120V, 1P CIRCUIT EACH. REFER TO PANEL SCHEDULE ON SHEET E1.1.
- 2. PROVIDE ONE 100A (MIN), 120/240V, 1PH SURFACE MOUNT RV TYPE UTILITY POWER OUTLET PANEL BOX & UTILITY DISCONNECT. PROVIDE PANEL BOX WITH THREE BREAKER SPACES; ONE 50A 2-POLE AND ONE 20A GFCI. BOX SHALL BE NEMA 3R RATED WITH "IN-USE" LOCKABLE WEATHER PROOF COVER. IT SHALL ALSO CONTAIN ONE NEMA 14-50R 50A TWIST LOCK RECEPTACLE AND ONE 20A GFCI RATED DUPLEX RECEPTACLE. PANEL SHALL BE MIDWEST GE M355G OR SIMILAR. ALL PRODUCT SUBMITTALS ARE SUBJECT TO APPROVAL.
- 3. PROVIDE ONE EMPTY 3" SCHEDULE 40 PVC CONDUIT, ROUTED UNDERGROUND FROM EACH POWER CONNECTION POINT TO THE ASSOCIATED TRAILER SPACE FOR TENANT'S USE. EACH CONDUIT SHALL BE PROVIDED WITH A PULL STRING AND CAPPED AT BOTH ENDS.
- 4. PROVIDE WEATHER PROOF, GFCI RATED 20A DUPLEX RECEPTACLE WITH LOCKING COVER AT POLE MOUNTED AREA LIGHT AND CIRCUIT AS NOTED.
- 5. PANEL H2 SURFACE MOUNTED AT PLAZA STRUCTURE COLUMN. PANEL TO BE NEMA 3R RATED WITH LOCKING PANEL COVER. REFER TO SHEET E1.11 FOR ADDITIONAL INFORMATION.