

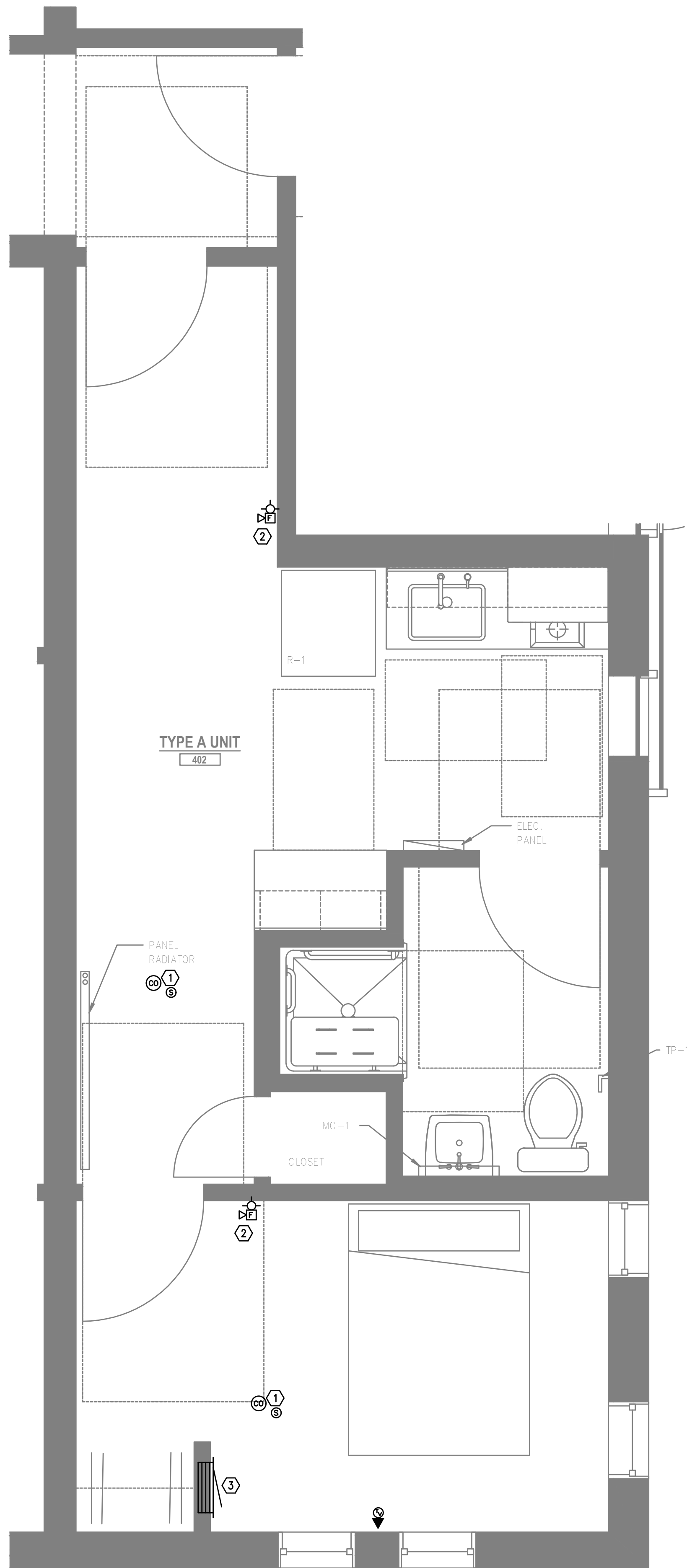
GENERAL NOTES:

- A. ALL PLANS ARE DIAGRAMMATICAL. CONSULT ARCHITECTURAL PLANS FOR EXACT LOCATION OF ALL DEVICES AND FIXTURES.
- B. REFER TO DETAILS ON ELECTRICAL SHEET FOR ADDITIONAL INFORMATION REGARDING ADA REACH REQUIREMENTS FOR OUTLET MOUNTING HEIGHT.
- C. STANDARD RECEPTACLE MOUNTING HEIGHT IS 18" A.F.F. UNLESS OTHERWISE SPECIFIED. RECEPTACLES LOCATED BELOW WINDOW SILLS SHALL NOT BE LESS THE 15" A.F.F. AS REQUIRED BY CODE. DEVICES LOCATED BELOW WINDOW SILLS MAY BE ROTATED 90° IF NECESSARY. CONTRACTOR TO ADVISE ARCHITECT IMMEDIATELY IF CONFLICT BETWEEN DEVICES AND WINDOW SILLS IS APPARENT.
- D. COORDINATE WITH ELECTRICAL FOR ROUGH IN OF LOW VOLTAGE DEVICES. REFER TO 'E' SERIES SHEETS FOR ADDITIONAL INFORMATION.

NOTES:

1. SMOKE AND 'CO' DETECTOR CAN BE A SINGLE DEVICE.
2. FIRE ALARM STROBE/SPEAKER TO REPORT BUILDING FIRE ALARM CONDITIONS.
3. 42" HEIGHT 'RF' TRANSPARENT PANEL FOR UTILITY DEMARCATION WITHIN UNIT.

3-BRM UNIT TYPE B
LEVEL 1 — TECHNOLOGY PLAN
1
T4.13
SCALE: 1/2" = 1'-0"



1-BRM UNIT TYPE A
LEVEL 4 — TECHNOLOGY PLAN
2
T4.13
SCALE: 1/2" = 1'-0"

FIRE ALARM AND DETECTION SYSTEM SHOWN ON PLANS(S) ARE FOR DESIGN INTENT ONLY. THIS IS A DEFERRED SUBMITTAL SYSTEM REQUIRING THE CONTRACTOR TO COMPLETE THE PERMIT READY DESIGN AND CALCULATIONS AS REQUIRED PER THE AUTHORITY HAVING JURISDICTION. VERIFY BUILDING OCCUPANCY TYPE AND OCCUPANT LOAD WITH ARCHITECTURAL PLANS.