

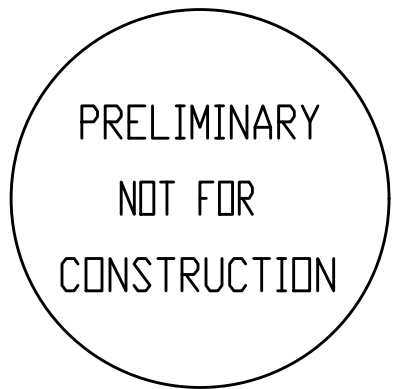
1  
T3.01 FIRST FLOOR TECHNOLOGY PLAN  
SCALE: 1/8" = 1'-0"

GENERAL NOTES:

- A. TECHNOLOGY DRAWINGS ARE DIAGRAMMATICAL AND MAY NOT ACCURATELY REFLECT ACTUAL CONSTRUCTION CONDITIONS. THE TECHNOLOGY CONTRACTOR SHALL BE RESPONSIBLE FOR COORDINATING THE INSTALLATION OF ALL TECHNOLOGY EQUIPMENT, WITH ALL TRADES PRIOR TO AND DURING CONSTRUCTION.
- B. THE TECHNOLOGY CONTRACTOR SHALL REFER TO THE ARCHITECTURAL DRAWINGS FOR ALL MOUNTING HEIGHTS AND FINISHES OF DEVICES AND FIXTURES.
- C. COORDINATE WITH MECHANICAL PLANS FOR LOCATIONS OF SMOKE, FIRE/SMOKE DAMPERS, AND ROOF TOP UNITS REQUIRING CONNECTION TO FIRE ALARM SYSTEM.
- D. FOR VOICE/DATA OUTLETS PROVIDE A SINGLE GANG MUD-RING WITH A 1" CONDUIT FROM THE TOP OF THE MUD-RING TO ACCESSIBLE CEILING SPACE. TERMINATE CONDUIT WITH END CONNECTORS AND THREAD ON PLASTIC BUSHING FOR CABLE PROTECTION. OUTLET SHALL BE AT THE SAME HEIGHT AS ADJACENT POWER OUTLET AND LESS THAN 18" SEPARATION. COORDINATE WITH ELECTRICAL.
- E. COORDINATE ALL DEVICE LOCATIONS WITH LATEST ARCHITECTURAL INTERIOR ELEVATIONS TO VERIFY DEVICES WILL NOT BE OBSTRUCTED.
- F. REFER TO ENLARGED TYPICAL UNIT PLANS (IF PROVIDED) FOR TYPICAL LAYOUTS FOR ALL APARTMENT UNIT TYPES.

PLAN NOTES:

- 1. STROBES TO BE PLACED AT 24" AT ELECTRICAL UTILITY REQUEST.
- 2. VERY COUNT AND LOCATION FOR FLOW AND TAMPER SWITCHES WITH FIRE SPRINKLER PLANS.
- 3. 4x8 FIRE RATED BACKBOARDS FOR CATV AND PHONE UTILITY.
- 4. 42" 'RF' TRANSPARENT SMART PANEL FOR UTILITY DEMARCATION WITHIN UNIT.
- 5. SMOKE AND CO DETECTORS CAN BE A SINGLE COMBINED UNIT.
- 6. VERIFY EXACT LOCATION AND COUNT OF DUCT DETECTORS WITH MECHANICAL PLANS.



FIRE ALARM AND DETECTION SYSTEM SHOWN ON PLAN(S) ARE FOR DESIGN INTENT ONLY. THIS IS A DEFERRED SUBMITTAL SYSTEM REQUIRING THE CONTRACTOR TO COMPLETE THE PERMIT READY DESIGN AND CALCULATIONS AS REQUIRED PER THE AUTHORITY HAVING JURISDICTION. VERIFY BUILDING OCCUPANCY TYPE AND OCCUPANT LOAD WITH ARCHITECTURAL PLANS.