

# ELECTRICAL SYMBOL LIST

**LIGHTING SYMBOLS**

	LIGHT FIXTURE, RECESSED
	LIGHT FIXTURE, RECESSED - EMERGENCY
	LIGHT FIXTURE, SURFACE MOUNT
	LIGHT FIXTURE, SURFACE MOUNT - EMERGENCY
	LIGHT FIXTURE, STRIP
	LIGHT FIXTURE, STRIP - EMERGENCY
	DOWNLIGHT FIXTURE, RECESSED
	DOWNLIGHT FIXTURE, RECESSED, WALLWASH
	DOWNLIGHT FIXTURE, RECESSED - EMERGENCY
	LIGHT FIXTURE, WALL MOUNT
	LIGHT FIXTURE, CEILING MOUNT
	RECESSED LIGHT FIXTURE, WALL MOUNT
	LIGHT FIXTURE, WALL MOUNT
	LIGHT FIXTURE, WALL SCOSCE
	LIGHT FIXTURE, TRACK W/ HEADS AS SHOWN ON PLAN
	EXIT SIGN, UNIVERSAL MOUNT, W/ DIRECTIONAL ARROW
	EXIT SIGN, WALL MOUNT, +8'-0" A.F.F.
	EMERGENCY LIGHT W/ BATTERY PACK, +8'-0" A.F.F.
	FLOOD LIGHT
	AREA LUMINAIRE
	AREA LUMINAIRE W/STANDBY LAMP
	AREA LUMINAIRE, WALL MOUNT
	AREA LUMINAIRE, POLE MOUNT
	AREA LUMINAIRE, POST TOP

**SWITCH SYMBOLS**

	SWITCH, SPST +48" A.F.F.
	SWITCH, DPST +48" A.F.F.
	SWITCH, 3-WAY +48" A.F.F.
	SWITCH, 4-WAY +48" A.F.F.
	SWITCH, DIMMER +48" A.F.F.
	SWITCH, SPST, W/PILOT LIGHT +48" A.F.F.
	SWITCH, KEY-OPERATED +48" A.F.F.
	SWITCH, TIMED +48" A.F.F.
	PHOTOCELL CONTROL
	OCCUPANCY SENSOR CONTROL

**SIGNAL SYMBOLS**

	TELEPHONE OUTLET +18" A.F.F.
	DATA OUTLET +18" A.F.F.
	DATA/TELEPHONE OUTLET +18" A.F.F.
	CLOCK
	SIGNAL BELL
	VISUAL ALARM SIGNAL (COLOR AS INDICATED ON PLAN)
	P.A. SPEAKER
	CATV OUTLET (LOCATE AS SHOWN ON PLANS)

**FIRE ALARM SYMBOLS**

	FIRE ALARM MANUAL PULL STATION, +48" A.F.F.
	MAGNETIC DOOR HOLDER
	SMOKE DETECTOR, W/AUX. CONTACTS
	SMOKE/FIRE DAMPER
	SMOKE DETECTOR, DUCT, IONIZATION TYPE W/SAMPLING TUBE
	SMOKE DETECTOR, IONIZATION TYPE
	SMOKE DETECTOR, PHOTO TYPE
	HEAT DETECTOR, RATE-OF-RISE OR FIXED TEMP.
	FIRE MAIN FLOW DETECTION SWITCH
	FIRE MAIN TAMPER DETECTION SWITCH
	FIRE ALARM BELL, +80" A.F.F.
	FIRE ALARM HORN, +80" A.F.F.
	FIRE ALARM HORN/STROBE, +80" A.F.F.
	FIRE ALARM STROBE, +80" A.F.F.

**POWER SYMBOLS**

	RECEPTACLE, DUPLEX +18" A.F.F.
	RECEPTACLE, QUAD +18" A.F.F.
	RECEPTACLE, DUPLEX +6" ABV COUNTER
	RECEPTACLE, DUPLEX +18" A.F.F. (ONE OUTLET SWITCHED)
	RECEPTACLE, DUPLEX +18" A.F.F. (BOTH OUTLETS SWITCHED)
	RECEPTACLE, DUPLEX, PEDESTAL MOUNT
	RECEPTACLE, DUPLEX, FLUSH FLOOR MOUNT
	RECEPTACLE, SPECIAL (COORDINATE WITH EQUIPMENT SERVED)
	RELAY
	TIME CLOCK CONTROL
	PUSHBUTTON STATION
	JUNCTION BOX
	THERMOSTAT
	TRANSFORMER
	DISCONNECT, NON-FUSED
	DISCONNECT, FUSED
	ELECTRICAL CONNECTION
	ELECTRICAL CONNECTION, SINGLE MOTOR
	ELECTRICAL CONNECTION, MULTI-MOTOR
	ELECTRICAL DISTRIBUTION PANEL, RECESSED
	ELECTRICAL DISTRIBUTION PANEL, SURFACE
	MISCELLANEOUS PANEL, RECESSED
	MISCELLANEOUS PANEL, SURFACE
	FLUSH FLOOR BOX (W/ DEVICES AS SHOWN ON PLAN)

**WIRING SYMBOLS**

	PANEL & CIRCUIT NUMBER
	HOMERUN TO PANEL
	CONDUCTOR SIZE (IF OTHER THAN #12)
	PHASE CONDUCTOR
	NEUTRAL CONDUCTOR
	GROUND CONDUCTOR
	CONCEALED CONDUIT
	CONDUIT SIZE
	CONDUIT (UNDER SLAB OR FLOOR)
	FLEXIBLE CONNECTION
	CONDUIT, STUBBED & CAPPED

**NOTATIONS**

	DRAWING NOTE
	DETAIL REFERENCE: TOP=DETAIL NO., BOTTOM=SHEET NO.
	MECHANICAL EQUIPMENT MARK NO. (SEE EQUIPMENT SCHEDULE)
	EQUIPMENT NO. (SEE EQUIPMENT SCHEDULE)

**ONE-LINE DIAGRAM SYMBOLS**

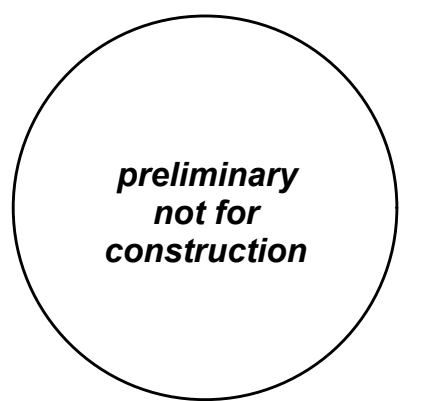
	ELECTRICAL DISTRIBUTION PANELBOARD (MLO)
	ELECTRICAL DISTRIBUTION PANELBOARD (MCB)
	SUB-FEED CIRCUIT BREAKER
	CIRCUIT BREAKER (TRIP RATING & POLES AS INDICATED ON PLAN)
	MAIN SWITCH (RATING & POLES AS INDICATED ON PLAN)
	FUSE (RATING & CLASS AS INDICATED ON PLAN)
	TRANSFER SWITCH (MANUAL OR AUTOMATIC)
	GENERATOR (RATING AS INDICATED ON PLAN)
	TRANSFORMER (RATING AS INDICATED ON PLAN)
	FUSE (RATING & CLASS AS INDICATED ON PLAN)
	GROUND SYSTEM (SIZE AS INDICATED ON PLAN)
	WATER PIPE GROUND ELECTRODE
	TRANSIENT VOLTAGE SURGE SUPPRESSOR
	UTILITY METER & METER BASE
	UTILITY METER CURRENT TRANSFORMER
	FEEDER NO. (SEE FEEDER SCHEDULE)

**ABBREVIATIONS**

A	LIGHT FIXTURE TYPE (SEE FIXTURE LIST)	I.G.	ISOLATED GROUND
A.F.F.	ABOVE FINISHED FLOOR	LCP	LIGHTING CONTROL PANEL
A.F.G.	ABOVE FINAL GRADE	MCB	MAIN CIRCUIT BREAKER
A.F.I.	ARC FAULT INTERRUPTER	MLO	MAIN LUGS ONLY
A.T.S.	TRANSFER SWITCH, AUTOMATIC	N.I.C.	NOT IN CONTRACT
C	CONDUIT	N.L.	NIGHT LIGHT
C.O.	CONDUIT ONLY	P	POLE
CATV	CABLE TELEVISION	PC	PARTIAL CIRCUIT
CB	CIRCUIT BREAKER	PH	PHASE
CCTV	CLOSED CIRCUIT TELEVISION	R.T.U.	REMOTE TELEMETRY UNIT
C.T.	CURRENT TRANSFORMER	T.V.S.S.	TRANSIENT VOLTAGE SURGE SUPPRESSOR
(E)	EXISTING	U.G.	UNDERGROUND
FACP	FIRE ALARM CONTROL PANEL	U.O.N.	UNLESS OTHERWISE NOTED
G.F.I.	GROUND FAULT INTERRUPTER	VFD	VARIABLE FREQUENCY DRIVE
GND	GROUND	W	WIRE
HP	HORSEPOWER	W.G.	WIRE GUARD
		W.P.	WEATHERPROOF

NOTE: SOME OF THE SYMBOLS AND ABBREVIATIONS ON THIS LIST MAY NOT APPLY TO THIS PROJECT.

311 W Evergreen Blvd. Suite 110  
Vancouver, WA 98660  
p | 709.280.2530



CONSULTANT:

1750 SW Skyline Blvd. Suite 229  
Portland, OR 97221  
p | 503.546.3755

**MFA** Consulting Engineers  
2007 S.E. Ash St.  
Portland, OR 97214  
PHN: (503) 234-0548  
FAX: (503) 234-0677  
WWW.MFIA-ENG.COM  
CONTACT:

**LOT 3**

**LOW RISE APARTMENTS**

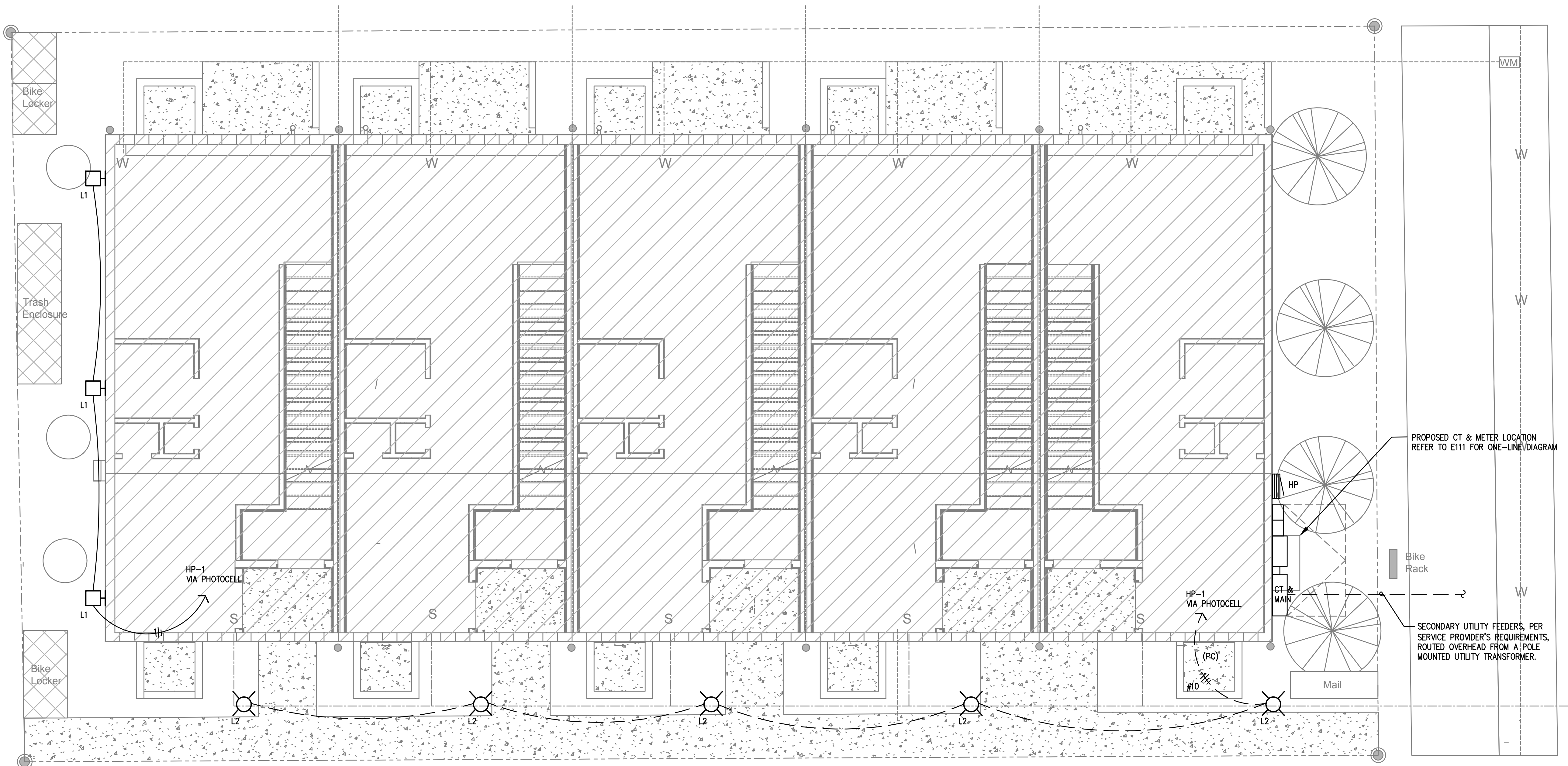
4306-4308 N Gantenbein Ave.  
Portland, OR 97217

**Permit Set**

PROJECT ABBREVIATION: LOT3  
DRAWN BY:  
DATE ISSUED: Issue Date

**electrical symbol list**

**E100**



311 W Evergreen Blvd. Suite 110  
 Vancouver, WA 98660  
 p | 709.280.2530

preliminary  
not for  
construction

CONSULTANT:

1750 SW Skyline Blvd. Suite 229  
 Portland, OR 97221  
 p | 503.546.3755

**M** Consulting Engineers  
**F** 2007 S.E. Ash St.  
**A** Portland, OR 97214  
**INC.** PHN: (503) 234-0548  
 FAX: (503) 234-0677  
 CONTACT: WWW.MFIA-ENG.COM

VANCOUVER AVENUE

PROPOSED CT & METER LOCATION  
 REFER TO E111 FOR ONE-LINE DIAGRAM

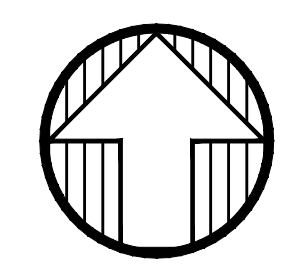
Bike Rack

SECONDARY UTILITY FEEDERS, PER  
 SERVICE PROVIDER'S REQUIREMENTS,  
 ROUTED OVERHEAD FROM A POLE  
 MOUNTED UTILITY TRANSFORMER.

**LOT 3**

**LOW RISE  
 APARTMENTS**

4306-4308 N Gantenbein  
 Ave.  
 Portland, OR 97217



**1**  
**E101** ELECTRICAL SITE PLAN  
 SCALE: 1/4" = 1'-0"

**GENERAL NOTES:**

- A. ALL WORK SHALL BE PERFORMED IN ACCORDANCE WITH ALL APPLICABLE LOCAL, STATE AND NATION CODES.
- B. ALL PLANS ARE CONSIDERED DIAGRAMMATICAL. THEREFORE ALL EQUIPMENT SIZES AND DEVICE LOCATIONS ARE APPROXIMATE AND SUBJECT TO FIELD CONDITIONS AND PRODUCT APPROVAL.
- C. ELECTRICAL SERVICE ENTRANCE EQUIPMENT DESIGN IS BASED ON SIEMENS PRODUCTS. ACTUAL PRODUCTS INSTALLED MAY DIFFER IN SIZE AND CONFIGURATION AND SHALL BE DOCUMENTED IN FINAL PROJECT DOCUMENTS.
- D. COORDINATE WITH LOCAL UTILITY PROVIDER FOR EXACT SERVICE CONDUIT AND CONDUCTORS REQUIREMENTS.
- E. ALL UTILITY WORK SHALL BE DONE IN ACCORDANCE WITH CLARK PUBLIC UTILITIES ELECTRICAL SERVICE REQUIREMENTS.
- F. U.G. PRIMARY FEEDER SHALL HAVE A MINIMUM 48 INCH BURY.
- G. U.G. SECONDARY FEEDER SHALL HAVE A MINIMUM 36 INCH BURY.
- H. REFER TO SHEET E1111 FOR ONE-LINE DIAGRAM, LOAD SUMMARY INFORMATION AND TYPICAL FEEDER SCHEDULE.

- I. UNDER GROUND SECONDARY CONDUIT SWEEPS SHALL BE MINIMUM 60 INCH RADIUS WITH A MINIMUM OF 7'-0" STRAIGHT CONDUIT RUN BETWEEN SWEEPS.
- J. CONTRACTOR SHALL REVIEW UTILITY PROVIDER'S ELECTRICAL SERVICE REQUIREMENTS PRIOR TO THE START OF ANY WORK.
- K. LOCATION AND INSTALLATION OF THE PRIMARY AND SECONDARY CONDUITS, TRANSFORMER, ETC. SHALL BE PROVIDED PER THE UTILITY PROVIDER'S ELECTRICAL SERVICE REQUIREMENTS.
- L. CONTRACTOR SHALL REVIEW ALL PROJECT DOCUMENTS AND SPECIFICATIONS IN DETAIL AND REFER TO THE DOCUMENTS THROUGHOUT THE CONSTRUCTION.

**UTILITY REQUIREMENTS**

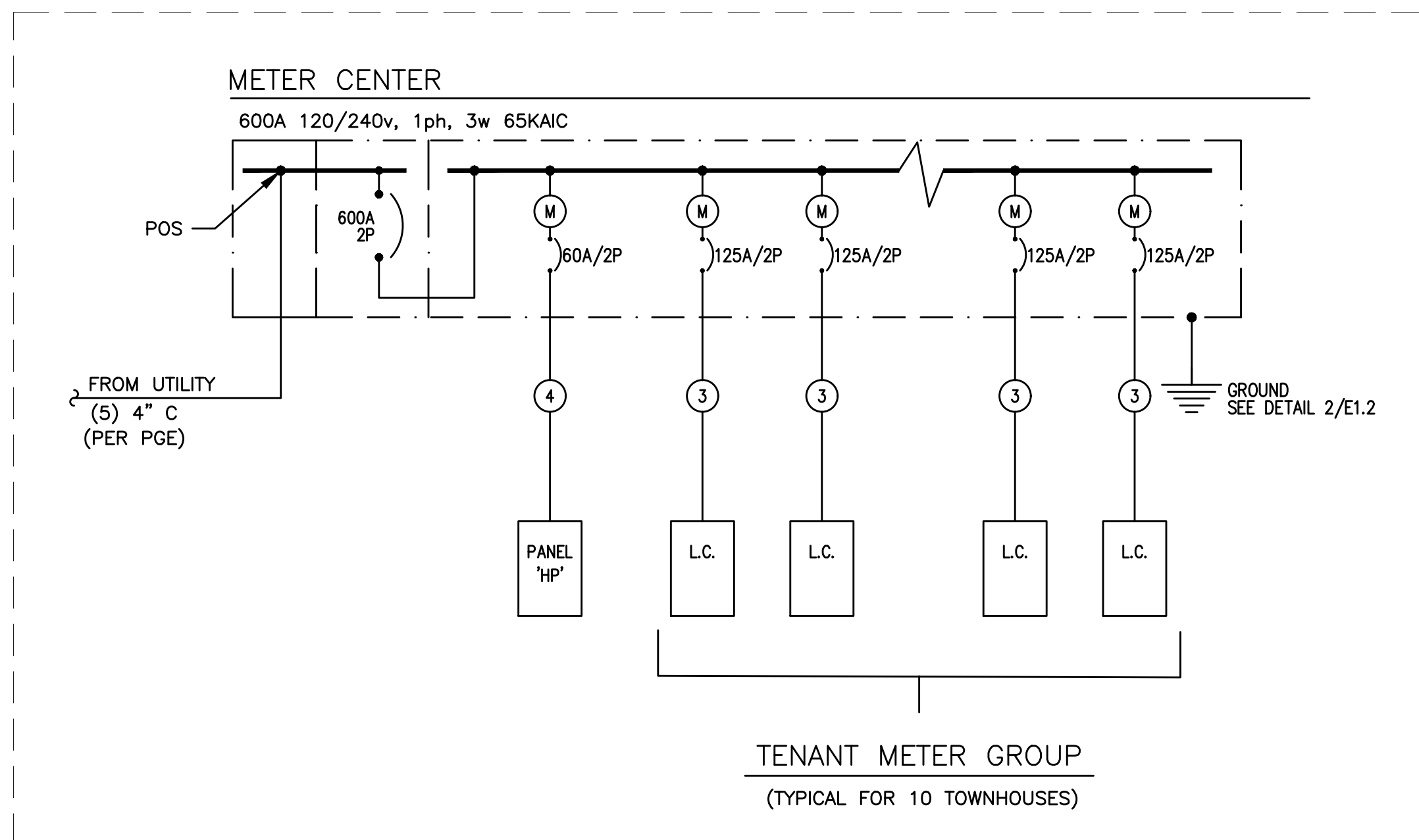
1. CUSTOMER TO PROVIDE ALL TRENCHING AND BACKFILLING. TRENCH TO BE 36 INCHES DEEP AND 30 INCHES WIDE, MEASURED FROM FINAL GRADE.
  2. ALL UTILITY CONDUCTORS TO BE INSTALLED IN GRAY SCHEDULE 40, ELECTRICAL GRADE, PVC CONDUIT WITH NYLON PULL STRINGS (MIN 500 LBS. TEST). CLARK PUBLIC UTILITIES TO DETERMINE THE SIZE AND NUMBER OF CONDUITS REQUIRED, ALL ELBOWS TO BE 36 INCH (MIN) RADIUS. ALL BENDS MAY BE FACTORY MADE. IF MORE THAN 270 DEGREES OF BENDS OR IF RUN IS LONGER THAN 150 FEET, BENDS MUST BE RIGID STEEL.
- CONSULT WITH UTILITY REPRESENTATIVE 2 WEEKS BEFORE STARTING MAIN POWER TRENCHING FOR A PRE-CONSTRUCTION CONFERENCE. INCLUDED IN THIS CONFERENCE WILL BE EXCAVATOR, CPU, TELCO, CATV, AND GAS.  
 CONTRACTOR TO LOCATE ALL UNDERGROUND UTILITIES BEFORE TRENCHING.

**Permit Set**

PROJECT ABBREVIATION: LOT3  
 DRAWN BY: dmt  
 DATE ISSUED: Issue Date

**electrical  
 site plan**

**E101**



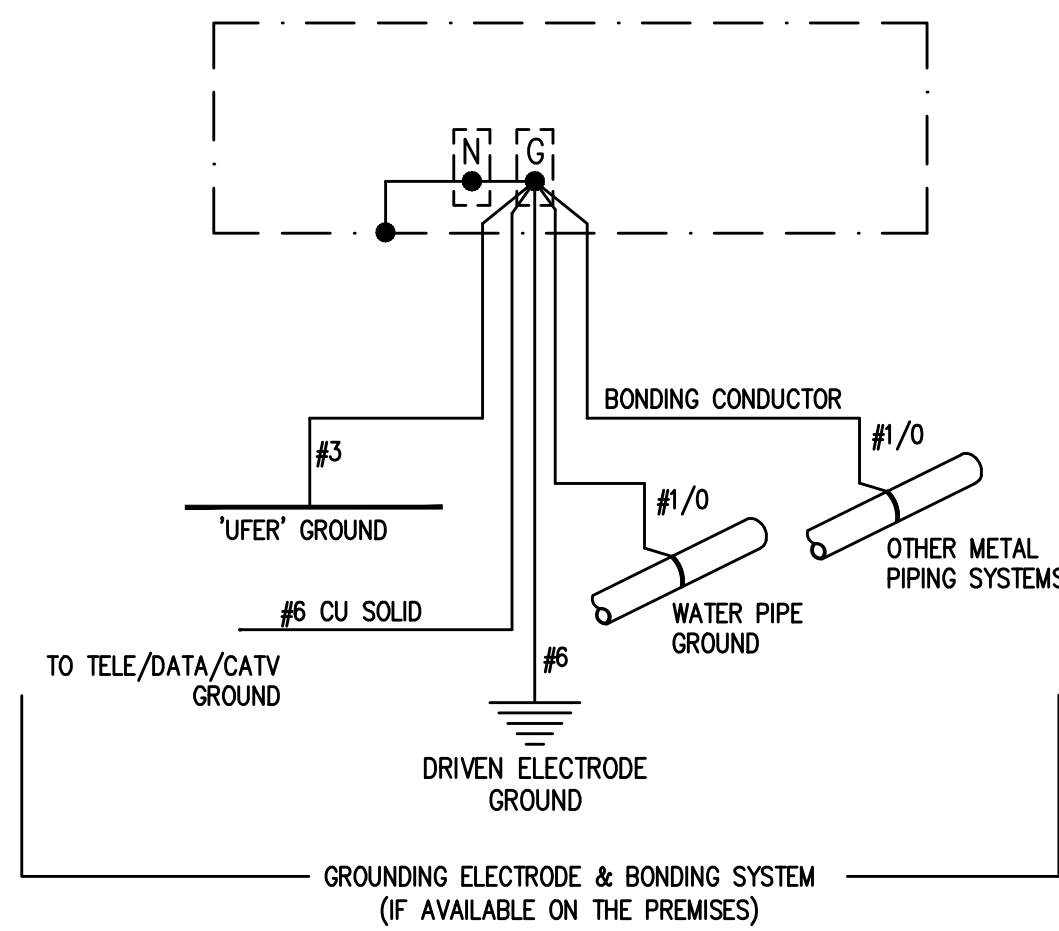
1 ELECTRICAL ONE-LINE DIAGRAMS (TYPICAL)  
E111 120/240V, 1Ø, 3 WIRE

FEEDER SCHEDULE (COPPER)				
NO.	AMPS	CONDUIT	CONDUCTOR	
1		*(5) 4"	BY UTILITY CO.	& (1) GND
2	600A	(2) 3"	ea w/ (3) #350Kcmil	& (1) #2/0 GND
3	125A	1 1/2"	(3) #1	& (1) #6 GND
4	60A	1"	(3) #4	& (1) #8 GND

\* PARALLEL FEEDER

ONE-LINE GENERAL NOTES:

- A. COORDINATE ALL WORK ASSOCIATED WITH ELECTRIC SERVICE WITH LOCAL UTILITY. PROVIDE ALL CONDUIT & CONDUCTORS, GROUNDING, TRANSFORMER VAULT/PAD, ETC., IN ACCORDANCE WITH SERVING UTILITY REQUIREMENTS.
- B. COORDINATE METERING REQUIREMENTS WITH UTILITY.
- C. FOR LOAD CENTER FEEDER LENGTHS GREATER THAN 145'-0" FROM METER CENTER, INCREASE WIRE SIZE ONE SIZE UP FOR VOLTAGE DROP.

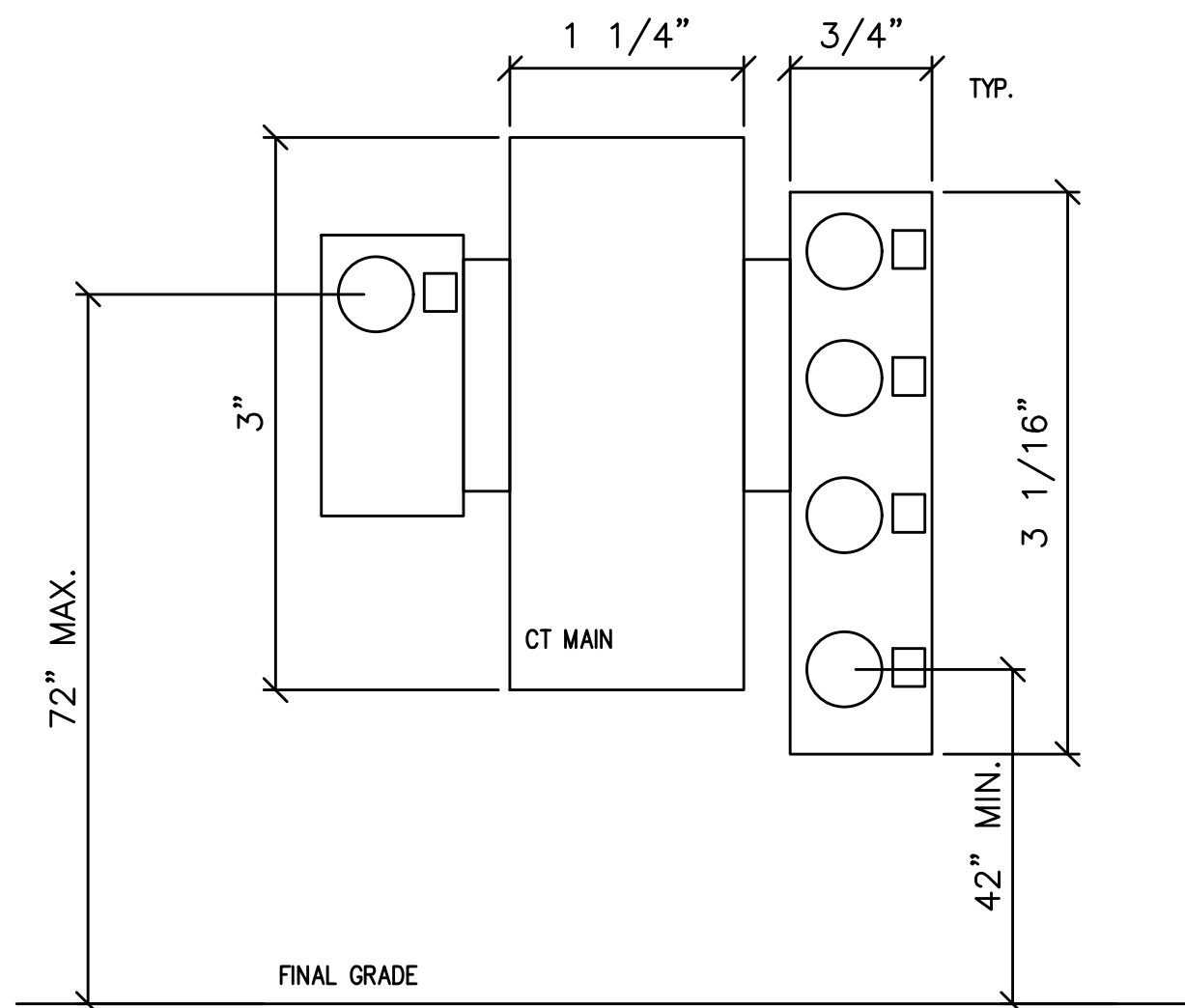


2 GROUNDING/BONDING DIAGRAM  
E111 120/208V, 3Ø, 4 WIRE

Lot 3 Townhouses Typical Overall Building Load Summary							
LOAD:	LIGHTS	RECEPT	HEAT	EQUIP	MOTORS	RESIDENT LOADS	LARGEST MOTOR
House Panel (typ)	1,000	500					
Combined Townhouses (total of 10)						139,000	
SUBTOTAL	1,000	500	0	0	0	139,000	0
X-FACTOR	1.25	1 + .5	1	1	1	1	0.25
CODE LOAD:	1,250	500	0	0	0	139,000	0
CONN LOAD:	141 KVA						
VOLTS:	240 1ph						
TOTAL CALC:	141 KVA						
CALC AMPS:	586 AMPS						

10/21/2020

MFIA PANEL SCHEDULE										21-Oct-20	
panel	mounting	SURFACE NEMA 3R		location		connected load				7	
HOUSE PANEL	voltage	phase	1	60A	bus & main	MLO	calculated load				
C	service	va	o/s	no.	L1	L2	no.	o/s	va	C	
1	LIGHTS - SITE & BUILDING	292	20/1	1	*	2	20/1	va	900	RECEPT - EXTERIOR	2
1	LIGHTS - EGRESS	55	20/1	3	*	4	20/1	va	500	IRRIGATION	5
	SPARE	20/1	5	*	6	20/1			SPARE		
	SPARE	20/1	7	*	8	20/1			SPARE		
	SPARE	20/1	9	*	10	20/1			SPARE		
	SPARE	20/1	11	*	12	20/1			SPARE		
	BLANK	20/1	13	*	14				BLANK		
	BLANK	20/1	15	*	16				BLANK		
	BLANK	20/1	17	*	18				BLANK		
	BLANK	20/1	19	*	20				BLANK		
	BLANK	20/1	21	*	22				BLANK		
	BLANK	20/1	23	*	24				BLANK		
	BLANK	20/1	25	*	26				BLANK		
	BLANK	20/1	27	*	28				BLANK		
	BLANK	20/1	29	*	30				BLANK		
	BLANK	20/1	31	*	32				BLANK		
	BLANK	20/1	33	*	34				BLANK		
	BLANK	20/1	35	*	36				BLANK		
	BLANK	20/1	37	*	38				BLANK		
	BLANK	20/1	39	*	40				BLANK		
	BLANK	20/1	41	*	42				BLANK		
Line 1	1192 VA		NOTES:		line-line voltage		240				
Line 2	555 VA				largest motor (va)		0				
Total Connected	1747 VA				calculated load (va)		0				
load code:	line 1	line 2			total	factor					
1. LIGHTS=	292	55		VA	347	1.25	434				
2. RECEPT=	900	0		VA	900	1 + 0.5	900				
3. HEATING=	0	0		VA	0	1.00	0				
4. KITCHEN=	0	0		VA	0	1.00	0				
5. EQUIP.=	0	500		VA	500	1.00	500				
6. MOTORS=	0	0		VA	0	*	0				
7. SUB-PANEL=	0	0		VA	0	1.00	0				
(* 125% of the largest motor + 100% of the balance)					TOTAL =	1834					



3 TYPICAL METER ELEVATION  
E111 NOT TO SCALE

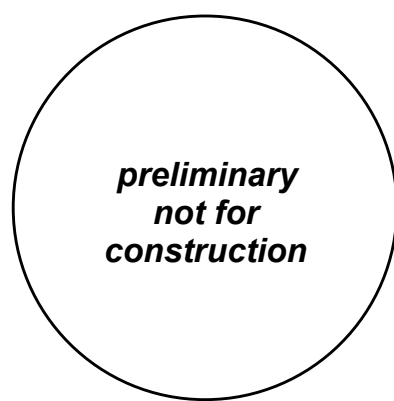
TYPICAL METER ARRANGEMENT PER UTILITY PROVIDER'S REQUIREMENTS. COMPONENTS SHOWN ARE APPROXIMATE BASED ON VENDOR INFORMATION. ACTUAL EQUIPMENT TO BE INSTALLED MAY VARY. ELECTRICAL CONTRACTOR TO PROVIDE CUTSHEETS OF THE PRODUCTS INSTALLED UPON SUBMITTAL REVIEW & APPROVAL.

Lot 3 Townhouses RESIDENTIAL LOAD SUMMARY															
UNIT TYPE:	Lt 1/2	Lt 3/4	TOTAL	AREA (SF)	LTG/RECEPT (VA / SF)	SM APPL (1500VA X 2)	LAUNDRY (1500VA)	COOKING (CONNECTED)	MICROWAVE (CONNECTED)	DISHWASHER (CONNECTED)	DRYER (CONNECTED)	WATER HEATER (CONNECTED)	DISPOSAL (CONNECTED)	MOTORS (CONNECTED)	LARGEST OF: AC/HEATING (CONNECTED)
Unit #1 - 2br TH	1		1	928	2784	3000	1500	14000	1500	1200	5600	4500	900	0	5336
Unit #2 - 2br TH	1		1	928	2784	3000	1500	14000	1500	1200	5600	4500	900	0	5336
Unit #3 - 2br TH	1		1	928	2784	3000	1500	14000	1500	1200	5600	4500	900	0	5336
Unit #4 - 2br TH	1		1	928	2784	3000	1500	14000	1500	1200	5600	4500	900	0	5336
Unit #5 - 2br TH	1		1	928	2784	3000	1500	14000	1500	1200	5600	4500	900	0	5336
Unit #6 - 2br TH	1		1	928	2784	3000	1500	14000	1500	1200	5600	4500	900	0	5336
Unit #7 - 2br TH	1		1	928	2784	3000	1500	14000	1500	1200	5600	4500	900	0	5336
Unit #8 - 2br TH	1		1	928	2784	3000	1500	14000	1500	1200	5600	4500	900	0	5336
Unit #9 - 2br TH	1		1	928	2784	3000	1500	14000	1500	1200	5600	4500	900	0	5336
Unit #10 - 2br TH	1		1	928	2784	3000	1500	14000	1500	1200	5600	4500	900	0	5336
TOTALS:	5	5	10	7424	22272	24000	12000	112000	12000	9600	44800	36000	7200	0	42688
				VOLTS:	240 1ph										
				TOTAL CONNECTED:	323 KVA										
				DEMAND FACTOR:	0.43 Based on Total Number of Residential Units = 8-10 (See N.E.C. Article: 220.84)										
				TOTAL CALCULATED:	139 KVA										
				CALCULATED AMPS:	578 AMPS										
NOTE:															

MFIA CIRCUIT DIRECTORY										21-Oct-20	
Loadcenter Name	mounting	location		connected load						7	
LC-2-Bedroom (TYPICAL)	RECESSED	bus & main	calculated load								
service	va	o/s	no.	L1	L2	no.	o/s	va	C		
LIGHTS-KITCHEN/LIVING	20/1(A)	1	*	2	20/1(A)	APPLIANCE CIRCUIT					
LTS & RECEPT - BATH	20/1	3	*	4	20/1(A)	APPLIANCE CIRCUIT					
SPARE	20/1(A)	5	*	6	20/1	REFRIGERATOR					
LTS & RECEPT-BEDROOM	20/1(A)	7	*	8	50/2	RANGE					
RECEPTACLES	20/1(A)	9	*	10							
RECEPTACLES	20/1(A)	11	*	12	20/1	HOOD					
SPARE	20/1(A)	13	*	14	20/1	DISPOSAL					
WASHER	20/1	15	*	16	20/1	DISHWASHER					
DRYER	30/2	17	*	18	20/1	SPARE					
WATER HEATER	30/2	21	*	22		HEAT (SPLIT SYSTEM)					
SPARE	20/1	25	*	26	20/1	SMART PANEL (OPTION)					
BLANK	27	*	28			BLANK					
BLANK	29	*	30			BLANK					
BLANK	31	*	32			BLANK					
BLANK	33	*	34			BLANK					
BLANK	35	*	36			BLANK					
BLANK	37	*	38			BLANK					
BLANK	39	*	40			BLANK					
BLANK	41	*	42			BLANK					
NOTES:											
1. (A) DENOTES: ARC-FAULT INTERRUPTER CIRCUIT BREAKER. INSTALL PER NEC 210.12.											
2. LOADS FOR THIS PANEL ARE INDICATED ON THE "DWELLING UNIT LOAD CALCULATION".											
3. BREAKER & WIRE SHALL BE SIZED FOR EQUIPMENT INSTALLED.											
4. (G) DENOTES GFCI RATED BREAKER.											

DWELLING UNIT LOAD CALCULATION	
Project:	Lot 3 Townhouses
Unit Type:	2 Bedroom (typical)
Area:	928 square feet (average)
Minimum Size Feeder (NEC 220.40):	
General lighting load at 3 VA / SF	2,784 VA
Small Appliance load (2 ckt at 1500VA each)	3,000 VA
Laundry Load (1 ckt at 1500VA)	1,500 VA
Range	11,600 VA
Other Cooking Appliance Load (Microwave Oven)	1,500 VA
Dishwasher Load	1,200 VA
Dryer Load	5,600 VA
Water Heater Load	4,500 VA
Disposal load	900 VA
Other motor loads	0 VA
<b>Total "General Loads"</b>	<b>32,584 VA</b>
First 10 kVA of "general loads" at 100%	10,000 VA
Remainder of "general loads" at 40%	9,034 VA
<b>Net "general load"</b>	<b>19,034 VA</b>
Largest of:	
-or- VA of electric space heating (less than 4) at 65%	0 VA
-or- VA of electric space heating (4 or more) at 40%	0 VA
-or- VA of air conditioning/cooling/heat pumps at 100%	5,336 VA
<b>TOTAL LOAD</b>	<b>24,370 VA</b>
For 120/240-volt, 4-wire, Single-phase service or feeder,	
24,370 VA / 240 volts =	102 Amps
Therefore, this dwelling unit shall be permitted to be served by a	125 amp service.

311 W Evergreen Blvd. Suite 110  
Vancouver, WA 98660  
p | 709.280.2530



CONSULTANT:  
1750 SW Skyline Blvd. Suite 229  
Portland, OR 97221  
p | 503.546.3755

M Consulting Engineers  
2007 S.E. Ash St.  
Portland, OR 97214  
PHN: (503) 234-0548  
FAX: (503) 234-0877  
CONTACT: WWW.MFIA-ENG.COM

LOT 3  
LOW RISE APARTMENTS  
4306-4308 N Gantenbein Ave.  
Portland, OR 97217

Permit Set  
PROJECT ABBREVIATION: LOT3  
DRAWN BY:  
DATE ISSUED: Issue Date

electrical one-line diagram & schedules

E111  
Covalent Architecture, LLC © 2020

MECHANICAL EQUIPMENT SCHEDULE									
NO.	EQUIPMENT NAME	HP/KW	VOLTS	PH	AMPS	CONDUIT	WIRE	GND	CIRCUIT
EF-1	EXHAUST FAN NO.1	11.0W	120	1		1/2"	#12	#12	SEE POWER PLANS
HP-1A	MINI SPLIT SYST NO.1 (INDOOR)								
HP-1B	MINI SPLIT SYST NO.1 (INDOOR)								
OHP-1	MINI SPLIT SYST NO.1 (OUTDOOR)	208	1	21.9 MCA	3/4"	#6	#10		SEE POWER PLANS
WH-1	WATER HEATER NO.1	4.5KW	208	1		1/2"	#12	#12	SEE POWER PLANS

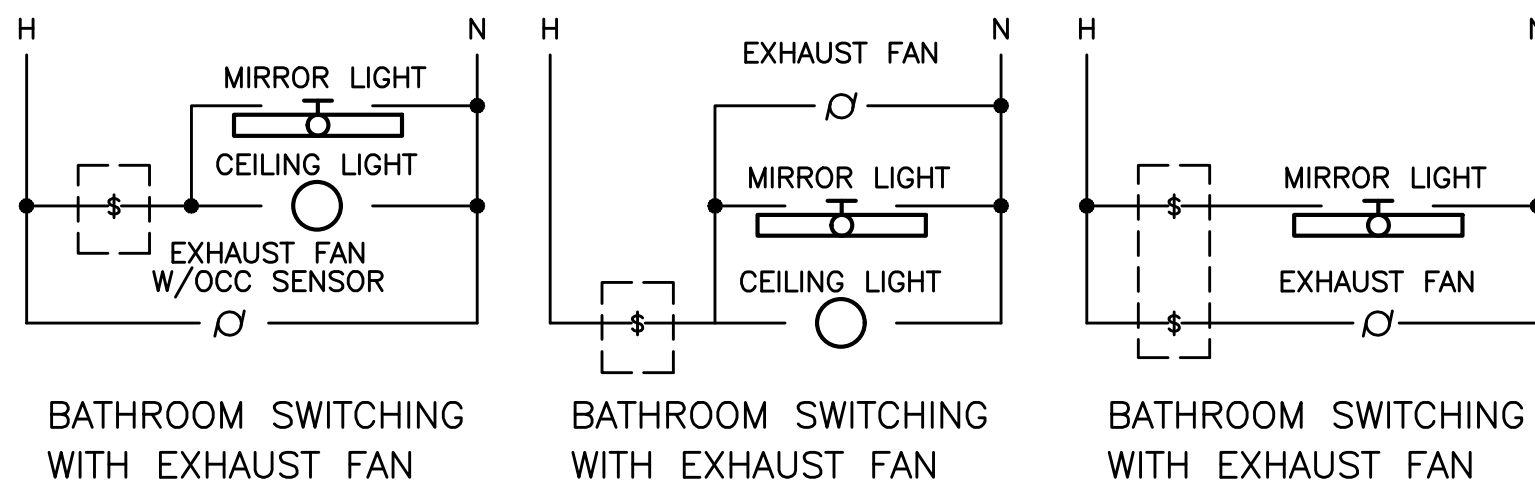
LIGHTING FIXTURE LIST					
TYPE	LAMP	MANUFACTURER	CATALOG NUMBER	DESCRIPTION	OPTIONS
EM	LED 11W	LSI LIGHTING (OR APPROVED OTHER)	CSL SERIES	TYPE :EMERGENCY LIGHT MOUNTING :WALL MOUNT (+8"-0" MIN.) HOUSING :THERMOPLASTIC LENS/REFL :NA VOLTAGE :MVOLT BALLAST :BATTERY BACK UP	FINISH PER ARCHITECT  UNIT COMMON ENTRY
L1	LED 4000K 2873LM 34W	LSI LIGHTING (OR APPROVED OTHER)	XPWS3 SERIES	TYPE :EXTERIOR WALL PACK MOUNTING :WALL MOUNT (+8"-0" MIN.) HOUSING :ALUMINUM LENS/REFL :TEMPERED GLASS VOLTAGE :MVOLT BALLAST :BATTERY BACK UP	FINISH PER ARCHITECT  UL LISTED WET LOCATION BUILDING EXTERIOR
L2	LED 4000K 2873LM 34W	LSI LIGHTING (OR APPROVED OTHER)	CBR7 SERIES	TYPE :42" BOLLARD LIGHT MOUNTING :AT GRADE HOUSING :ALUMINUM LENS/REFL :POLYCARBONATE VOLTAGE :MVOLT BALLAST :BATTERY BACK UP	FINISH PER ARCHITECT  UL LISTED WET LOCATION BUILDING WALK WAY
U1	LED 3000K 670LM 12W	HALO LOGHTING (OR APPROVED OTHER)	SLD4059 SERIES	TYPE :4" DIA CEILING LIGHT MOUNTING :SURFACE HOUSING :ALUMINUM LENS/REFL :ACRYLIC VOLTAGE :120V BALLAST :LED DRIVER (0-10 DIMMING)	UL LISTED WET LOCATION UNIT KITCHEN, BATH, HALL
U2	LED 3000K 1600LM 20W	KUZCO LIGHTING (OR APPROVED OTHER)	FM3511 SERIES	TYPE :11" DIA CEILING LIGHT MOUNTING :SURFACE HOUSING :STEEL LENS/REFL :FROSTED GLASS VOLTAGE :120V BALLAST :LED DRIVER (0-10 DIMMING)	FINISH PER ARCHITECT  UNIT BEDROOM
U3	LED 3000K 1600LM 20W	KUZCO LIGHTING (OR APPROVED OTHER)	VL62220 SERIES	TYPE :20" VANITY BAR MOUNTING :SURFACE (=6" ABOVE MIRROR) HOUSING :STEEL LENS/REFL :ACRYLIC VOLTAGE :120V BALLAST :LED DRIVER (0-10 DIMMING)	FINISH PER ARCHITECT  UNIT BATHROOM
U4	LED 3000K 1700LM 18W	DESIGN CLASSICS LIGHTING (OR APPROVED OTHER)	5014-9030T16 SERIES	TYPE :14" DIA. CEILING LIGHT MOUNTING :SURFACE HOUSING :STEEL LENS/REFL :ACRYLIC VOLTAGE :120V BALLAST :LED DRIVER (0-10 DIMMING)	FINISH PER ARCHITECT  UNIT DINING AREA
U4	LED 3000K 1700LM 18W	DESIGN CLASSICS LIGHTING (OR APPROVED OTHER)	5014-9030T16 SERIES	TYPE :14" DIA. CEILING LIGHT MOUNTING :SURFACE HOUSING :STEEL LENS/REFL :ACRYLIC VOLTAGE :120V BALLAST :LED DRIVER (0-10 DIMMING)	FINISH PER ARCHITECT  UNIT DINING AREA
U5	LED 3000K 800LM 12W	KUZCO LIGHTING (OR APPROVED OTHER)	EW3105 SERIES	TYPE :EXTERIOR SCNCE MOUNTING :SURFACE (+6.5FT AFF) HOUSING :ALUMINUM LENS/REFL :TEMPERED GLASS VOLTAGE :120V BALLAST :LED DRIVER	FINISH PER ARCHITECT  UNIT ENTRIES, PATIOS

GENERAL EQUIPMENT NOTES:

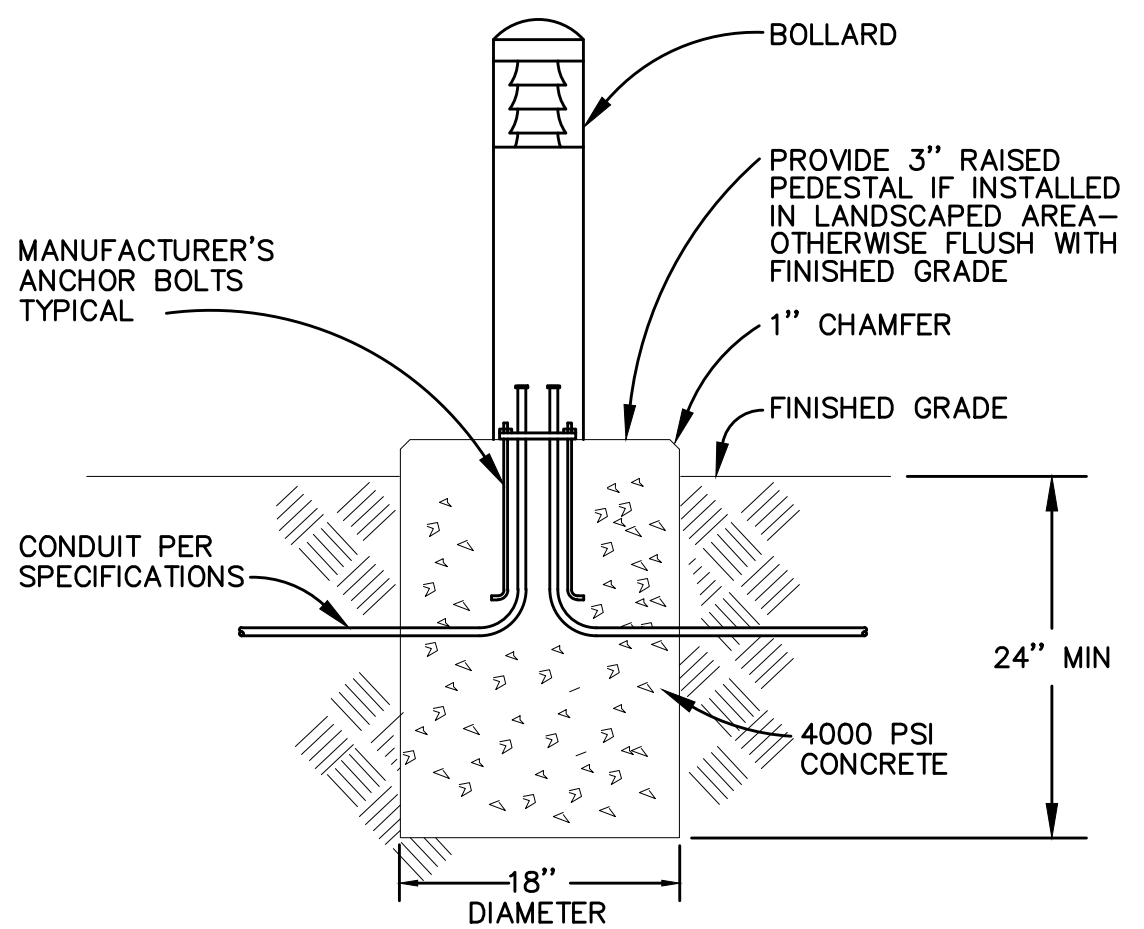
- A. CONTRACTOR/DESIGNER SHALL VERIFY ALL MECHANICAL EQUIPMENT CONNECTION LOAD REQUIREMENTS WITH THE MECHANICAL EQUIPMENT PROVIDER PRIOR TO ROUGH IN.
- B. MECHANICAL EQUIPMENT SIZES SHOWN IN THE MECHANICAL SCHEDULE ABOVE ARE FOR REFERENCE ONLY AND MAY NOT REFLECT THE ACTUAL EQUIPMENT TO BE INSTALLED.
- C. INDOOR & OUTDOOR COMPONENTS OF THE MINI-SPLIT SYSTEMS ARE INTERCONNECTED. CONSULT WITH AND COORDINATE THE ELECTRICAL REQUIREMENTS AND EXACT LOCATIONS WITH THE HVAC EQUIPMENT INSTALLER PRIOR TO ROUGH IN.
- D. REFER TO TYPICAL UNIT PLAN LOAD CENTER SCHEDULES ON THIS SHEET FOR CIRCUITING INFORMATION.

GENERAL LIGHTING NOTES:

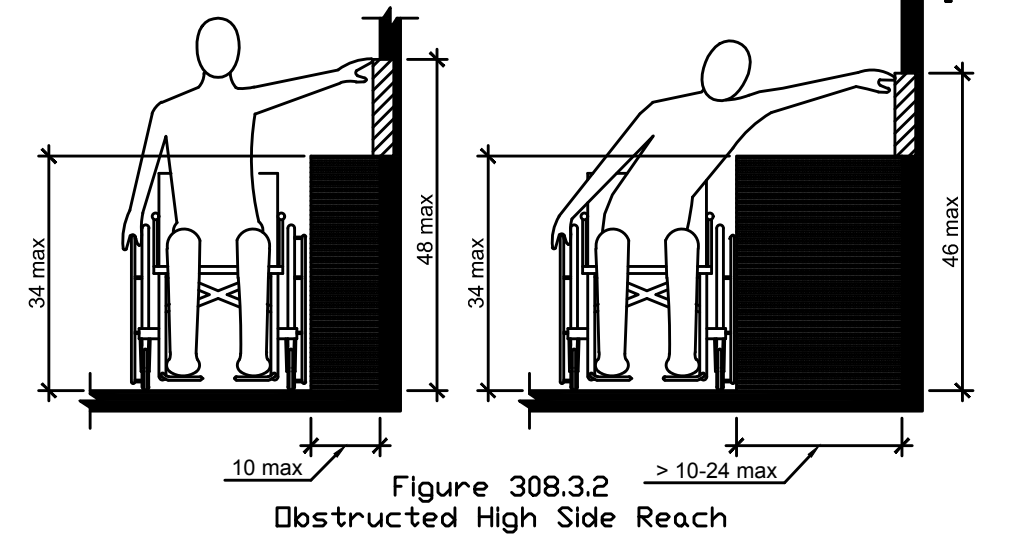
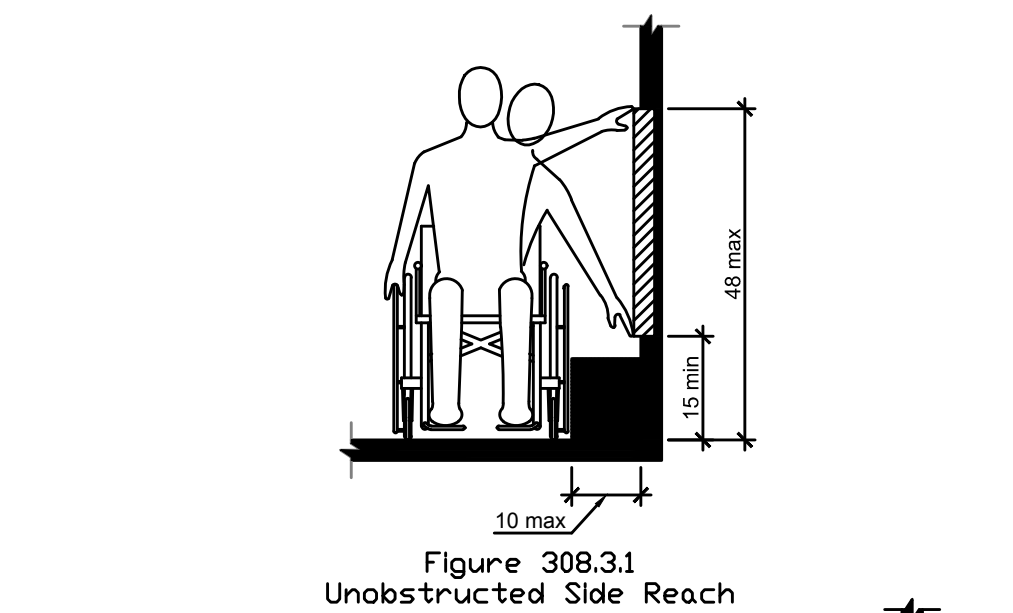
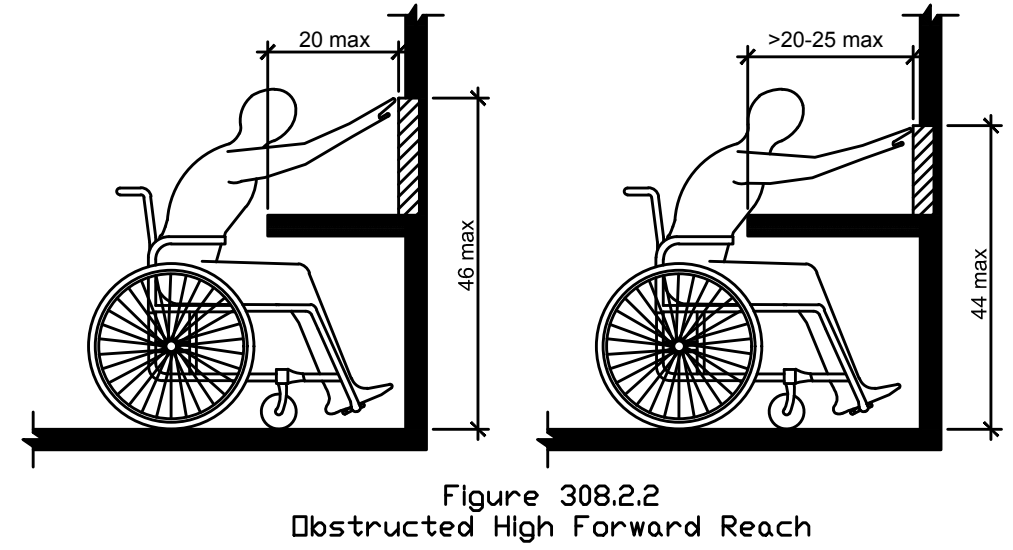
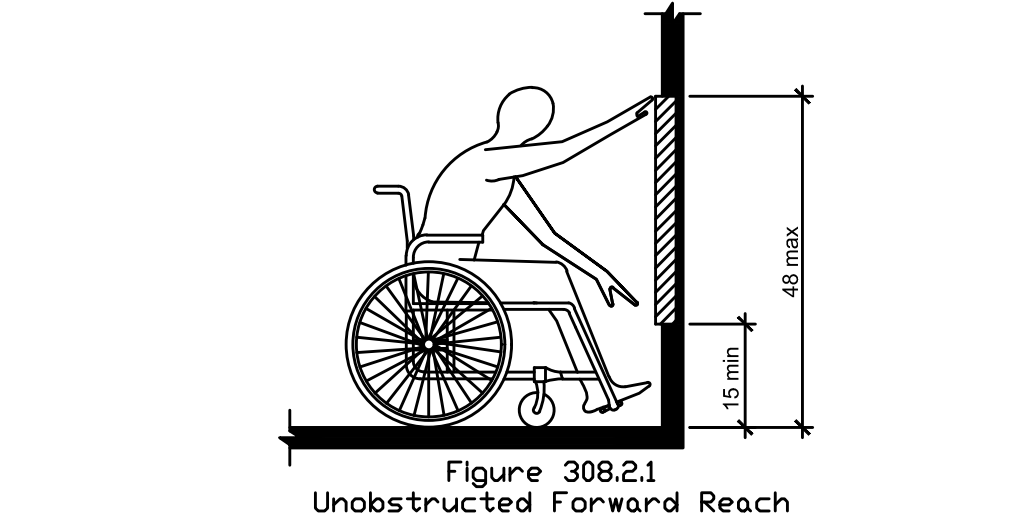
- A. ALL LIGHT FIXTURES SHALL HAVE ENERGY EFFICIENT LAMPING AND BALLASTS.
- B. LIGHT FIXTURES FOR LIVING UNITS SHALL BE "ENERGY STAR" RATED.
- C. VERIFY ALL FIXTURE FINISHES WITH ARCHITECT PRIOR TO BID.
- D. VERIFY ALL FIXTURE MOUNTING HEIGHTS WITH ARCHITECT PRIOR TO BID.
- E. VERIFY ALL FIXTURE LOCATIONS WITH ARCHITECT PRIOR TO ROUGH IN.
- F. ALL INTERIOR LIGHTING SHALL BE 3000 KELVIN UNLESS OTHERWISE NOTED.
- G. ALL PRODUCT SUBSTITUTIONS AND VALUE ENGINEERING SHALL BE SUBMITTED DURING BID PHASE, SHALL MEET DESIGN INTENT AND IS SUBJECT TO OWNER APPROVAL.
- H. EGRESS LIGHTING SHALL BE PROVIDED TO MEET MINIMUM LIGHT LEVELS AS DESCRIBED PER OREGON STRUCTURAL SPECIALTY CODE 1006.3.
- I. BUILDING EXTERIOR & SITE LIGHTING SHALL BE CONTROLLED VIA PHOTOCELL, EITHER INTEGRAL OR REMOTE, FOR DUSK-TILL-DAWN OPERATION.
- J. BUILDING MOUNTED LIGHT FIXTURES TYPES 'L1' & 'U5' (ON HOUSE POWER) SHALL BE CONTROLLED VIA ROOF MOUNTED PHOTOCELL. THESE FIXTURES ARE TO BE SEPARATE FROM TENANT CONTROLLED "PORCH" LIGHTS.



1 BATHROOM SWITCHING DIAGRAM - TYPICAL  
NO SCALE



2 BOLLARD LIGHT DETAIL  
NO SCALE



3 ADA REACH REQUIREMENTS  
N.T.S.

**308.2 Forward Reach.**

**308.2.1 Unobstructed.** Where a forward reach is unobstructed, the high forward reach shall be 48" maximum and the low forward reach shall be 15" minimum above the floor or ground.

**308.2.2 Obstructed High Reach.** Where a high forward reach is over an obstruction, the clear floor or ground space shall extend beneath the element for a distance not less than the required reach depth over the obstruction. The high forward reach shall be 48" maximum where the reach depth is 20" maximum. Where the reach depth exceeds 20", the high forward reach shall be 44" maximum and the reach depth shall be 25" maximum.

**308.3 Side Reach.**

**308.3.1 Unobstructed.** Where a clear floor or ground space allows a parallel approach to an object and the side reach is unobstructed, the high side reach shall be 48" maximum and the low side reach shall be 15" minimum above the floor or ground.

**Exception:** Existing elements shall be permitted at 54" maximum above the floor or ground.

**308.3.2 Obstructed High Reach.** Where a clear floor or ground space allows a parallel approach to an object and the high side reach is over an obstruction, the height of the obstruction shall be 34" maximum and the depth of the obstruction shall 24" maximum. The high side reach shall be 48" maximum for a reach depth of 10" maximum. Where the reach depth exceeds 10", the high side reach shall be 46" maximum for a reach depth of 24" maximum.

311 W Evergreen Blvd. Suite 110  
Vancouver, WA 98660  
p | 709.280.2530

preliminary  
not for  
construction

CONSULTANT:

1750 SW Skyline Blvd. Suite 229  
Portland, OR 97221  
p | 503.546.3755

M Consulting Engineers  
2007 S.E. Ash St.  
Portland, OR 97214  
PHN: (503) 234-0548  
FAX: (503) 234-0677  
CONTACT: WWW.MFIA-ENG.COM

LOT 3

LOW RISE  
APARTMENTS

4306-4308 N Gantenbein  
Ave.  
Portland, OR 97217

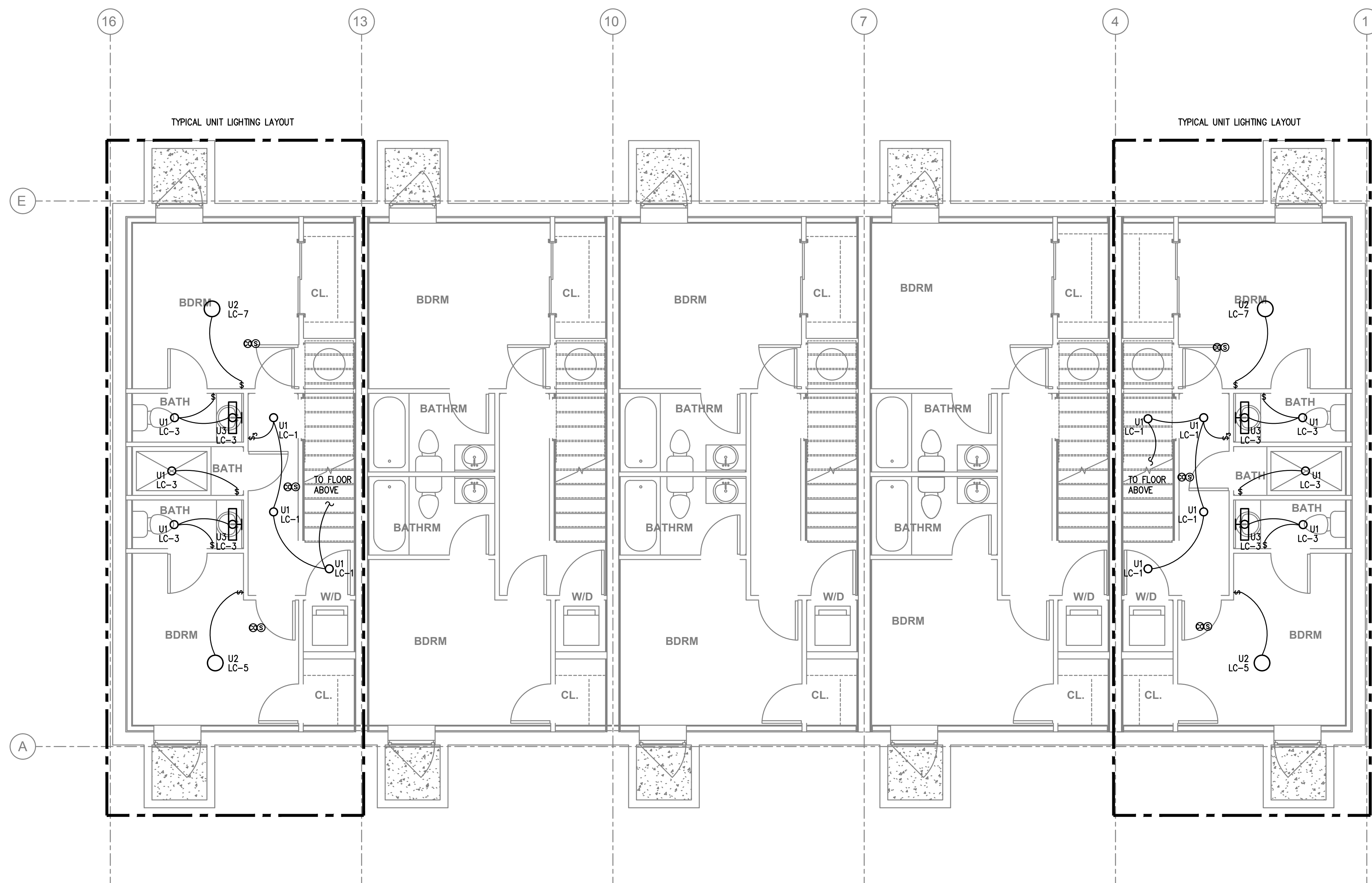
Permit Set

PROJECT ABBREVIATION: LOT3  
DRAWN BY:  
DATE ISSUED: Issue Date

electrical schedules  
& details

E111

Covalent Architecture, LLC © 2020



1 BASEMENT LEVEL LIGHTING PLAN  
 E200 SCALE: 1/4" = 1'-0"

**GENERAL NOTES:**

- A. ELECTRICAL DRAWINGS ARE DIAGRAMMATICAL AND MAY NOT ACCURATELY REFLECT ACTUAL CONSTRUCTION CONDITIONS. THE ELECTRICAL CONTRACTOR SHALL BE RESPONSIBLE FOR COORDINATING THE INSTALLATION OF ALL ELECTRICAL EQUIPMENT, WITH ALL TRADES PRIOR TO AND DURING CONSTRUCTION.
- B. THE ELECTRICAL CONTRACTOR SHALL REFER TO THE ARCHITECTURAL DRAWINGS FOR ALL MOUNTING HEIGHTS AND FINISHES OF DEVICES AND FIXTURES.
- C. REFER TO SHEET E111 FOR TYPICAL UNIT LOAD CENTER DIRECTORIES.
- D. ALL LIGHT SWITCHES SHALL BE ROCKER STYLE, SUCH AS LEVITON DECORA, OR APPROVED EQUAL.
- E. THE ELECTRICAL CONTRACTOR SHALL REFER TO THE MECHANICAL PLAN SHEETS AND COORDINATE WITH THE MECHANICAL INSTALLER TO AVOID CONFLICTS BETWEEN HVAC EQUIPMENT AND LIGHT FIXTURES WITHIN THE APARTMENT UNITS.
- F. PROVIDE ROUGH IN ONLY FOR FIRE ALARM DEVICES PROVIDED AND INSTALLED BY OTHERS. DEVICES SHOWN ON THE PLANS ARE FOR REFERENCE ONLY.
- G. PROVIDE ROUGH IN ONLY FOR TELECOM DEVICES PROVIDED AND INSTALLED BY OTHERS. DEVICES SHOWN ON THE PLANS ARE FOR REFERENCE ONLY.
- H. REFER TO SHEET E112 FOR TYPICAL BATHROOM LIGHT SWITCHING WIRING DIAGRAM.

**KEYED NOTES:**

- 1. EXTERIOR BUILDING LIGHTS ON "HOUSE" POWER TO BE PROVIDED WITH DUSK-TILL-DAWN LIGHTING CONTROL VIA EITHER ROOF MOUNTED PHOTOCELL OR MECHANICAL TIME CLOCK PER OWNERS DIRECTION.
- 2. EGRESS LIGHT FIXTURE TO BE MOUNTED AT 8FT AFF, MINIMUM.

311 W Evergreen Blvd, Suite 110  
 Vancouver, WA 98660  
 p | 709.280.2530

preliminary  
not for  
construction

CONSULTANT:

1750 SW Skyline Blvd, Suite 229  
 Portland, OR 97221  
 p | 503.546.3755

**M** Consulting Engineers  
**E** 2007 S.E. Ash St.  
**A** Portland, OR 97214  
**INC.** PHN: (503) 234-0548  
 FAX: (503) 234-0677  
 CONTACT: WWW.MEIA-ENG.COM

**LOT 3**

**LOW RISE APARTMENTS**

4306-4308 N Gantenbein Ave.  
 Portland, OR 97217

**Permit Set**

PROJECT ABBREVIATION: LOT3  
 DRAWN BY: dmt  
 DATE ISSUED: Issue Date

**basement level lighting plan**

**E200**

preliminary  
not for  
construction

CONSULTANT:

1750 SW Skyline Blvd, Suite 229  
 Portland, OR 97221  
 p | 503.546.3755

**M** Consulting Engineers  
**E** 2007 S.E. Ash St.  
**A** Portland, OR 97214  
**INC.** PHN: (503) 234-0548  
 FAX: (503) 234-0677  
 WWW.MEIA-ENG.COM  
 CONTACT:

**GENERAL NOTES:**

- A. ELECTRICAL DRAWINGS ARE DIAGRAMMATICAL AND MAY NOT ACCURATELY REFLECT ACTUAL CONSTRUCTION CONDITIONS. THE ELECTRICAL CONTRACTOR SHALL BE RESPONSIBLE FOR COORDINATING THE INSTALLATION OF ALL ELECTRICAL EQUIPMENT, WITH ALL TRADES PRIOR TO AND DURING CONSTRUCTION.
- B. THE ELECTRICAL CONTRACTOR SHALL REFER TO THE ARCHITECTURAL DRAWINGS FOR ALL MOUNTING HEIGHTS AND FINISHES OF DEVICES AND FIXTURES.
- C. REFER TO SHEET E111 FOR TYPICAL UNIT LOAD CENTER DIRECTORIES.
- D. ALL LIGHT SWITCHES SHALL BE ROCKER STYLE, SUCH AS LEVITON DECORA, OR APPROVED EQUAL.
- E. THE ELECTRICAL CONTRACTOR SHALL REFER TO THE MECHANICAL PLAN SHEETS AND COORDINATE WITH THE MECHANICAL INSTALLER TO AVOID CONFLICTS BETWEEN HVAC EQUIPMENT AND LIGHT FIXTURES WITHIN THE APARTMENT UNITS.
- F. PROVIDE ROUGH IN ONLY FOR FIRE ALARM DEVICES PROVIDED AND INSTALLED BY OTHERS. DEVICES SHOWN ON THE PLANS ARE FOR REFERENCE ONLY.
- G. PROVIDE ROUGH IN ONLY FOR TELECOM DEVICES PROVIDED AND INSTALLED BY OTHERS. DEVICES SHOWN ON THE PLANS ARE FOR REFERENCE ONLY.
- H. REFER TO SHEET E112 FOR TYPICAL BATHROOM LIGHT SWITCHING WIRING DIAGRAM.

**KEYED NOTES:**

- 1. EXTERIOR BUILDING LIGHTS ON "HOUSE" POWER TO BE PROVIDED WITH DUSK-TILL-DAWN LIGHTING CONTROL VIA EITHER ROOF MOUNTED PHOTOCELL OR MECHANICAL TIME CLOCK PER OWNERS DIRECTION.
- 2. EGRESS LIGHT FIXTURE TO BE MOUNTED AT 8FT AFF, MINIMUM.

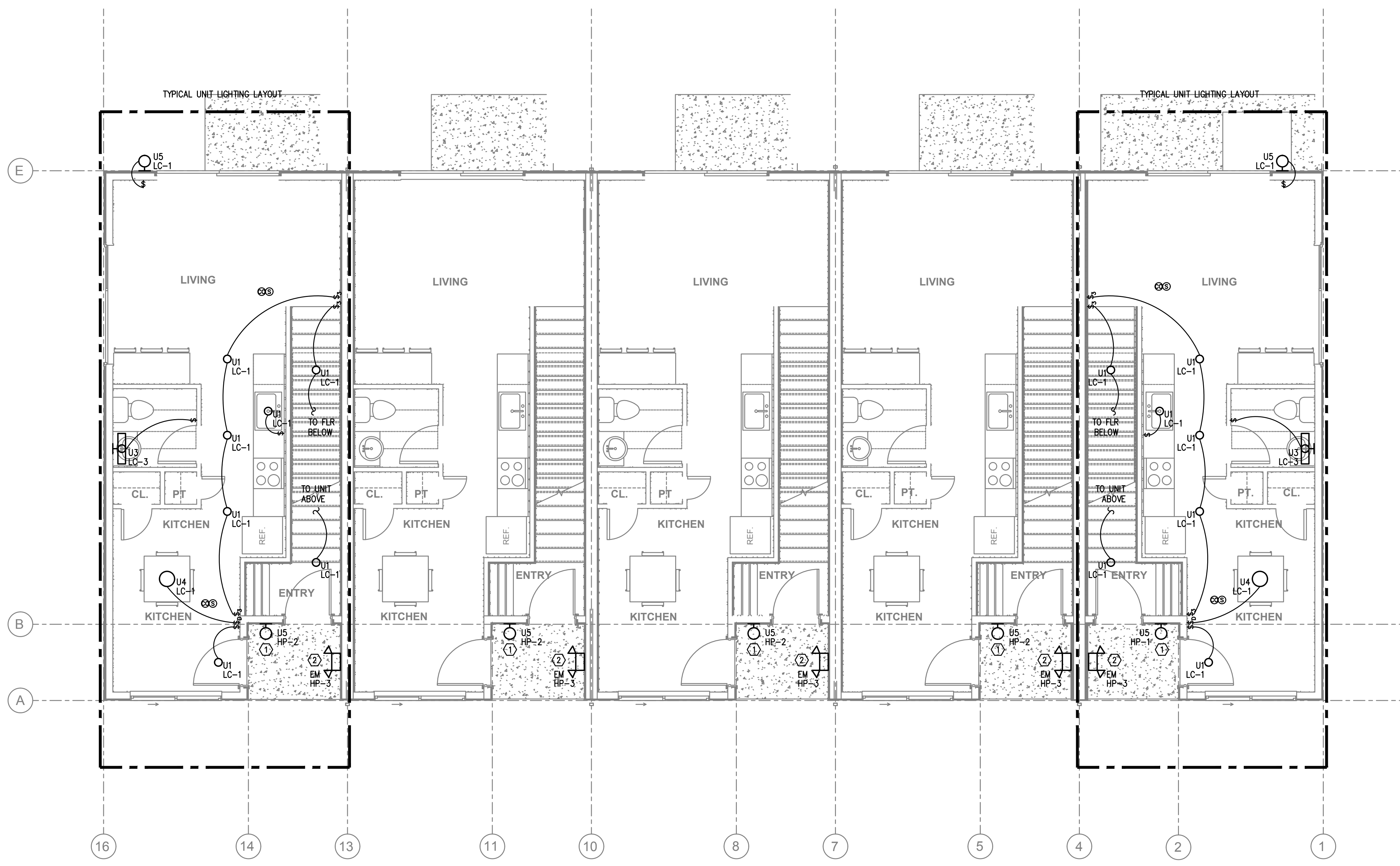
**LOT 3**

**LOW RISE APARTMENTS**

4306-4308 N Gantenbein Ave.  
 Portland, OR 97217

**Permit Set**

PROJECT ABBREVIATION: LOT3  
 DRAWN BY: dmt  
 DATE ISSUED: Issue Date



**1** LEVEL 1 – LIGHTING PLAN  
**E201** SCALE: 1/4" = 1'-0"

**level one  
lighting plan**

**E201**

preliminary  
not for  
construction

CONSULTANT:

1750 SW Skyline Blvd, Suite 229  
 Portland, OR 97214  
 p | 503.546.3755

**M** Consulting Engineers  
 2007 S.E. Ash St.  
 Portland, OR 97214  
 PHN: (503) 234-0548  
 FAX: (503) 234-0677  
 INC. WWW.MFIA-ENG.COM  
 CONTACT:

**GENERAL NOTES:**

- A. ELECTRICAL DRAWINGS ARE DIAGRAMMATICAL AND MAY NOT ACCURATELY REFLECT ACTUAL CONSTRUCTION CONDITIONS. THE ELECTRICAL CONTRACTOR SHALL BE RESPONSIBLE FOR COORDINATING THE INSTALLATION OF ALL ELECTRICAL EQUIPMENT, WITH ALL TRADES PRIOR TO AND DURING CONSTRUCTION.
- B. THE ELECTRICAL CONTRACTOR SHALL REFER TO THE ARCHITECTURAL DRAWINGS FOR ALL MOUNTING HEIGHTS AND FINISHES OF DEVICES AND FIXTURES.
- C. REFER TO SHEET E111 FOR TYPICAL UNIT LOAD CENTER DIRECTORIES.
- D. ALL LIGHT SWITCHES SHALL BE ROCKER STYLE, SUCH AS LEVITON DECORA, OR APPROVED EQUAL.
- E. THE ELECTRICAL CONTRACTOR SHALL REFER TO THE MECHANICAL PLAN SHEETS AND COORDINATE WITH THE MECHANICAL INSTALLER TO AVOID CONFLICTS BETWEEN HVAC EQUIPMENT AND LIGHT FIXTURES WITHIN THE APARTMENT UNITS.
- F. PROVIDE ROUGH IN ONLY FOR FIRE ALARM DEVICES PROVIDED AND INSTALLED BY OTHERS. DEVICES SHOWN ON THE PLANS ARE FOR REFERENCE ONLY.
- G. PROVIDE ROUGH IN ONLY FOR TELECOM DEVICES PROVIDED AND INSTALLED BY OTHERS. DEVICES SHOWN ON THE PLANS ARE FOR REFERENCE ONLY.
- H. REFER TO SHEET E112 FOR TYPICAL BATHROOM LIGHT SWITCHING WIRING DIAGRAM.

**KEYED NOTES:**

- 1. EXTERIOR BUILDING LIGHTS ON "HOUSE" POWER TO BE PROVIDED WITH DUSK-TILL-DAWN LIGHTING CONTROL VIA EITHER ROOF MOUNTED PHOTOCELL OR MECHANICAL TIME CLOCK PER OWNERS DIRECTION.
- 2. EGRESS LIGHT FIXTURE TO BE MOUNTED AT 8FT AFF, MINIMUM.

**LOT 3**

**LOW RISE APARTMENTS**

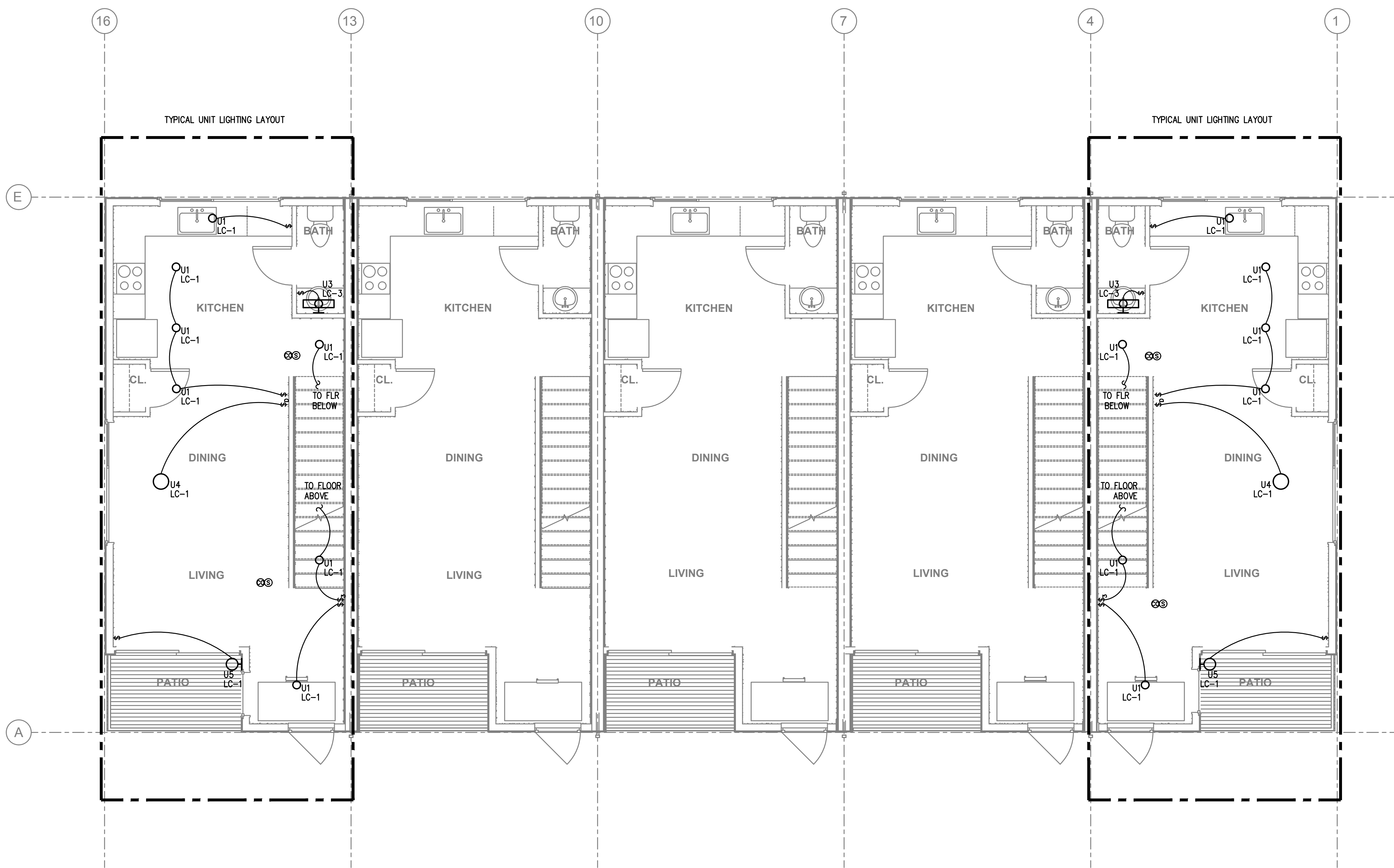
4306-4308 N Gantenbein Ave.  
 Portland, OR 97217

**Permit Set**

PROJECT ABBREVIATION: LOT3  
 DRAWN BY: dmt  
 DATE ISSUED: Issue Date

**level two  
lighting plan**

**E202**



**1** LEVEL 2 — LIGHTING PLAN  
**E202** SCALE: 1/4" = 1'-0"

preliminary  
not for  
construction

CONSULTANT:

1750 SW Skyline Blvd, Suite 229  
 Portland, OR 97211  
 p | 503.546.3755

**M**  
**F**  
**A**  
**INC.** Consulting Engineers  
 2007 S.E. Ash St.  
 Portland, OR 97214  
 PHN: (503) 234-0548  
 FAX: (503) 234-0677  
 CONTACT: WWW.MFIA-ENG.COM

**LOT 3**

**LOW RISE APARTMENTS**

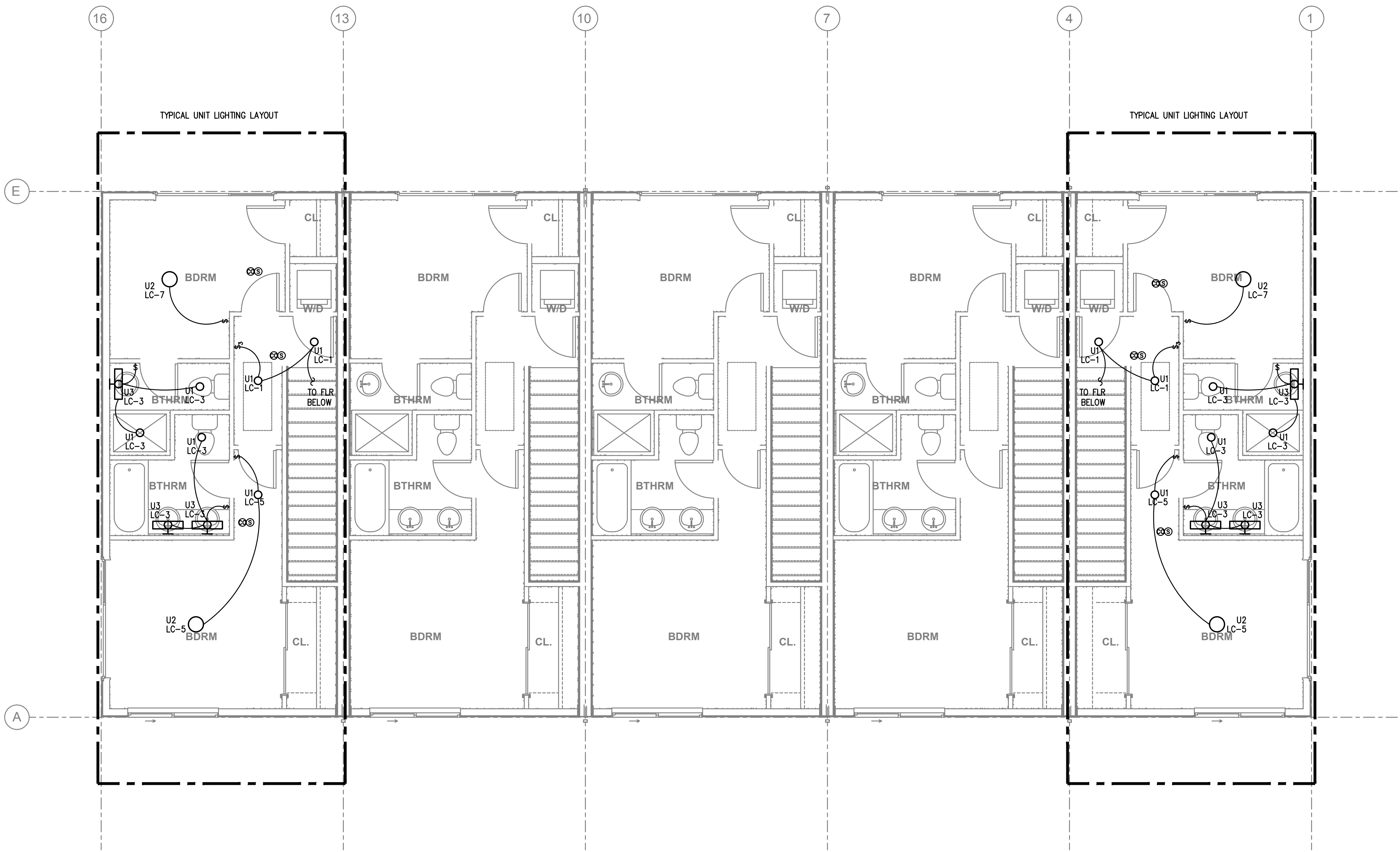
4306-4308 N Gantenbein Ave.  
 Portland, OR 97217

**Permit Set**

PROJECT ABBREVIATION: LOT3  
 DRAWN BY: dmt  
 DATE ISSUED: Issue Date

**level three  
lighting plan**

**E203**



**GENERAL NOTES:**

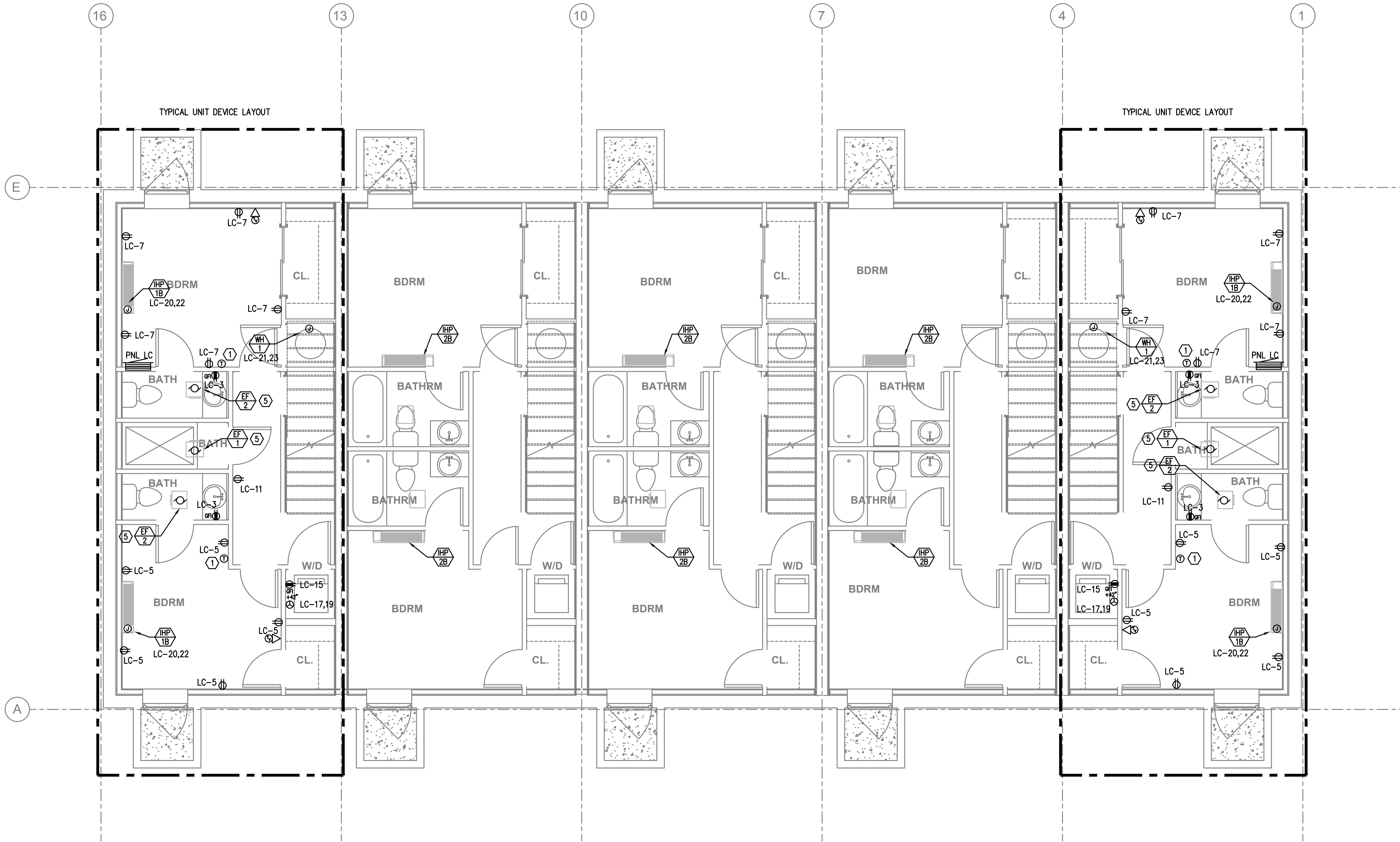
- A. ELECTRICAL DRAWINGS ARE DIAGRAMMATICAL AND MAY NOT ACCURATELY REFLECT ACTUAL CONSTRUCTION CONDITIONS. THE ELECTRICAL CONTRACTOR SHALL BE RESPONSIBLE FOR COORDINATING THE INSTALLATION OF ALL ELECTRICAL EQUIPMENT, WITH ALL TRADES PRIOR TO AND DURING CONSTRUCTION.
- B. THE ELECTRICAL CONTRACTOR SHALL REFER TO THE ARCHITECTURAL DRAWINGS FOR ALL MOUNTING HEIGHTS AND FINISHES OF DEVICES AND FIXTURES.
- C. REFER TO SHEET E111 FOR TYPICAL UNIT LOAD CENTER DIRECTORIES.
- D. ALL LIGHT SWITCHES SHALL BE ROCKER STYLE, SUCH AS LEVITON DECORA, OR APPROVED EQUAL.
- E. THE ELECTRICAL CONTRACTOR SHALL REFER TO THE MECHANICAL PLAN SHEETS AND COORDINATE WITH THE MECHANICAL INSTALLER TO AVOID CONFLICTS BETWEEN HVAC EQUIPMENT AND LIGHT FIXTURES WITHIN THE APARTMENT UNITS.
- F. PROVIDE ROUGH IN ONLY FOR FIRE ALARM DEVICES PROVIDED AND INSTALLED BY OTHERS. DEVICES SHOWN ON THE PLANS ARE FOR REFERENCE ONLY.
- G. PROVIDE ROUGH IN ONLY FOR TELECOM DEVICES PROVIDED AND INSTALLED BY OTHERS. DEVICES SHOWN ON THE PLANS ARE FOR REFERENCE ONLY.
- H. REFER TO SHEET E112 FOR TYPICAL BATHROOM LIGHT SWITCHING WIRING DIAGRAM.

**KEYED NOTES:**

- 1. EXTERIOR BUILDING LIGHTS ON "HOUSE" POWER TO BE PROVIDED WITH DUSK-TILL-DAWN LIGHTING CONTROL VIA EITHER ROOF MOUNTED PHOTOCELL OR MECHANICAL TIME CLOCK PER OWNERS DIRECTION.
- 2. EGRESS LIGHT FIXTURE TO BE MOUNTED AT 8FT AFF, MINIMUM.

**1**  
**E203** LEVEL 3 – LIGHTING PLAN  
 SCALE: 1/4" = 1'-0"





**1** BASEMENT LEVEL POWER PLAN  
 E300 SCALE: 1/4" = 1'-0"

**GENERAL POWER NOTES:**

- A. ELECTRICAL DRAWINGS ARE DIAGRAMMATICAL AND MAY NOT ACCURATELY REFLECT ACTUAL CONSTRUCTION CONDITIONS. THE ELECTRICAL CONTRACTOR SHALL BE RESPONSIBLE FOR COORDINATING THE INSTALLATION OF ALL ELECTRICAL EQUIPMENT, WITH ALL TRADES PRIOR TO AND DURING CONSTRUCTION.
- B. WORK SHALL BE IN ACCORDANCE WITH ALL APPLICABLE LOCAL, STATE AND NATIONAL CODES.
- C. ELECTRICAL CONTRACTOR SHALL PROVIDE INSTALLATION AND FINAL CONNECTION OF THERMOSTATS AS REQUIRED. CONSULT MECHANICAL CONTRACTOR FOR EXACT REQUIREMENTS PRIOR TO ROUGH IN.
- D. THE ELECTRICAL CONTRACTOR SHALL REFER TO THE ARCHITECTURAL DRAWINGS FOR ALL MOUNTING HEIGHTS AND FINISHES OF DEVICES AND FIXTURES.
- E. COORDINATE WITH DIVISION 23 FOR EXACT LOCATION AND POWER REQUIREMENTS OF ALL MECHANICAL EQUIPMENT PRIOR TO ROUGH IN. REFER TO SHEET E112 FOR MECHANICAL EQUIPMENT SCHEDULE.
- F. SERVICE ENTRANCE AND METERING EQUIPMENT SHOWN TO APPROXIMATE SCALE, BASED ON SIEMENS PRODUCTS. CONTRACTOR SHALL BE RESPONSIBLE FOR ENDURING THAT INSTALLED EQUIPMENT FITS THE SPACE PROVIDED AND THAT ALL REQUIRED WORKING CLEARANCES ARE PROVIDED.
- G. PROVIDE ROUGH IN ONLY FOR FIRE ALARM DEVICES PROVIDED AND INSTALLED BY OTHERS. DEVICES SHOWN ON THE PLANS ARE FOR REFERENCE ONLY.
- H. PROVIDE ROUGH IN ONLY FOR TELECOM DEVICES PROVIDED AND INSTALLED BY OTHERS. DEVICES SHOWN ON THE PLANS ARE FOR REFERENCE ONLY.

**KEYED NOTES:**

- 1. PROVIDE WIRE CONNECTION FOR THERMOSTAT(S). COORDINATE WITH MECHANICAL INSTALLER FOR EXACT LOCATION AND POWER REQUIREMENTS PRIOR TO ROUGH IN. THERMOSTATS TO BE MOUNTED AT 48" AFF MAX. TO HIGHEST OPERABLE PART.
- 2. PROVIDE ONE 20A, 120V, 1P GFCI DUPLEX RECEPTACLE UNDER KITCHEN SINK FOR DISPOSAL POWER CONNECTION. DISPOSAL TO BE PROVIDED WITH "SAFEAIRE" SINK DISPOSAL AIR SWITCH, MOUNTED PER ARCHITECT'S DIRECTION. VERIFY DEVICE FINISH WITH ARCHITECT PRIOR TO ORDERING.
- 3. PROVIDE ONE 15A, RECEPTACLE CIRCUIT FROM TENANT LOAD CENTER FOR TELECOM SMART PANEL. COORDINATE WORK WITH SERVICE PROVIDER FOR EXACT LOCATION AND FINAL CONNECTION.
- 4. FOR RANGE HOODS/MICROWAVES PROVIDED WITH A CORD & PLUG SET, PROVIDE A 20A DUPLEX RECEPTACLE LOCATED INSIDE THE OVERHEAD CABINET. HARDWIRED APPLIANCES MAY BE CIRCUITED VIA J-BOX MOUNTED FLUSH OR RECESSED INTO THE WALL DIRECTLY BEHIND THE APPLIANCE.
- 5. REFER TO BATHROOM SWITCHING DIAGRAMS ON E112 FOR ADDITIONAL INFORMATION.

311 W Evergreen Blvd. Suite 110  
 Vancouver, WA 98660  
 p | 709.280.2530

preliminary  
not for  
construction

CONSULTANT:

1750 SW Skyline Blvd. Suite 229  
 Portland, OR 97221  
 p | 503.546.3755

**M** Consulting Engineers  
**E** 2007 S.E. Ash St.  
**A** Portland, OR 97214  
**INC.** PHN: (503) 234-0548  
 FAX: (503) 234-0677  
 CONTACT: WWW.MFIA-ENG.COM

**LOT 3**

**LOW RISE APARTMENTS**

4306-4308 N Gantenbein Ave.  
 Portland, OR 97217

**Permit Set**

PROJECT ABBREVIATION: LOT3  
 DRAWN BY: dmt  
 DATE ISSUED: Issue Date

**basement level power plan**

**E300**

preliminary  
not for  
construction

CONSULTANT:

1750 SW Skyline Blvd, Suite 229  
 Portland, OR 97221  
 p | 503.546.3755

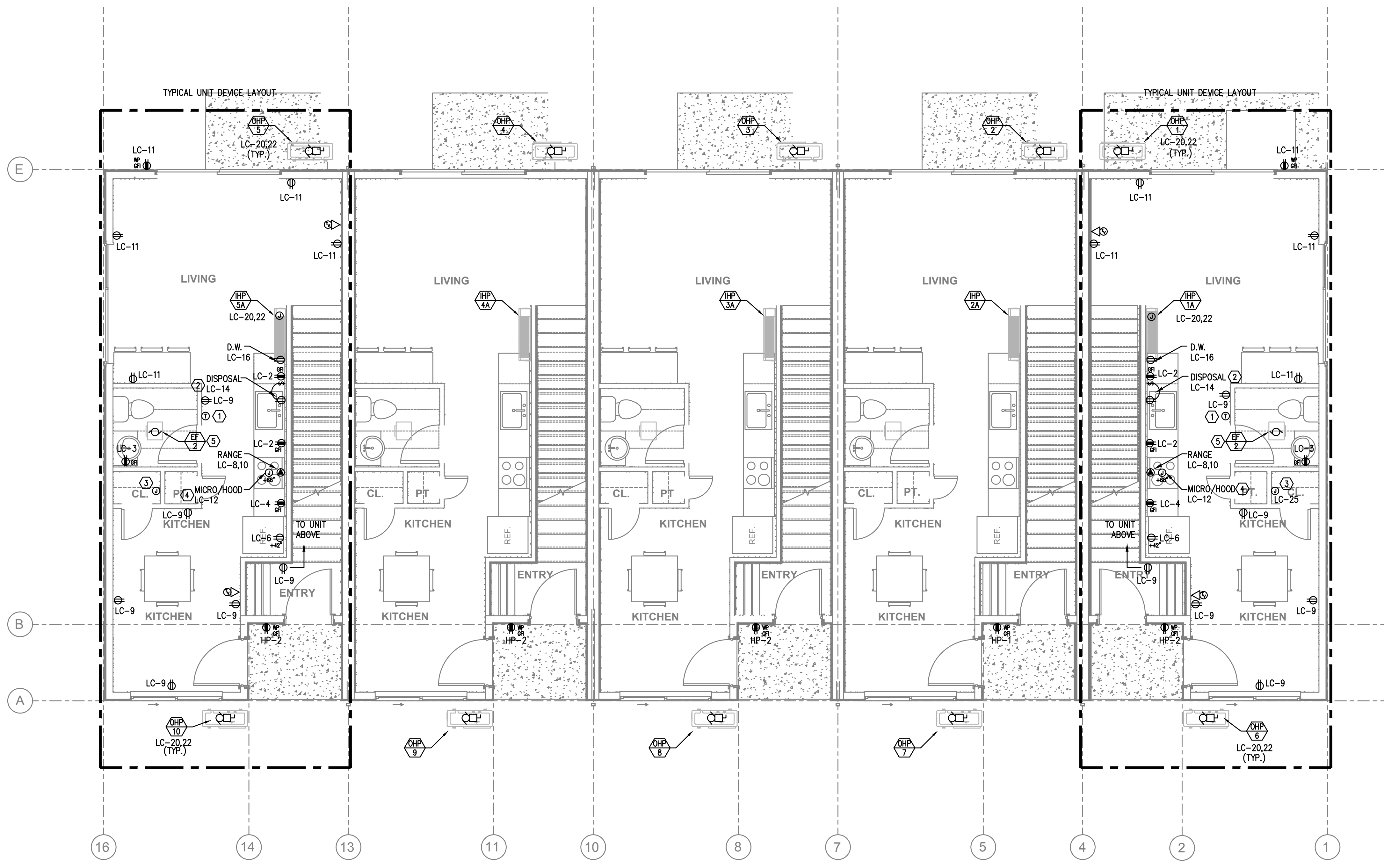
**M** Consulting Engineers  
 2007 S.E. Ash St.  
 Portland, OR 97214  
 PHN: (503) 234-0548  
 FAX: (503) 234-0677  
 CONTACT: WWW.MFIA-ENG.COM

**GENERAL POWER NOTES:**

- A. ELECTRICAL DRAWINGS ARE DIAGRAMMATICAL AND MAY NOT ACCURATELY REFLECT ACTUAL CONSTRUCTION CONDITIONS. THE ELECTRICAL CONTRACTOR SHALL BE RESPONSIBLE FOR COORDINATING THE INSTALLATION OF ALL ELECTRICAL EQUIPMENT, WITH ALL TRADES PRIOR TO AND DURING CONSTRUCTION.
- B. WORK SHALL BE IN ACCORDANCE WITH ALL APPLICABLE LOCAL, STATE AND NATIONAL CODES.
- C. ELECTRICAL CONTRACTOR SHALL PROVIDE INSTALLATION AND FINAL CONNECTION OF THERMOSTATS AS REQUIRED. CONSULT MECHANICAL CONTRACTOR FOR EXACT REQUIREMENTS PRIOR TO ROUGH IN.
- D. THE ELECTRICAL CONTRACTOR SHALL REFER TO THE ARCHITECTURAL DRAWINGS FOR ALL MOUNTING HEIGHTS AND FINISHES OF DEVICES AND FIXTURES.
- E. COORDINATE WITH DIVISION 23 FOR EXACT LOCATION AND POWER REQUIREMENTS OF ALL MECHANICAL EQUIPMENT PRIOR TO ROUGH IN. REFER TO SHEET E112 FOR MECHANICAL EQUIPMENT SCHEDULE.
- F. SERVICE ENTRANCE AND METERING EQUIPMENT SHOWN TO APPROXIMATE SCALE, BASED ON SIEMENS PRODUCTS. CONTRACTOR SHALL BE RESPONSIBLE FOR ENDURING THAT INSTALLED EQUIPMENT FITS THE SPACE PROVIDED AND THAT ALL REQUIRED WORKING CLEARANCES ARE PROVIDED.
- G. PROVIDE ROUGH IN ONLY FOR FIRE ALARM DEVICES PROVIDED AND INSTALLED BY OTHERS. DEVICES SHOWN ON THE PLANS ARE FOR REFERENCE ONLY.
- H. PROVIDE ROUGH IN ONLY FOR TELECOM DEVICES PROVIDED AND INSTALLED BY OTHERS. DEVICES SHOWN ON THE PLANS ARE FOR REFERENCE ONLY.

**KEYED NOTES:**

- 1. PROVIDE WIRE CONNECTION FOR THERMOSTAT(S). COORDINATE WITH MECHANICAL INSTALLER FOR EXACT LOCATION AND POWER REQUIREMENTS PRIOR TO ROUGH IN. THERMOSTATS TO BE MOUNTED AT 48" AFF MAX. TO HIGHEST OPERABLE PART.
- 2. PROVIDE ONE 20A, 120V, 1P GFCI DUPLEX RECEPTACLE UNDER KITCHEN SINK FOR DISPOSAL POWER CONNECTION. DISPOSAL TO BE PROVIDED WITH "SAFEAIRE" SINK DISPOSAL AIR SWITCH, MOUNTED PER ARCHITECT'S DIRECTION. VERIFY DEVICE FINISH WITH ARCHITECT PRIOR TO ORDERING.
- 3. PROVIDE ONE 15A, RECEPTACLE CIRCUIT FROM TENANT LOAD CENTER FOR TELECOM SMART PANEL. COORDINATE WORK WITH SERVICE PROVIDER FOR EXACT LOCATION AND FINAL CONNECTION.
- 4. FOR RANGE HOODS/MICROWAVES PROVIDED WITH A CORD & PLUG SET, PROVIDE A 20A DUPLEX RECEPTACLE LOCATED INSIDE THE OVERHEAD CABINET. HARDWIRED APPLIANCES MAY BE CIRCUITED VIA J-BOX MOUNTED FLUSH OR RECESSED INTO THE WALL DIRECTLY BEHIND THE APPLIANCE.
- 5. REFER TO BATHROOM SWITCHING DIAGRAMS ON E112 FOR ADDITIONAL INFORMATION.



**1** LEVEL 1 - POWER PLAN  
 E301 SCALE: 1/4" = 1'-0"

**LOT 3**

**LOW RISE APARTMENTS**

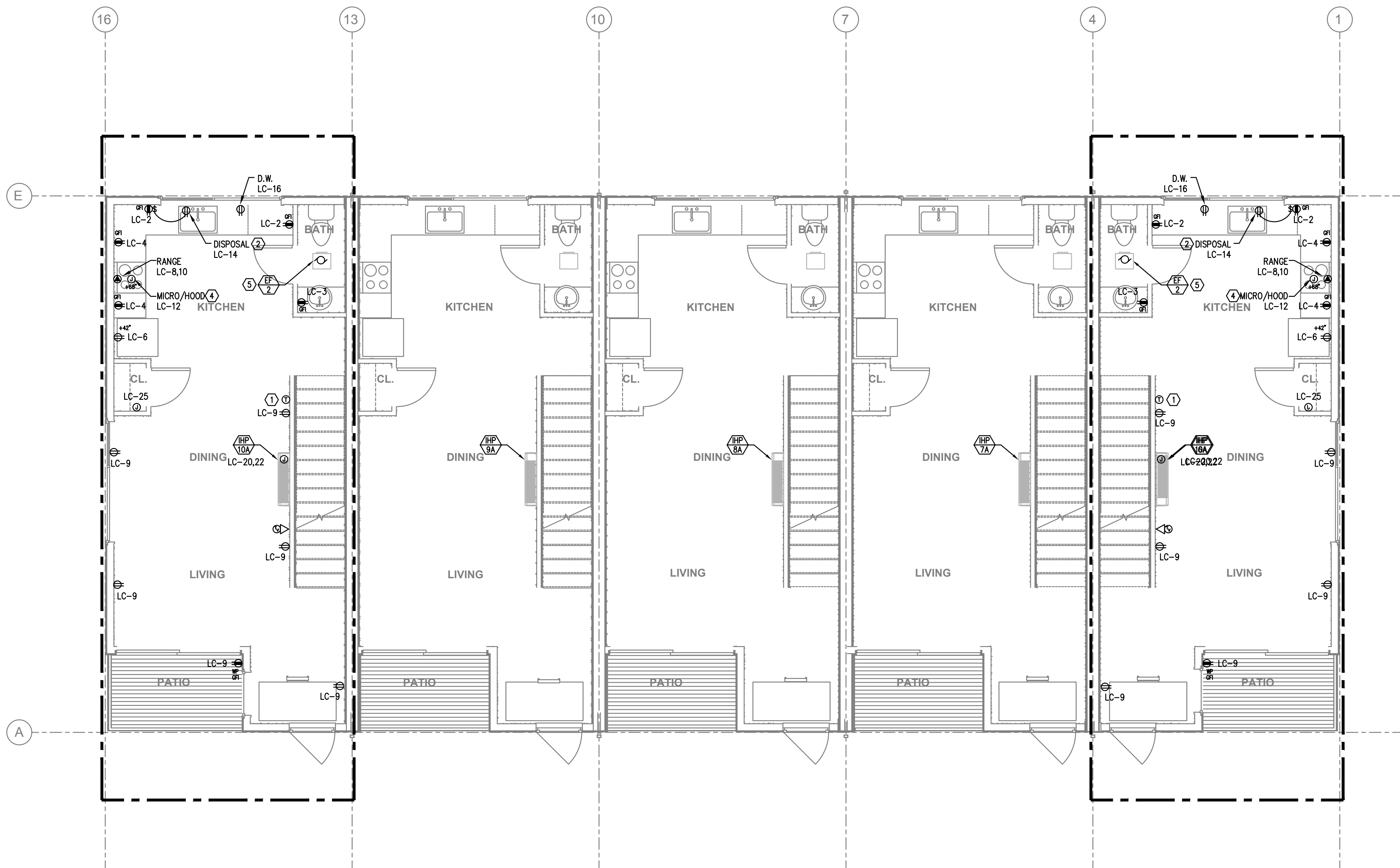
4306-4308 N Gantenbein Ave.  
 Portland, OR 97217

**Permit Set**

PROJECT ABBREVIATION: LOT3  
 DRAWN BY: dmt  
 DATE ISSUED: Issue Date

**level one  
 power plan**

**E301**



1 LEVEL 2 - POWER PLAN  
 E302 SCALE: 1/4" = 1'-0"

**GENERAL POWER NOTES:**

- A. ELECTRICAL DRAWINGS ARE DIAGRAMMATICAL AND MAY NOT ACCURATELY REFLECT ACTUAL CONSTRUCTION CONDITIONS. THE ELECTRICAL CONTRACTOR SHALL BE RESPONSIBLE FOR COORDINATING THE INSTALLATION OF ALL ELECTRICAL EQUIPMENT, WITH ALL TRADES PRIOR TO AND DURING CONSTRUCTION.
- B. WORK SHALL BE IN ACCORDANCE WITH ALL APPLICABLE LOCAL, STATE AND NATIONAL CODES.
- C. ELECTRICAL CONTRACTOR SHALL PROVIDE INSTALLATION AND FINAL CONNECTION OF THERMOSTATS AS REQUIRED. CONSULT MECHANICAL CONTRACTOR FOR EXACT REQUIREMENTS PRIOR TO ROUGH IN.
- D. THE ELECTRICAL CONTRACTOR SHALL REFER TO THE ARCHITECTURAL DRAWINGS FOR ALL MOUNTING HEIGHTS AND FINISHES OF DEVICES AND FIXTURES.
- E. COORDINATE WITH DIVISION 23 FOR EXACT LOCATION AND POWER REQUIREMENTS OF ALL MECHANICAL EQUIPMENT PRIOR TO ROUGH IN. REFER TO SHEET E112 FOR MECHANICAL EQUIPMENT SCHEDULE.
- F. SERVICE ENTRANCE AND METERING EQUIPMENT SHOWN TO APPROXIMATE SCALE, BASED ON SIEMENS PRODUCTS. CONTRACTOR SHALL BE RESPONSIBLE FOR ENDURING THAT INSTALLED EQUIPMENT FITS THE SPACE PROVIDED AND THAT ALL REQUIRED WORKING CLEARANCES ARE PROVIDED.
- G. PROVIDE ROUGH IN ONLY FOR FIRE ALARM DEVICES PROVIDED AND INSTALLED BY OTHERS. DEVICES SHOWN ON THE PLANS ARE FOR REFERENCE ONLY.
- H. PROVIDE ROUGH IN ONLY FOR TELECOM DEVICES PROVIDED AND INSTALLED BY OTHERS. DEVICES SHOWN ON THE PLANS ARE FOR REFERENCE ONLY.

**KEYED NOTES:**

- 1. PROVIDE WIRE CONNECTION FOR THERMOSTAT(S). COORDINATE WITH MECHANICAL INSTALLER FOR EXACT LOCATION AND POWER REQUIREMENTS PRIOR TO ROUGH IN. THERMOSTATS TO BE MOUNTED AT 48" AFF MAX. TO HIGHEST OPERABLE PART.
- 2. PROVIDE ONE 20A, 120V, 1P GFCI DUPLEX RECEPTACLE UNDER KITCHEN SINK FOR DISPOSAL POWER CONNECTION. DISPOSAL TO BE PROVIDED WITH "SAFEAIRE" SINK DISPOSAL AIR SWITCH, MOUNTED PER ARCHITECT'S DIRECTION. VERIFY DEVICE FINISH WITH ARCHITECT PRIOR TO ORDERING.
- 3. PROVIDE ONE 15A, RECEPTACLE CIRCUIT FROM TENANT LOAD CENTER FOR TELECOM SMART PANEL. COORDINATE WORK WITH SERVICE PROVIDER FOR EXACT LOCATION AND FINAL CONNECTION.
- 4. FOR RANGE HOODS/MICROWAVES PROVIDED WITH A CORD & PLUG SET, PROVIDE A 20A DUPLEX RECEPTACLE LOCATED INSIDE THE OVERHEAD CABINET. HARDWIRED APPLIANCES MAY BE CIRCUITED VIA J-BOX MOUNTED FLUSH OR RECESSED INTO THE WALL DIRECTLY BEHIND THE APPLIANCE.
- 5. REFER TO BATHROOM SWITCHING DIAGRAMS ON E112 FOR ADDITIONAL INFORMATION.

311 W Evergreen Blvd, Suite 110  
 Vancouver, WA 98660  
 p | 709.280.2530

preliminary  
not for  
construction

CONSULTANT:

1750 SW Skyline Blvd, Suite 229  
 Portland, OR 97221  
 p | 503.546.3755

**M** Consulting Engineers  
**E** 2007 S.E. Ash St.  
**A** Portland, OR 97214  
**INC.** PHN: (503) 234-0548  
 FAX: (503) 234-0677  
 CONTACT: WWW.MFIA-ENG.COM

**LOT 3**

**LOW RISE APARTMENTS**

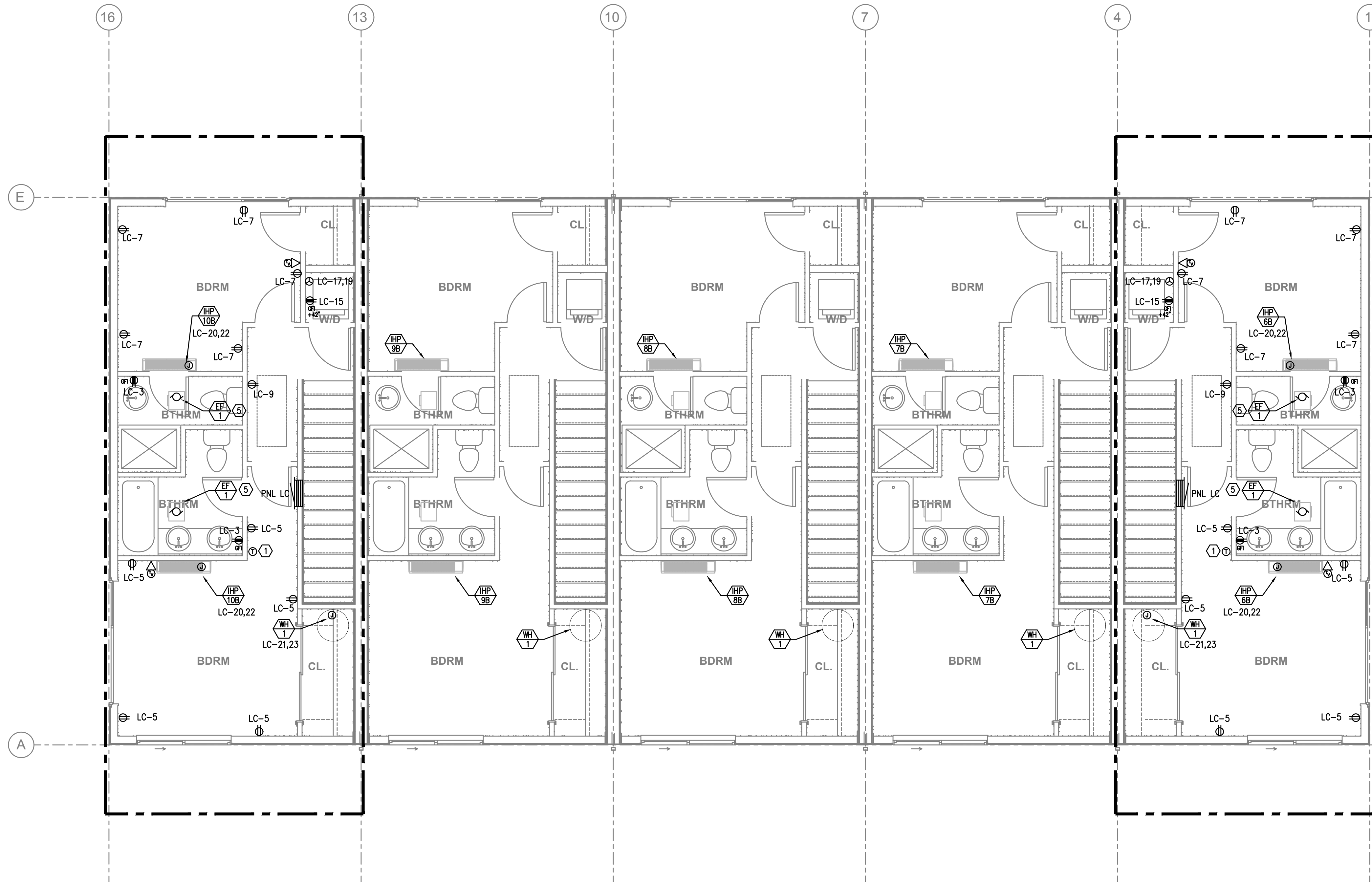
4306-4308 N Gantenbein Ave.  
 Portland, OR 97217

**Permit Set**

PROJECT ABBREVIATION: LOT3  
 DRAWN BY: dmt  
 DATE ISSUED: Issue Date

**level two  
 power plan**

**E302**



**1** LEVEL 3 – POWER PLAN  
**E303** SCALE: 1/4" = 1'-0"

**GENERAL POWER NOTES:**

- A. ELECTRICAL DRAWINGS ARE DIAGRAMMATICAL AND MAY NOT ACCURATELY REFLECT ACTUAL CONSTRUCTION CONDITIONS. THE ELECTRICAL CONTRACTOR SHALL BE RESPONSIBLE FOR COORDINATING THE INSTALLATION OF ALL ELECTRICAL EQUIPMENT, WITH ALL TRADES PRIOR TO AND DURING CONSTRUCTION.
- B. WORK SHALL BE IN ACCORDANCE WITH ALL APPLICABLE LOCAL, STATE AND NATIONAL CODES.
- C. ELECTRICAL CONTRACTOR SHALL PROVIDE INSTALLATION AND FINAL CONNECTION OF THERMOSTATS AS REQUIRED. CONSULT MECHANICAL CONTRACTOR FOR EXACT REQUIREMENTS PRIOR TO ROUGH IN.
- D. THE ELECTRICAL CONTRACTOR SHALL REFER TO THE ARCHITECTURAL DRAWINGS FOR ALL MOUNTING HEIGHTS AND FINISHES OF DEVICES AND FIXTURES.
- E. COORDINATE WITH DIVISION 23 FOR EXACT LOCATION AND POWER REQUIREMENTS OF ALL MECHANICAL EQUIPMENT PRIOR TO ROUGH IN. REFER TO SHEET E112 FOR MECHANICAL EQUIPMENT SCHEDULE.
- F. SERVICE ENTRANCE AND METERING EQUIPMENT SHOWN TO APPROXIMATE SCALE, BASED ON SIEMENS PRODUCTS. CONTRACTOR SHALL BE RESPONSIBLE FOR ENDURING THAT INSTALLED EQUIPMENT FITS THE SPACE PROVIDED AND THAT ALL REQUIRED WORKING CLEARANCES ARE PROVIDED.
- G. PROVIDE ROUGH IN ONLY FOR FIRE ALARM DEVICES PROVIDED AND INSTALLED BY OTHERS. DEVICES SHOWN ON THE PLANS ARE FOR REFERENCE ONLY.
- H. PROVIDE ROUGH IN ONLY FOR TELECOM DEVICES PROVIDED AND INSTALLED BY OTHERS. DEVICES SHOWN ON THE PLANS ARE FOR REFERENCE ONLY.

**KEYED NOTES:**

- 1. PROVIDE WIRE CONNECTION FOR THERMOSTAT(S). COORDINATE WITH MECHANICAL INSTALLER FOR EXACT LOCATION AND POWER REQUIREMENTS PRIOR TO ROUGH IN. THERMOSTATS TO BE MOUNTED AT 48" AFF MAX. TO HIGHEST OPERABLE PART.
- 2. PROVIDE ONE 20A, 120V, 1P GFCI DUPLEX RECEPTACLE UNDER KITCHEN SINK FOR DISPOSAL POWER CONNECTION. DISPOSAL TO BE PROVIDED WITH "SAFEAIRE" SINK DISPOSAL AIR SWITCH, MOUNTED PER ARCHITECT'S DIRECTION. VERIFY DEVICE FINISH WITH ARCHITECT PRIOR TO ORDERING.
- 3. PROVIDE ONE 15A, RECEPTACLE CIRCUIT FROM TENANT LOAD CENTER FOR TELECOM SMART PANEL. COORDINATE WORK WITH SERVICE PROVIDER FOR EXACT LOCATION AND FINAL CONNECTION.
- 4. FOR RANGE HOODS/MICROWAVES PROVIDED WITH A CORD & PLUG SET, PROVIDE A 20A DUPLEX RECEPTACLE LOCATED INSIDE THE OVERHEAD CABINET. HARDWIRED APPLIANCES MAY BE CIRCUITED VIA J-BOX MOUNTED FLUSH OR RECESSED INTO THE WALL DIRECTLY BEHIND THE APPLIANCE.
- 5. REFER TO BATHROOM SWITCHING DIAGRAMS ON E112 FOR ADDITIONAL INFORMATION.

preliminary  
not for  
construction

311 W Evergreen Blvd, Suite 110  
 Vancouver, WA 98660  
 p | 709.280.2530

CONSULTANT:

1750 SW Skyline Blvd, Suite 229  
 Portland, OR 97221  
 p | 503.546.3755

**M** Consulting Engineers  
**E** 2007 S.E. Ash St.  
**A** Portland, OR 97214  
**INC.** PHN: (503) 234-0548  
 FAX: (503) 234-0677  
 CONTACT: WWW.MFIA-ENG.COM

**LOT 3**

**LOW RISE APARTMENTS**

4306-4308 N Gantenbein Ave.  
 Portland, OR 97217

**Permit Set**

PROJECT ABBREVIATION: LOT3  
 DRAWN BY: dmt  
 DATE ISSUED: Issue Date

**level three  
 power plan**

**E303**