



615 SE JACOBSON STREET  
 PORTLAND, OR 97214  
 503.234.0273 OFFICE  
 503.234.0273 FAX  
 503.234.0273 CELL  
 PAUL@BENTLEYARCHITECT.COM

PAUL L BENTLEY Architect A.I.A. P.C.

1 - ADD #2 2/22/2018

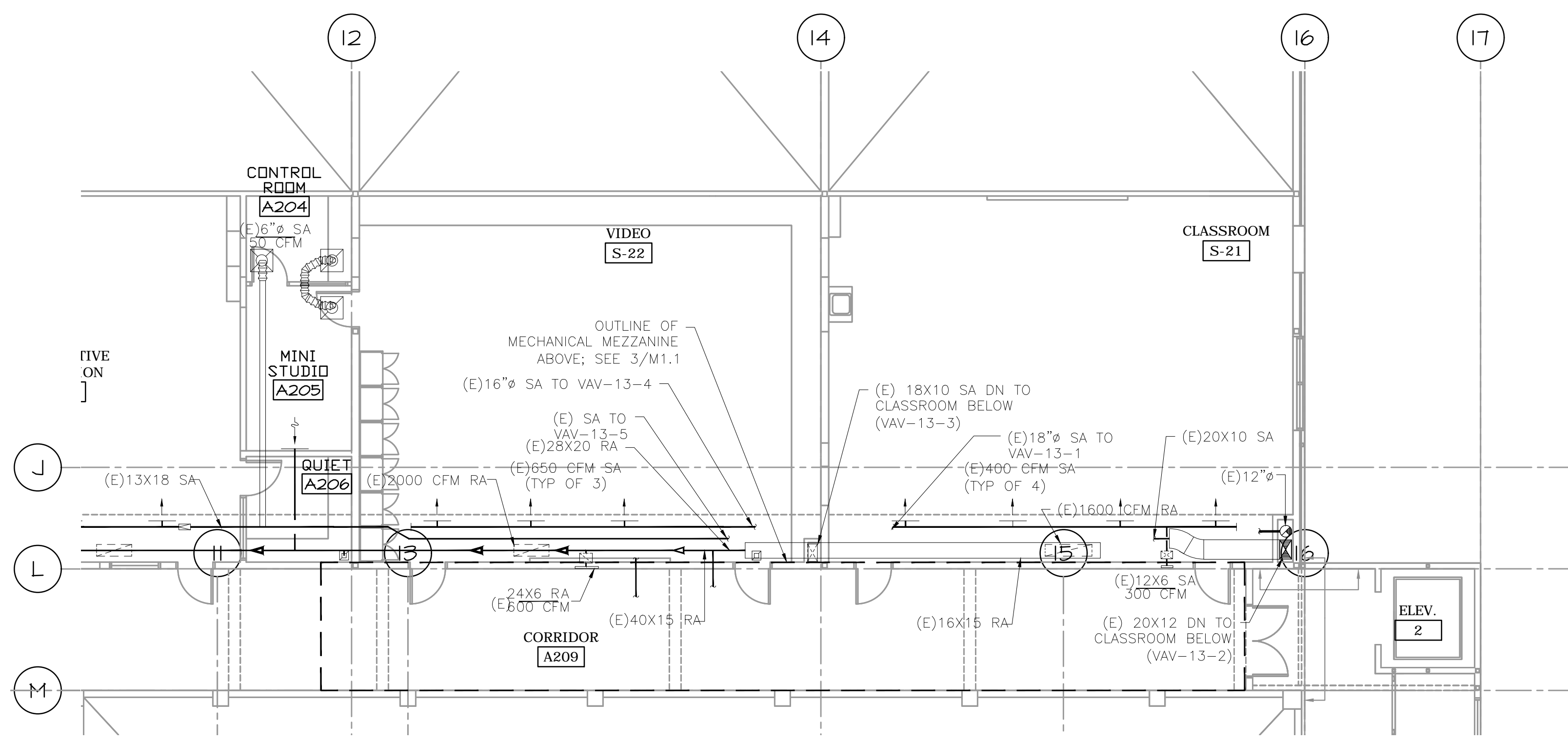
Consulting Engineers  
 2007 S.E. Ash St.  
 Portland, OR 97214  
 PHN: (503) 234-0548  
 FAX: (503) 234-0677  
 WWW.MFIA-ENG.COM  
 CONTACT: Elena von Kamens

A NEW REMODEL PROJECT FOR:  
**SHERWOOD HIGH SCHOOL**  
 16956 SW MEINECKE ROAD  
 SHERWOOD, OR

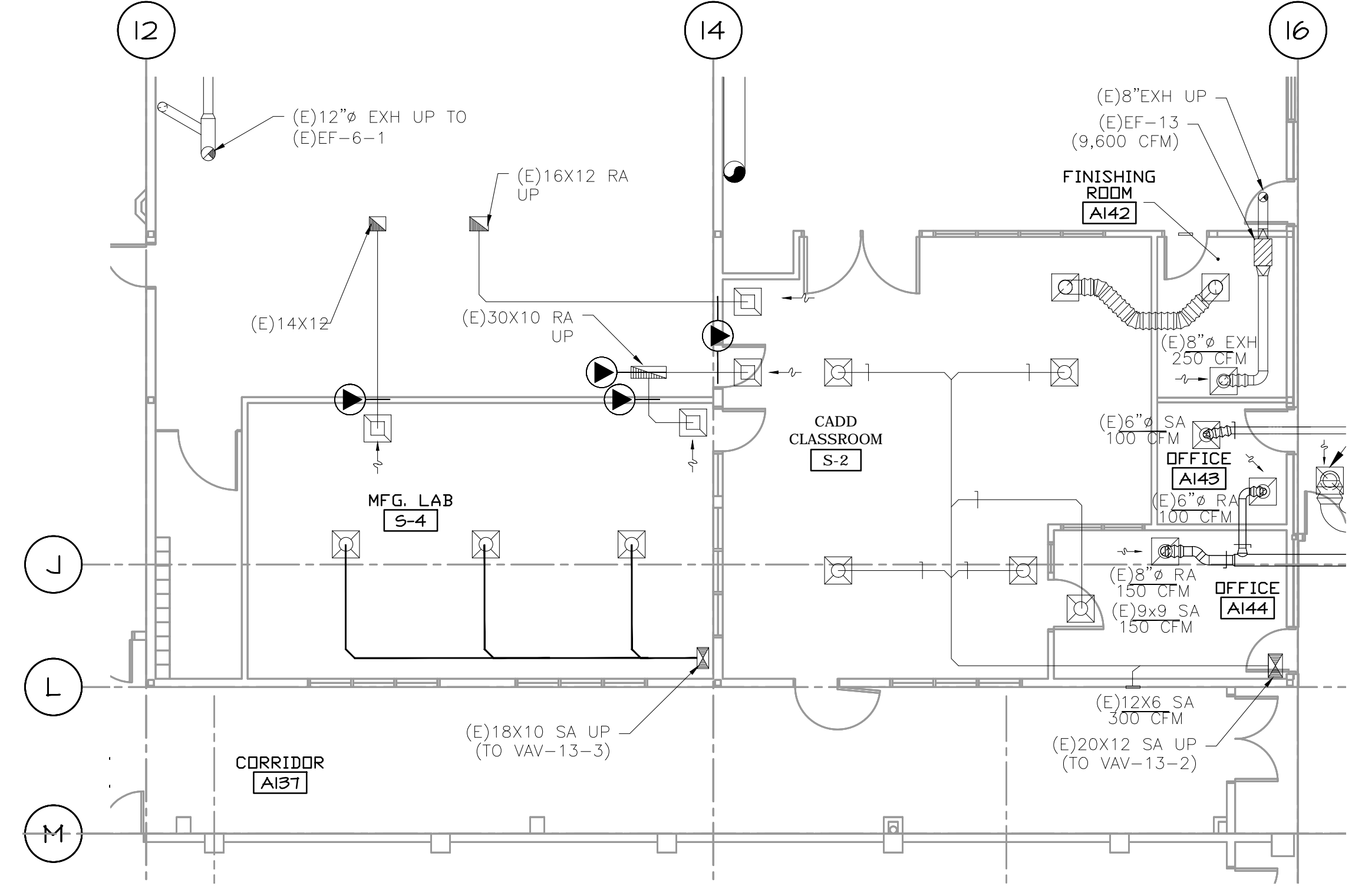


DRAWN BY: EVK  
 CHECKED BY: SWM  
 DATE: 1-30-18  
 TITLE: PARTIAL HVAC FLOOR PLANS  
 SCALE: 1/8" = 1'-0"

SHEET NO:  
**M-1.1**  
 1 OF 6



2 PARTIAL SECOND FLOOR HVAC PLAN  
 M1.1 SCALE: 1/8"=1'-0"



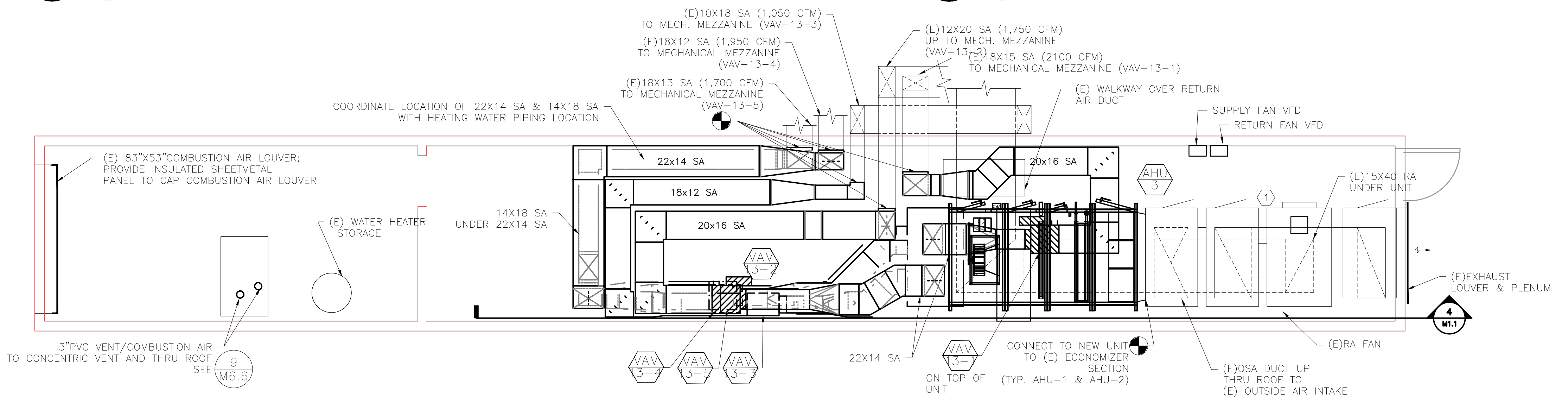
1 PARTIAL FIRST FLOOR HVAC PLAN  
 M1.1 SCALE: 1/8"=1'-0"

**GENERAL SHEET NOTES:**

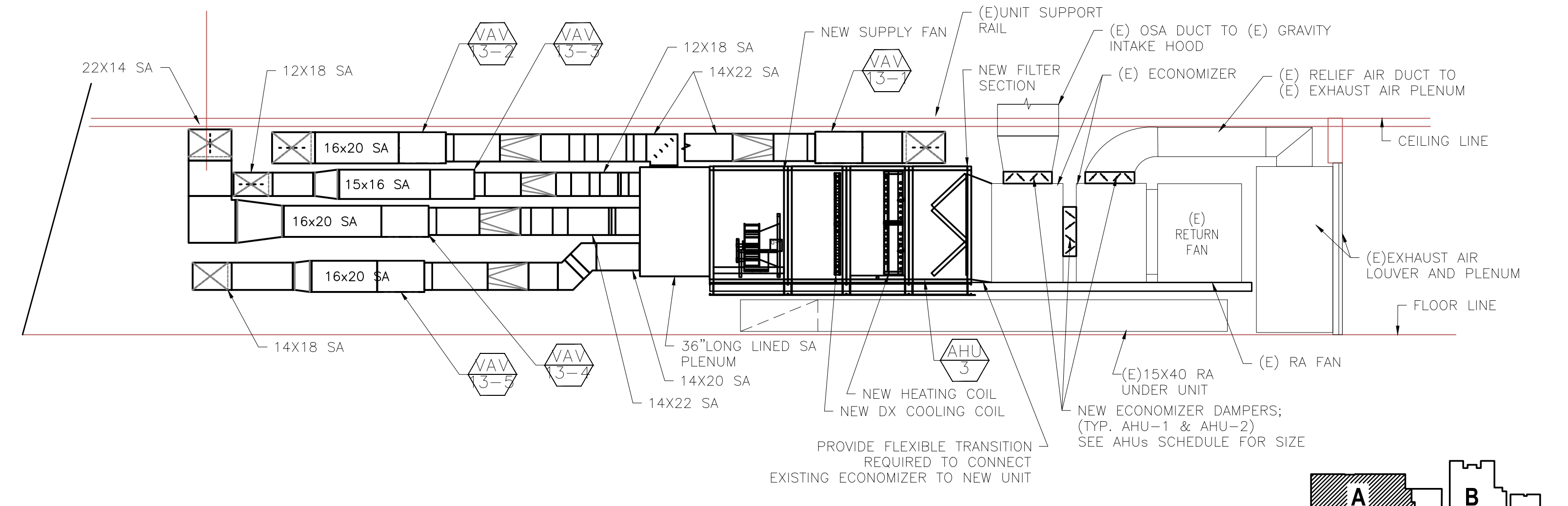
- CONTRACTOR TO VERIFY LOCATION AND SIZES OF EXISTING DUCTWORK, PIPING, EQUIPMENT, CONTROLS, ETC. PRIOR TO COMMENCING WORK. IF SHOWN LOCATION OR SIZE DIFFER FROM PLANS, LOCATE THE CORRECT SIZE ON SITE AND ADJUST CONNECTION ACCORDINGLY. PROVIDE NEW DUCT, PIPING, EQUIPMENT, CONTROLS AND ETC. IF ONE IS NOT PRESENT.
- CONTRACTOR TO PROVIDE UL LISTED 3M FIRE STOPPING AT ALL NEW AND EXISTING PIPE AND DUCT PENETRATIONS, INCLUDING PENETRATIONS NOT SHOWN ON THE CONSTRUCTION DOCUMENTS.
- CONTRACTOR TO KEEP RECORD OF NEW SYSTEM, CONTROLS, PIPING, DUCTWORK INSTALLED AS WELL AS EXISTING TO REMAIN, AND ITEMS DISCOVERED OR ENCOUNTERED ON SITE THAT WERE NOT SHOWN ON THE PLANS. THESE INCLUDE SYSTEMS, DUCTWORK, PIPE, ETC THAT DO NOT AFFECT OR ARE NOT PART OF THE PROJECT SCOPE, BUT ARE WITHIN THE BOUNDARIES OF THE PROJECT SCOPE. CONTRACTOR IS RESPONSIBLE FOR PROVIDING AS-BUILT DRAWINGS THAT ACCURATELY REFLECT THE CONDITIONS WITHIN THE BOUNDARY OF THE PROJECT SCOPE AT THE END OF THE PROJECT.
- PIPING AND DUCTWORK LOCATIONS SHOWN ON THE PLAN ARE APPROXIMATE. CONTRACTOR TO VERIFY EXACT LOCATION PRIOR TO COMMENCING WORK.
- SEE VAV BOX AND HEATING COIL VALVES SCHEDULES ON M6.3 FOR 2-WAY OR 3-WAY CONTROL VALVE.
- SEE M6.1-M6.7 FOR MECHANICAL LEGEND, SCHEDULES AND DETAILS.
- PROVIDE ACCESS PANEL IF NECESSARY IN HARD LID CEILING OR WALL FOR ACCESS TO VAV UNITS OR HVAC EQUIPMENT THAT REQUIRES MAINTENANCE.
- PROVIDE VANES FOR ALL RECTANGULAR ELBOWS.
- PROVIDE MANUAL VOLUME DAMPERS IN ALL DUCT BRANCHES TO DIFFUSERS. LOCATE AS CLOSE TO MAIN TRUNK AS POSSIBLE IN ACCESSIBLE CEILING OR PROVIDE W/ REMOTE ACTUATOR PER SPEC.
- NEW AND MODIFIED HVAC UNITS: REBALANCE ALL EXISTING DIFFUSERS AND GRILLES SERVED BY THE SYSTEM TO AIR FLOW LISTED ON THE DRAWINGS.
- NOTE THAT FAN PERFORMANCE POINT IS DIFFERENT. PROVIDE SHEAVES SELECTED FOR CORRECT PERFORMANCE. REPLACE (E) FLEX CONNECTION BETWEEN UNIT AND RETURN, RELIEF & OSA DUCTWORK WITH NEW. REPLACE RETURN MOTOR, SEE DRAWING FOR SIZE. CONFIRM VOLTAGE ON SITE. MODIFY UNIT MOTOR MOUNT AS REQUIRED FOR NEW MOTOR. RE-BALANCE UNITS AND OUTLETS TO LISTED AIRFLOWS. REPLACE STARTER W/ VFD. COORDINATE W/ ELECTRICAL. COORDINATE W/ ELECTRICAL/CONTROLS FOR INSTALL. PROVIDE NEW EQUIPMENT TAG TO MATCH NEW DESIGNATION. PROVIDE NEW INTAKE, RELIEF AND MIXING DAMPERS. FOR UNIT REFURBISH, SEE SPECIFICATIONS FOR ADDITIONAL REQUIREMENTS.
- PROVIDE NEW FILTER, HEATING COIL, DX COOLING COIL AND SUPPLY FAN IN EXISTING AHU-1, 2 & 3 AND MODIFY HEATING WATER PIPING AS REQUIRED. SEE PIPING DIAGRAMS ON M6.7 FOR HEATING WATER COIL.
- AC-1-AC-7, MAU-1, DAH-1, F-1-F-6 GAS PIPING NOTE: MODIFY AND CONNECT GAS PIPING TO NEW UNITS AS REQUIRED.

**KEYED NOTES:**

- REFURBISH UNIT. ALTER CONTROLS FROM MZU TO VAV SYSTEM. DEMO OF ALL (E) CONTROLS BY CONTROL CONTRACTOR. CLEAN CABINETS, & FAN WHEELS. REPLACE BELT, BEARINGS AND SHEAVES. REPLACE EXISTING LINING WHERE DAMAGED. COVER ALL EXISTING AND REPLACED LINING W/ PERFORATED LINER. SEE DETAIL 7 ON M6.5.



3 ENLARGED MECH. MEZZ. FLOOR PLAN  
 M1.1 SCALE: 1/4"=1'-0"



4 HVAC SECTION  
 M1.1 SCALE: 1/4"=1'-0"

SHEET IS REVISED PER ADDENDUM #2

