



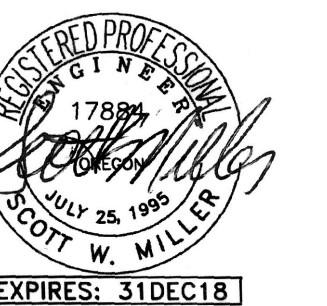
615 SE JACKSON STREET  
 PORTLAND, OR 97214  
 503.231.0518  
 WWW.PLB-ARCHITECT.COM

PAUL L BENTLEY Architect A.I.A. P.C.

ADDENDUM #2  
 2/22/2018

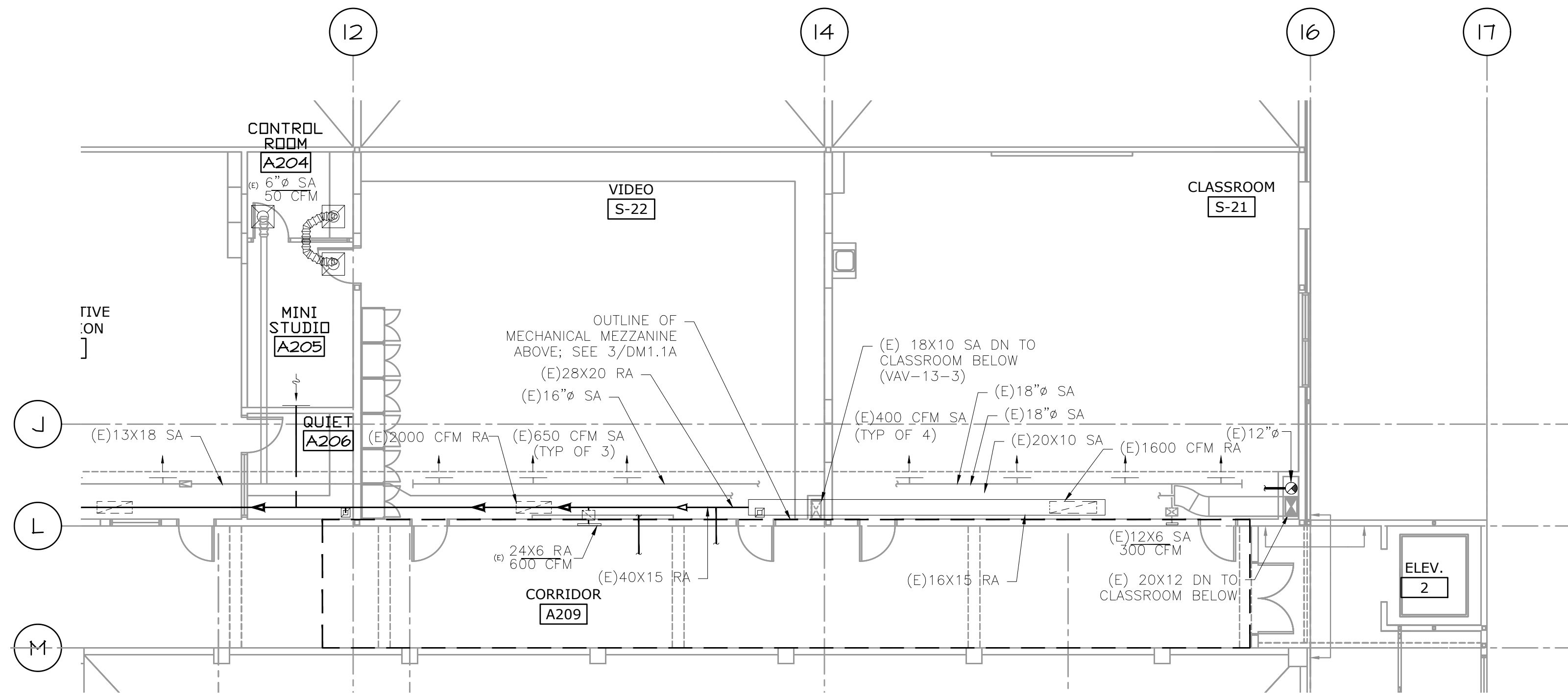
MEFA Consulting Engineers  
 2007 S.E. Ash St.  
 Portland, OR 97214  
 PHN: (503) 231-0518  
 FAX: (503) 231-0677  
 WWW.MFEA-ENG.COM  
 CONTACT: Elena von Kamerns

A NEW REMODEL PROJECT FOR:  
**SHERWOOD HIGH SCHOOL**  
 16956 SW MEINCKE ROAD  
 SHERWOOD, OR

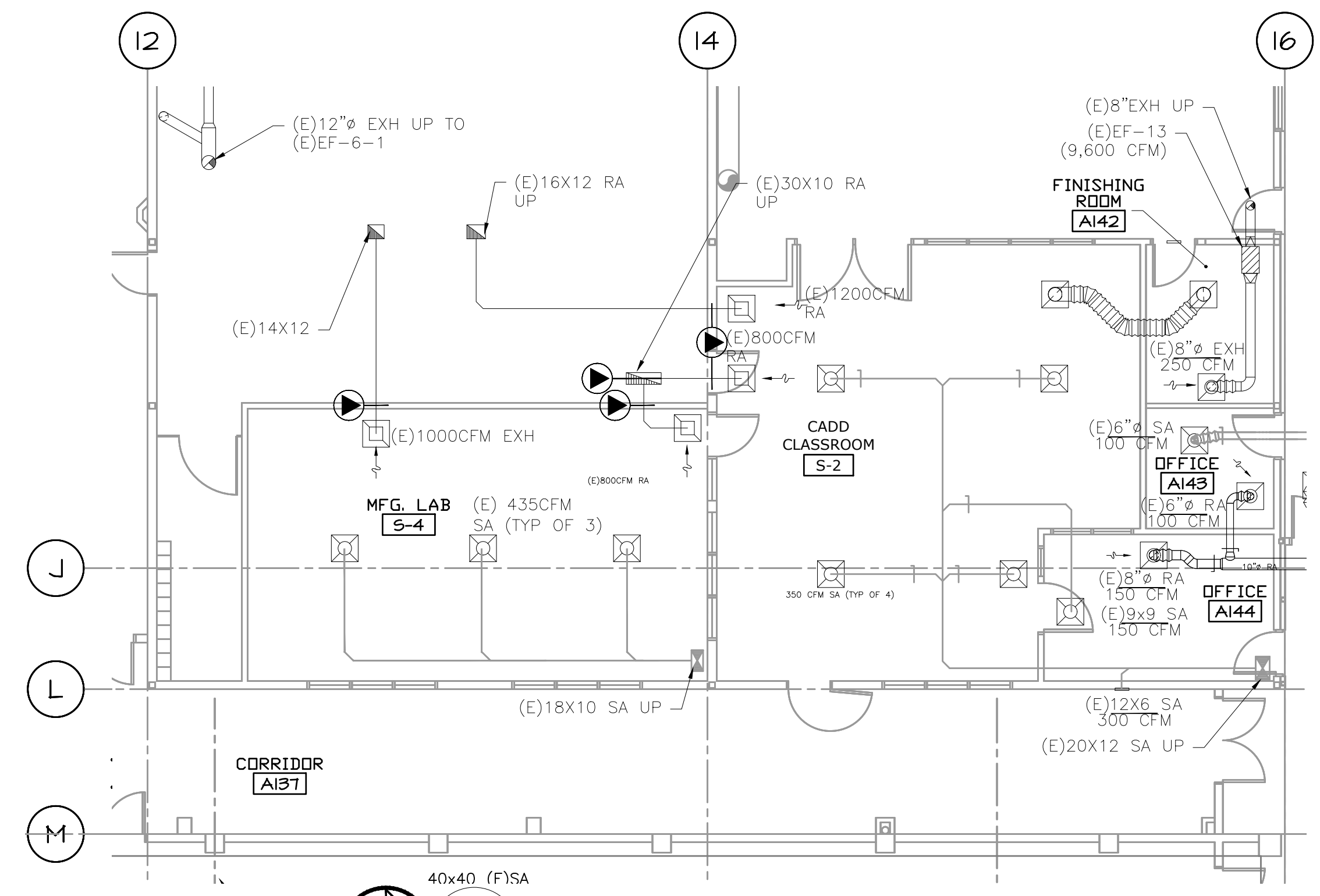


DRAWN BY: EVK  
 CHECKED BY: SWM  
 DATE: 1-30-18  
 TITLE: PARTIAL HVAC DEMO PLANS  
 SCALE: 1/8" = 1'-0"

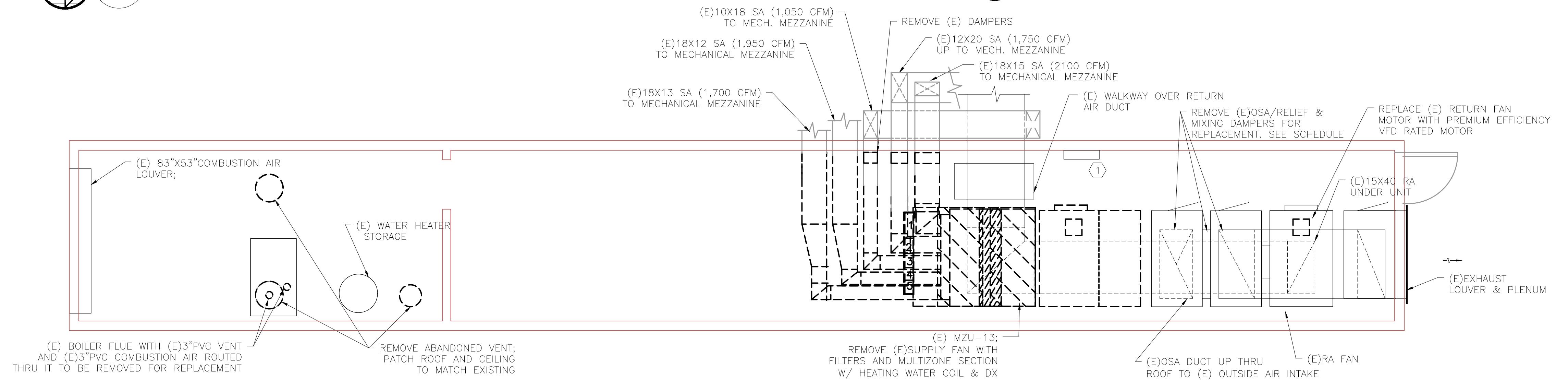
SHEET NO:  
**DM-1.1**  
 1 OF 8



2 PARTIAL HVAC DEMO PLAN - SECOND FLOOR  
 SCALE: 1/8"=1'-0"



1 PARTIAL HVAC DEMO PLAN - FIRST FLOOR  
 SCALE: 1/8"=1'-0"



3 HVAC DEMO MEZZ. PLAN  
 SCALE: 1/4"=1'-0"

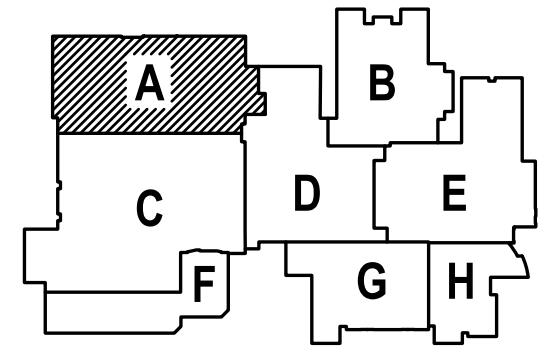
**GENERAL SHEET NOTES:**

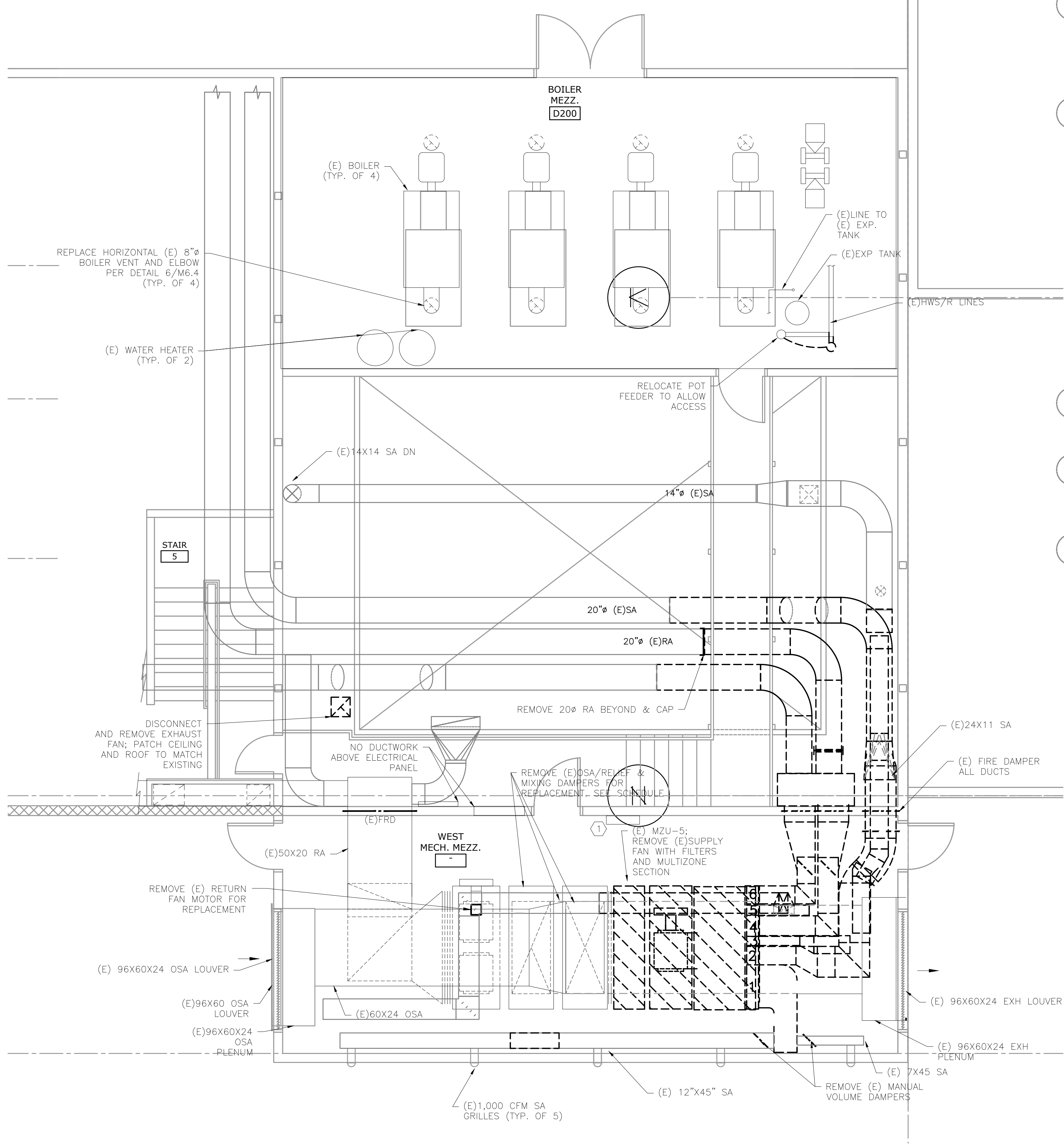
- CONTRACTOR TO VERIFY LOCATION AND SIZES OF EXISTING DUCTWORK, PIPING, EQUIPMENT, CONTROLS, ETC. PRIOR TO COMMENCING WORK. IF SHOWN LOCATION OR SIZE DIFFER FROM PLANS, LOCATE THE CORRECT SIZE ON SITE AND ADJUST CONNECTION ACCORDINGLY. PROVIDE NEW DUCT, PIPING, EQUIPMENT, CONTROLS AND ETC. IF ONE IS NOT PRESENT.
- CONTRACTOR TO KEEP RECORD OF NEW SYSTEM, CONTROLS, PIPING, DUCTWORK INSTALLED AS WELL AS EXISTING TO REMAIN, AND ITEMS DISCOVERED OR ENCOUNTERED ON SITE THAT WERE NOT SHOWN ON THE PLANS. THESE INCLUDE SYSTEMS, DUCTWORK, PIPE, ETC THAT DO NOT AFFECT OR ARE NOT PART OF THE PROJECT SCOPE, BUT ARE WITHIN THE BOUNDARIES OF THE PROJECT SCOPE. CONTRACTOR IS RESPONSIBLE FOR PROVIDING AS-BUILT DRAWINGS THAT ACCURATELY REFLECT THE CONDITIONS WITHIN THE BOUNDARY OF THE PROJECT SCOPE AT THE END OF THE PROJECT.
- PIPING AND DUCTWORK LOCATIONS SHOWN ON THE PLAN ARE APPROXIMATE. CONTRACTOR TO VERIFY EXACT LOCATION PRIOR TO COMMENCING WORK.
- SEE M6.1-M6.7 FOR MECHANICAL LEGEND, SCHEDULES AND DETAILS.

**KEYED NOTES:**

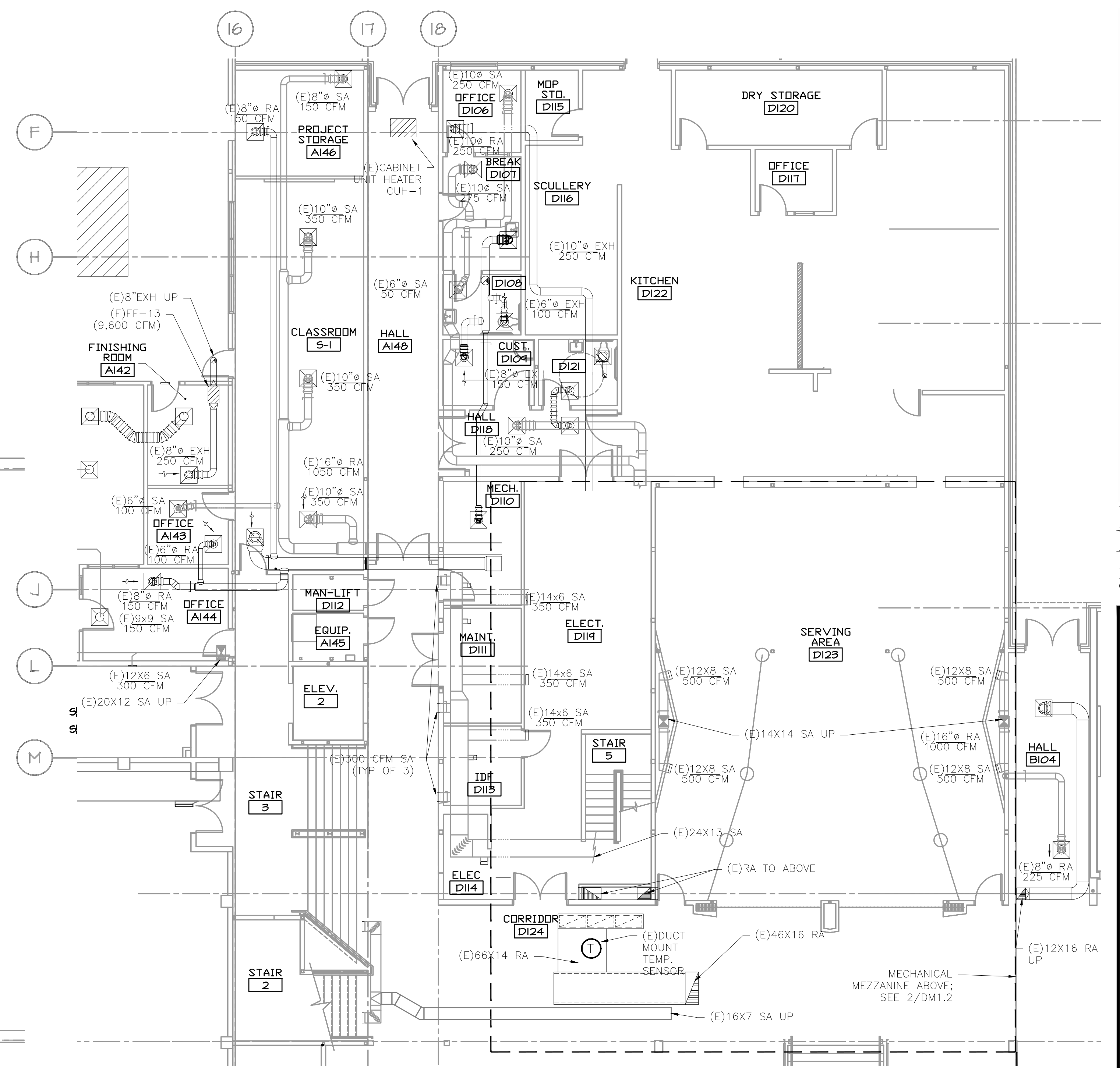
- EXISTING AUTOMATED LOGIC CONTROLS TO BE RE-USED. INSTALL IN SPECIFICATION APPROVED ENCLOSURE. ALL WIRE & DEVICES TO BE INSTALLED & LABELED PER SPECS. PROVIDE CONTROLLER EXPANSION DEVICES OR NEW CONTROLLER AS REQUIRED. SEE FOR CONTROLS.

SHEET IS REVISED PER ADDENDUM #2





**2 HVAC DEMO MEZZ PLAN**  
 DM1.2 SCALE: 1/4"=1'-0"



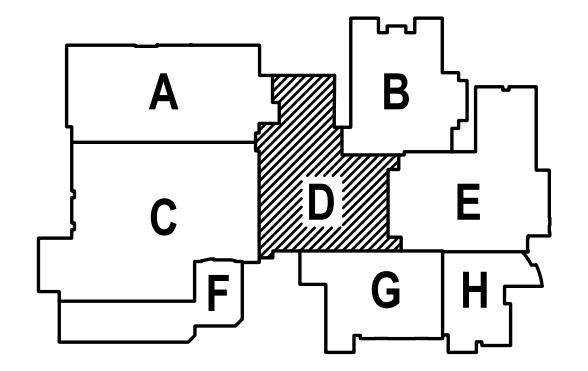
**1 PARTIAL HVAC DEMO PLAN**  
 DM1.2 SCALE: 1/8"=1'-0"

**KEYED NOTES:**  
 ① - EXISTING AUTOMATED LOGIC CONTROLS TO BE RE-USED. INSTALL IN SPECIFICATION APPROVED ENCLOSURE. ALL WIRE & DEVICES TO BE INSTALLED & LABELED PER SPECS. PROVIDE CONTROLLER EXPANSION DEVICES OR NEW CONTROLLER AS REQUIRED. SEE FOR CONTROLS.

**GENERAL SHEET NOTES:**

- CONTRACTOR TO VERIFY LOCATION AND SIZES OF EXISTING DUCTWORK, PIPING, EQUIPMENT, CONTROLS, ETC. PRIOR TO COMMENCING WORK. IF SHOWN LOCATION OR SIZE DIFFER FROM PLANS, LOCATE THE CORRECT SIZE ON SITE AND ADJUST CONNECTION ACCORDINGLY. PROVIDE NEW DUCT, PIPING, EQUIPMENT, CONTROLS AND ETC. IF ONE IS NOT PRESENT.
- CONTRACTOR TO KEEP RECORD OF NEW SYSTEM, CONTROLS, PIPING, DUCTWORK, INSTALLED AS WELL AS EXISTING TO REMAIN, AND ITEMS DISCOVERED OR ENCOUNTERED ON SITE THAT WERE NOT SHOWN ON THE PLANS. THESE INCLUDE SYSTEMS, DUCTWORK, PIPE, ETC THAT DO NOT AFFECT OR ARE NOT PART OF THE PROJECT SCOPE, BUT ARE WITHIN THE BOUNDARIES OF THE PROJECT SCOPE. CONTRACTOR IS RESPONSIBLE FOR PROVIDING AS-BUILT DRAWINGS THAT ACCURATELY REFLECT THE CONDITIONS WITHIN THE BOUNDARY OF THE PROJECT SCOPE AT THE END OF THE PROJECT.
- PIPING AND DUCTWORK LOCATIONS SHOWN ON THE PLAN ARE APPROXIMATE. CONTRACTOR TO VERIFY EXACT LOCATION PRIOR TO COMMENCING WORK.
- SEE M6.1-M6.7 FOR MECHANICAL LEGEND, SCHEDULES AND DETAILS.

SHEET IS REVISED PER ADDENDUM #2



615 SE JACKSON STREET  
 PORTLAND, OR 97214  
 503.473.8273 OFFICE  
 503.473.7560 FAX  
 paul@paulbentleyarchitect.com

PAUL L BENTLEY Architect A.I.A. P.C.

ADDENDUM #2  
 2/22/2018

**MFA** Consulting Engineers  
 2007 S.E. Ash St.  
 Portland, OR 97214  
 PHN: (503) 234-0548  
 FAX: (503) 234-0677  
 WWW.MFA-ENG.COM  
 CONTACT: Elena von Kamens

SHERWOOD HIGH SCHOOL

A NEW REMODEL PROJECT FOR:

16956 SW MEINCKE ROAD  
 SHERWOOD, OR

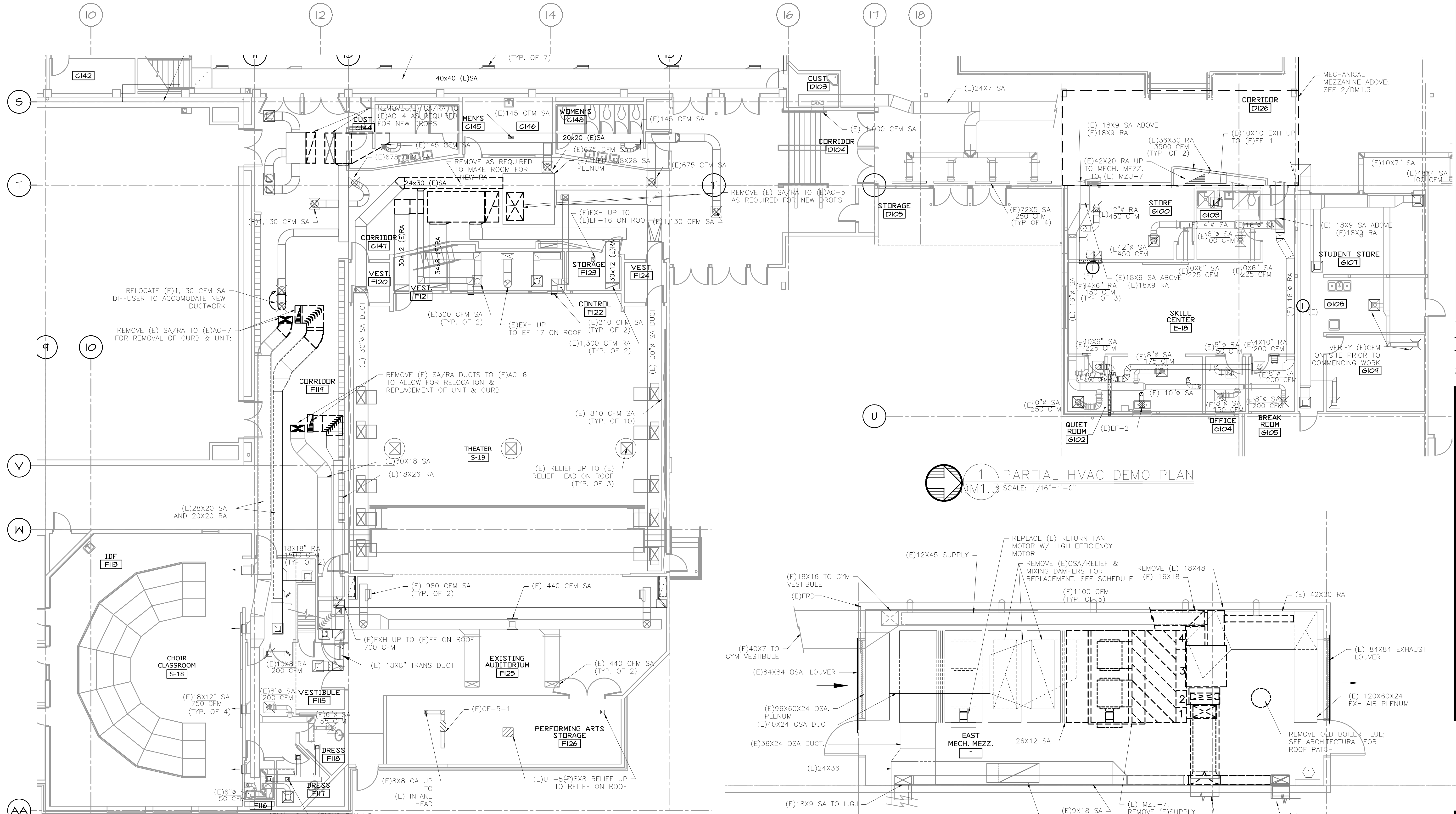
DRAWN BY:	EVK
CHECKED BY:	SWM
DATE:	1-30-18
TITLE:	PARTIAL HVAC DEMO PLANS
SCALE:	1/8" = 1'-0"
SHEET NO:	DM-1.2
	2 OF 8



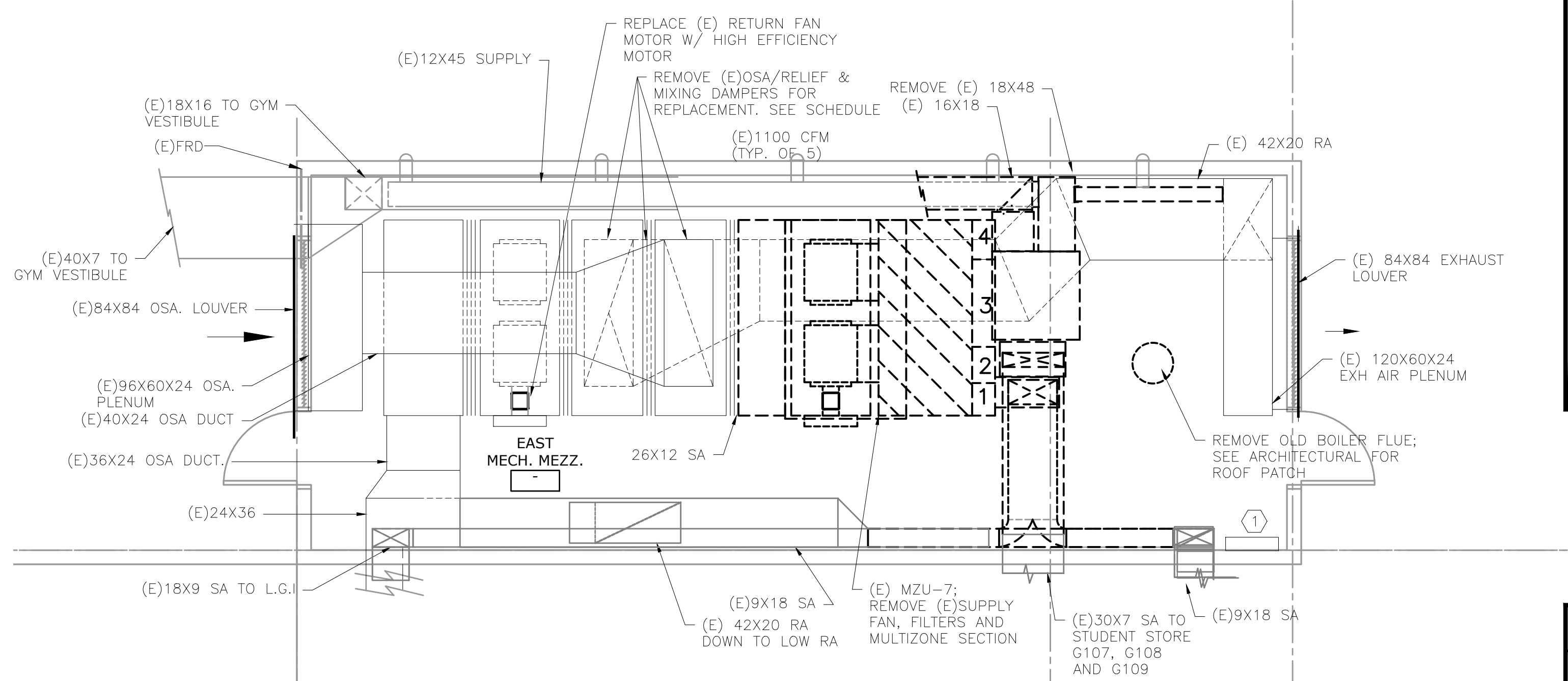


615 SE JACKSON STREET  
 PORTLAND, OR 97214  
 503.472.8273 OFFICE  
 503.472.7560 FAX  
 paul@paulbentleyarchitect.com

PAUL L BENTLEY Architect A.I.A. P.C.



1 PARTIAL HVAC DEMO PLAN  
 DM1.3 SCALE: 1/16"=1'-0"



2 HVAC DEMO MEZZ. PLAN  
 DM1.3 SCALE: 1/4"=1'-0"

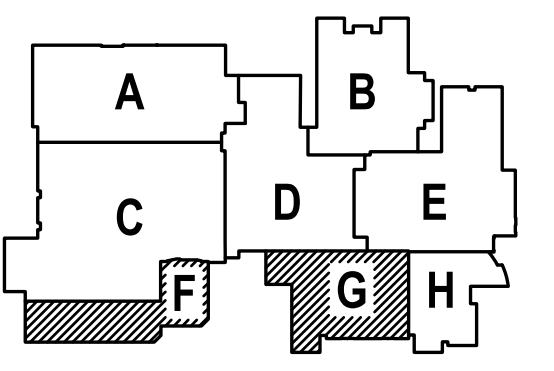
**GENERAL SHEET NOTES:**

1. CONTRACTOR TO VERIFY LOCATION AND SIZES OF EXISTING DUCTWORK, PIPING, EQUIPMENT, CONTROLS, ETC. PRIOR TO COMMENCING WORK. IF SHOWN LOCATION OR SIZE DIFFER FROM PLANS, LOCATE THE CORRECT SIZE ON SITE AND ADJUST CONNECTION ACCORDINGLY. PROVIDE NEW DUCT, PIPING, EQUIPMENT, CONTROLS AND ETC. IF ONE IS NOT PRESENT.
2. CONTRACTOR TO KEEP RECORD OF NEW SYSTEM, CONTROLS, PIPING, DUCTWORK INSTALLED AS WELL AS EXISTING TO REMAIN, AND ITEMS DISCOVERED OR ENCOUNTERED ON SITE THAT WERE NOT SHOWN ON THE PLANS. THESE INCLUDE SYSTEMS, DUCTWORK, PIPE, ETC THAT DO NOT AFFECT OR ARE NOT PART OF THE PROJECT SCOPE. CONTRACTOR IS RESPONSIBLE FOR PROVIDING AS-BUILT DRAWINGS THAT ACCURATELY REFLECT THE CONDITIONS WITHIN THE BOUNDARY OF THE PROJECT SCOPE AT THE END OF THE PROJECT.
3. PIPING AND DUCTWORK LOCATIONS SHOWN ON THE PLAN ARE APPROXIMATE. CONTRACTOR TO VERIFY EXACT LOCATION PRIOR TO COMMENCING WORK.
4. SEE M6.1-M6.7 FOR MECHANICAL LEGEND, SCHEDULES AND DETAILS.

**KEYED NOTES:**

- 1 - EXISTING AUTOMATED LOGIC CONTROLS TO BE RE-USED. INSTALL IN SPECIFICATION APPROVED ENCLOSURE. ALL WIRE & DEVICES TO BE INSTALLED & LABELED PER SPECS. PROVIDE CONTROLLER EXPANSION DEVICES OR NEW CONTROLLER AS REQUIRED. SEE FOR CONTROLS.

SHEET IS REVISED PER ADDENDUM #2



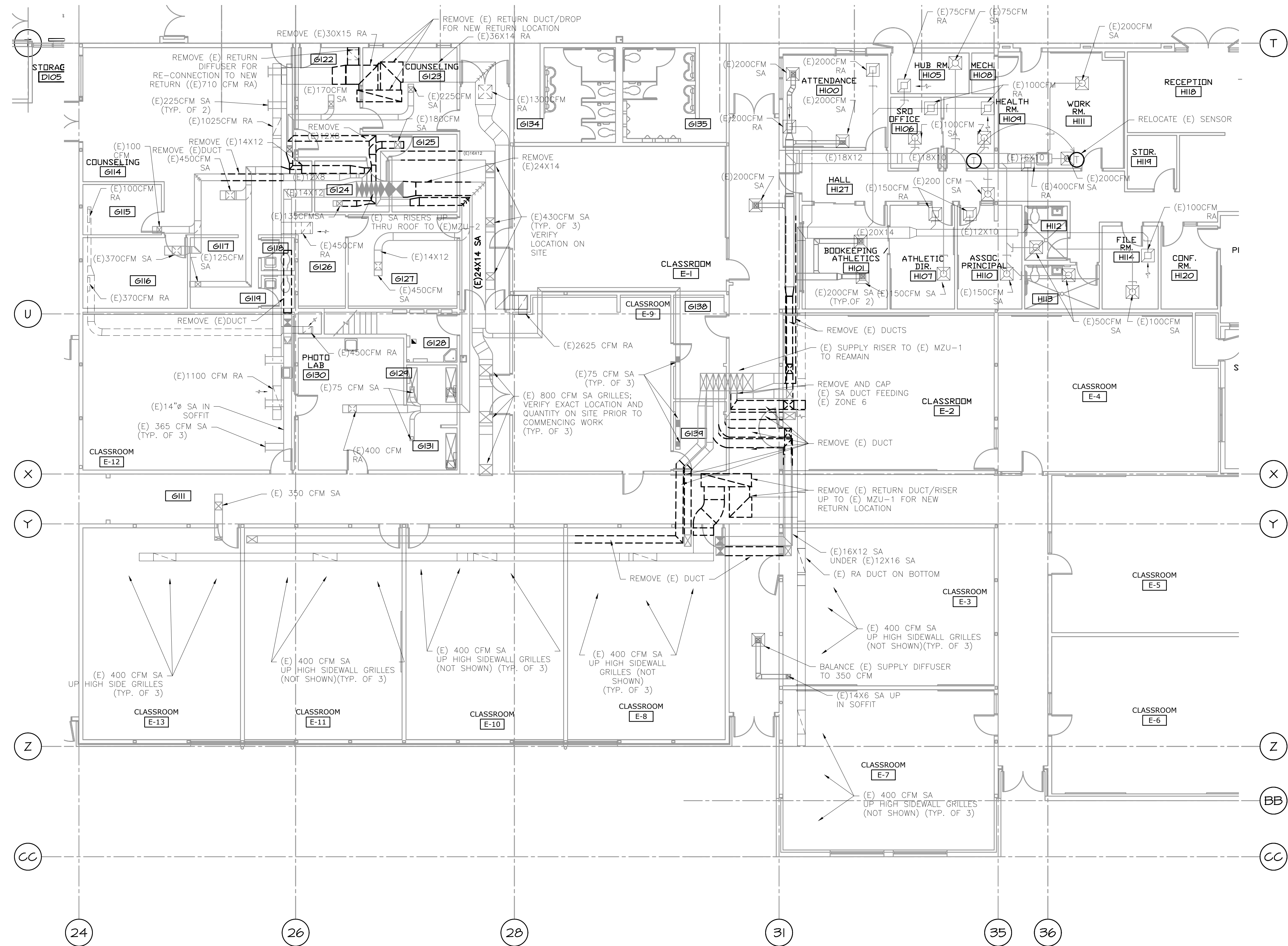
ADDENDUM #2  
 2/22/2018  
 Consulting Engineers  
 2007 S.E. Ash St.  
 Portland, OR 97214  
 PHN: (503) 234-0518  
 FAX: (503) 234-0677  
 WWW.MFA-ENG.COM  
 CONTACT: Elena von Kamens

A NEW REMODEL PROJECT FOR:  
**SHERWOOD HIGH SCHOOL**  
 16956 SW MEINECKE ROAD  
 SHERWOOD, OR



DRAWN BY:	EVK
CHECKED BY:	SWM
DATE:	1-30-18
TITLE:	PARTIAL HVAC DEMO PLANS
SCALE:	1/8" = 1'-0"

SHEET NO:	DM-1.3
	3 OF 8

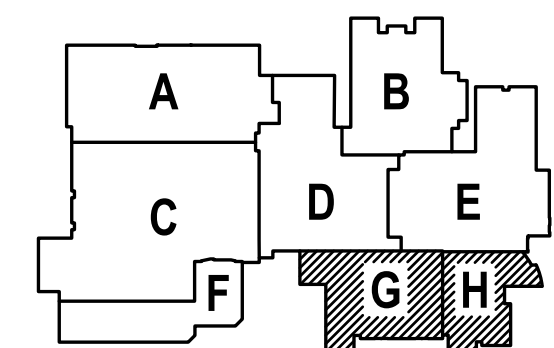


**GENERAL SHEET NOTES:**

1. CONTRACTOR TO VERIFY LOCATION AND SIZES OF EXISTING DUCTWORK, PIPING, EQUIPMENT, CONTROLS, ETC. PRIOR TO COMMENCING WORK. IF SHOWN LOCATION OR SIZE DIFFER FROM PLANS, LOCATE THE CORRECT SIZE ON SITE AND ADJUST CONNECTION ACCORDINGLY. PROVIDE NEW DUCT, PIPING, EQUIPMENT, CONTROLS AND ETC. IF ONE IS NOT PRESENT.
2. CONTRACTOR TO KEEP RECORD OF NEW SYSTEM, CONTROLS, PIPING, DUCTWORK INSTALLED AS WELL AS EXISTING TO REMAIN, AND ITEMS DISCOVERED OR ENCOUNTERED ON SITE THAT WERE NOT SHOWN ON THE PLANS. THESE INCLUDE SYSTEMS, DUCTWORK, PIPE, ETC THAT DO NOT AFFECT OR ARE NOT PART OF THE PROJECT SCOPE, BUT ARE WITHIN THE BOUNDARIES OF THE PROJECT SCOPE. CONTRACTOR IS RESPONSIBLE FOR PROVIDING AS-BUILT DRAWINGS THAT ACCURATELY REFLECT THE CONDITIONS WITHIN THE BOUNDARY OF THE PROJECT SCOPE AT THE END OF THE PROJECT.
3. PIPING AND DUCTWORK LOCATIONS SHOWN ON THE PLAN ARE APPROXIMATE. CONTRACTOR TO VERIFY EXACT LOCATION PRIOR TO COMMENCING WORK.
4. SEE M6.1-M6.7 FOR MECHANICAL LEGEND, SCHEDULES AND DETAILS.

1 PARTIAL HVAC DEMO PLAN  
 SCALE: 1/8"=1'-0"

SHEET IS REVISED PER ADDENDUM #2



ADDENDUM #2  
 2/22/2018

MFLA INC. Consulting Engineers  
 2007 S.E. Ash St.  
 Portland, OR 97214  
 PH: (503) 234-0548  
 FAX: (503) 234-0677  
 WWW.MFLA-ENG.COM  
 CONTACT: ELENA VON KAMENITS

A NEW REMODEL PROJECT FOR:

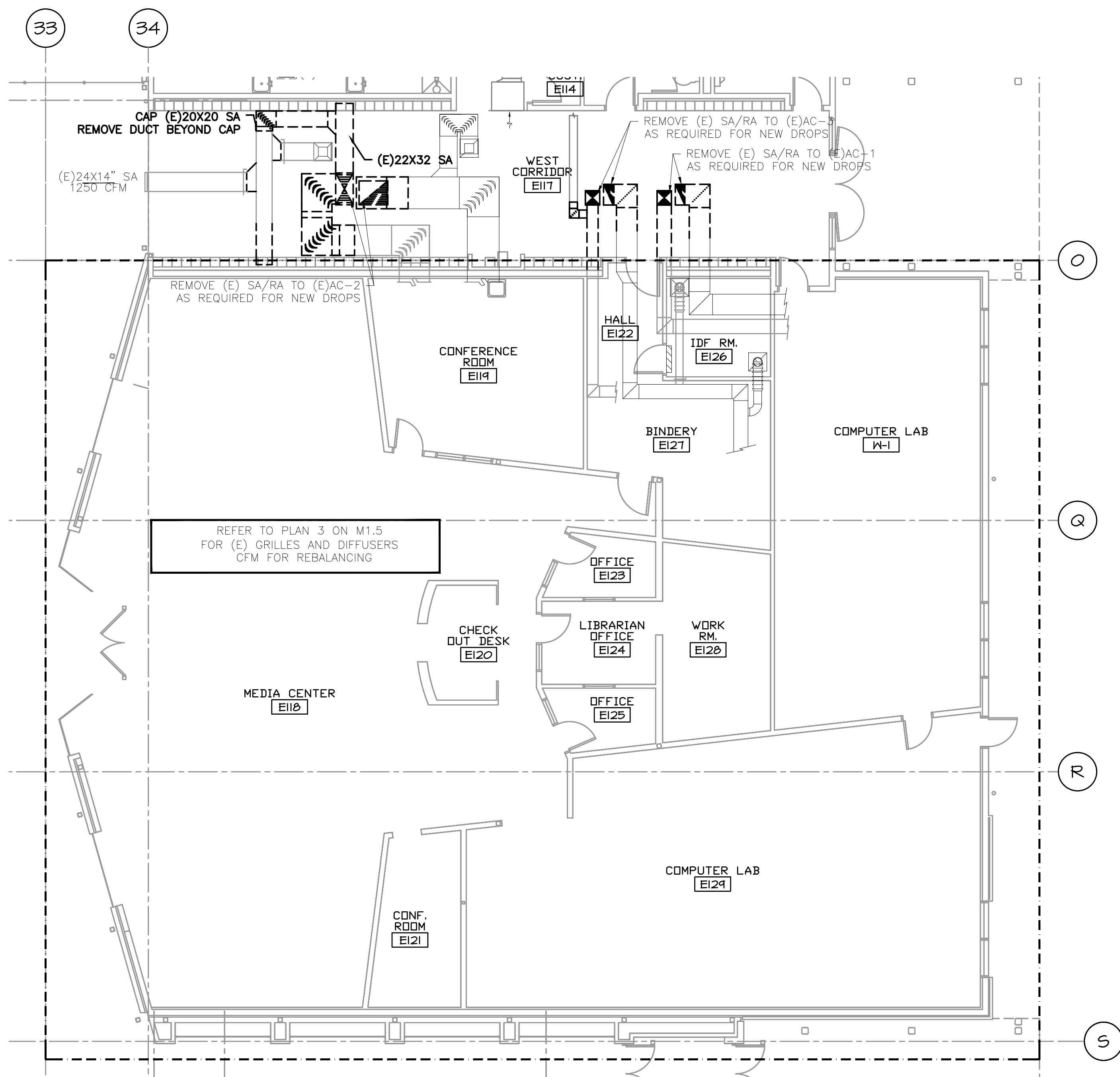
# SHERWOOD HIGH SCHOOL

16956 SW MEINCKE ROAD  
 SHERWOOD, OR

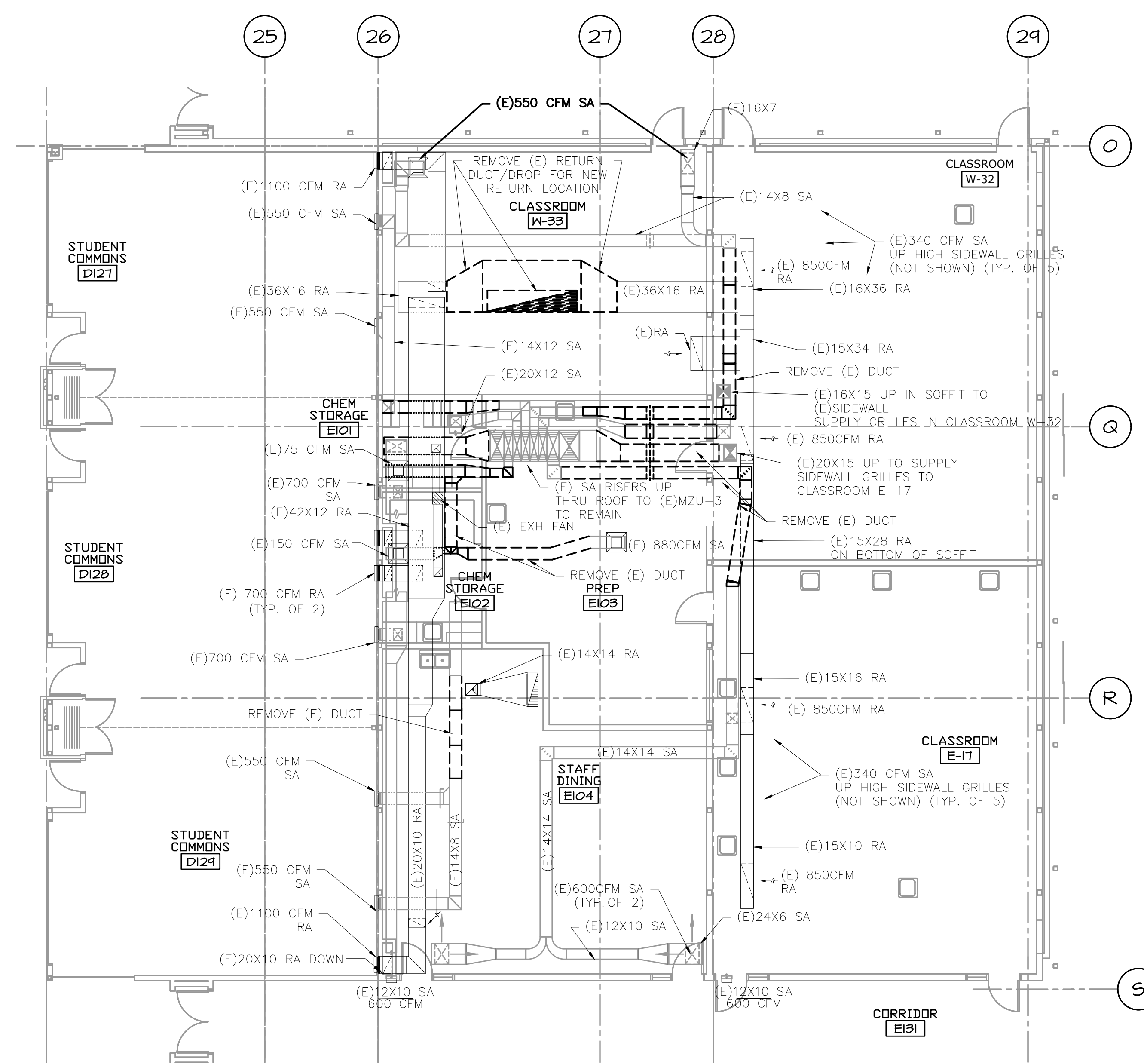


DRAWN BY:	EVK
CHECKED BY:	SWM
DATE:	1-30-18
TITLE:	PARTIAL HVAC DEMO PLAN
SCALE:	1/8" = 1'-0"

SHEET NO:	DM-1.4
	4 OF 8



2 PARTIAL HVAC DEMO PLAN  
M1.5 SCALE: 1/8"=1'-0"

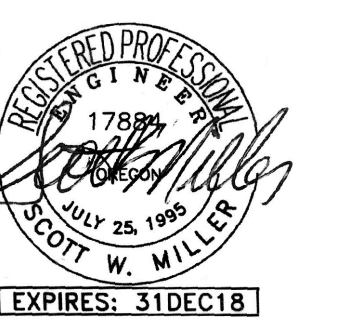
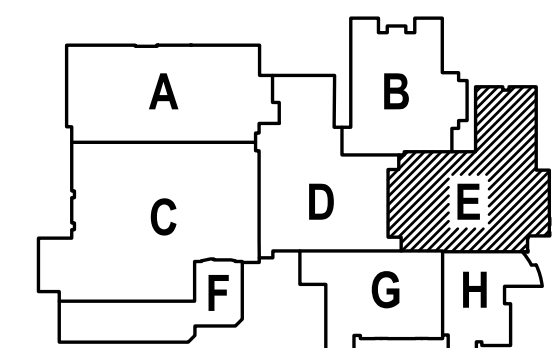


1 PARTIAL HVAC DEMO PLAN  
M1.5 SCALE: 1/8"=1'-0"

GENERAL SHEET NOTES:

1. CONTRACTOR TO VERIFY LOCATION AND SIZES OF EXISTING DUCTWORK, PIPING, EQUIPMENT, CONTROLS, ETC. PRIOR TO COMMENCING WORK. IF SHOWN LOCATION OR SIZE DIFFER FROM PLANS, LOCATE THE CORRECT SIZE ON SITE AND ADJUST CONNECTION ACCORDINGLY. PROVIDE NEW DUCT, PIPING, EQUIPMENT, CONTROLS AND ETC. IF ONE IS NOT PRESENT.
2. CONTRACTOR TO KEEP RECORD OF NEW SYSTEM, CONTROLS, PIPING, DUCTWORK INSTALLED AS WELL AS EXISTING TO REMAIN, AND ITEMS DISCOVERED OR ENCOUNTERED ON SITE THAT WERE NOT SHOWN ON THE PLANS. THESE INCLUDE SYSTEMS, DUCTWORK, PIPE, ETC THAT DO NOT AFFECT OR ARE NOT PART OF THE PROJECT SCOPE, BUT ARE WITHIN THE BOUNDARIES OF THE PROJECT SCOPE. CONTRACTOR IS RESPONSIBLE FOR PROVIDING AS-BUILT DRAWINGS THAT ACCURATELY REFLECT THE CONDITIONS WITHIN THE BOUNDARY OF THE PROJECT SCOPE AT THE END OF THE PROJECT.
3. PIPING AND DUCTWORK LOCATIONS SHOWN ON THE PLAN ARE APPROXIMATE. CONTRACTOR TO VERIFY EXACT LOCATION PRIOR TO COMMENCING WORK.
4. SEE M6.1-M6.7 FOR MECHANICAL LEGEND, SCHEDULES AND DETAILS.

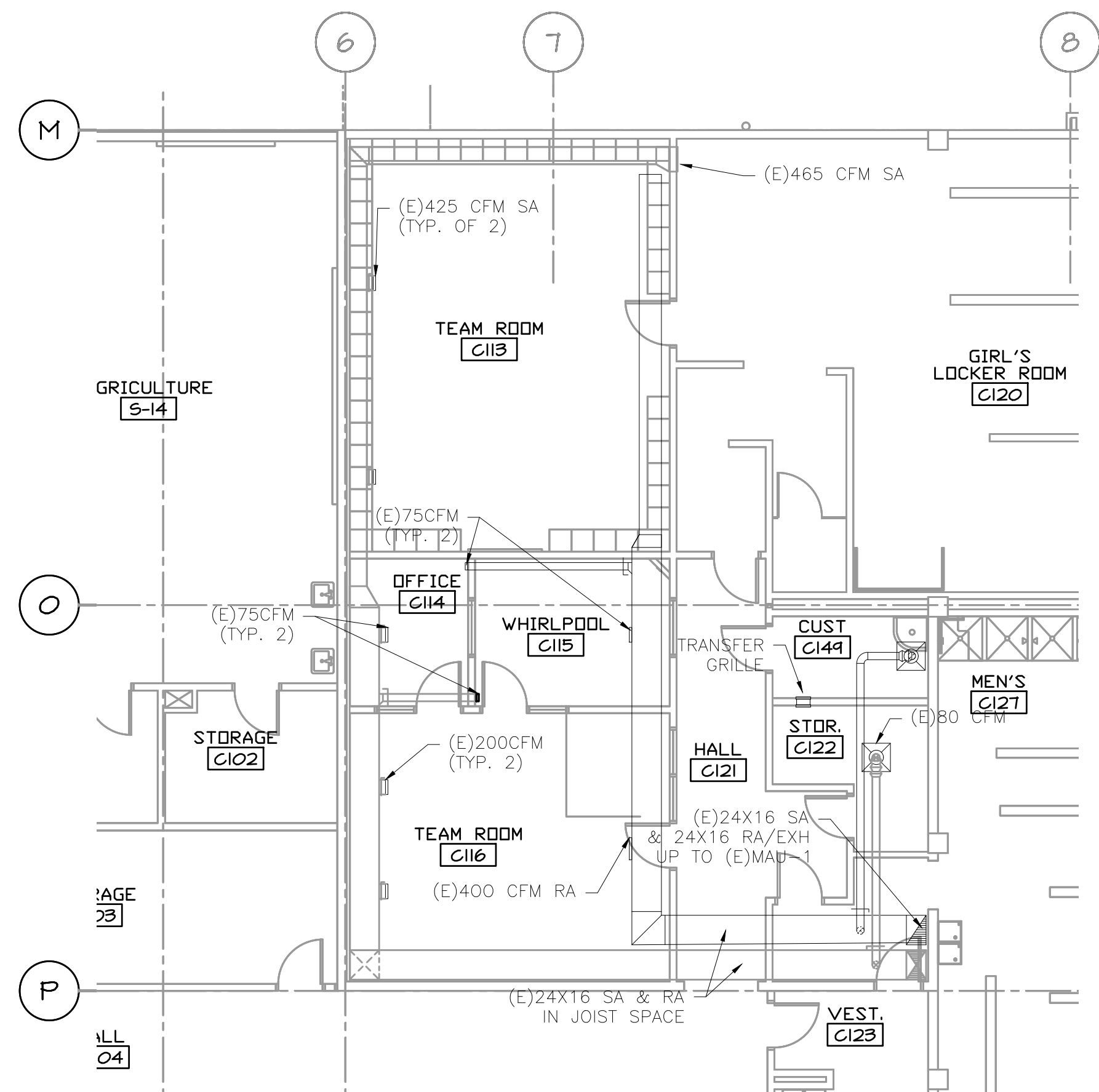
SHEET IS REVISED PER ADDENDUM #2



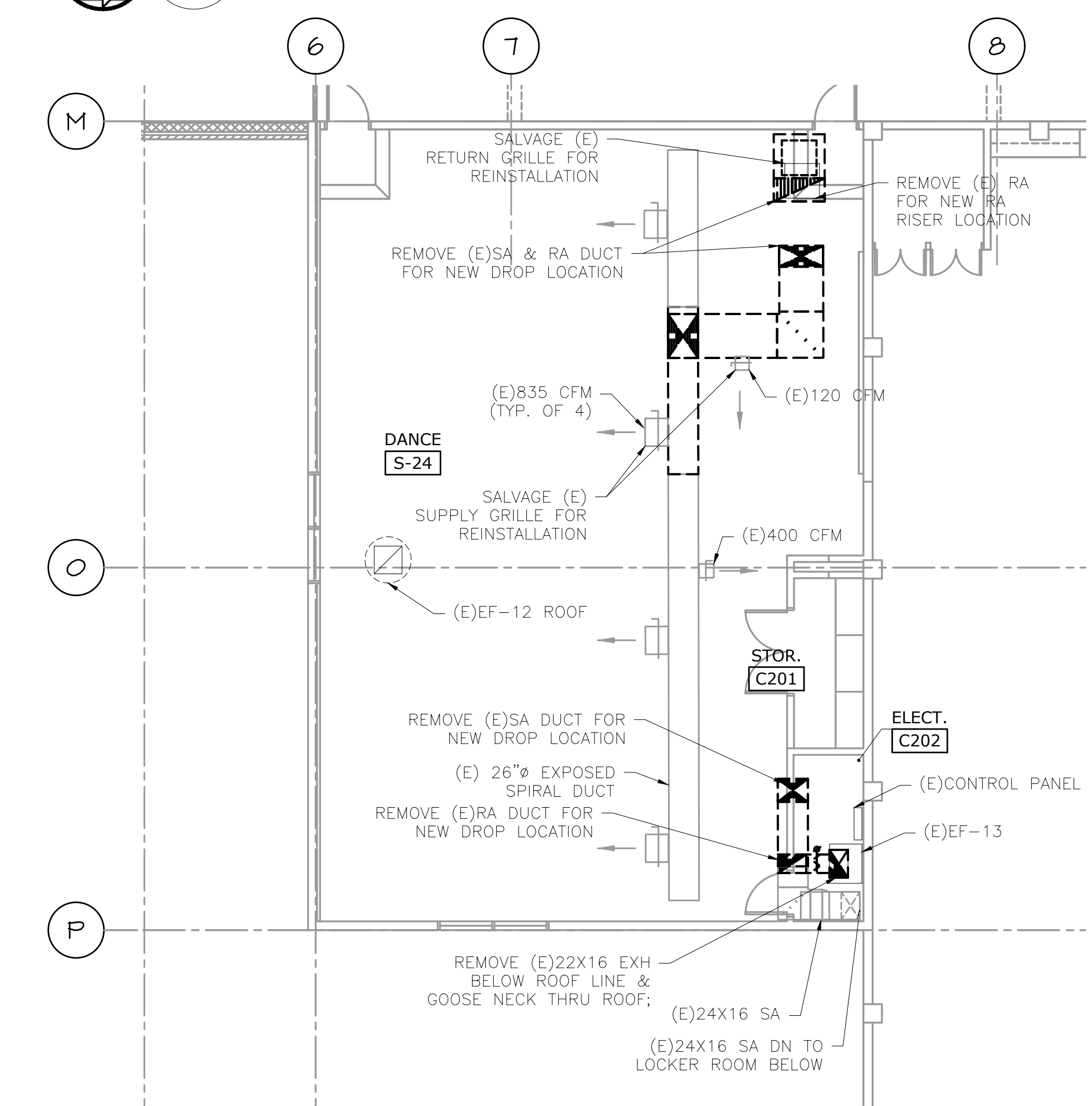
DRAWN BY:	EVK
CHECKED BY:	SWM
DATE:	1-30-18
TITLE:	PARTIAL HVAC DEMO PLANS
SCALE:	1/8" = 1'-0"

SHEET NO:	DM-1.5
	5 OF 8

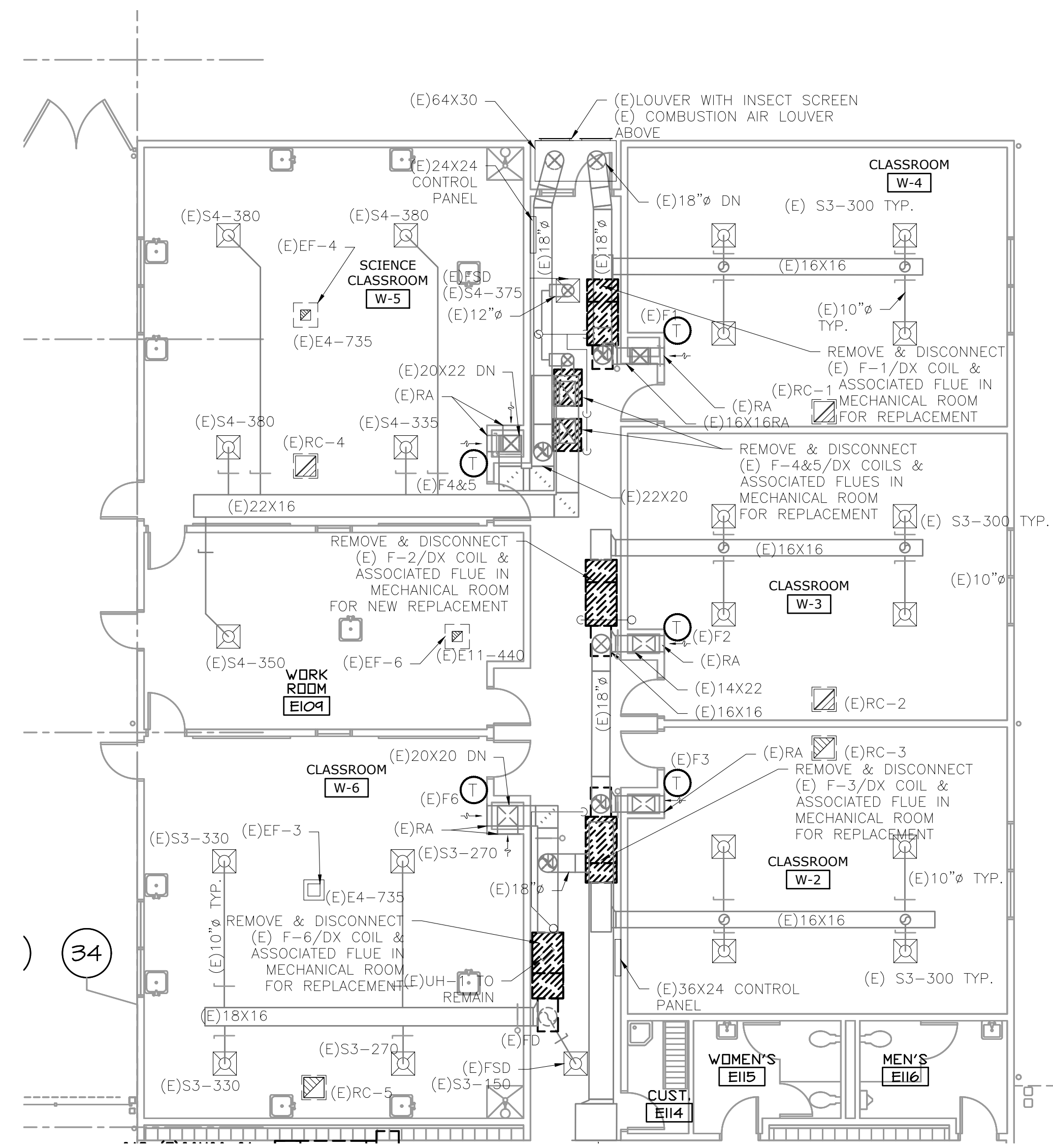




2 PARTIAL HVAC DEMO PLAN - FIRST FLOOR  
 DM-1.6 SCALE: 1/8"=1'-0"



3 PARTIAL HVAC DEMO PLAN - SECOND FLOOR  
 DM-1.6 SCALE: 1/8"=1'-0"

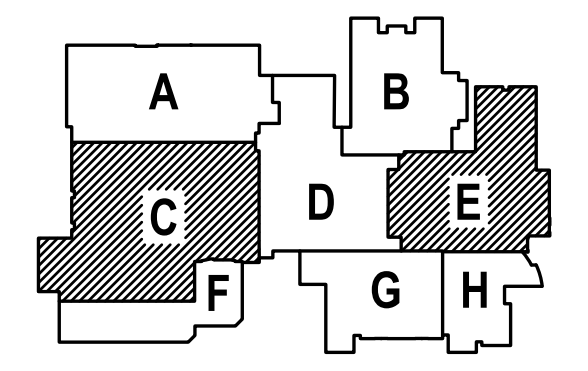


1 PARTIAL HVAC DEMO PLAN  
 DM-1.6 SCALE: 1/8"=1'-0"

**GENERAL SHEET NOTES:**

- CONTRACTOR TO VERIFY LOCATION AND SIZES OF EXISTING DUCTWORK, PIPING, EQUIPMENT, CONTROLS, ETC. PRIOR TO COMMENCING WORK. IF SHOWN LOCATION OR SIZE DIFFER FROM PLANS, LOCATE THE CORRECT SIZE ON SITE AND ADJUST CONNECTION ACCORDINGLY. PROVIDE NEW DUCT, PIPING, EQUIPMENT, CONTROLS AND ETC. IF ONE IS NOT PRESENT.
- CONTRACTOR TO KEEP RECORD OF NEW SYSTEM, CONTROLS, PIPING, DUCTWORK INSTALLED AS WELL AS EXISTING TO REMAIN, AND ITEMS DISCOVERED OR ENCOUNTERED ON SITE THAT WERE NOT SHOWN ON THE PLANS. THESE INCLUDE SYSTEMS, DUCTWORK, PIPE, ETC THAT DO NOT AFFECT OR ARE NOT PART OF THE PROJECT SCOPE, BUT ARE WITHIN THE BOUNDARIES OF THE PROJECT SCOPE. CONTRACTOR IS RESPONSIBLE FOR PROVIDING AS-BUILT DRAWINGS THAT ACCURATELY REFLECT THE CONDITIONS WITHIN THE BOUNDARY OF THE PROJECT SCOPE AT THE END OF THE PROJECT.
- PIPING AND DUCTWORK LOCATIONS SHOWN ON THE PLAN ARE APPROXIMATE. CONTRACTOR TO VERIFY EXACT LOCATION PRIOR TO COMMENCING WORK.
- SEE M6.1-M6.7 FOR MECHANICAL LEGEND, SCHEDULES AND DETAILS.

1  
 SHEET IS REVISED PER ADDENDUM #2



615 SE JACOBSON STREET  
 PORTLAND, OR 97214  
 503.473.8273 OFFICE  
 503.473.7560 FAX  
 paul@paulbentleyarchitect.com

PAUL L BENTLEY Architect A.I.A. P.C.

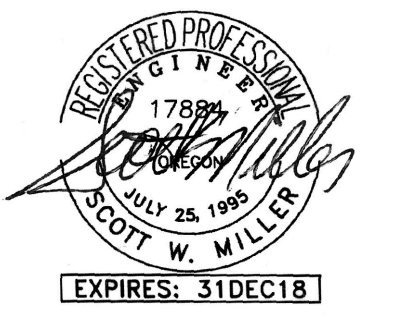
ADDENDUM #2  
 2/22/2018

MFA INC.  
 Consulting Engineers  
 2007 S.E. Ash St.  
 Portland, OR 97214  
 PHN: (503) 234-0548  
 FAX: (503) 234-0677  
 WWW.MFA-ENG.COM  
 CONTACT: Elena von Kaments

A NEW REMODEL PROJECT FOR:

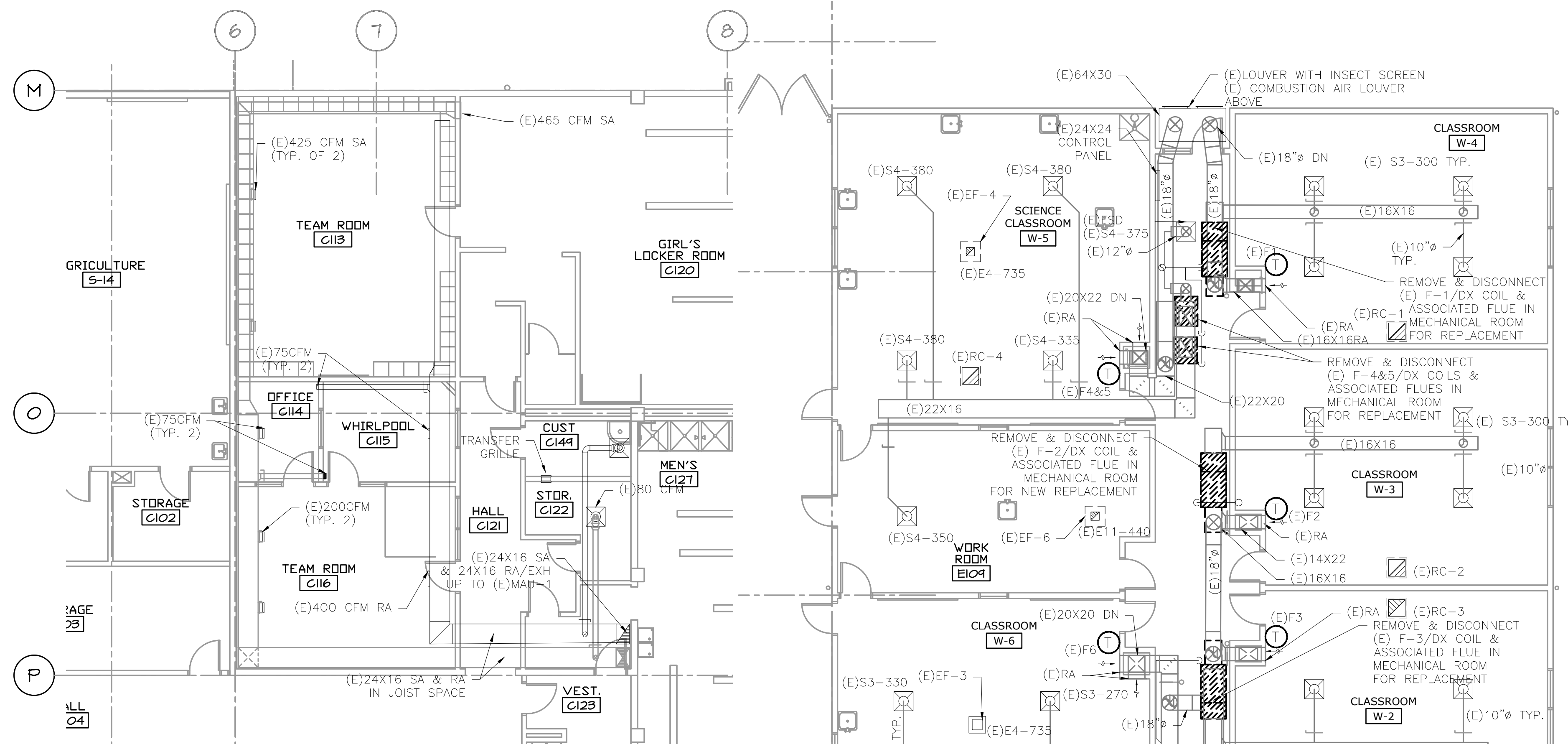
**SHERWOOD HIGH SCHOOL**

16956 SW MEINCKE ROAD SHERWOOD, OR

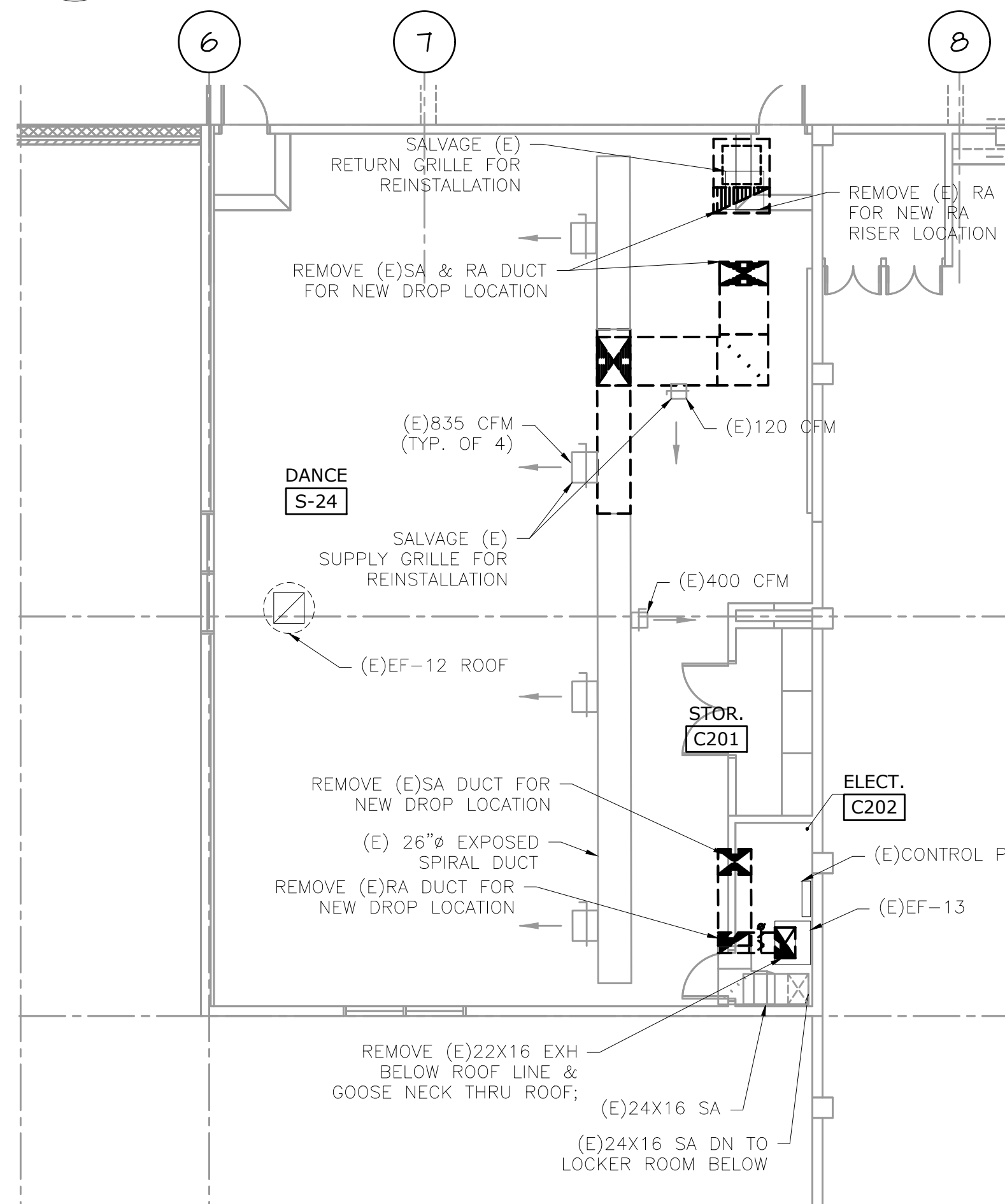


DRAWN BY:	EVK
CHECKED BY:	SWM
DATE:	1-30-18
TITLE:	PARTIAL HVAC DEMO PLANS
SCALE:	1/8" = 1'-0"

SHEET NO:	DM-1.6
	6 OF 8



2 PARTIAL HVAC DEMO PLAN - FIRST FLOOR  
 DM1.7 SCALE: 1/8"=1'-0"



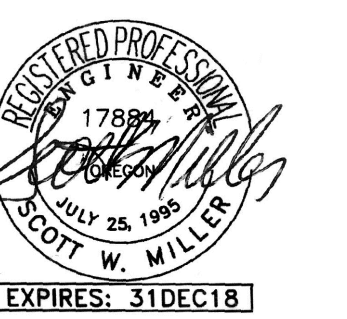
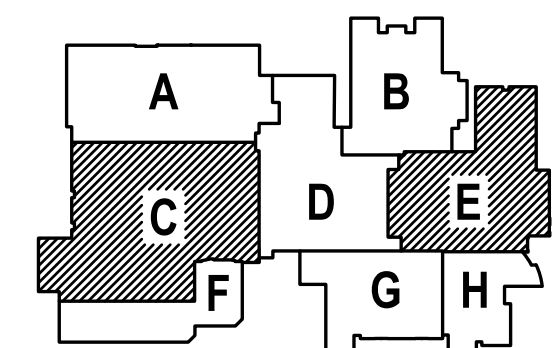
3 PARTIAL HVAC DEMO PLAN - SECOND FLOOR  
 DM1.7 SCALE: 1/8"=1'-0"

1 PARTIAL HVAC DEMO PLAN  
 DM1.7 SCALE: 1/8"=1'-0"

**GENERAL SHEET NOTES:**

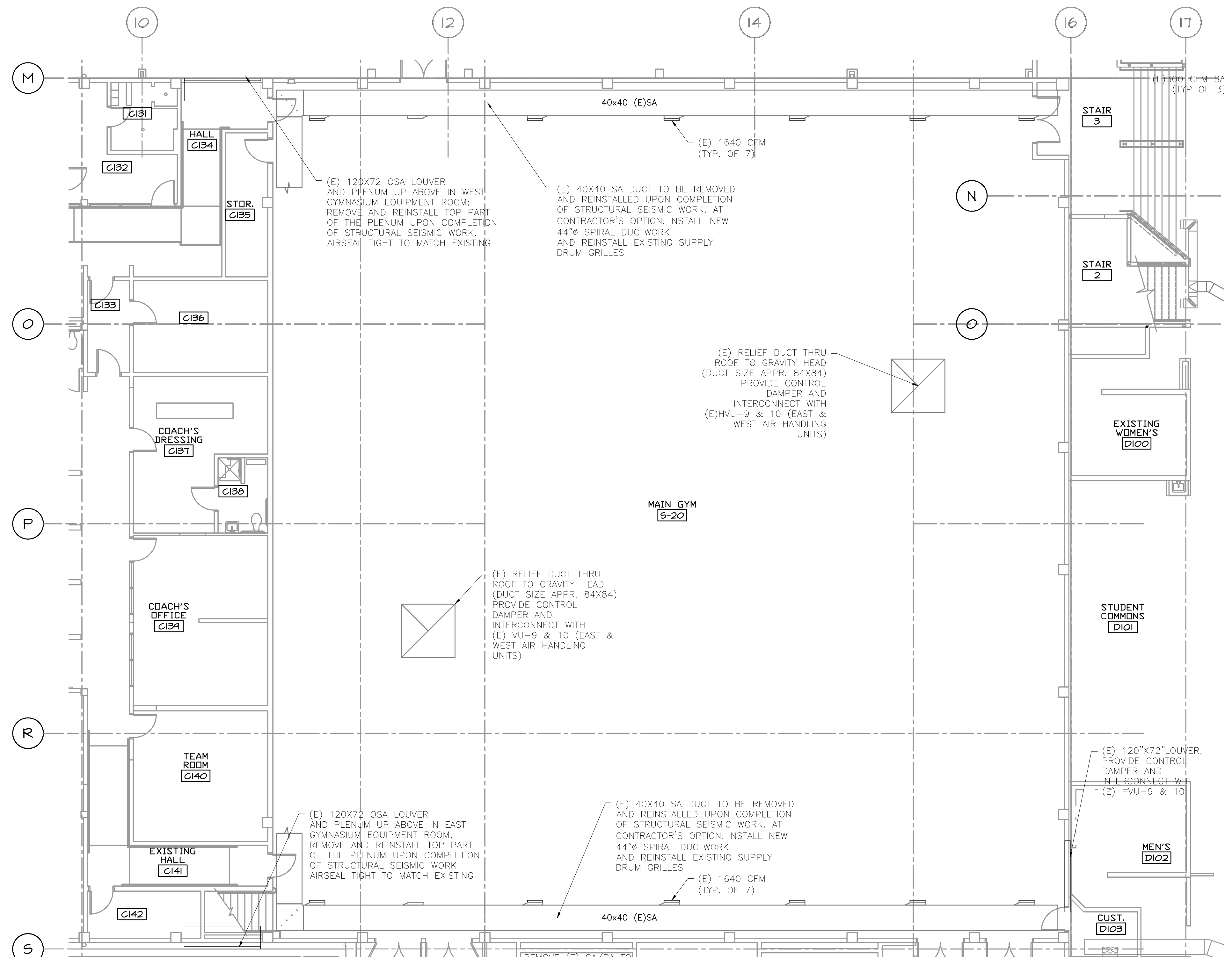
- CONTRACTOR TO VERIFY LOCATION AND SIZES OF EXISTING DUCTWORK, PIPING, EQUIPMENT, CONTROLS, ETC. PRIOR TO COMMENCING WORK. IF SHOWN LOCATION OR SIZE DIFFER FROM PLANS, LOCATE THE CORRECT SIZE ON SITE AND ADJUST CONNECTION ACCORDINGLY. PROVIDE NEW DUCT, PIPING, EQUIPMENT, CONTROLS AND ETC. IF ONE IS NOT PRESENT.
- CONTRACTOR TO KEEP RECORD OF NEW SYSTEM, CONTROLS, PIPING, DUCTWORK INSTALLED AS WELL AS EXISTING TO REMAIN, AND ITEMS DISCOVERED OR ENCOUNTERED ON SITE THAT WERE NOT SHOWN ON THE PLANS. THESE INCLUDE SYSTEMS, DUCTWORK, PIPE, ETC THAT DO NOT AFFECT OR ARE NOT PART OF THE PROJECT SCOPE. CONTRACTOR IS RESPONSIBLE FOR PROVIDING AS-BUILT DRAWINGS THAT ACCURATELY REFLECT THE CONDITIONS WITHIN THE BOUNDARY OF THE PROJECT SCOPE AT THE END OF THE PROJECT.
- PIPING AND DUCTWORK LOCATIONS SHOWN ON THE PLAN ARE APPROXIMATE. CONTRACTOR TO VERIFY EXACT LOCATION PRIOR TO COMMENCING WORK.
- SEE M6.1-M6.7 FOR MECHANICAL LEGEND, SCHEDULES AND DETAILS.

SHEET IS REVISED PER ADDENDUM #2



DRAWN BY:	EVK
CHECKED BY:	SWM
DATE:	1-30-18
TITLE:	PARTIAL HVAC DEMO PLANS
SCALE:	1/8" = 1'-0"

SHEET NO:	DM-1.7
	7 OF 7

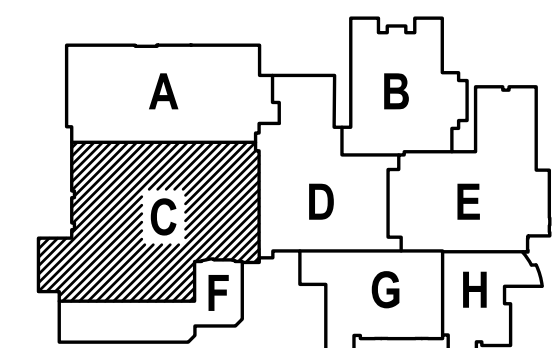


1 PARTIAL HVAC DEMO PLAN  
 DM-1.8 SCALE: 1/8"=1'-0"

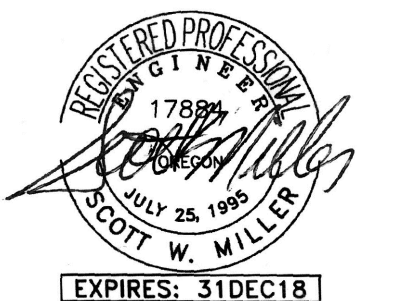
**GENERAL SHEET NOTES:**

- CONTRACTOR TO VERIFY LOCATION AND SIZES OF EXISTING DUCTWORK, PIPING, EQUIPMENT, CONTROLS, ETC. PRIOR TO COMMENCING WORK. IF SHOWN LOCATION OR SIZE DIFFER FROM PLANS, LOCATE THE CORRECT SIZE ON SITE AND ADJUST CONNECTION ACCORDINGLY. PROVIDE NEW DUCT, PIPING, EQUIPMENT, CONTROLS AND ETC. IF ONE IS NOT PRESENT.
- CONTRACTOR TO KEEP RECORD OF NEW SYSTEM, CONTROLS, PIPING, DUCTWORK INSTALLED AS WELL AS EXISTING TO REMAIN, AND ITEMS DISCOVERED OR ENCOUNTERED ON SITE THAT WERE NOT SHOWN ON THE PLANS. THESE INCLUDE SYSTEMS, DUCTWORK, PIPE, ETC THAT DO NOT AFFECT OR ARE NOT PART OF THE PROJECT SCOPE, BUT ARE WITHIN THE BOUNDARIES OF THE PROJECT SCOPE. CONTRACTOR IS RESPONSIBLE FOR PROVIDING AS-BUILT DRAWINGS THAT ACCURATELY REFLECT THE CONDITIONS WITHIN THE BOUNDARY OF THE PROJECT SCOPE AT THE END OF THE PROJECT.
- PIPING AND DUCTWORK LOCATIONS SHOWN ON THE PLAN ARE APPROXIMATE. CONTRACTOR TO VERIFY EXACT LOCATION PRIOR TO COMMENCING WORK.
- SEE M6.1-M6.7 FOR MECHANICAL LEGEND, SCHEDULES AND DETAILS.

SHEET IS REVISED PER ADDENDUM #2



A NEW REMODEL PROJECT FOR:  
**SHERWOOD HIGH SCHOOL**  
 16956 SW MEINECKE ROAD  
 SHERWOOD, OR



DRAWN BY:	EVK
CHECKED BY:	SWM
DATE:	1-30-18
TITLE:	PARTIAL HVAC DEMO PLANS
SCALE:	1/8" = 1'-0"

SHEET NO:	DM-1.8
	7 OF 7