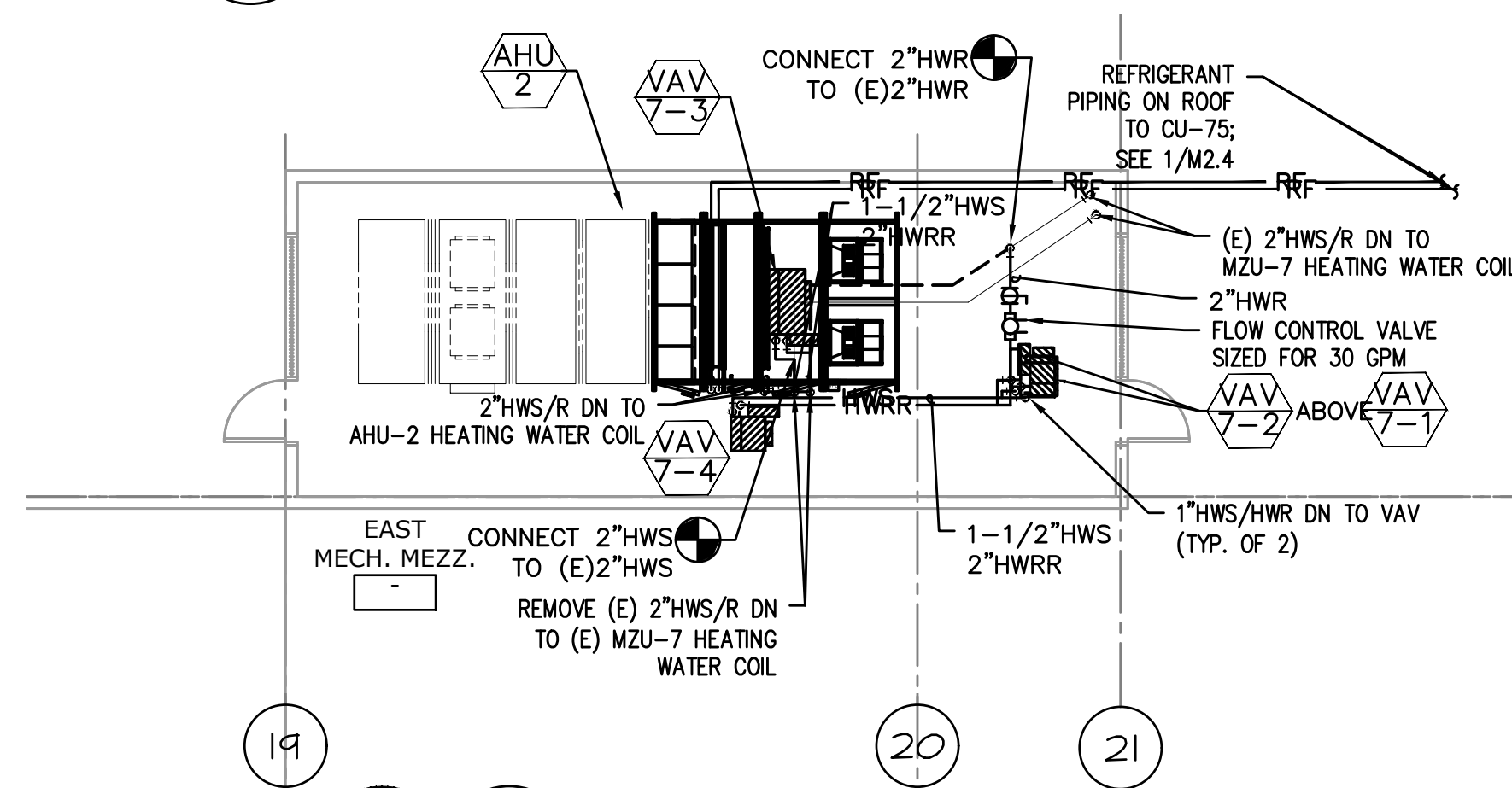
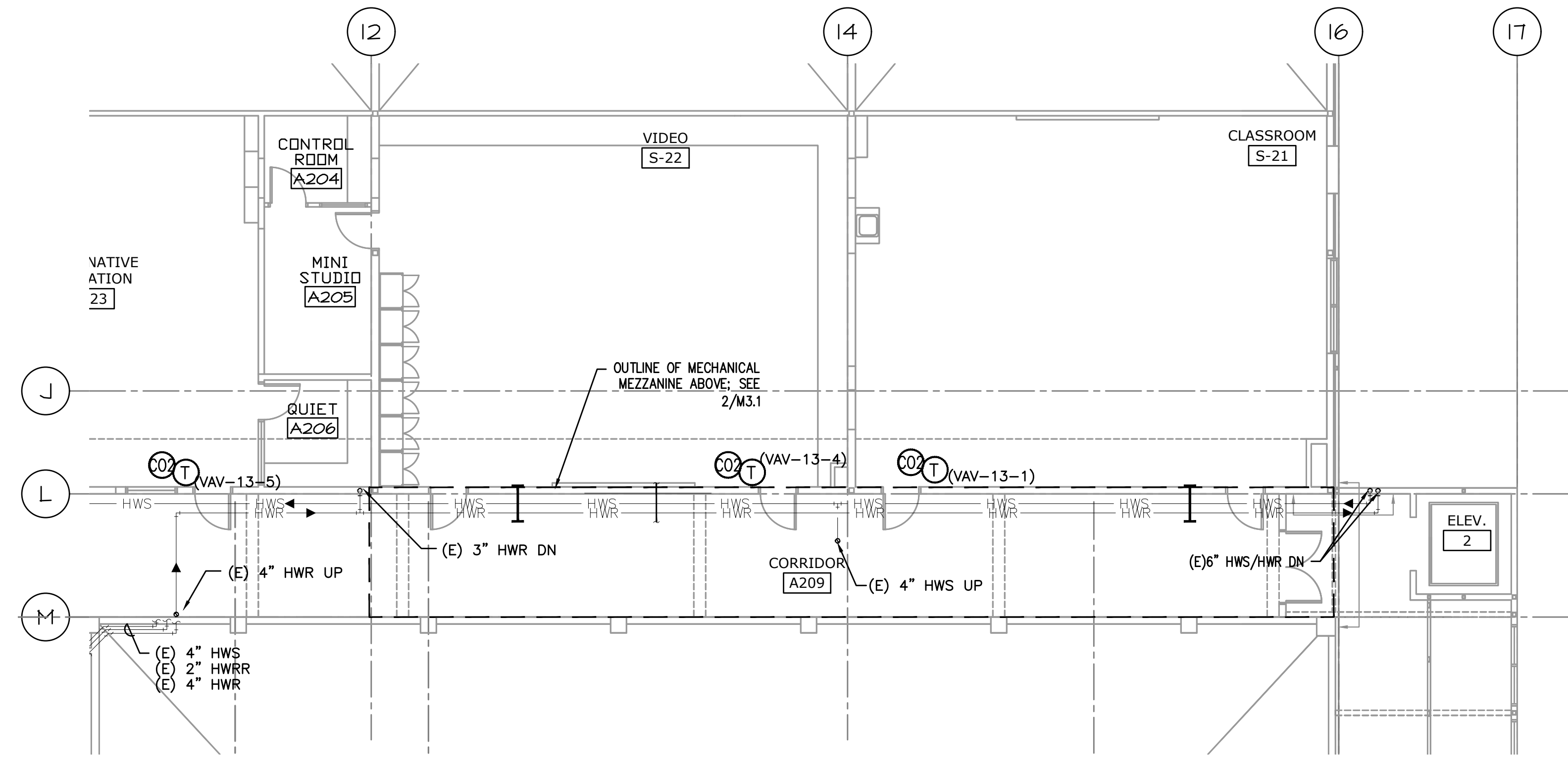


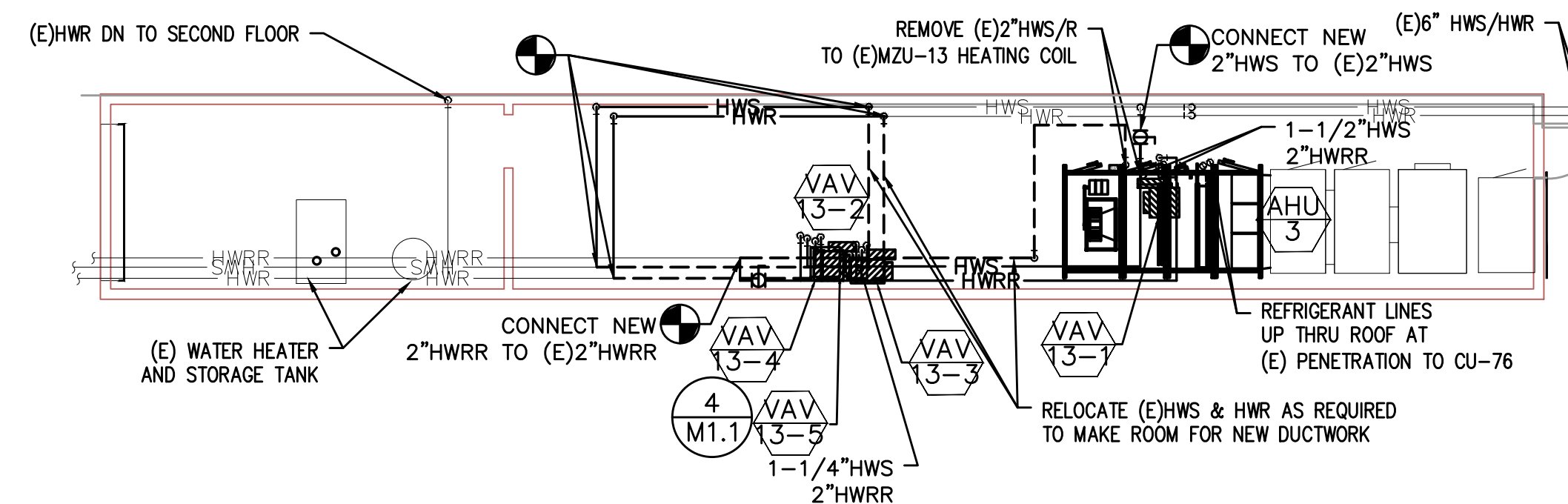
3 MEZZ MECHANICAL PIPING PLAN
SCALE: 1/8"=1'-0"



4 MEZZ MECHANICAL PIPING PLAN
SCALE: 1/8"=1'-0"



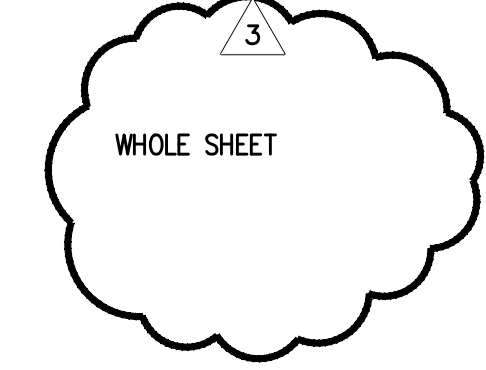
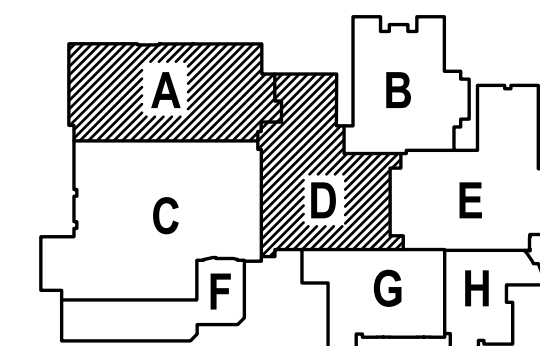
1 PARTIAL SECOND FLOOR MECHANICAL PIPING PLAN
SCALE: 1/8"=1'-0"



2 MECHANICAL MEZZ. MECHANICAL PIPING PLAN
SCALE: 1/8"=1'-0"

GENERAL SHEET NOTES:

- CONTRACTOR TO VERIFY LOCATION AND SIZES OF EXISTING DUCTWORK, PIPING, EQUIPMENT, CONTROLS, ETC. PRIOR TO COMMENCING WORK. IF SHOWN LOCATION OR SIZE DIFFER FROM PLANS, LOCATE THE CORRECT SIZE ON SITE AND ADJUST CONNECTION ACCORDINGLY. PROVIDE NEW DUCT, PIPING, EQUIPMENT, CONTROLS AND ETC. IF ONE IS NOT PRESENT.
- CONTRACTOR TO PROVIDE UL LISTED 3M FIRE STOPPING AT ALL NEW AND EXISTING PIPE AND DUCT PENETRATIONS, INCLUDING PENETRATIONS NOT SHOWN ON THE CONSTRUCTION DOCUMENTS.
- CONTRACTOR TO KEEP RECORD OF NEW SYSTEM, CONTROLS, PIPING, DUCTWORK INSTALLED AS WELL AS EXISTING TO REMAIN, AND ITEMS DISCOVERED OR ENCOUNTERED ON SITE THAT WERE NOT SHOWN ON THE PLANS. THESE INCLUDE SYSTEMS, DUCTWORK, PIPE, ETC THAT DO NOT AFFECT OR ARE NOT PART OF THE PROJECT SCOPE, BUT ARE WITHIN THE BOUNDARIES OF THE PROJECT SCOPE. CONTRACTOR IS RESPONSIBLE FOR PROVIDING AS-BUILT DRAWINGS THAT ACCURATELY REFLECT THE CONDITIONS WITHIN THE BOUNDARY OF THE PROJECT SCOPE AT THE END OF THE PROJECT.
- PIPING AND DUCTWORK LOCATIONS SHOWN ON THE PLAN ARE APPROXIMATE. CONTRACTOR TO VERIFY EXACT LOCATION PRIOR TO COMMENCING WORK.
- SEE VAV BOX AND HEATING COIL VALVES SCHEDULES ON M6.3 FOR 2-WAY OR 3-WAY CONTROL VALVE.
- SEE M6.1-M6.7 FOR MECHANICAL LEGEND, SCHEDULES AND DETAILS.
- PROVIDE ACCESS PANEL IF NECESSARY IN HARD LID CEILING OR WALL FOR ACCESS TO VAV UNITS OR HVAC EQUIPMENT THAT REQUIRES MAINTENANCE.
- REPLACE ZONE SENSOR WITH NEW DIGITAL DEVICE. LABEL WITH ASSOCIATED EQUIPMENT INFORMATION. WHERE NLL SENSOR IS NO LONGER USED PROVIDE A STAINLESS STEEL COVER PLATE OVER HOLE & SECURE.



615 SE JACKSON STREET
PORTLAND, OR 97214
503.231.0273 OFFICE
503.231.0273 FAX
PAUL@PAULBENTLEYARCHITECT.COM

PAUL L BENTLEY Architect A.I.A. P.C.

1 - ADD #2 2/22/2018
3 - PHASE #2 6.12.18

CONSTRUCTION SET-6.10.18

M Consulting Engineers
2007 S.E. Ash St.
Portland, OR 97214
PH: (503) 231-0518
FAX: (503) 231-0677
WWW.MPEA-ENG.COM
CONTACT: Elena von Kamerns

A NEW REMODEL PROJECT FOR:

SHERWOOD HIGH SCHOOL

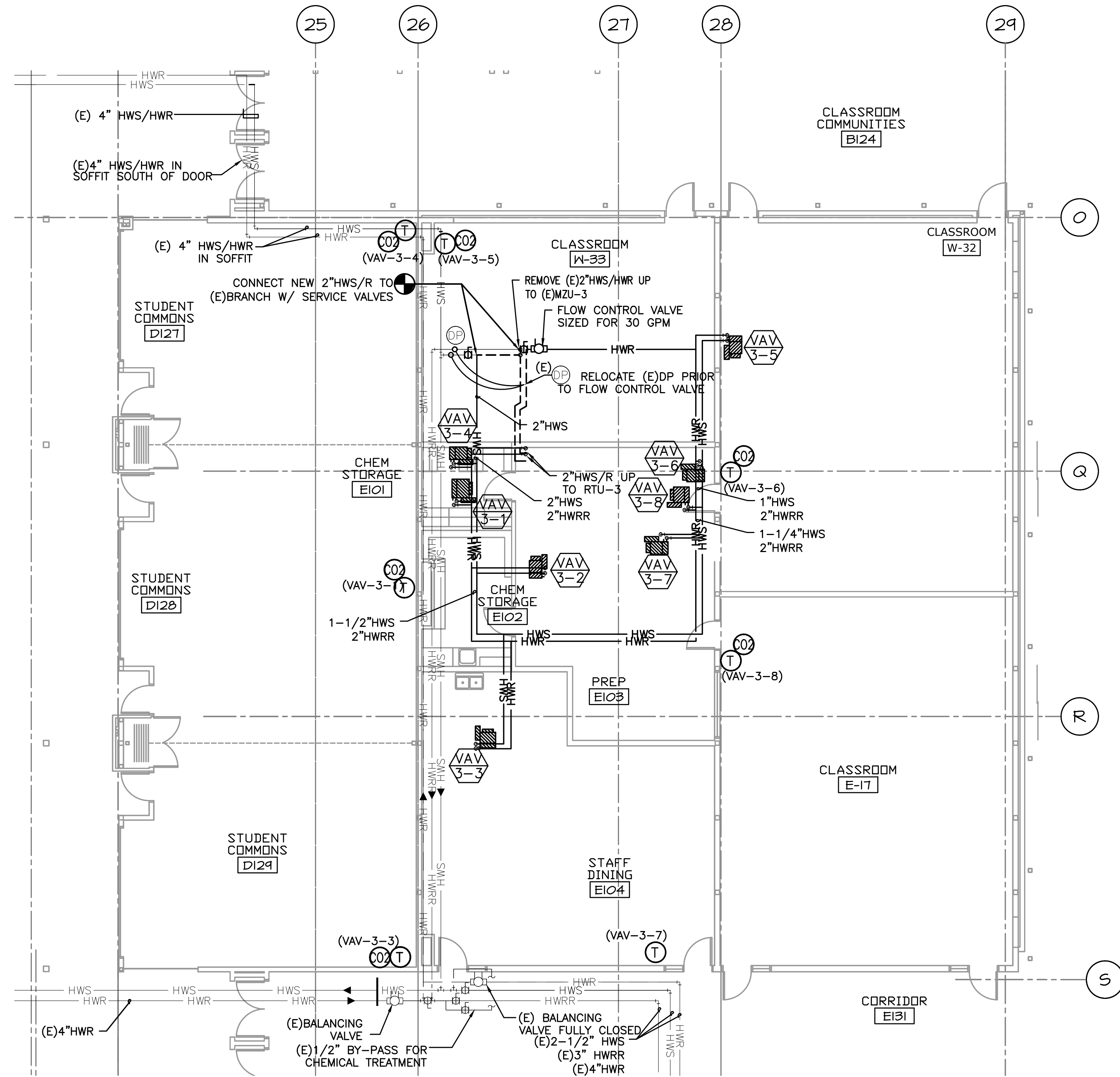
16956 SW MEINCKE ROAD SHERWOOD, OR

REGISTERED PROFESSIONAL ENGINEER
1788
JULY 25 1995
SCOTT W. MILLER
EXPIRES: 31DEC18

DRAWN BY: EVK
CHECKED BY: SWM
DATE: 1-30-18
TITLE: PARTIAL FLOOR MECHANICAL PIPING PLANS
SCALE: 1/8" = 1'-0"
SHEET NO: M-3.1
1 OF 3

GENERAL SHEET NOTES:

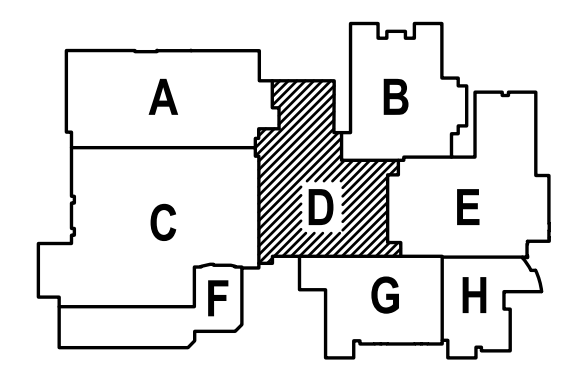
1. CONTRACTOR TO VERIFY LOCATION AND SIZES OF EXISTING DUCTWORK, PIPING, EQUIPMENT, CONTROLS, ETC. PRIOR TO COMMENCING WORK. IF SHOWN LOCATION OR SIZE DIFFER FROM PLANS, LOCATE THE CORRECT SIZE ON SITE AND ADJUST CONNECTION ACCORDINGLY. PROVIDE NEW DUCT, PIPING, EQUIPMENT, CONTROLS AND ETC. IF ONE IS NOT PRESENT.
2. CONTRACTOR TO PROVIDE UL LISTED 3M FIRE STOPPING AT ALL NEW AND EXISTING PIPE AND DUCT PENETRATIONS, INCLUDING PENETRATIONS NOT SHOWN ON THE CONSTRUCTION DOCUMENTS.
3. CONTRACTOR TO KEEP RECORD OF NEW SYSTEM, CONTROLS, PIPING, DUCTWORK INSTALLED AS WELL AS EXISTING TO REMAIN, AND ITEMS DISCOVERED OR ENCOUNTERED ON SITE THAT WERE NOT SHOWN ON THE PLANS. THESE INCLUDE SYSTEMS, DUCTWORK, PIPE, ETC THAT DO NOT AFFECT OR ARE NOT PART OF THE PROJECT SCOPE, BUT ARE WITHIN THE BOUNDARIES OF THE PROJECT SCOPE. CONTRACTOR IS RESPONSIBLE FOR PROVIDING AS-BUILT DRAWINGS THAT ACCURATELY REFLECT THE CONDITIONS WITHIN THE BOUNDARY OF THE PROJECT SCOPE AT THE END OF THE PROJECT.
4. PIPING AND DUCTWORK LOCATIONS SHOWN ON THE PLAN ARE APPROXIMATE. CONTRACTOR TO VERIFY EXACT LOCATION PRIOR TO COMMENCING WORK.
5. SEE VAV BOX AND HEATING COIL VALVES SCHEDULES ON M6.3 FOR 2-WAY OR 3-WAY CONTROL VALVE.
6. SEE M6.1-M6.7 FOR MECHANICAL LEGEND, SCHEDULES AND DETAILS.
7. PROVIDE ACCESS PANEL IF NECESSARY IN HARD LID CEILING OR WALL FOR ACCESS TO VAV UNITS OR HVAC EQUIPMENT THAT REQUIRES MAINTENANCE.
8. REPLACE ZONE SENSOR WITH NEW DIGITAL DEVICE. LABEL WITH ASSOCIATED EQUIPMENT INFORMATION. WHERE NLL SENSOR IS NO LONGER USED PROVIDE A STAINLESS STEEL COVER PLATE OVER HOLE & SECURE.



1 PARTIAL FIRST FLOOR MECHANICAL PIPING PLAN
M3.2 SCALE: 1/8"=1'-0"

3
WHOLE SHEET

1
SHEET IS REVISED PER ADDENDUM #2.



615 SE JACKSON STREET
PORTLAND, OR 97214
503.223.8273 OFFICE
503.223.7560 FAX
PAUL@PAULBENTLEYARCHITECT.COM

1 - ADD #2 2/22/2018
3 - PHASE#2 6.12.18

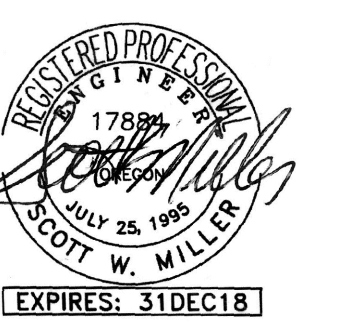
CONSTRUCTION SET-6.10.18

MFA Consulting Engineers
2007 S.E. Ash St.
Portland, OR 97214
PH: (503) 234-0548
FAX: (503) 234-0677
WWW.MFA-ENG.COM
CONTACT: Elena von Kamens

A NEW REMODEL PROJECT FOR:

SHERWOOD HIGH SCHOOL

16956 SW MEINECKE ROAD SHERWOOD, OR

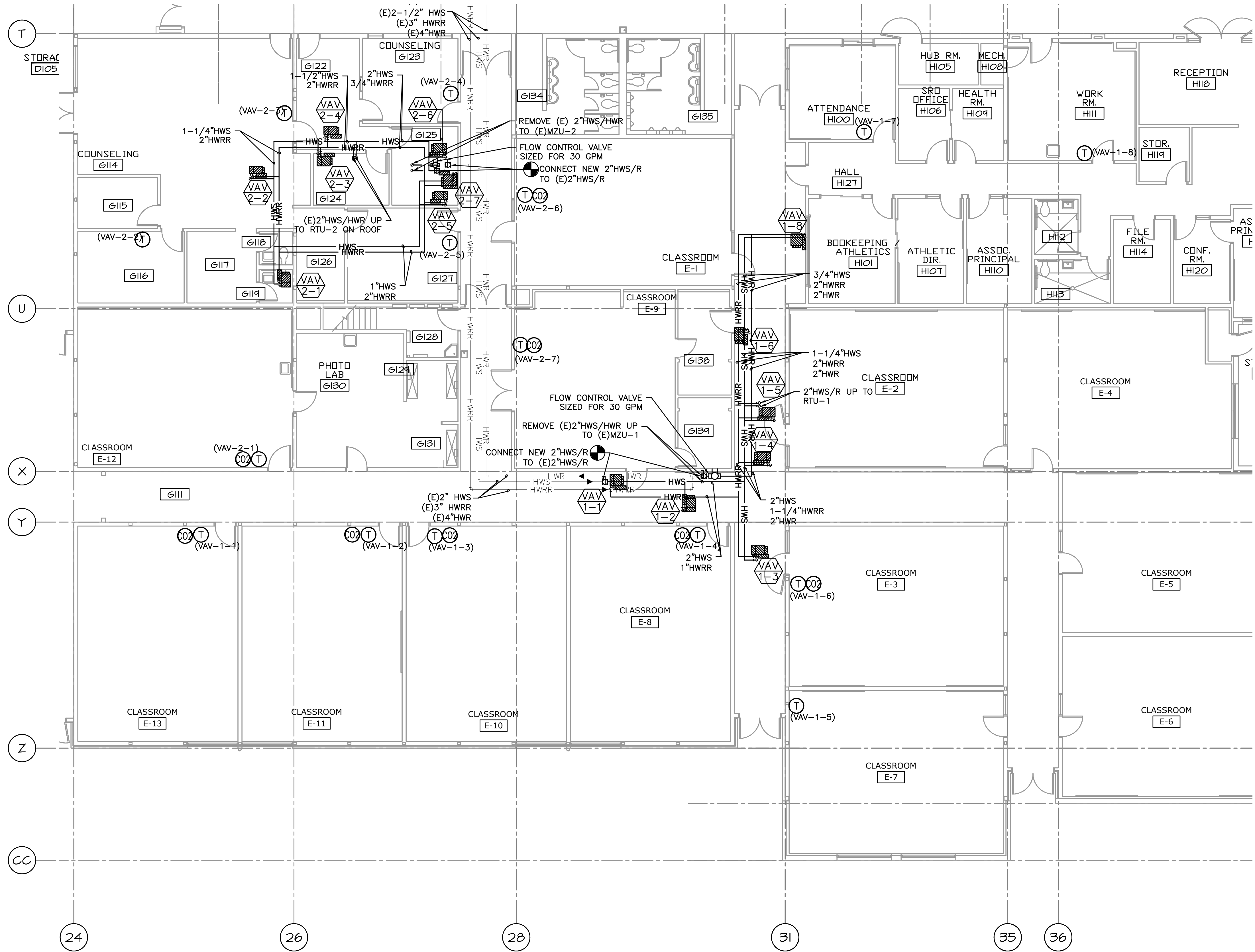


DRAWN BY:	EVK
CHECKED BY:	SWM
DATE:	1-30-18
TITLE:	PARTIAL FLOOR MECHANICAL PIPING PLAN
SCALE:	1/8" = 1'-0"

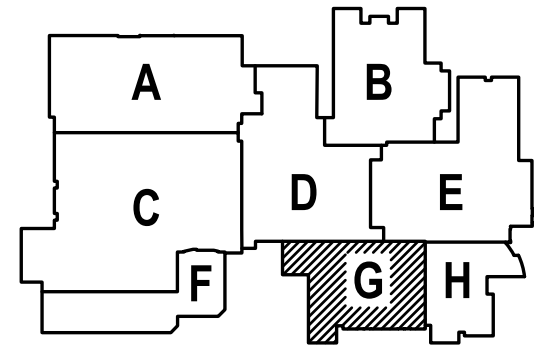
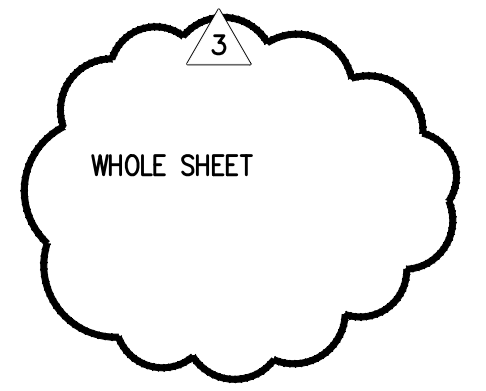
SHEET NO:	M-3.2
	2 OF 3

GENERAL SHEET NOTES:

- CONTRACTOR TO VERIFY LOCATION AND SIZES OF EXISTING DUCTWORK, PIPING, EQUIPMENT, CONTROLS, ETC. PRIOR TO COMMENCING WORK. IF SHOWN LOCATION OR SIZE DIFFER FROM PLANS, LOCATE THE CORRECT SIZE ON SITE AND ADJUST CONNECTION ACCORDINGLY. PROVIDE NEW DUCT, PIPING, EQUIPMENT, CONTROLS AND ETC. IF ONE IS NOT PRESENT.
- CONTRACTOR TO PROVIDE UL LISTED 3M FIRE STOPPING AT ALL NEW AND EXISTING PIPE AND DUCT PENETRATIONS, INCLUDING PENETRATIONS NOT SHOWN ON THE CONSTRUCTION DOCUMENTS.
- CONTRACTOR TO KEEP RECORD OF NEW SYSTEM, CONTROLS, PIPING, DUCTWORK INSTALLED AS WELL AS EXISTING TO REMAIN, AND ITEMS DISCOVERED OR ENCOUNTERED ON SITE THAT WERE NOT SHOWN ON THE PLANS. THESE INCLUDE SYSTEMS, DUCTWORK, PIPE, ETC THAT DO NOT AFFECT OR ARE NOT PART OF THE PROJECT SCOPE, BUT ARE WITHIN THE BOUNDARIES OF THE PROJECT SCOPE. CONTRACTOR IS RESPONSIBLE FOR PROVIDING AS-BUILT DRAWINGS THAT ACCURATELY REFLECT THE CONDITIONS WITHIN THE BOUNDARY OF THE PROJECT SCOPE AT THE END OF THE PROJECT.
- PIPING AND DUCTWORK LOCATIONS SHOWN ON THE PLAN ARE APPROXIMATE. CONTRACTOR TO VERIFY EXACT LOCATION PRIOR TO COMMENCING WORK.
- SEE VAV BOX AND HEATING COIL VALVES SCHEDULES ON M6.3 FOR 2-WAY OR 3-WAY CONTROL VALVE.
- SEE M6.1-M6.7 FOR MECHANICAL LEGEND, SCHEDULES AND DETAILS.
- PROVIDE ACCESS PANEL IF NECESSARY IN HARD LID CEILING OR WALL FOR ACCESS TO VAV UNITS OR HVAC EQUIPMENT THAT REQUIRES MAINTENANCE.
- REPLACE ZONE SENSOR WITH NEW DIGITAL DEVICE. LABEL WITH ASSOCIATED EQUIPMENT INFORMATION. WHERE NLL SENSOR IS NO LONGER USED PROVIDE A STAINLESS STEEL COVER PLATE OVER HOLE & SECURE.



1 PARTIAL FLOOR MECHANICAL PIPING PLAN
M3.3 SCALE: 1/8"=1'-0"



SHEET IS REVISED PER ADDENDUM #2.



PAUL L BENTLEY Architect A.I.A. P.C.

- 1 --ADD #2 2/22/2018
- 3 --PHASE#2 6.12.18

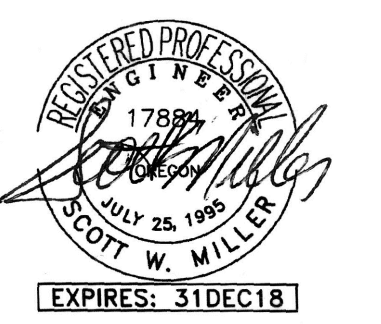
CONSTRUCTION SET-6.10.18

MFA Consulting Engineers
 2007 S.E. Ash St.
 Portland, OR 97214
 PHN: (503) 234-0548
 FAX: (503) 234-0677
 WWW.MFA-ENG.COM
 CONTACT: Elena von Kamerns

A NEW REMODEL PROJECT FOR:

SHERWOOD HIGH SCHOOL

16956 SW MEINCKE ROAD SHERWOOD, OR



DRAWN BY:	EVK
CHECKED BY:	SWM
DATE:	1-30-18
TITLE:	PARTIAL FLOOR MECHANICAL PIPING PLAN
SCALE:	1/8" = 1'-0"

SHEET NO:	M-3.3
	3 OF 3