

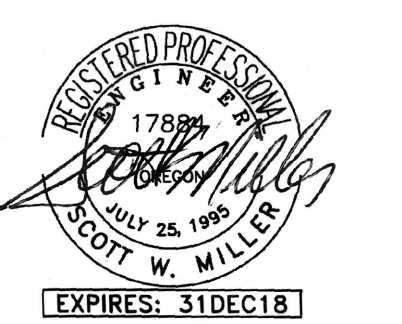
- 1 - ADD #2 2/22/2018
- 2 - ADD #3 3/2/2018
- 3 - PHASE#2 6.12.18

CONSTRUCTION SET-6.10.18
MFA Consulting Engineers
 2007 S.E. Ash St.
 Portland, OR 97214
 PHN: (503) 234-0548
 FAX: (503) 234-0677
 WWW.MFA-ENG.COM
 CONTACT: Elena von Kaments

A NEW REMODEL PROJECT FOR:

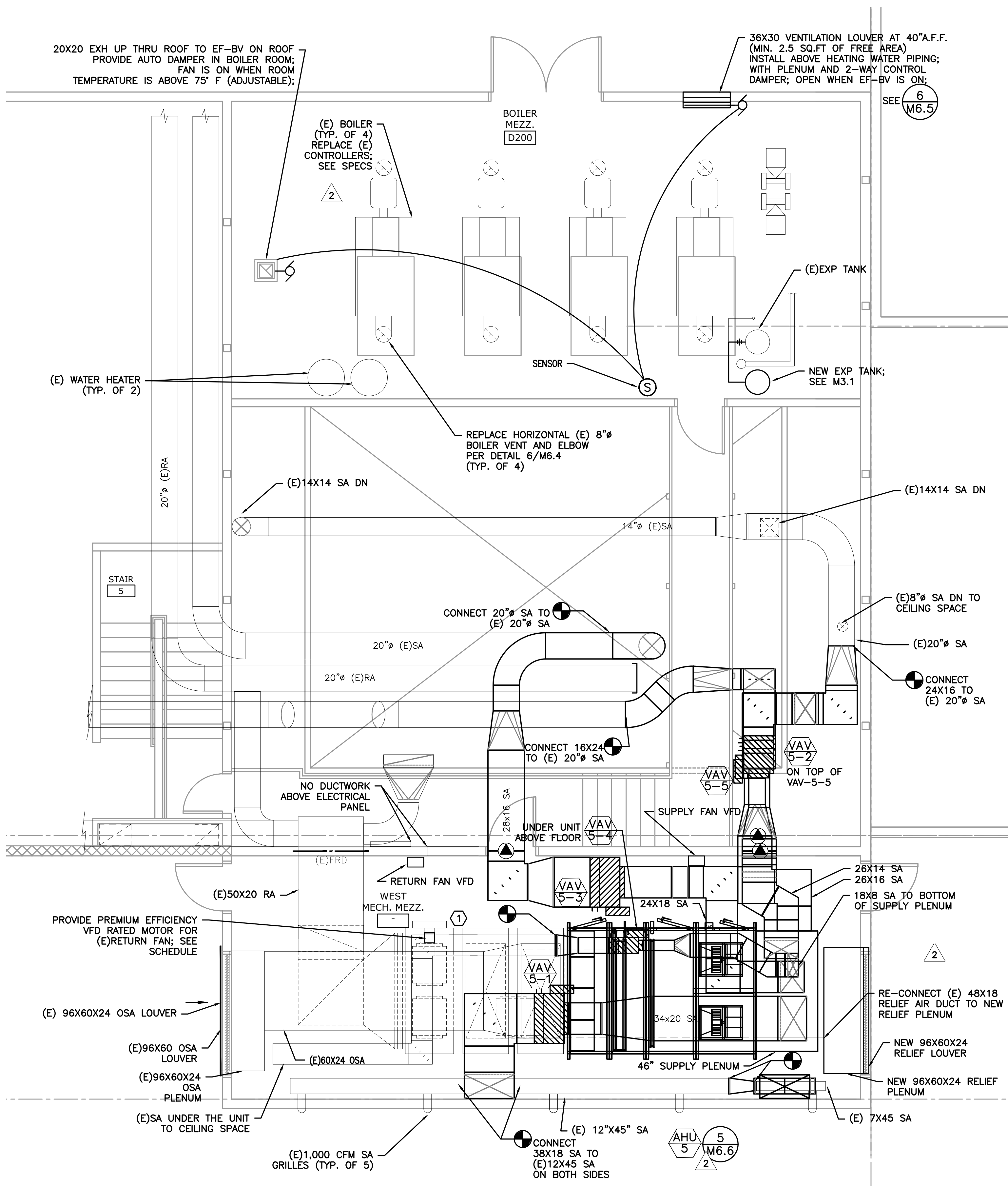
SHERWOOD HIGH SCHOOL

SHERWOOD, OR
16956 SW MEINCKE ROAD



DRAWN BY:	EVK
CHECKED BY:	SWM
DATE:	1-30-18
TITLE:	PARTIAL HVAC FLOOR PLANS
SCALE:	1/8" = 1'-0"

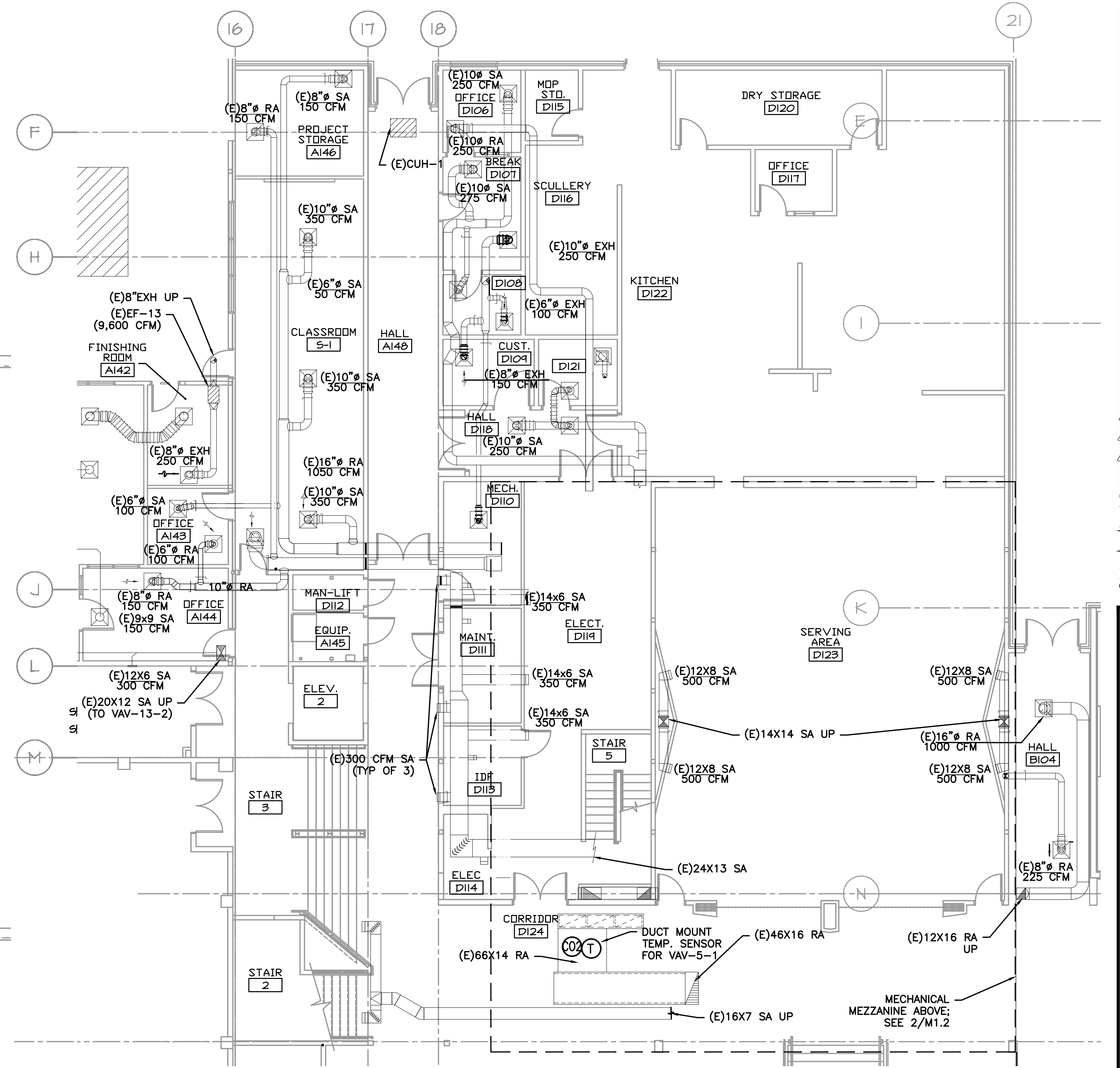
SHEET NO:	M-1.2
	2 OF 6



2 MECHANICAL MEZZ FLOOR PLAN
 SCALE: 1/4" = 1'-0"

- GENERAL SHEET NOTES:**
- CONTRACTOR TO VERIFY LOCATION AND SIZES OF EXISTING DUCTWORK, PIPING, EQUIPMENT, CONTROLS, ETC. PRIOR TO COMMENCING WORK. IF SHOWN LOCATION OR SIZE DIFFER FROM PLANS, LOCATE THE CORRECT SIZE ON SITE AND ADJUST CONNECTION ACCORDINGLY. PROVIDE NEW DUCT, PIPING, EQUIPMENT, CONTROLS AND ETC. IF ONE IS NOT PRESENT.
 - CONTRACTOR TO PROVIDE UL LISTED 3M FIRE STOPPING AT ALL NEW AND EXISTING PIPE AND DUCT PENETRATIONS, INCLUDING PENETRATIONS NOT SHOWN ON THE CONSTRUCTION DOCUMENTS.
 - CONTRACTOR TO KEEP RECORD OF NEW SYSTEM, CONTROLS, PIPING, DUCTWORK INSTALLED AS WELL AS EXISTING TO REMAIN, AND ITEMS DISCOVERED OR ENCOUNTERED ON SITE THAT WERE

- NOT SHOWN ON THE PLANS. THESE INCLUDE SYSTEMS, DUCTWORK, PIPE, ETC THAT DO NOT AFFECT OR ARE NOT PART OF THE PROJECT SCOPE, BUT ARE WITHIN THE BOUNDARIES OF THE PROJECT SCOPE. CONTRACTOR IS RESPONSIBLE FOR PROVIDING AS-BUILT DRAWINGS THAT ACCURATELY REFLECT THE CONDITIONS WITHIN THE BOUNDARY OF THE PROJECT SCOPE AT THE END OF THE PROJECT.
- PIPING AND DUCTWORK LOCATIONS SHOWN ON THE PLAN ARE APPROXIMATE. CONTRACTOR TO VERIFY EXACT LOCATION PRIOR TO COMMENCING WORK.
- SEE VAV BOX AND HEATING COIL VALVES SCHEDULES ON M6.3 FOR 2-WAY OR 3-WAY CONTROL VALVE.

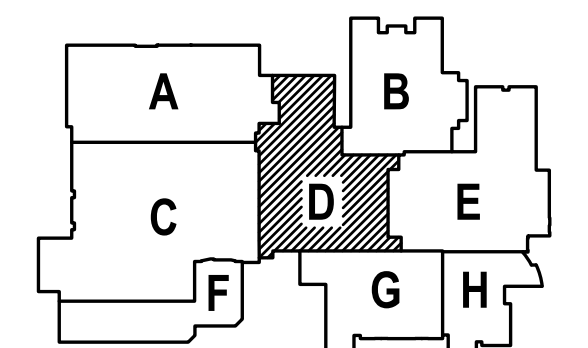
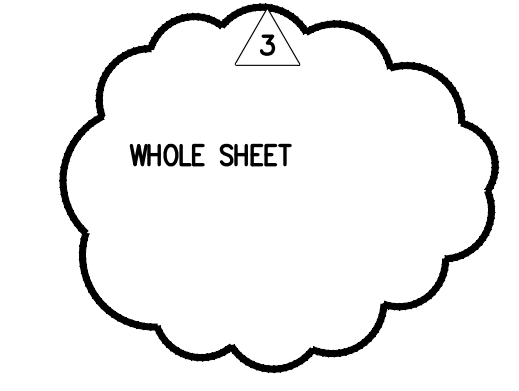


1 HVAC PARTIAL FLOOR PLAN
 SCALE: 1/8" = 1'-0"

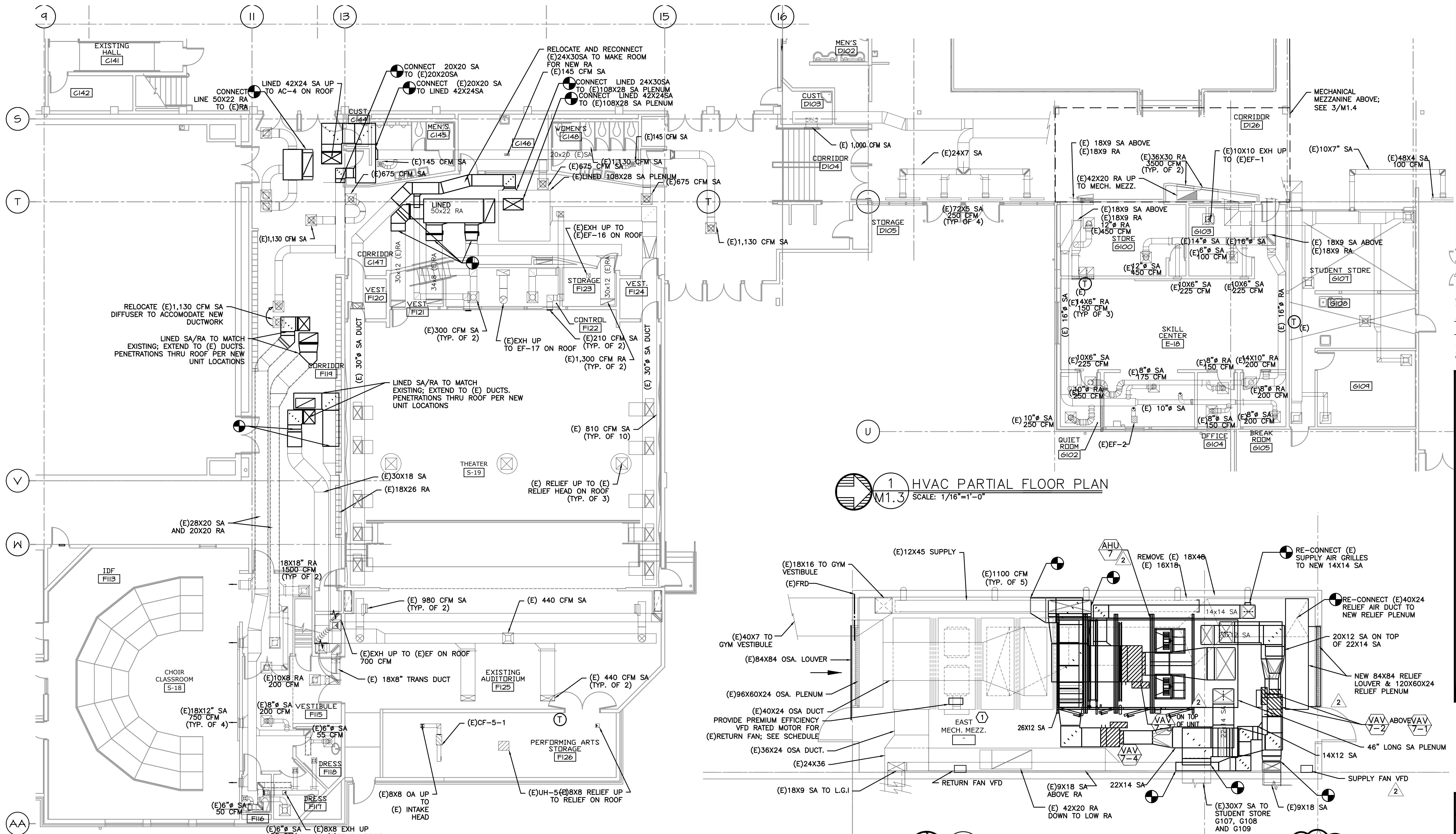
- SEE M6.1-M6.7 FOR MECHANICAL LEGEND, SCHEDULES AND DETAILS.
- PROVIDE ACCESS PANEL IF NECESSARY IN HARD LID CEILING OR WALL FOR ACCESS TO VAV UNITS OR HVAC EQUIPMENT THAT REQUIRES MAINTENANCE.
- PROVIDE VANES FOR ALL RECTANGULAR ELBOWS.
- PROVIDE MANUAL VOLUME DAMPERS IN ALL DUCT BRANCHES TO DIFFUSERS. LOCATE AS CLOSE TO MAIN TRUNK AS POSSIBLE IN ACCESSIBLE CEILING OR PROVIDE W/ REMOTE ACTUATOR PER SPEC.
- NEW AND MODIFIED HVAC UNITS: REBALANCE ALL EXISTING DIFFUSERS AND GRILLES SERVED BY THE SYSTEM TO AIR FLOW LISTED ON THE DRAWINGS.
- NOTE THAT FAN PERFORMANCE POINT IS DIFFERENT. PROVIDE SHEAVES SELECTED FOR CORRECT PERFORMANCE. REPLACE (E) FLEX CONNECTION BETWEEN UNIT AND RETURN, RELIEF & OSA DUCTWORK WITH NEW. REPLACE RETURN MOTOR, SEE DRAWING FOR SIZE. CONFIRM VOLTAGE ON SITE. MODIFY UNIT MOTOR MOUNT AS REQUIRED FOR NEW MOTOR. RE-BALANCE UNITS AND OUTLETS TO LISTED AIRFLOWS. REPLACE STARTER W/ VFD. COORDINATE W/ ELECTRICAL. COORDINATE W/ ELECTRICAL/CONTROLS FOR INSTALL. PROVIDE NEW EQUIPMENT TAG TO MATCH NEW DESIGNATION. PROVIDE NEW INTAKE, RELIEF AND MIXING DAMPERS. FOR UNIT REFURBISH, SEE SPECIFICATIONS FOR ADDITIONAL REQUIREMENTS.
- PROVIDE NEW FILTER, HEATING COIL, DX COOLING COIL AND SUPPLY FAN IN EXISTING AHU-5, 7 & 13 AND MODIFY HEATING WATER PIPING AS REQUIRED. SEE PIPING DIAGRAMS ON M6.7 FOR HEATING WATER COIL.
- AC-1-AC-7, MAU-1, DAH-1, F-1-F-6 GAS PIPING NOTE: MODIFY AND CONNECT GAS PIPING TO NEW UNITS AS REQUIRED.

KEYED NOTES:

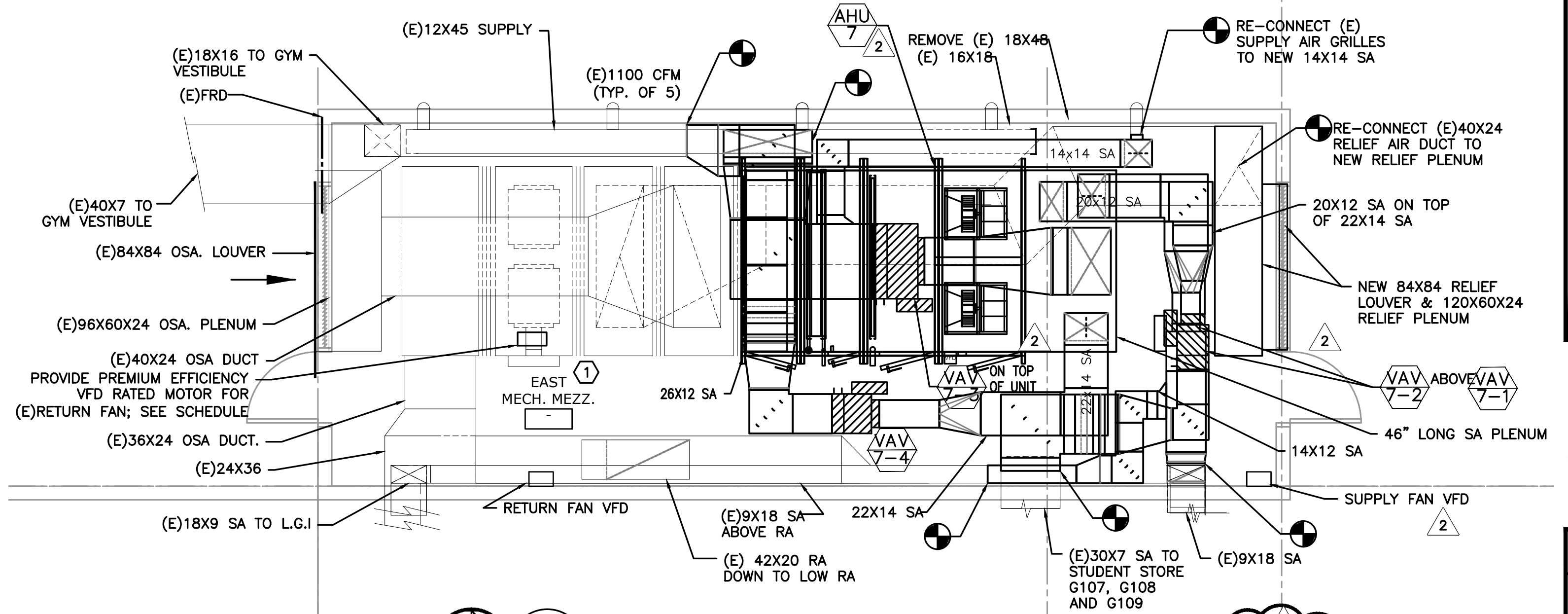
- REFURBISH UNIT. ALTER CONTROLS FROM MZU TO VAV SYSTEM. DEMO OF ALL (E) CONTROLS BY CONTROL CONTRACTOR. CLEAN CABINETS, & FAN WHEELS. REPLACE BELT, BEARINGS AND SHEAVES. REPLACE EXISTING LINING WHERE DAMAGED. COVER ALL EXISTING AND REPLACED LINING W/ PERFORATED LINER. SEE DETAIL 7 ON M6.5.



SHEET IS REVISED PER ADDENDUM #2.



1 HVAC PARTIAL FLOOR PLAN
M1.3 SCALE: 1/16"=1'-0"



2 ENLARGED MECH. MEZZ FLOOR PLAN
M1.3 SCALE: 1/4"=1'-0"

GENERAL SHEET NOTES:

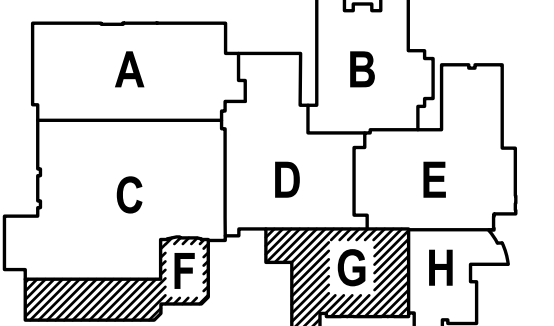
- CONTRACTOR TO VERIFY LOCATION AND SIZES OF EXISTING DUCTWORK, PIPING, EQUIPMENT, CONTROLS, ETC. PRIOR TO COMMENCING WORK. IF SHOWN LOCATION OR SIZE DIFFER FROM PLANS, LOCATE THE CORRECT SIZE ON SITE AND ADJUST CONNECTION ACCORDINGLY. PROVIDE NEW DUCT, PIPING, EQUIPMENT, CONTROLS AND ETC. IF ONE IS NOT PRESENT.
- CONTRACTOR TO PROVIDE UL LISTED 3M FIRE STOPPING AT ALL NEW AND EXISTING PIPE AND DUCT PENETRATIONS, INCLUDING PENETRATIONS NOT SHOWN ON THE CONSTRUCTION DOCUMENTS.
- CONTRACTOR TO KEEP RECORD OF NEW SYSTEM, CONTROLS, PIPING, DUCTWORK INSTALLED AS WELL AS EXISTING TO REMAIN, AND ITEMS DISCOVERED OR ENCOUNTERED ON SITE THAT WERE NOT SHOWN ON THE PLANS. THESE INCLUDE SYSTEMS, DUCTWORK, PIPE, ETC THAT DO NOT AFFECT OR ARE NOT PART OF THE PROJECT SCOPE, BUT ARE WITHIN THE BOUNDARIES OF THE PROJECT SCOPE. CONTRACTOR IS RESPONSIBLE FOR PROVIDING AS-BUILT DRAWINGS THAT ACCURATELY REFLECT THE CONDITIONS WITHIN THE BOUNDARY OF THE PROJECT SCOPE AT THE END OF THE PROJECT.
- PIPING AND DUCTWORK LOCATIONS SHOWN ON THE PLAN ARE APPROXIMATE. CONTRACTOR TO VERIFY EXACT LOCATION PRIOR TO COMMENCING WORK.
- SEE WAY BOX AND HEATING COIL VALVES SCHEDULES ON M6.3 FOR 2-WAY OR 3-WAY CONTROL VALVE.
- SEE M6.1-M6.7 FOR MECHANICAL LEGEND, SCHEDULES AND DETAILS.
- PROVIDE ACCESS PANEL IF NECESSARY IN HARD LID CEILING OR WALL FOR ACCESS TO VAV UNITS OR HVAC EQUIPMENT THAT REQUIRES MAINTENANCE.
- PROVIDE VANES FOR ALL RECTANGULAR ELBOWS.
- PROVIDE MANUAL VOLUME DAMPERS IN ALL DUCT BRANCHES TO DIFFUSERS. LOCATE AS CLOSE TO MAIN TRUNK AS POSSIBLE IN ACCESSIBLE CEILING OR PROVIDE W/ REMOTE ACTUATOR PER SPEC.
- NEW AND MODIFIED HVAC UNITS: REBALANCE ALL EXISTING DIFFUSERS AND GRILLES SERVED BY THE SYSTEM TO AIR FLOW LISTED ON THE DRAWINGS.

- NOTE THAT FAN PERFORMANCE POINT IS DIFFERENT. PROVIDE SHEAVES SELECTED FOR CORRECT PERFORMANCE. REPLACE (E) FLEX CONNECTION BETWEEN UNIT AND RETURN, RELIEF & OSA DUCTWORK WITH NEW. REPLACE RETURN MOTOR, SEE DRAWING FOR SIZE. CONFIRM VOLTAGE ON SITE. MODIFY UNIT MOTOR MOUNT AS REQUIRED FOR NEW MOTOR. RE-BALANCE UNITS AND OUTLETS TO LISTED AIRFLOWS. REPLACE STARTER W/ VFD. COORDINATE W/ ELECTRICAL. COORDINATE W/ ELECTRICAL/CONTROLS FOR INSTALL. PROVIDE NEW INTAKE, RELIEF AND MIXING DAMPERS. FOR UNIT REFURBISH, SEE SPECIFICATIONS FOR ADDITIONAL REQUIREMENTS.
- PROVIDE NEW FILTER, HEATING COIL, DX COOLING COIL AND SUPPLY FAN IN EXISTING AHU-5, 7 & 13 AND MODIFY HEATING WATER PIPING AS REQUIRED. SEE PIPING DIAGRAMS ON M6.7 FOR HEATING WATER COIL.
- AC-1-AC-7, MAU-1, DAH-1, F-1-F-6 GAS PIPING NOTE: MODIFY AND CONNECT GAS PIPING TO NEW UNITS AS REQUIRED.

KEYED NOTES:

- REFURBISH UNIT. ALTER CONTROLS FROM MZU TO VAV SYSTEM. DEMO OF ALL (E) CONTROLS BY CONTROL CONTRACTOR. CLEAN CABINETS, & FAN WHEELS. REPLACE BELT, BEARINGS AND SHEAVES. REPLACE EXISTING LINING WHERE DAMAGED. COVER ALL EXISTING AND REPLACED LINING W/ PERFORATED LINER. SEE DETAIL 7 ON M6.5.

WHOLE SHEET SHEET IS REVISED PER ADDENDUM #2.



1 - ADD #2 2/22/2018
2 - ADD #3 3/2/2018
3 - PHASE#2 6.12.18

CONSTRUCTION SET-6.10.18

MFA Consulting Engineers
2007 S.E. Ash St.
Portland, OR 97214
PHN: (503) 234-0518
FAX: (503) 234-0677
WWW.MFA-ENG.COM
CONTACT: Elena von Kaments

A NEW REMODEL PROJECT FOR:

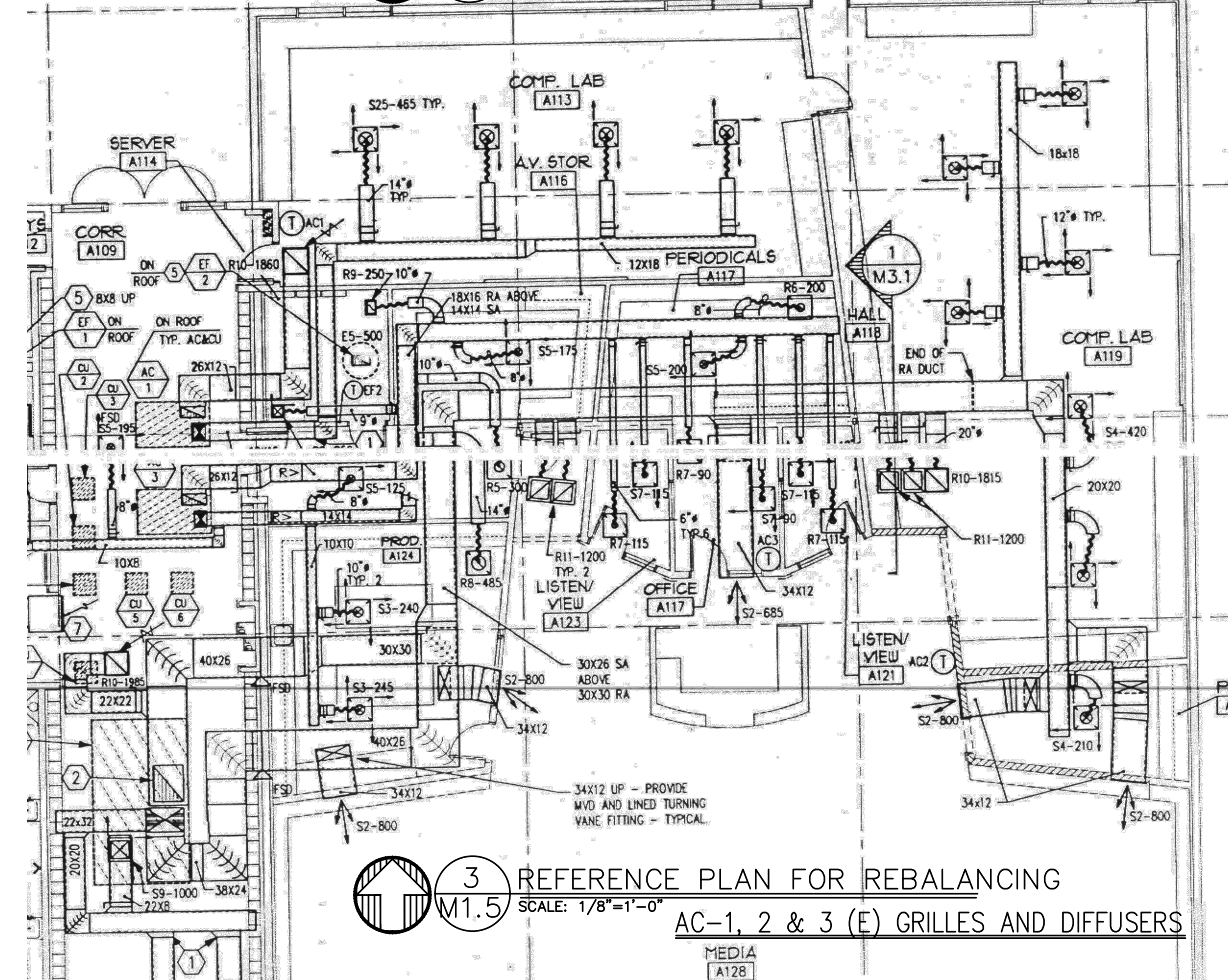
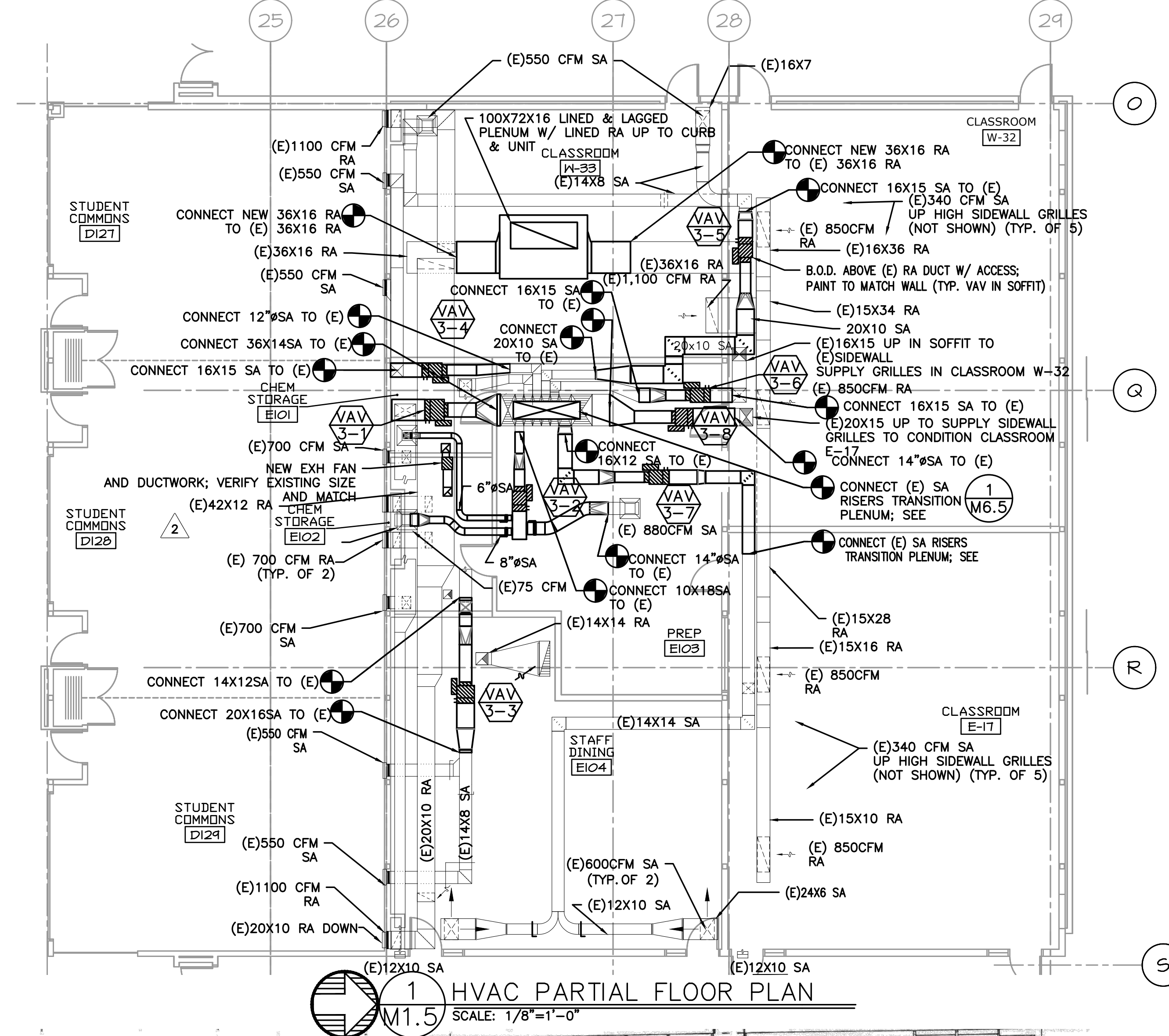
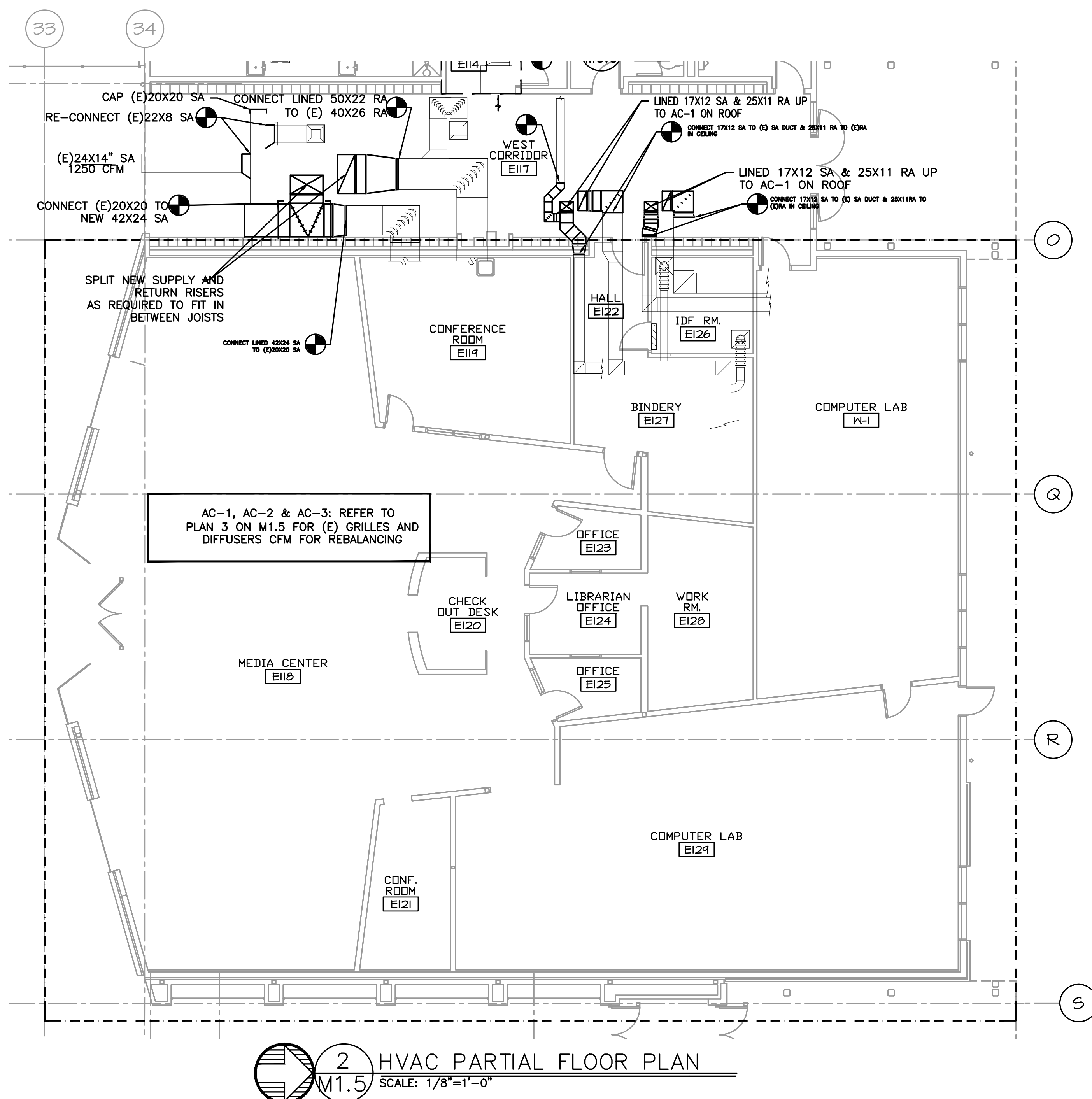
SHERWOOD HIGH SCHOOL

16956 SW MEINCKE ROAD
SHERWOOD, OR

REGISTERED PROFESSIONAL ENGINEER
17884
JULY 25 1989
SCOTT W. WILLEY
EXPIRES: 31DEC18

DRAWN BY: EVK
CHECKED BY: SWM
DATE: 1-30-18
TITLE: PARTIAL HVAC FLOOR PLANS
SCALE: 1/8" = 1'-0"

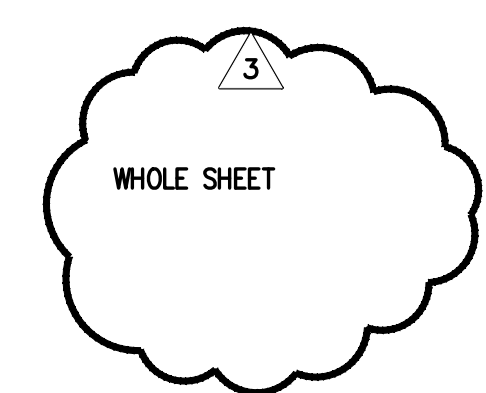
SHEET NO:
M-1.3
3 OF 6



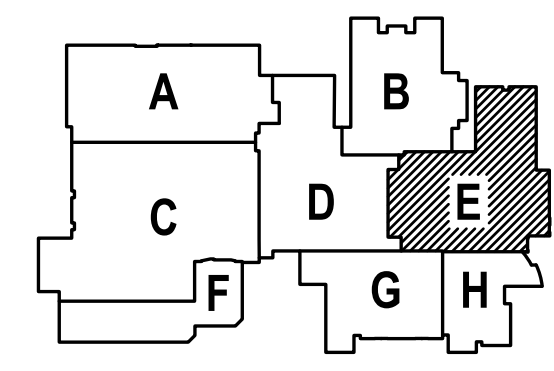
AC-1, AC-2 & AC-3: REFER TO PLAN 3 ON M1.5 FOR (E) GRILLES AND DIFFUSERS CFM FOR REBALANCING

GENERAL SHEET NOTES:

- CONTRACTOR TO VERIFY LOCATION AND SIZES OF EXISTING DUCTWORK, PIPING, EQUIPMENT, CONTROLS, ETC. PRIOR TO COMMENCING WORK. IF SHOWN LOCATION OR SIZE DIFFER FROM PLANS, LOCATE THE CORRECT SIZE ON SITE AND ADJUST CONNECTION ACCORDINGLY. PROVIDE NEW DUCT, PIPING, EQUIPMENT, CONTROLS AND ETC. IF ONE IS NOT PRESENT.
- CONTRACTOR TO PROVIDE UL LISTED 3M FIRE STOPPING AT ALL NEW AND EXISTING PIPE AND DUCT PENETRATIONS, INCLUDING PENETRATIONS NOT SHOWN ON THE CONSTRUCTION DOCUMENTS.
- CONTRACTOR TO KEEP RECORD OF NEW SYSTEM, CONTROLS, PIPING, DUCTWORK INSTALLED AS WELL AS EXISTING TO REMAIN, AND ITEMS DISCOVERED OR ENCOUNTERED ON SITE THAT WERE NOT SHOWN ON THE PLANS. THESE INCLUDE SYSTEMS, DUCTWORK, PIPE, ETC THAT DO NOT AFFECT OR ARE NOT PART OF THE PROJECT SCOPE, BUT ARE WITHIN THE BOUNDARIES OF THE PROJECT SCOPE. CONTRACTOR IS RESPONSIBLE FOR PROVIDING AS-BUILT DRAWINGS THAT ACCURATELY REFLECT THE CONDITIONS WITHIN THE BOUNDARY OF THE PROJECT SCOPE AT THE END OF THE PROJECT.
- PIPING AND DUCTWORK LOCATIONS SHOWN ON THE PLAN ARE APPROXIMATE. CONTRACTOR TO VERIFY EXACT LOCATION PRIOR TO COMMENCING WORK.
- SEE M6.1-M6.7 FOR MECHANICAL LEGEND, SCHEDULES AND DETAILS.
- PROVIDE ACCESS PANEL IF NECESSARY IN HARD LID CEILING OR WALL FOR ACCESS TO VAV UNITS OR HVAC EQUIPMENT THAT REQUIRES MAINTENANCE.
- PROVIDE VANES FOR ALL RECTANGULAR ELBOWS.
- PROVIDE MANUAL VOLUME DAMPERS IN ALL DUCT BRANCHES TO DIFFUSERS. LOCATE AS CLOSE TO MAIN TRUNK AS POSSIBLE IN ACCESSIBLE CEILING OR PROVIDE W/ REMOTE ACTUATOR PER SPEC.
- NEW AND MODIFIED HVAC UNITS: REBALANCE ALL EXISTING DIFFUSERS AND GRILLES SERVED BY THE SYSTEM TO AIR FLOW LISTED ON THE DRAWINGS.
- NOTE THAT FAN PERFORMANCE POINT IS DIFFERENT. PROVIDE SHEAVES SELECTED FOR CORRECT PERFORMANCE. REPLACE (E) FLEX CONNECTION BETWEEN UNIT AND RETURN, RELIEF & OSA DUCTWORK WITH NEW. REPLACE RETURN MOTOR, SEE DRAWING FOR SIZE. CONFIRM VOLTAGE ON SITE. MODIFY UNIT MOTOR MOUNT AS REQUIRED FOR NEW MOTOR. RE-BALANCE UNITS AND OUTLETS TO LISTED AIRFLOWS. REPLACE STARTER W/ VFD. COORDINATE W/ ELECTRICAL. COORDINATE W/ ELECTRICAL/CONTROLS FOR INSTALL. PROVIDE NEW EQUIPMENT TAG TO MATCH NEW DESIGNATION. PROVIDE NEW INTAKE, RELIEF AND MIXING DAMPERS. FOR UNIT REFURBISH, SEE SPECIFICATIONS FOR ADDITIONAL REQUIREMENTS.
- PROVIDE NEW FILTER, HEATING COIL, DX COOLING COIL AND SUPPLY FAN IN EXISTING AHU-5, 7 & 13 AND MODIFY HEATING WATER PIPING AS REQUIRED. SEE PIPING DIAGRAMS ON M6.7 FOR HEATING WATER COIL.
- AC-1-AC-7, MAU-1, DAH-1, F-1-F-6 GAS PIPING NOTE: MODIFY AND CONNECT GAS PIPING TO NEW UNITS AS REQUIRED.



SHEET IS REVISED PER ADDENDUM #2.





PAUL L BENTLEY Architect A.I.A. P.C.

615 SE JACOBSON STREET
PORTLAND, OR 97214
503.472.8273 OFFICE
503.472.8273 FAX
P.L.B@PAULBENTLEYARCHITECT.COM

CONSTRUCTION SET 6.10.18

MEDIA Consulting Engineers
2007 S.E. Ash St.
Portland, OR 97214
PHN: (503) 234-0548
FAX: (503) 234-0677
WWW.MEDIA-ENG.COM
CONTACT: Elena von Kaments

SHERWOOD HIGH SCHOOL

A NEW REMODEL PROJECT FOR:

SHERWOOD, OR
16956 SW MEINCKE ROAD

M-1.5

5 OF 6

REGISTERED PROFESSIONAL ENGINEER
17889
SCOTT W. WILLES
EXPIRES: 31DEC18

DRAWN BY:	EVK
CHECKED BY:	SWM
DATE:	1-30-18
TITLE:	HVAC PARTIAL FLOOR PLANS
SCALE:	1/8" = 1'-0"
SHEET NO:	M-1.5
	5 OF 6



615 SE JACKSON STREET
 PORTLAND, OR 97214
 PH: (503) 234-0548
 FAX: (503) 234-0677
 WWW.MFA-ENG.COM
 CONTACT: ELENA VON KAMENTS

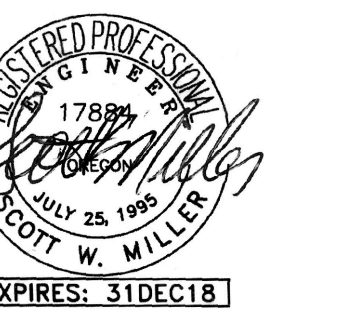
PAUL L BENTLEY Architect A.I.A. P.C.

- 1 - ADD #2 2/22/2018
- 2 - ADD #3 3/2/2018
- 3 - PHASE #2 6.12.18

CONSTRUCTION SET-6.10.18

MFA
 Consulting Engineers
 2007 S.E. Ash St.
 Portland, OR 97214
 PH: (503) 234-0548
 FAX: (503) 234-0677
 WWW.MFA-ENG.COM
 CONTACT: ELENA VON KAMENTS

A NEW REMODEL PROJECT FOR:
SHERWOOD HIGH SCHOOL
 16956 SW MEINECKE ROAD
 SHERWOOD, OR

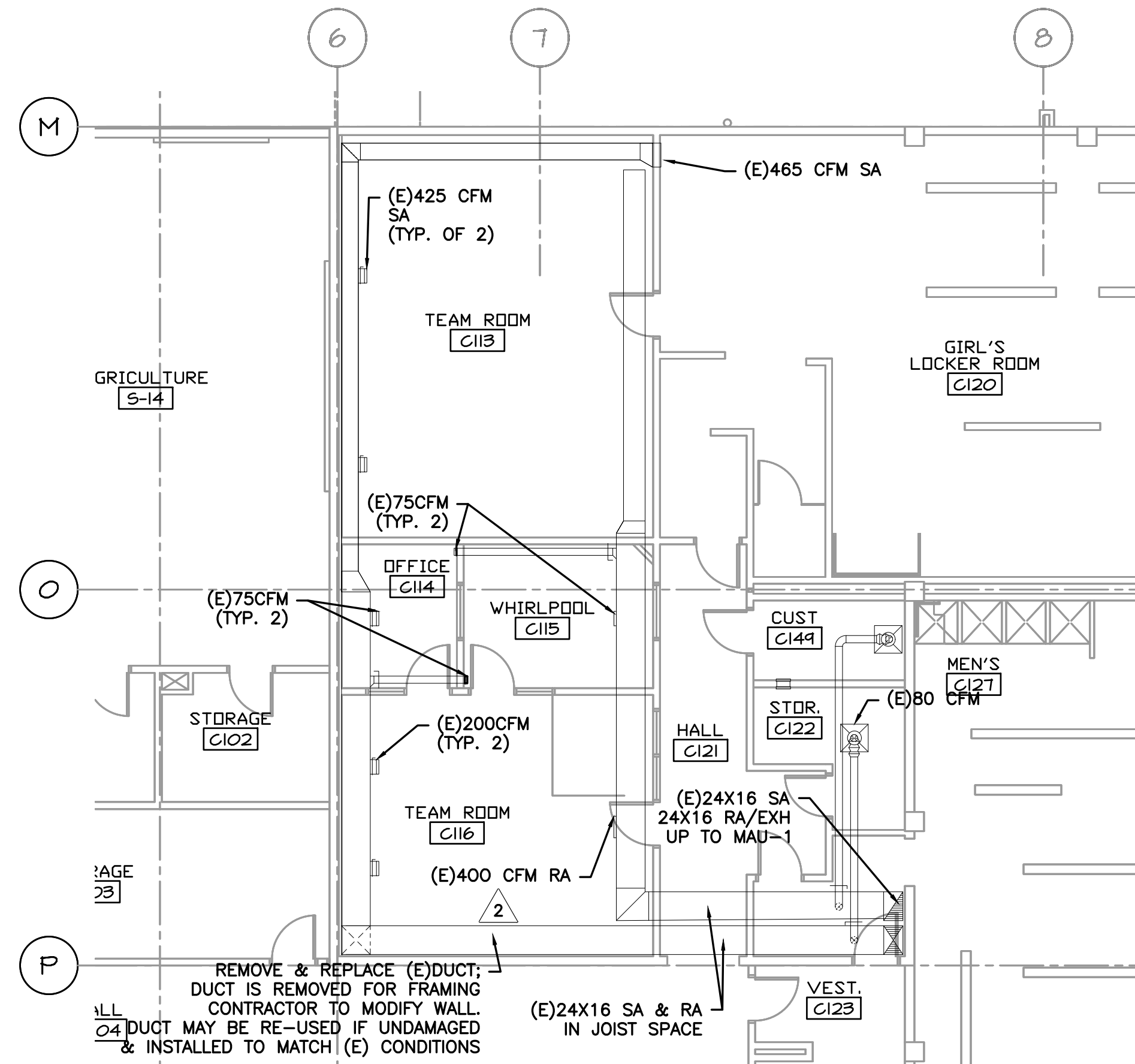


DRAWN BY:	EVK
CHECKED BY:	SWM
DATE:	1-30-18
TITLE:	HVAC PARTIAL FLOOR PLAN
SCALE:	1/8" = 1'-0"

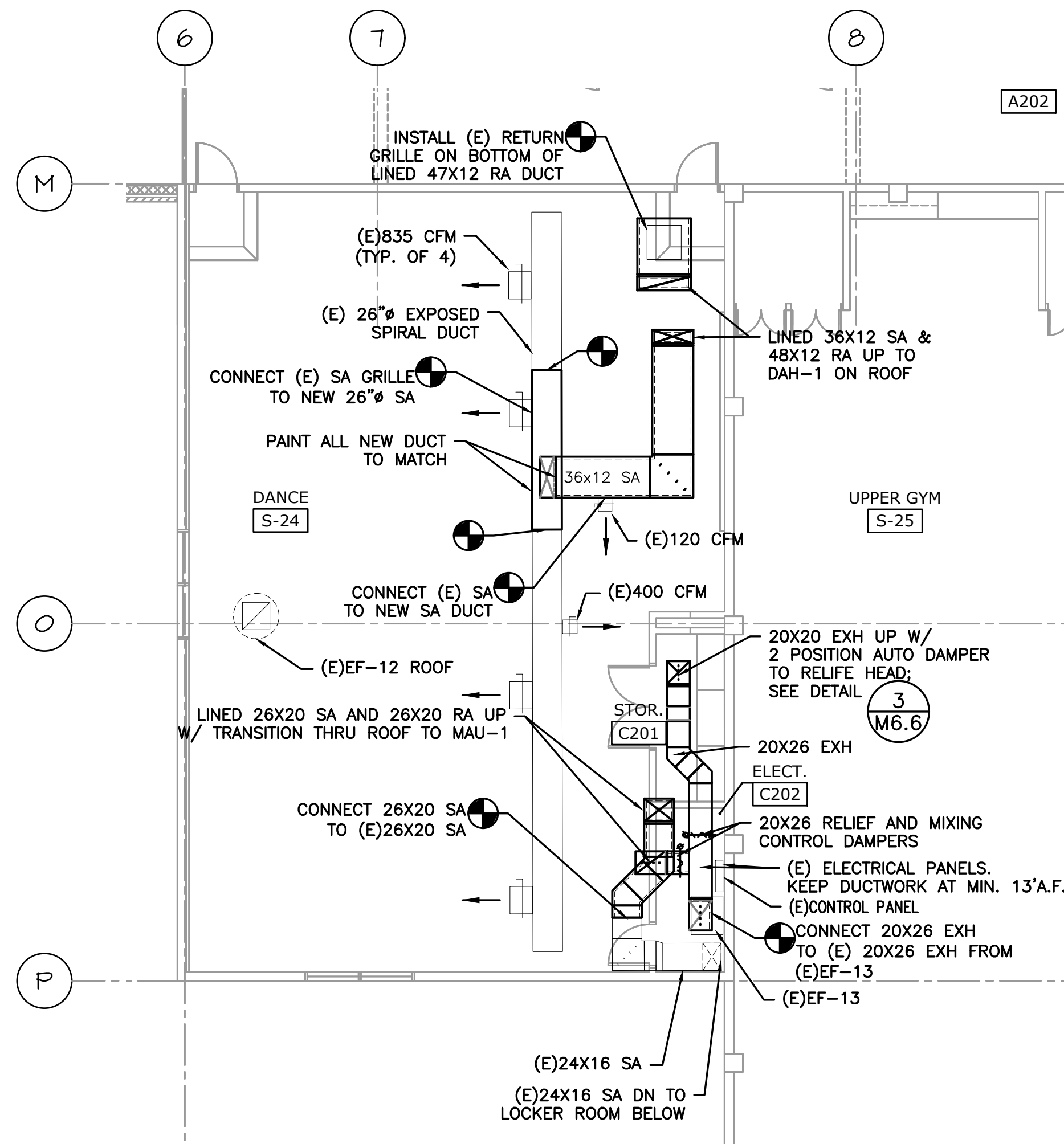
SHEET NO:	M-1.6
	6 OF 6

GENERAL SHEET NOTES:

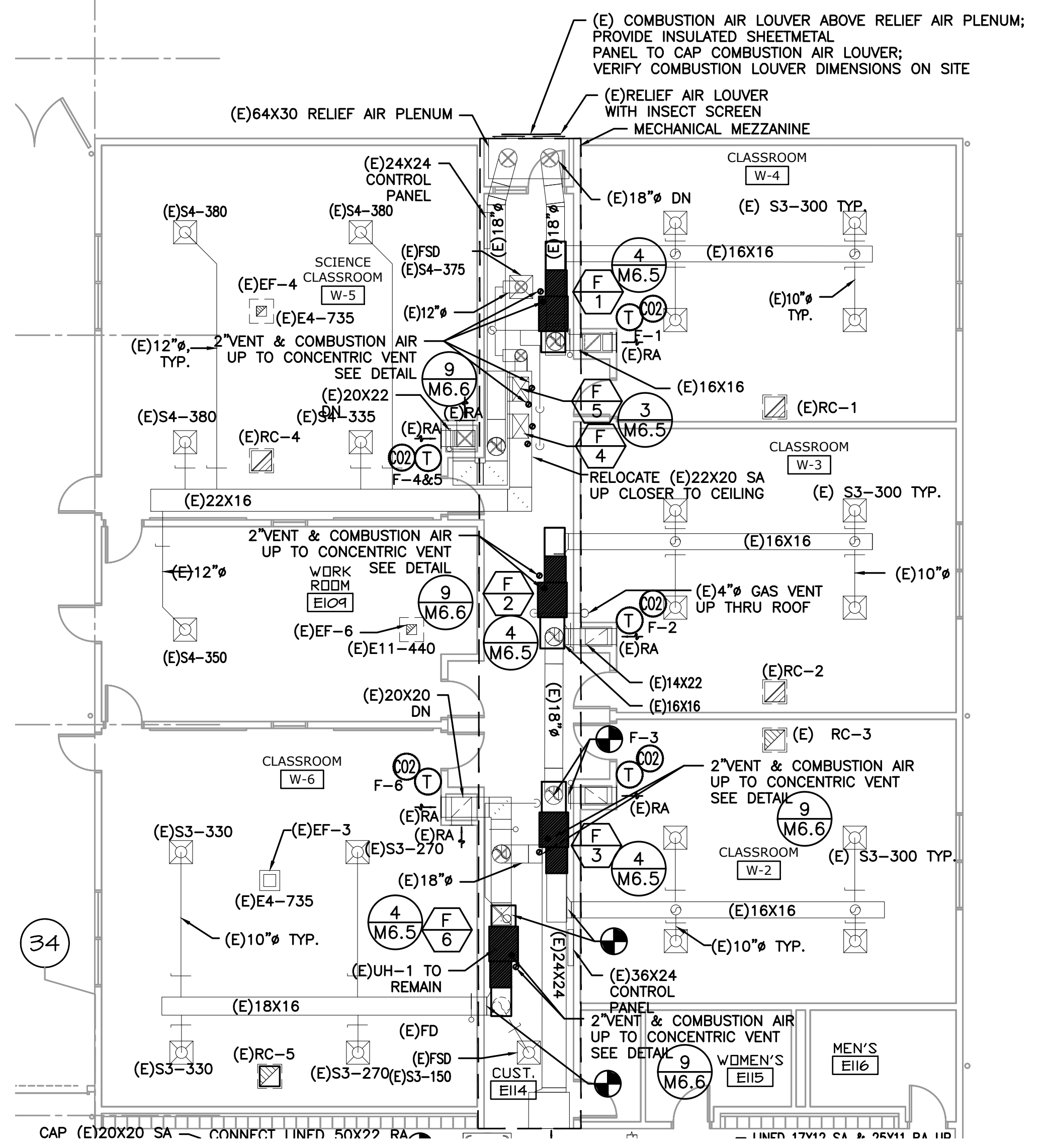
- CONTRACTOR TO VERIFY LOCATION AND SIZES OF EXISTING DUCTWORK, PIPING, EQUIPMENT, CONTROLS, ETC. PRIOR TO COMMENCING WORK. IF SHOWN LOCATION OR SIZE DIFFER FROM PLANS, LOCATE THE CORRECT SIZE ON SITE AND ADJUST CONNECTION ACCORDINGLY. PROVIDE NEW DUCT, PIPING, EQUIPMENT, CONTROLS AND ETC. IF ONE IS NOT PRESENT.
- CONTRACTOR TO PROVIDE UL LISTED 3M FIRE STOPPING AT ALL NEW AND EXISTING PIPE AND DUCT PENETRATIONS, INCLUDING PENETRATIONS NOT SHOWN ON THE CONSTRUCTION DOCUMENTS.
- CONTRACTOR TO KEEP RECORD OF NEW SYSTEM, CONTROLS, PIPING, DUCTWORK INSTALLED AS WELL AS EXISTING TO REMAIN, AND ITEMS DISCOVERED OR ENCOUNTERED ON SITE THAT WERE NOT SHOWN ON THE PLANS. THESE INCLUDE SYSTEMS, DUCTWORK, PIPE, ETC THAT DO NOT AFFECT OR ARE NOT PART OF THE PROJECT SCOPE, BUT ARE WITHIN THE BOUNDARIES OF THE PROJECT SCOPE. CONTRACTOR IS RESPONSIBLE FOR PROVIDING AS-BUILT DRAWINGS THAT ACCURATELY REFLECT THE CONDITIONS WITHIN THE BOUNDARY OF THE PROJECT SCOPE AT THE END OF THE PROJECT.
- PIPING AND DUCTWORK LOCATIONS SHOWN ON THE PLAN ARE APPROXIMATE. CONTRACTOR TO VERIFY EXACT LOCATION PRIOR TO COMMENCING WORK.
- SEE VAV BOX AND HEATING COIL VALVES SCHEDULES ON M6.3 FOR 2-WAY OR 3-WAY CONTROL VALVE.
- SEE M6.1-M6.7 FOR MECHANICAL LEGEND, SCHEDULES AND DETAILS.
- PROVIDE ACCESS PANEL IF NECESSARY IN HARD LID CEILING OR WALL FOR ACCESS TO VAV UNITS OR HVAC EQUIPMENT THAT REQUIRES MAINTENANCE.
- PROVIDE VANES FOR ALL RECTANGULAR ELBOWS.
- PROVIDE MANUAL VOLUME DAMPERS IN ALL DUCT BRANCHES TO DIFFUSERS. LOCATE AS CLOSE TO MAIN TRUNK AS POSSIBLE IN ACCESSIBLE CEILING OR PROVIDE W/ REMOTE ACTUATOR PER SPEC.
- NEW AND MODIFIED HVAC UNITS: REBALANCE ALL EXISTING DIFFUSERS AND GRILLES SERVED BY THE SYSTEM TO AIR FLOW LISTED ON THE DRAWINGS.
- NOTE THAT FAN PERFORMANCE POINT IS DIFFERENT. PROVIDE SHEAVES SELECTED FOR CORRECT PERFORMANCE. REPLACE (E) FLEX CONNECTION BETWEEN UNIT AND RETURN, RELIEF & OSA DUCTWORK WITH NEW. REPLACE RETURN MOTOR, SEE DRAWING FOR SIZE. CONFIRM VOLTAGE ON SITE. MODIFY UNIT MOTOR MOUNT AS REQUIRED FOR NEW MOTOR. RE-BALANCE UNITS AND OUTLETS TO LISTED AIRFLOWS. REPLACE STARTER W/ VFD. COORDINATE W/ ELECTRICAL. COORDINATE W/ ELECTRICAL/CONTROLS FOR INSTALL. PROVIDE NEW EQUIPMENT TAG TO MATCH NEW DESIGNATION. PROVIDE NEW INTAKE, RELIEF AND MIXING DAMPERS. FOR UNIT REFURBISH, SEE SPECIFICATIONS FOR ADDITIONAL REQUIREMENTS.
- PROVIDE NEW FILTER, HEATING COIL, DX COOLING COIL AND SUPPLY FAN IN EXISTING AHU-5, 7 & 13 AND MODIFY HEATING WATER PIPING AS REQUIRED. SEE PIPING DIAGRAMS ON M6.7 FOR HEATING WATER COIL.
- AC-1-AC-7, MAU-1, DAH-1, F-1-F-6 GAS PIPING NOTE: MODIFY AND CONNECT GAS PIPING TO NEW UNITS AS REQUIRED.



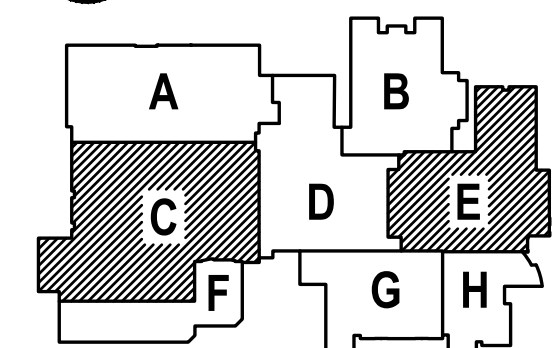
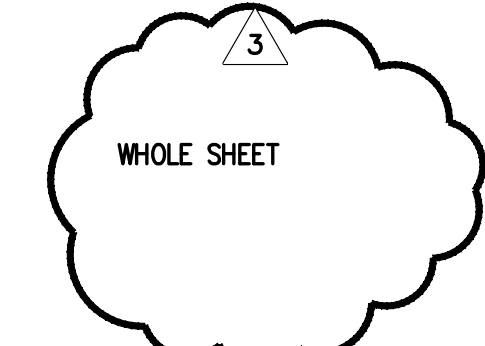
2 PARTIAL FIRST FLOOR HVAC PLAN
 SCALE: 1/8"=1'-0"



3 PARTIAL SECOND FLOOR HVAC PLAN
 SCALE: 1/8"=1'-0"



1 HVAC PARTIAL FLOOR PLAN
 SCALE: 1/8"=1'-0"



SHEET IS REVISED PER ADDENDUM #2.