



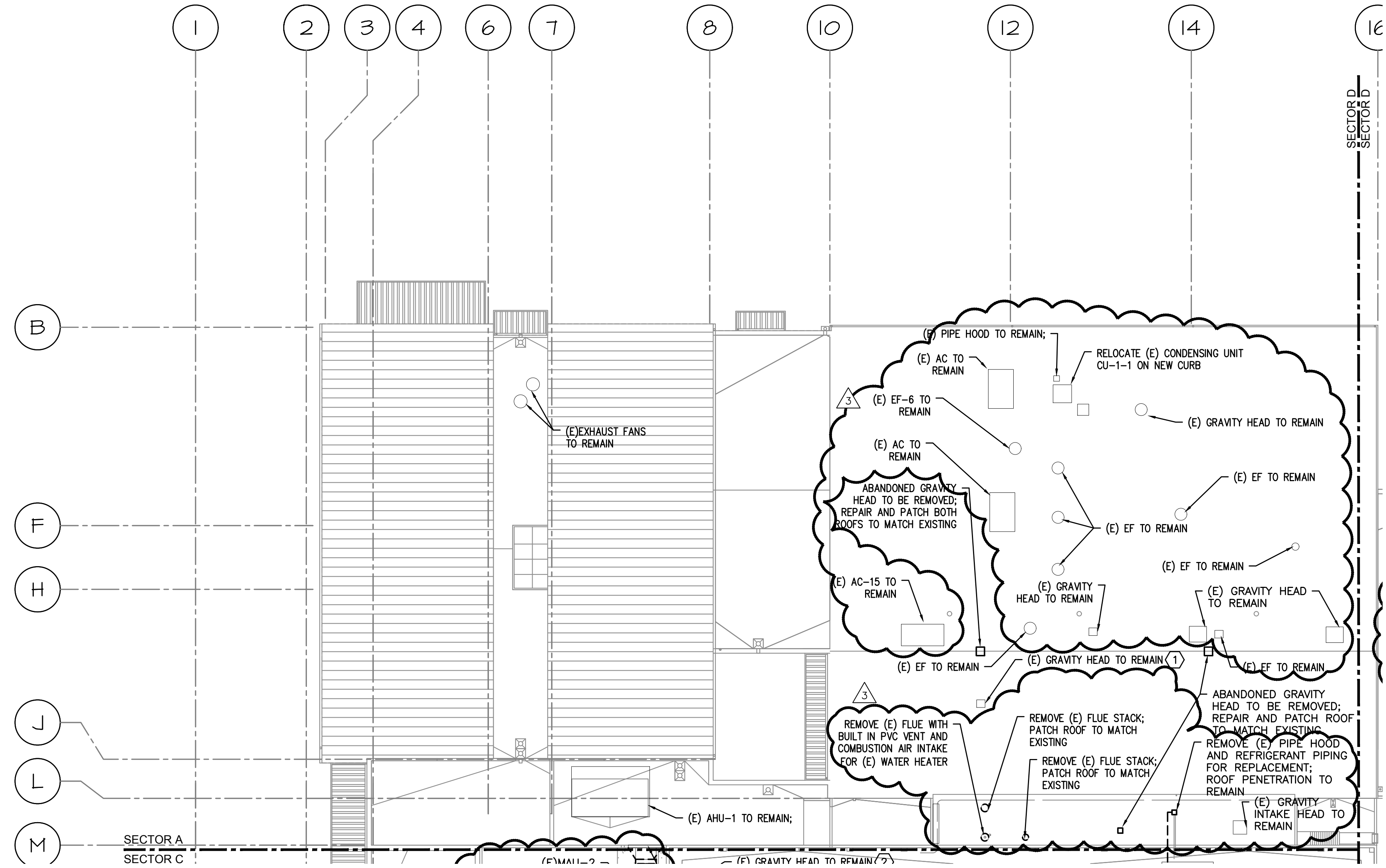
615 SE JACKSON STREET
 PORTLAND, OR 97214
 503.234.0548
 503.234.0548
 503.234.0548

PAUL L BENTLEY Architect A.I.A. P.C.

1 - ADD #2 2/22/2018
 3 - PHASE #2 6.12.18

CONSTRUCTION SET 6.10.18

M Consulting Engineers
 2007 S.E. Ash St.
 Portland, OR 97214
 PHN: (503) 234-0548
 FAX: (503) 234-0677
 WWW.MPIA-ENG.COM
 CONTACT: Elena von Kaments



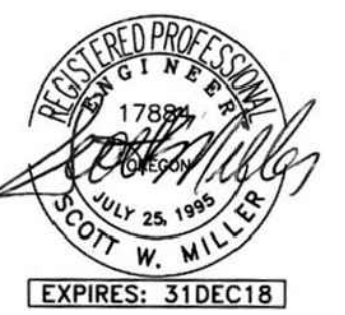
1 HVAC ROOF DEMO PLAN - SECTOR A
 DM2.1 SCALE: 1/16"=1'-0"

KEYED NOTES:

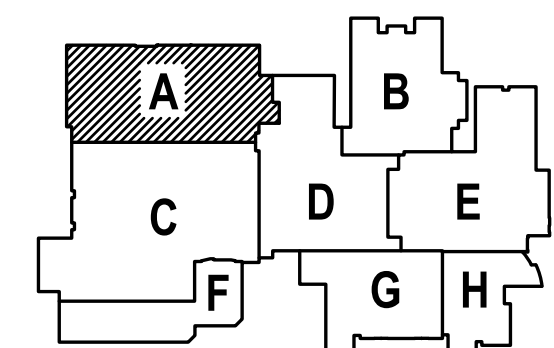
- 1 - REMOVE AND REINSTALL MECHANICAL EQUIPMENT FOR ROOF REPLACEMENT; SEE ARCHITECTURAL FOR FLASHING.



SHEET IS REVISED PER ADDENDUM #2.



DRAWN BY:	EVK
CHECKED BY:	SWM
DATE:	1-30-18
TITLE:	HVAC ROOF DEMO PLAN- SECTOR A
SCALE:	1/16" = 1'-0"



SHEET NO:	DM-2.1
OF	7

A NEW REMODEL PROJECT FOR:
SHERWOOD HIGH SCHOOL
 16956 SW MEINECKE ROAD
 SHERWOOD, OR



615 SE JACKSON STREET
 PORTLAND, OR 97214
 503.472.8273 OFFICE
 503.472.7560 FAX
 paul@paulbentleyarchitect.com

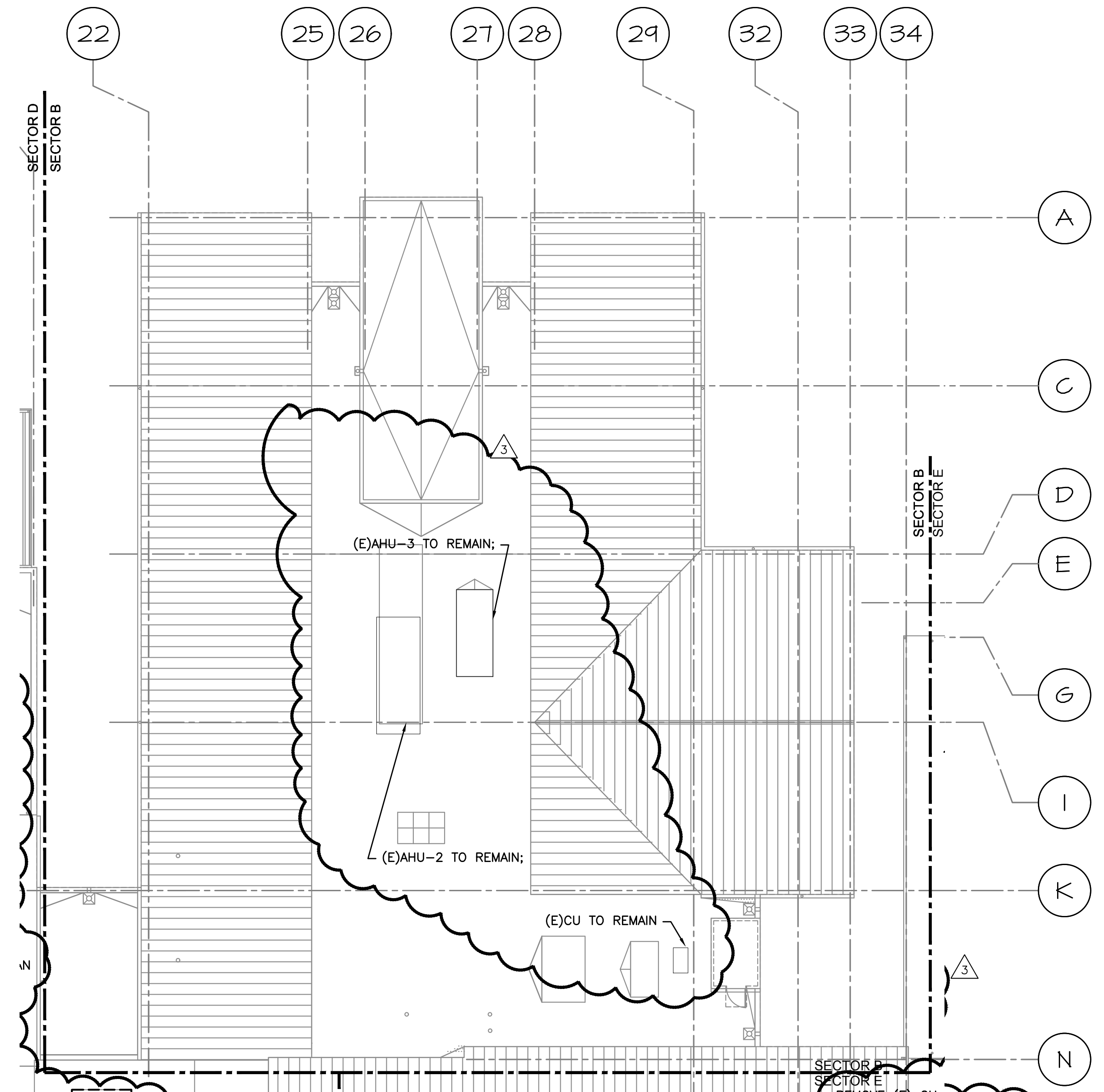
PAUL L BENTLEY Architect A.I.A. P.C.

1 - ADD #2 2/22/2018
 3 - PHASE#2 6.12.18

CONSTRUCTION SET 6.10.18

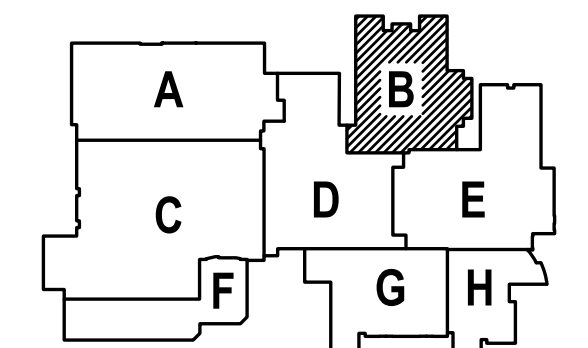
M Consulting Engineers
E 2007 S.E. Ash St.
I Portland, OR 97214
A PHN: (503) 234-0548
 INC. FAX: (503) 234-0677
 WWW.MEIA-ENG.COM
 CONTACT: Elena von Kamens

A NEW REMODEL PROJECT FOR:
SHERWOOD HIGH SCHOOL
 16956 SW MEINCKE ROAD
 SHERWOOD, OR



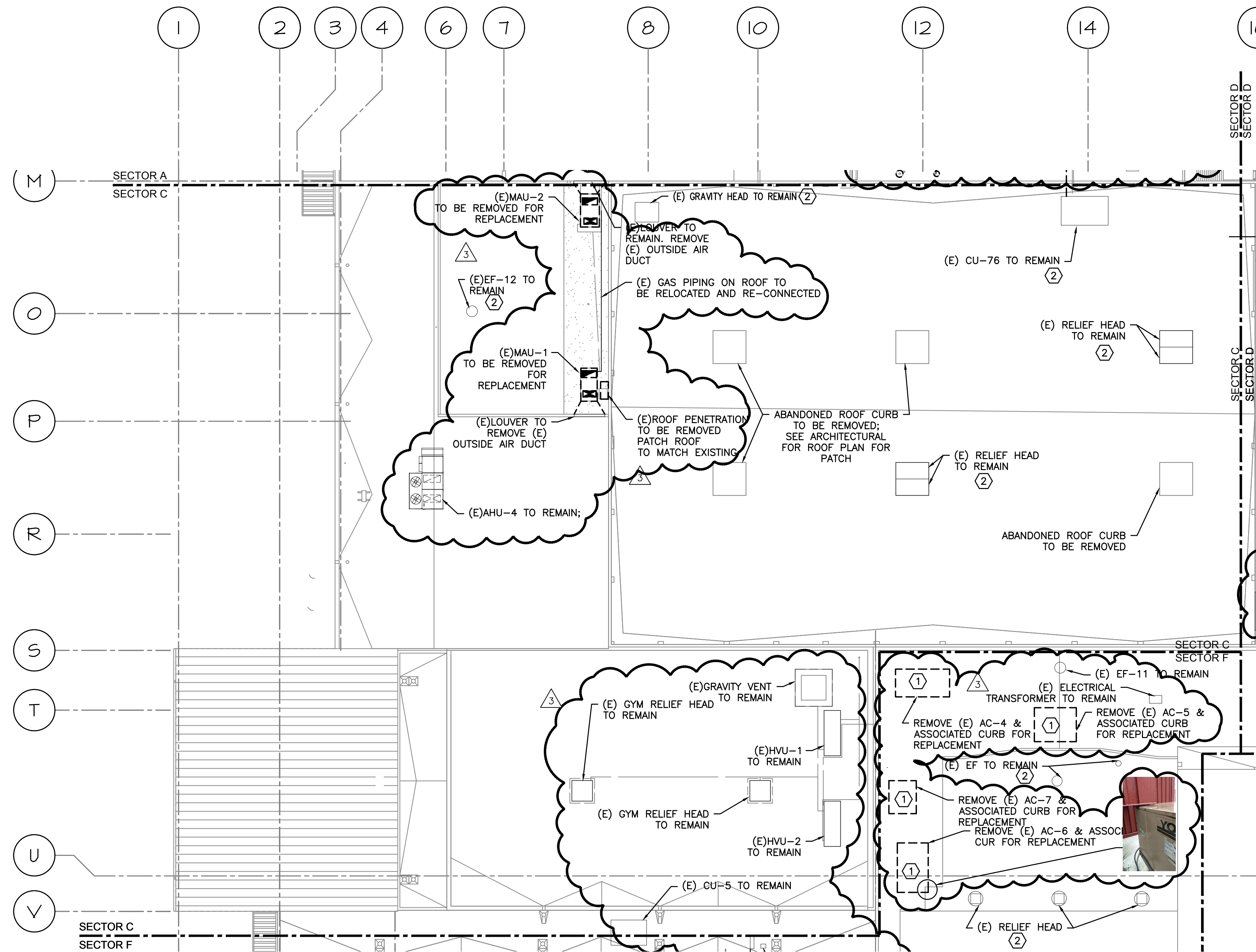
1 HVAC ROOF PLAN-SECTOR B
 DM2.2 SCALE: 1/16"=1'-0"

△
 SHEET IS REVISED PER ADDENDUM #2.



DRAWN BY:	EVK
CHECKED BY:	SWM
DATE:	1-30-18
TITLE:	HVAC ROOF DEMO PLAN-SECTOR B
SCALE:	1/16 = 1'-0"

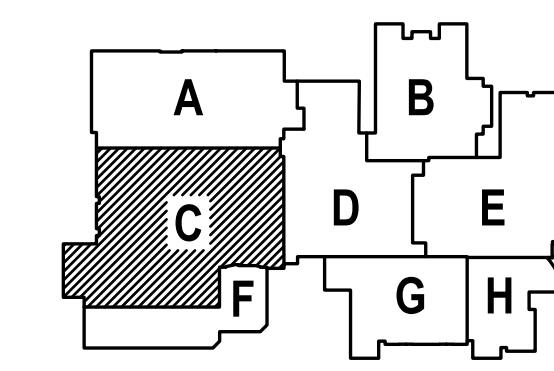
SHEET NO:	DM-2.2
OF	7



1 HVAC ROOF DEMO PLAN-SECTOR C
 DM-2.3 SCALE: 1/16"=1'-0"

- KEYED NOTES:
- ① - SALVAGE AUTOMATED LOGIC CONTROLLER FOR RE-USE IN NEW UNIT.
 - ② - REMOVE AND REINSTALL MECHANICAL EQUIPMENT FOR ROOF REPLACEMENT; SEE ARCHITECTURAL FOR FLASHING.
 - ③

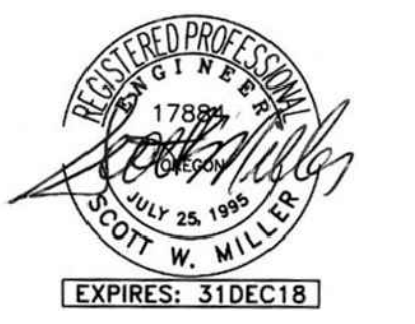
△
 SHEET IS REVISED PER ADDENDUM #2.



A NEW REMODEL PROJECT FOR:

SHERWOOD HIGH SCHOOL

16956 SW MEINCKE ROAD
 SHERWOOD, OR



DRAWN BY:	EVK
CHECKED BY:	SWM
DATE:	1-30-18
TITLE:	HVAC ROOF DEMO PLAN- SECTOR C
SCALE:	1/16" = 1'-0"

SHEET NO:	DM-2.3
OF	7



615 SE JACKSON STREET
 PORTLAND, OR 97214
 503.234.0518
 503.234.0677
 paul@paulbentleyarchitect.com

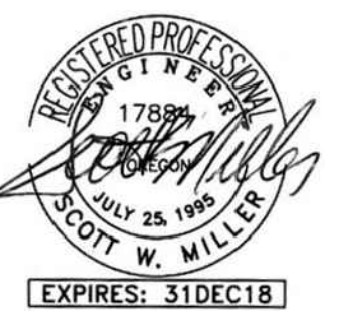
PAUL L BENTLEY Architect A.I.A. P.C.

1 - ADD #2 2/22/2018
 3 - PHASE#2 6.12.18

CONSTRUCTION SET 6.10.18

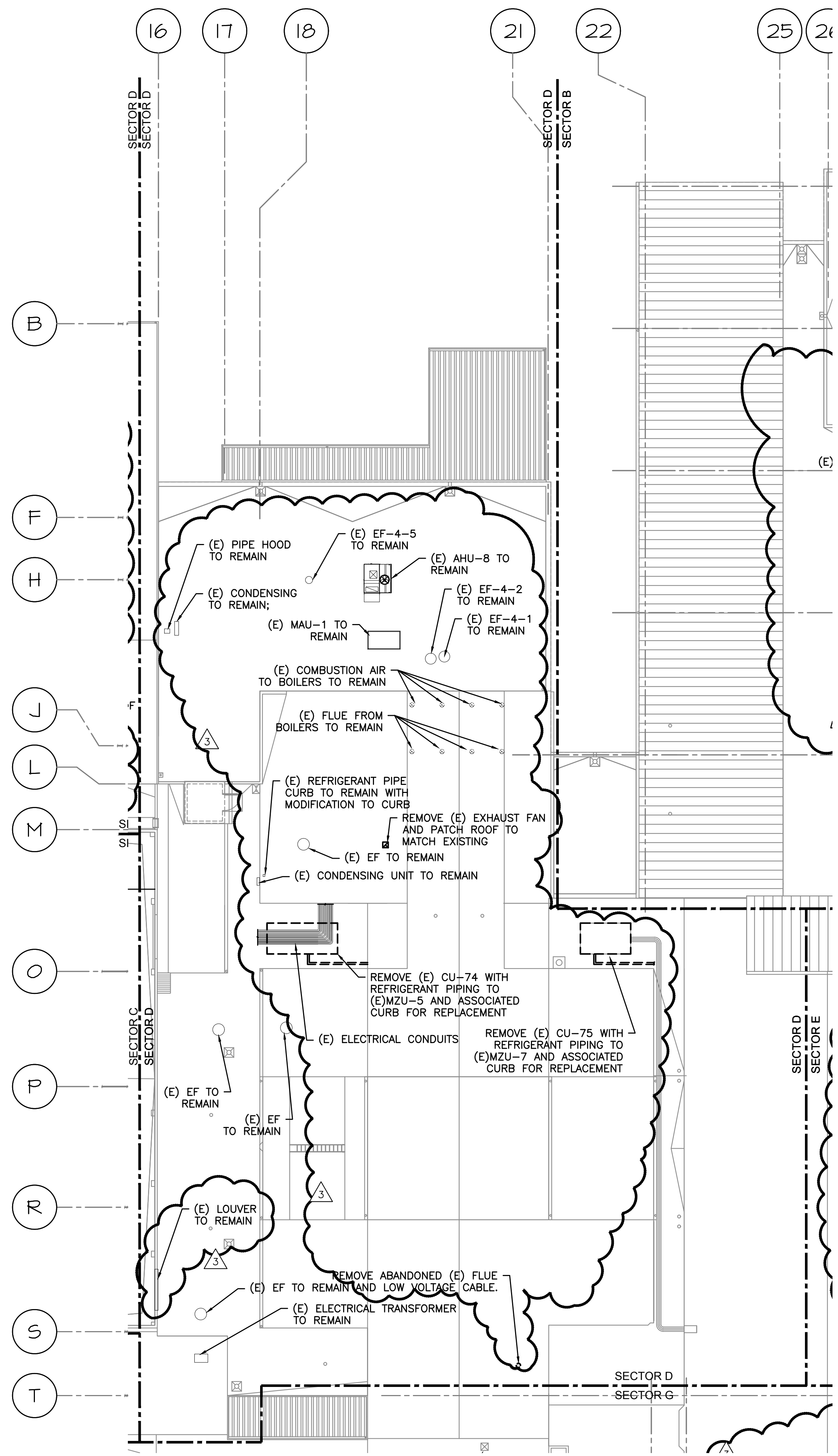
M Consulting Engineers
E 2007 S.E. Ash St.
I Portland, OR 97214
A PHN: (503) 234-0518
 INC. WWW.MEIA-ENG.COM
 CONTACT: Elena von Kamens

A NEW REMODEL PROJECT FOR:
SHERWOOD HIGH SCHOOL
 16956 SW MEINCKE ROAD
 SHERWOOD, OR

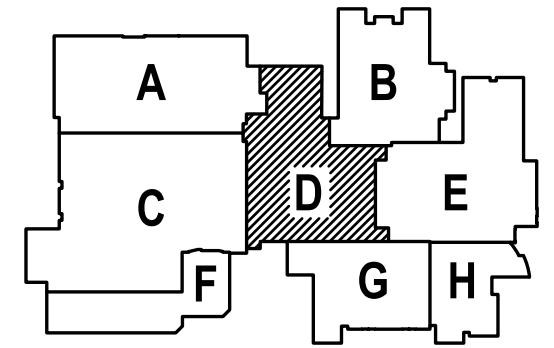


DRAWN BY: EVK
 CHECKED BY: SWM
 DATE: 1-30-18
 TITLE: HVAC ROOF DEMO PLAN-SECTOR D
 SCALE: 1/16" = 1'-0"

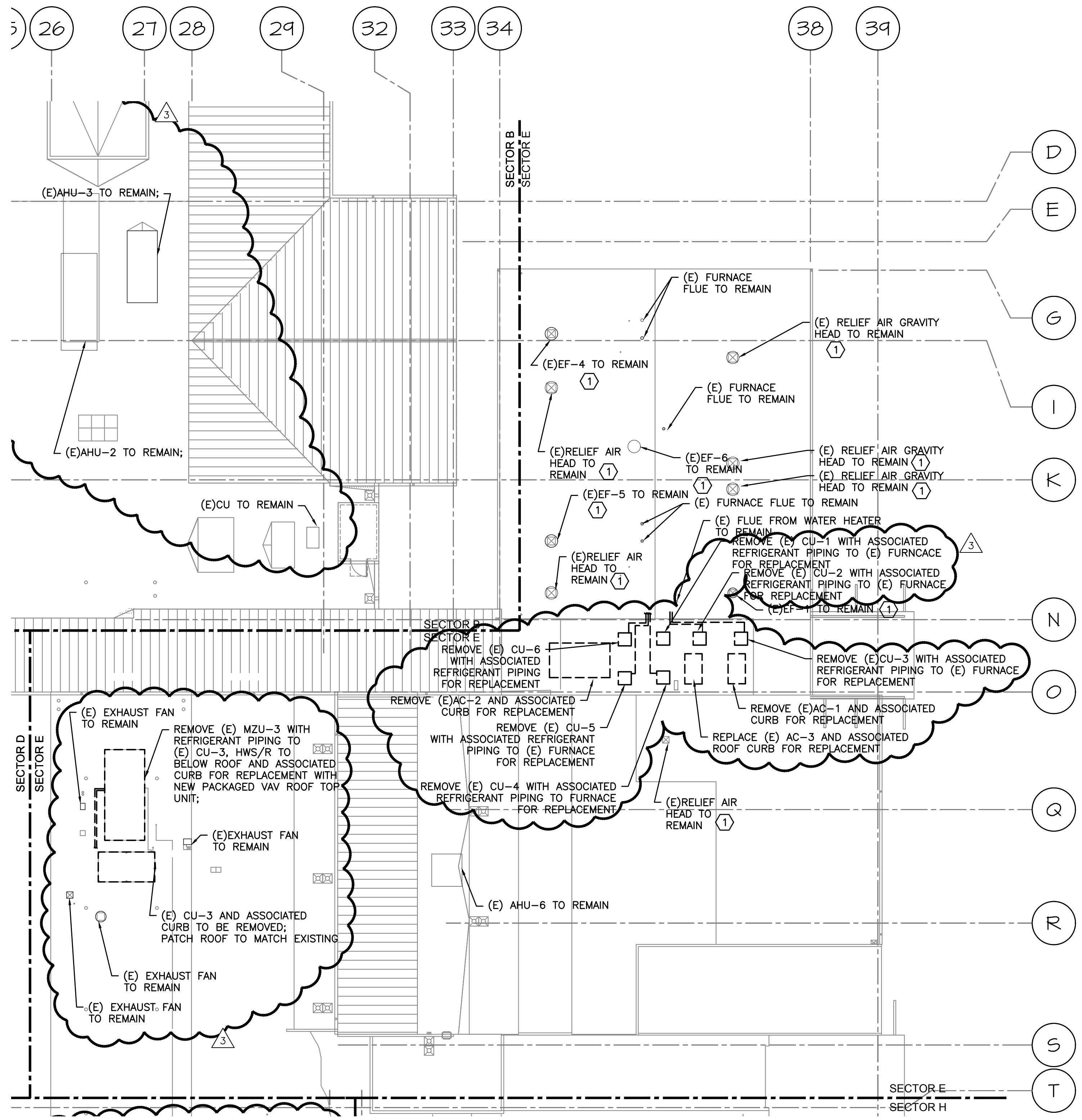
SHEET NO:
DM-2.4
 OF 7



△ SHEET IS REVISED PER ADDENDUM #2.



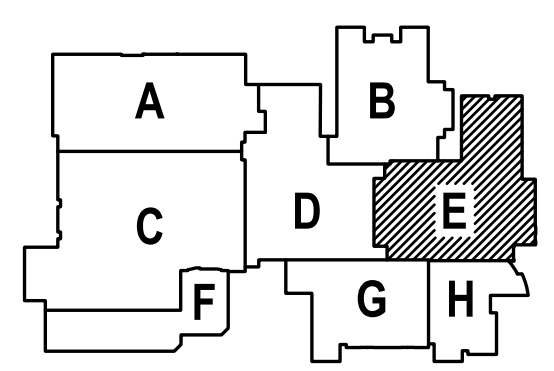
1 HVAC ROOF DEMO PLAN-SECTOR D
 DM2.4 SCALE: 1/16"=1'-0"



1 HVAC ROOF DEMO PLAN-SECTOR E
 DM-2.5 SCALE: 1/16" = 1'-0"

KEYED NOTES:
 ① - REMOVE AND REINSTALL MECHANICAL EQUIPMENT FOR ROOF REPLACEMENT; SEE ARCHITECTURAL FOR FLASHING.

△ SHEET IS REVISED PER ADDENDUM #2.



1 -ADD #2 2/22/2018
 3 -PHASE#2 6.12.18

CONSTRUCTION SET 6.10.18

MEDIA Consulting Engineers
 2007 S.E. Ash St.
 Portland, OR 97214
 PHN: (503) 234-0548
 FAX: (503) 234-0577
 INC. WWW.MFIA-ENG.COM
 CONTACT: Elena von Kaments

A NEW REMODEL PROJECT FOR:

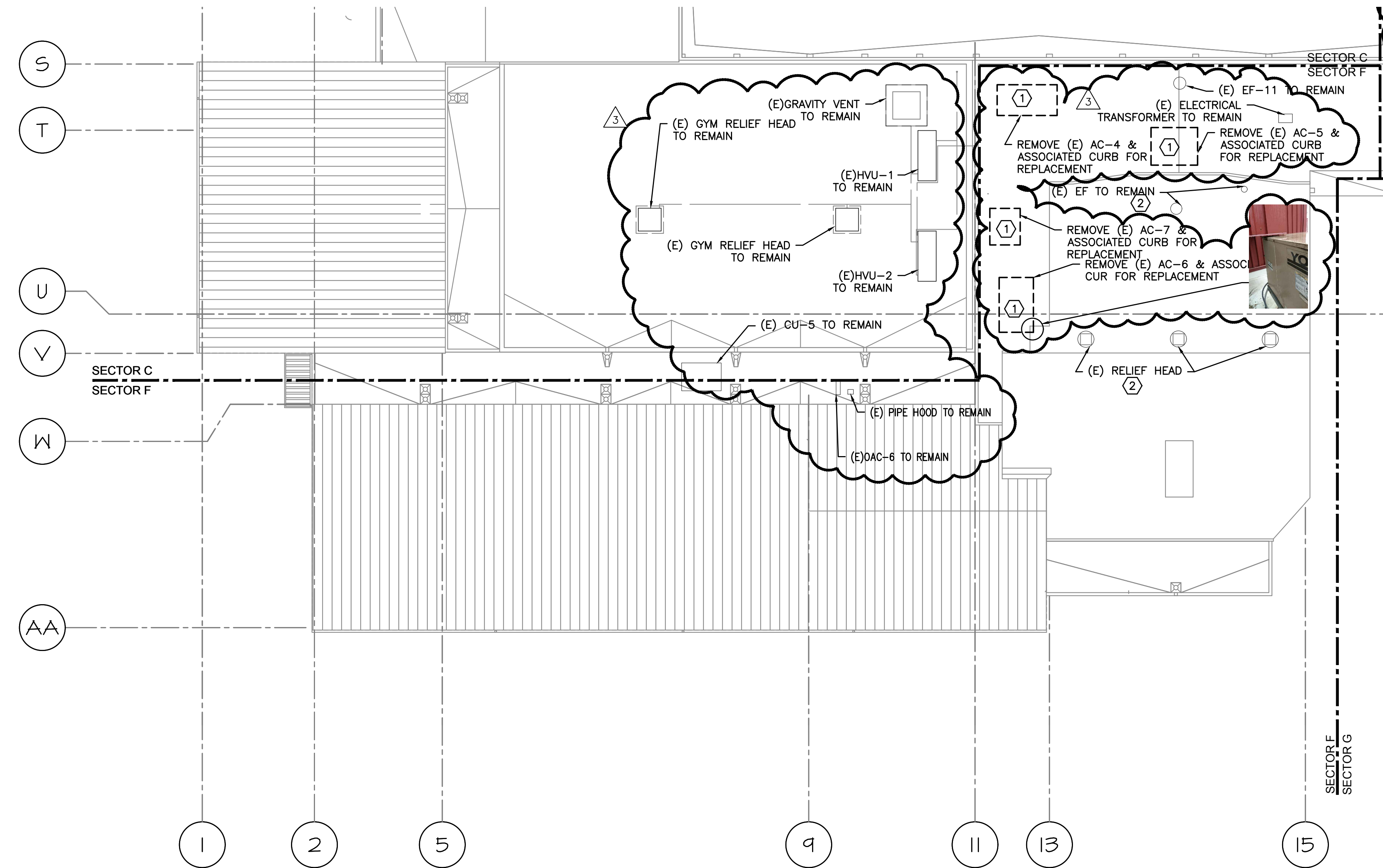
SHERWOOD HIGH SCHOOL

16956 SW MEINCKE ROAD SHERWOOD, OR

REGISTERED PROFESSIONAL
 ARCHITECT
 17827
 SCOTT W. MILLER
 July 25 1989
 EXPIRES: 31DEC18

DRAWN BY:	EVK
CHECKED BY:	SWM
DATE:	1-30-18
TITLE:	HVAC ROOF DEMO PLAN - SECTOR E
SCALE:	1/16" = 1'-0"

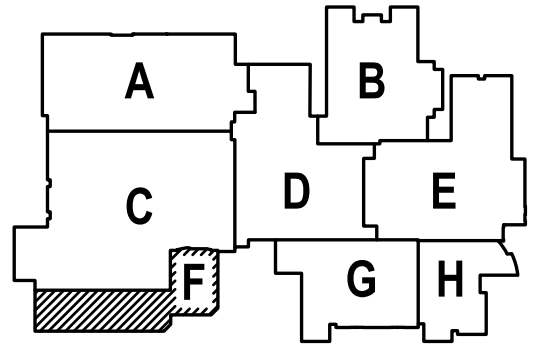
SHEET NO:	DM-2.5
OF	7



1 HVAC ROOF DEMO PLAN-SECTOR F
 DM2.6 SCALE: 1/16" = 1'-0"

- KEYED NOTES:
- ① - SALVAGE AUTOMATED LOGIC CONTROLLER FOR RE-USE IN NEW UNIT.
 - ② - REMOVE AND REINSTALL MECHANICAL EQUIPMENT FOR ROOF REPLACEMENT; SEE ARCHITECTURAL FOR FLASHING.

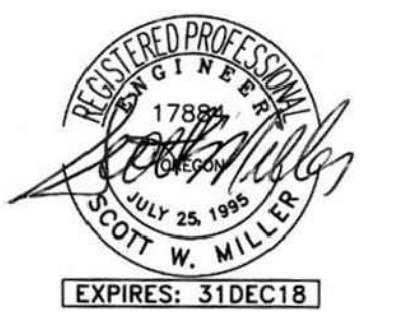
△
 SHEET IS REVISED PER ADDENDUM #2.



A NEW REMODEL PROJECT FOR:

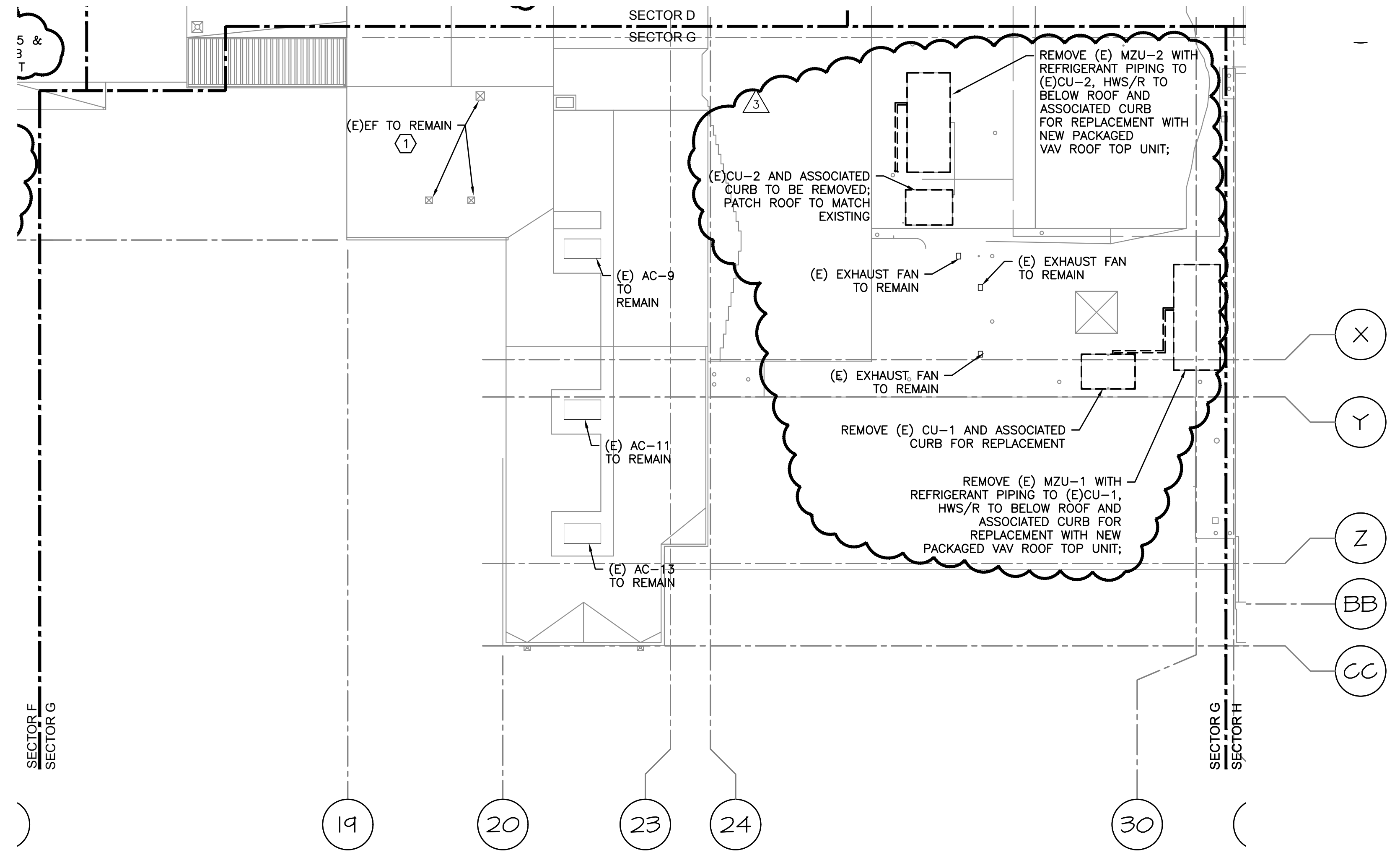
SHERWOOD HIGH SCHOOL

16956 SW MEINECKE ROAD
 SHERWOOD, OR



DRAWN BY:	EVK
CHECKED BY:	SWM
DATE:	1-30-18
TITLE:	HVAC ROOF DEMO PLAN - SECTOR F
SCALE:	1/16" = 1'-0"

SHEET NO:	DM-2.6
OF	7



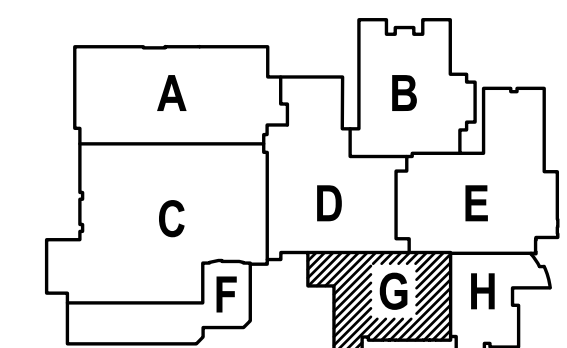
1 HVAC ROOF DEMO PLAN-SECTOR G
 DM2.7 SCALE: 1/16"=1'-0"

KEYED NOTES:

- (1) - REMOVE AND REINSTALL MECHANICAL EQUIPMENT FOR ROOF REPLACEMENT; SEE ARCHITECTURAL FOR FLASHING.



SHEET IS REVISED PER ADDENDUM #2.



615 SE JACOBSON STREET
 PORTLAND, OR 97214
 503.223.8273 OFFICE
 503.223.7560 FAX
 P.L.B@PAULBENTLEYARCHITECT.COM

PAUL L BENTLEY Architect A.I.A. P.C.

- 1 - ADD #2 2/22/2018
- 3 - PHASE #2 6.12.18

CONSTRUCTION SET 6.10.18

MFI Consulting Engineers
 2007 S.E. Ash St.
 Portland, OR 97214
 PHN: (503) 234-0548
 FAX: (503) 234-0677
 WWW.MFI-ENG.COM
 CONTACT: Elena von Kamens

A NEW REMODEL PROJECT FOR:

SHERWOOD HIGH SCHOOL

16956 SW MEINCKE ROAD SHERWOOD, OR



DRAWN BY:	EVK
CHECKED BY:	SWM
DATE:	1-30-18
TITLE:	ROOF HVAC DEMO PLAN- SECTOR G
SCALE:	1/16" = 1'-0"

SHEET NO:	DM-2.7
OF	7