



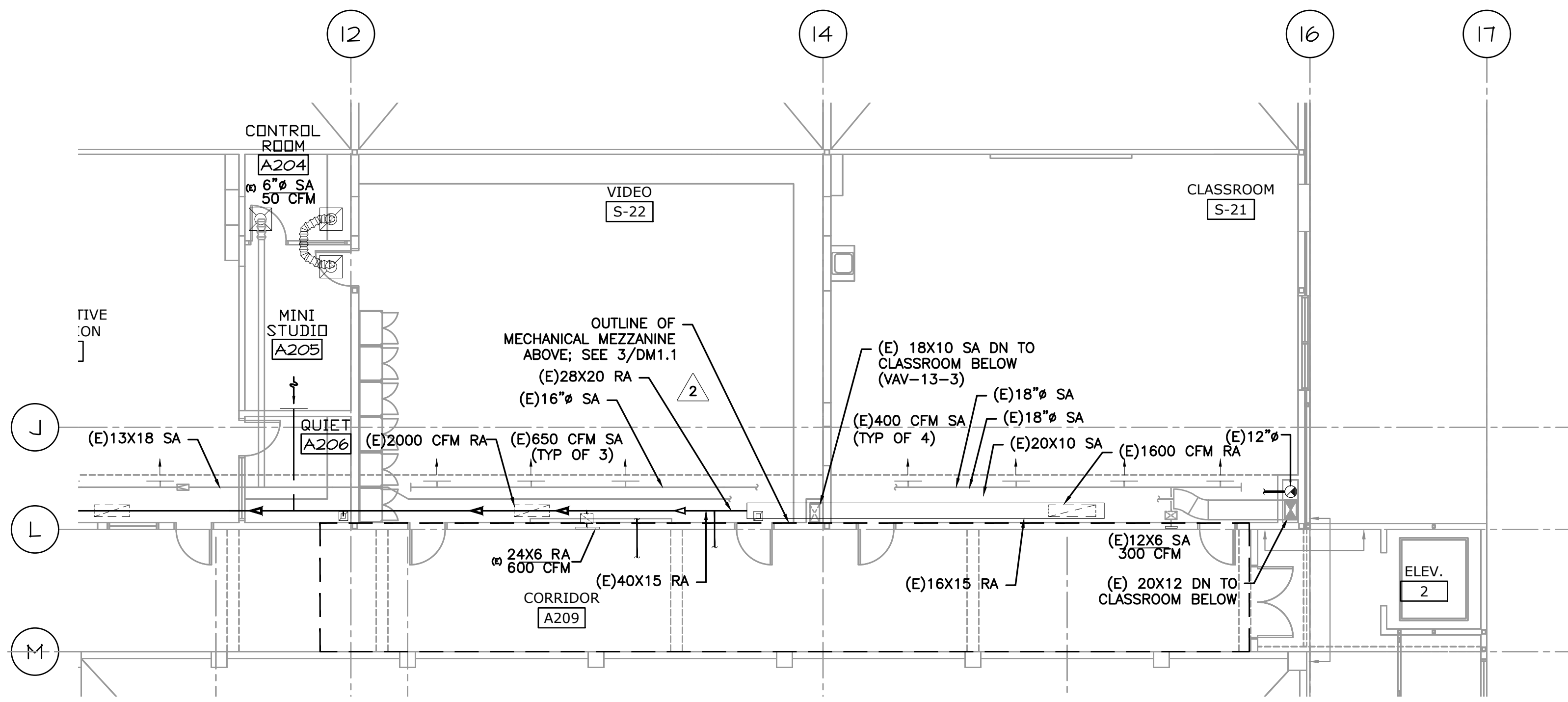
615 SE JACKSON STREET  
 PORTLAND, OR 97214  
 503.231.0273 OFFICE  
 503.231.7560 FAX  
 paul@paulbentleyarchitect.com

PAUL L BENTLEY Architect A.I.A. P.C.

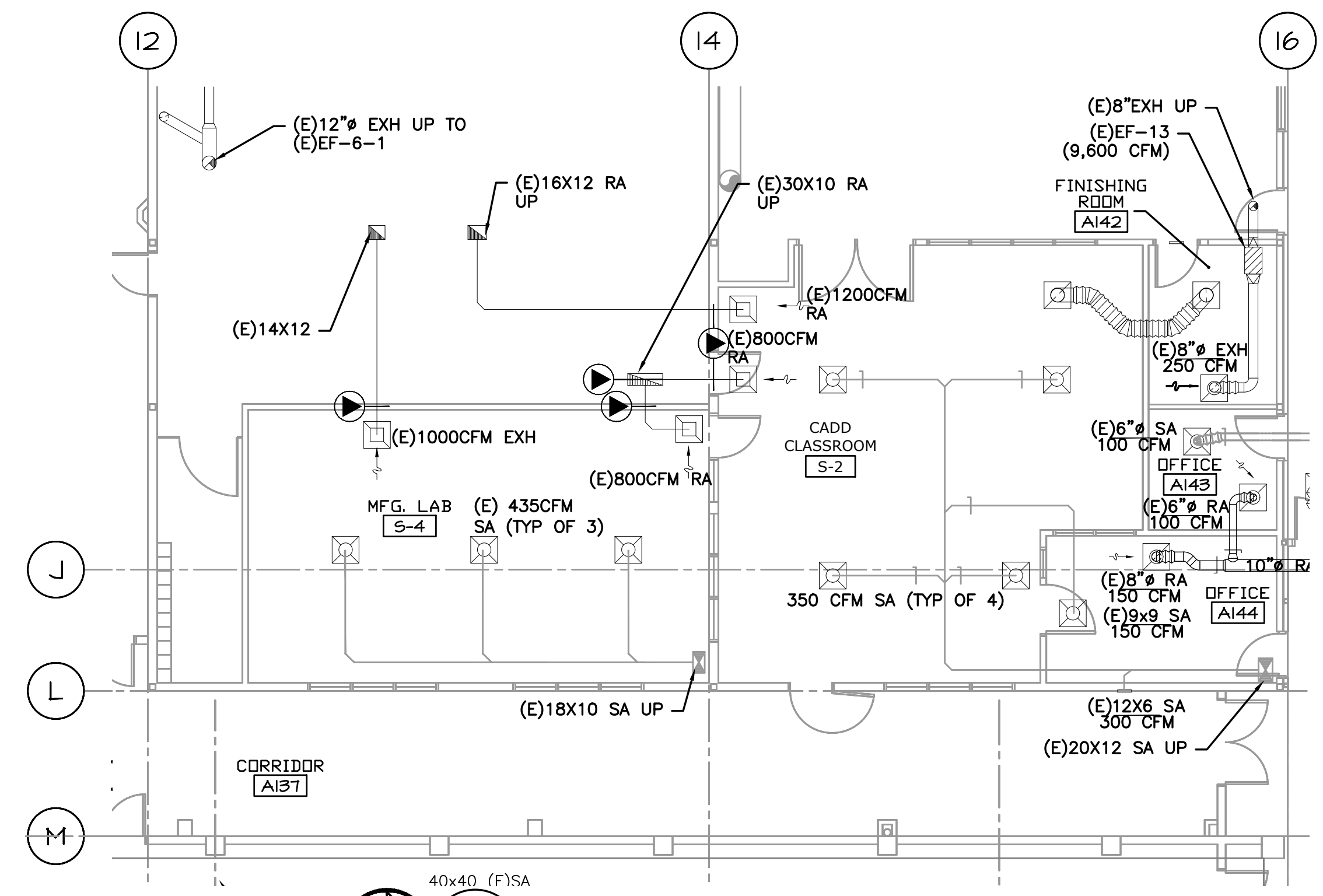
- 1 - ADD #2 2/22/2018
- 2 - ADD #3 3/2/2018
- 3 - PHASE #2 6.12.18

CONSTRUCTION SET 6.10.18

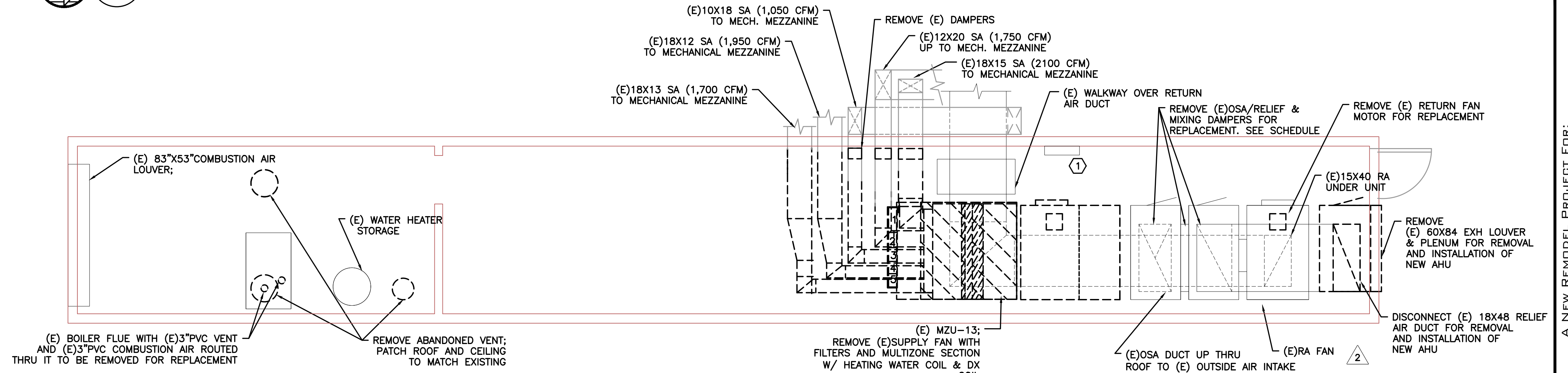
M Consulting Engineers  
 2007 S.E. Ash St.  
 Portland, OR 97214  
 PHN: (503) 231-0518  
 FAX: (503) 231-0677  
 WWW.MPEH-ENG.COM  
 CONTACT: Elena von Kamerns



2 PARTIAL HVAC DEMO PLAN - SECOND FLOOR  
 DM1.1 SCALE: 1/8"=1'-0"



1 PARTIAL HVAC DEMO PLAN - FIRST FLOOR  
 DM1.1 SCALE: 1/8"=1'-0"



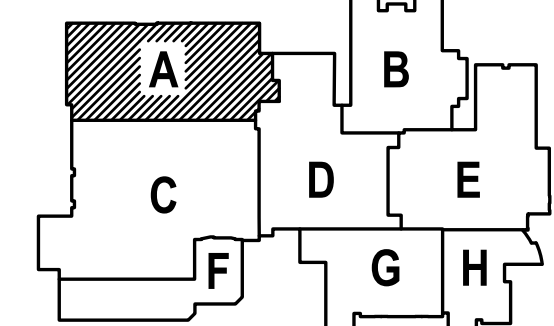
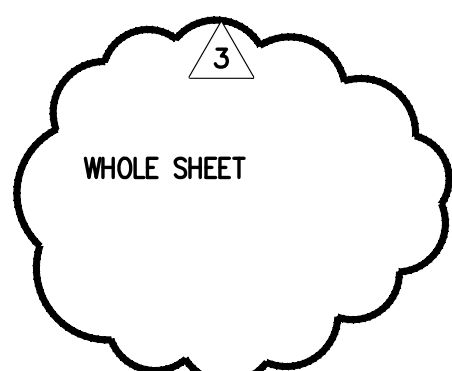
3 HVAC DEMO MEZZ. PLAN  
 DM1.1 SCALE: 1/4"=1'-0"

GENERAL SHEET NOTES:

1. CONTRACTOR TO VERIFY LOCATION AND SIZES OF EXISTING DUCTWORK, PIPING, EQUIPMENT, CONTROLS, ETC. PRIOR TO COMMENCING WORK. IF SHOWN LOCATION OR SIZE DIFFER FROM PLANS, LOCATE THE CORRECT SIZE ON SITE AND ADJUST CONNECTION ACCORDINGLY. PROVIDE NEW DUCT, PIPING, EQUIPMENT, CONTROLS AND ETC. IF ONE IS NOT PRESENT.
2. CONTRACTOR TO KEEP RECORD OF NEW SYSTEM, CONTROLS, PIPING, DUCTWORK INSTALLED AS WELL AS EXISTING TO REMAIN, AND ITEMS DISCOVERED OR ENCOUNTERED ON SITE THAT WERE NOT SHOWN ON THE PLANS. THESE INCLUDE SYSTEMS, DUCTWORK, PIPE, ETC THAT DO NOT AFFECT OR ARE NOT PART OF THE PROJECT SCOPE, BUT ARE WITHIN THE BOUNDARIES OF THE PROJECT SCOPE. CONTRACTOR IS RESPONSIBLE FOR PROVIDING AS-BUILT DRAWINGS THAT ACCURATELY REFLECT THE CONDITIONS WITHIN THE BOUNDARY OF THE PROJECT SCOPE AT THE END OF THE PROJECT.
3. PIPING AND DUCTWORK LOCATIONS SHOWN ON THE PLAN ARE APPROXIMATE. CONTRACTOR TO VERIFY EXACT LOCATION PRIOR TO COMMENCING WORK.
4. SEE M6.1-M6.7 FOR MECHANICAL LEGEND, SCHEDULES AND DETAILS.

KEYED NOTES:

- 1 - EXISTING AUTOMATED LOGIC CONTROLS TO BE RE-USED. INSTALL IN SPECIFICATION APPROVED ENCLOSURE. ALL WIRE & DEVICES TO BE INSTALLED & LABELED PER SPECS. PROVIDE CONTROLLER EXPANSION DEVICES OR NEW CONTROLLER AS REQUIRED. SEE M6.7 FOR CONTROLS.



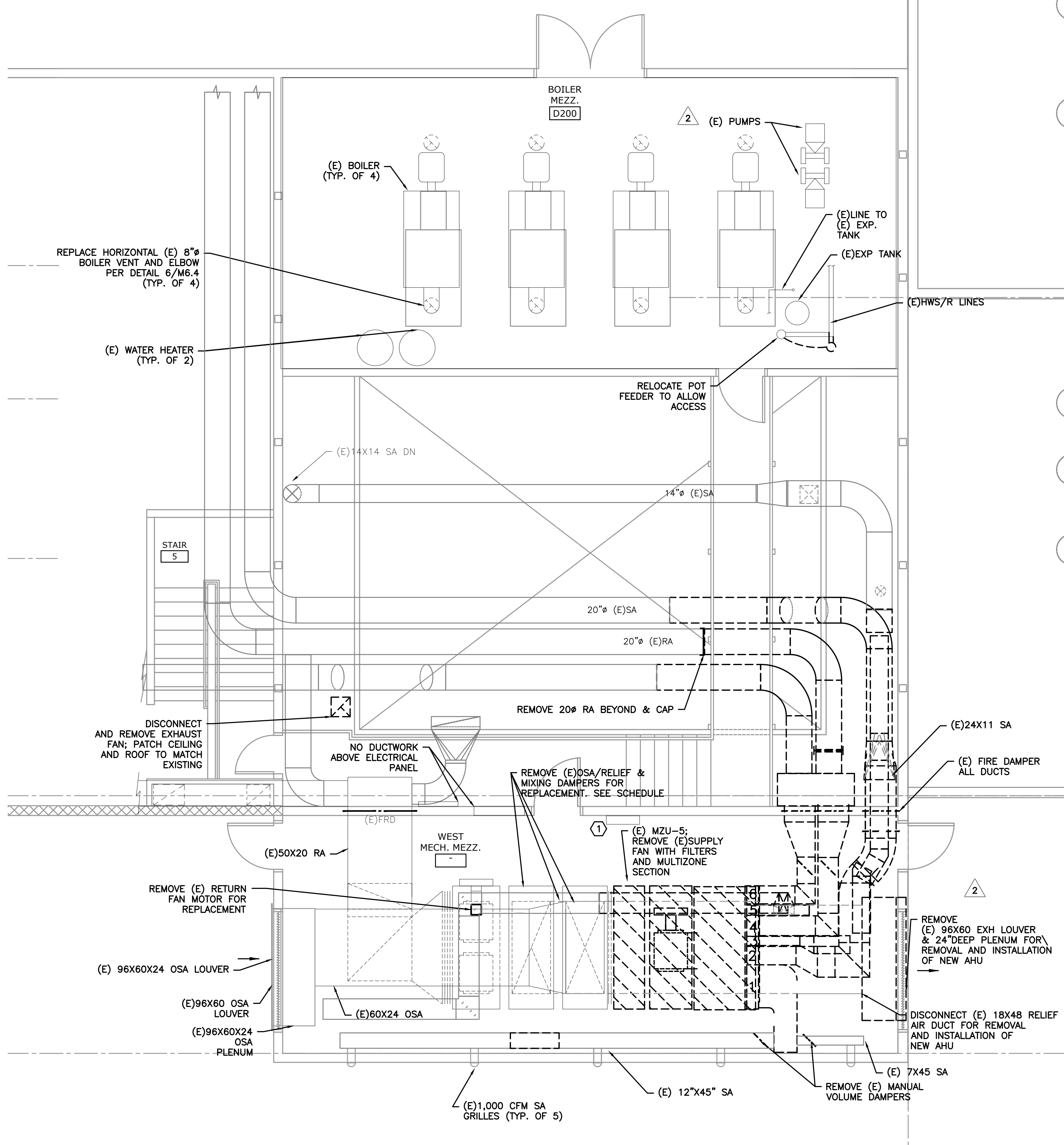
A NEW REMODEL PROJECT FOR:  
**SHERWOOD HIGH SCHOOL**  
 16956 SW MEINCKE ROAD  
 SHERWOOD, OR



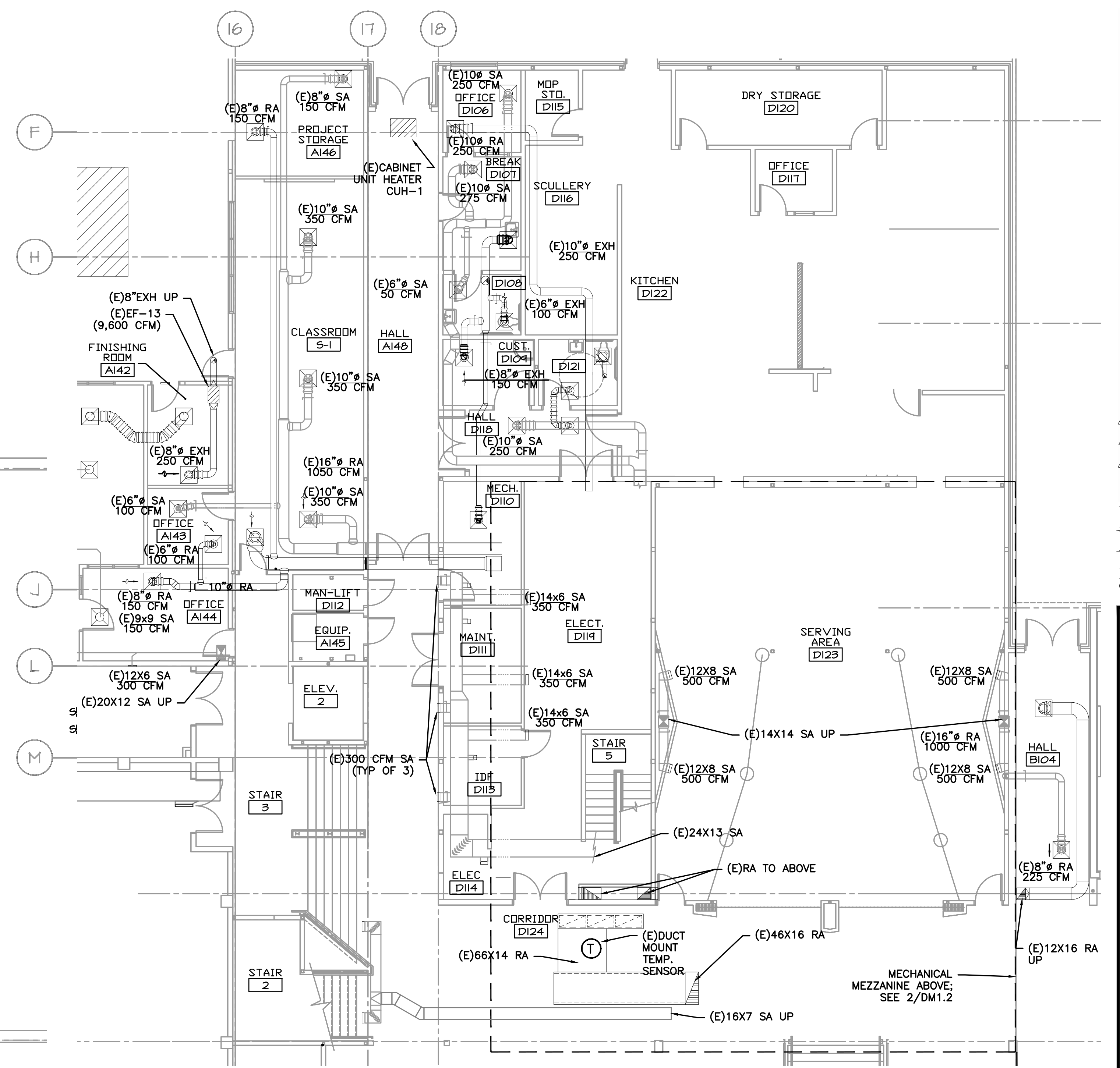
DRAWN BY:	EVK
CHECKED BY:	SWM
DATE:	1-30-18
TITLE:	PARTIAL HVAC DEMO PLANS
SCALE:	1/8" = 1'-0"

SHEET NO:	DM-1.1
	1 OF 8

1  
 SHEET IS REVISED PER ADDENDUM #2.



**2 HVAC DEMO MEZZ PLAN**  
 DM1.2 SCALE: 1/4"=1'-0"

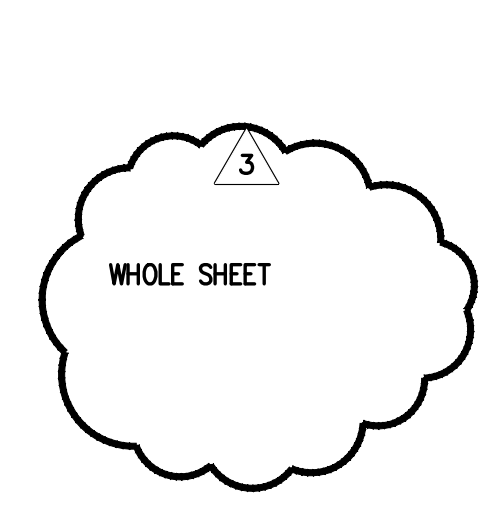


**1 PARTIAL HVAC DEMO PLAN**  
 DM1.2 SCALE: 1/8"=1'-0"

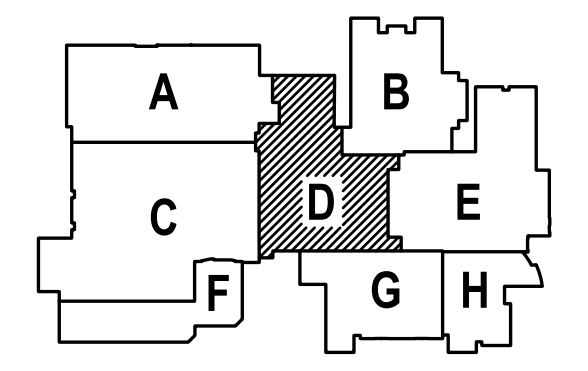
**KEYED NOTES:**  
 ① - EXISTING AUTOMATED LOGIC CONTROLS TO BE RE-USED. INSTALL IN SPECIFICATION APPROVED ENCLOSURE. ALL WIRE & DEVICES TO BE INSTALLED & LABELED PER SPECS. PROVIDE CONTROLLER EXPANSION DEVICES OR NEW CONTROLLER AS REQUIRED. SEE FOR CONTROLS.


**GENERAL SHEET NOTES:**

- CONTRACTOR TO VERIFY LOCATION AND SIZES OF EXISTING DUCTWORK, PIPING, EQUIPMENT, CONTROLS, ETC. PRIOR TO COMMENCING WORK. IF SHOWN LOCATION OR SIZE DIFFER FROM PLANS, LOCATE THE CORRECT SIZE ON SITE AND ADJUST CONNECTION ACCORDINGLY. PROVIDE NEW DUCT, PIPING, EQUIPMENT, CONTROLS AND ETC. IF ONE IS NOT PRESENT.
- CONTRACTOR TO KEEP RECORD OF NEW SYSTEM, CONTROLS, PIPING, DUCTWORK, INSTALLED AS WELL AS EXISTING TO REMAIN, AND ITEMS DISCOVERED OR ENCOUNTERED ON SITE THAT WERE NOT SHOWN ON THE PLANS. THESE INCLUDE SYSTEMS, DUCTWORK, PIPE, ETC THAT DO NOT AFFECT OR ARE NOT PART OF THE PROJECT SCOPE, BUT ARE WITHIN THE BOUNDARIES OF THE PROJECT SCOPE. CONTRACTOR IS RESPONSIBLE FOR PROVIDING AS-BUILT DRAWINGS THAT ACCURATELY REFLECT THE CONDITIONS WITHIN THE BOUNDARY OF THE PROJECT SCOPE AT THE END OF THE PROJECT.
- PIPING AND DUCTWORK LOCATIONS SHOWN ON THE PLAN ARE APPROXIMATE. CONTRACTOR TO VERIFY EXACT LOCATION PRIOR TO COMMENCING WORK.
- SEE M6.1-M6.7 FOR MECHANICAL LEGEND, SCHEDULES AND DETAILS.



③ SHEET IS REVISED PER ADDENDUM #2.






615 SE JACOBSON STREET  
 PORTLAND, OR 97214  
 PH: (503) 234-0548  
 FAX: (503) 234-0677  
 WWW.MFLA-ENG.COM  
 CONTACT: Elena von Kaments

**PAUL L BENTLEY Architect A.I.A. P.C.**

16956 SW MEINCKE ROAD  
 SHERWOOD, OR

A NEW REMODEL PROJECT FOR:  
**SHERWOOD HIGH SCHOOL**

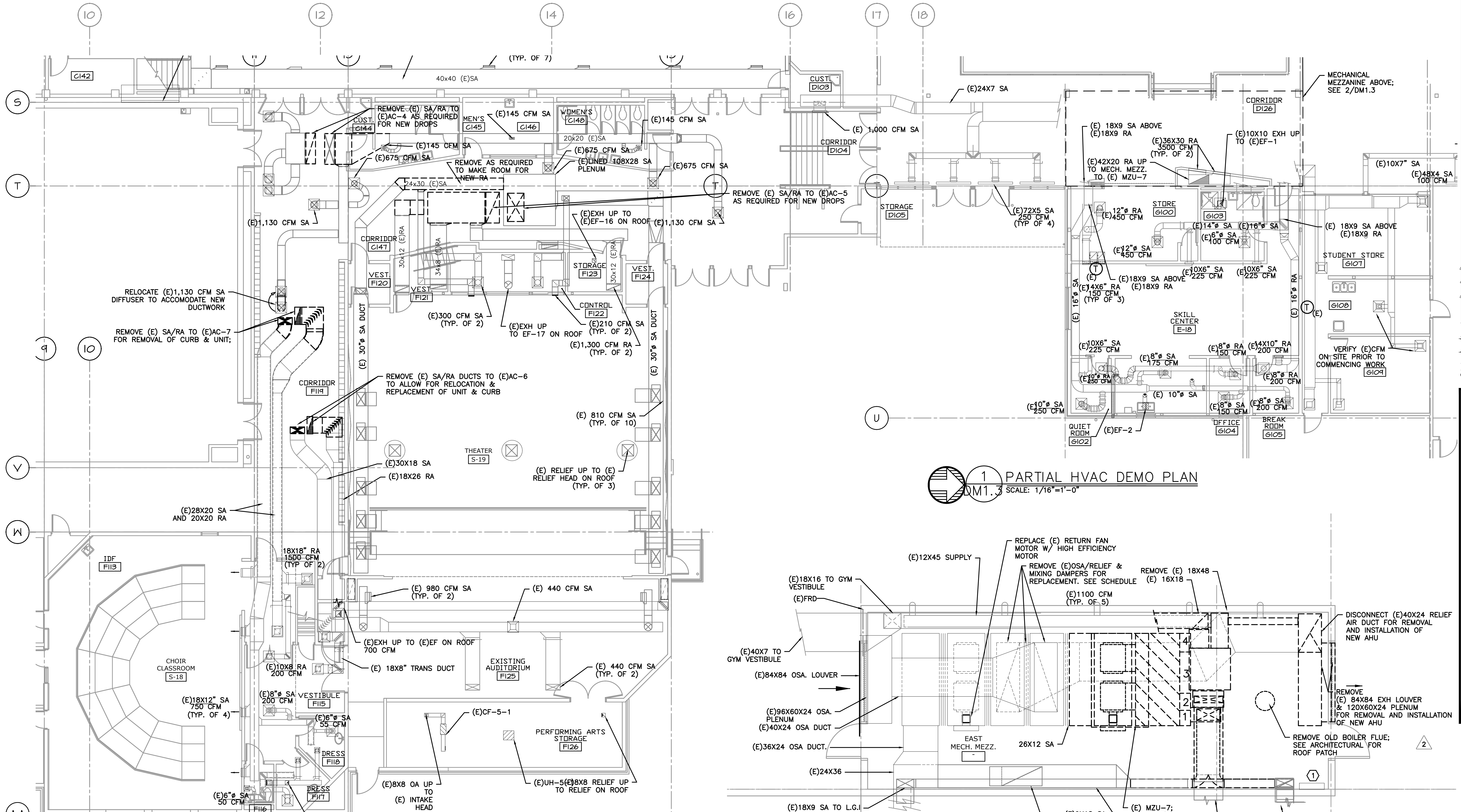


DRAWN BY:	EVK
CHECKED BY:	SWM
DATE:	1-30-18
TITLE:	PARTIAL HVAC DEMO PLANS
SCALE:	1/8" = 1'-0"
SHEET NO:	DM-1.2
	2 OF 8

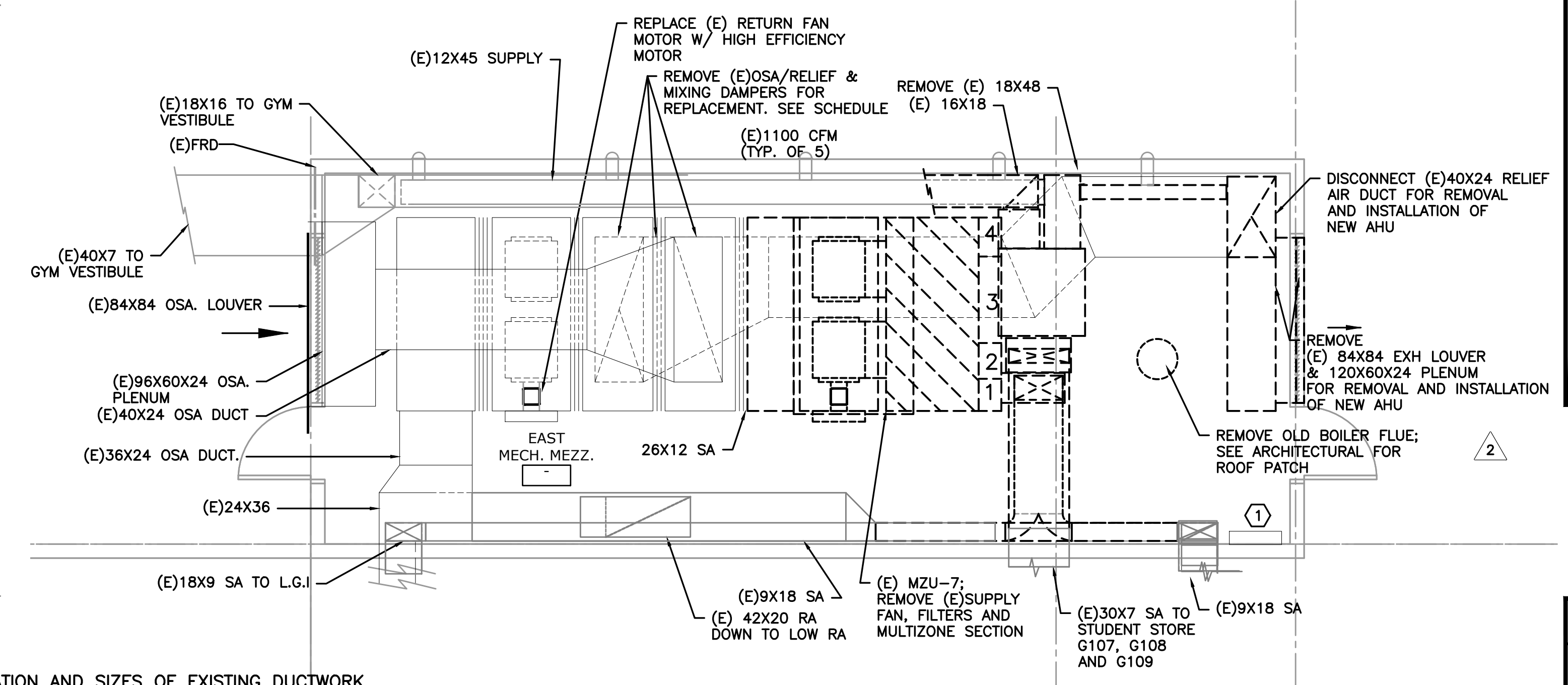


615 SE JACKSON STREET  
PORTLAND, OR 97214  
503.472.8273 OFFICE  
503.472.7560 FAX  
PAUL@PAULBENTLEYARCHITECT.COM

PAUL L BENTLEY Architect A.I.A. P.C.



1 PARTIAL HVAC DEMO PLAN  
DM1.3 SCALE: 1/16"=1'-0"



2 HVAC DEMO MEZZ. PLAN  
DM1.3 SCALE: 1/4"=1'-0"

**GENERAL SHEET NOTES:**

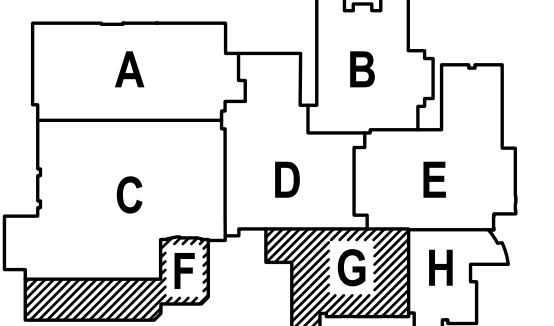
1. CONTRACTOR TO VERIFY LOCATION AND SIZES OF EXISTING DUCTWORK, PIPING, EQUIPMENT, CONTROLS, ETC. PRIOR TO COMMENCING WORK. IF SHOWN LOCATION OR SIZE DIFFER FROM PLANS, LOCATE THE CORRECT SIZE ON SITE AND ADJUST CONNECTION ACCORDINGLY. PROVIDE NEW DUCT, PIPING, EQUIPMENT, CONTROLS AND ETC. IF ONE IS NOT PRESENT.
2. CONTRACTOR TO KEEP RECORD OF NEW SYSTEM, CONTROLS, PIPING, DUCTWORK INSTALLED AS WELL AS EXISTING TO REMAIN, AND ITEMS DISCOVERED OR ENCOUNTERED ON SITE THAT WERE NOT SHOWN ON THE PLANS. THESE INCLUDE SYSTEMS, DUCTWORK, PIPE, ETC THAT DO NOT AFFECT OR ARE NOT PART OF THE PROJECT SCOPE, BUT ARE WITHIN THE BOUNDARIES OF THE PROJECT SCOPE. CONTRACTOR IS RESPONSIBLE FOR PROVIDING AS-BUILT DRAWINGS THAT ACCURATELY REFLECT THE CONDITIONS WITHIN THE BOUNDARY OF THE PROJECT SCOPE AT THE END OF THE PROJECT.
3. PIPING AND DUCTWORK LOCATIONS SHOWN ON THE PLAN ARE APPROXIMATE. CONTRACTOR TO VERIFY EXACT LOCATION PRIOR TO COMMENCING WORK.
4. SEE M6.1-M6.7 FOR MECHANICAL LEGEND, SCHEDULES AND DETAILS.

**KEYED NOTES:**

- 1 - EXISTING AUTOMATED LOGIC CONTROLS TO BE RE-USED. INSTALL IN SPECIFICATION APPROVED ENCLOSURE. ALL WIRE & DEVICES TO BE INSTALLED & LABELED PER SPECS. PROVIDE CONTROLLER EXPANSION DEVICES OR NEW CONTROLLER AS REQUIRED. SEE FOR CONTROLS.

WHOLE SHEET

SHEET IS REVISED PER ADDENDUM #2.



1 - ADD #2 2/22/2018  
2 - ADD #3 3/2/2018  
3 - PHASE #2 6.12.18

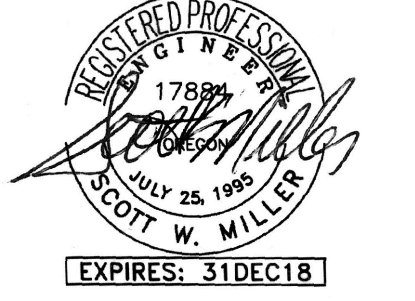
CONSTRUCTION SET 6.10.18

MEDIA CONSULTING ENGINEERS  
2007 S.E. Ash St.  
Portland, OR 97214  
PH: (503) 234-0518  
FAX: (503) 234-0677  
WWW.MEDIA-ENG.COM  
CONTACT: Elena von Kamens

A NEW REMODEL PROJECT FOR:

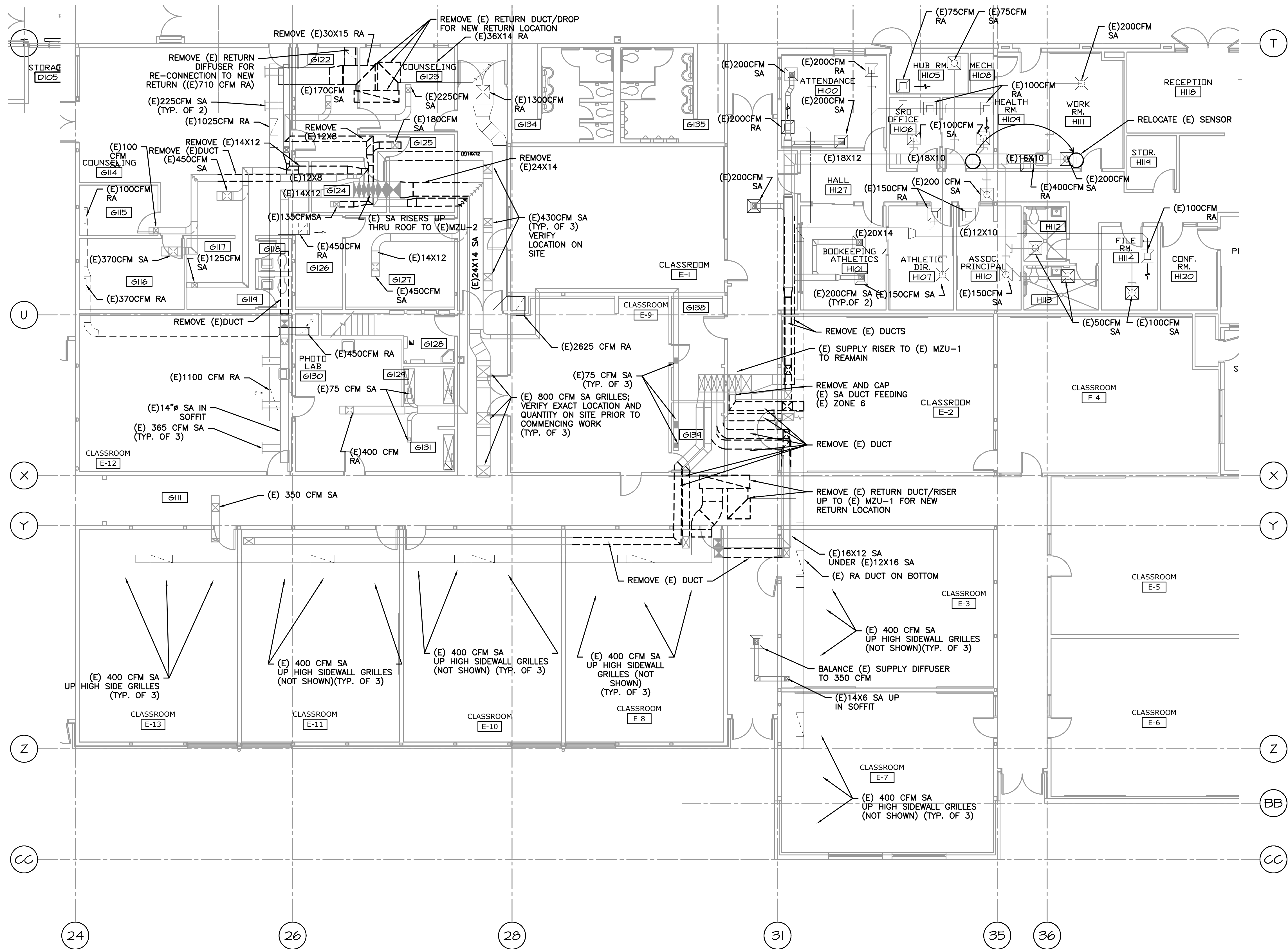
# SHERWOOD HIGH SCHOOL

16956 SW MEINECKE ROAD  
SHERWOOD, OR



DRAWN BY:	EVK
CHECKED BY:	SWM
DATE:	1-30-18
TITLE:	PARTIAL HVAC DEMO PLANS
SCALE:	1/8" = 1'-0"

SHEET NO:	DM-1.3
	3 OF 8

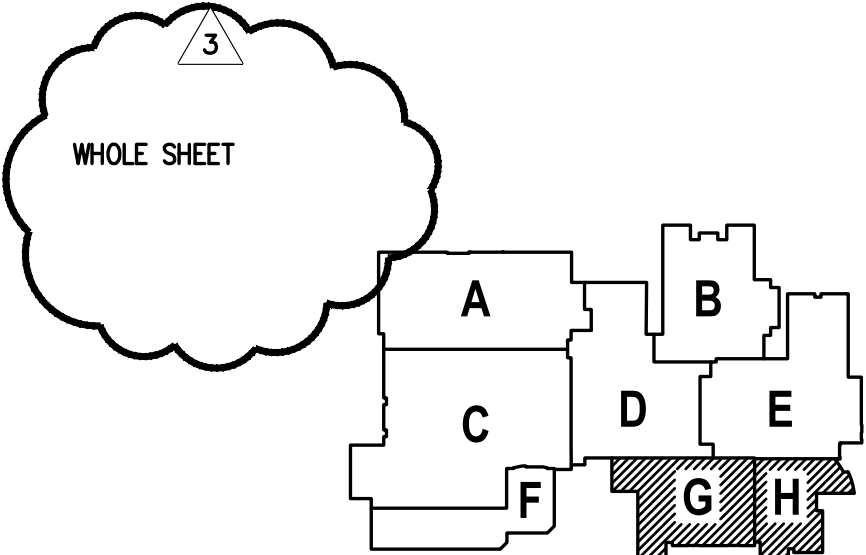


**GENERAL SHEET NOTES:**

1. CONTRACTOR TO VERIFY LOCATION AND SIZES OF EXISTING DUCTWORK, PIPING, EQUIPMENT, CONTROLS, ETC. PRIOR TO COMMENCING WORK. IF SHOWN LOCATION OR SIZE DIFFER FROM PLANS, LOCATE THE CORRECT SIZE ON SITE AND ADJUST CONNECTION ACCORDINGLY. PROVIDE NEW DUCT, PIPING, EQUIPMENT, CONTROLS AND ETC. IF ONE IS NOT PRESENT.
2. CONTRACTOR TO KEEP RECORD OF NEW SYSTEM, CONTROLS, PIPING, DUCTWORK INSTALLED AS WELL AS EXISTING TO REMAIN, AND ITEMS DISCOVERED OR ENCOUNTERED ON SITE THAT WERE NOT SHOWN ON THE PLANS. THESE INCLUDE SYSTEMS, DUCTWORK, PIPE, ETC THAT DO NOT AFFECT OR ARE NOT PART OF THE PROJECT SCOPE, BUT ARE WITHIN THE BOUNDARIES OF THE PROJECT SCOPE. CONTRACTOR IS RESPONSIBLE FOR PROVIDING AS-BUILT DRAWINGS THAT ACCURATELY REFLECT THE CONDITIONS WITHIN THE BOUNDARY OF THE PROJECT SCOPE AT THE END OF THE PROJECT.
3. PIPING AND DUCTWORK LOCATIONS SHOWN ON THE PLAN ARE APPROXIMATE. CONTRACTOR TO VERIFY EXACT LOCATION PRIOR TO COMMENCING WORK.
4. SEE M6.1-M6.7 FOR MECHANICAL LEGEND, SCHEDULES AND DETAILS.

**1 PARTIAL HVAC DEMO PLAN**  
 DM-1.4 SCALE: 1/8"=1'-0"

1  
 SHEET IS REVISED PER ADDENDUM #2.

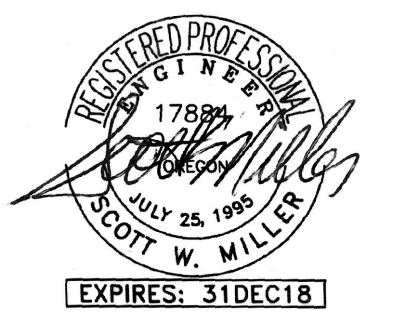


1 -ADD #2 2/22/2018  
 3 -PHASE#2 6.12.18  
 CONSTRUCTION SET 6.10.18  
**MFA** Consulting Engineers  
 2007 S.E. Ash St.  
 Portland, OR 97214  
 PH: (503) 234-0548  
 FAX: (503) 234-0677  
 WWW.MFA-ENG.COM  
 CONTACT: ELENA VON KAMENTS

A NEW REMODEL PROJECT FOR:

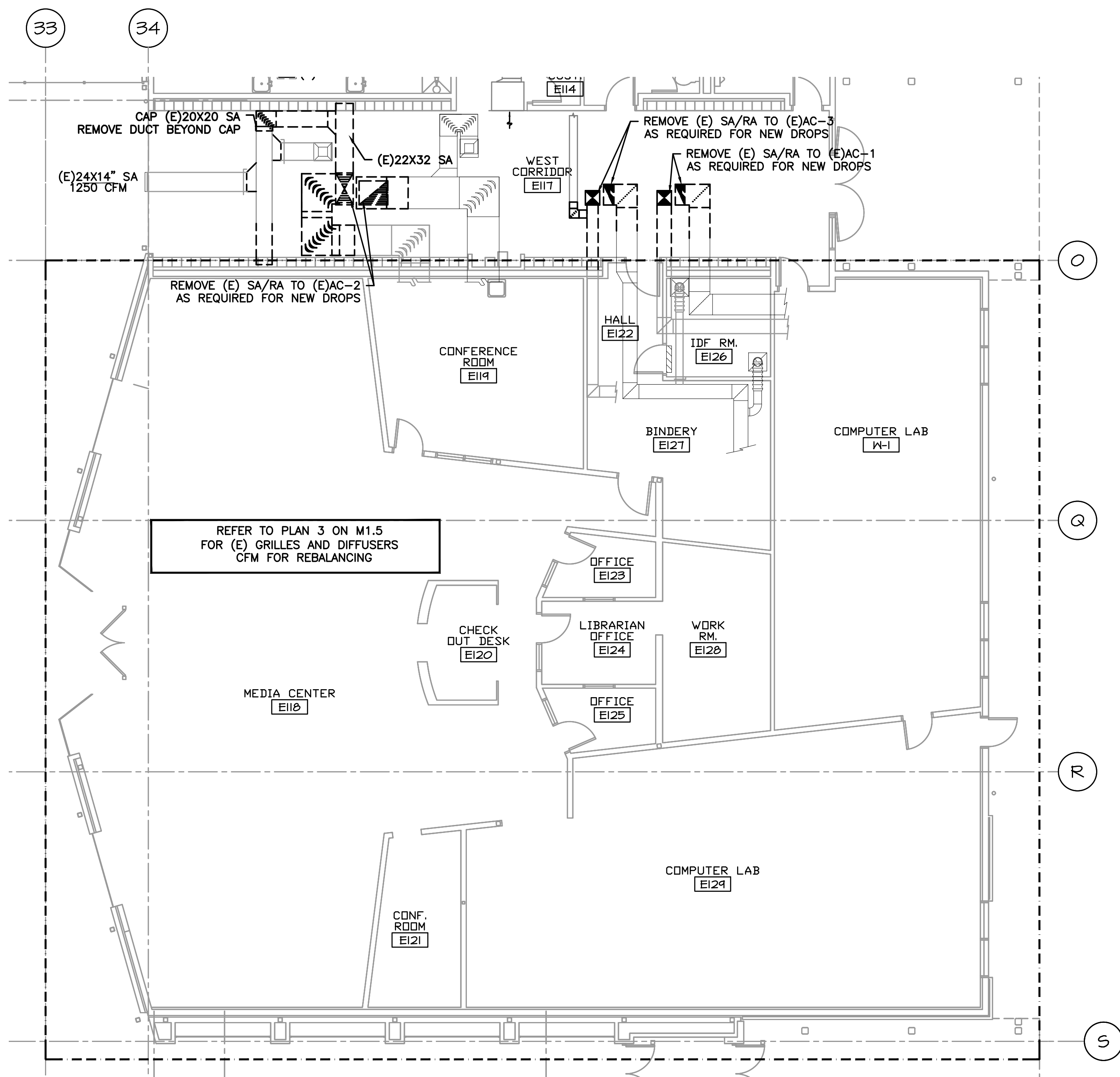
**SHERWOOD HIGH SCHOOL**

16956 SW MEINCKE ROAD  
 SHERWOOD, OR

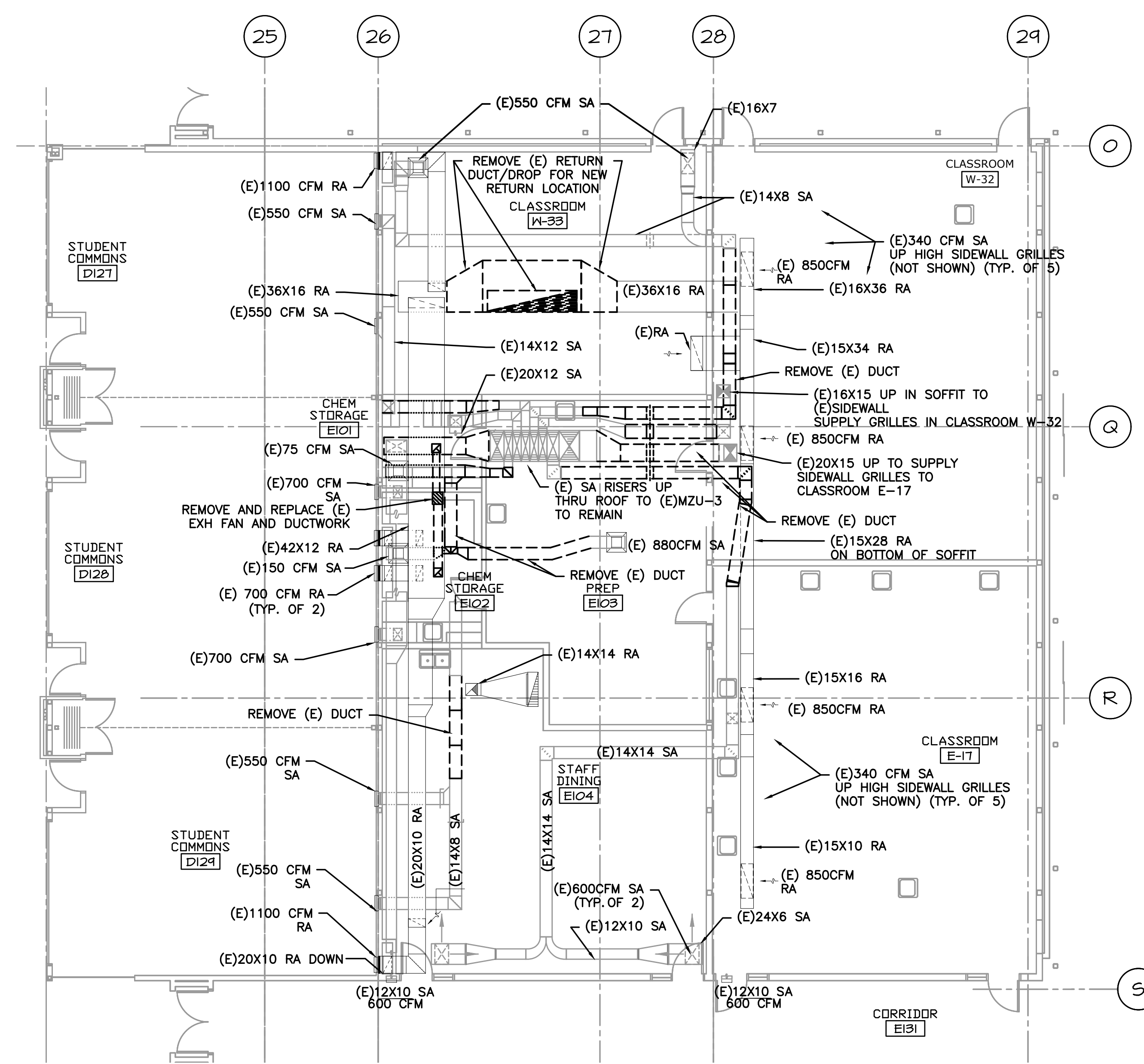


DRAWN BY:	EVK
CHECKED BY:	SWM
DATE:	1-30-18
TITLE:	PARTIAL HVAC DEMO PLAN
SCALE:	1/8" = 1'-0"

SHEET NO:	DM-1.4
	4 OF 8



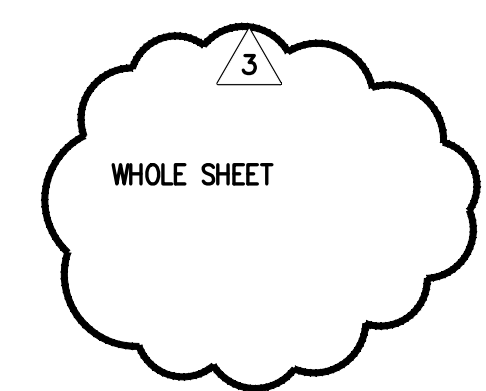
2 PARTIAL HVAC DEMO PLAN  
 DM1.5 SCALE: 1/8"=1'-0"



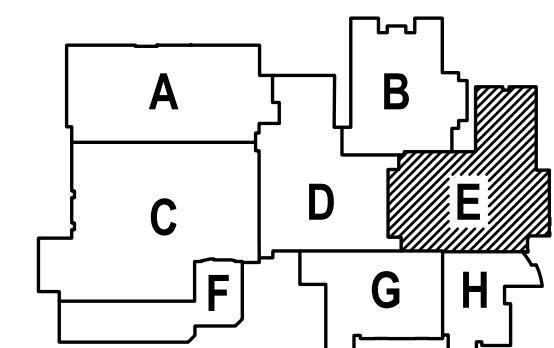
1 PARTIAL HVAC DEMO PLAN  
 DM1.5 SCALE: 1/8"=1'-0"

GENERAL SHEET NOTES:

1. CONTRACTOR TO VERIFY LOCATION AND SIZES OF EXISTING DUCTWORK, PIPING, EQUIPMENT, CONTROLS, ETC. PRIOR TO COMMENCING WORK. IF SHOWN LOCATION OR SIZE DIFFER FROM PLANS, LOCATE THE CORRECT SIZE ON SITE AND ADJUST CONNECTION ACCORDINGLY. PROVIDE NEW DUCT, PIPING, EQUIPMENT, CONTROLS AND ETC. IF ONE IS NOT PRESENT.
2. CONTRACTOR TO KEEP RECORD OF NEW SYSTEM, CONTROLS, PIPING, DUCTWORK INSTALLED AS WELL AS EXISTING TO REMAIN, AND ITEMS DISCOVERED OR ENCOUNTERED ON SITE THAT WERE NOT SHOWN ON THE PLANS. THESE INCLUDE SYSTEMS, DUCTWORK, PIPE, ETC THAT DO NOT AFFECT OR ARE NOT PART OF THE PROJECT SCOPE, BUT ARE WITHIN THE BOUNDARIES OF THE PROJECT SCOPE. CONTRACTOR IS RESPONSIBLE FOR PROVIDING AS-BUILT DRAWINGS THAT ACCURATELY REFLECT THE CONDITIONS WITHIN THE BOUNDARY OF THE PROJECT SCOPE AT THE END OF THE PROJECT.
3. PIPING AND DUCTWORK LOCATIONS SHOWN ON THE PLAN ARE APPROXIMATE. CONTRACTOR TO VERIFY EXACT LOCATION PRIOR TO COMMENCING WORK.
4. SEE M6.1-M6.7 FOR MECHANICAL LEGEND, SCHEDULES AND DETAILS.



1 SHEET IS REVISED PER ADDENDUM #2.



615 SE JACKSON STREET  
 PORTLAND, OR 97214  
 PH: (503) 234-0548  
 FAX: (503) 234-0677  
 paul@paulbentleyarchitect.com

PAUL L BENTLEY Architect A.I.A. P.C.

- 1 -ADD #2 2/22/2018
- 2 -ADD #3 3/2/2018
- 3 -PHASE#2 6.12.18

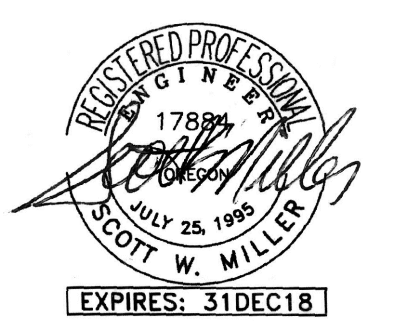
CONSTRUCTION SET 6.10.18

MEDIA CONSULTING ENGINEERS  
 2007 S.E. Ash St.  
 Portland, OR 97214  
 PHN: (503) 234-0548  
 FAX: (503) 234-0677  
 WWW.MEDIA-ENG.COM  
 CONTACT: Elena von Kamens

A NEW REMODEL PROJECT FOR:

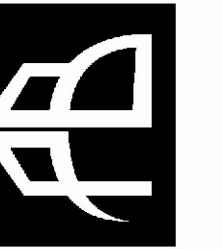
# SHERWOOD HIGH SCHOOL

16956 SW MEINCKE ROAD SHERWOOD, OR



DRAWN BY:	EVK
CHECKED BY:	SWM
DATE:	1-30-18
TITLE:	PARTIAL HVAC DEMO PLANS
SCALE:	1/8" = 1'-0"

SHEET NO:	DM-1.5
	5 OF 8



615 SE JACOB STREET  
PORTLAND, OR 97214  
503.425.8273 OFFICE  
503.425.7560 FAX  
PAUL@PAULBENTLEYARCHITECT.COM

PAUL L BENTLEY Architect A.I.A. P.C.

1 - ADD #2 2/22/2018  
3 - PHASE#2 6.12.18

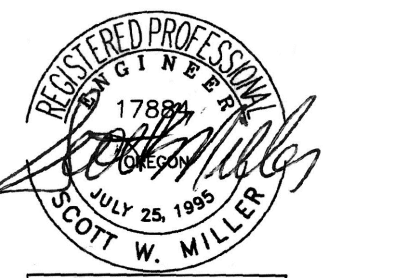
CONSTRUCTION SET 6.10.18

MFA Consulting Engineers  
2007 S.E. Ash St.  
Portland, OR 97214  
PH: (503) 234-0548  
FAX: (503) 234-0677  
WWW.MFA-ENG.COM  
CONTACT: Elena von Kaments

A NEW REMODEL PROJECT FOR:

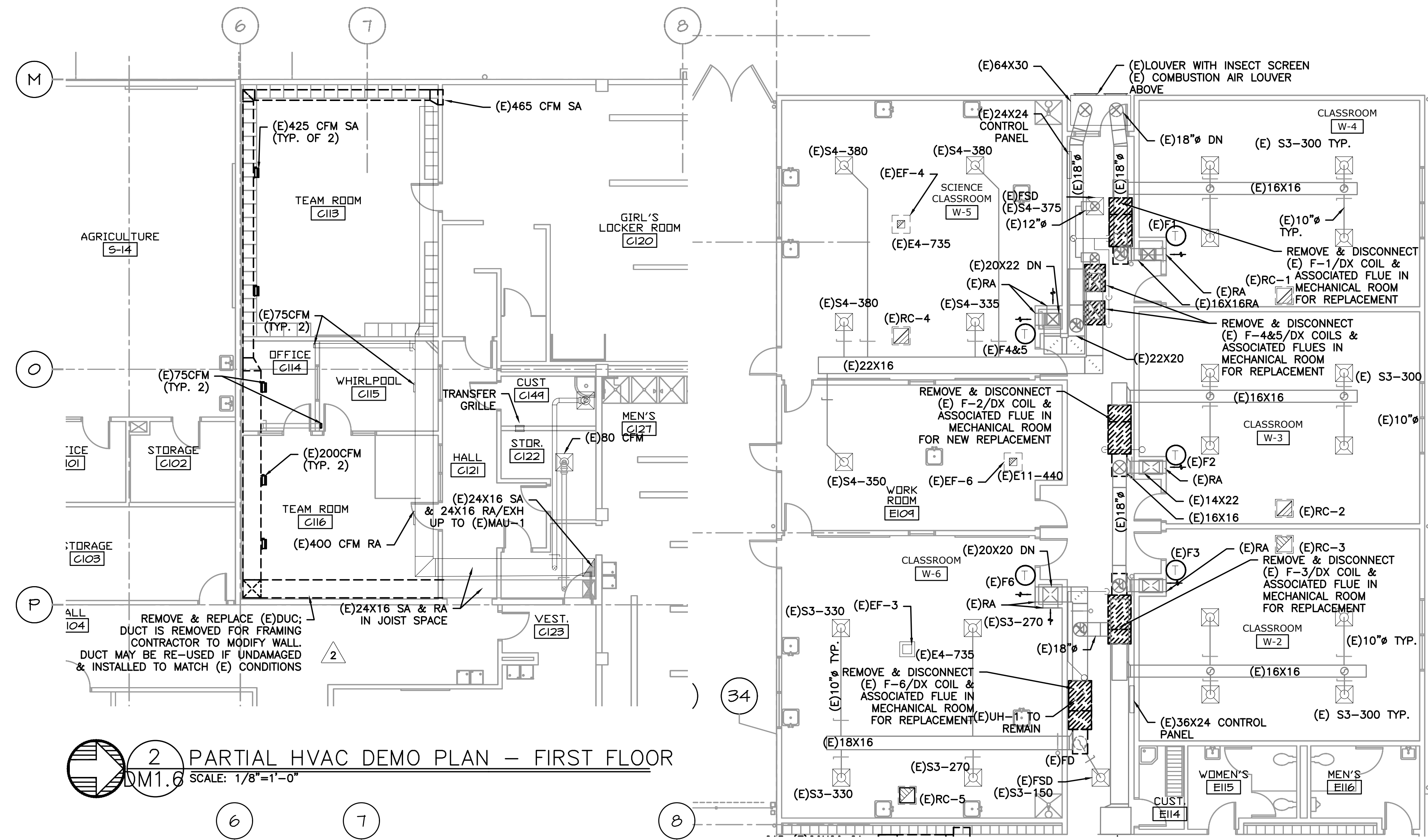
# SHERWOOD HIGH SCHOOL

16956 SW MEINCKE ROAD  
SHERWOOD, OR

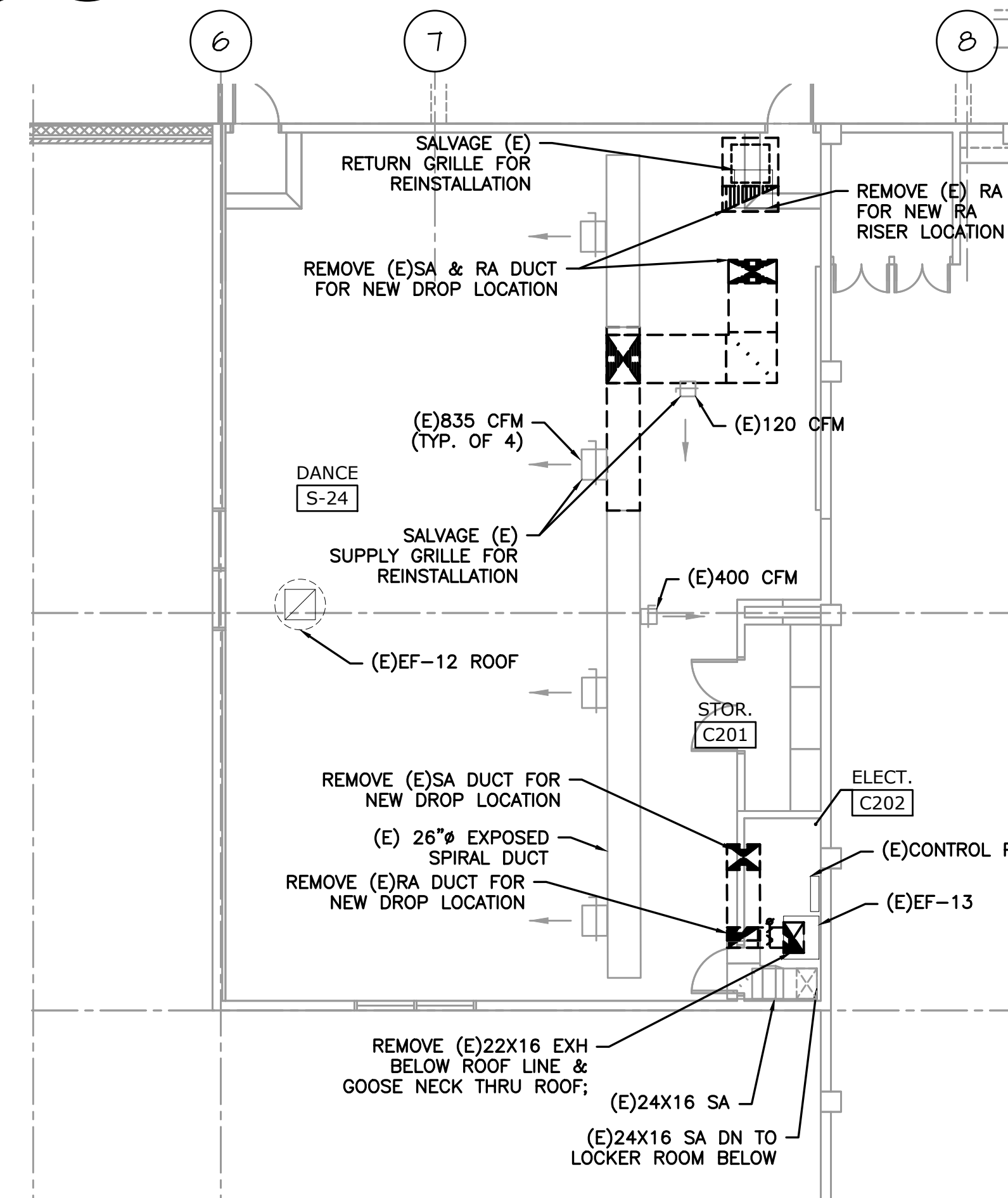


DRAWN BY:	EVK
CHECKED BY:	SWM
DATE:	1-30-18
TITLE:	PARTIAL HVAC DEMO PLANS
SCALE:	1/8" = 1'-0"

SHEET NO:	DM-1.6
	6 OF 7



**2 PARTIAL HVAC DEMO PLAN - FIRST FLOOR**  
DM1.6 SCALE: 1/8"=1'-0"



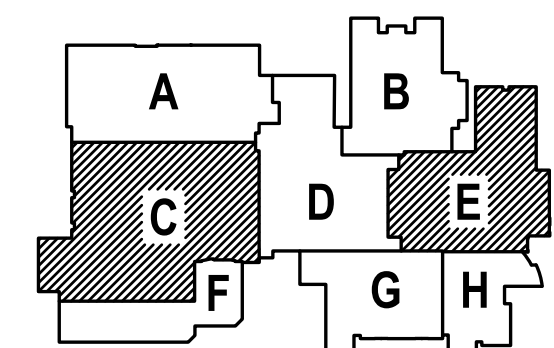
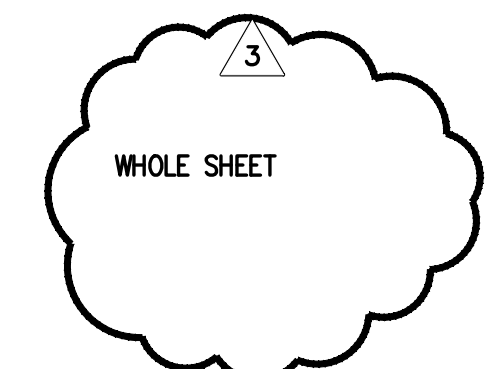
**3 PARTIAL HVAC DEMO PLAN - SECOND FLOOR**  
DM1.6 SCALE: 1/8"=1'-0"

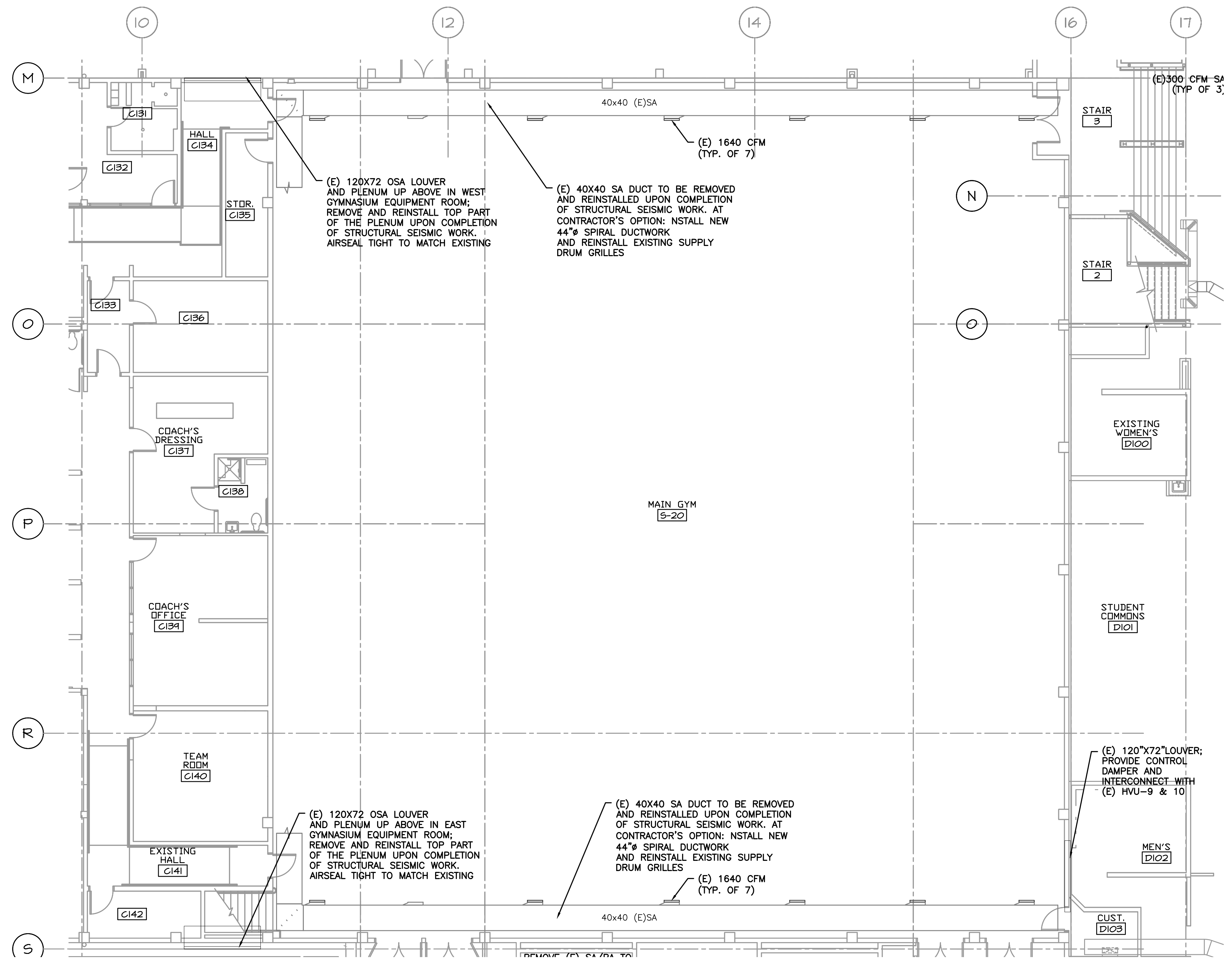
**1 PARTIAL HVAC DEMO PLAN**  
DM1.6 SCALE: 1/8"=1'-0"

**GENERAL SHEET NOTES:**

- CONTRACTOR TO VERIFY LOCATION AND SIZES OF EXISTING DUCTWORK, PIPING, EQUIPMENT, CONTROLS, ETC. PRIOR TO COMMENCING WORK. IF SHOWN LOCATION OR SIZE DIFFER FROM PLANS, LOCATE THE CORRECT SIZE ON SITE AND ADJUST CONNECTION ACCORDINGLY. PROVIDE NEW DUCT, PIPING, EQUIPMENT, CONTROLS AND ETC. IF ONE IS NOT PRESENT.
- CONTRACTOR TO KEEP RECORD OF NEW SYSTEM, CONTROLS, PIPING, DUCTWORK INSTALLED AS WELL AS EXISTING TO REMAIN, AND ITEMS DISCOVERED OR ENCOUNTERED ON SITE THAT WERE NOT SHOWN ON THE PLANS. THESE INCLUDE SYSTEMS, DUCTWORK, PIPE, ETC THAT DO NOT AFFECT OR ARE NOT PART OF THE PROJECT SCOPE. CONTRACTOR IS RESPONSIBLE FOR PROVIDING AS-BUILT DRAWINGS THAT ACCURATELY REFLECT THE CONDITIONS WITHIN THE BOUNDARY OF THE PROJECT SCOPE AT THE END OF THE PROJECT.
- PIPING AND DUCTWORK LOCATIONS SHOWN ON THE PLAN ARE APPROXIMATE. CONTRACTOR TO VERIFY EXACT LOCATION PRIOR TO COMMENCING WORK.
- SEE M6.1-M6.7 FOR MECHANICAL LEGEND, SCHEDULES AND DETAILS.

1 SHEET IS REVISED PER ADDENDUM #2.



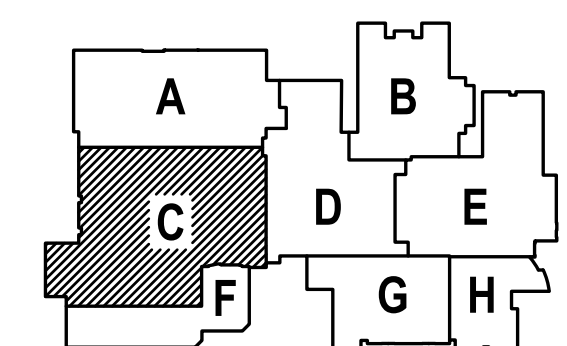


1 PARTIAL HVAC DEMO PLAN  
 DM1. SCALE: 1/8"=1'-0"

**GENERAL SHEET NOTES:**

- CONTRACTOR TO VERIFY LOCATION AND SIZES OF EXISTING DUCTWORK, PIPING, EQUIPMENT, CONTROLS, ETC. PRIOR TO COMMENCING WORK. IF SHOWN LOCATION OR SIZE DIFFER FROM PLANS, LOCATE THE CORRECT SIZE ON SITE AND ADJUST CONNECTION ACCORDINGLY. PROVIDE NEW DUCT, PIPING, EQUIPMENT, CONTROLS AND ETC. IF ONE IS NOT PRESENT.
- CONTRACTOR TO KEEP RECORD OF NEW SYSTEM, CONTROLS, PIPING, DUCTWORK INSTALLED AS WELL AS EXISTING TO REMAIN, AND ITEMS DISCOVERED OR ENCOUNTERED ON SITE THAT WERE NOT SHOWN ON THE PLANS. THESE INCLUDE SYSTEMS, DUCTWORK, PIPE, ETC THAT DO NOT AFFECT OR ARE NOT PART OF THE PROJECT SCOPE, BUT ARE WITHIN THE BOUNDARIES OF THE PROJECT SCOPE. CONTRACTOR IS RESPONSIBLE FOR PROVIDING AS-BUILT DRAWINGS THAT ACCURATELY REFLECT THE CONDITIONS WITHIN THE BOUNDARY OF THE PROJECT SCOPE AT THE END OF THE PROJECT.
- PIPING AND DUCTWORK LOCATIONS SHOWN ON THE PLAN ARE APPROXIMATE. CONTRACTOR TO VERIFY EXACT LOCATION PRIOR TO COMMENCING WORK.
- SEE M6.1-M6.7 FOR MECHANICAL LEGEND, SCHEDULES AND DETAILS.

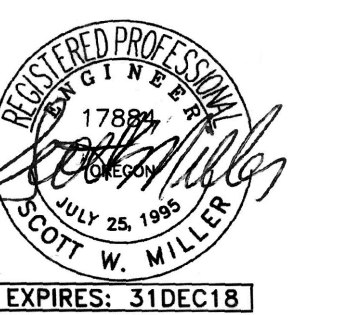
1  
 SHEET IS REVISED PER ADDENDUM #2.



1 -ADD #2 2/22/2018

CONSTRUCTION SET-6.10.18  
**M F I A**  
 INC.  
 Consulting Engineers  
 2007 S.E. Ash St.  
 Portland, OR 97214  
 PH: (503) 234-0548  
 FAX: (503) 234-0677  
 WWW.MFIA-ENG.COM  
 CONTACT: Elena von Kaments

A NEW REMODEL PROJECT FOR:  
**SHERWOOD HIGH SCHOOL**  
 16956 SW MEINECKE ROAD  
 SHERWOOD, OR



DRAWN BY:	EVK
CHECKED BY:	SWM
DATE:	1-30-18
TITLE:	PARTIAL HVAC DEMO PLANS
SCALE:	1/8" = 1'-0"

SHEET NO:	DM-1.7
	7 OF 7