

REGISTERED ARCHITECT  
 W. BRUCE MORRISON  
 PORTLAND, OREGON  
 No. 248

REGISTERED PROFESSIONAL  
 ENGINEER  
 1840  
 W. BRUCE MORRISON  
 MAY 7, 1917  
 OREGON

O.S.C.I. UNIT #19 ADDITION	678-26
PLUMBING FLOOR PLAN	M-2 OF 4

W. BRUCE MORRISON & ASSOCIATES  
 CONSULTING ENGINEERS  
 2007 S. E. ASH  
 PORTLAND 14, OREGON

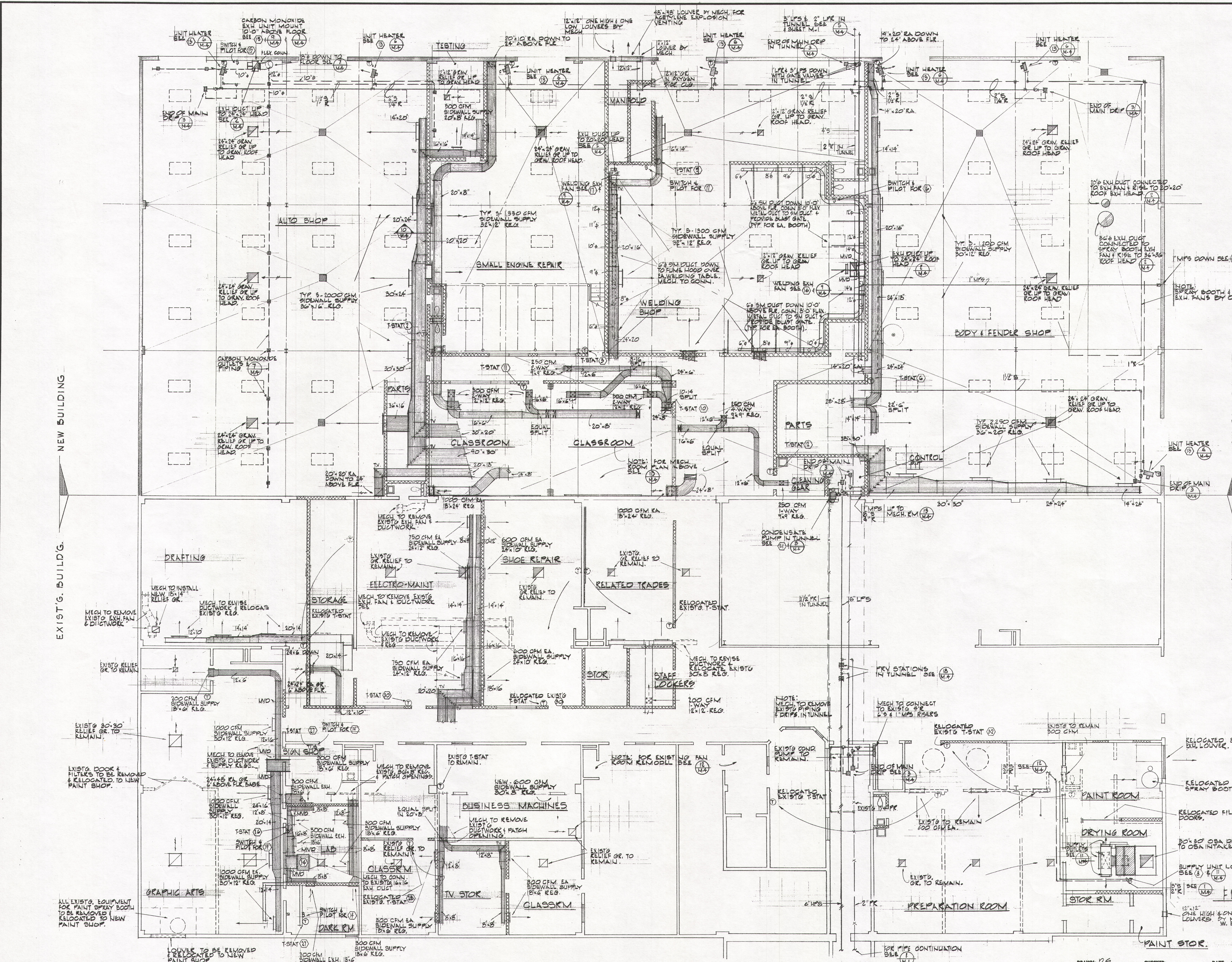
DRAWN: *WRS* CHECKED: DATE: *10/27, 1967*

OREGON STATE CORRECTIONAL INSTITUTION INDUSTRIAL VOCATIONAL UNIT #19 ADDITION SALEM OREGON

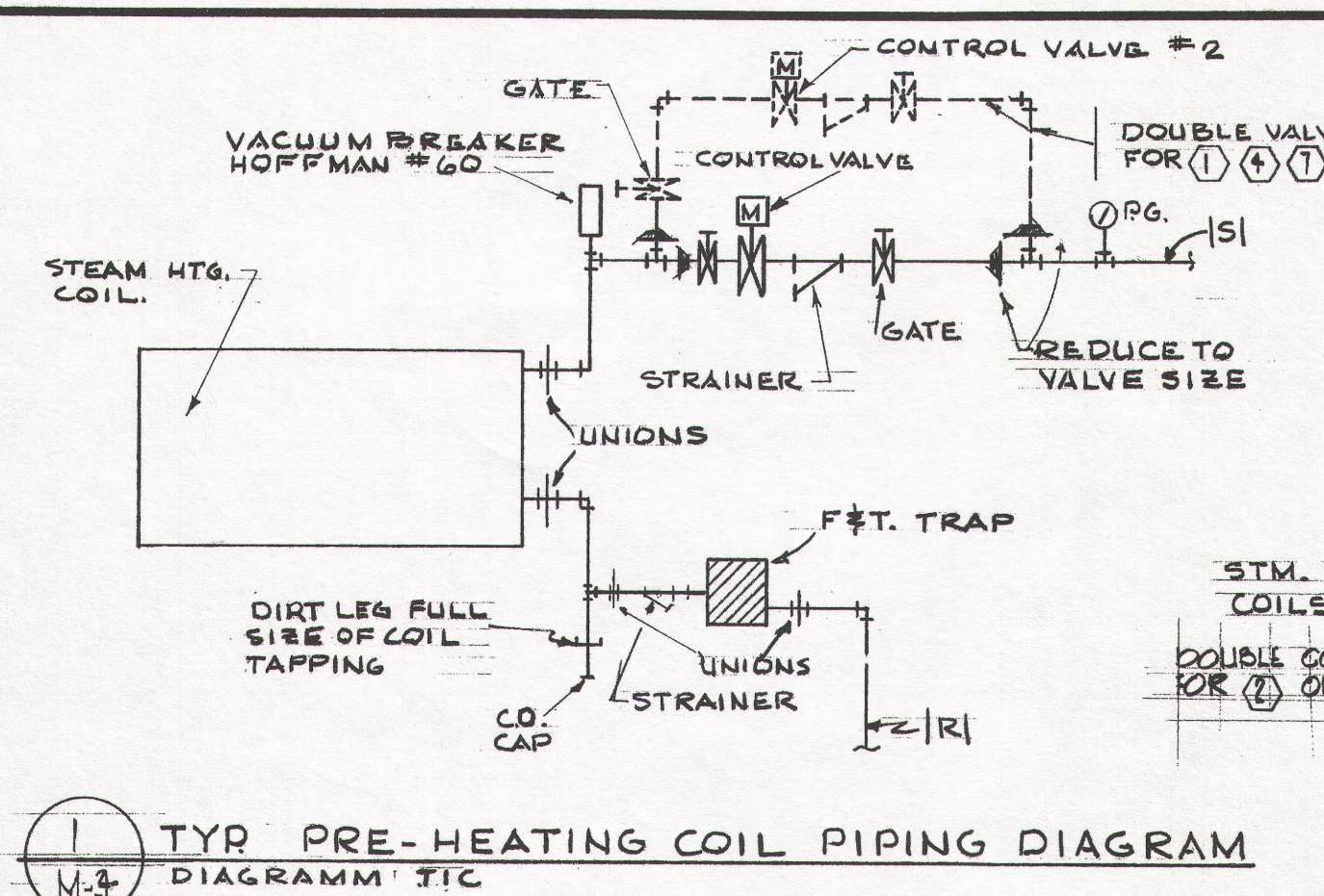
NO.	DATE	REVISIONS
1	9/2/70	AS BUILT

ANNAND - BOONE  
 DRYNAN & HUFFSTUTTER  
 ARCHITECTS & ENGINEERS  
 3933 S.W. ELLY AVENUE PORTLAND, OREGON 97201

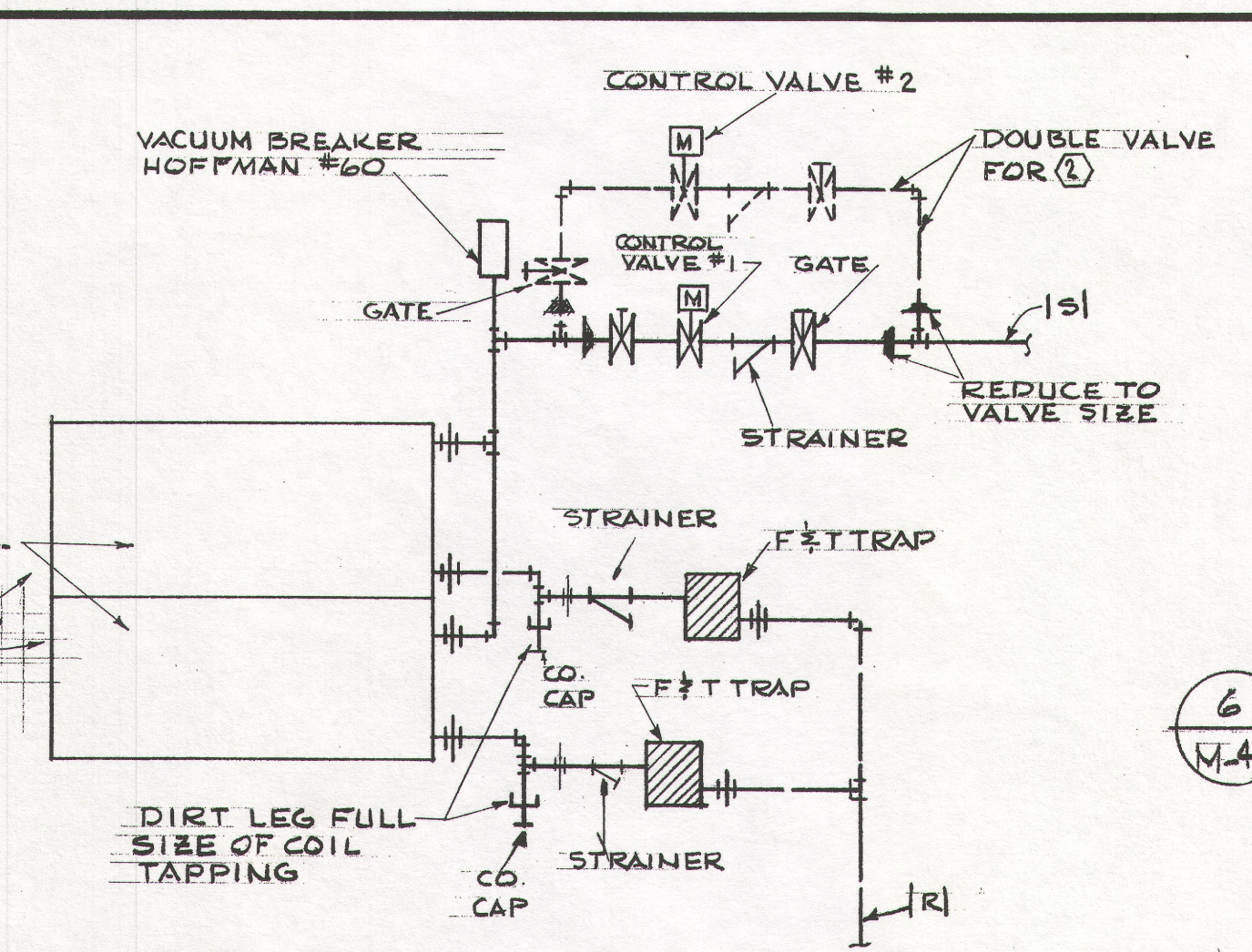
O.S.C.I. Plumbing



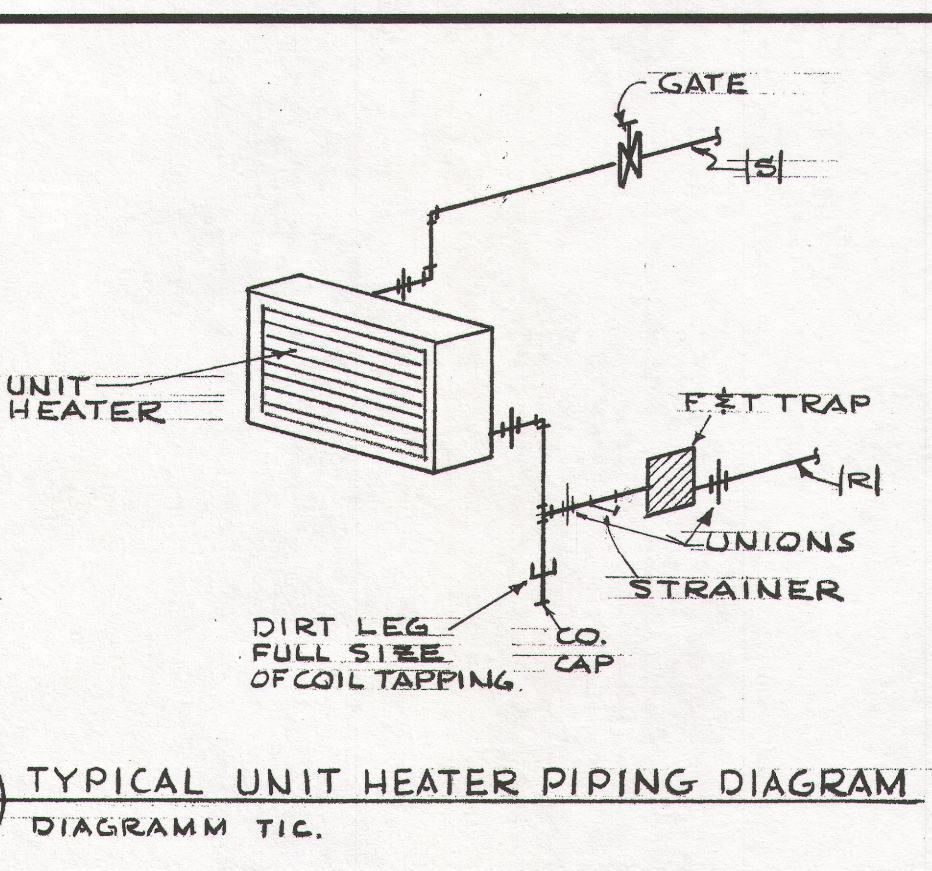
- ### MECHANICAL EQUIPMENT LIST
- SUPPLY UNIT FOR AUTO SHOP & SMALL ENGINE REPAIR  
4,500 CFM @ 1/2" EX. S.P., 500 FPM OV., 750 RPM, 3500 FPM T.S.; FC FAN;  
10 HP MOTOR; VIBRATION ISOLATORS  
PRE HEAT COIL TO FIT UNIT; 12,800 CFM @ 600 FPM MAX. EV.; COIL FROM 10°F TO 60°F; VALVE 1" 1562/HR.; VALVE 2" 187/HR.; TRAP 210/HR.; 3/8" & 2" R. ON 2 PSI STM.
  - BOOSTER COIL FOR AUTO SHOP (2-SEED)  
4,500 CFM @ 600 FPM MAX. EV.; COIL SIZE 42" x 38" EA. COIL FROM 50°F TO 100°F; VALVE 1 1/2" 1562/HR.; VALVE 2 1/2" 187/HR. ON 2 PSI STM.
  - BOOSTER COIL FOR SMALL ENGINE REPAIR  
4,500 CFM @ 600 FPM MAX. EV.; COIL SIZE 42" x 38" EA. COIL FROM 50°F TO 100°F; VALVE 1 1/2" 1562/HR.; VALVE 2 1/2" 187/HR. ON 2 PSI STM.
  - SUPPLY UNIT FOR BODY & FENDER SHOP & WELDING SHOP  
12,500 CFM @ 1/2" EX. S.P., 2500 FPM OV., 800 RPM; 3500 FPM T.S.; FC FAN;  
10 HP MOTOR; VIBRATION ISOLATORS  
PRE HEAT COIL TO FIT UNIT; 12,800 CFM @ 600 FPM MAX. EV.; COIL FROM 10°F TO 60°F; VALVE 1" 1562/HR.; VALVE 2" 187/HR.; TRAP 210/HR.; 3/8" & 2" R. ON 2 PSI STM.
  - BOOSTER COIL FOR WELDING SHOP  
6,500 CFM @ 600 FPM MAX. EV.; COIL SIZE 45" x 39" EA. COIL FROM 50°F TO 100°F; VALVE 2 1/2" 187/HR.; TRAP 210/HR. ON 2 PSI STM.
  - BOOSTER COIL FOR BODY & FENDER SHOP  
6,000 CFM @ 600 FPM MAX. EV.; COIL SIZE 42" x 38" EA. COIL FROM 50°F TO 100°F; VALVE 1 1/2" 1562/HR.; VALVE 2 1/2" 187/HR. ON 2 PSI STM.
  - SUPPLY UNIT FOR SPRAY BOOTH  
10,000 CFM @ 1/2" EX. S.P., 2000 FPM OV.; 450 RPM; 2600 FPM T.S.; FC FAN;  
5 HP MOTOR; VIBRATION ISOLATORS  
PRE HEAT COIL TO FIT UNIT; 10,000 CFM @ 600 FPM MAX. EV.; COIL FROM 10°F TO 70°F; VALVE 1" 1562/HR.; VALVE 2" 187/HR.; TRAP 210/HR.; 3/8" & 2" R. ON 2 PSI STM.
  - SUPPLY UNIT FOR SPRAY ROOM  
1,000 CFM @ 1/2" EX. S.P., 1500 FPM OV.; 445 RPM; 2600 FPM T.S.; FC FAN;  
5 HP MOTOR; VIBRATION ISOLATORS  
PRE HEAT COIL TO FIT UNIT; 1,000 CFM @ 600 FPM MAX. EV.; COIL FROM 10°F TO 70°F; VALVE 1" 1562/HR.; VALVE 2" 187/HR.; TRAP 210/HR.; 3/8" & 2" R. ON 2 PSI STM.
  - SUPPLY UNIT FOR CLASSROOMS  
3,000 CFM @ 1/2" EX. S.P., 1000 FPM OV.; 565 RPM; 2800 FPM T.S.; FC FAN;  
2 HP MOTOR; VIBRATION ISOLATORS
  - BOOSTER COIL FOR CLASSROOM & CORRIDOR  
1,500 CFM @ 600 FPM MAX. EV.; COIL SIZE 24" x 18" EA. COIL FROM 50°F TO 90°F; VALVE 1 1/2" 1562/HR.; TRAP 210/HR. ON 2 PSI STM.
  - BOOSTER COIL FOR CLASSROOM  
1,000 CFM @ 600 FPM MAX. EV.; COIL SIZE 18" x 18" EA. COIL FROM 50°F TO 90°F; VALVE 1 1/2" 1562/HR.; TRAP 210/HR. ON 2 PSI STM.
  - BOOSTER COIL  
500 CFM @ 600 FPM MAX. EV.; COIL SIZE 15" x 15" EA. COIL FROM 50°F TO 90°F; VALVE 1 1/2" 1562/HR.; TRAP 210/HR. ON 2 PSI STM.
  - UNIT HEATERS (7-REED)  
1,200 CFM @ 600 FPM MAX. EV.; 60 ENT AIR @ 1/2" S.P.; 1/2 HP MOTOR; 1050 RPM; TRAP 75/HR.; 1/2" & 1" K.
  - CABINET EXH. UNIT  
1,500 CFM @ 1/2" EX. S.P., 150 FPM OV.; 688 RPM; 750 FPM T.S.; 1/4 HP MOTOR; VIBRATION ISOLATORS.
  - CARBON MONOXIDE EXH. UNIT  
4,000 CFM @ 2 1/2" S.P., 5 HP MOTOR. B.C. FAN - SEE SPEC'S.
  - WELDING EXH. FAN  
4,225 CFM @ 2 1/2" S.P.; 2400 FPM OV.; 3 HP MOTOR. FC FAN.
  - WELDING EXH. FAN  
2,000 CFM @ 2 1/2" S.P.; 2400 FPM OV.; 1 1/2 HP MOTOR. FC FAN.
  - PRESSURE REDUCING VALVE  
10,000 CFM @ 110 PSIG TO 40 PSIG.
  - PRESSURE REDUCING VALVE  
5,000 CFM @ 40 PSIG TO 7 PSIG.
  - CONDENSATE PUMP (DUPLEX)  
20 GPM @ 100 PSI DISCH. PRESS.; 30 GPM PUMP CAPACITY  
3 1/2 GAL RECEIVER.
  - EXISTO SUPPLY FAN - ALADDIN TYPE FC #245 - CHANGE FROM 8,000 CFM TO 4,200 CFM. FROM 350 RPM TO 150 RPM - FOR PREHEAT COIL PROVIDE NEW VALVE 1 1/2" 1562/HR. FOR REHEAT COIL PROVIDE NEW VALVE 2 1/2" 187/HR.
  - EXISTO SUPPLY FAN - PAGE TYPE A.C.V. #P747B - CHANGE FROM 8,160 CFM TO 1,200 CFM, FROM 505 RPM TO 652 RPM. - ABANDON EXISTO HTG. COIL IN UNIT.
  - REHEAT COIL 600 CFM @ 600 FPM MAX. EV.; COIL SIZE 15" x 15" EA. COIL FROM 50°F TO 100°F; VALVE 1 1/2" 1562/HR.; TRAP 210/HR. ON 2 PSI STM.
  - REHEAT COIL 300 CFM @ 600 FPM MAX. EV.; COIL SIZE 15" x 15" EA. COIL FROM 50°F TO 100°F; VALVE 1 1/2" 1562/HR.; TRAP 210/HR. ON 2 PSI STM.
  - REHEAT COIL 1200 CFM @ 600 FPM MAX. EV.; COIL SIZE 21" x 15" EA. COIL FROM 50°F TO 100°F; VALVE 1 1/2" 1562/HR.; TRAP 210/HR. ON 2 PSI STM.
  - ABANDON EXISTO COIL IN UNIT.
  - TWO COILS REOD. REHEAT COIL 2400 CFM @ 600 FPM MAX. EV.; COIL SIZE 38" x 21" EA. COIL FROM 50°F TO 90°F; VALVE 1 1/2" 1562/HR.; TRAP 210/HR. ON 2 PSI STM.
  - EXISTO SUPPLY FAN - PAGE TYPE A.C.V. #P747F - CHANGE FROM 2,250 CFM TO 1,500 CFM, FROM 1000 RPM TO 840 RPM. FOR PREHEAT COIL PROVIDE NEW VALVE 1 1/2" 1562/HR.
  - EXISTO SUPPLY FAN - PAGE TYPE A.C.V. #P747J - CHANGE FROM 1,500 CFM TO 810 CFM, FROM 720 RPM TO 880 RPM. PROVIDE NEW 1/4 HP MOTOR. PROVIDE NEW VALVE 1 1/2" 1562/HR. TRAP 210/HR. RECONNECT TO EXISTO PIPING.
- NOTES:  
 1) PROVIDE NEW OVERLOAD PROTECTION WHERE REQUIRED.  
 2) SERVICE ALL EXISTO FANS.  
 3) MOUNT ALL THERMOSTATS UP 60" - THERMOSTATS ON EXTERIOR WALLS. PROVIDE RIGID INSULATION ON BACK.  
 4) ALL MECHANICAL EQUIPMENT THAT IS REMOVED AND NOT REUSED SHALL BE TURNED OVER TO THE OWNERS PROJECT MANAGER IN AN ORDERLY ARRANGEMENT TO A LOCATION ON THE INSTITUTION SITE AS DIRECTED.



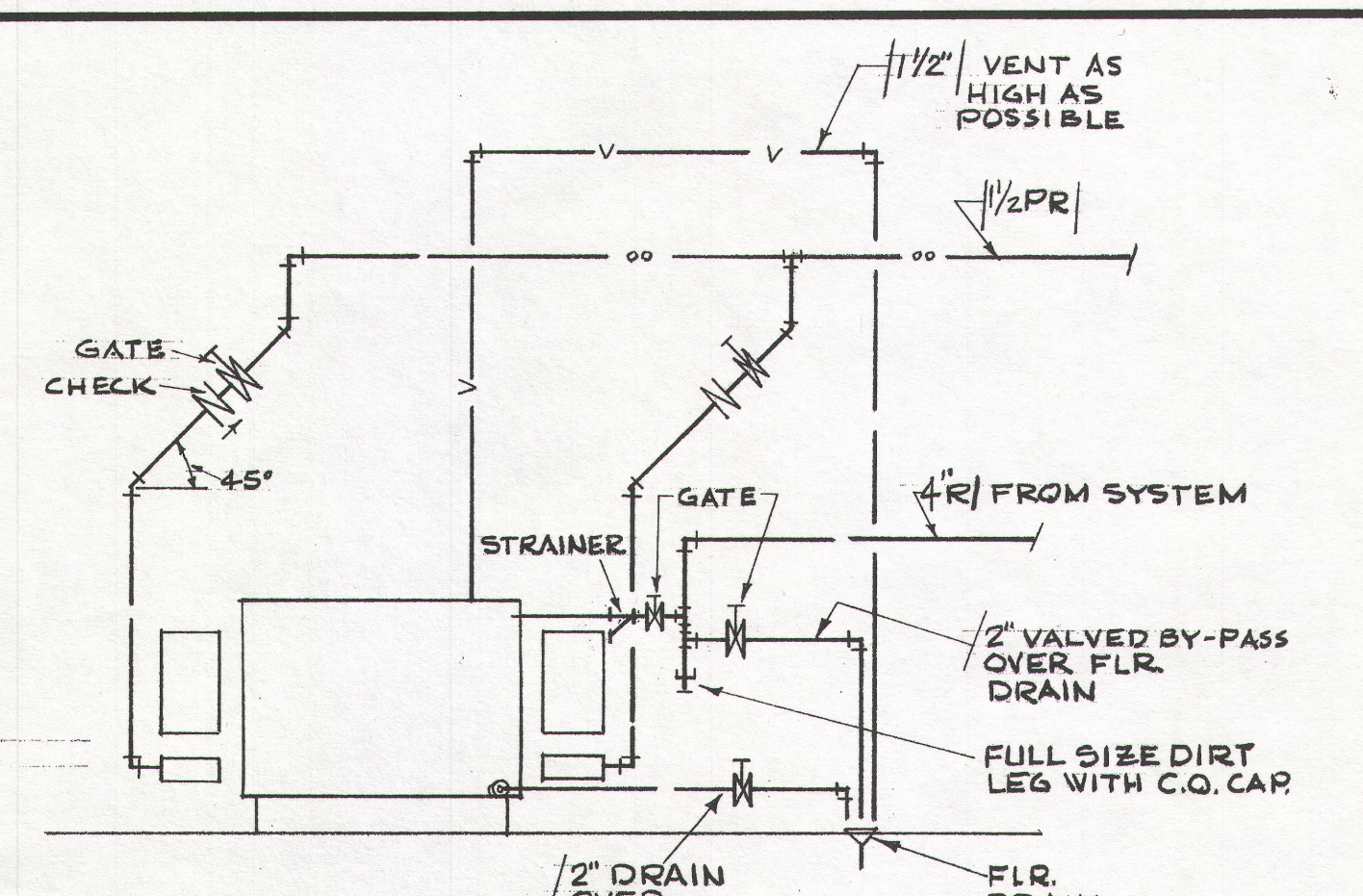
1 TYP PRE-HEATING COIL PIPING DIAGRAM  
M.4 DIAGRAM TIC.



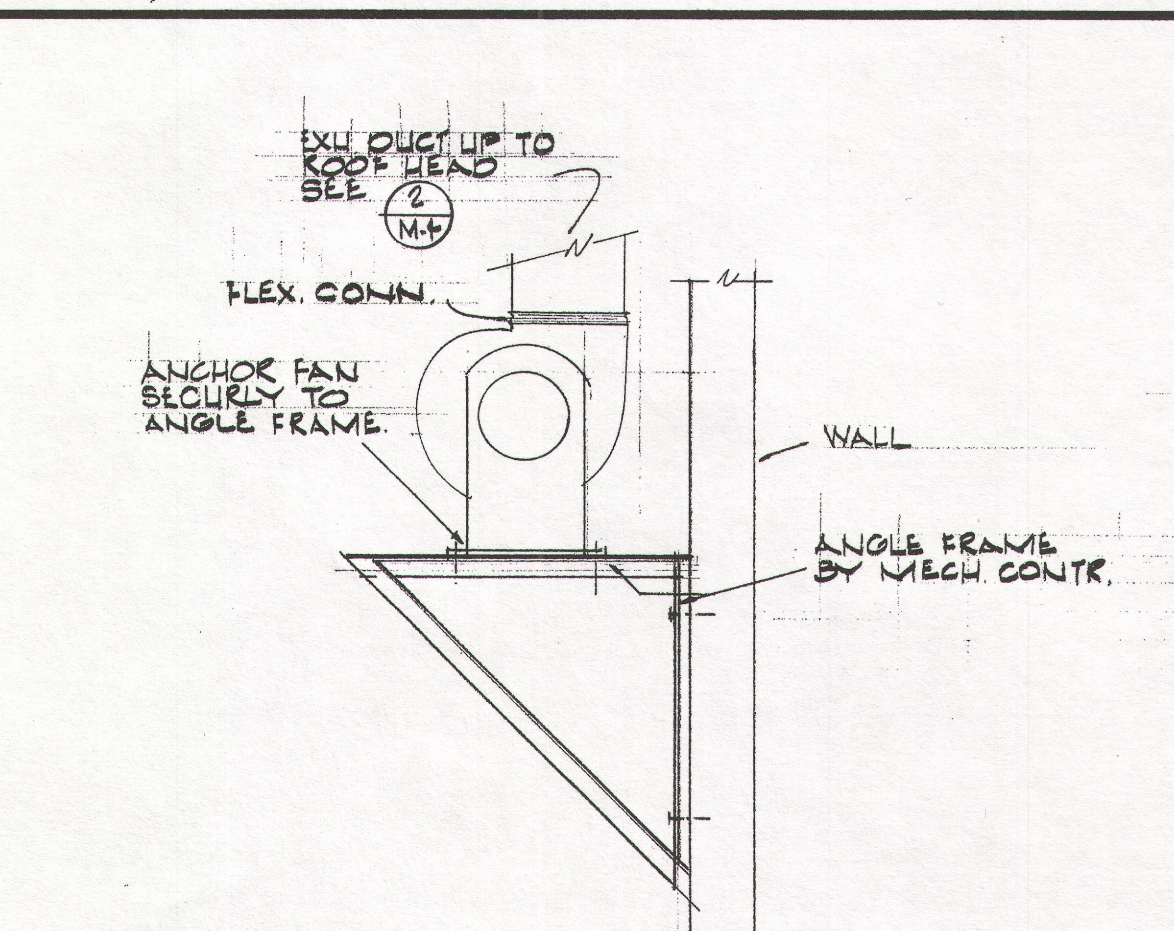
4 TYPICAL BOOSTER COIL PIPING DIAGRAM  
M.4 DIAGRAM TIC.



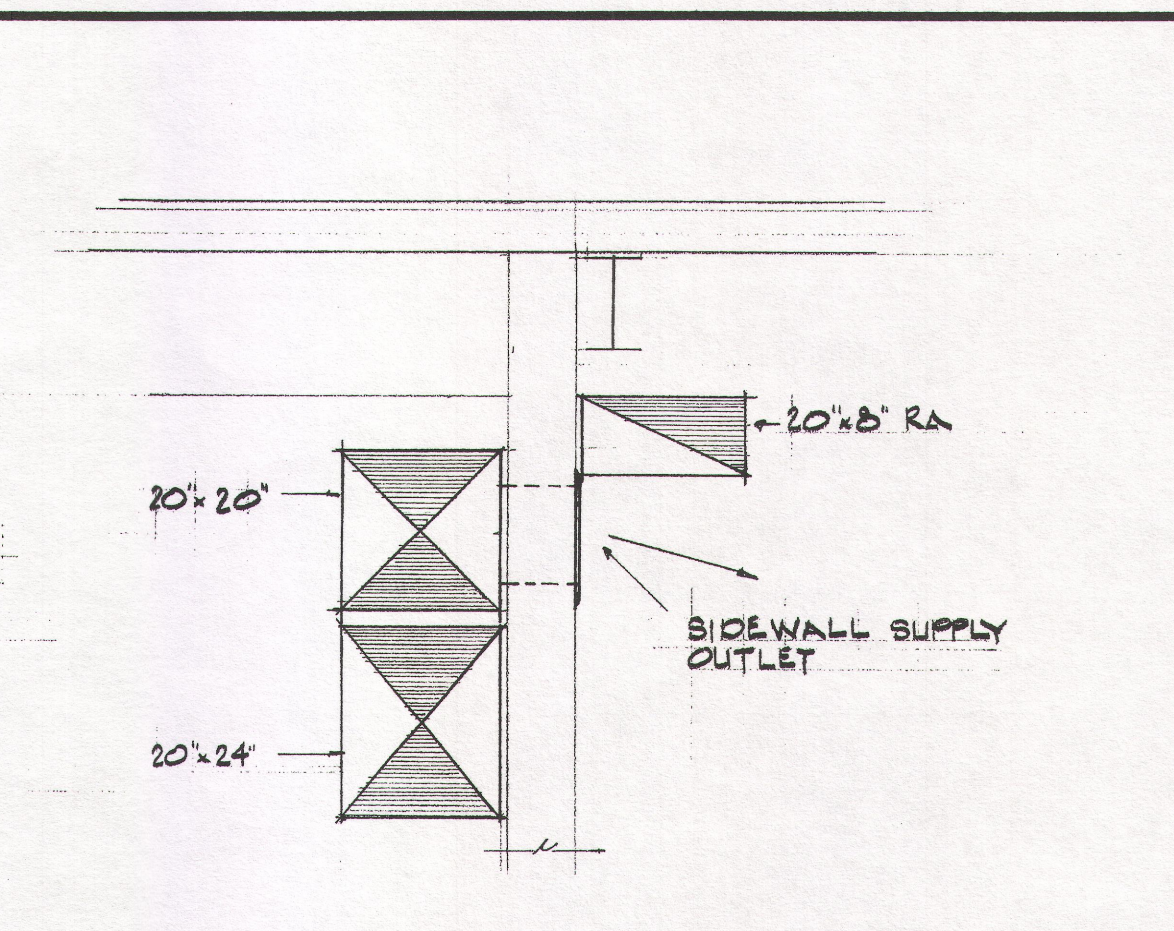
6 TYPICAL UNIT HEATER PIPING DIAGRAM  
M.4 DIAGRAM TIC.



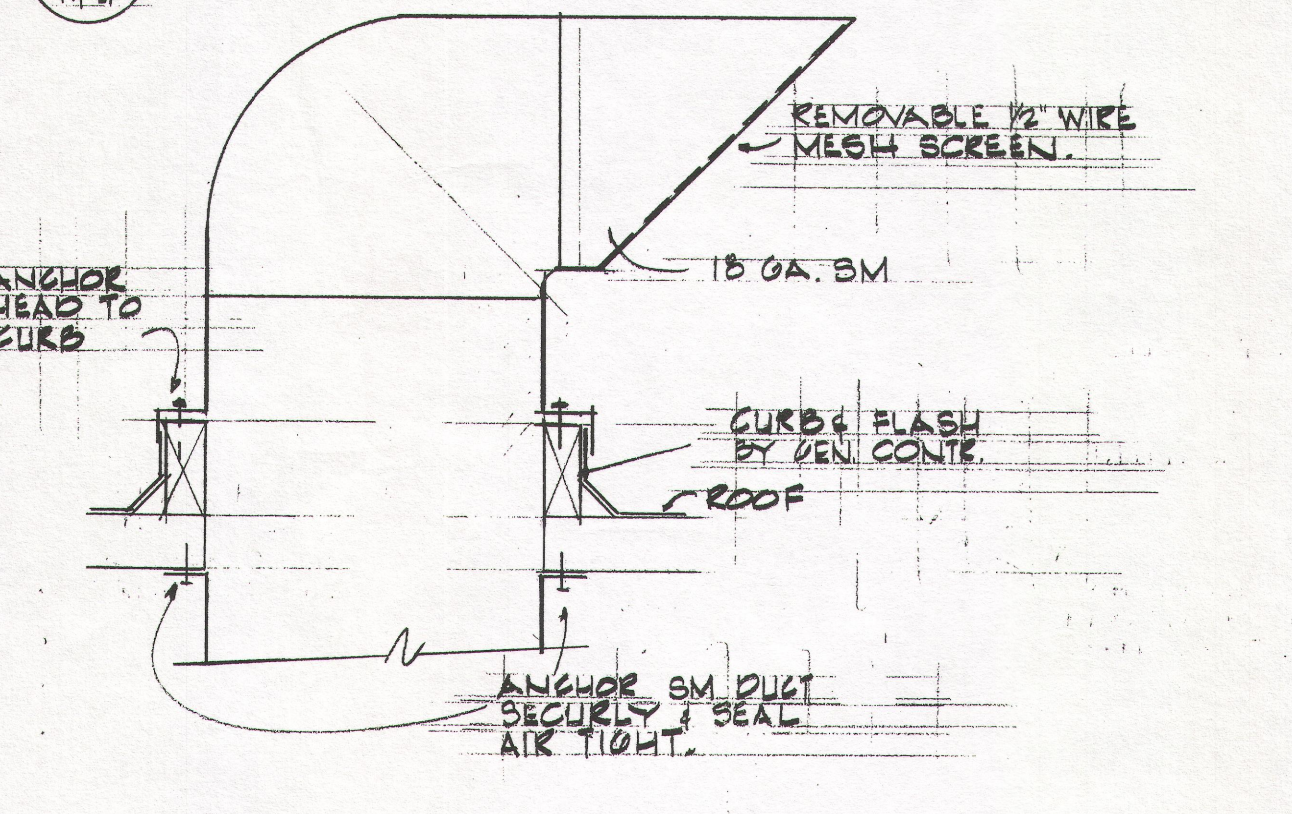
8 CONDENSATE RETURN PUMP PIPING  
M.4 DIAGRAM TIC.



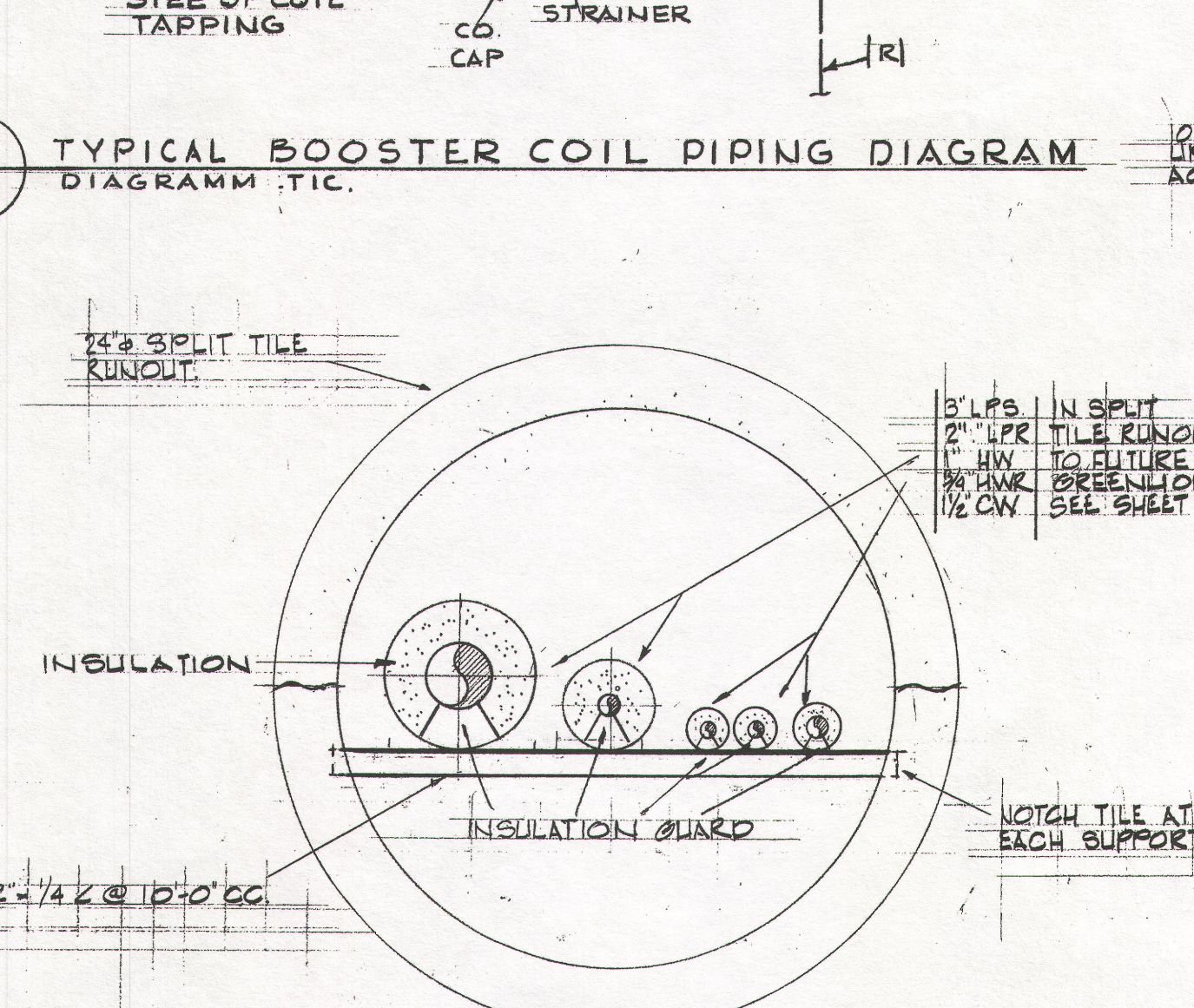
9 TYPICAL EXHAUST FAN DETAIL  
M.4 NOT TO SCALE.



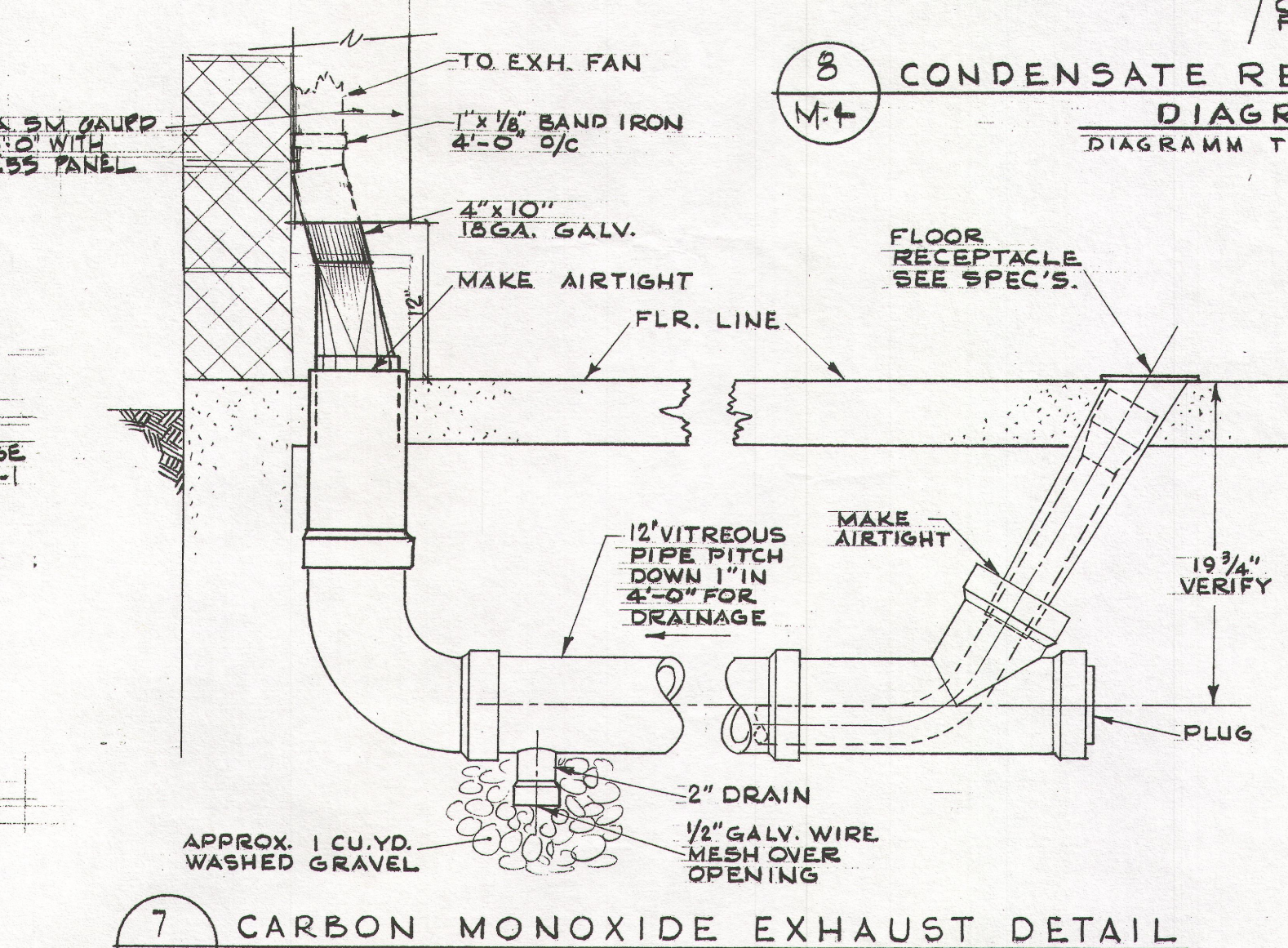
10 SECTION  
M.4 1/2" = 1'-0"



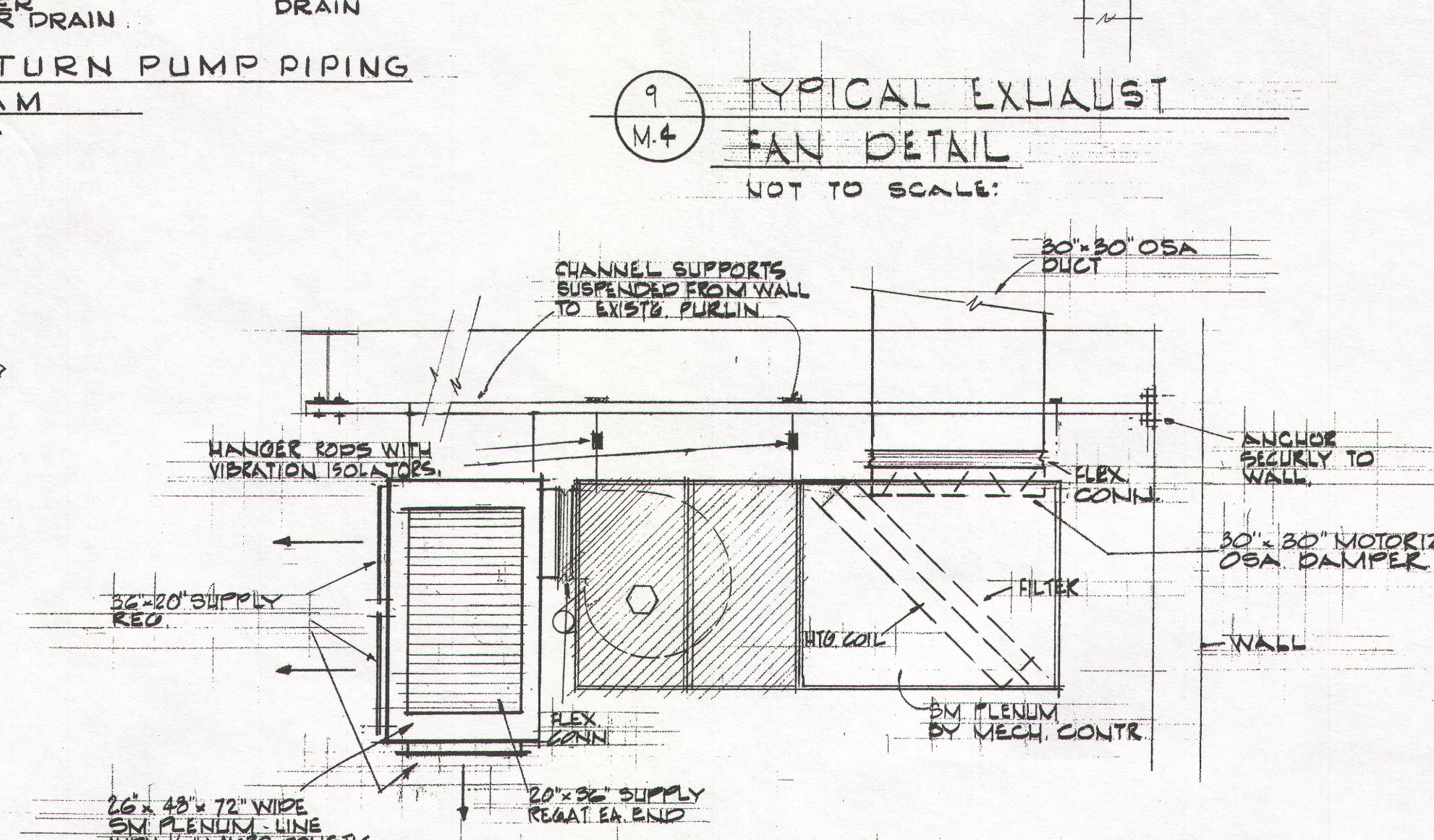
2 ROOF HEAD DETAIL  
M.4 NOT TO SCALE.



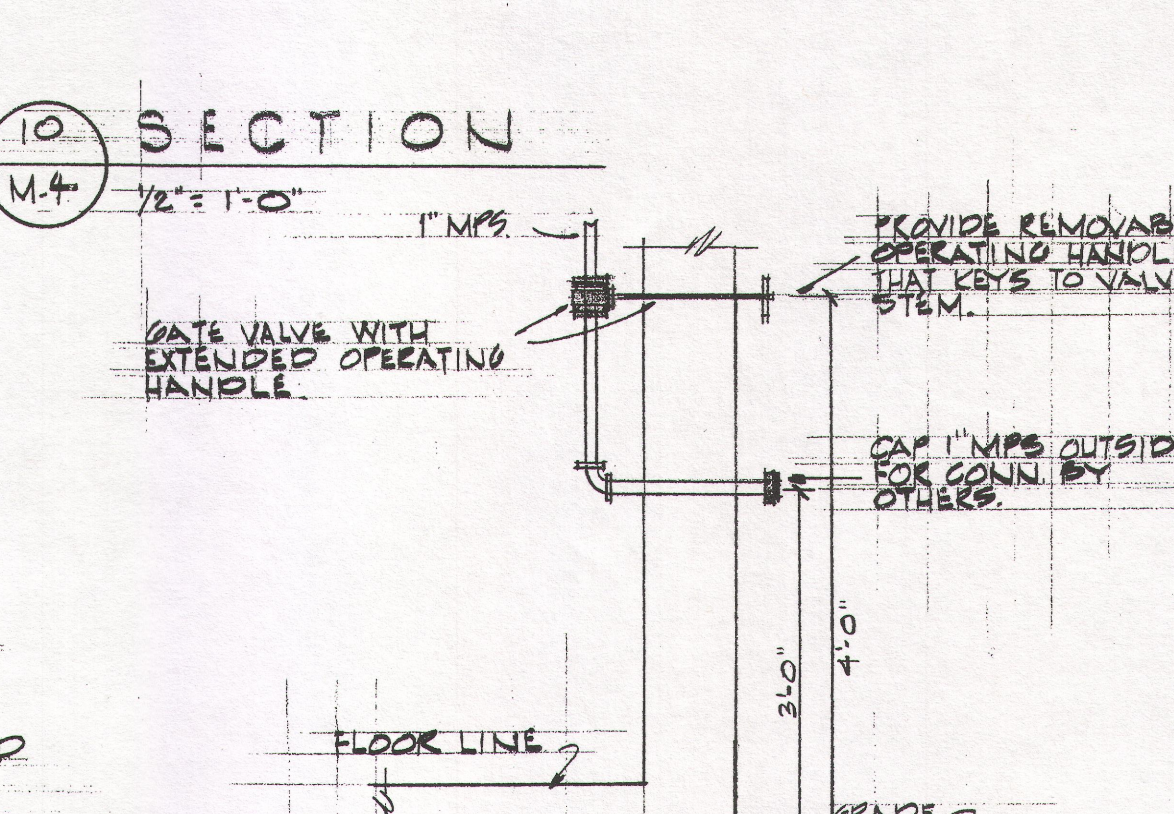
5 SPLIT TILE RUNOUT  
M.4 NOT TO SCALE.



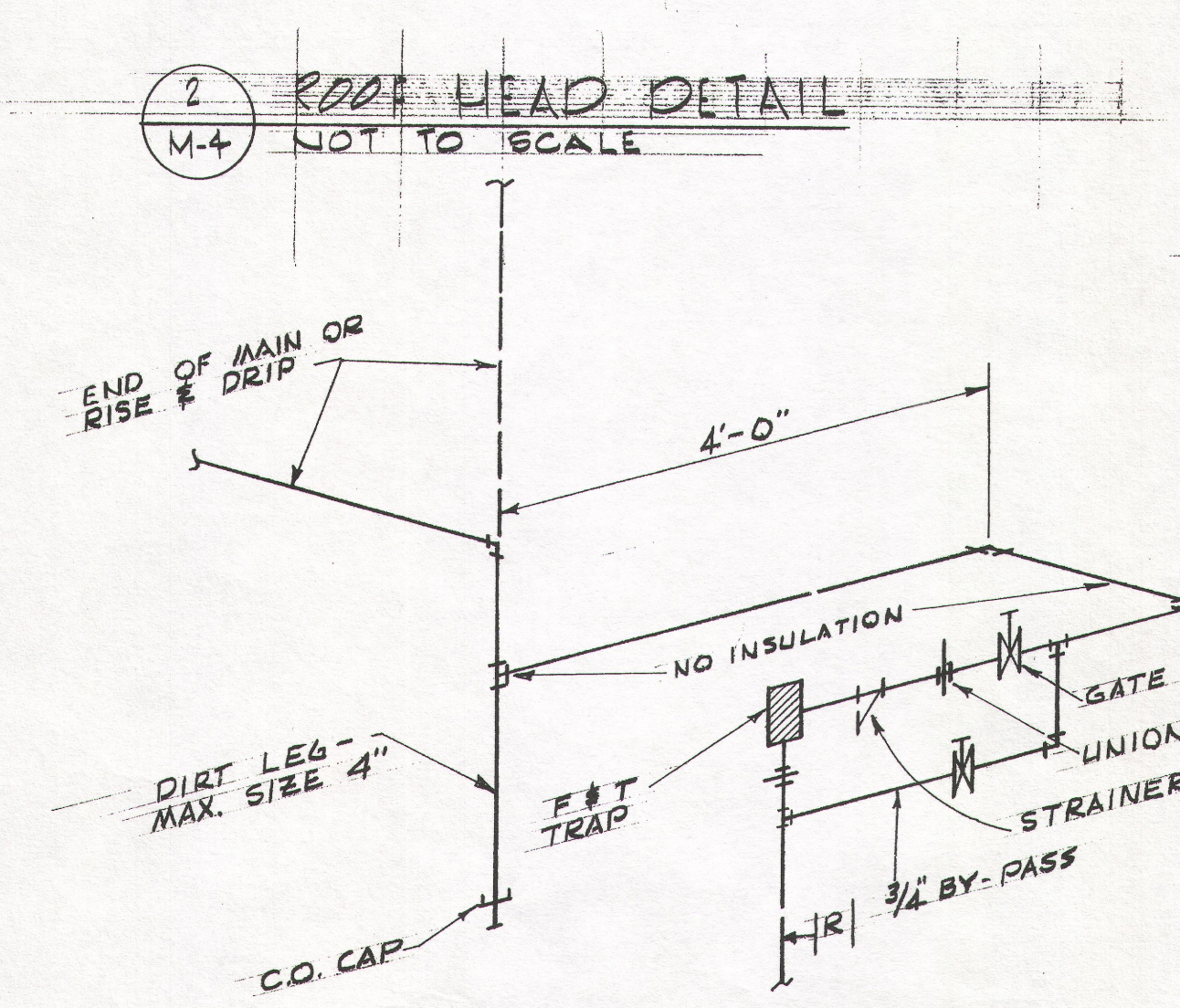
7 CARBON MONOXIDE EXHAUST DETAIL  
M.4 NOT TO SCALE.



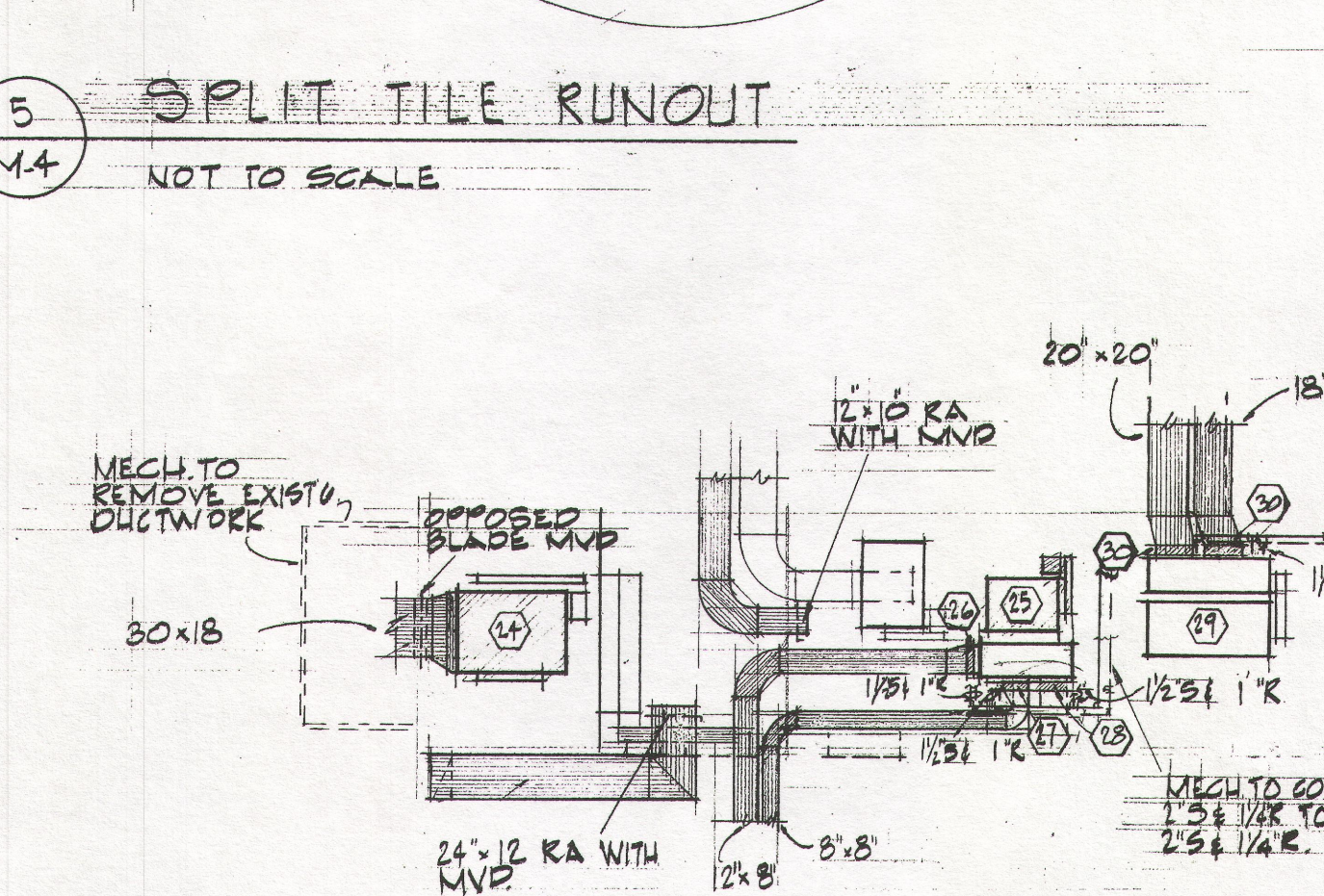
11 SECTION @ DRYING ROOM  
M.4 1/2" = 1'-0"



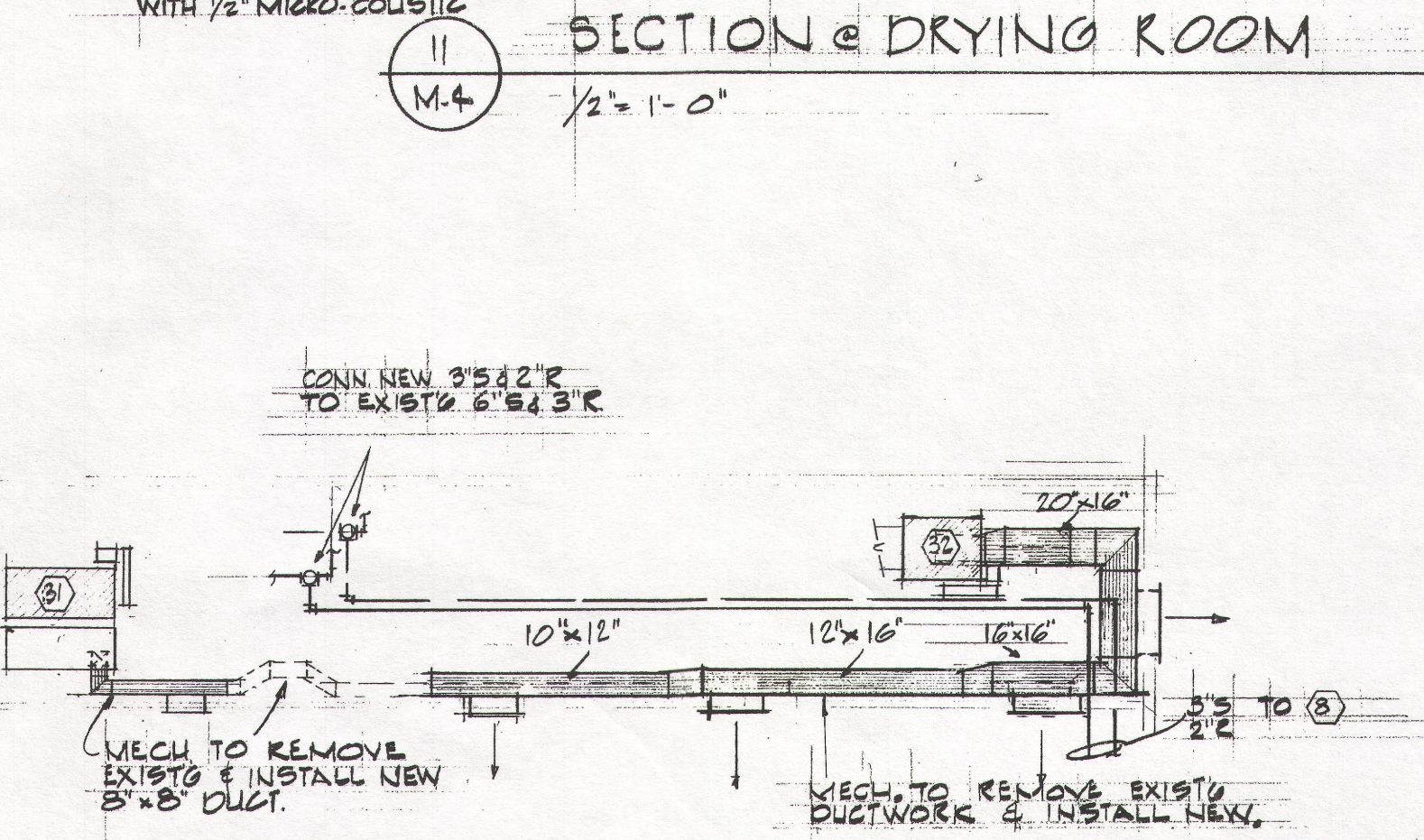
17 SECTION  
M.4 NOT TO SCALE.



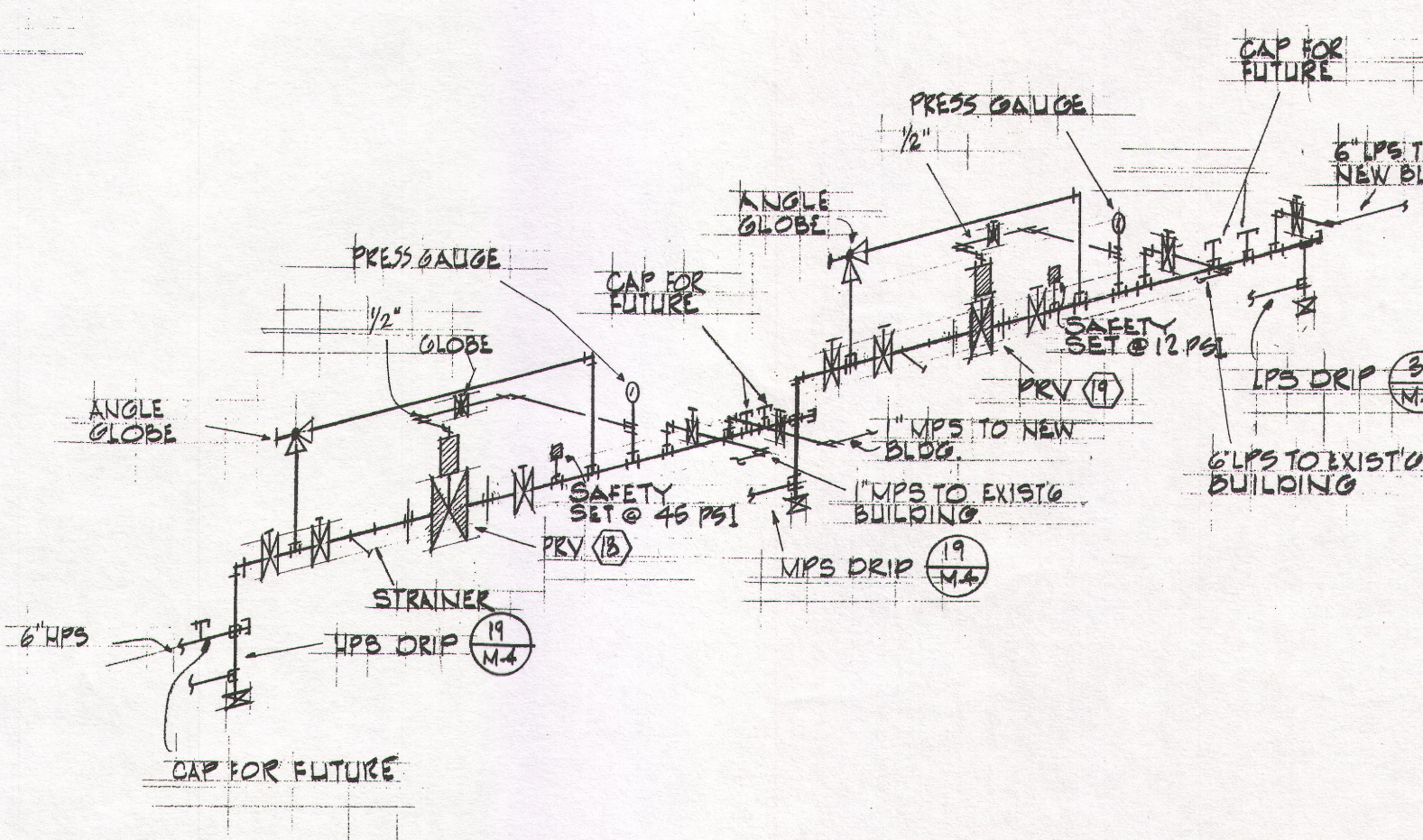
3 LOW PRESSURE DRIP DETAIL  
M.4 DIAGRAM TIC.



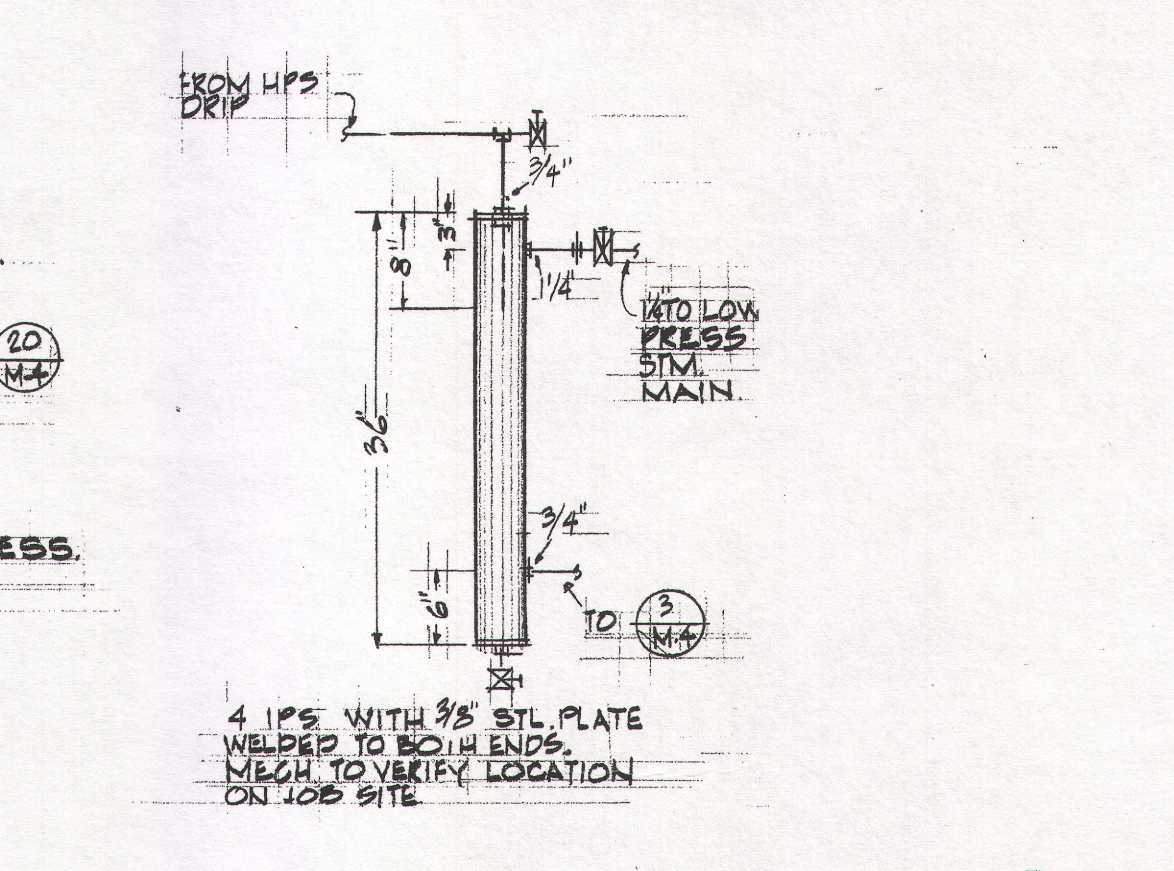
12 EXISTING FAN ROOM REMODEL  
M.4 1/8" = 1'-0"



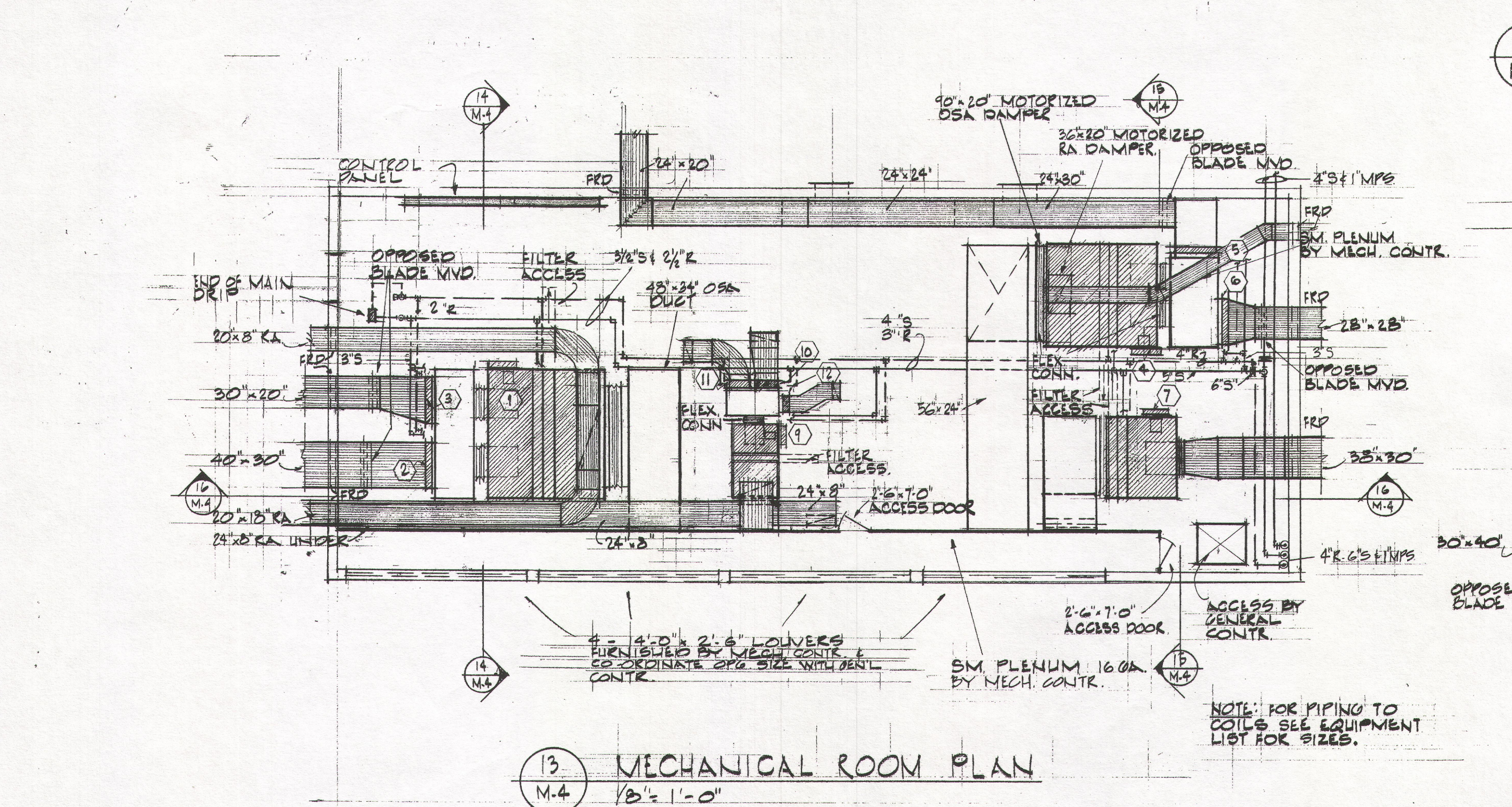
18 PRESSURE REDUCING STATION DETAIL  
M.4 NOT TO SCALE.



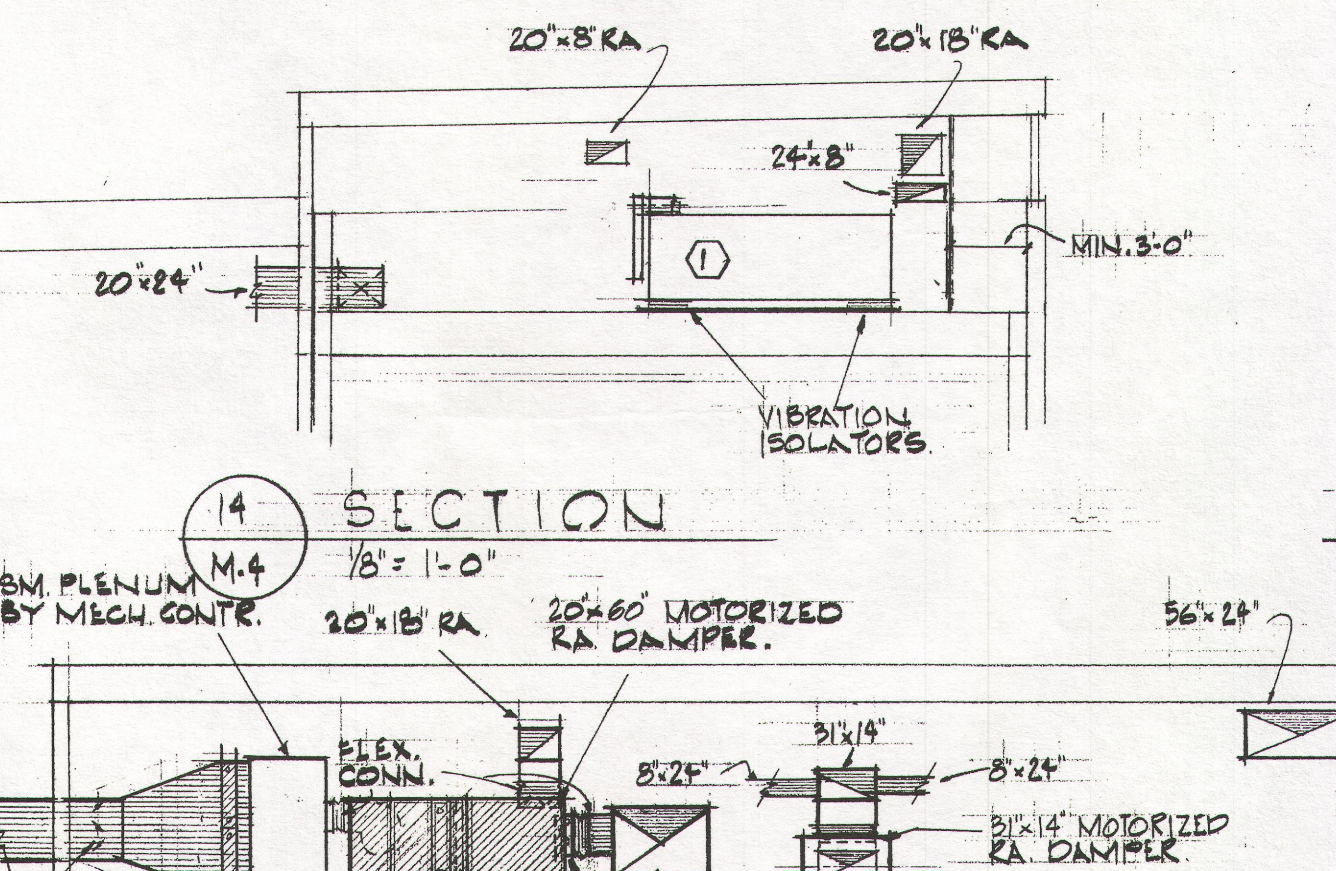
19 HPS & NPS DRIP DETAIL  
M.4 NOT TO SCALE.



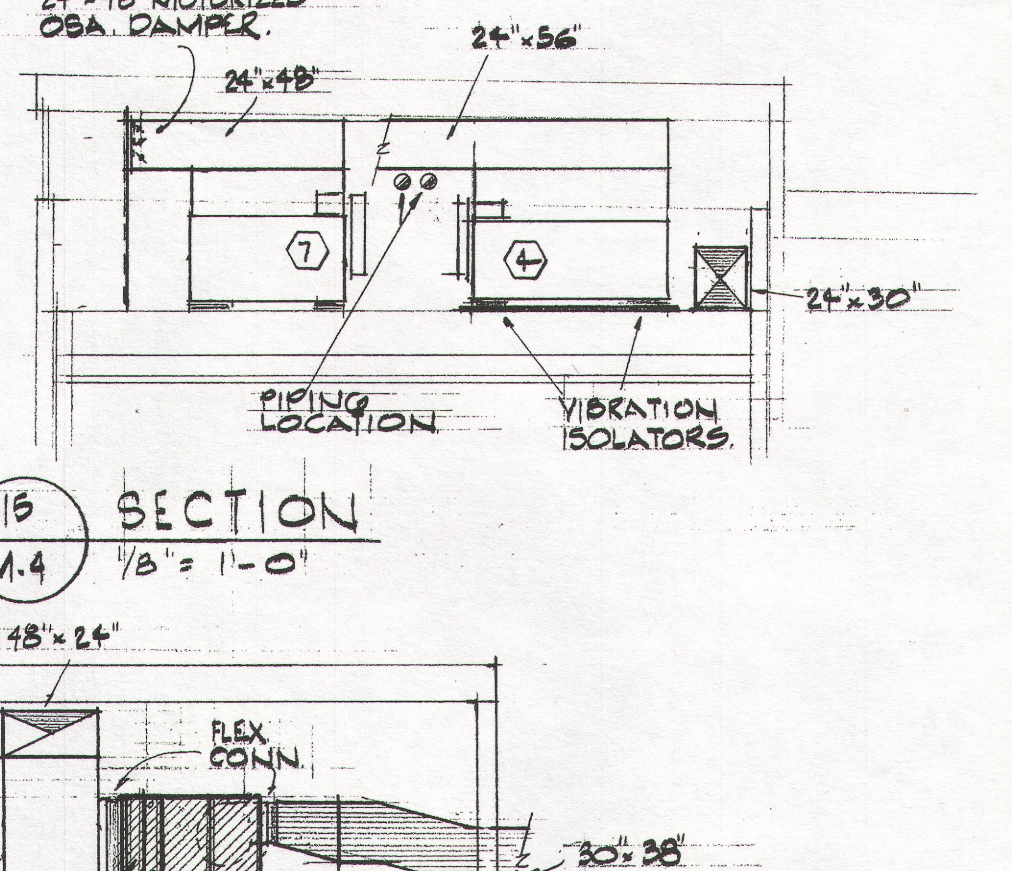
20 FLASH LEG DETAIL  
M.4 NOT TO SCALE.



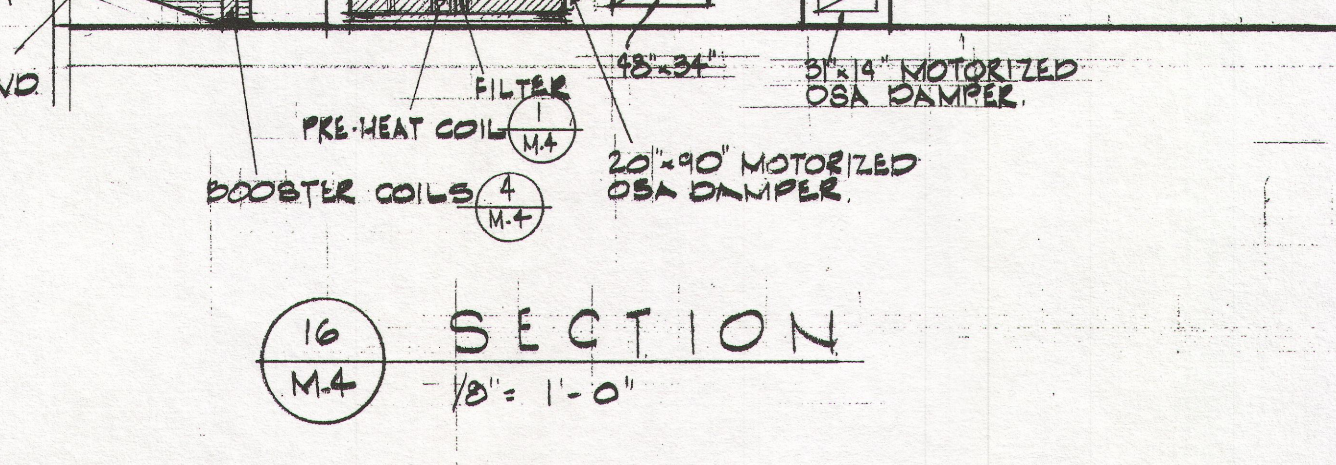
13 MECHANICAL ROOM PLAN  
M.4 1/8" = 1'-0"



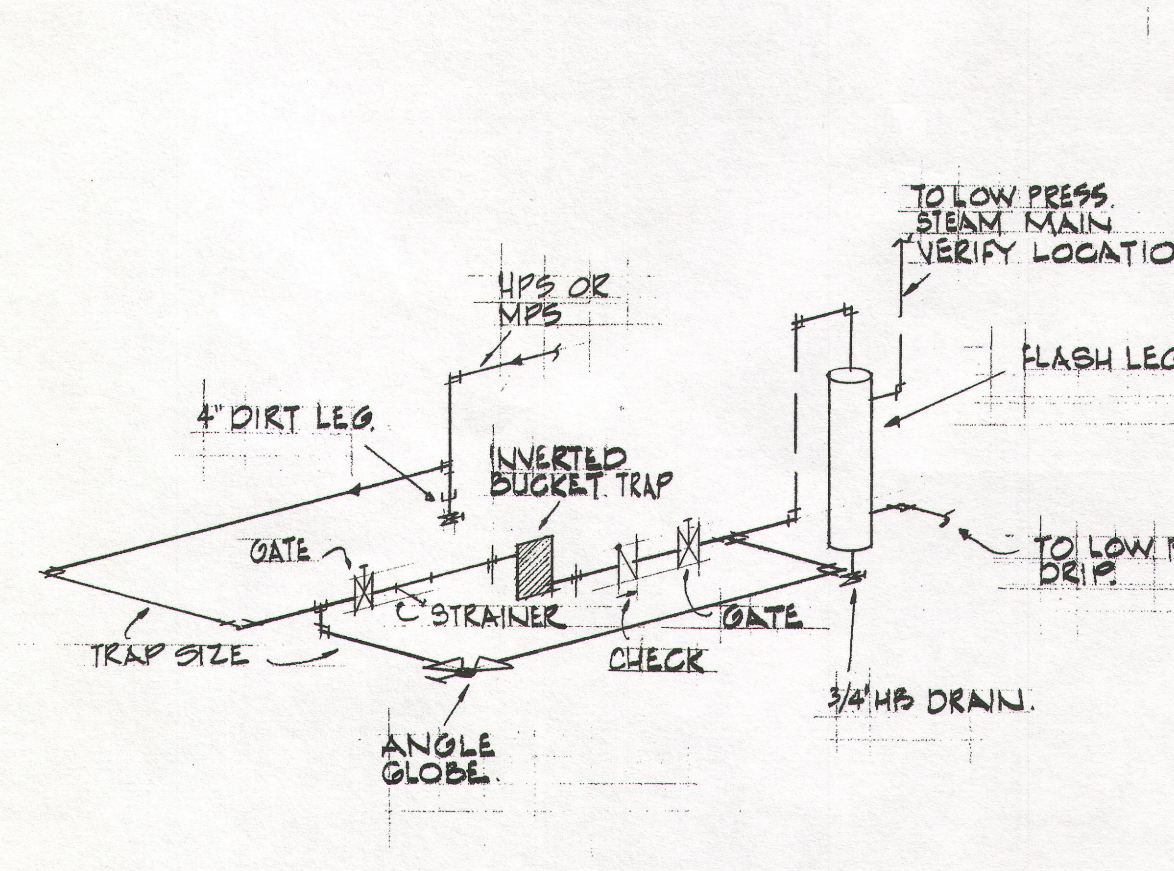
14 SECTION  
M.4 1/8" = 1'-0"



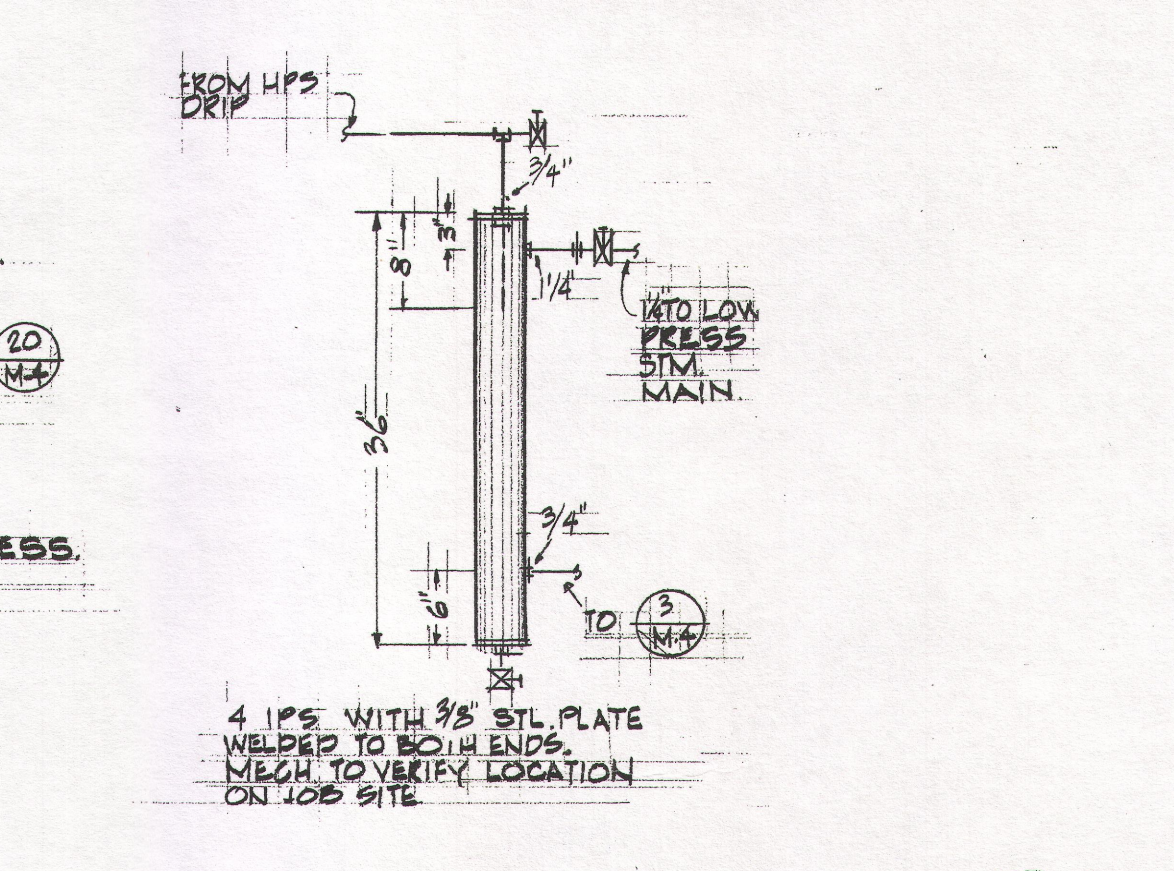
15 SECTION  
M.4 1/8" = 1'-0"



16 SECTION  
M.4 1/8" = 1'-0"



19 HPS & NPS DRIP DETAIL  
M.4 NOT TO SCALE.



20 FLASH LEG DETAIL  
M.4 NOT TO SCALE.

OREGON STATE CORRECTIONAL INSTITUTION

INDUSTRIAL VOCATIONAL UNIT #19 ADDITION  
SALEM, OREGON

DRAWING NO.	CHECKED:	DATE:
9/6/70	AS Built	11/21/1969
NO.	DATE	REVISIONS

REGISTERED ARCHITECT  
ANNAND & BOONE  
PORTLAND, OREGON  
No. 248

W. BRUCE MORRISON & ASSOCIATES  
CONSULTING ENGINEERS  
2007 S. E. ASH  
PORTLAND 14, OREGON

0 S. C. I. UNIT #19 ADDITION	678-26
MECHANICAL DETAILS	M.4 OF 4

ANNAND - BOONE  
DRYAN & HUFFSTUTTER  
ARCHITECTS & ENGINEERS  
3933 S.W. KELLY AVENUE PORTLAND, OREGON 97201