

UNIT 9

UNIT 8
KITCHEN/DINING

UNIT 7
CLASSROOMS

1987 Equip. Sub. Number	Area	Steam Cap.	Line Size	Temp Control Valve	F&T Trap
1	REHEAT	430	2"	1 1/2"	1 1/2"
2	REHEAT	312	2 1/2"	1 1/2"	1 1/2"
3	REHEAT	368	1 1/2"	1 1/2"	1 1/2"
4	REHEAT	145	2"	1 1/2"	1 1/2"
5	REHEAT	180	2"	1 1/2"	1 1/2"
6	REHEAT	207	2"	1 1/2"	1 1/2"
7	REHEAT	366	2 1/2"	1 1/2"	1 1/2"
8	REHEAT	179	1 1/2"	1 1/2"	1 1/2"
9	HAV	52	1 1/4"	1 1/2"	3/4"
10	HAV	78	1 1/2"	1 1/2"	1"
11	HAV	120	2"	1 1/2"	1 1/2"
12	HAV	200	2 1/2"	1 1/2"	1 1/2"
13	HAV	247	2"	1 1/2"	1"
14	HAV	37	1 1/2"	1 1/2"	1 1/2"
15	HAV	108	1 1/2"	1 1/2"	1"

NOTE: Provide and install (2) end of main DTA's in mechanical room - verify additional traps are in line with unit. Provide and install at DTA's for end of main, steam, and equipment located in penthouse level of unit 19.

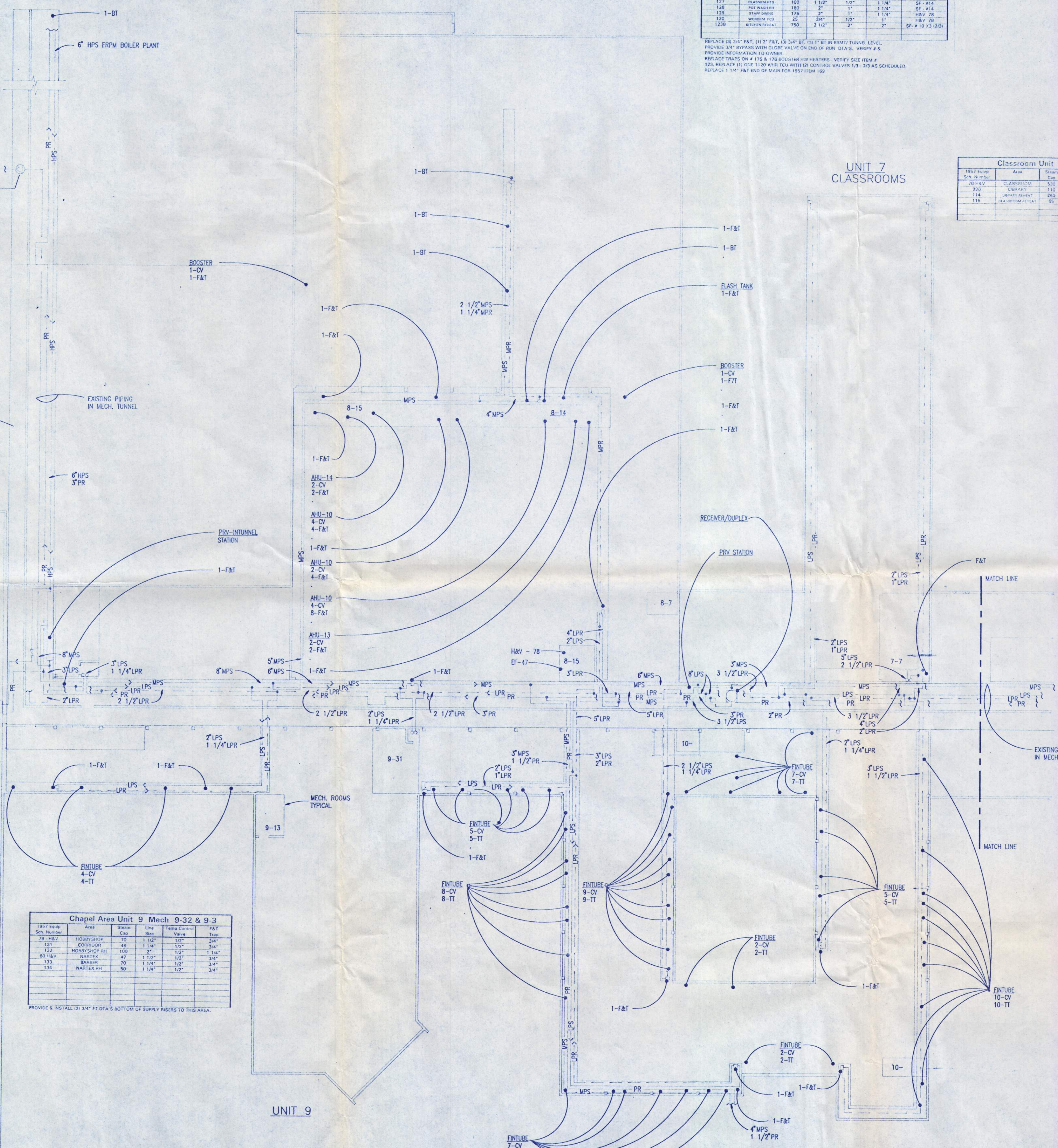
1987 Equip. Sub. Number	Area	Steam Cap.	Line Size	Temp Control Valve	F&T Trap
298	HAV'S BOOSTER	33	1 1/2"	1 1/2"	1"
297	BOILER	17	1 1/2"	1 1/2"	1"
296	CLASSROOM	85	1 1/2"	1 1/2"	1"
295	ELECTROMECH	154	1 1/2"	1 1/2"	1 1/4"
1A	AUDIO SHOP HAV	430	2 1/2"	1 1/2"	1 1/2"
1B	AUDIO SHOP HAV	207	2"	1 1/2"	1 1/2"
2A	AUDIO SHOP HAV	234	2 1/2"	1 1/2"	1 1/2"
2B	AUDIO SHOP HAV	186	2"	1 1/2"	1 1/2"
3	SMALL EQUIP	195	2"	1 1/2"	1 1/2"
4A	BOOTH HAV	363	2 1/2"	1 1/2"	1 1/2"
4B	BOOTH HAV	178	2"	1 1/2"	1 1/2"
5	WELDRING SHOP	280	2"	1 1/2"	1 1/2"
6	BOOTH HAV	314	2 1/2"	1 1/2"	1 1/2"
7A	SPRAY BOOTH	430	2 1/2"	1 1/2"	1 1/2"
7B	SPRAY BOOTH	180	2"	1 1/2"	1 1/2"
8A	SPRAY BOOTH	341	2 1/2"	1 1/2"	1 1/2"
8B	SPRAY BOOTH	181	2"	1 1/2"	1 1/2"
10	CLASS ROOM	54	1 1/2"	1 1/2"	1"
11	CLASSROOM	43	1 1/2"	1 1/2"	1"
12	BOOSTER	22	1 1/2"	1 1/2"	1"

NOTE: Remainder of Existing. Verify numbers and sizes of all traps. DTA, within unit 19. Provide and install at DTA's for end of main, steam, and equipment located in penthouse level of unit 19.

1987 Equip. Sub. Number	Area	Steam Cap.	Line Size	Temp Control Valve	F&T Trap
78	STEAM DRUM	105	1 1/2"	1 1/2"	1 1/2"
116	DRUM HEATING	240	2"	1 1/2"	1 1/2"
117	DRUM HEATING	640	2 1/2"	1 1/2"	1 1/2"
118	DRUM HEATING	240	2"	1 1/2"	1 1/2"
119	DRUM HEATING	640	2 1/2"	1 1/2"	1 1/2"
121	REC. REC. PUMP	200	2"	1 1/2"	1 1/2"
122	DRUM HEATING	120	1 1/2"	1 1/2"	1 1/2"
123A	DRUM HEATING	430	2 1/2"	1 1/2"	1 1/2"
123B	DRUM HEATING	310	2 1/2"	1 1/2"	1 1/2"
124	DRUM HEATING	365	2 1/2"	1 1/2"	1 1/2"
125	DRUM HEATING	120	1 1/2"	1 1/2"	1 1/2"
126	DRUM HEATING	120	1 1/2"	1 1/2"	1 1/2"
127	DRUM HEATING	100	1 1/2"	1 1/2"	1 1/2"
128	DRUM HEATING	180	2"	1 1/2"	1 1/2"
129	DRUM HEATING	179	1 1/2"	1 1/2"	1 1/2"
130	DRUM HEATING	35	3/4"	1 1/2"	1"
130B	DRUM HEATING	760	2 1/2"	1 1/2"	1 1/2"

REPLACE (3) 3/4" F&T (1) 2" F&T, (1) 3/4" BT, (1) 3/4" BT, (1) 1" BT IN BOOTH LEVEL. PROVIDE (2) BYPASS WITH GLOBE VALVE ON END OF MAIN, DTA'S, VERIFY # & PROVIDE INFORMATION TO OWNER. REPLACE TRAPS ON # 128 & 129 (BOOTH) WITH HEATERS - VERIFY SIZE ITEM # 123. REPLACE (1) (2) 1/2" F&T WITH (2) CONTROL VALVES 1/2" - 2/3" AS SCHEDULED. REPLACE (1) 1 1/2" F&T END OF MAIN FOR BOOTH ITEM 129.

1987 Equip. Sub. Number	Area	Steam Cap.	Line Size	Temp Control Valve	F&T Trap
109	CLASSROOM	520	2"	1 1/2"	1 1/2"
110	CLASSROOM	110	1 1/2"	1 1/2"	1 1/2"
114	CLASSROOM	260	2"	1 1/2"	1 1/2"
115	CLASSROOM	65	1 1/2"	1 1/2"	1"



1987 Equip. Sub. Number	Area	Steam Cap.	Line Size	Temp Control Valve	F&T Trap
191	HAV	70	1 1/2"	1 1/2"	3/4"
192	COOPER	46	1 1/4"	1 1/2"	3/4"
193	BOOTH HAV	100	2"	1 1/2"	1 1/2"
194	NATEX	47	1 1/2"	1 1/2"	3/4"
195	BARBER	30	1 1/4"	1 1/2"	3/4"
196	NATEX RH	50	1 1/4"	1 1/2"	3/4"

PROVIDE & INSTALL (2) 3/4" F&T DTA'S BOTTOM OF SUPPLY RISERS TO THIS AREA.

1993 Equip. Sub. Number	Area	Steam Cap.	Line Size	Temp Control Valve	F&T Trap
6	EXISTING OFFICE	18	1"	1 1/2"	3/4"
7	EXISTING OFFICE	25	1 1/2"	1 1/2"	1"
8	EXISTING OFFICE	12	1"	1 1/2"	3/4"
9	EXISTING OFFICE	16	1"	1 1/2"	3/4"

(1) 3/4" END OF MAIN DTA IN 9-13 PROVIDE & INSTALL.

1987 Equip. Sub. Number	Area	Steam Cap.	Line Size	Temp Control Valve	F&T Trap
182	CONF. RM	105	2"	1 1/2"	1 1/2"
183	BOOTH HAV	100	2"	1 1/2"	1 1/2"
184	PASSAGE	300	2 1/2"	1 1/2"	1 1/2"

REPLACE (5) 1" F&T TRAPS (END OF MAIN) VERIFY NUMBER OF TRAPS AND REPLACE ANY ADDITIONAL FOUND.

FLOOR PLAN - HVAC
SCALE: 1/16" = 1'-0"

NO.	DESCRIPTION OF REVISION	DATE

Bouillon Christopherson & Schairer Inc.
Seattle Sunnyvale Portland

5255 S.W. Meadows Rd.
Suite 264
Lake Oswego, Oregon 97035
ISO31 694-4873
FAX: 694-4875

O.S.C.I.
OREGON STATE CORRECTIONAL INSTITUTION
ENERGY PROJECT PH. 3
SALEM, OREGON

PIPING and DIAGRAMS EXISTING

DESIGN RP	SHEET NUMBER
DRAWN SCB	M2
CHECKED RP	
APPROVED WAG	
DATE 8/19/92	
SCALE 1/16" = 1'	JOB NO. 3-92085-01

SEAL
REGISTERED PROFESSIONAL ENGINEER
William A. Schairer
OREGON
JULY 8, 1988
W. ALAN GOLD

NW 5156 03.01
 08-13-1992 16:10
 C:\PR\USCT\ME

1987 Equip. Sch. Number	Area	Steam Cap.	Line Size	Temp Control Value	F&T Trap	CFM
100	PREHEAT	37	1"	112°	3/4"	10000
101	CHILLER	430	2 1/2"	1 1/2"	1 1/4"	12000
102	CHILLER	360	2"	1 1/2"	1 1/4"	10000
1987-104	MECH. ROOM	200	2"	1 1/2"	1 1/4"	ROOM 5-3
62-103	CHILLER	360	2"	1 1/2"	1 1/4"	ROOM 5-3
62-103	CHILLER	360	2"	1 1/2"	1 1/4"	ROOM 5-3
106	CONDENSATE AREA	130	1 1/2"	3/4"	1 1/4"	

SF-#6 (5-1)
LOCATED IN (5-3) 6000 CFM - SHP -2 SPEED

SF-#5 (5-2)
LOCATED IN (5-24) 10,000 CFM - SHP -2 SPEED

UNIT 5

Housing Unit 4 Mech 4-1						
1987 Equip. Sch. Number	Area	Steam Cap.	Line Size	Temp Control Value	F&T Trap	CFM
99A	HOUSING	500	2 1/2"	1 1/2"	2"	2100
99B	HOUSING	1000	4"	2"	2"	2100
151-CH	DAY RM	97	2"	1/2"	1"	

SF-#4 (4-1)
16,000 CFM 1 1/2" SP 7 1/2 HP -2 SPEED

SF-#26 (4-3)
15,500 CFM - SHP -2 SPEED

Housing Unit 11 Mech 11-17						
1987 Equip. Sch. Number	Area	Steam Cap.	Line Size	Temp Control Value	F&T Trap	CFM
1987	HOUSING	500	2 1/2"	1 1/2"	2"	2100
2.8	HOUSING UNIT	1000	4"	2"	2"	2100

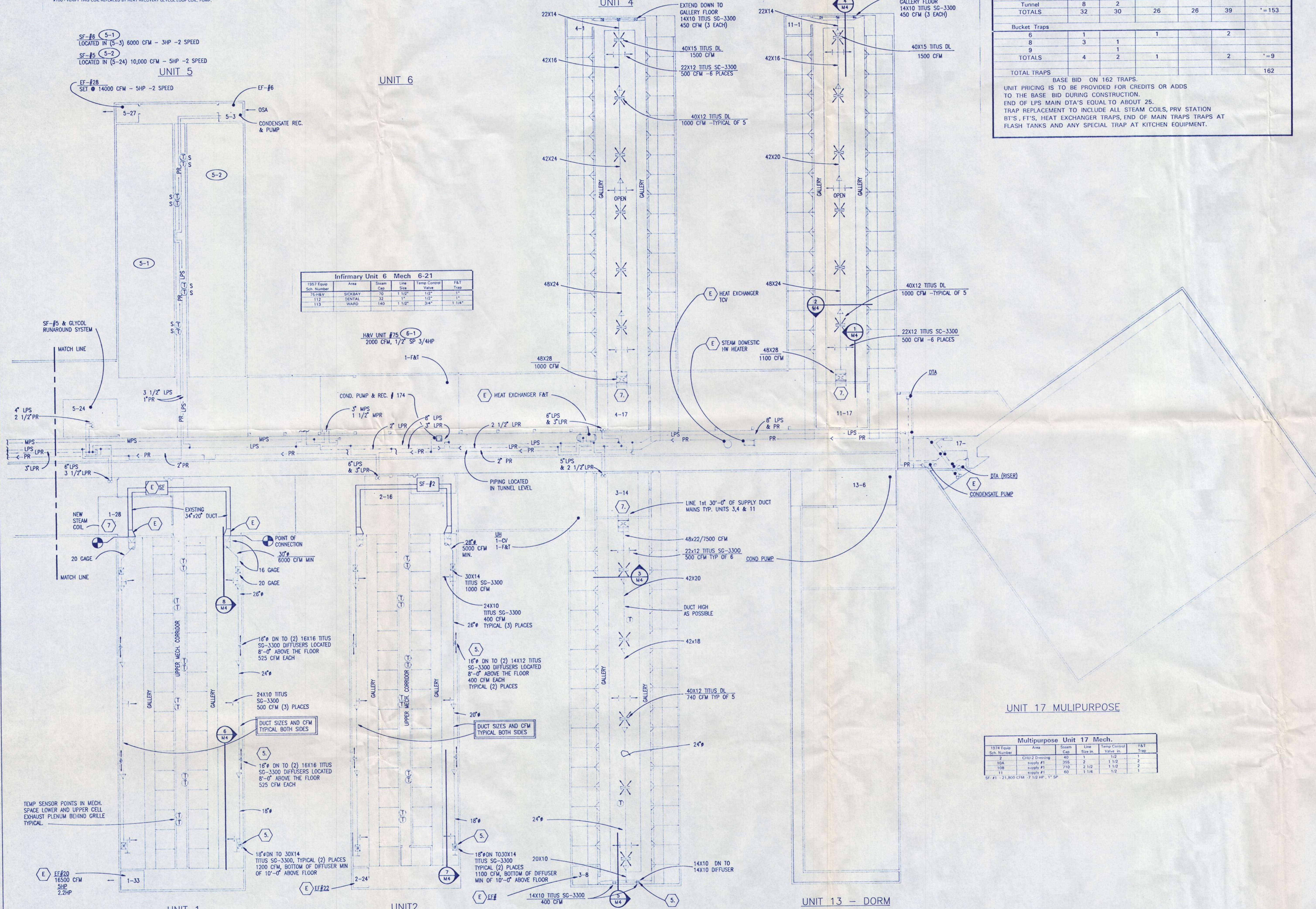
REPLACE 2 1/2" TRAP ITEM #11 GENERATOR AND ANY OTHER F&T OR BUCKET TRAPS WITH IN THIS AREA.
REMOVE EXISTING SINGLE TCV 1500 AHP & REPLACE WITH 2 TCV AS LISTED
INCLUDE ISOLATION VALVES, STRAINERS, PRESSURE GAUGES, UNIONS ETC.
REPLACE 1 1/2" F&T ON CONVECTOR #8
REPLACE ANY F&T'S IN THIS SECTION OF TUNNEL.

SF #1 - 18,500 CFM - 7 1/2 HP

STEAM TRAP SCHEDULE						
Building Unit No.	TRAP SIZE					QUANTITY
	3/4"	1"	1 1/4"	1 1/2"	2"	
Float and Thermostatic						
1	2	3		2	2	
2		2		2	2	
3		1			2	
4		1			2	
5	1		3	1	2	
6	1	1	2	1	1	
7		1	1		1	
8	5	2	7	5	10	
9	10	2	1			
10	2	1	1	1	2	
11		1	1		2	
13	1	1	1	2	2	
19	1	10	10	12	11	
Multipurpose (17)		1	2		2	
Tunnel	8	2				
TOTALS	32	50	26	26	39	*=153
Bucket Traps						
6	1		1		2	
8	3	1				
9						
TOTALS	4	2	1		2	*=9
TOTAL TRAPS						
162						

* BASE BID ON 162 TRAPS.
UNIT PRICING IS TO BE PROVIDED FOR CREDITS OR ADDS TO THE BASE BID DURING CONSTRUCTION.
END OF LPS MAIN DTA'S EQUAL TO ABOUT 25.
TRAP REPLACEMENT TO INCLUDE ALL STEAM COILS, PRV STATION BT'S, FIT'S, HEAT EXCHANGER TRAPS, END OF MAIN TRAPS TRAPS AT FLASH TANKS AND ANY SPECIAL TRAP AT KITCHEN EQUIPMENT.

- NOTES:
- TYPICAL ALL LEVELS: DO ALL TCV, STEAM TRAP, AND PIPING DEMOLITION REQUIRED TO REPLACE ALL TUNNEL LEVEL FLOAT AND THERMOSTATIC (F&T) TRAPS, BUCKET (BT) TRAPS, ALL HEATING COIL TRAPS, ALL STEAM END OF MAIN OR DTA'S AT RISERS, AND ALL TRAPS AT EQUIPMENT, HEAT EXCHANGERS, HW HEATERS, FLASH TANKS, ETC.
 - REPLACE ALL BT TRAPS AND F&T TRAPS IN THE TUNNEL LEVEL. VERIFY EXACT NUMBER AND SIZE. TO INCLUDE END OF MAINS, PRV HEADER TRAPS, EQUIPMENT TRAPS ETC. END OF MAIN TRAPS TO INCLUDE BY-PASS PIPING WITH GLOBE VALVE. REPLACE ALL LEAKING ISOLATION STEAM GATE VALVES. WHERE POSSIBLE REPLACE TRAP ONLY BUT WHEN REQUIRED DUE TO LEAKAGE REPLACE ISOLATION VALVES. REPLACE ANY PIPING SECTIONS THAT ARE PLUGGED. TYPICAL ALL AREAS.
 - REPLACE ALL STEAM COIL F&T TRAPS AND END OF MAIN TRAPS IN MECHANICAL ROOMS SERVING UNITS 1,2,3,4,5,6,7,8,9 & MISC. AREAS, CHAPEL, GARDNER SHOP, HOBBY UNIT, UNIT 10,11,13 & 19. APPROXIMATE NUMBER AND SIZES ARE SHOWN ON DRAWING BUT VERIFICATION MUST BE MADE BEFORE BID OR CONSTRUCTION BEGINS.
 - ALL TRAPS FOR L.P.S. STEAM COILS TO BE SIZED AT 1.5 TO 1 AND AS RECOMMENDED BY TRAP MANUF. TRAP SIZING FOR OTHER TYPES OF EQUIPMENT TO BE AS RECOMMENDED BY TRAP MANUF. L.P.S. END OF MAIN TRAPS ARE TO BE SIZED WITH A 1 PSI DIFFERENTIAL UNLESS NOTED OTHERWISE. ALL L.P.S. TRAPS TO BE SIZED WITH A 20 PSI DIFFERENTIAL.
 - DUCT DROPS ON OUTSIDE WALLS TO BE LOCATED BETWEEN WINDOWS AND MUST BE APPROVED BY O.S.C.I. ENGR. STAFF BEFORE INSTALLATION.
 - REMOVE EXISTING SOUND TRAPS IN UNITS 3, 4 AND 11 WHERE 4x6" GRILLES ARE BEING REMOVED AND DUCTS ADDED - VERIFY EXACT LOCATION OF TRAPS BEFORE REMOVAL.
 - PROVIDE AND INSTALL A NEW STEAM COIL IN MISSING COIL LOCATION ON PREHEAT SIDE OF UNIT #1 AIR HANDLER. MATCH EXISTING COIL FOR SIZE, 285 MBH, 3000B/HR, SP30 PROVIDE PIPING, ISOLATION VALVES, F&T TRAP (DTA), SHEETMETAL # REQUIRED. TOTAL STEAM FOR BOTH COILS EXISTING AND NEW IS 6000/HR. SUPPORT NEW COIL INDEPENDENTLY FROM EXISTING.
 - ANY SHUT DOWN OF STEAM, CW, HW, OR HEATING WATER IS TO BE COORDINATED FIRST WITH O.S.C.I. ENGR. STAFF.
 - SEE NOTES (2) (3) (4) (8). REPLACE ALL STEAM TRAPS AS NOTED PROVIDE COST INFORMATION FOR UNIT PRICING TO OWNER DURING BID PERIOD, AND AFTER APPROVAL TO REPLACE ANY DAMAGED ISOLATION GATE VALVES, UNIONS, STRAINERS, SECTIONS OF PIPE, INSULATION, CHECK VALVES ETC.
 - REPLACE ALL CONTROL DAMPER ACTUATORS IN UNITS 3-1, 4-1, 7-6, 8-1, 10-1, 11-1, 17-1, 19A, 19B, 19C, 19E. REPLACE LINKAGE IF REQUIRED, REPLACE DAMPER IF DEFECTIVE, COST OF DAMPERS BASED ON UNIT PRICE PROVIDED BEFORE BID.
 - VERIFY NUMBER AND LOCATIONS AND REPLACE ANY ADDITIONAL DAMPER ACTUATORS, FOUND IN UNIT MECH. RMS. SHOWN ON FLOOR PLAN SHEETS. REPLACE ANY DEFECTIVE LINKAGE OR DAMPERS, PER UNIT PRICING.
 - CONTROL SYSTEMS AS NOTED ARE TO BE PROVIDED FOR UNITS 1,2,3,4,5,6,7,8,9,10,11,13,17 AND 19. WITH LOCAL CONTROL IN MECH RM. AND CONTROL AT CENTRAL WORKSTATION.
 - ALL TUNNEL LEVEL L.P.S., M.P.R., H.P.R., AND P.R. ARE TO BE INSULATED. LENGTH AND PIPE SIZE TAKEOFF REQUIRED BEFORE BID. SAVE REQUIREMENTS FOR P.R. FROM UNIT 5, L.P.R. FROM UNIT 7, L.P.R. FROM UNIT 9, L.P.R. FROM UNIT 10, L.P.R. & P.R. FROM UNIT 17 & 19. REPLACE ANY INSULATION REMOVED FROM EQUIPMENT OR STEAM PIPING DURING TRAP REPLACEMENT. PROVIDE UNIT PRICING FOR 3/4", 1", 1 1/4", 1 1/2", 2", 2 1/2", 3", PIPING AND REPORT OTHER AREAS WHERE INSULATION COULD BE PROVIDED.
 - A. UNITS ON MECH. DWGS DO NOT SHOW EXISTING SF,EF, HAV UNITS OR CUH, LOCATIONS, IN GENERAL MECH. RMS LOCATIONS (APPROX) ARE SHOWN.
B. DRAWINGS ARE NOT TO BE USED FOR SCALING OF PIPE OR DUCT RUNS.
C. ALL PIPE SHOWN ON DRAWINGS IS EXISTING, PIPE SIZES IF SHOWN ARE TO BE MODIFIED BEFORE BID.
D. NEW DUCTWORK IS REQUIRED IN UNITS 1,2,3,4 & 11.
 - REMOVE ALL STEAM TEMP. CONTROL VALVES FROM EXISTING SUPPLY FANS, HAV UNITS AND CABINET UNIT HEATERS EXISTING IN BUILDINGS 1,2,3,4,5,6,7,8,9,10,11,13,17 AND 19 AND REPLACE WITH NEW. PROVIDE UNIT PRICING INFORMATION FOR ALL COMPONENTS, INCLUDING ISOLATION VALVES, UNIONS, PIPE ETC. COST OF CONTROL VALVES NOTED ON THESE DWGS. IS TO BE INCLUDED IN BID.
 - NOT ALL PIPING, TRAPS, VALVES, EQUIPMENT ETC. ARE SHOWN ON DRAWINGS. A VALVE, TRAP, PIPE LENGTH AND SIZE SURVEY IS TO BE MADE BEFORE BID PRICING IS PUT TOGETHER.
 - ALL DIFFUSERS TO HAVE VOLUME DAMPER, HEAVY GAGE WITH LOCKING QUADRANT, AND END BEARINGS. IN AREAS WHERE DAMPERS CAN NOT BE INSTALLED, PROVIDE OPPOSED BLADE DAMPERS WITH GRILLES.
 - ALL BRANCH FITTINGS FROM ROUND DUCT MAINS TO BE SHOP BUILT AND WELDED.
 - DUCTS ARE TO BE SUPPORTED USING MIN OF 1/4" THREADED ROD AND 16 GAGE STRAP MATERIAL. RODS AND STRAPS TO BE PROVIDED ON EACH SIDE OF DUCT. VANDAL PROOF SCREWS TO BE USED ON ALL GRILLES AND ON ALL DUCTS BELOW 10'-0" ABOVE FLOORS, AND NEAR STAIRS AND CROSS-OVER GALLERIES.
HORIZONTAL DUCTS TO HAVE HANGER SUPPORT AT JOINTS WITH SPACING NO GREATER THAN 8'-0" CENTER TO CENTER. ANCHOR VERTICAL DUCT DROPS AT JOINTS, AT DISCHARGE, WITH SPACING NO GREATER THAN 3'-6" CENTER TO CENTER. FASTENERS BELOW 10'-0" IN HEIGHT TO BE VANDAL PROOF. PROVIDE FASTENER INFORMATION TO OWNER FOR REVIEW.
 - TYPICAL MECHANICAL ROOMS FOR UNITS 1,2,3,4,5,11, & 13. PROVIDE COST TO CLEAN THE MAIN SUPPLY FAN WHEEL AND HOUSING, CLEAN COILS AND COMB COILS, CLEAN MAIN EXHAUST FAN WHEEL AND HOUSING. PROVIDE PRICE TO REMOVE UNIT 1 SUPPLY FAN SHP 2 SPEED MOTOR & DRIVE AS REQUIRED WITH NEW H.E. 7 1/2 HP - 3 HP TWO SPEED MOTOR. REPLACE DRIVE NO SLEAVES TO PROVIDE STANDARD OPERATING SAFETY FACTOR. SYSTEM SP. 1.25".
 - COORDINATE ALL WORK IN THIS CONTRACT WITH THE CONTRACTOR FOR BID PACKAGE "B".



Housing Unit 1 Mech 1-28						
1987 Equip. Sch. Number	Area	Steam Cap.	Line Size	Temp Control Value	F&T Trap	CFM
89	PREHEAT	1500	1 1/2"	1 1/2"	1 1/4"	10000
91A	HOUSING	300	3"	1 1/2"	2"	12000
91B	HOUSING	1100	1 1/2"	1 1/2"	2"	10000
92	GUARD	82	1 1/4"	1/2"	1"	800
93	ASSURMENT	82	1 1/4"	1/2"	1"	800
94	REGISTRATION	82	1 1/2"	1/2"	1"	900

Housing Unit 2 Mech 2-16						
1987 Equip. Sch. Number	Area	Steam Cap.	Line Size	Temp Control Value	F&T Trap	CFM
91A	PREHEAT	400	3"	1 1/2"	2"	12000
91B	HOUSING	800	3"	1 1/2"	2"	10000
97	GUARD	82	1 1/4"	1/2"	1"	800

Housing Unit 3 Mech 3-14						
1987 Equip. Sch. Number	Area	Steam Cap.	Line Size	Temp Control Value	F&T Trap	CFM
99A	HOUSING	300	2 1/2"	1 1/2"	2"	2100
99B	HOUSING	600	3"	1 1/2"	2"	2100
151-CH	DAY RM	97	2"	1/2"	1"	

Housing Unit 13 Mech Tunnel Level Mech Rm						
1987 Equip. Sch. Number	Area	Steam Cap.	Line Size	Temp Control Value	F&T Trap	CFM
99A	HOUSING	500	2 1/2"	1 1/2"	2"	2100
99B	HOUSING	1000	4"	2"	2"	2100

NO. DESCRIPTION OF REVISION DATE

Bouillon Christofferson & Schairer Inc.
5285 S.W. Meadows Rd. Suite 264
Lake Oswego, Oregon 97035
5031 684-4673 FAX: 684-4675
Seattle Sunnyvale Portland

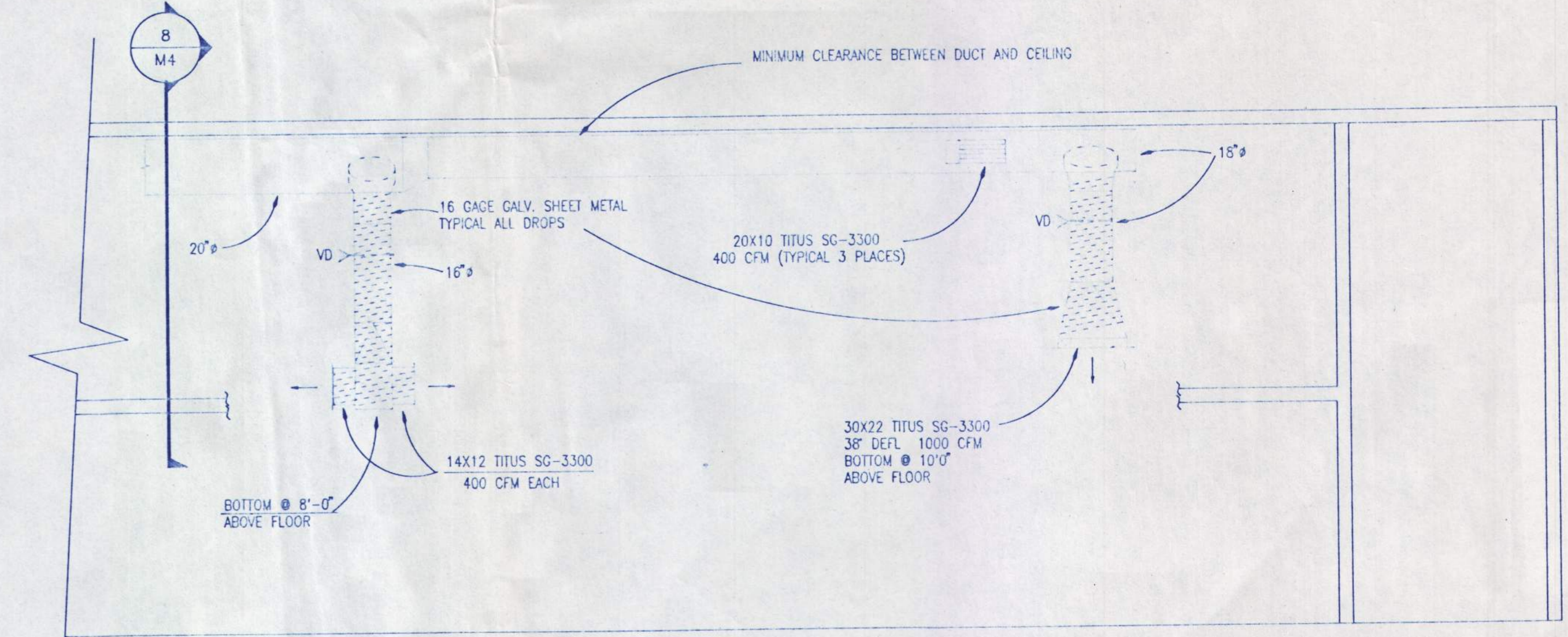
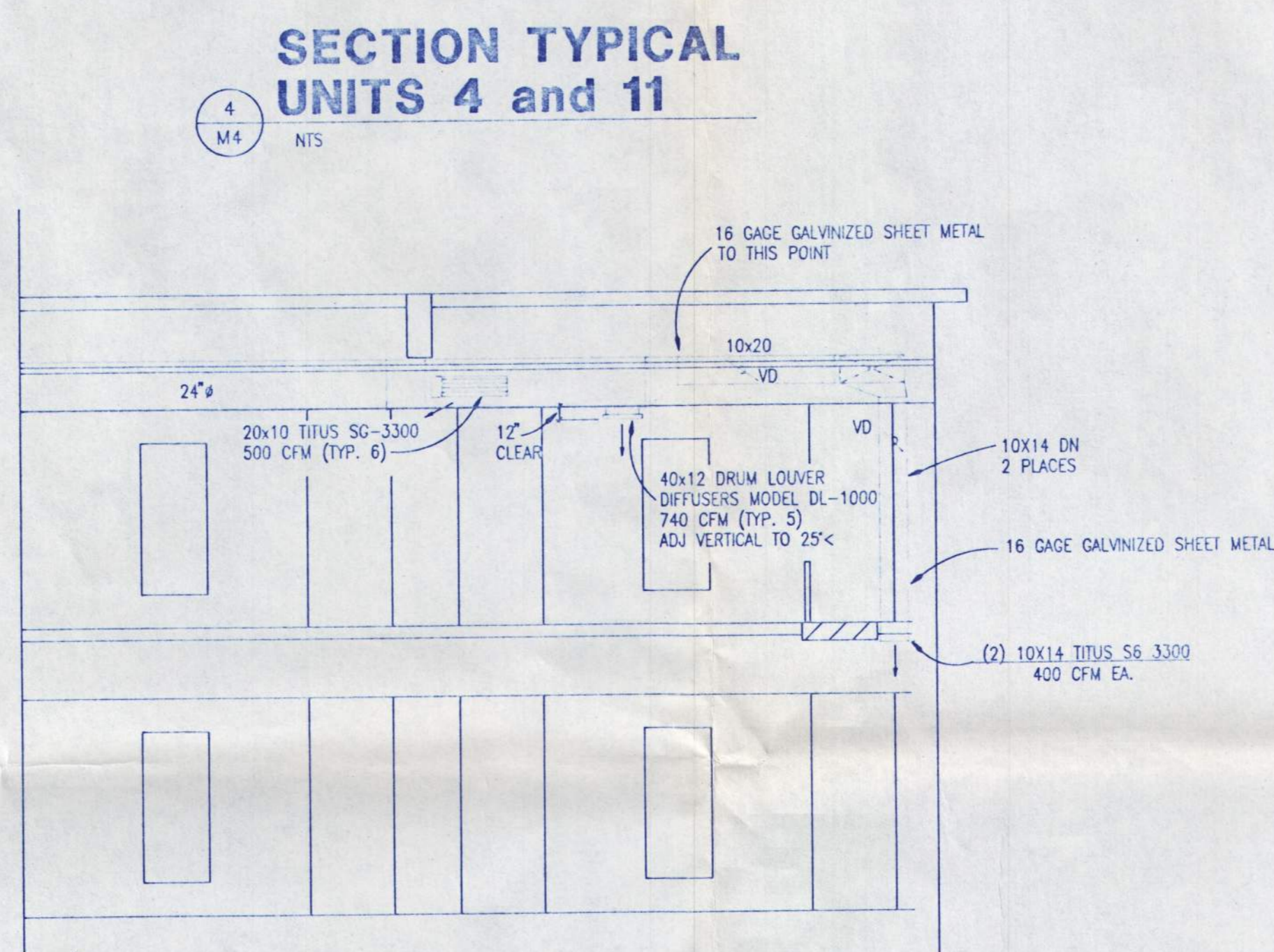
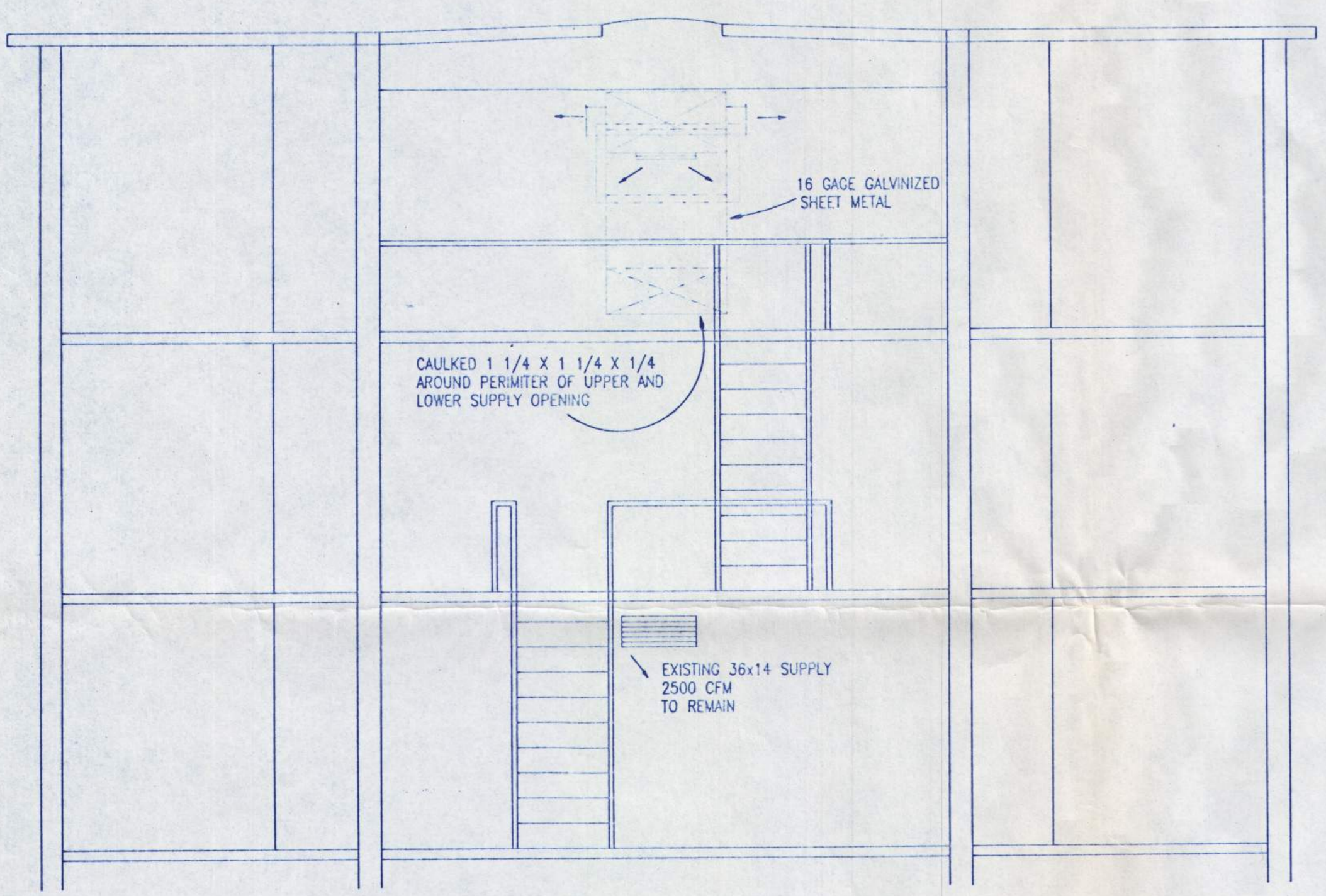
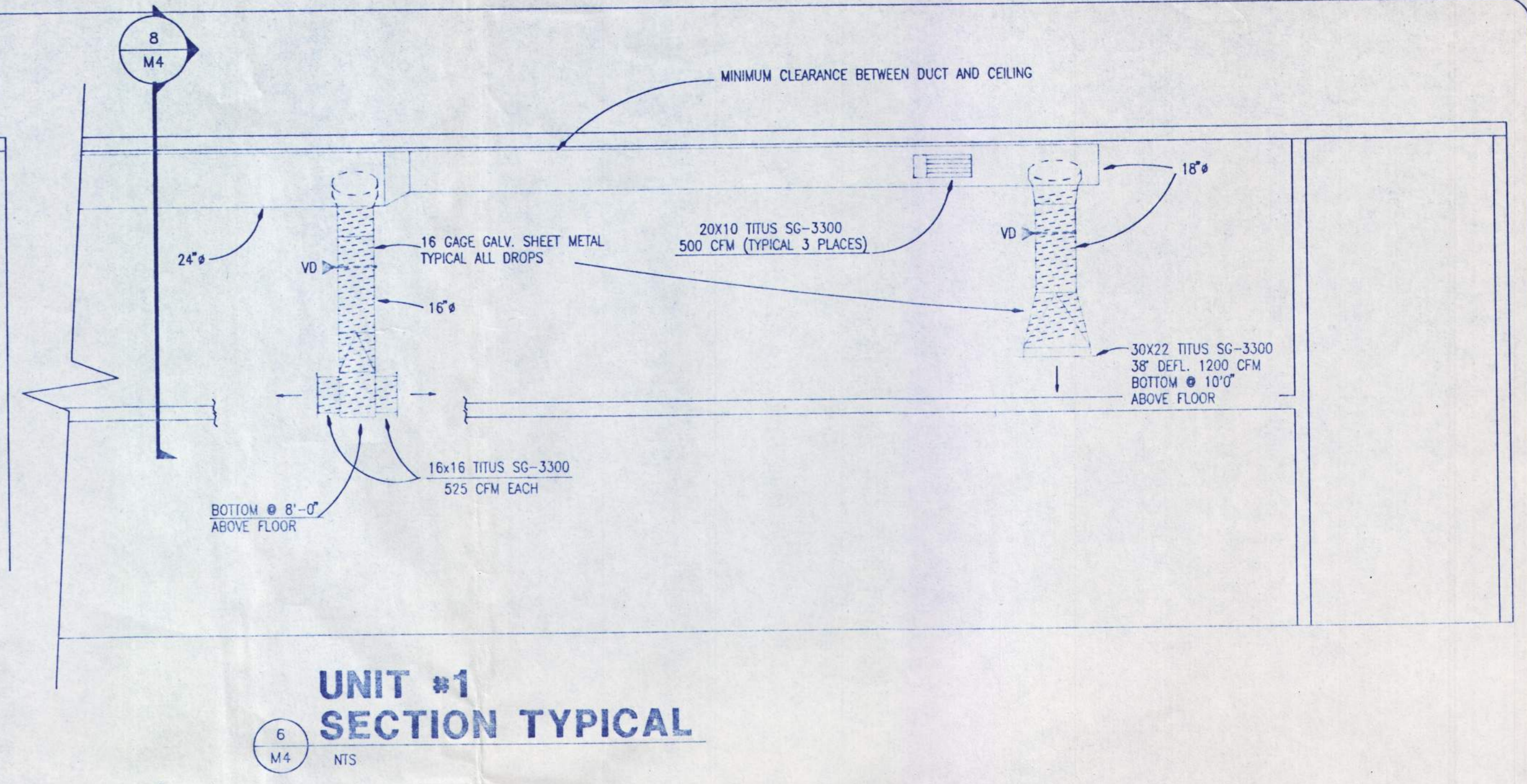
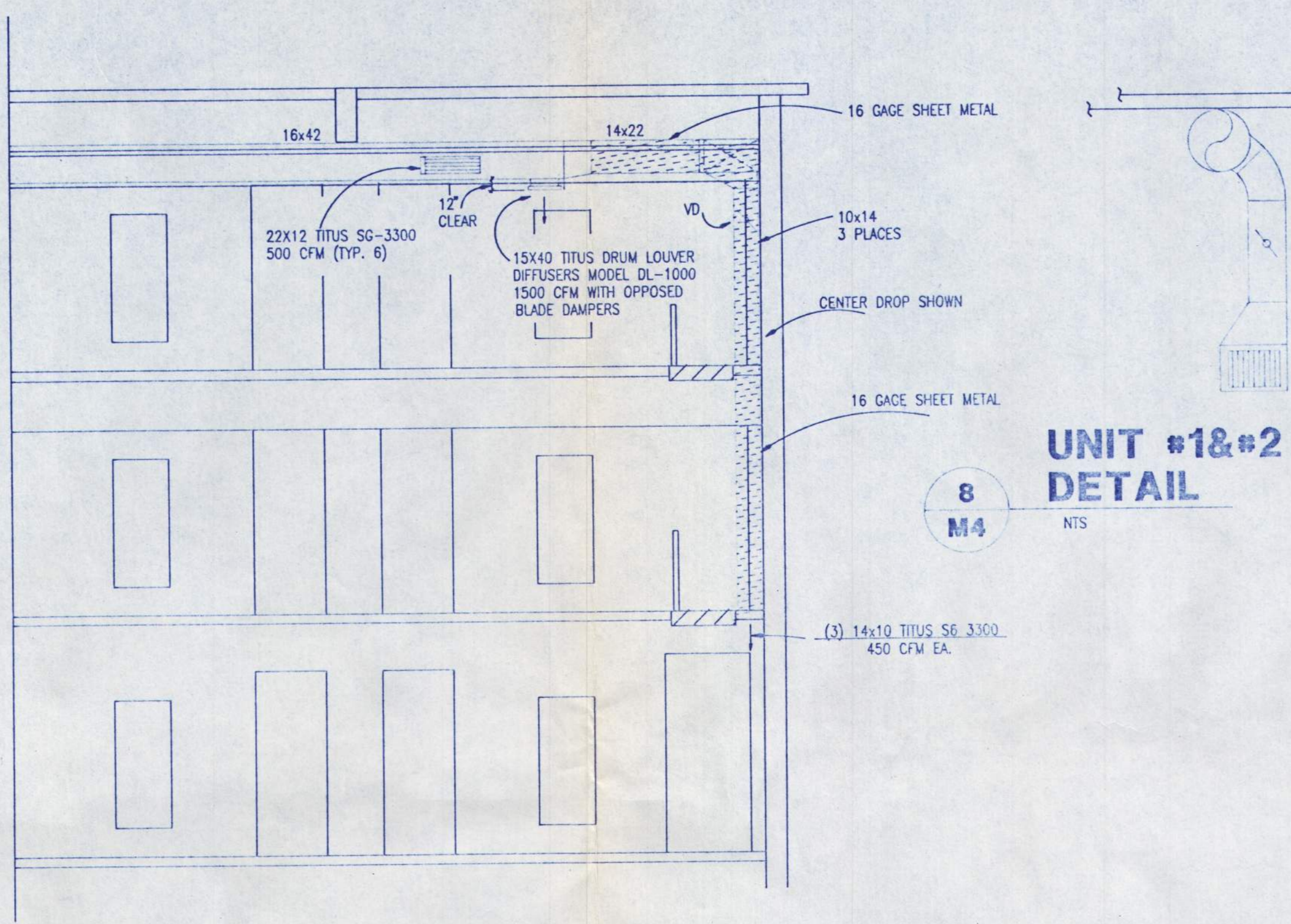
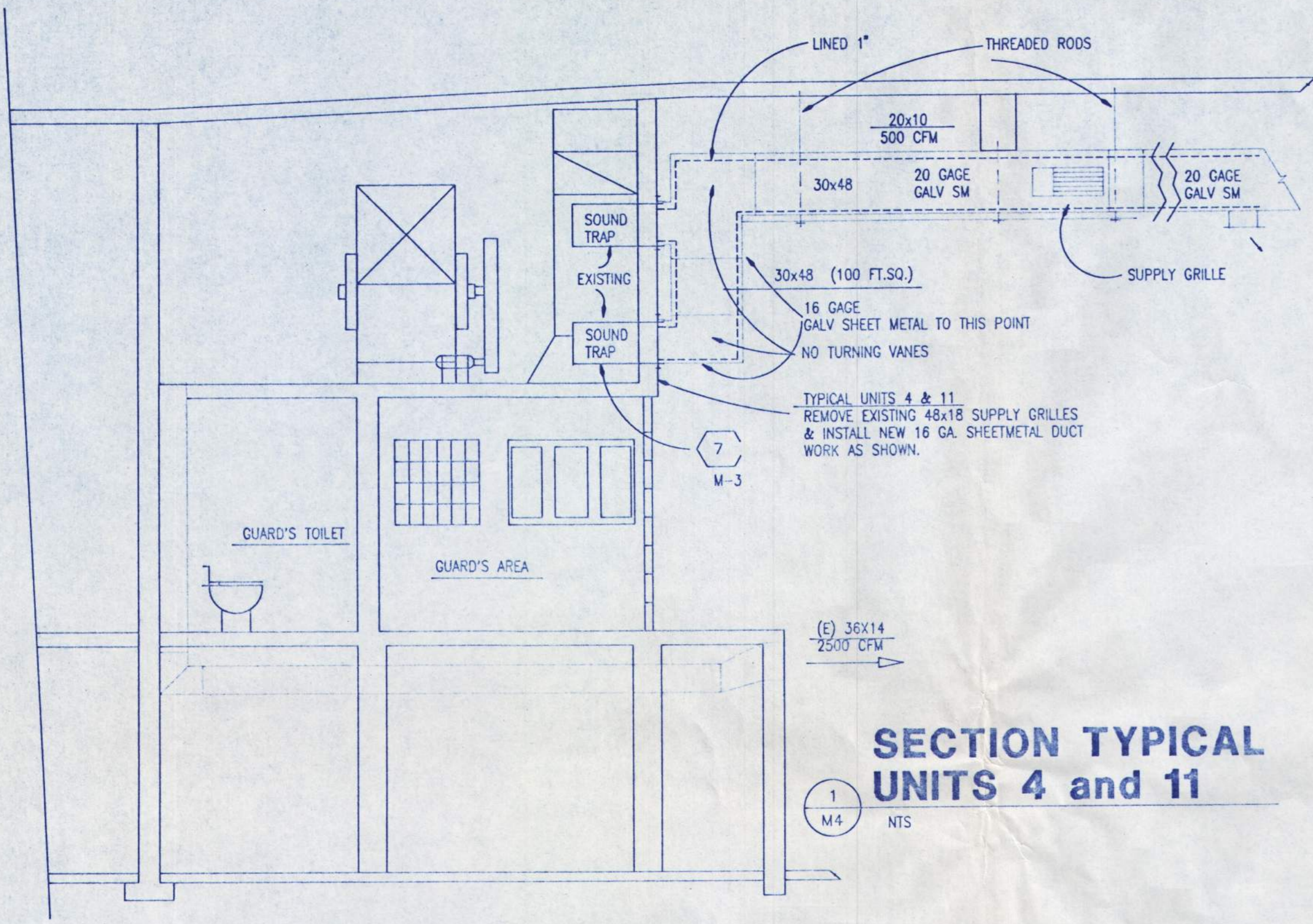
O.S.C.I.
OREGON STATE CORRECTIONAL INSTITUTION
ENERGY PROJECT PH. 3
SALEM, OREGON

DESIGN RP SHEET NUMBER
DRAWN SCB
CHECKED RP
APPROVED WAJ
DATE 8/15/92
SCALE 1/8" = 1'
JOB NO. 3-92065-01

SEAL
WILLIAM GOLD
ALAN GOLD

FLOOR PLAN - HVAC
SCALE: 1/16" = 1'-0"

NE SIDE OF O.S.C.I. DRAWING

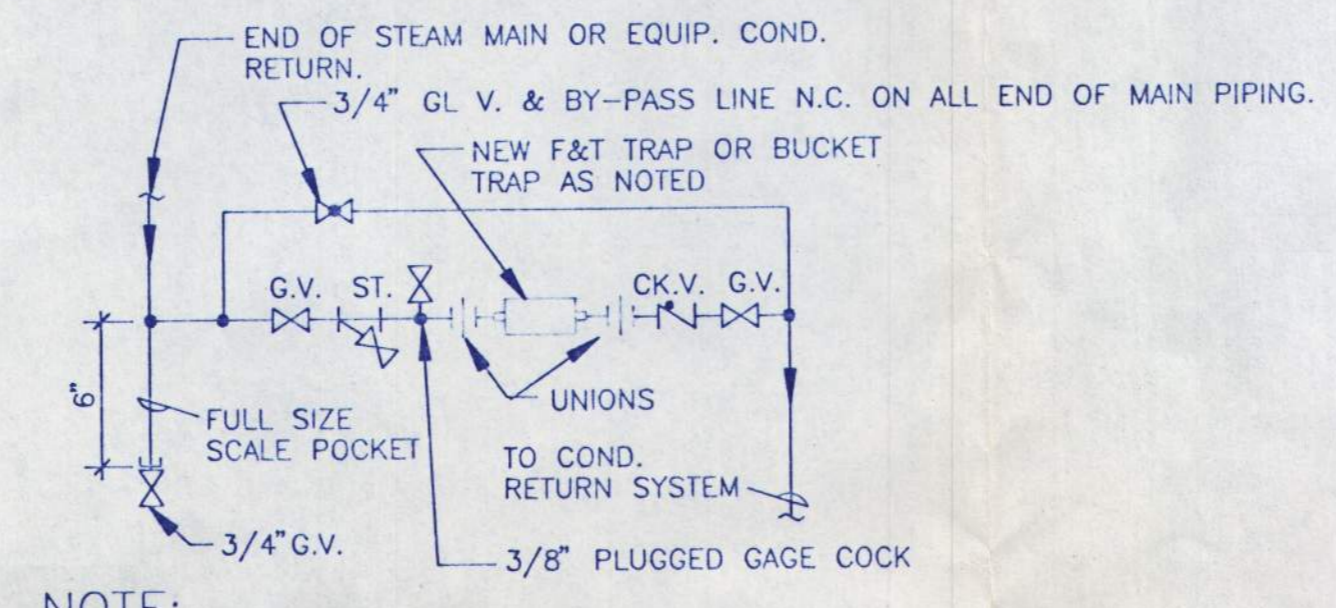
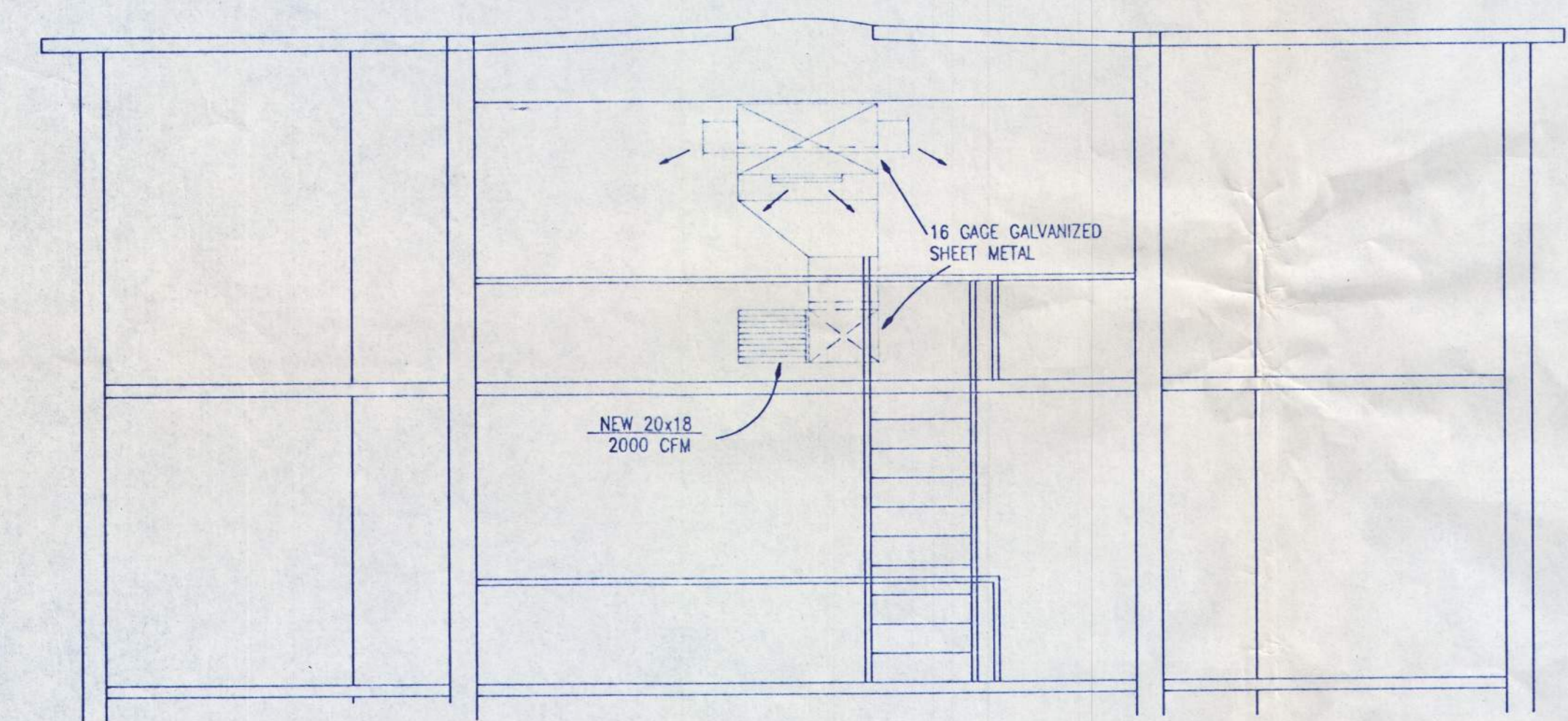
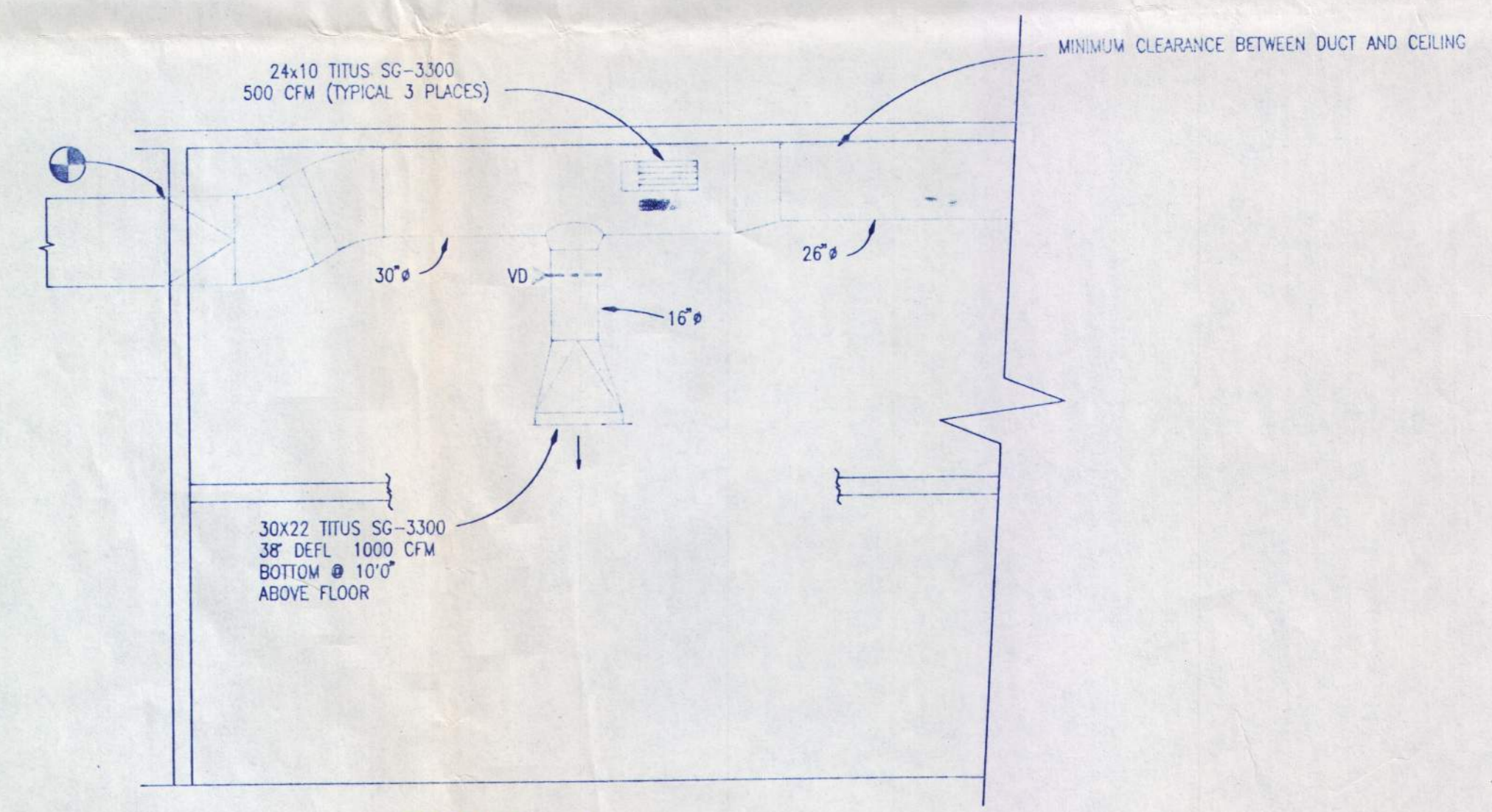


SECTION TYPICAL UNITS 4 and 11

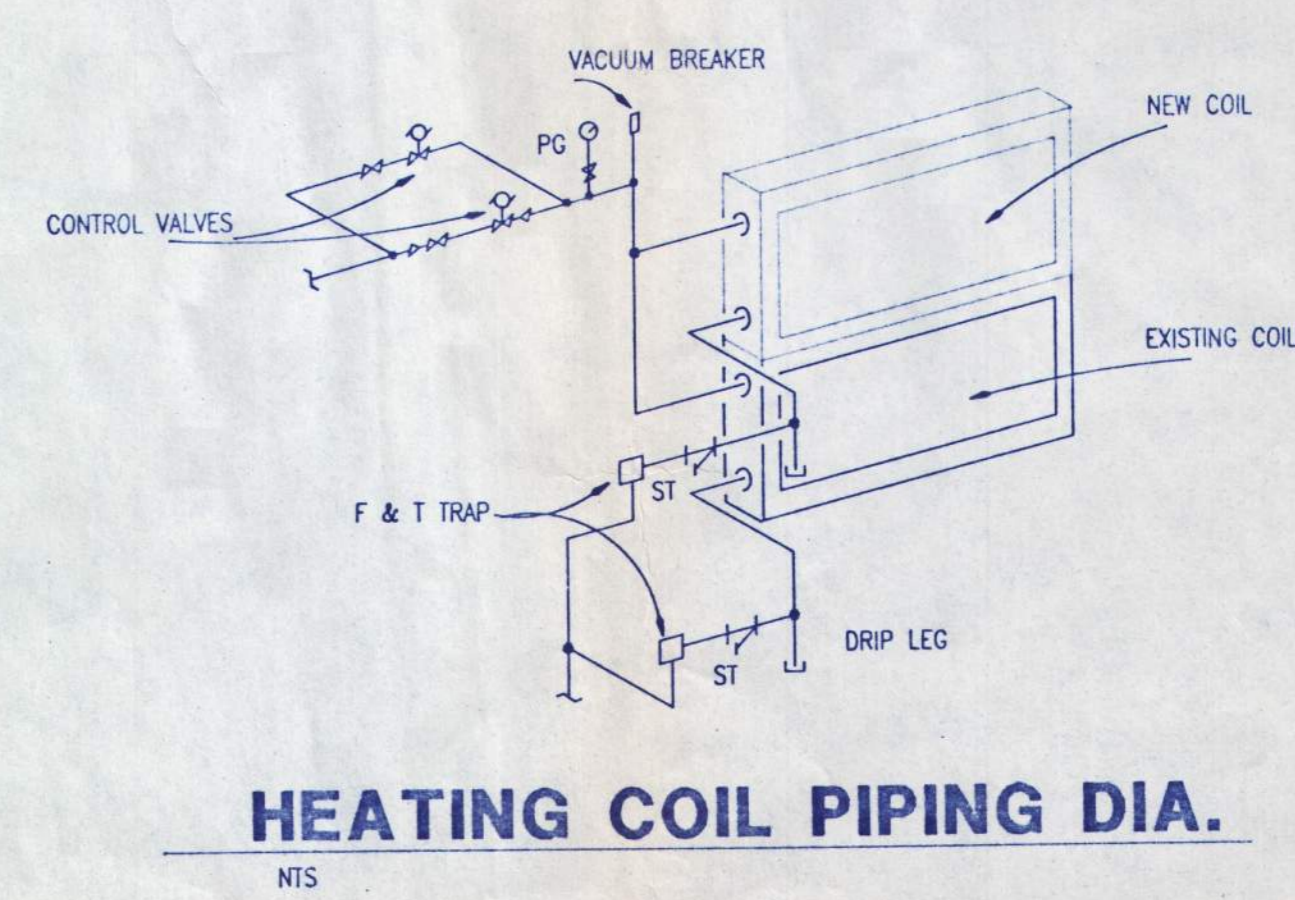
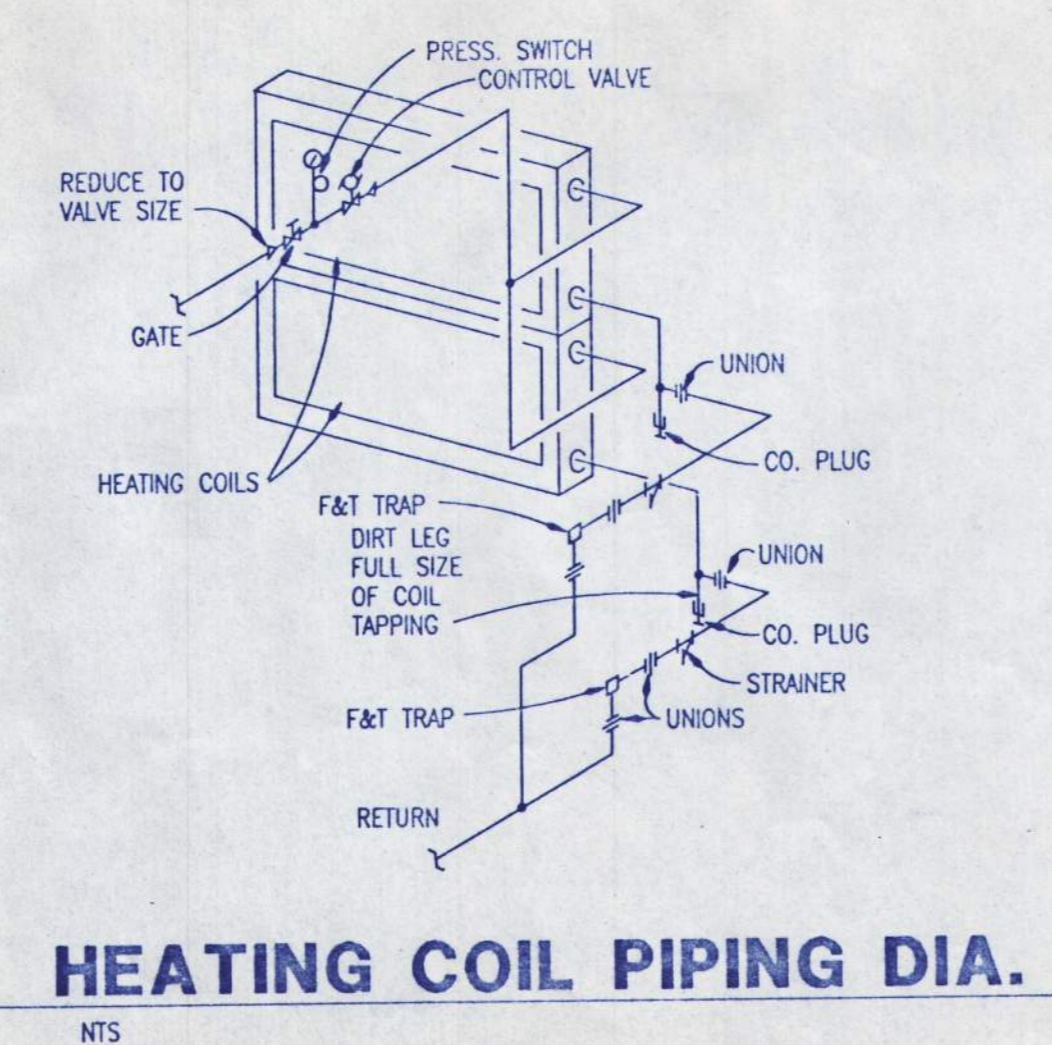
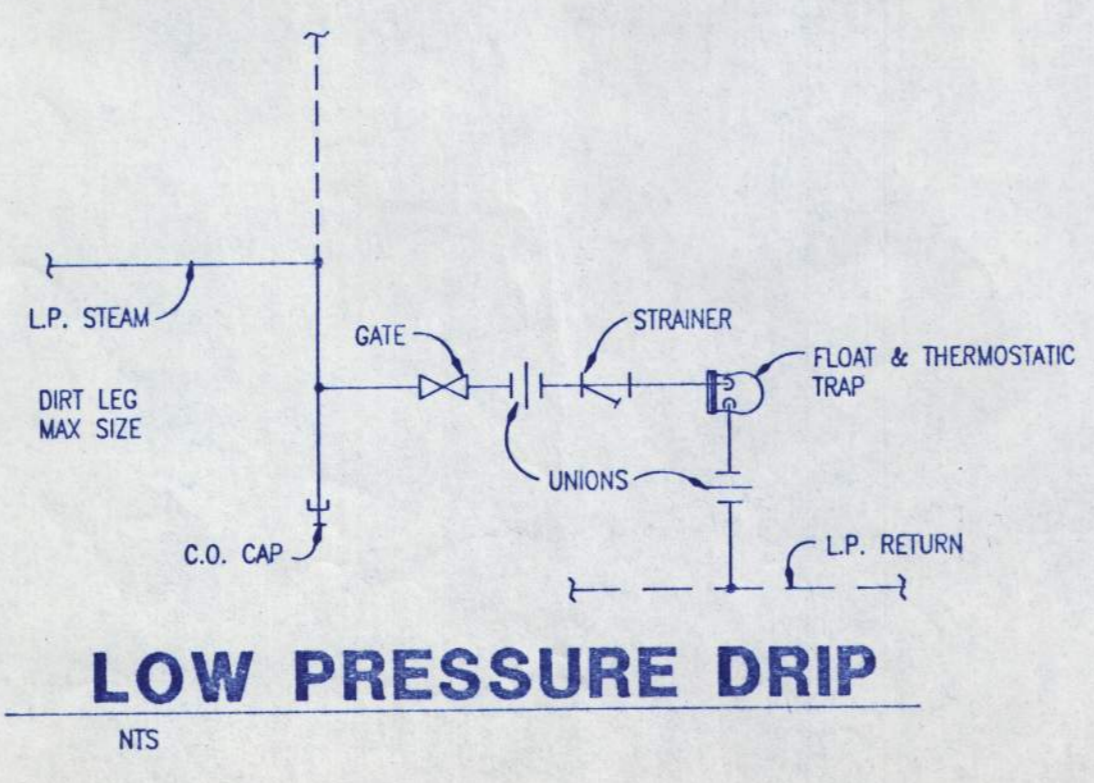
2
M4
NTS

SECTION TYPICAL UNITS 3

5
M4
NTS



NOTE:
ALL END OF MAIN OR BASE OF RISER DIA'S TO BE MIN. 3/4" SIZE. F&T FOR LOW PRESSURE, BUCKET FOR MEDIUM & HIGH PRESSURE.
ALL TRAP ASSEMBLY COMPONENTS FOUND DEFECTIVE ARE TO BE REPLACED USING APPROVED PRICING INFORMATION. PROVIDE AT BID TIME.



NO.	DESCRIPTION OF REVISION	DATE

Bouillon Christofferson & Schairer Inc.
 Seattle Sunnyvale Portland
 6285 S.W. Meadows Rd. Suite 204
 Lake Oswego, Oregon 97035
 (503) 654-4873 FAX: 684-4875

O.S.C.I.
 OREGON STATE CORRECTIONAL INSTITUTION
 ENERGY PROJECT PH. 3
 SALEM, OREGON

SECTIONS & DETAILS

DESIGN	RP	SHEET NUMBER
DRAWN	SCB	M4
CHECKED	RP	
APPROVED	WAG	
DATE	8/23/92	
SCALE	1/4" = 1'	JOB NO. 3-92085-01

SEAL: *Alan Gold*
 REGISTERED PROFESSIONAL ENGINEER
 NO. 12720
 OREGON
 JULY 8, 1988
 ALAN GOLD