

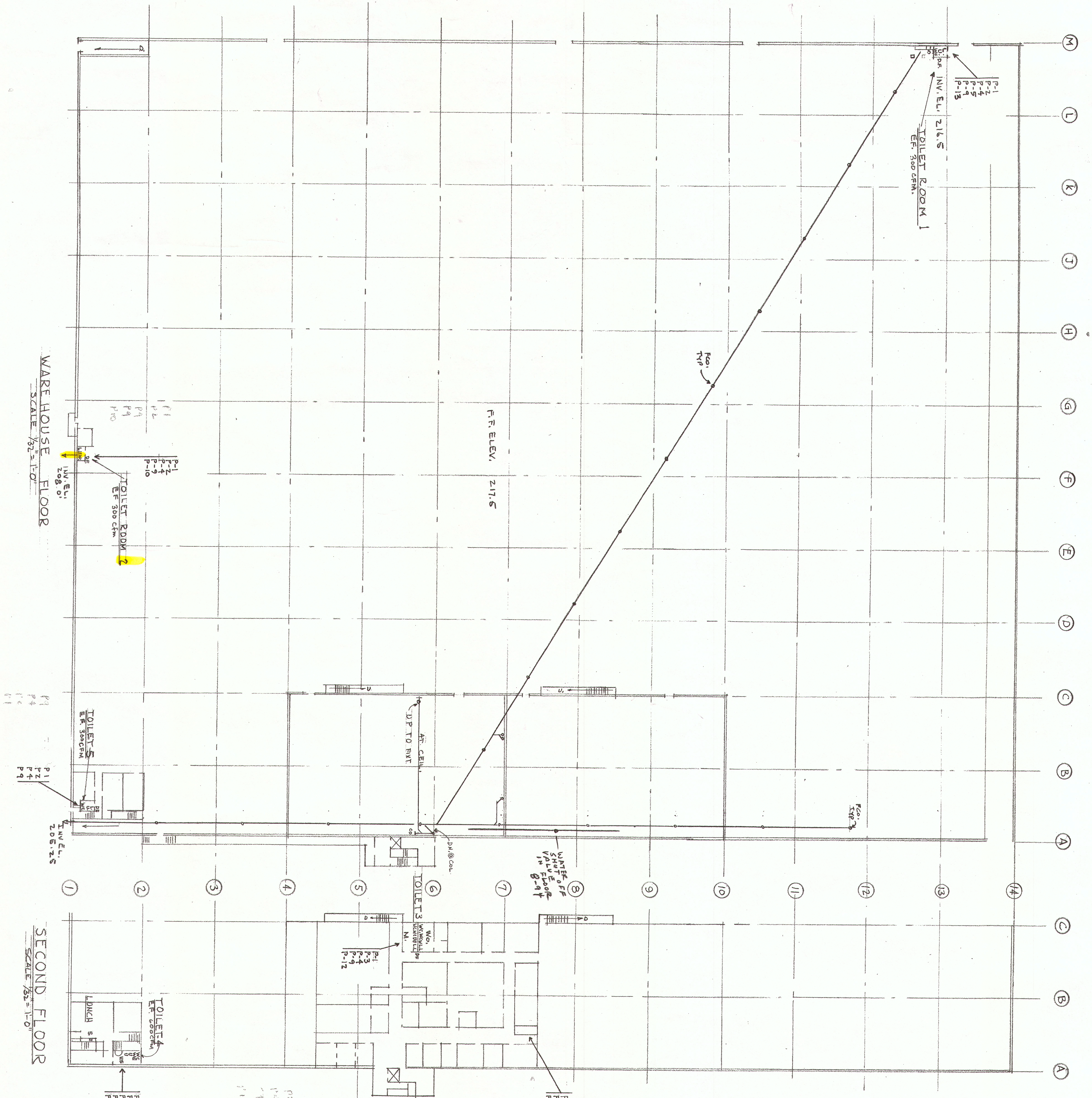
DATE: DEC 64
DRAWN: JWP

S W E D B E R G & A S S O C I A T E S A R C H I T E C T S

708 PACIFIC AVENUE
TACOMA, WASH. 98402

W E S T S A L E M C O A S T G R O C E R Y

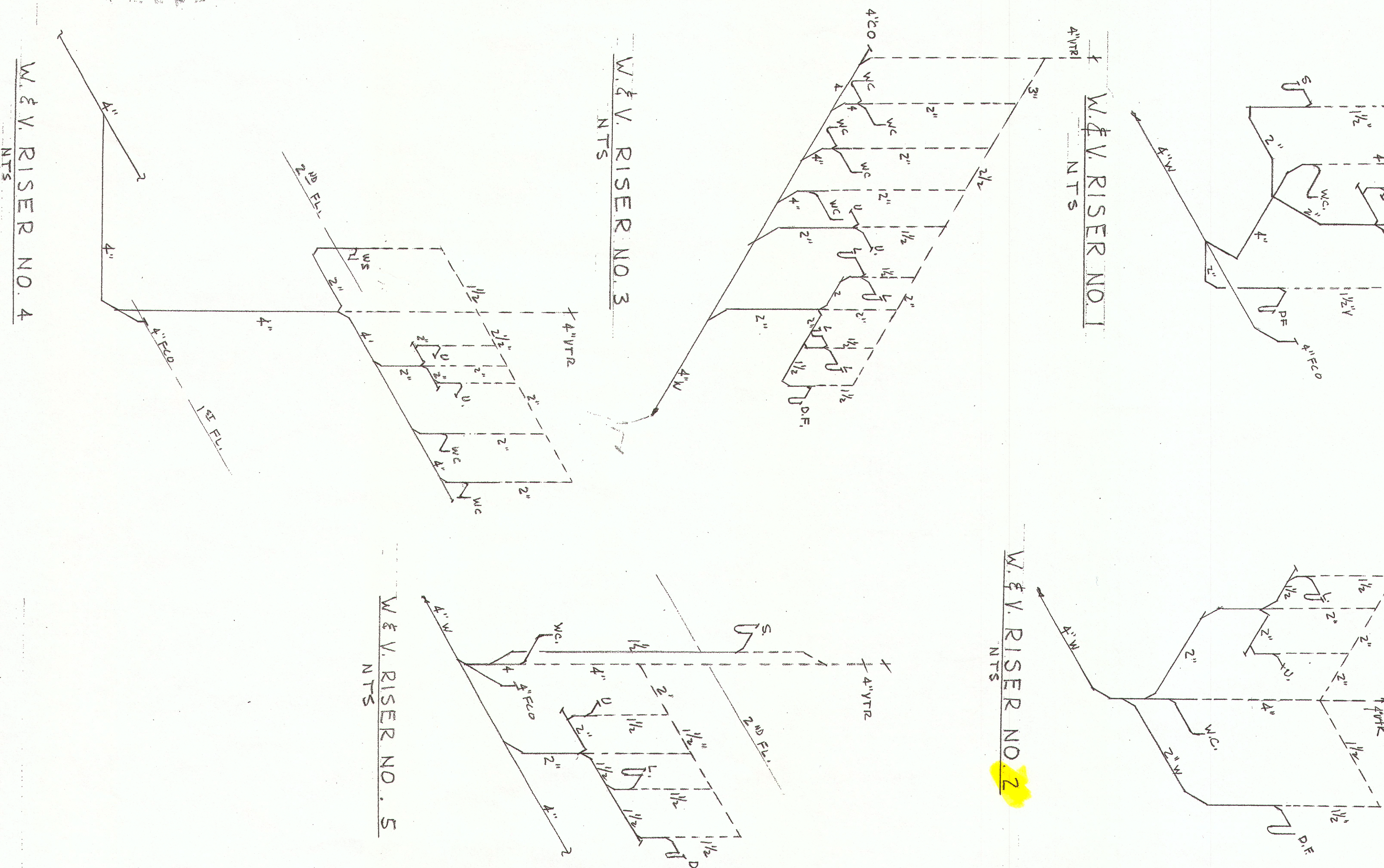
REVISER: JWP
DATE: MAR 69
PLUMBING PLAN & DETAILS



P1
P2
P3
P4
P5
P6
P7
P8
P9
P10
P11
P12
P13

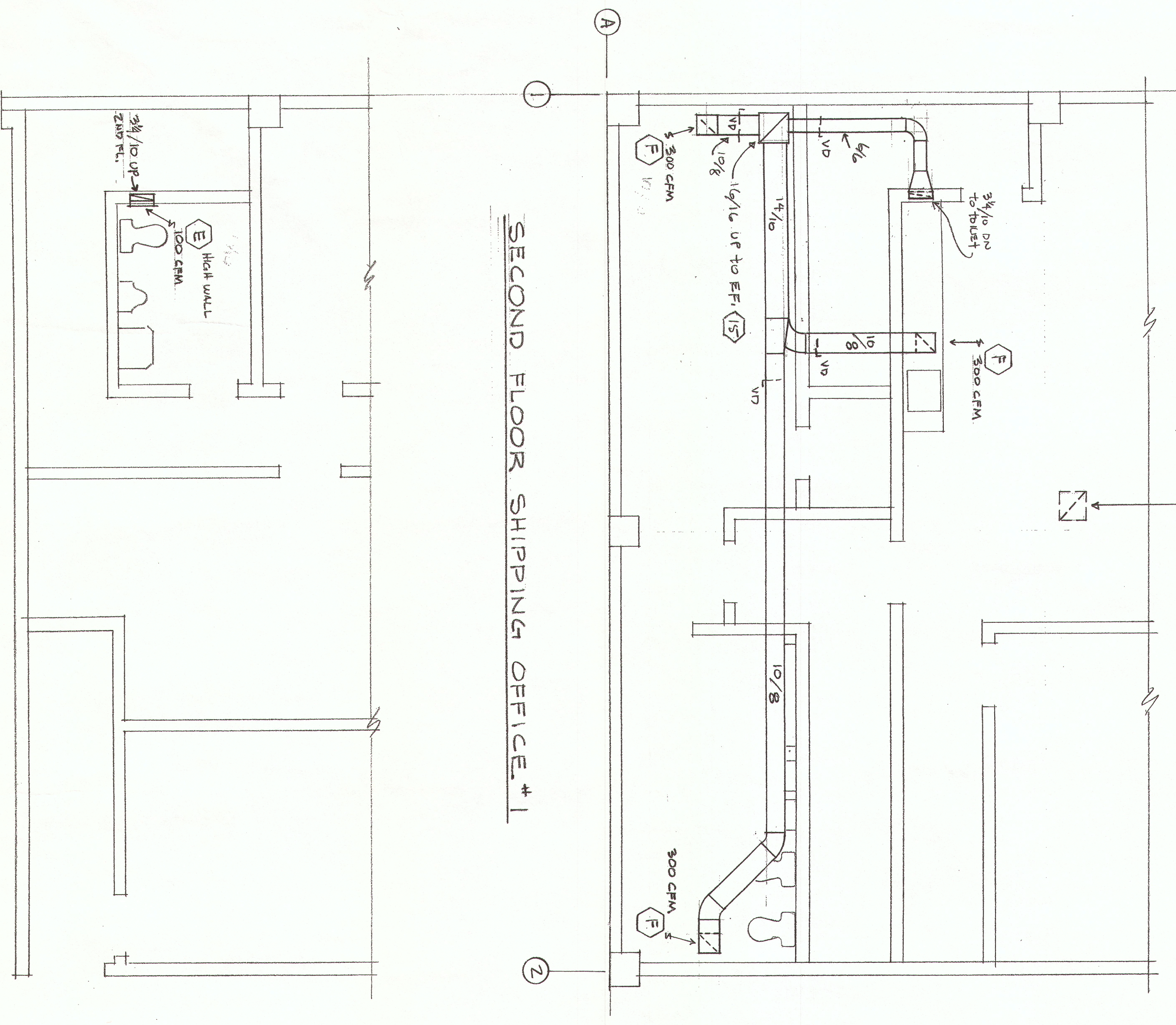
SYM	DESCRIPTION	CATALOG NO	TEIM	CONNECTIONS	NOTE(S)
P1	TOILET	M. STD. P. 2222	SLOAN DOCPHIN	1 4 2	FLOOR MT
P2	URINAL	F. 6400	SLOAN DOCPHIN	2 1 1/2	FLOOR MT
P3	URINAL	F. 6500	SLOAN DOCPHIN	2 1 1/2	WALL MT
P4	LAV.	P. 4869-40	FED. RUBER P. 7200	1/2 1/2 1/2	19x17
P5	SINK	ELKAY LR 3122	FED. RUBER P. 74280	1/2 1/2 1/2	31x22 18 GA
P6	SINK	ELKAY MR 2522	FED. RUBER P. 74280	1/2 1/2 1/2	25x22 18 GA
P7	SINK (WASH)	M. STD. P. 8500	ANSTD. R. 5045	1/2 1/2 1/2	5" 3 FAUCET
P8	MOP SINK	P. 7740	R. 2415	1/2 1/2 2"	FLOOR MT
P9	DRINK FOUNT	" F. 8310	R. 6000	1/2 1/2 1/2	
P10	WATER HTR	MTL. ERGL 20	ASME RV	3/4 3/4	277 V. 2 KU
P11	WATER HTR	MTL. ERGL 40	ASME RV	3/4 3/4	277 V. 3 KU
P12	WATER HTR	MTL. ERGL 72	ASME RV	3/4 3/4	277 V. 4.5 KU
P13	WATER HTR	MTL. ERGL 40	ASME RI	3/4 3/4	277 V. 9 KU

USE METAL TOMETAL SHOPS.

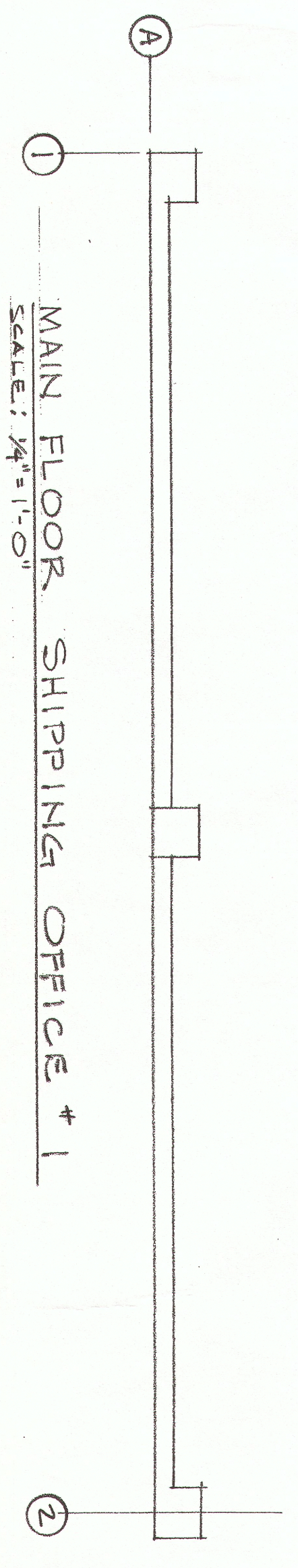


Note Added FAN 1
7 APRIL 69

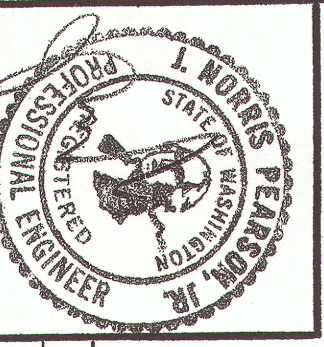
12/12 (9) IN CELL OF 3RD FLOOR MECHANICAL ROOM
DUCT UP THRU ROOF TO
ROOF EXH FAN (14)



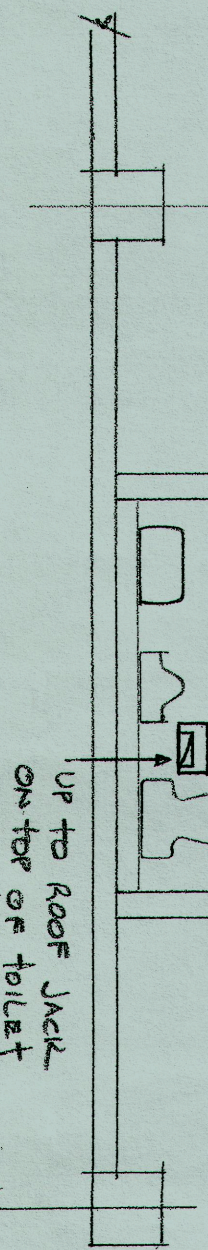
SECOND FLOOR SHIPPING OFFICE #1



MAIN FLOOR SHIPPING OFFICE #1



DATE 7 APRIL 69
DRAWN BY SWEDBERG & ASSOCIATES A/E



SHIPPING OFFICE # 2
SCALE: 1/4" = 1'-0"

ARCHITECTS

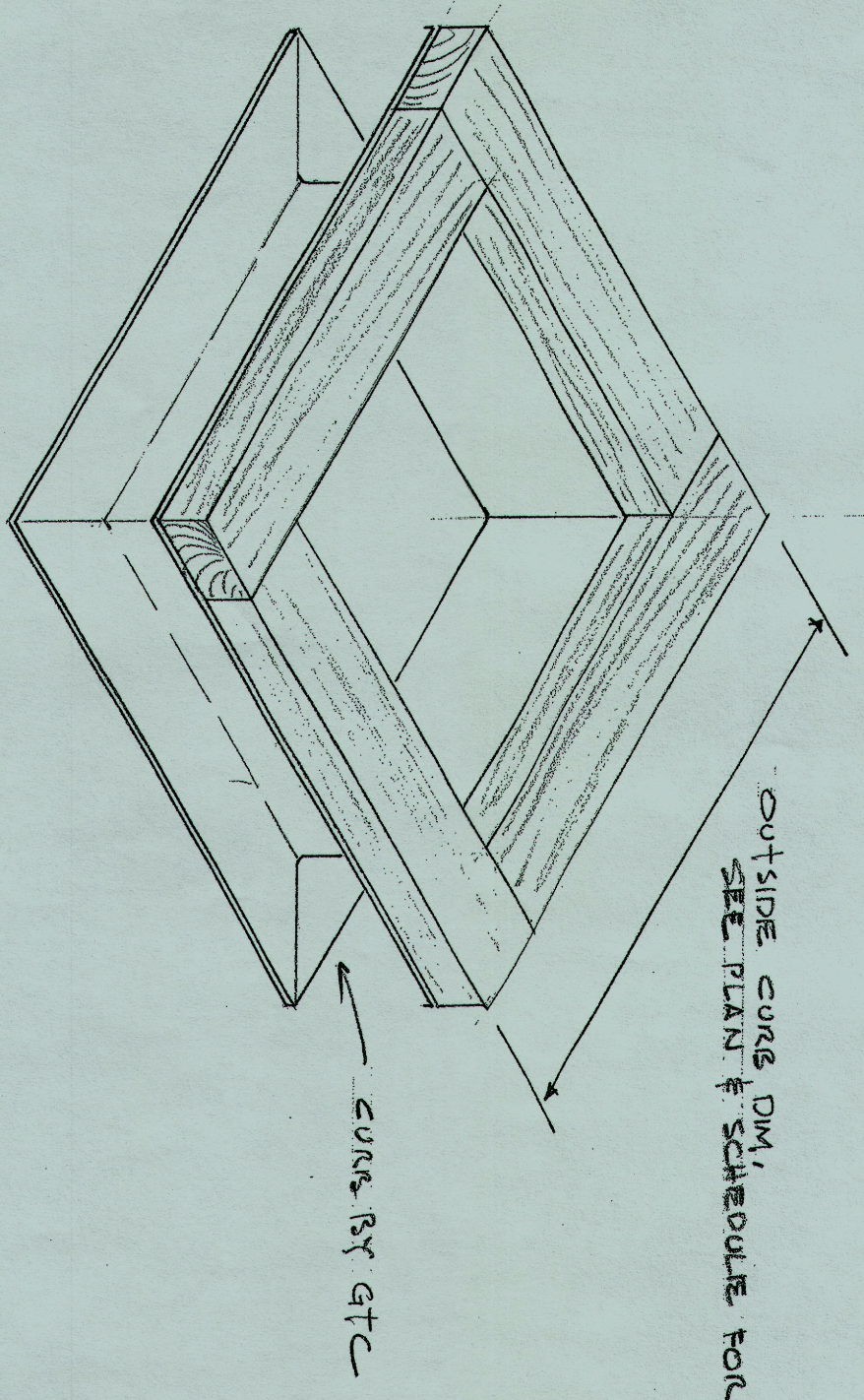
708 PACIFIC AVENUE
TACOMA, WASH. 98402

WEST COAST GROCERY CO.
SALEM, OREGON

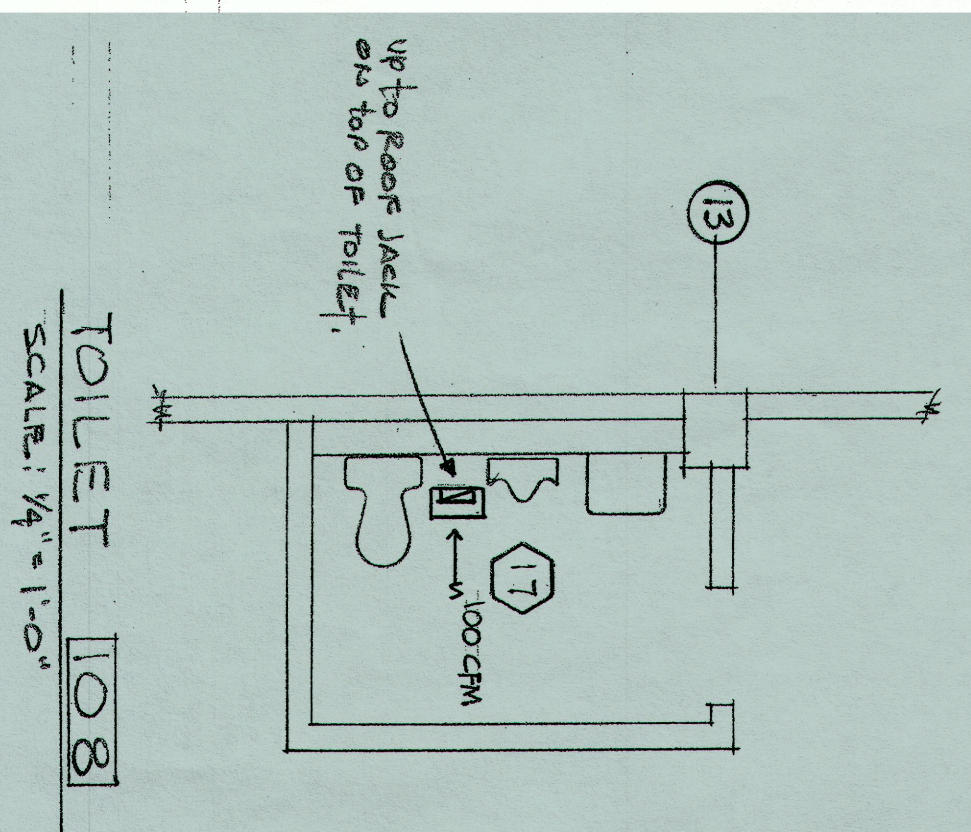
EXHAUST & VENTILATION M/3

WITH REVISIONS 7 APRIL 69 ADDED EXH FAN & MOVED SHIPPING OFFICE FAN

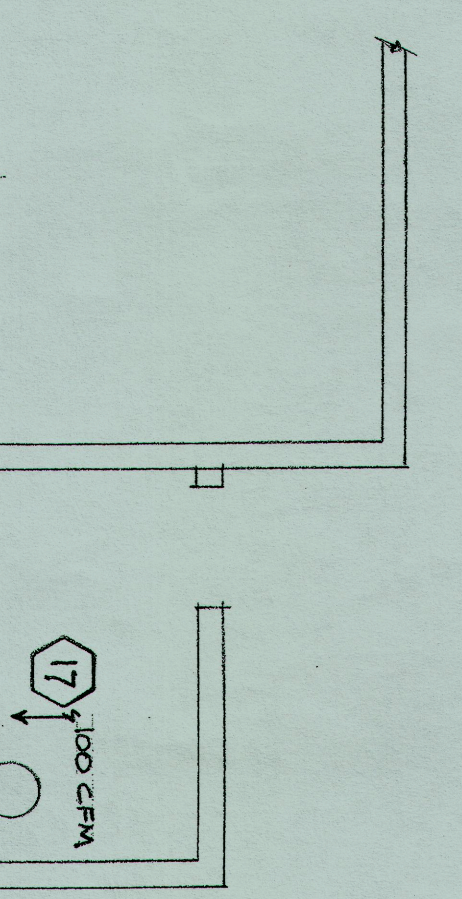
68-71

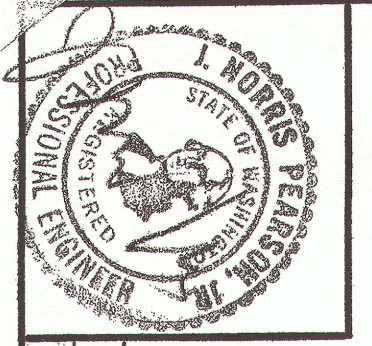


DETAIL OF ROOF CURB BY GTC
NOT TO SCALE

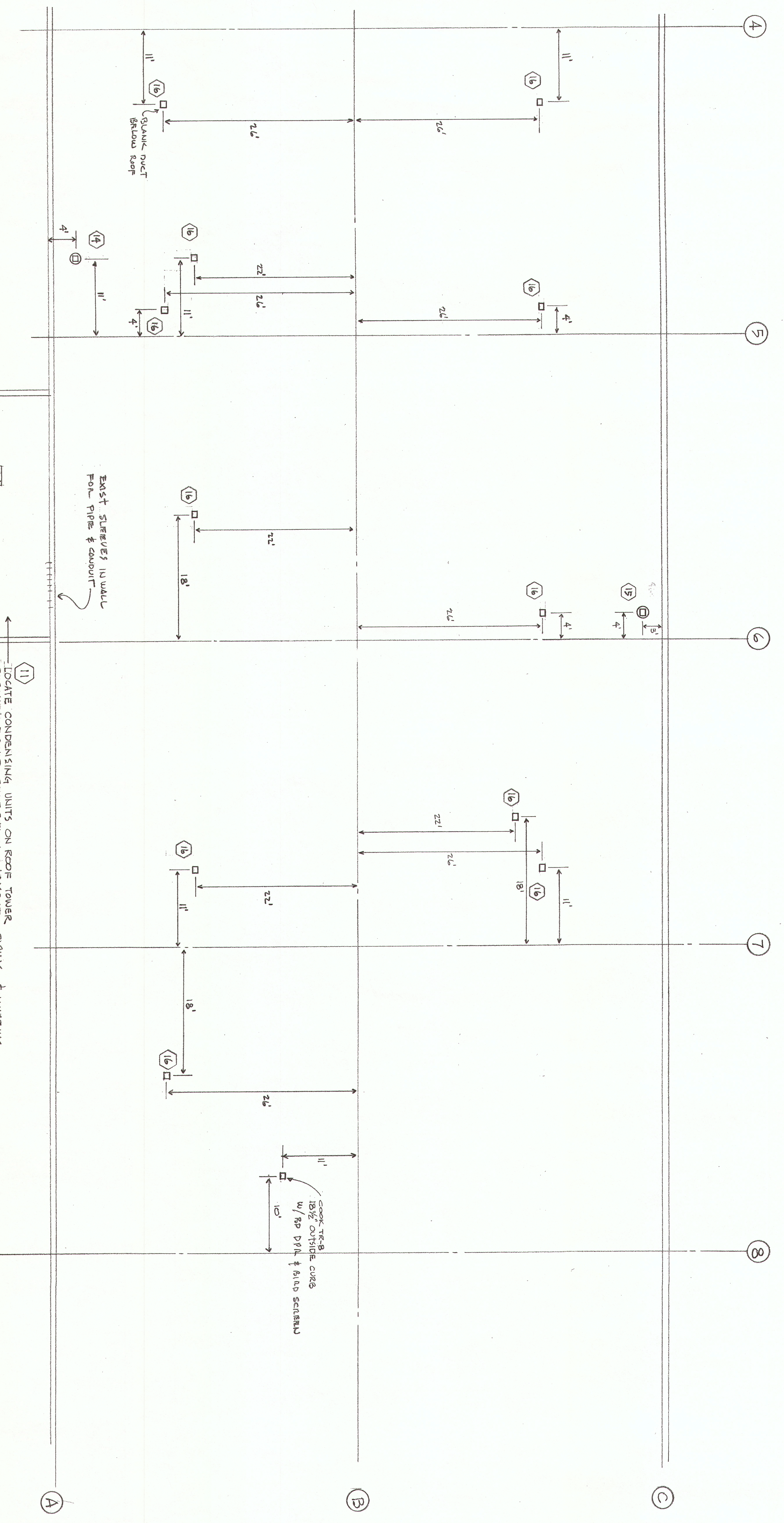


TOILET 108
SCALE: 1/4" = 1'-0"





DATE: 7/14/54
 DRAWN: WTB
S W E D B E R G & A S S O C I A T E S A R C H I T E C T S
 708 PACIFIC AVENUE TACOMA, WASH. 98402
 WEST COAST GROCERY CO.
 ROOF PLAN, SCHEDULES M, N, O, P, Q, R, S, T, U, V, W, X, Y, Z
 68-71



OFFICE ROOF PLAN
 SCALE: 1/8" = 1'-0"

GRILLE, REGISTER & LOUVER SCHEDULE

DATA SHOWN IS BASED ON TITUS UNLESS OTHERWISE SHOWN.
 O.G. & PROPOSED BLADE DIMENSIONS

SYM	QTY	TYPE	SIZE	DAMPERS	NOTES
A	204	SUP	6x8	OB.	
B	204	SUP	8x8	OB.	
C	204	SUP	8x10	OB.	
D	204	SUP	10x10	OB.	
E	R4-50	GRILLE	6x10	OB.	
F	R4-50	GRILLE	10x10	OB.	
G	R4-50	GRILLE	12x12	OB.	
H	R4-50	GRILLE	12x14	OB.	
J	R4-50	GRILLE	24x24	-	
K	(2) R4-50	RELIEF	14x12	FD	BACK TO BACK 1/2" FROM FLOOR

HEATING, COOLING & VENTILATING EQUIPMENT SCHEDULE

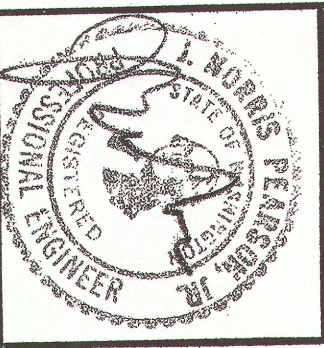
SYM	DESCRIPTION	MFG.	CAT. NO.	CFM	SP ⁴	HP	ELEC. HEAT WATT	AS REQ'D	AS REQ'D	AS REQ'D	COOL MBH	CONTROL	NOTES
1	EVAPORATOR UNIT	GENERAL ELECTRIC	1950	490	.7	50	50	AS REQ'D	AS REQ'D	AS REQ'D	47.6	Room thermostat	NOTES: APPROX 450 CFM/TON (EXCEPT AS NOTED)
2	EVAPORATOR UNIT	WESTINGHOUSE	411	800	.6	13	38	AS REQ'D	AS REQ'D	AS REQ'D	21.0		AMSTRONG HUMIDIFIER *YE - 4000 W. - 208-1φ (550 CFM/TON)
3	EVAPORATOR UNIT	WESTINGHOUSE	411	1850	.6	33	49.0	AS REQ'D	AS REQ'D	AS REQ'D	46.1		AMSTRONG HUMIDIFIER *YE - 8000 W. - 208-1φ (550 CFM/TON)
4	EVAPORATOR UNIT	WESTINGHOUSE	411	1950	.6	33	32.3	AS REQ'D	AS REQ'D	AS REQ'D	35.8		
5	EVAPORATOR UNIT	WESTINGHOUSE	411	1750	.6	34	26.4	AS REQ'D	AS REQ'D	AS REQ'D	29.7		
6	EVAPORATOR UNIT	WESTINGHOUSE	411	1300	.6	18	26.4	AS REQ'D	AS REQ'D	AS REQ'D	26.4		
7	EVAPORATOR UNIT	WESTINGHOUSE	411	1000	.7	15	26.4	AS REQ'D	AS REQ'D	AS REQ'D	26.4		
8	EVAPORATOR UNIT	WESTINGHOUSE	411	1000	.6	15	26.4	AS REQ'D	AS REQ'D	AS REQ'D	26.4		
9	EVAPORATOR UNIT	WESTINGHOUSE	411	1000	.6	15	26.4	AS REQ'D	AS REQ'D	AS REQ'D	26.4		
10	EVAPORATOR UNIT	WESTINGHOUSE	411	1000	.6	15	26.4	AS REQ'D	AS REQ'D	AS REQ'D	26.4		
11	CONDENSING UNITS						42.6				42.6	LOW AMBIENT OPERATION	
12	OUTLET												
13	OUTLET												
14	EXH FAN	COOK	150028	500	1/8	1/20						0-60 TIMER	22 1/2" OUTSIDE CURB - BRD SCREEN - BACK DRAFT DAMP.
15	EXH FAN	COOK	150018	960	1/4	1/12						CU W/UTHS	22 1/2" OUTSIDE CURB - BRD SCREEN - BACK DRAFT DAMP.
16	ROOF INTAKE	COOK	TR-16	-	-	-						GLASS	26 1/2" OUTSIDE CURB - BRD SCREEN
17	EXH FAN	COOK	GENI	100	1/8	-						SW W/LITE	

CAUTION:

VOLTAGE AVAILABLE IS:
 480 V - 3φ
 277 V - 1φ
 208 V - 3φ
 120 V - 1φ

EQUIPMENT VOLTAGES OTHER THAN THOSE LISTED WILL HAVE TO BE OBTAINED W/ TRANSFORMER IN EQUIP.

- NOTE:**
1. DUCT CONNECT TO UNITS BY FLEX. - VENT FABRICS OR EQ.
 2. ALL DUCTS EXCEPT EXHAUST INSULATED W/ 1" - 2" INS. DENSITY DUCT LINER W/ 1 HR. RATE.
 3. IDENTIFY EACH UNIT AS TO NATURE, SERVICE, SYSTEM, & NUMBER BY STENCILING LETTERS OF APPROVED SIZE & WORDING UPON SAME.
 4. PROVIDE LOCATION CHART OF EQUIPMENT & TAGS.
 5. ISOLATE VALVES, CONTROLS, DAMPERS, W/ ALUMINUM TAGS 1/2" ROUND W/ 1/2" HIGH LETTERS FILED W/ BLACK PAINT - FASTEN W/ BRASS WIRE.
 6. ALL UNITS TO BE MOUNTED W/ VIB. ISOLATORS.
 7. CONFORM TO ALL LOCAL & STATE CODES.
 8. HEAT & COOL WALL TESTS FOR EACH EVAPORATOR UNIT.
 9. DUCTS MAY BE ROUND OR RECTANGULAR. AS PER SMANCA 10. MFG. FURNISHES STARTERS & CONTACTORS AS PER NEC.
 11. MFG. FURNISHES CONTROL WIRING AS REQ'D.
 12. HEATING EQUIP SHALL CONFORM TO NATIONAL ELEC. CODE ARTICLE 424-27 OVERCURRENT PROTECTION.
 13. ETC. FURNISHES DISCONNECTS & POWER CORDS.
 14. THE ELECTRICAL CHARACTERISTICS OF HEATING & COOLING EQUIPMENT SHALL BE SPECIFIED BY MANUFACTURER. THE INTENT IS THAT THEY BE DELIVERED MOUNTED DIRECT EXPANSION FAN COIL UNITS W/ ELECTRIC STRIP HEATING ATTACHED OR IN DUCT COMPRESSOR COMPRESSING UNITS ARE REMOVED AIR CORDS ON ROOF.
 15. ALL REFRIGERANT PIPING SHALL BE TYPE K COPPER W/ SOLDERED JOINTS, TESTED & INSULATED W/ AMARLEK FOM PASTE.
 16. COORDINATE DUCT WORK W/ FIRE SPRINKLER PIPING.
 17. DUCTS IN CEILING SPACE MAY BE FABRICATED OF PRESSURE GLASS DUCT BOARD IN ACCORD W/ SMANCA STANDARD.
 18. ALL FAN COIL & CONDENSING UNITS SHALL BE RATED BY ARI FOR CAPACITY IN LATEST DIRECTORY.



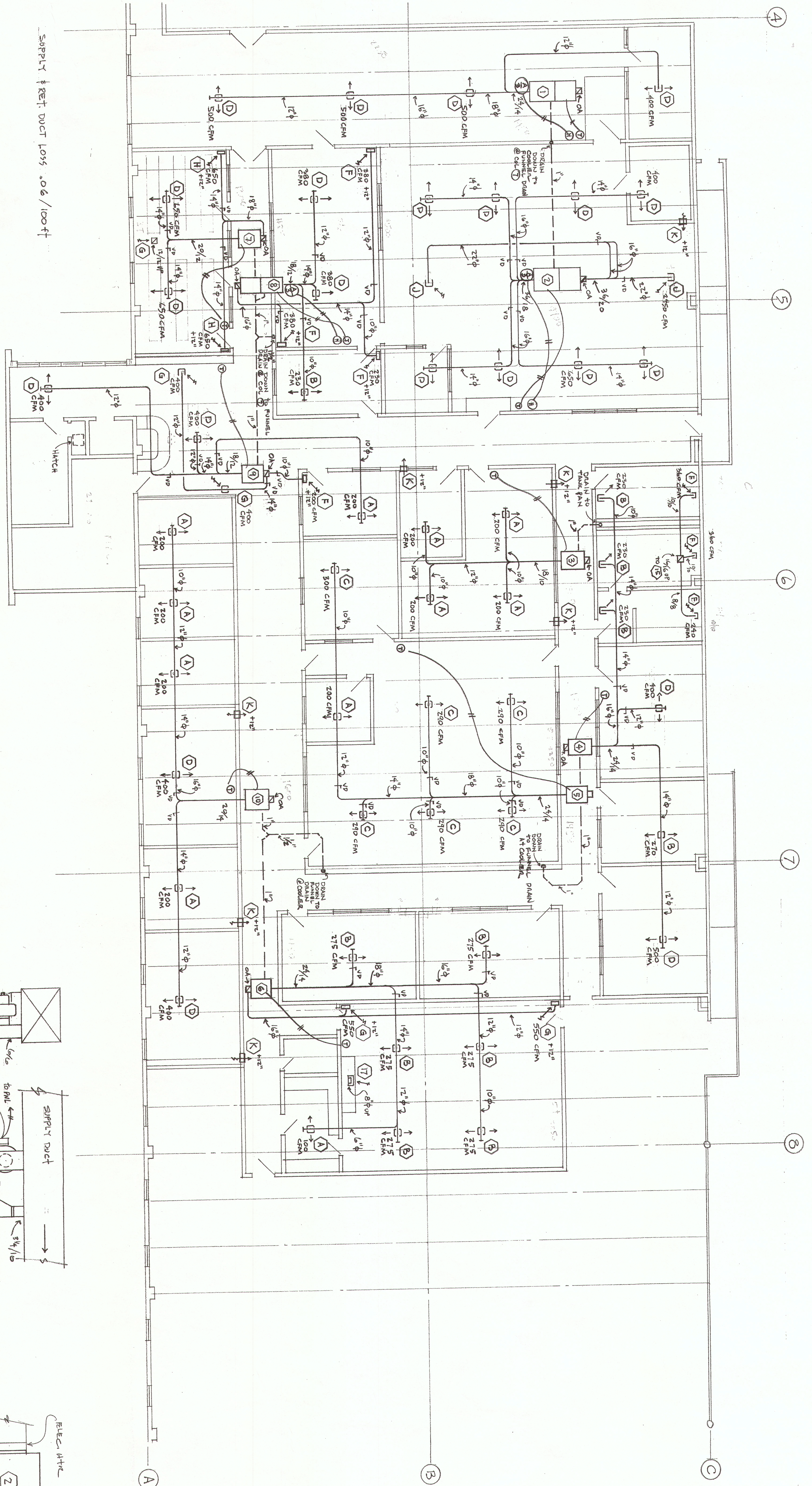
DATE: 27 MAR 64
DRAWN: WJH

S W E D B E R G & A S S O C I A T E S A R C H I T E C T S

708 PACIFIC AVENUE
TACOMA, WASH. 98402

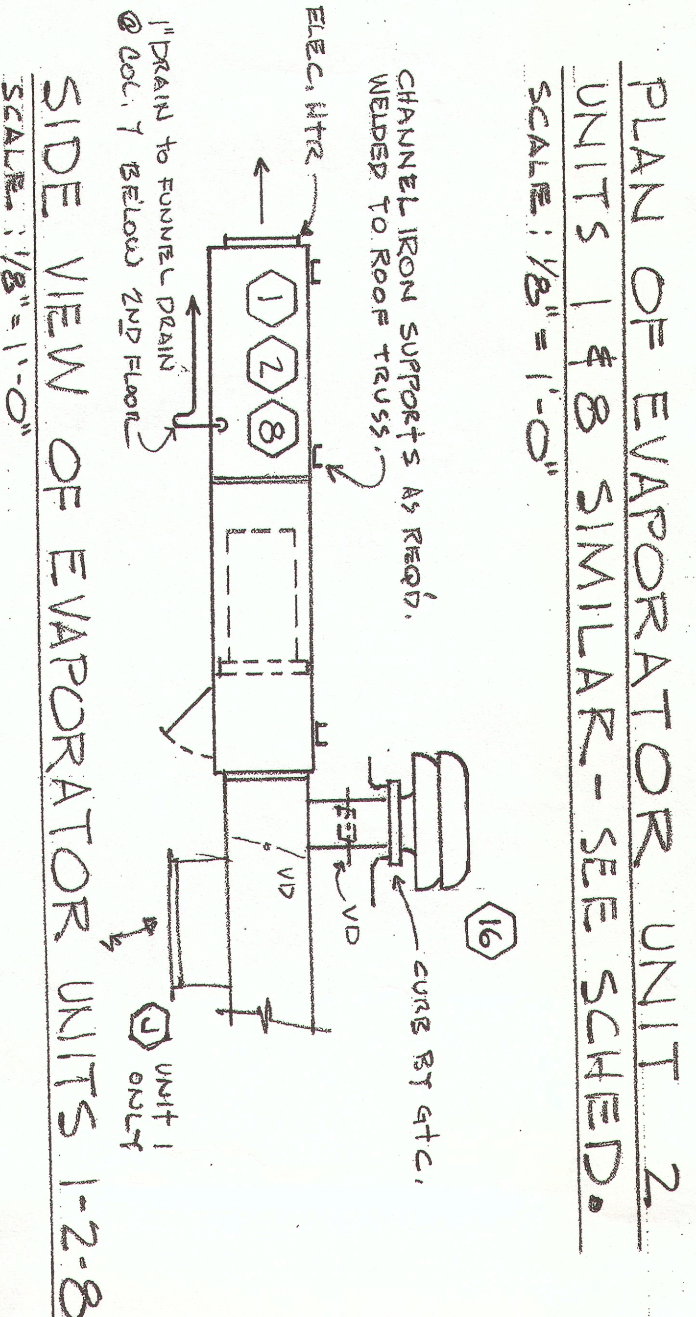
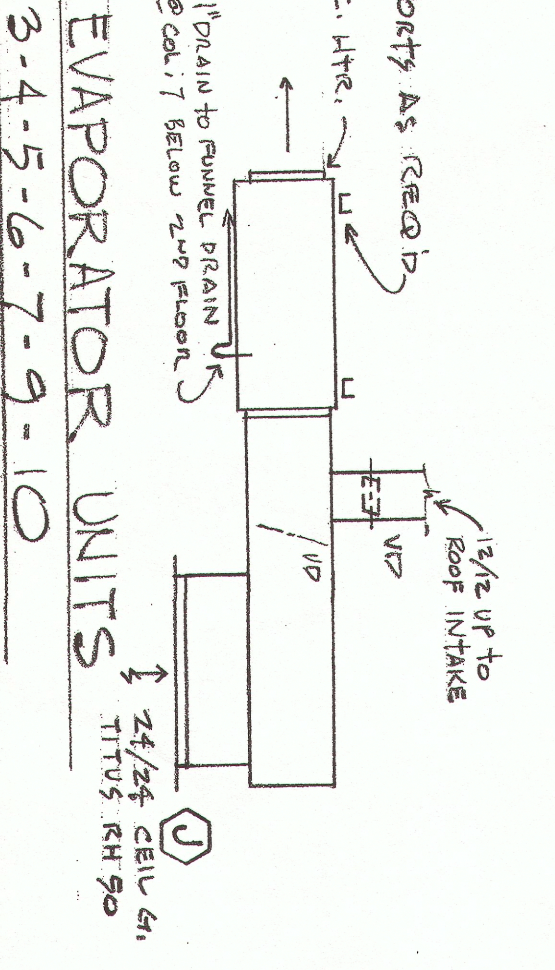
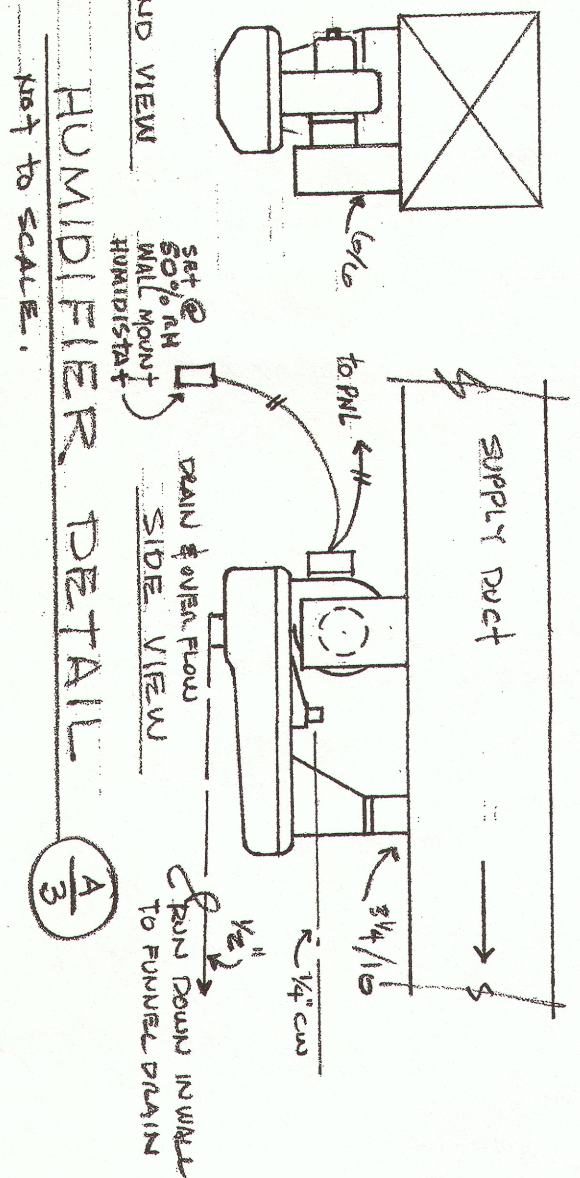
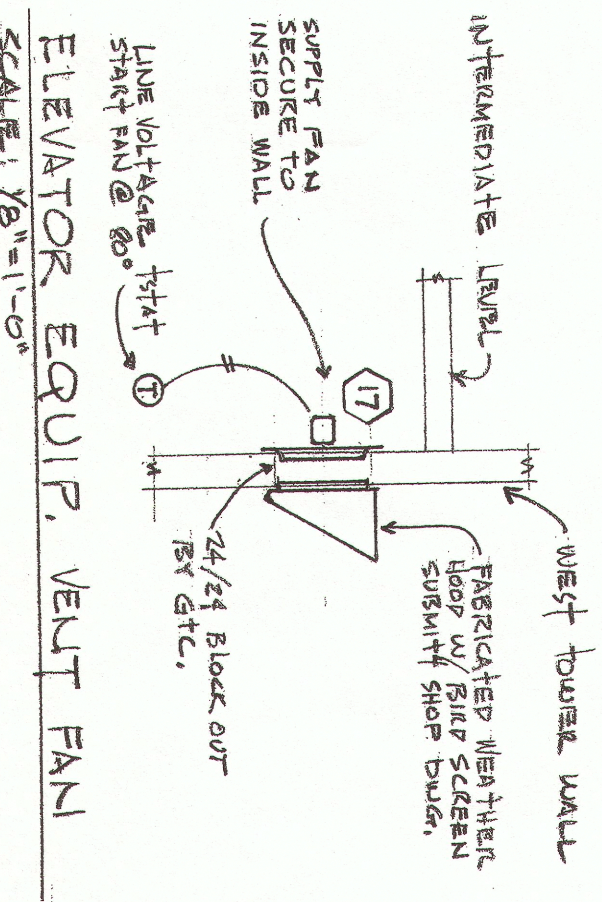
WEST COAST GROCERY CO.
SALEM, OREGON.

MAIN OFFICE DUCTS
AND EQUIP.
1871



SECOND FLOOR OFFICE PLAN
SCALE: 1/8" = 1'-0"

SUPPLY FRET DUCT LOSS .06 / 100 FT.



- LEGEND**
- ⊕ HUMIDISTAT
 - ⊖ THERMOSTAT
 - ⊞ EXH. OR RETURN DUCT
 - ⊞ SUPPLY DUCT
 - ⊞ DRAIN LINE (PLASTIC)
 - ⊞ GRILLE SCHEDULE
 - ⊞ EQUIPMENT SCHEDULE
 - ⊞ VOLUME DAMPER

NOTE:
GRILLE & REGISTER LOCATIONS ARE APPROXIMATE - COORDINATE WITH ELECTRICAL CONTRACTOR!

PLAN OF EVAPORATOR UNIT 2
UNITS 1 & 8 SIMILAR - SEE SCHED.
SCALE: 1/8" = 1'-0"

