

TELCOM SYMBOL LIST

SIGNAL SYMBOLS

	TELEPHONE OUTLET +18" A.F.F.
	WALL TELEPHONE OUTLET +48" A.F.F.
	CABLE FOR WIRELESS ACCESS POINT
	(2) PORTS PER OUTLET +18" A.F.F., U.O.N.
	'C' INDICATES OUTLET ABOVE COUNTER
	'X' INDICATES CABLE/PORT COUNT IN FP
	OUTLET IN FLOOR BOX (2) PORTS U.O.N.
	OUTLET INSTALLED IN POKE-THROUGH
	CATV OUTLET +18" A.F.F., U.O.N.
	JUNCTION BOX
	AUDIO/VISUAL OUTLET +18" A.F.F., U.O.N.
	CLOCK
	FLOOR STANDING DATA RACK
	DOUBLE SIDED VERTICAL CABLE MANAGER
	LADDER RACK/ CABLE TRAY

WIRING SYMBOLS

	CONDUIT SIZE
	CONDUIT (UNDER SLAB OR FLOOR)
	FLEXIBLE CONNECTION
	CONDUIT, STUBBED & CAPPED

FIRE ALARM SYMBOLS

	FIRE ALARM MANUAL PULL STATION, +48" A.F.F.
	MAGNETIC DOOR HOLDER
	SMOKE DETECTOR, DUCT, IONIZATION TYPE W/SAMPLING TUBE
	SMOKE DETECTOR, DUCT, PHOTO TYPE W/SAMPLING TUBE
	SMOKE DETECTOR, IONIZATION TYPE
	SMOKE DETECTOR, PHOTO TYPE
	HEAT DETECTOR, RATE-OF-RISE OR FIXED TEMP.
	FIRE MAIN FLOW DETECTION SWITCH
	FIRE MAIN TAMPER DETECTION SWITCH
	FIRE ALARM BELL, +80" A.F.F., U.O.N.
	FIRE ALARM HORN, +80" A.F.F.
	FIRE ALARM HORN/STROBE, +80" TO 96" A.F.F.
	FIRE ALARM STROBE, +80" TO 96" A.F.F.
	FIRE ALARM INPUT MODULE
	FIRE ALARM OUTPUT MODULE
	FIRE ALARM CONTROL PANEL
	FIRE ALARM REMOTE ANNUNCIATOR
	STAND ALONE - RESIDENTIAL SMOKE DETECTOR 120V W/ BATTERY
	CARBON MONOXIDE DETECTOR RESIDENTIAL 120V W/ BATTERY

NOTATIONS

	DRAWING NOTE
	DETAIL REFERENCE: TOP=DETAIL NO., BOTTOM=SHEET NO.
	MECHANICAL EQUIPMENT MARK NO. (SEE EQUIPMENT SCHEDULE)
	EQUIPMENT NO. (SEE EQUIPMENT SCHEDULE)

SECURITY SYMBOLS

	CCTV CAMERA
	PTZ DOME CAMERA (W/ PTZ OR FIX)
	'X' INTRUSION SENSOR ('X' INDICATES DEG. OF COVERAGE)
	GLASS BREAK SENSOR
	DOOR POSITION SENSOR
	KEYPAD +48" A.F.F.
	PROXIMITY CARD READER +48" A.F.F.
	ELECTRIC LATCH/LOCK
	REQUEST TO EXIT DEVICE

	APPROX. CAMERA VIEW
	APARTMENT ENTRY SYSTEM

PAGING AND INTERCOM SYMBOLS

	CEILING MOUNTED SPEAKER
	WALL MOUNTED SPEAKER
	INTERCOM CALL SWITCH
	SIGNAL BUZZER
	SIGNAL HORN
	VOLUME CONTROL +48" A.F.F.
	HOMERUN TO EQUIPMENT
	ZONE INDICATION
	SPEAKER CONNECTION, NOT INDICATING CABLE PATH

ABBREVIATIONS

A.F.F.	ABOVE FINISHED FLOOR
APP.	APPROXIMATE
C	CONDUIT
C.O.	CONDUIT ONLY
CATV	CABLE TELEVISION
CCTV	CLOSED CIRCUIT TELEVISION
CLG	CEILING MOUNTED
(E)	EXISTING
FACP	FIRE ALARM CONTROL PANEL
FP	FACEPLATE
FS	FLOW SWITCH (SEE FIRE ALARM SYMBOLS)
FSD	FIRE/SMOKE DAMPER
GND	GROUND
I R	INFRARED
JB	JUNCTION BOX
N.I.C.	NOT IN CONTRACT
OFCI	OWNER FURNISHED, CONTRACTOR INSTALLED
OFOI	OWNER FURNISHED, OWNER INSTALLED
P.A.	PUBLIC ADDRESS
P.E.T.	PROTECTIVE ENTRANCE TERMINAL
SD	SMOKE DAMPER
TS	TAMPER SWITCH (SEE FIRE ALARM SYMBOLS)
TTB	TELEPHONE TERMINAL BOARD
TYP.	TYPICAL
U.G.	UNDERGROUND
U.O.N.	UNLESS OTHERWISE NOTED
W.G.	WIRE GUARD
W.P.	WEATHERPROOF
X.P.	EXPLOSION PROOF

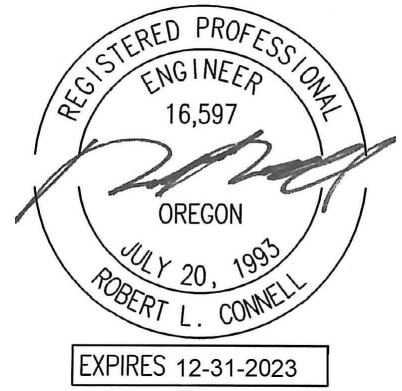
GENERAL NOTES:

- TECHNOLOGY DRAWINGS ARE DIAGRAMMATICAL AND MAY NOT ACCURATELY REFLECT ACTUAL CONSTRUCTION CONDITIONS. THE TECHNOLOGY CONTRACTOR SHALL BE RESPONSIBLE FOR COORDINATING THE INSTALLATION OF ALL TECHNOLOGY EQUIPMENT, WITH ALL TRADES PRIOR TO AND DURING CONSTRUCTION.
- TECHNOLOGY ENTRANCE LOCATION DESIGN IS BASED ON INFORMATION PROVIDED BY THE UTILITY THRU THE DESIGN PROCESS. HOWEVER IT IS UP TO THE CONTRACTOR TO VERIFY CONDITIONS AND REQUIREMENTS HAVE NOT CHANGED PRIOR TO THE INSTALLATION DATE.
- COORDINATE WITH LOCAL UTILITY PROVIDER FOR EXACT SERVICE CONDUIT SIZES AND LOCATION TO ROUTE TO CONDUIT TO.
- CUSTOMER TO PROVIDE ALL TRENCHING AND BACKFILLING. TRENCH TO BE 36 INCHES DEEP AND 30 INCHES WIDE, MEASURED FROM FINAL GRADE.
- CONSULT WITH UTILITY PROVIDER REPRESENTATIVE 2 WEEKS BEFORE STARTING MAIN POWER TRENCHING FOR A PRE-CONSTRUCTION CONFERENCE. INCLUDED IN THIS CONFERENCE WILL BE EXCAVATOR, TECHNOLOGY UTILITY PROVIDER, TELCO, AND CATV.
- THE TECHNOLOGY CONTRACTOR SHALL REFER TO THE ARCHITECTURAL DRAWINGS FOR ALL MOUNTING HEIGHTS AND FINISHES OF DEVICES AND FIXTURES.
- COORDINATE WITH MECHANICAL PLANS FOR LOCATIONS OF SMOKE, FIRE/SMOKE DAMPERS, AND ROOF TOP UNITS REQUIRING CONNECTION TO FIRE ALARM SYSTEM.
- FOR VOICE/DATA OUTLETS PROVIDE A SINGLE GANG MUD-RING WITH A 1" CONDUIT FROM THE TOP OF THE MUD-RING TO ACCESSIBLE CEILING SPACE. TERMINATE CONDUIT WITH END CONNECTORS AND THREAD ON PLASTIC BUSHING FOR CABLE PROTECTION. OUTLET SHALL BE AT THE SAME HEIGHT AS ADJACENT POWER OUTLET AND LESS THAN 18" SEPARATION. COORDINATE WITH ELECTRICAL.
- COORDINATE ALL DEVICE LOCATIONS WITH LATEST ARCHITECTURAL INTERIOR ELEVATIONS TO VERIFY DEVICES WILL NOT BE OBSTRUCTED.
- REFER TO ENLARGED TYPICAL UNIT PLANS (IF PROVIDED) FOR TYPICAL LAYOUTS FOR ALL APARTMENT UNIT TYPES.

FIRE ALARM AND DETECTION SYSTEM SHOWN ON PLAN(S) ARE FOR DESIGN INTENT ONLY. THIS IS A DEFERRED SUBMITTAL SYSTEM REQUIRING THE CONTRACTOR TO COMPLETE THE PERMIT READY DESIGN AND CALCULATIONS AS REQUIRED PER THE AUTHORITY HAVING JURISDICTION. VERIFY BUILDING OCCUPANCY TYPE AND OCCUPANT LOAD WITH ARCHITECTURAL PLANS.



Otak Architects, Inc.
808 SW Third Avenue, Suite 300
Portland, OR 97204
main 503.287.6825
www.otak.com



STAMP

M F I A Consulting Engineers
2007 S.E. Ash St.
Portland, OR 97214
PHN: (503) 234-0548
FAX: (503) 234-0677
INC. WWW.MFIA-ENG.COM
CONTACT:
CONSULTANT

WECOMA PLACE

LINCOLN CITY, OREGON

ELECTRICAL LEGEND & SCHEDULES - LAND USE ISSUE

TITLE

#	DATE	DESCRIPTION
---	------	-------------

REVISIONS

GMA	RLC
DRAWN BY	CHECK BY

PERMIT SET

STATUS

07/08/2022

DATE

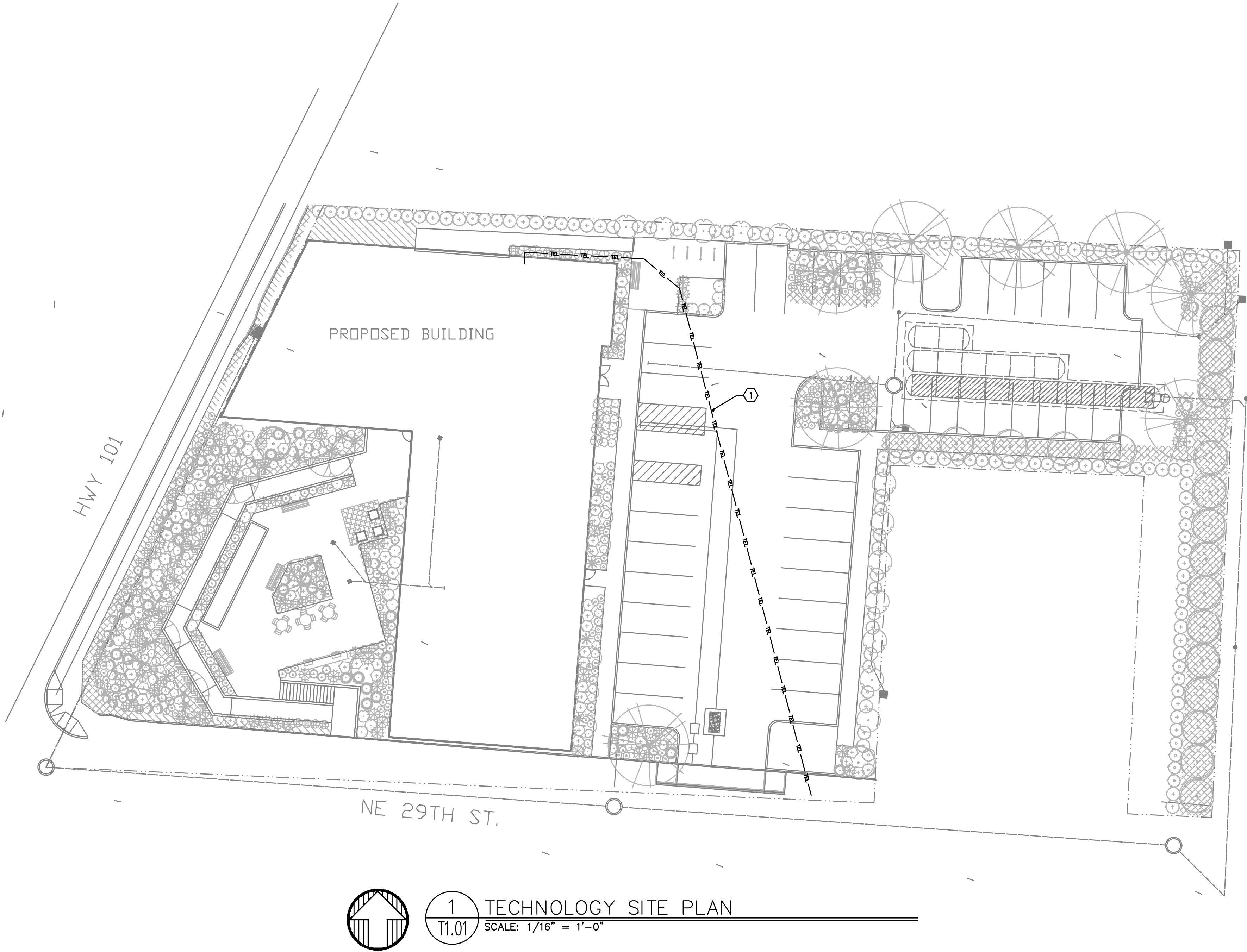
20559

PROJECT NUMBER

T1.00

© 2022 OTAK, INC.

If this drawing is not 24" x 36", it has been reduced/enlarged. Scale accordingly.



GENERAL NOTES:

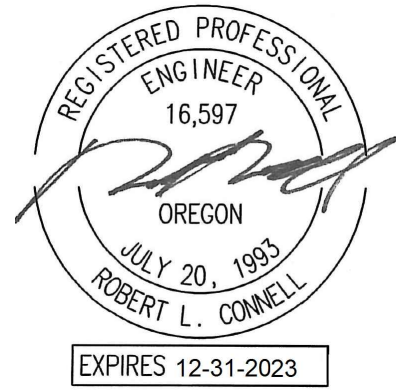
- A. TECHNOLOGY DRAWINGS ARE DIAGRAMMATICAL AND MAY NOT ACCURATELY REFLECT ACTUAL CONSTRUCTION CONDITIONS. THE TECHNOLOGY CONTRACTOR SHALL BE RESPONSIBLE FOR COORDINATING THE INSTALLATION OF ALL TECHNOLOGY EQUIPMENT, WITH ALL TRADES PRIOR TO AND DURING CONSTRUCTION.
- B. TECHNOLOGY ENTRANCE LOCATION DESIGN IS BASED ON INFORMATION PROVIDED BY THE UTILITY THRU THE DESIGN PROCESS. HOWEVER IT IS UP TO THE CONTRACTOR TO VERIFY CONDITIONS AND REQUIREMENTS HAVE NOT CHANGED PRIOR TO THE INSTALLATION DATE.
- C. COORDINATE WITH LOCAL UTILITY PROVIDER FOR EXACT SERVICE CONDUIT SIZES AND LOCATION TO ROUTE TO CONDUIT TO.
- D. CUSTOMER TO PROVIDE ALL TRENCHING AND BACKFILLING. TRENCH TO BE 36 INCHES DEEP AND 30 INCHES WIDE, MEASURED FROM FINAL GRADE.
- E. CONSULT WITH UTILITY PROVIDER REPRESENTATIVE 2 WEEKS BEFORE STARTING MAIN POWER TRENCHING FOR A PRE-CONSTRUCTION CONFERENCE. INCLUDED IN THIS CONFERENCE WILL BE EXCAVATOR, TECHNOLOGY UTILITY PROVIDER, TELCO, AND CATV.

NOTES:

- 1. (2) 2" CONDUITS IN A SHARED TRENCH WITH ELECTRICAL. VERIFY BUILDING ENTRANCE LOCATION WITH TECHNOLOGY FLOOR PLAN AND VERIFY STREET CONNECTION WITH SERVING UTILITY.



Otak Architects, Inc.
808 SW Third Avenue, Suite 300
Portland, OR 97204
main 503.287.6825
www.otak.com



STAMP

M
F
A
INC. Consulting Engineers
2007 S.E. Ash St.
Portland, OR 97214
PHN: (503) 234-0548
FAX: (503) 234-0677
WWW.MFIA-ENG.COM
CONTACT:
CONSULTANT

WECOMA PLACE

LINCOLN CITY, OREGON

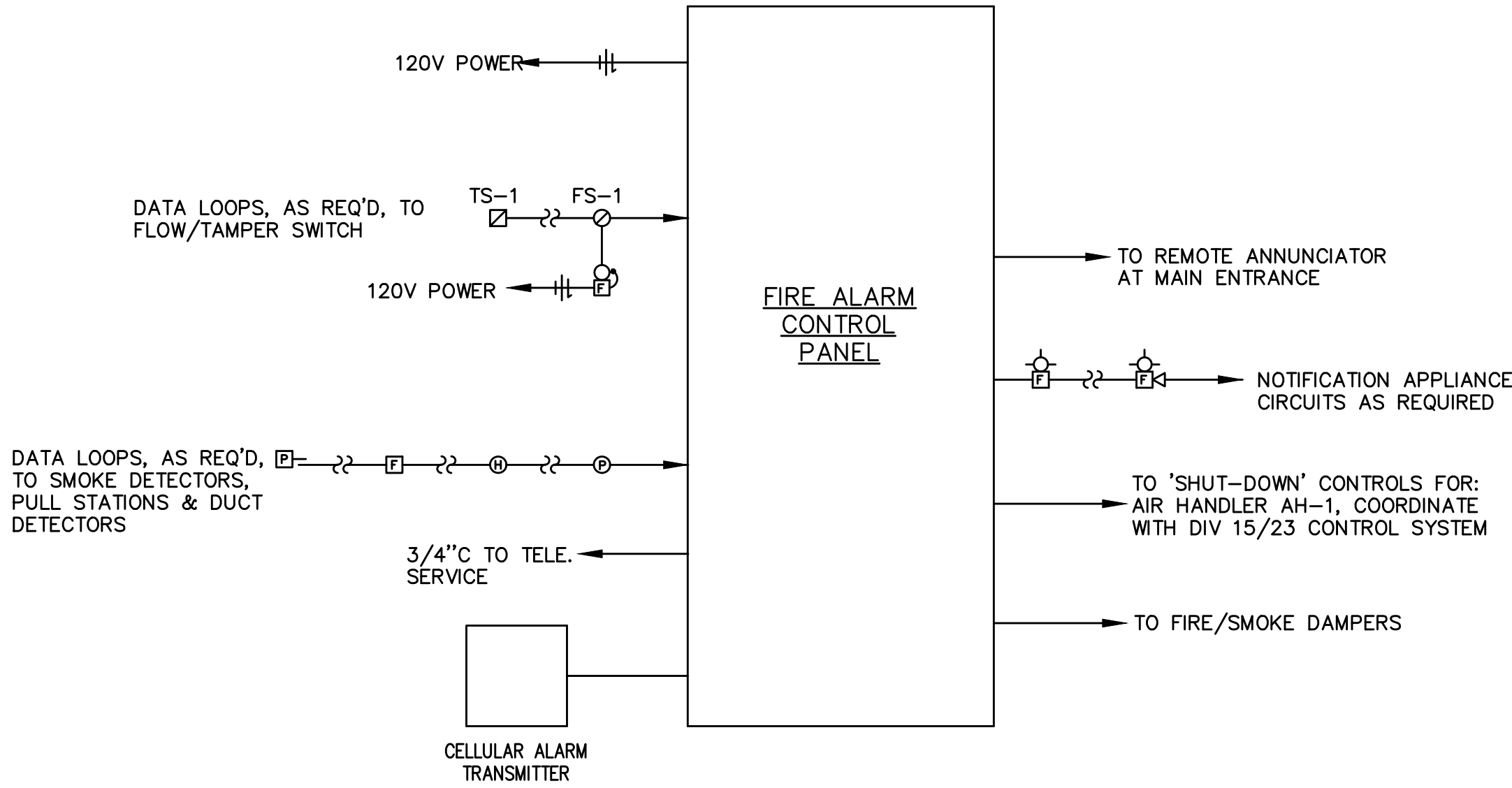
ELECTRICAL SITE PLAN - LAND USE ISSUE

TITLE		
#	DATE	DESCRIPTION

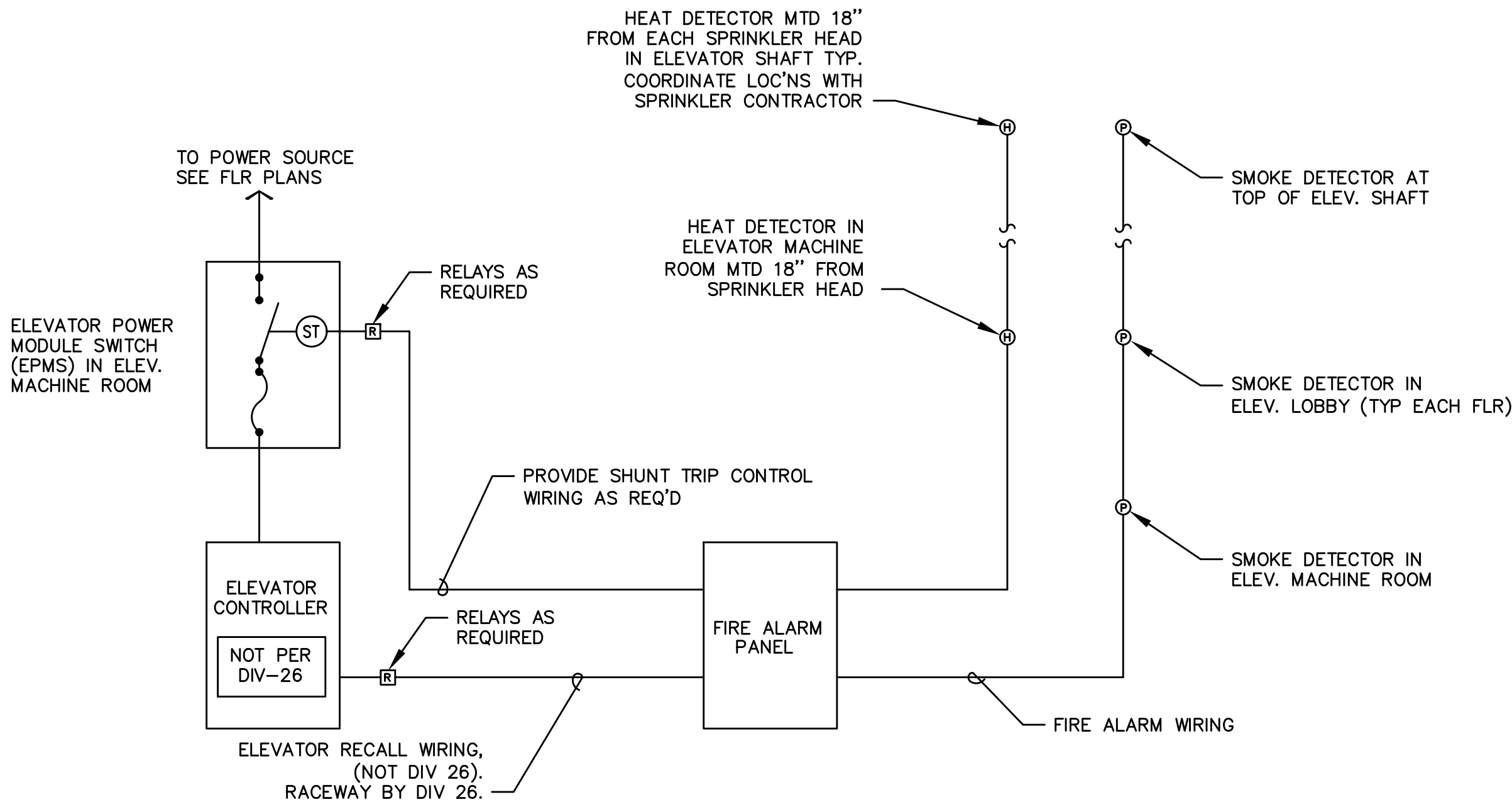
REVISIONS	
GMA	RLC
DRAWN BY	CHECK BY
PERMIT SET	
STATUS	
07/08/2022	
DATE	
20559	
PROJECT NUMBER	

T1.01

© 2022 OTAK, INC.
If this drawing is not 24" x 36", it has been reduced/enlarged. Scale accordingly.



1 FIRE ALARM DETAIL
T2.01 N.T.S.



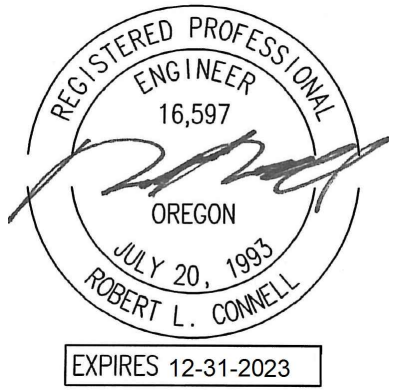
- NOTES
1. CONNECT HEAT DETECTORS IN MACHINE RM AND ELEVATOR SHAFT SUCH THAT AN ALARM CONDITION WILL ACTIVATE SHUNT TRIP DEVICE IN 'EMPS'.
 2. CONNECT SMOKE DETECTORS IN MACHINE ROOM, ELEVATOR LOBBYS, AND ELEVATOR SHAFT SUCH THAT AN ALARM CONDITION WILL ACTIVATE ELEVATOR RECALL SYSTEM. COORDINATE WITH ELEVATOR SUPPLIER.

2 ELEVATOR RECALL & AUTO DISCONNECT DETAIL
T2.01 NTS

FIRE ALARM AND DETECTION SYSTEM SHOWN ON PLAN(S) ARE FOR DESIGN INTENT ONLY. THIS IS A DEFERRED SUBMITTAL SYSTEM REQUIRING THE CONTRACTOR TO COMPLETE THE PERMIT READY DESIGN AND CALCULATIONS AS REQUIRED PER THE AUTHORITY HAVING JURISDICTION. VERIFY BUILDING OCCUPANCY TYPE AND OCCUPANT LOAD WITH ARCHITECTURAL PLANS.



Otak Architects, Inc.
808 SW Third Avenue, Suite 300
Portland, OR 97204
main 503.287.6825
www.otak.com



STAMP

MFA Consulting Engineers
2007 S.E. Ash St.
Portland, OR 97214
PHN: (503) 234-0548
FAX: (503) 234-0677
INC. WWW.MFIA-ENG.COM
CONTACT:
CONSULTANT

WECOMA PLACE

LINCOLN CITY, OREGON

ELECTRICAL LEGEND & SCHEDULES - LAND USE ISSUE

TITLE

DATE DESCRIPTION

REVISIONS

GMA RLC

DRAWN BY CHECK BY

PERMIT SET

STATUS

07/08/2022

DATE

20559

PROJECT NUMBER

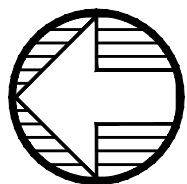
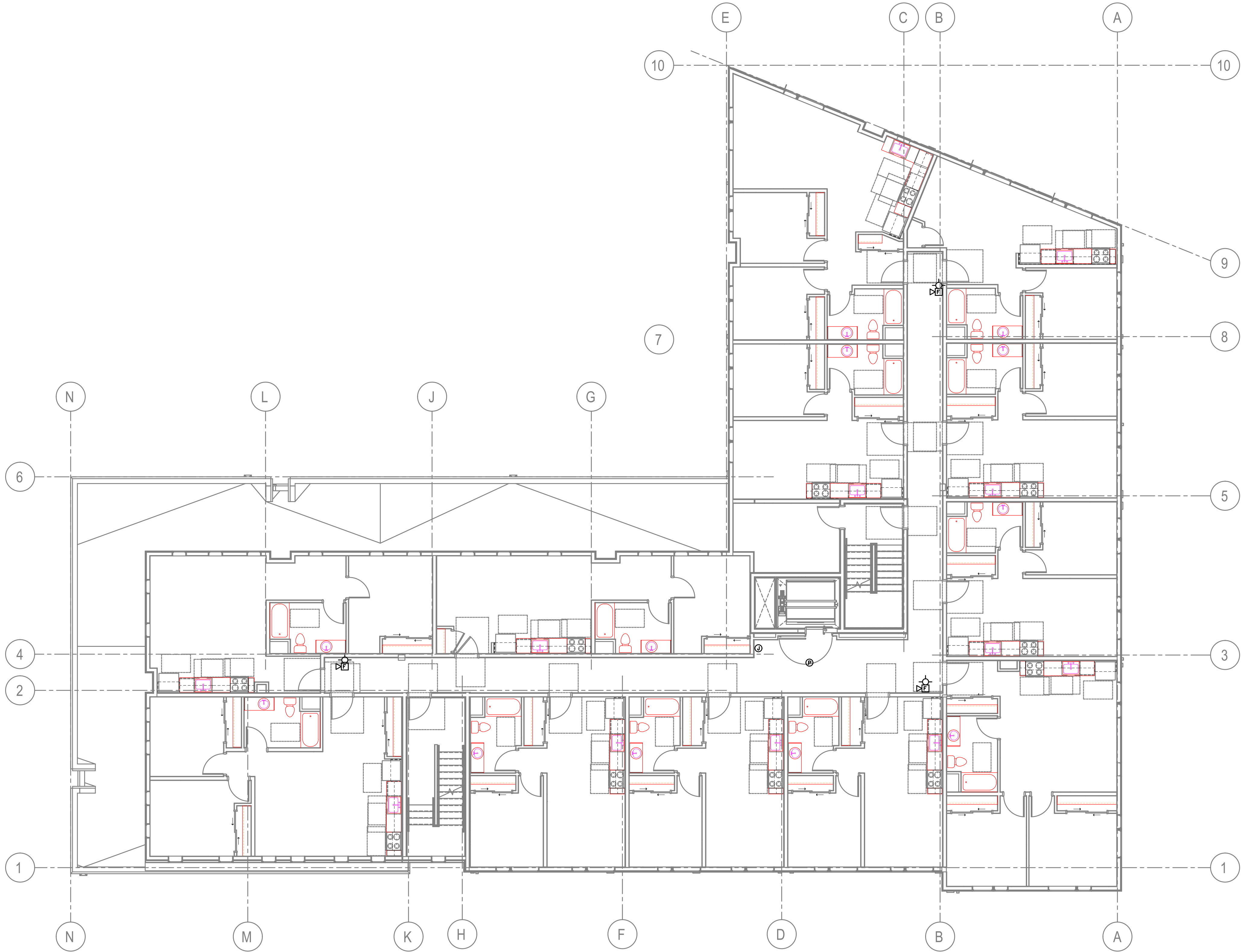
T2.01

© 2022 OTAK, INC.

If this drawing is not 24" x 36", it has been reduced/enlarged. Scale accordingly.



Drawing is not 24" x 36", it has been
d/enlarged. Scale accordingly.



1
T3.02 SECOND FLOOR TECHNOLOGY PLAN
SCALE: 1/8" = 1'-0"

GENERAL NOTES:

- A. TECHNOLOGY DRAWINGS ARE DIAGRAMMATICAL AND MAY NOT ACCURATELY REFLECT ACTUAL CONSTRUCTION CONDITIONS. THE TECHNOLOGY CONTRACTOR SHALL BE RESPONSIBLE FOR COORDINATING THE INSTALLATION OF ALL TECHNOLOGY EQUIPMENT, WITH ALL TRADES PRIOR TO AND DURING CONSTRUCTION.
- B. TECHNOLOGY ENTRANCE LOCATION DESIGN IS BASED ON INFORMATION PROVIDED BY THE UTILITY THRU THE DESIGN PROCESS. HOWEVER IT IS UP TO THE CONTRACTOR TO VERIFY CONDITIONS AND REQUIREMENTS HAVE NOT CHANGED PRIOR TO THE INSTALLATION DATE.
- C. COORDINATE WITH LOCAL UTILITY PROVIDER FOR EXACT SERVICE CONDUIT SIZES AND LOCATION TO ROUTE TO CONDUIT TO.
- D. CUSTOMER TO PROVIDE ALL TRENCHING AND BACKFILLING. TRENCH TO BE 36 INCHES DEEP AND 30 INCHES WIDE, MEASURED FROM FINAL GRADE.
- E. CONSULT WITH UTILITY PROVIDER REPRESENTATIVE 2 WEEKS BEFORE STARTING MAIN POWER TRENCHING FOR A PRE-CONSTRUCTION CONFERENCE. INCLUDED IN THIS CONFERENCE WILL BE EXCAVATOR, TECHNOLOGY UTILITY PROVIDER, TELCO, AND CATV.
- F. THE TECHNOLOGY CONTRACTOR SHALL REFER TO THE ARCHITECTURAL DRAWINGS FOR ALL MOUNTING HEIGHTS AND FINISHES OF DEVICES AND FIXTURES.
- G. COORDINATE WITH MECHANICAL PLANS FOR LOCATIONS OF SMOKE, FIRE/SMOKE DAMPERS, AND ROOF TOP UNITS REQUIRING CONNECTION TO FIRE ALARM SYSTEM.
- H. FOR VOICE/DATA OUTLETS PROVIDE A SINGLE GANG MUD-RING WITH A 1" CONDUIT FROM THE TOP OF THE MUD-RING TO ACCESSIBLE CEILING SPACE. TERMINATE CONDUIT WITH END CONNECTORS AND THREAD ON PLASTIC BUSHING FOR CABLE PROTECTION. OUTLET SHALL BE AT THE SAME HEIGHT AS ADJACENT POWER OUTLET AND LESS THAN 18" SEPARATION. COORDINATE WITH ELECTRICAL.
- I. COORDINATE ALL DEVICE LOCATIONS WITH LATEST ARCHITECTURAL INTERIOR ELEVATIONS TO VERIFY DEVICES WILL NOT BE OBSTRUCTED.
- J. REFER TO ENLARGED TYPICAL UNIT PLANS (IF PROVIDED) FOR TYPICAL LAYOUTS FOR ALL APARTMENT UNIT TYPES.

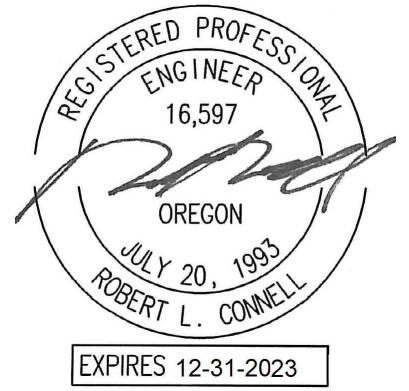
NOTES:

- 1. xxxxxxxxxxxxxxxxxxxxxxxxxxxxxxx
- 2. xxxxxxxxxxxxxxxxxxxxxxxxxxxxxxx

FIRE ALARM AND DETECTION SYSTEM SHOWN ON PLAN(S) ARE FOR DESIGN INTENT ONLY. THIS IS A DEFERRED SUBMITTAL SYSTEM REQUIRING THE CONTRACTOR TO COMPLETE THE PERMIT READY DESIGN AND CALCULATIONS AS REQUIRED PER THE AUTHORITY HAVING JURISDICTION. VERIFY BUILDING OCCUPANCY TYPE AND OCCUPANT LOAD WITH ARCHITECTURAL PLANS.



Otak Architects, Inc.
808 SW Third Avenue, Suite 300
Portland, OR 97204
main 503.287.6825
www.otak.com



STAMP
M Consulting Engineers
F 2007 S.E. Ash St.
I Portland, OR 97214
A PHN: (503) 234-0548
INC. FAX: (503) 234-0677
CONTACT: WWW.MFIA-ENG.COM
CONSULTANT

WECOMA PLACE
LINCOLN CITY, OREGON
SECOND FLOOR POWER PLAN

TITLE		
#	DATE	DESCRIPTION

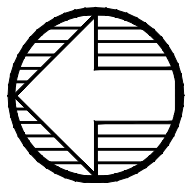
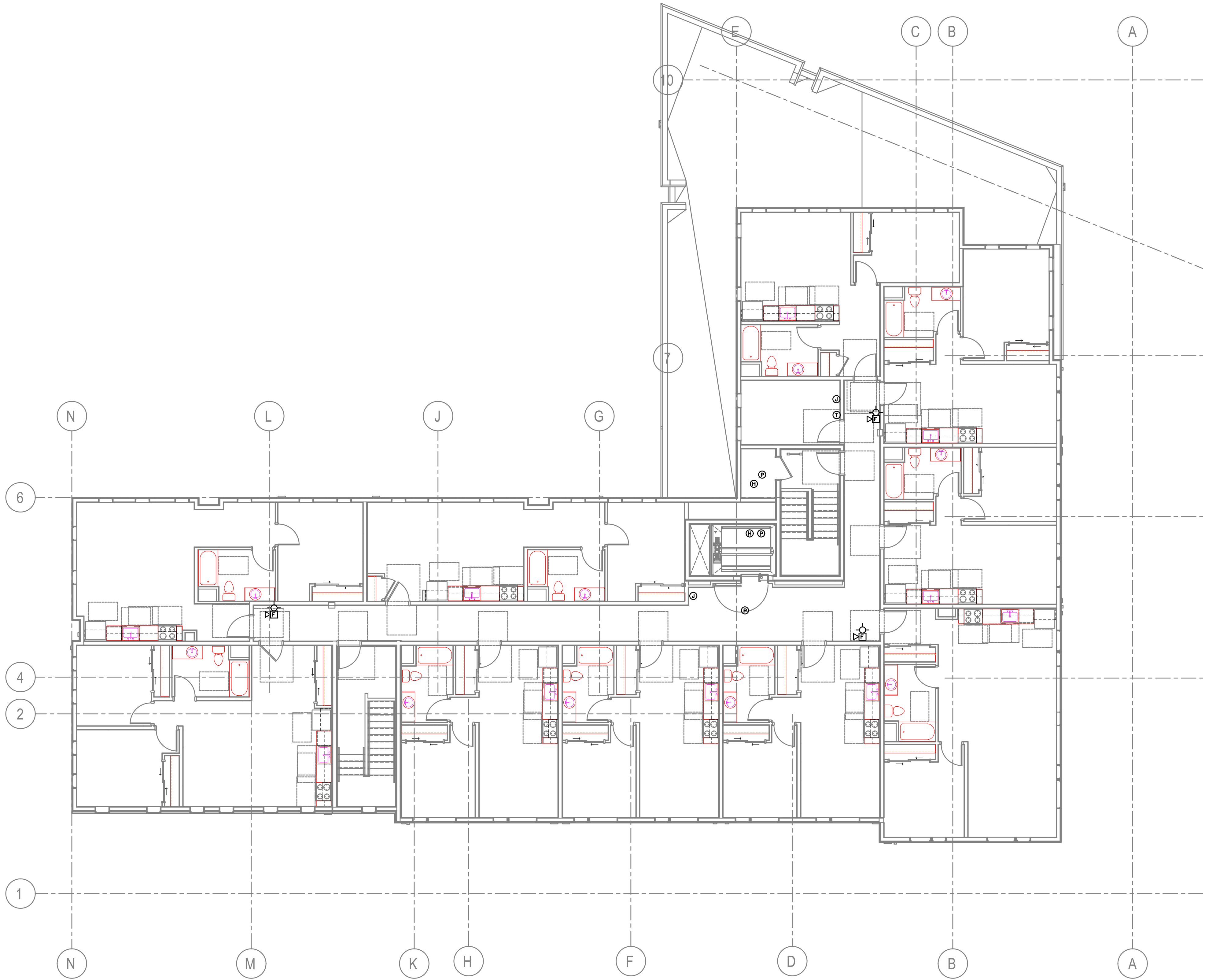
REVISIONS	
GMA	RLC
DRAWN BY	CHECK BY
PERMIT SET	
STATUS	
07/08/2022	
DATE	
20559	
PROJECT NUMBER	

T3.02
© 2022 OTAK, INC.
If this drawing is not 24" x 36", it has been reduced/enlarged. Scale accordingly.



1. xxxxxxxxxxxxxxxxxxxxxxxxxxxxxxxxxxxx
2. xxxxxxxxxxxxxxxxxxxxxxxxxxxxxxxxxxxx

FIRE ALARM AND DETECTION SYSTEM SHOWN ON PLAN(S) ARE FOR DESIGN INTENT ONLY. THIS IS A DEFERRED SUBMITTAL SYSTEM REQUIRING THE CONTRACTOR TO COMPLETE THE PERMIT READY DESIGN AND CALCULATIONS AS REQUIRED PER THE AUTHORITY HAVING JURISDICTION. VERIFY BUILDING OCCUPANCY TYPE AND OCCUPANT LOAD WITH ARCHITECTURAL PLANS.



1
T3.04
FOURTH FLOOR TECHNOLOGY PLAN
SCALE: 1/8" = 1'-0"

GENERAL NOTES:

- A. TECHNOLOGY DRAWINGS ARE DIAGRAMMATICAL AND MAY NOT ACCURATELY REFLECT ACTUAL CONSTRUCTION CONDITIONS. THE TECHNOLOGY CONTRACTOR SHALL BE RESPONSIBLE FOR COORDINATING THE INSTALLATION OF ALL TECHNOLOGY EQUIPMENT, WITH ALL TRADES PRIOR TO AND DURING CONSTRUCTION.
- B. TECHNOLOGY ENTRANCE LOCATION DESIGN IS BASED ON INFORMATION PROVIDED BY THE UTILITY THRU THE DESIGN PROCESS. HOWEVER IT IS UP TO THE CONTRACTOR TO VERIFY CONDITIONS AND REQUIREMENTS HAVE NOT CHANGED PRIOR TO THE INSTALLATION DATE.
- C. COORDINATE WITH LOCAL UTILITY PROVIDER FOR EXACT SERVICE CONDUIT SIZES AND LOCATION TO ROUTE TO CONDUIT TO.
- D. CUSTOMER TO PROVIDE ALL TRENCHING AND BACKFILLING. TRENCH TO BE 36 INCHES DEEP AND 30 INCHES WIDE, MEASURED FROM FINAL GRADE.
- E. CONSULT WITH UTILITY PROVIDER REPRESENTATIVE 2 WEEKS BEFORE STARTING MAIN POWER TRENCHING FOR A PRE-CONSTRUCTION CONFERENCE. INCLUDED IN THIS CONFERENCE WILL BE EXCAVATOR, TECHNOLOGY UTILITY PROVIDER, TELCO, AND CATV.
- F. THE TECHNOLOGY CONTRACTOR SHALL REFER TO THE ARCHITECTURAL DRAWINGS FOR ALL MOUNTING HEIGHTS AND FINISHES OF DEVICES AND FIXTURES.
- G. COORDINATE WITH MECHANICAL PLANS FOR LOCATIONS OF SMOKE, FIRE/SMOKE DAMPERS, AND ROOF TOP UNITS REQUIRING CONNECTION TO FIRE ALARM SYSTEM.
- H. FOR VOICE/DATA OUTLETS PROVIDE A SINGLE GANG MUD-RING WITH A 1" CONDUIT FROM THE TOP OF THE MUD-RING TO ACCESSIBLE CEILING SPACE. TERMINATE CONDUIT WITH END CONNECTORS AND THREAD ON PLASTIC BUSHING FOR CABLE PROTECTION. OUTLET SHALL BE AT THE SAME HEIGHT AS ADJACENT POWER OUTLET AND LESS THAN 18" SEPARATION. COORDINATE WITH ELECTRICAL.
- I. COORDINATE ALL DEVICE LOCATIONS WITH LATEST ARCHITECTURAL INTERIOR ELEVATIONS TO VERIFY DEVICES WILL NOT BE OBSTRUCTED.
- J. REFER TO ENLARGED TYPICAL UNIT PLANS (IF PROVIDED) FOR TYPICAL LAYOUTS FOR ALL APARTMENT UNIT TYPES.

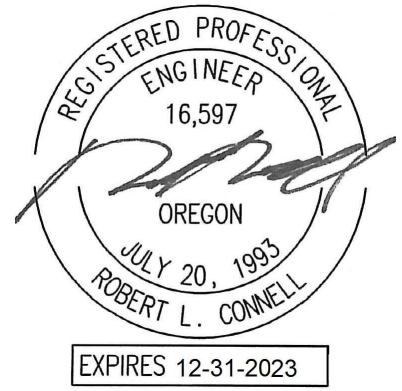
NOTES:

- 1. xxxxxxxxxxxxxxxxxxxxxxxxxxxxxxxxxxx
- 2. xxxxxxxxxxxxxxxxxxxxxxxxxxxxxxxxxxx

FIRE ALARM AND DETECTION SYSTEM SHOWN ON PLAN(S) ARE FOR DESIGN INTENT ONLY. THIS IS A DEFERRED SUBMITTAL SYSTEM REQUIRING THE CONTRACTOR TO COMPLETE THE PERMIT READY DESIGN AND CALCULATIONS AS REQUIRED PER THE AUTHORITY HAVING JURISDICTION. VERIFY BUILDING OCCUPANCY TYPE AND OCCUPANT LOAD WITH ARCHITECTURAL PLANS.



Otak Architects, Inc.
808 SW Third Avenue, Suite 300
Portland, OR 97204
main 503.287.6825
www.otak.com



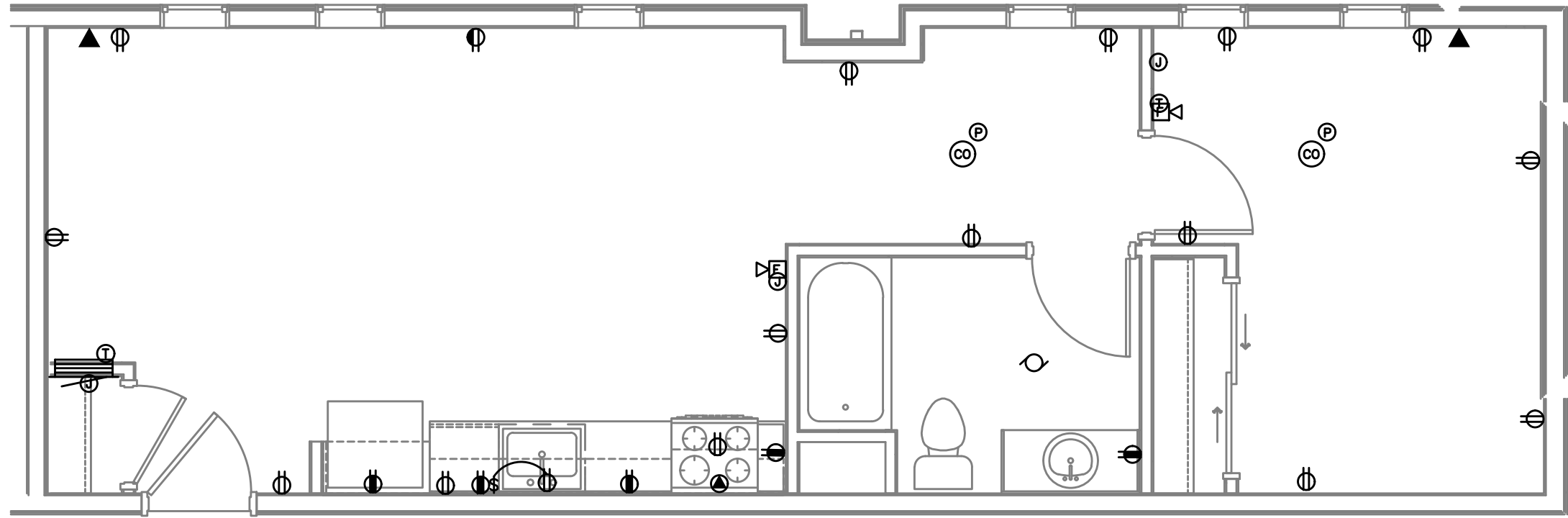
STAMP
M F A Consulting Engineers
2007 S.E. Ash St.
Portland, OR 97214
PHN: (503) 234-0548
FAX: (503) 234-0677
WWW.MFIA-ENG.COM
CONTACT:
CONSULTANT

WECOMA PLACE
LINCOLN CITY, OREGON
FOURTH FLOOR POWER PLAN

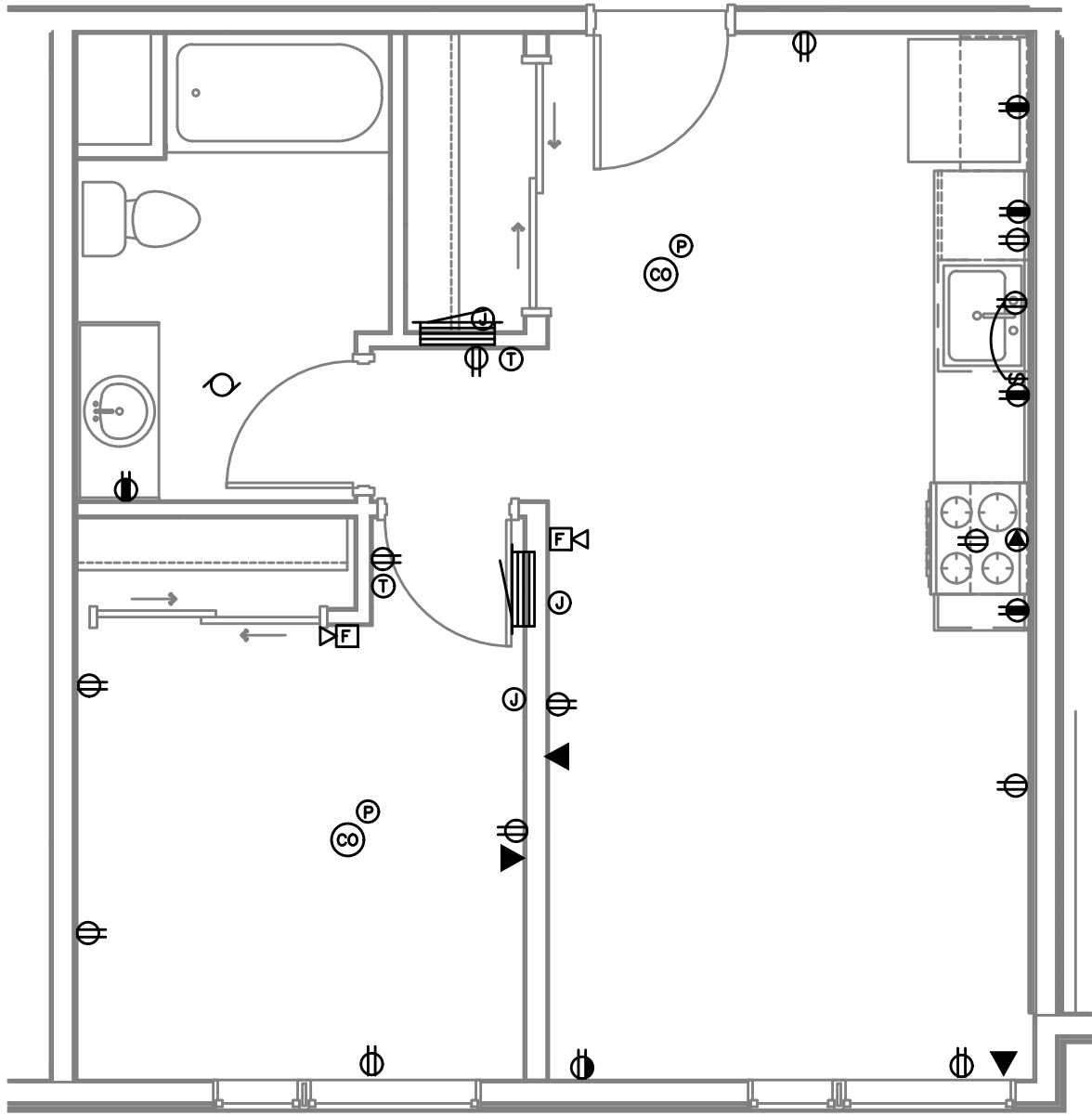
TITLE		
#	DATE	DESCRIPTION

REVISIONS	
GMA	RLC
DRAWN BY	CHECK BY
PERMIT SET	
STATUS	
07/08/2022	
DATE	
20559	
PROJECT NUMBER	

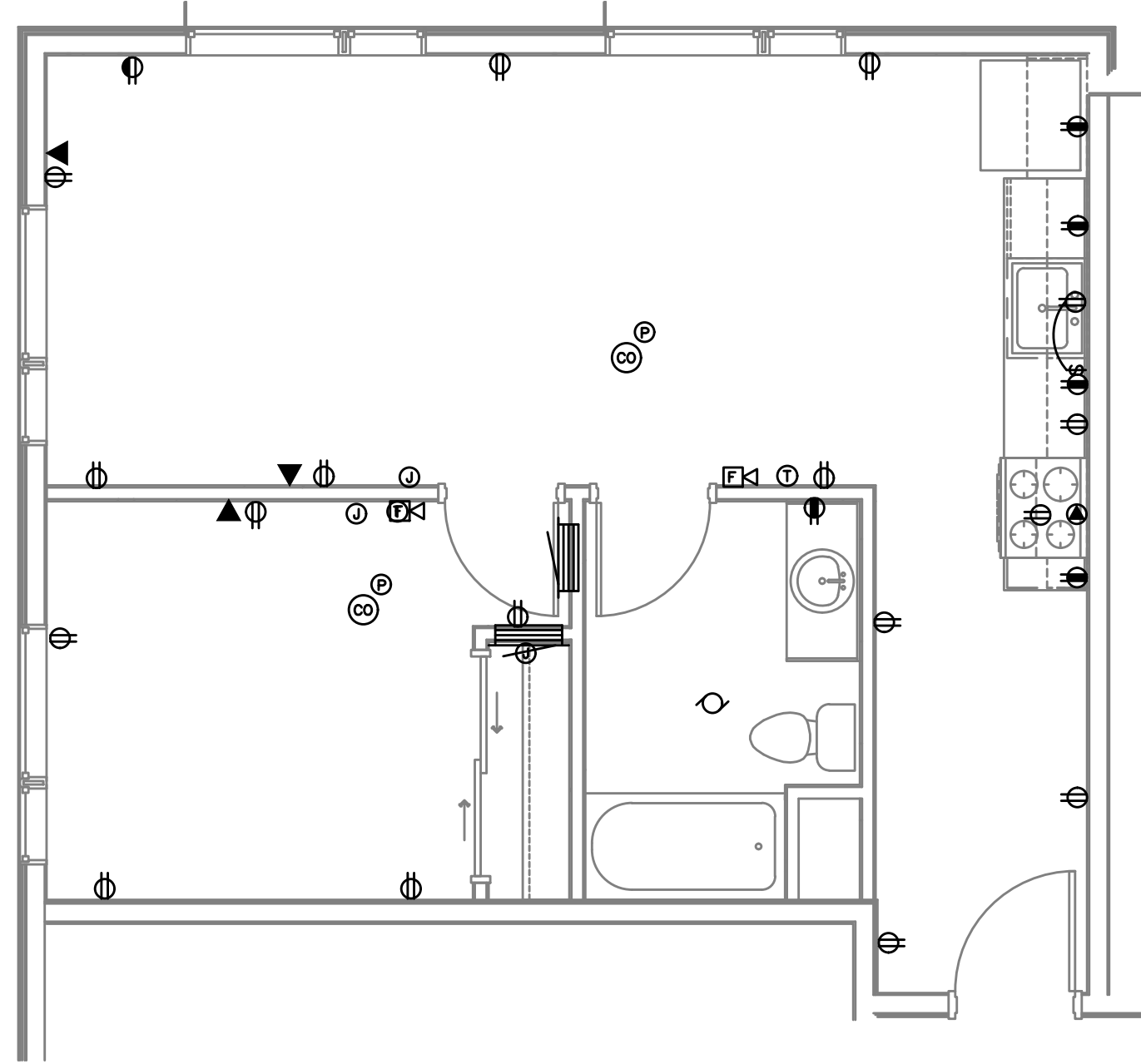
T3.04
© 2022 OTAK, INC.
If this drawing is not 24" x 36", it has been reduced/enlarged. Scale accordingly.



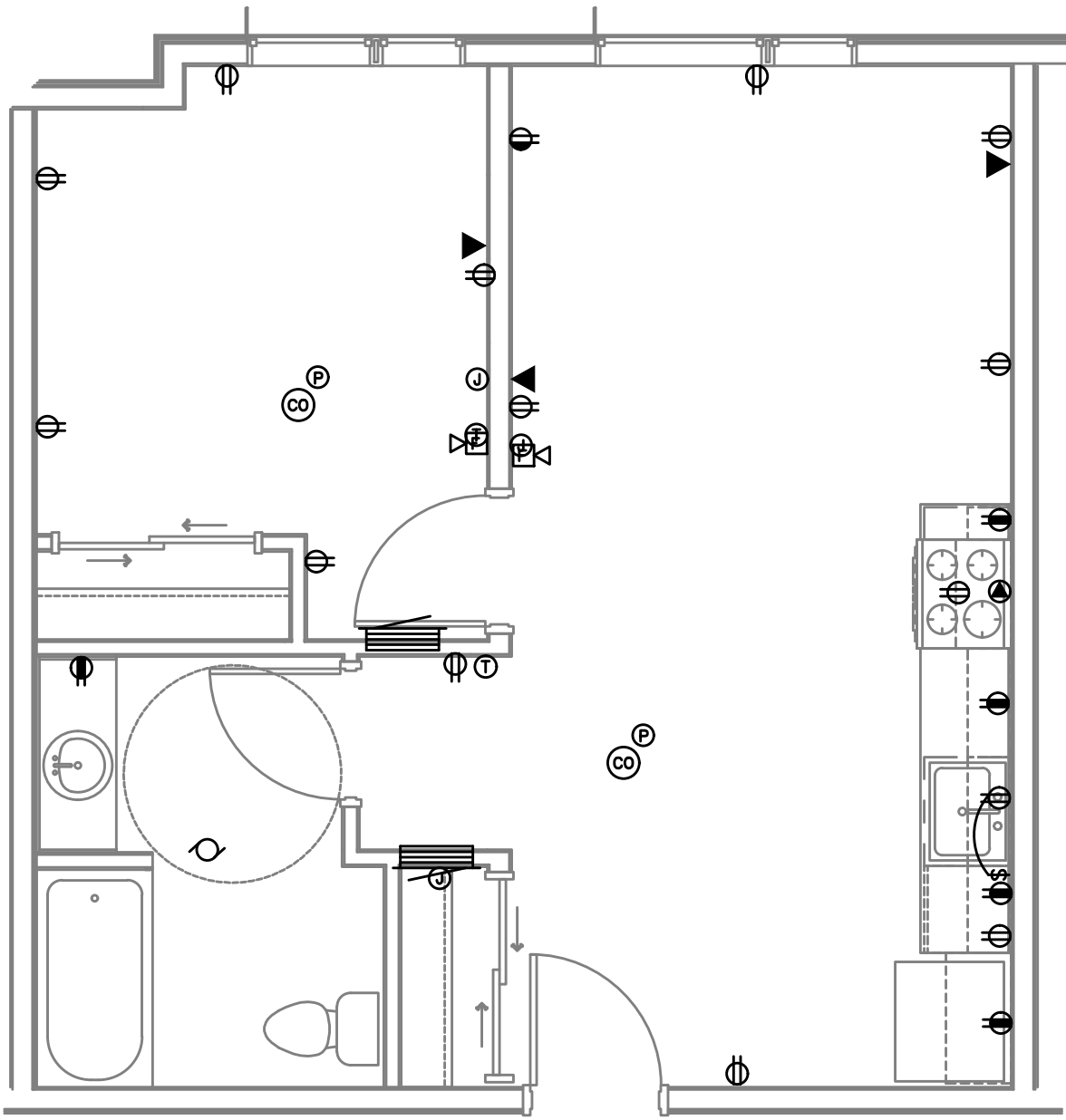
3 TYPICAL TECHNOLOGY — UNIT 1.3 TYPE B
T4.01 SCALE: 1/4" = 1'-0"



1 TYPICAL TECHNOLOGY — UNIT 1.1 TYPE B
T4.01 SCALE: 1/4" = 1'-0"



4 TYPICAL TECHNOLOGY — UNIT 1.4 TYPE B
T4.01 SCALE: 1/4" = 1'-0"



2 TYPICAL TECHNOLOGY — UNIT 1.2 TYPE A
T4.01 SCALE: 1/4" = 1'-0"

GENERAL NOTES:

- A. TECHNOLOGY DRAWINGS ARE DIAGMATICAL AND MAY NOT ACCURATELY REFLECT ACTUAL CONSTRUCTION CONDITIONS. THE TECHNOLOGY CONTRACTOR SHALL BE RESPONSIBLE FOR COORDINATING THE INSTALLATION OF ALL TECHNOLOGY EQUIPMENT, WITH ALL TRADES PRIOR TO AND DURING CONSTRUCTION.
- B. CONSULT WITH UTILITY PROVIDER REPRESENTATIVE TO DETERMINE SIZE OF "SMART PANEL" AND MATERIAL REQUIREMENTS PRIOR TO ROUGH-IN COORDINATION AND INSTALLATION.
- C. THE TECHNOLOGY CONTRACTOR SHALL REFER TO THE ARCHITECTURAL DRAWINGS FOR ALL MOUNTING HEIGHTS AND FINISHES OF DEVICES AND FIXTURES.
- D. FOR VOICE/DATA OUTLETS PROVIDE A SINGLE GANG MUD-RING AT THE SAME HEIGHT AS ADJACENT POWER OUTLET AND LESS THAN 18" SEPARATION. COORDINATE WITH ELECTRICAL.
- E. COORDINATE ALL DEVICE LOCATIONS WITH LATEST ARCHITECTURAL INTERIOR ELEVATIONS TO VERIFY DEVICES WILL NOT BE OBSTRUCTED.

FIRE ALARM AND DETECTION SYSTEM SHOWN ON PLAN(S) ARE FOR DESIGN INTENT ONLY. THIS IS A DEFERRED SUBMITTAL SYSTEM REQUIRING THE CONTRACTOR TO COMPLETE THE PERMIT READY DESIGN AND CALCULATIONS AS REQUIRED PER THE AUTHORITY HAVING JURISDICTION. VERIFY BUILDING OCCUPANCY TYPE AND OCCUPANT LOAD WITH ARCHITECTURAL PLANS.



Otak Architects, Inc.
808 SW Third Avenue, Suite 300
Portland, OR 97204
main 503.287.6825
www.otak.com



STAMP

M
F
I
A
Consulting Engineers
2007 S.E. Ash St.
Portland, OR 97214
PHN: (503) 234-0548
FAX: (503) 234-0677
WWW.MFIA-ENG.COM
CONTACT:
CONSULTANT

WECOMA PLACE

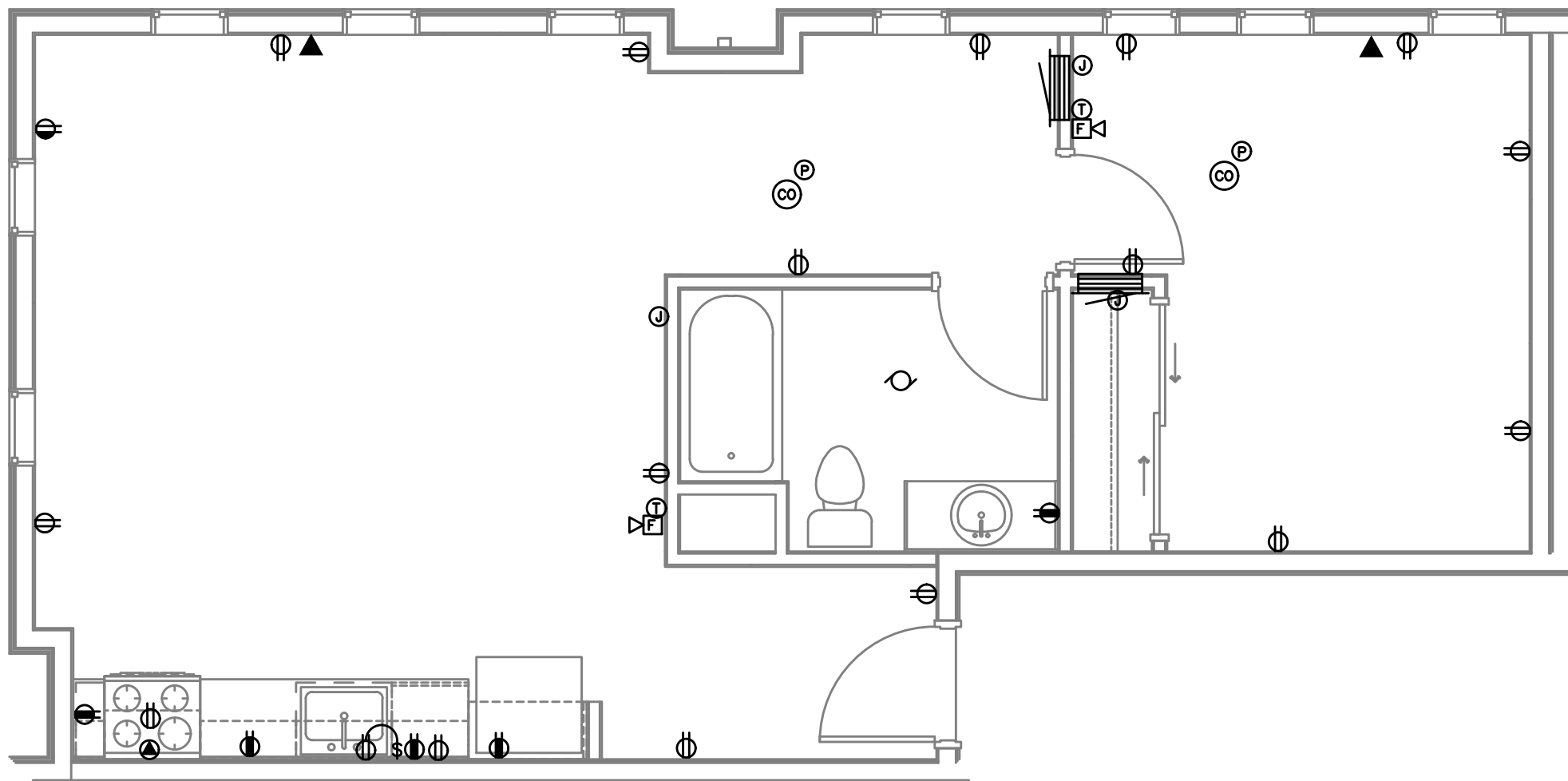
LINCOLN CITY, OREGON

TYPICAL DWELLING UNIT POWER PLANS

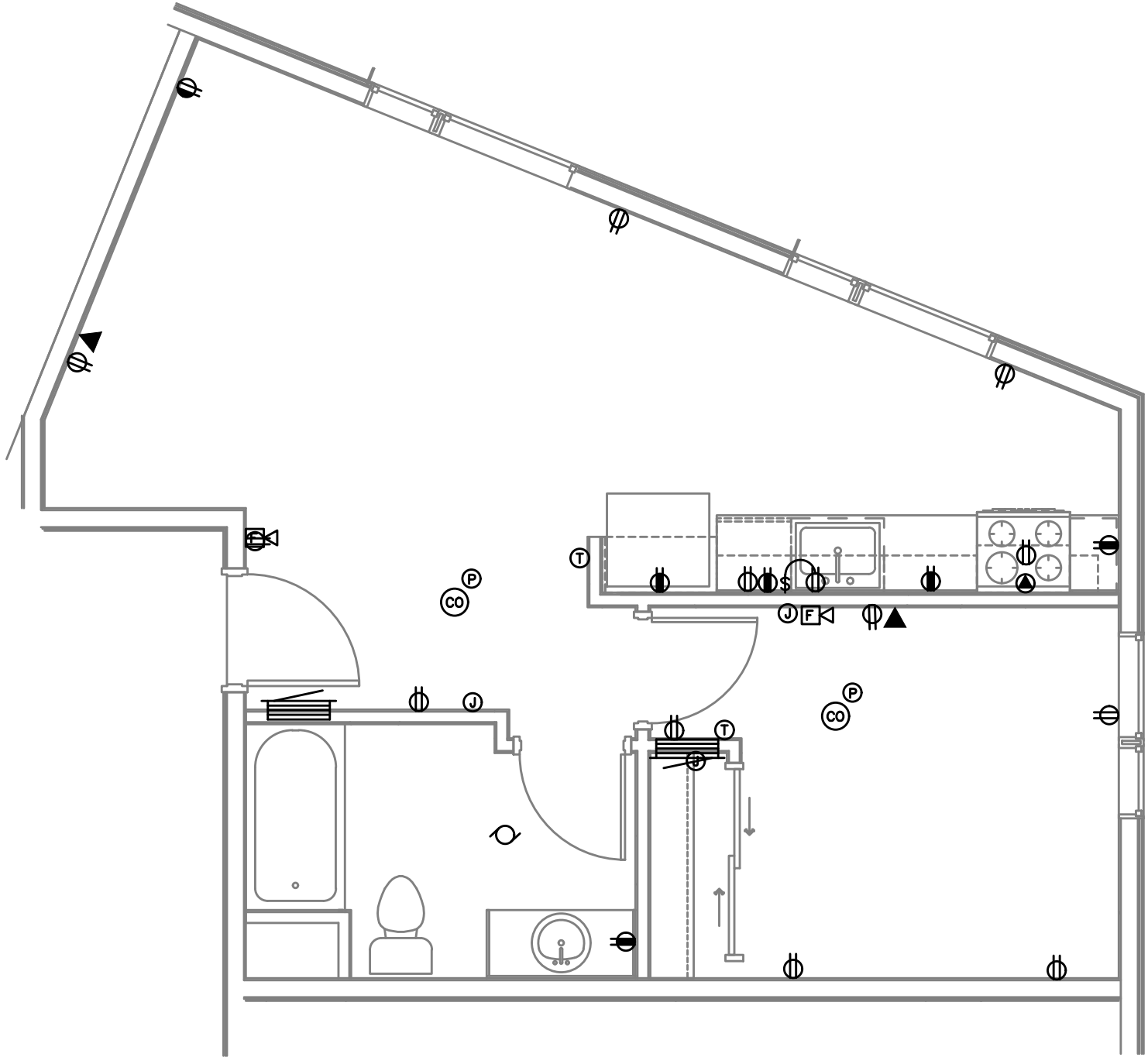
TITLE		
#	DATE	DESCRIPTION
REVISIONS		
GMA	RLC	
DRAWN BY	CHECK BY	
PERMIT SET		
STATUS		
07/08/2022		
DATE		
20559		
PROJECT NUMBER		

T4.01

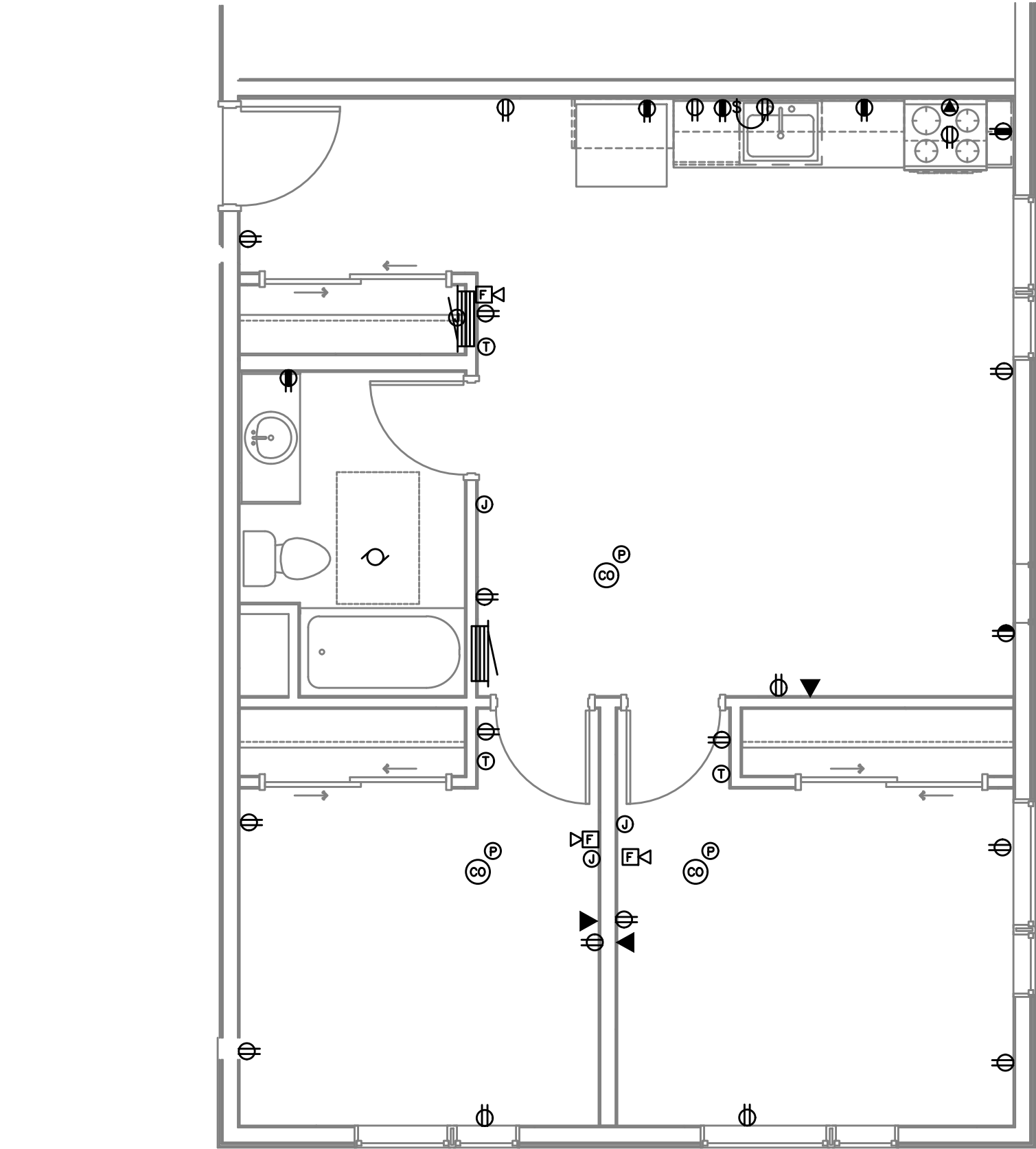
© 2022 OTAK, INC.
If this drawing is not 24" x 36", it has been reduced/enlarged. Scale accordingly.



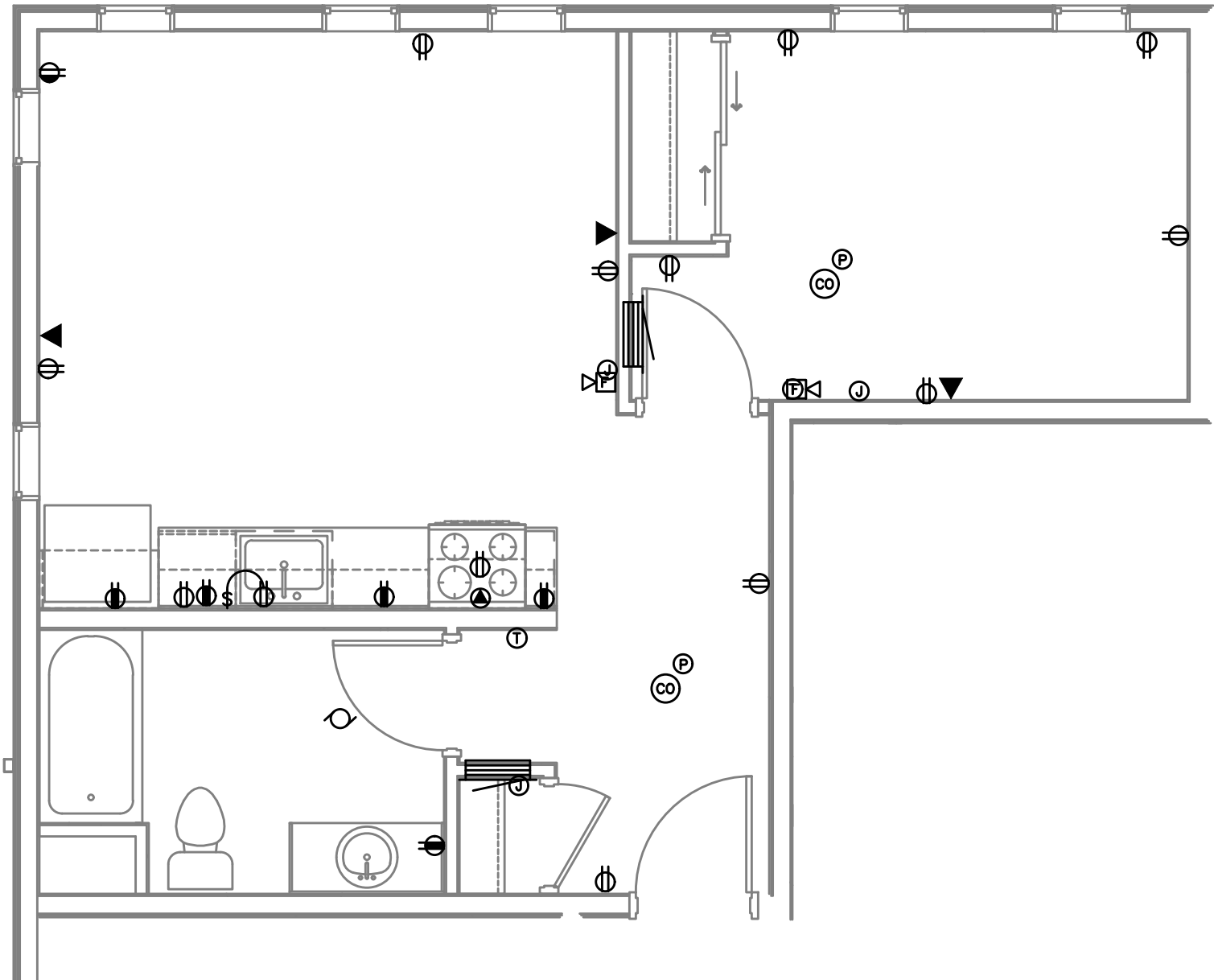
3
T4.02
TYPICAL TECHNOLOGY — UNIT 1.7 TYPE B
SCALE: 1/4" = 1'-0"



1
T4.02
TYPICAL TECHNOLOGY — UNIT 1.5 TYPE B
SCALE: 1/4" = 1'-0"



4
T4.02
TYPICAL TECHNOLOGY — UNIT 2.1 TYPE B
SCALE: 1/4" = 1'-0"



2
T4.02
TYPICAL TECHNOLOGY — UNIT 1.6 TYPE B
SCALE: 1/4" = 1'-0"

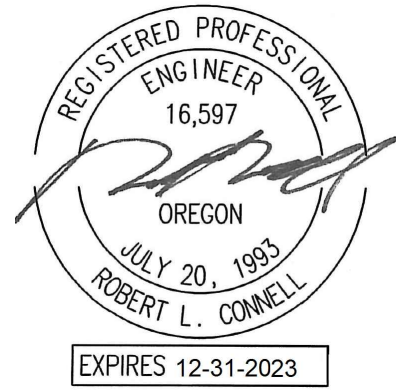
GENERAL NOTES:

- A. TECHNOLOGY DRAWINGS ARE DIAGRAMMATICAL AND MAY NOT ACCURATELY REFLECT ACTUAL CONSTRUCTION CONDITIONS. THE TECHNOLOGY CONTRACTOR SHALL BE RESPONSIBLE FOR COORDINATING THE INSTALLATION OF ALL TECHNOLOGY EQUIPMENT, WITH ALL TRADES PRIOR TO AND DURING CONSTRUCTION.
- B. CONSULT WITH UTILITY PROVIDER REPRESENTATIVE TO DETERMINE SIZE OF "SMART PANEL" AND MATERIAL REQUIREMENTS PRIOR TO ROUGH-IN COORDINATION AND INSTALLATION.
- C. THE TECHNOLOGY CONTRACTOR SHALL REFER TO THE ARCHITECTURAL DRAWINGS FOR ALL MOUNTING HEIGHTS AND FINISHES OF DEVICES AND FIXTURES.
- D. FOR VOICE/DATA OUTLETS PROVIDE A SINGLE GANG MUD-RING AT THE SAME HEIGHT AS ADJACENT POWER OUTLET AND LESS THAN 18" SEPARATION. COORDINATE WITH ELECTRICAL.
- E. COORDINATE ALL DEVICE LOCATIONS WITH LATEST ARCHITECTURAL INTERIOR ELEVATIONS TO VERIFY DEVICES WILL NOT BE OBSTRUCTED.

FIRE ALARM AND DETECTION SYSTEM SHOWN ON PLAN(S) ARE FOR DESIGN INTENT ONLY. THIS IS A DEFERRED SUBMITTAL SYSTEM REQUIRING THE CONTRACTOR TO COMPLETE THE PERMIT READY DESIGN AND CALCULATIONS AS REQUIRED PER THE AUTHORITY HAVING JURISDICTION. VERIFY BUILDING OCCUPANCY TYPE AND OCCUPANT LOAD WITH ARCHITECTURAL PLANS.



Otak Architects, Inc.
808 SW Third Avenue, Suite 300
Portland, OR 97204
main 503.287.6825
www.otak.com



STAMP

M F I A Consulting Engineers
2007 S.E. Ash St.
Portland, OR 97214
PHN: (503) 234-0548
FAX: (503) 234-0677
WWW.MFIA-ENG.COM
CONTACT:
CONSULTANT

WECOMA PLACE

LINCOLN CITY, OREGON

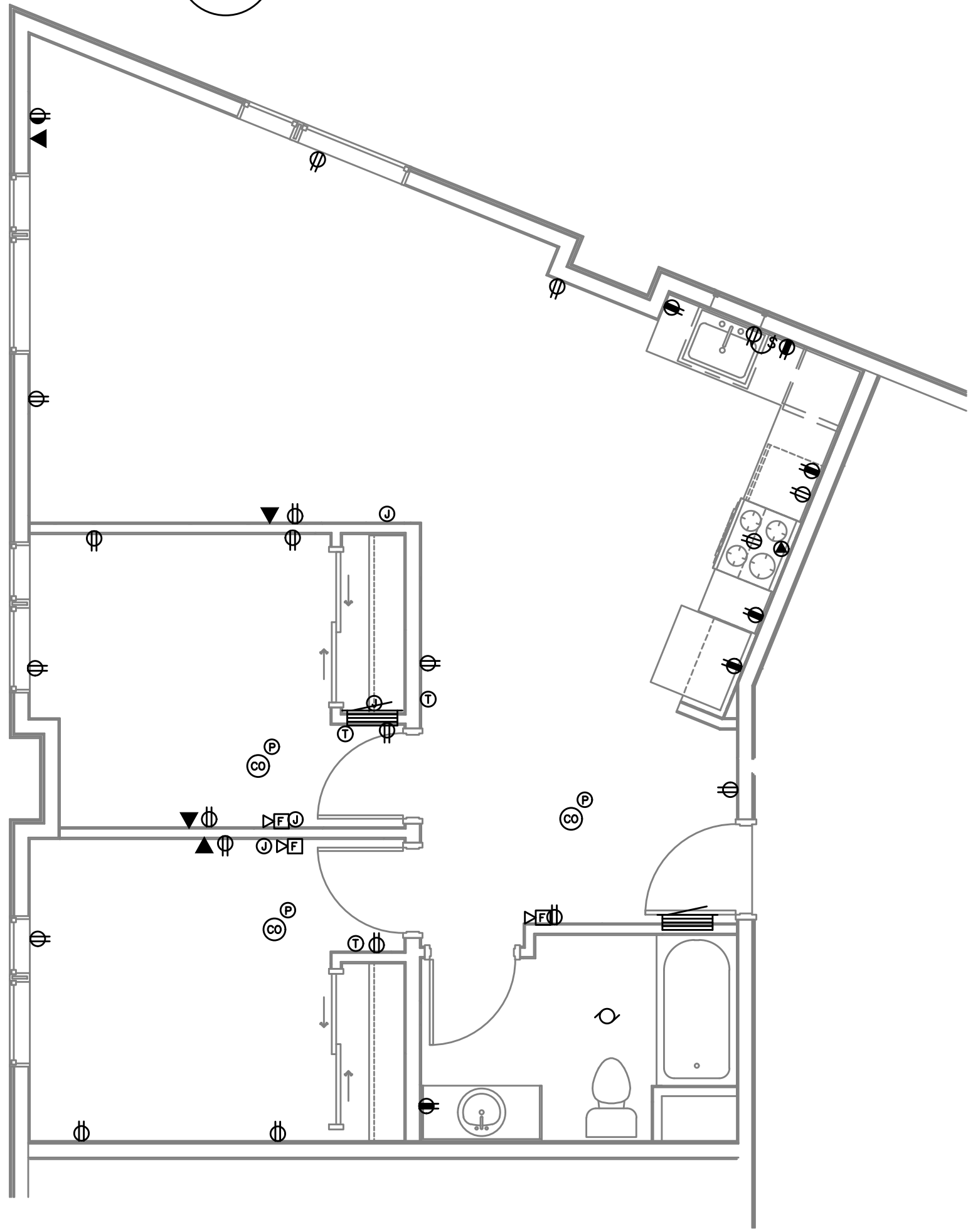
TYPICAL DWELLING UNIT POWER PLANS

TITLE		
#	DATE	DESCRIPTION

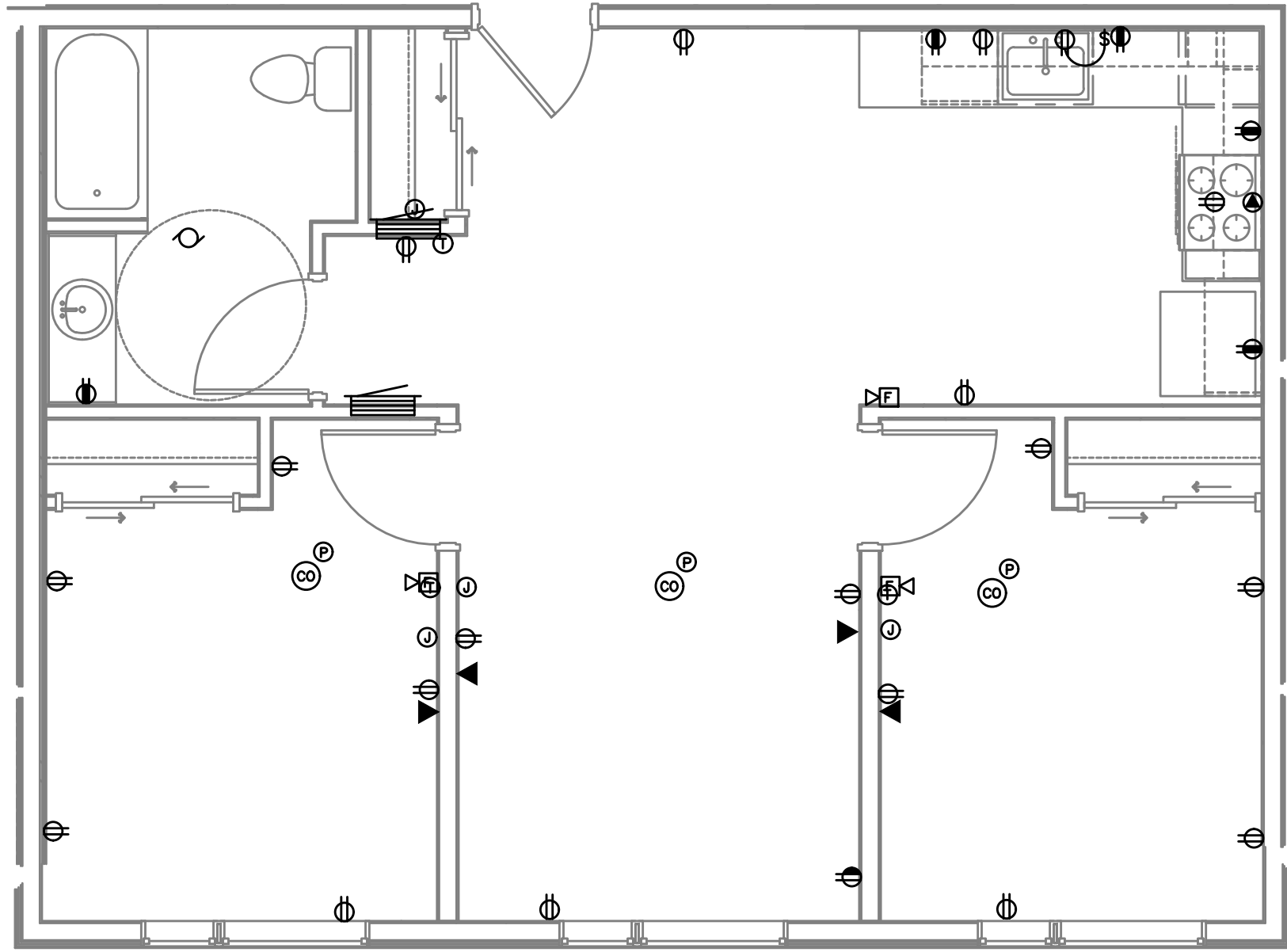
REVISIONS	
GMA	RLC
DRAWN BY	CHECK BY
PERMIT SET	
STATUS	
07/08/2022	
DATE	
20559	
PROJECT NUMBER	

T4.02

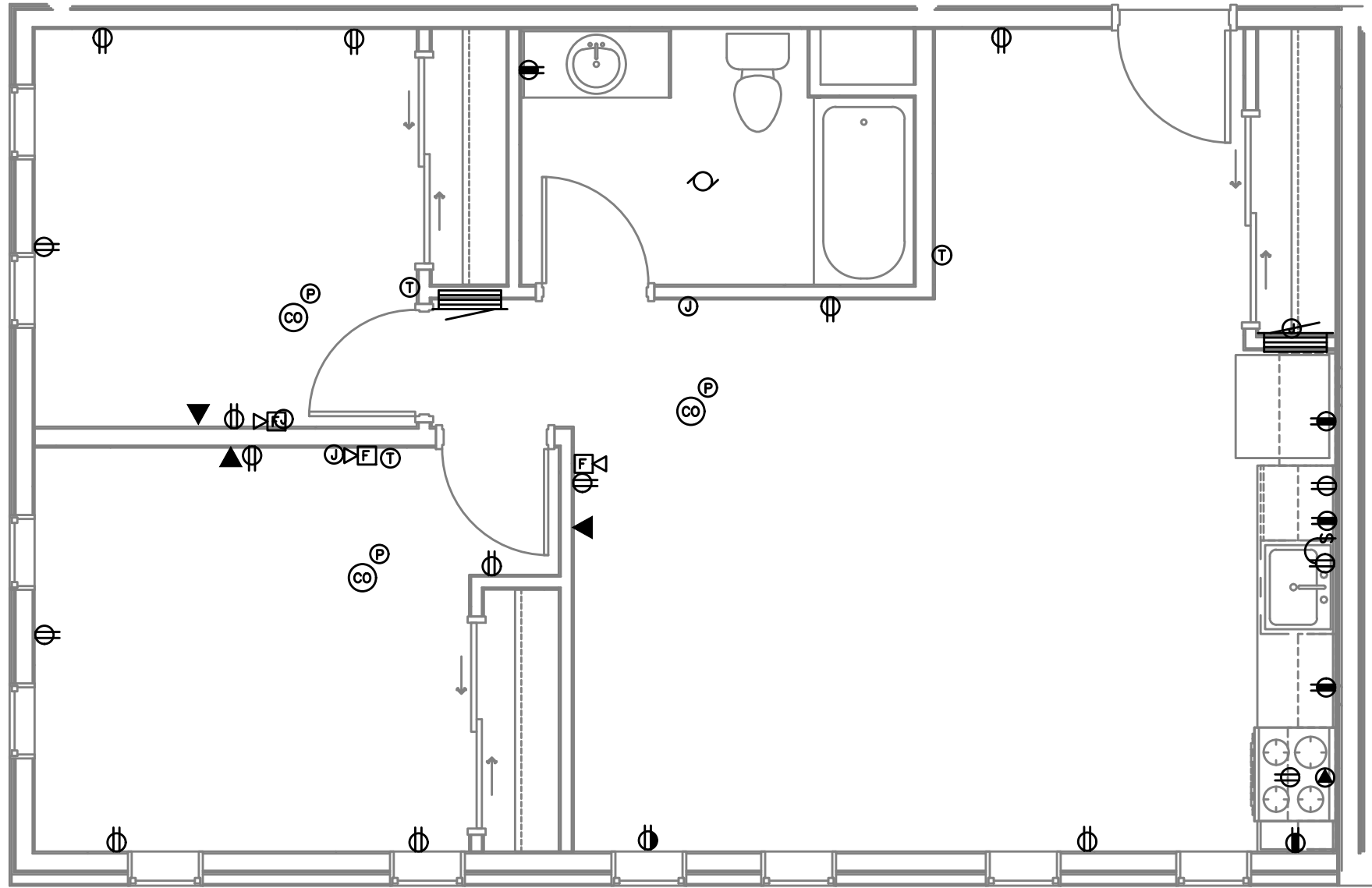
© 2022 OTAK, INC.
If this drawing is not 24" x 36", it has been reduced/enlarged. Scale accordingly.



3
T4.03
TYPICAL TECHNOLOGY – UNIT 2.4 TYPE B
SCALE: 1/4" = 1'-0"

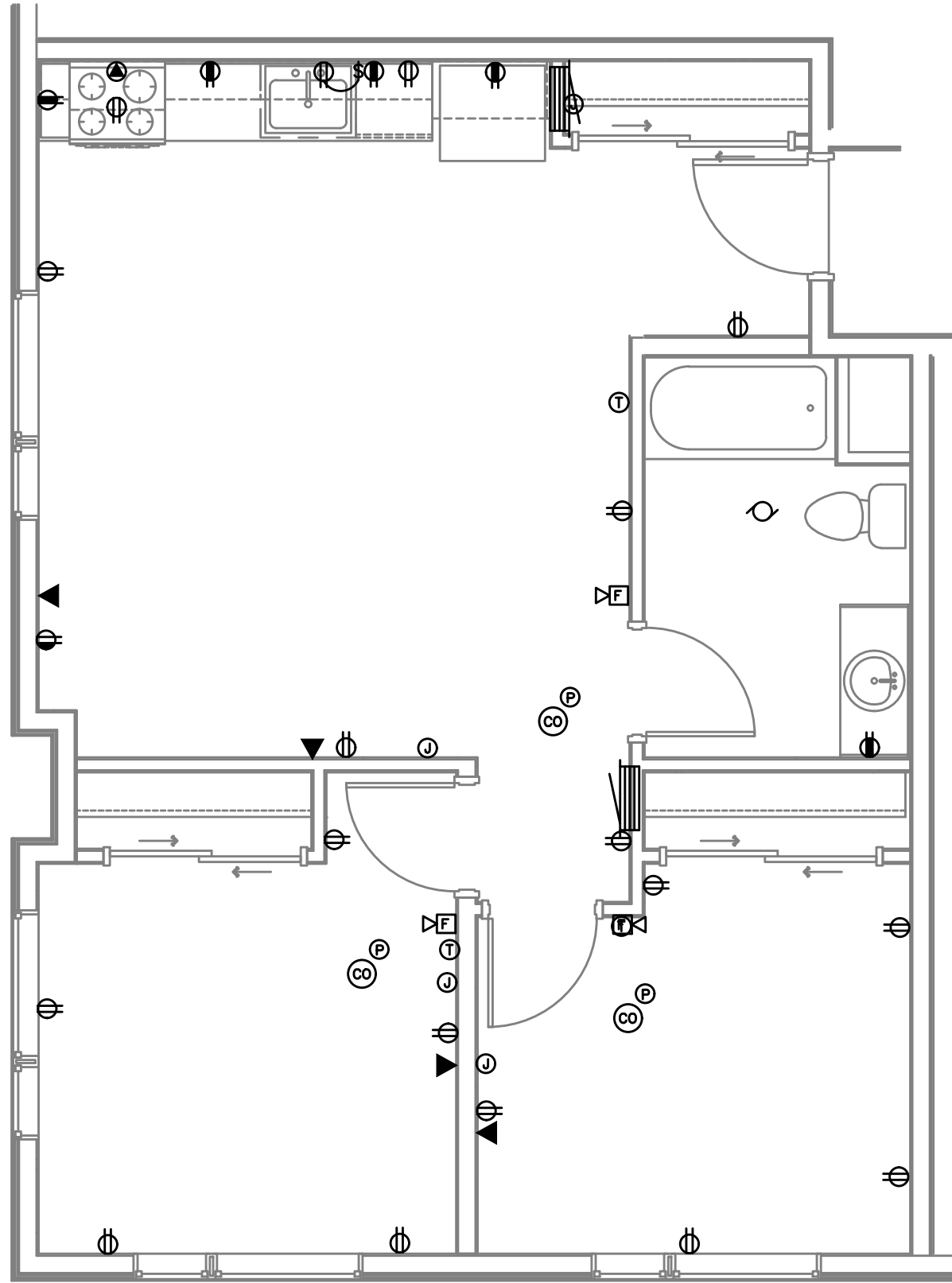


1
T4.03
TYPICAL TECHNOLOGY – UNIT 2.2 TYPE A
SCALE: 1/4" = 1'-0"



4
T4.03
TYPICAL TECHNOLOGY – UNIT 2.5 TYPE B
SCALE: 1/4" = 1'-0"

2
T4.03
TYPICAL TECHNOLOGY – UNIT 2.3 TYPE B
SCALE: 1/4" = 1'-0"



GENERAL NOTES:

- TECHNOLOGY DRAWINGS ARE DIAGRAMMATICAL AND MAY NOT ACCURATELY REFLECT ACTUAL CONSTRUCTION CONDITIONS. THE TECHNOLOGY CONTRACTOR SHALL BE RESPONSIBLE FOR COORDINATING THE INSTALLATION OF ALL TECHNOLOGY EQUIPMENT, WITH ALL TRADES PRIOR TO AND DURING CONSTRUCTION.
- CONSULT WITH UTILITY PROVIDER REPRESENTATIVE TO DETERMINE SIZE OF "SMART PANEL" AND MATERIAL REQUIREMENTS PRIOR TO ROUGH-IN COORDINATION AND INSTALLATION.
- THE TECHNOLOGY CONTRACTOR SHALL REFER TO THE ARCHITECTURAL DRAWINGS FOR ALL MOUNTING HEIGHTS AND FINISHES OF DEVICES AND FIXTURES.
- FOR VOICE/DATA OUTLETS PROVIDE A SINGLE GANG MUD-RING AT THE SAME HEIGHT AS ADJACENT POWER OUTLET AND LESS THAN 18" SEPARATION. COORDINATE WITH ELECTRICAL.
- COORDINATE ALL DEVICE LOCATIONS WITH LATEST ARCHITECTURAL INTERIOR ELEVATIONS TO VERIFY DEVICES WILL NOT BE OBSTRUCTED.

FIRE ALARM AND DETECTION SYSTEM SHOWN ON PLAN(S) ARE FOR DESIGN INTENT ONLY. THIS IS A DEFERRED SUBMITTAL SYSTEM REQUIRING THE CONTRACTOR TO COMPLETE THE PERMIT READY DESIGN AND CALCULATIONS AS REQUIRED PER THE AUTHORITY HAVING JURISDICTION. VERIFY BUILDING OCCUPANCY TYPE AND OCCUPANT LOAD WITH ARCHITECTURAL PLANS.



Otak Architects, Inc.
808 SW Third Avenue, Suite 300
Portland, OR 97204
main 503.287.6825
www.otak.com



STAMP

M F I A Consulting Engineers
2007 S.E. Ash St.
Portland, OR 97214
PHN: (503) 234-0548
FAX: (503) 234-0677
WWW.MFIA-ENG.COM
CONTACT:
CONSULTANT

WECOMA PLACE
LINCOLN CITY, OREGON

TYPICAL DWELLING UNIT POWER PLANS

TITLE

DATE DESCRIPTION

REVISIONS

GMA RLC

DRAWN BY CHECK BY

PERMIT SET

STATUS

07/08/2022

DATE

20559

PROJECT NUMBER

T4.03

© 2022 OTAK, INC.

If this drawing is not 24" x 36", it has been reduced/enlarged. Scale accordingly.