

1 MECHANICAL FIRST FLOOR PLAN - SOUTH  
 M2.0A SCALE: 1/8" = 1'-0"

**MFI**  
 Consulting Engineers  
 2007 S.E. Ash St.  
 Portland, OR 97214  
 PHN: (503) 234-0548  
 FAX: (503) 234-0677  
 WWW.MFI-ENG.COM  
 CONTACT: TAKAKO BAKER

**KING+PARKS MULTI-FAMILY RESIDENCES**

PROJECT SITE: NE Martin Luther King Jr. Boulevard & N Rosa Parks Way  
 OWNER: Portland Community Reinvestment Initiatives Inc. (PCRI)  
 6329 NE Martin Luther King Jr. Blvd. Portland, Oregon 97211

PROJECT NO. 16-0602  
 ISSUE DATE 01.05.2017

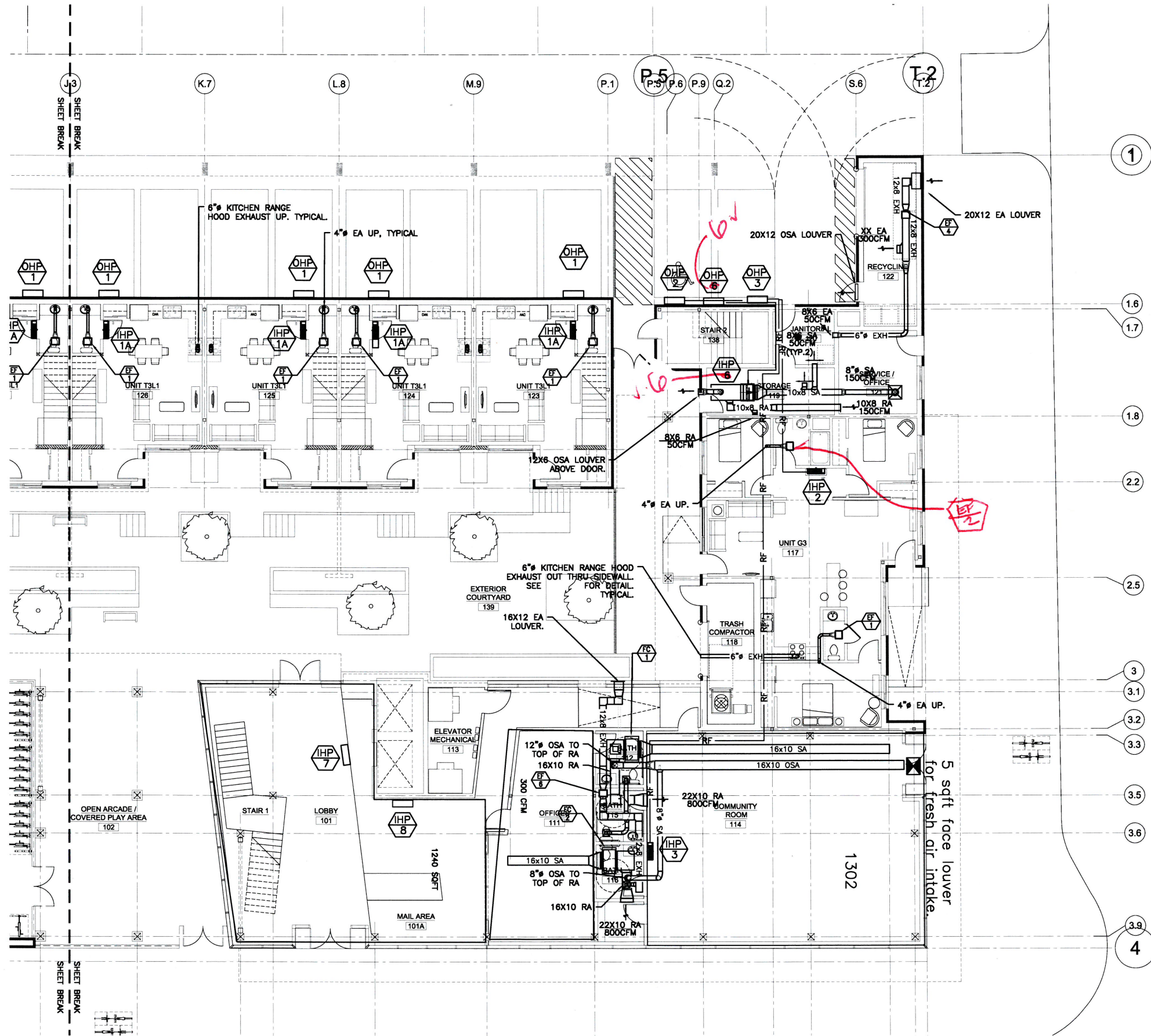
SHEET  
 MECHANICAL 1ST  
 FLOOR PLAN - SOUTH  
**M2.0A**

NOT FOR CONSTRUCTION  
**PRELIMINARY**  
 © MERRYMAN BARNES ARCHITECTS, INC.



MERRYMAN BARNES ARCHITECTS 4713 VALUWA AVE SUITE 304 PORTLAND, OREGON 97217 P. 503.222.3753  
 WWW.MERRYMANBARNESARCHITECTS.COM





1 MECHANICAL FIRST FLOOR PLAN - NORTH  
 M2.0B SCALE: 1/16" = 1'-0"

**KING+PARKS MULTI-FAMILY RESIDENCES**

PROJECT SITE: NE Martin Luther King Jr. Boulevard & N Rosa Parks Way  
 OWNER: Portland Community Reinvestment Initiatives Inc. (PCRI)  
 6329 NE Martin Luther King Jr. Blvd. Portland, Oregon 97211



MERRYMAN BARNES ARCHITECTS 4713 N. BIRLA AVE. SUITE 304 PORTLAND, OREGON 97217 P. 503.222.7353 WWW.MERRYMANBARNESARCHITECTS.COM

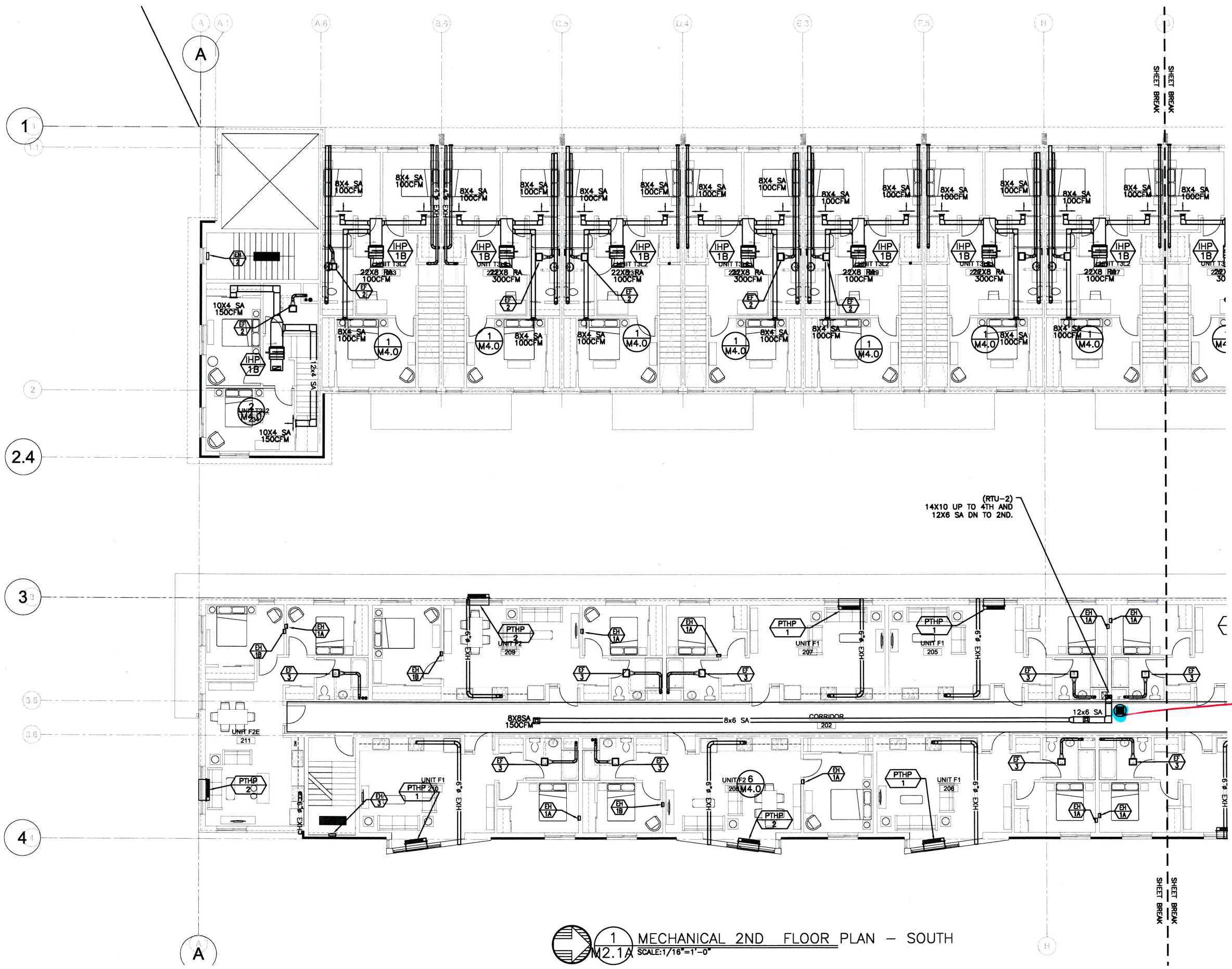
PROJECT NO. 16-0602  
 ISSUE DATE 01.05.2017  
 REVISIONS

SHEET  
 MECHANICAL 1ST  
 FLOOR PLAN - NORTH  
**M2.0B**

NOT FOR CONSTRUCTION  
 PRELIMINARY  
 © MERRYMAN BARNES ARCHITECTS, INC.

**M** Consulting Engineers  
**E** 2007 S.E. Ash St.  
**A** Portland, OR 97214  
**I** PHN: (503) 234-0648  
**N** FAX: (503) 234-0877  
**C** WWW.MEPA-ENG.COM  
 CONTACT: TAKAKO BAKER





1 MECHANICAL 2ND FLOOR PLAN - SOUTH  
 M2.1A SCALE: 1/16" = 1'-0"

*FIRE/SMOKE DAMPERS*

**KING+PARKS MULTI-FAMILY RESIDENCES**

PROJECT SITE: NE Martin Luther King Jr. Boulevard & N Rosa Parks Way  
 OWNER: Portland Community Reinvestment Initiatives Inc. (PCRI)  
 6329 NE Martin Luther King Jr. Blvd. Portland, Oregon 97211

PROJECT NO. 16-0602  
 ISSUE DATE 01.05.2017

SHEET  
 MECHANICAL 2ND  
 FLOOR PLAN - SOUTH

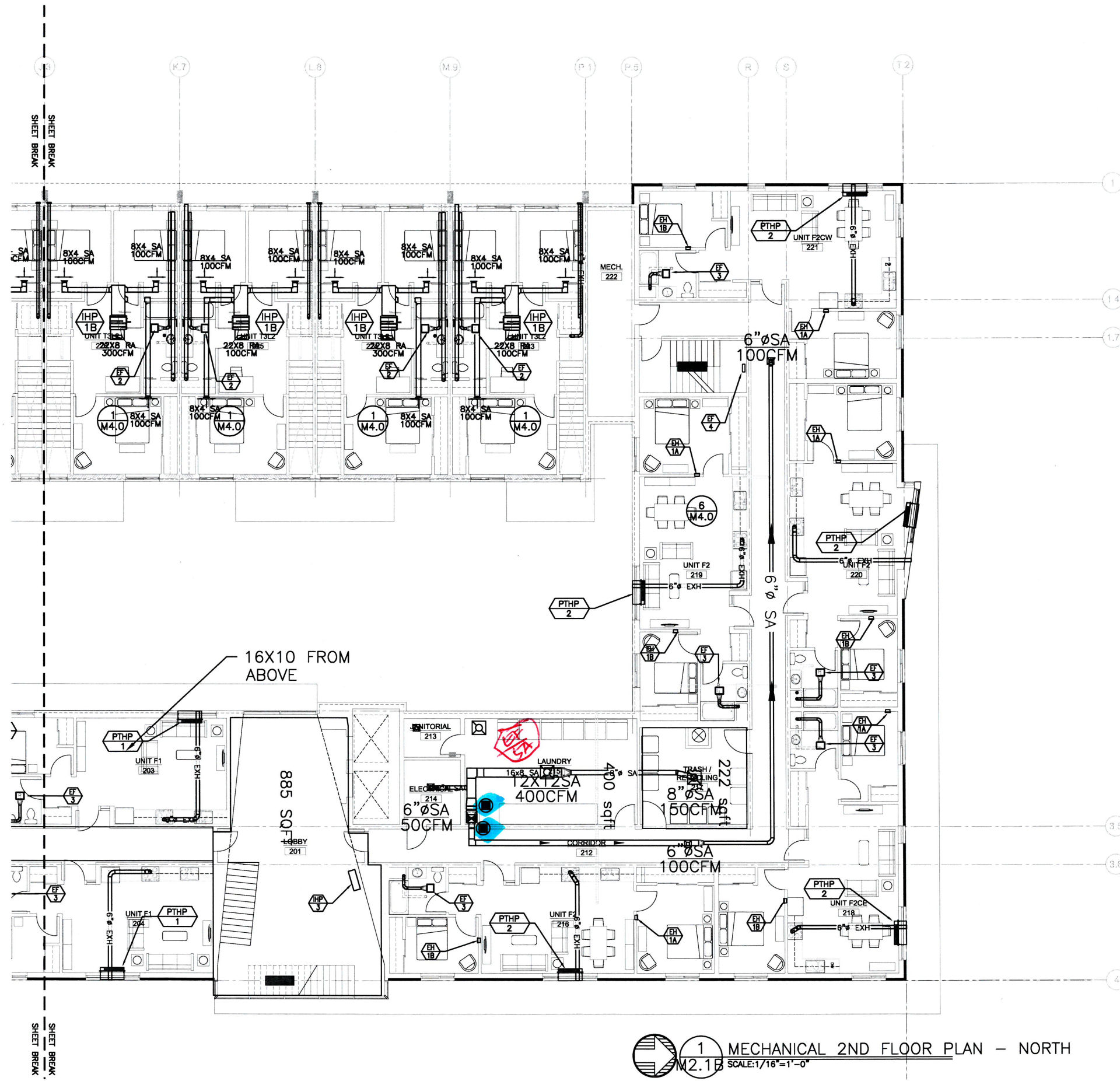
**M2.1A**

NOT FOR CONSTRUCTION  
 PRELIMINARY  
 © MERRIAM BARNES ARCHITECTS, INC.

**M** Consulting Engineers  
 2007 S.E. Ash St.  
 Portland, OR 97214  
 PHN: (503) 234-0648  
 FAX: (503) 234-0877  
 INC. WWW.MEIA-ENG.COM  
 CONTACT: TAKAKO BAKER

**MBA**  
 MERRIAM BARNES ARCHITECTS  
 4713 N. ALBANY AVE. SUITE 301  
 PORTLAND, OREGON 97217 P. 503.222.3753  
 WWW.MERRIAMBARNESARCHITECTS.COM





1 MECHANICAL 2ND FLOOR PLAN - NORTH  
 M2.1B SCALE: 1/16" = 1'-0"

**KING+PARKS MULTI-FAMILY RESIDENCES**

PROJECT SITE: NE Martin Luther King Jr. Boulevard & N Rosa Parks Way  
 OWNER: Portland Community Reinvestment Initiatives Inc. (PCRI)  
 6329 NE Martin Luther King Jr. Blvd. Portland, Oregon 97211



MERRYMAN BARNES ARCHITECTS 4713 N. ALBANY AVE. SUITE 301 PORTLAND, OREGON 97217 P. 503.222.2750 WWW.MERRYMANBARNESARCHITECTS.COM

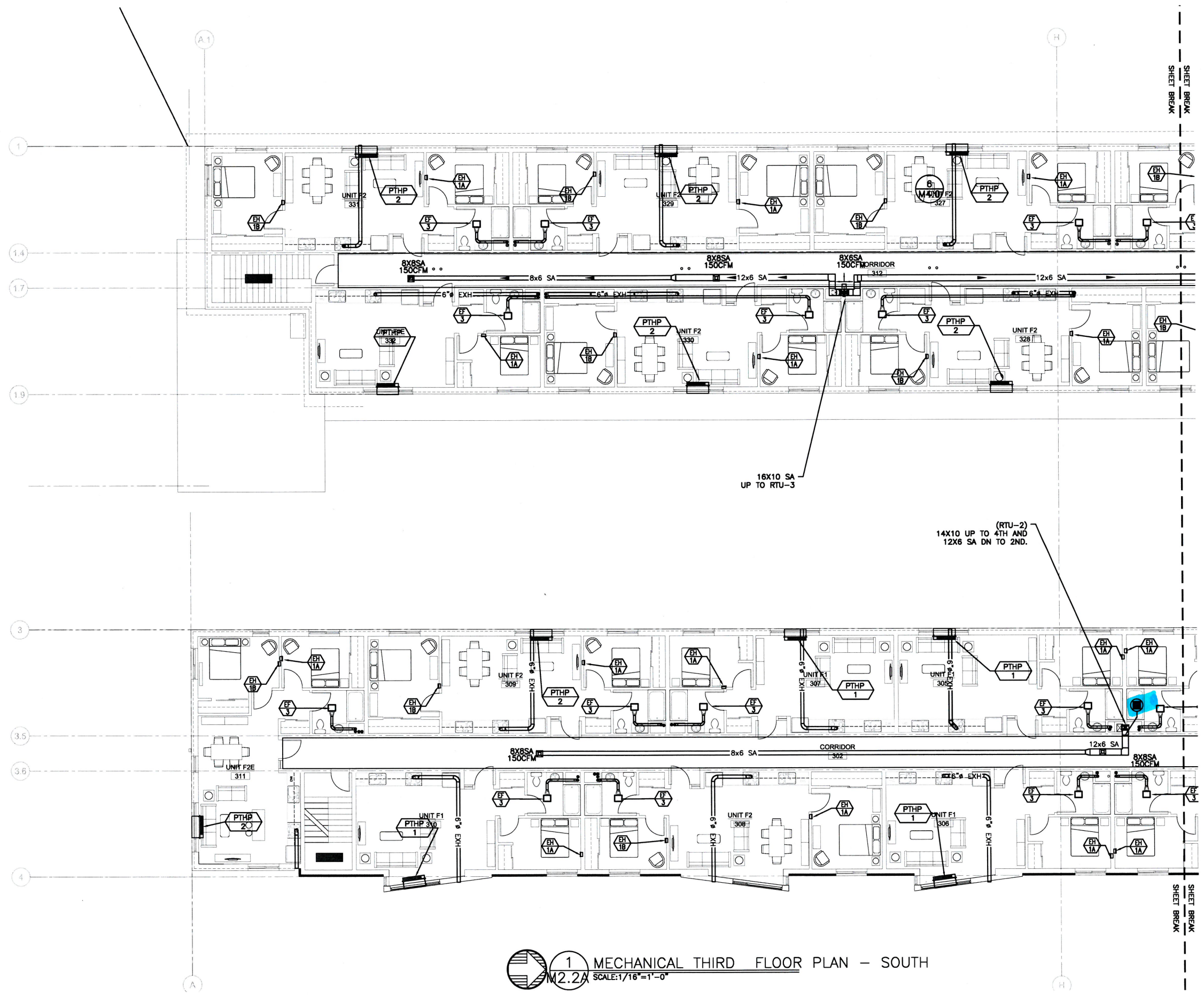
PROJECT NO. 16-0602 ISSUE DATE 01.05.2017  
 REVISIONS

SHEET MECHANICAL 2ND FLOOR PLANS-NORTH  
**M2.1B**

**M** Consulting Engineers  
 2007 S.E. Ash St.  
 Portland, OR 97214  
 PHN: (503) 234-0548  
 FAX: (503) 234-0677  
**INC.** WWW.MFIA-ENG.COM  
 CONTACT: TAKAKO BAKER

NOT FOR CONSTRUCTION  
**PRELIMINARY**  
 © MERRYMAN BARNES ARCHITECTS, INC.





1 MECHANICAL THIRD FLOOR PLAN - SOUTH  
 M2.2A SCALE: 1/16" = 1'-0"

**M E I A**  
 Consulting Engineers  
 2007 S.E. Ash St.  
 Portland, OR 97214  
 PHN: (503) 234-0648  
 FAX: (503) 234-0677  
 WWW.MEIA-ENG.COM  
 CONTACT: TAKAKO BAKER

**KING+PARKS MULTI-FAMILY RESIDENCES**

PROJECT SITE: NE Martin Luther King Jr. Boulevard & N Rosa Parks Way  
 OWNER: Portland Community Reinvestment Initiatives Inc. (PCR)  
 6329 NE Martin Luther King Jr. Blvd. Portland, Oregon 97211

PROJECT NO. 16-0602  
 ISSUE DATE 01.05.2017

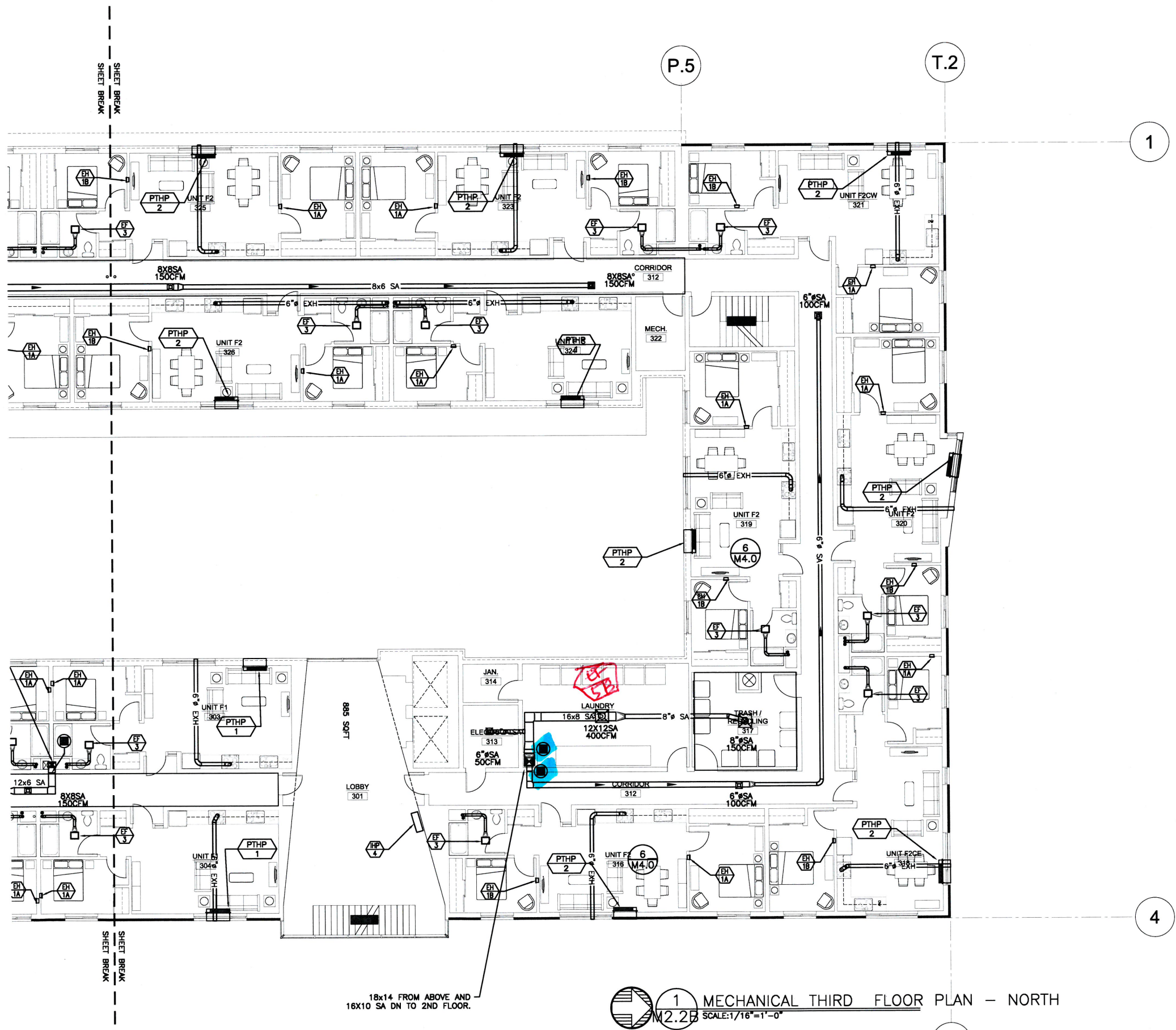
SHEET  
 MECHANICAL 3RD  
 FLOOR PLANS  
**M2.2A**

NOT FOR CONSTRUCTION  
 PRELIMINARY  
 © MERRYMAN BARNES ARCHITECTS, INC.



MERRYMAN BARNES ARCHITECTS 4713 VALDENWAVE SUITE 301 PORTLAND, OREGON 97217 P 503.222.2753 WWW.MERRYMANBARNESARCHITECTS.COM





**KING+PARKS MULTI-FAMILY RESIDENCES**

PROJECT SITE: NE Martin Luther King Jr. Boulevard & N Rosa Parks Way  
OWNER: Portland Community Reinvestment Initiatives Inc. (PCRI)  
6329 NE Martin Luther King Jr. Blvd. Portland, Oregon 97211



MERRYMAN BARNES ARCHITECTS 4713 N. LINCOLN BLVD. SUITE 301 PORTLAND, OREGON 97217 P: 503.223.3753 www.merrymanbarnesarchitects.com

PROJECT NO. 16-0602  
ISSUE DATE 01.05.2017

SHEET  
MECHANICAL 3RD FLOOR PLAN  
**M2.2B**

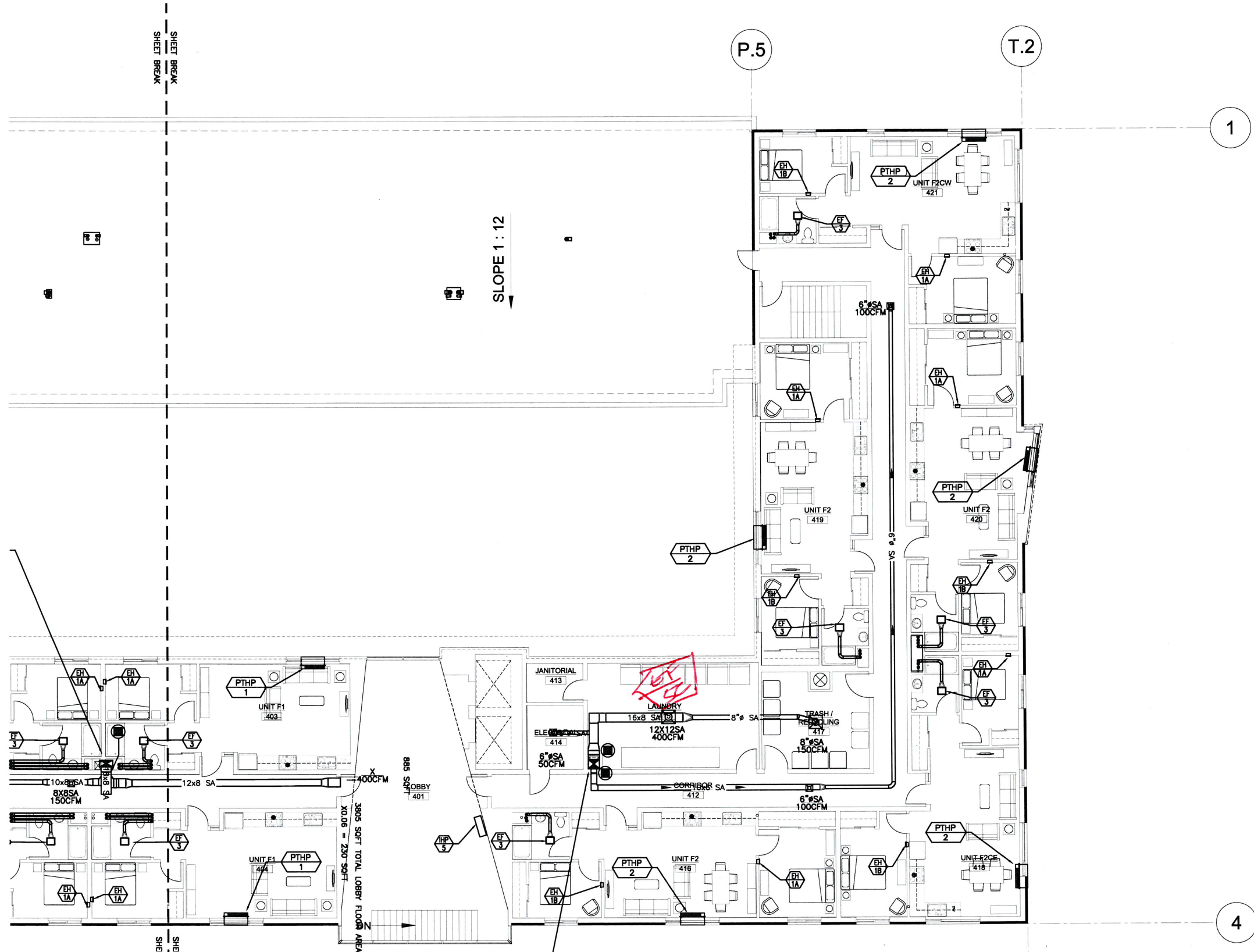
NOT FOR CONSTRUCTION  
**PRELIMINARY**  
© MERRYMAN BARNES ARCHITECTS, INC.

**M** Consulting Engineers  
2007 S.E. Ash St.  
Portland, OR 97214  
PHN: (503) 234-0548  
FAX: (503) 234-0677  
INC. WWW.MBIA-ENG.COM  
CONTACT: TAKAKO BAKER









1 MECHANICAL 4TH FLOOR PLAN - NORTH  
 M2.3B SCALE: 1/16" = 1'-0"

**MFA** Consulting Engineers  
 2007 S.E. Ash St.  
 Portland, OR 97214  
 PHN: (503) 234-0548  
 FAX: (503) 234-0677  
 WWW.MFA-ENG.COM  
 CONTACT: TAKAKO BAKER

**KING+PARKS MULTI-FAMILY RESIDENCES**

PROJECT SITE: NE Martin Luther King Jr. Boulevard & N Rosa Parks Way  
 OWNER: Portland Community Reinvestment Initiatives Inc. (PCRI)  
 6329 NE Martin Luther King Jr. Blvd. Portland, Oregon 97211

PROJECT NO. 16-0602  
 ISSUE DATE 01.05.2017

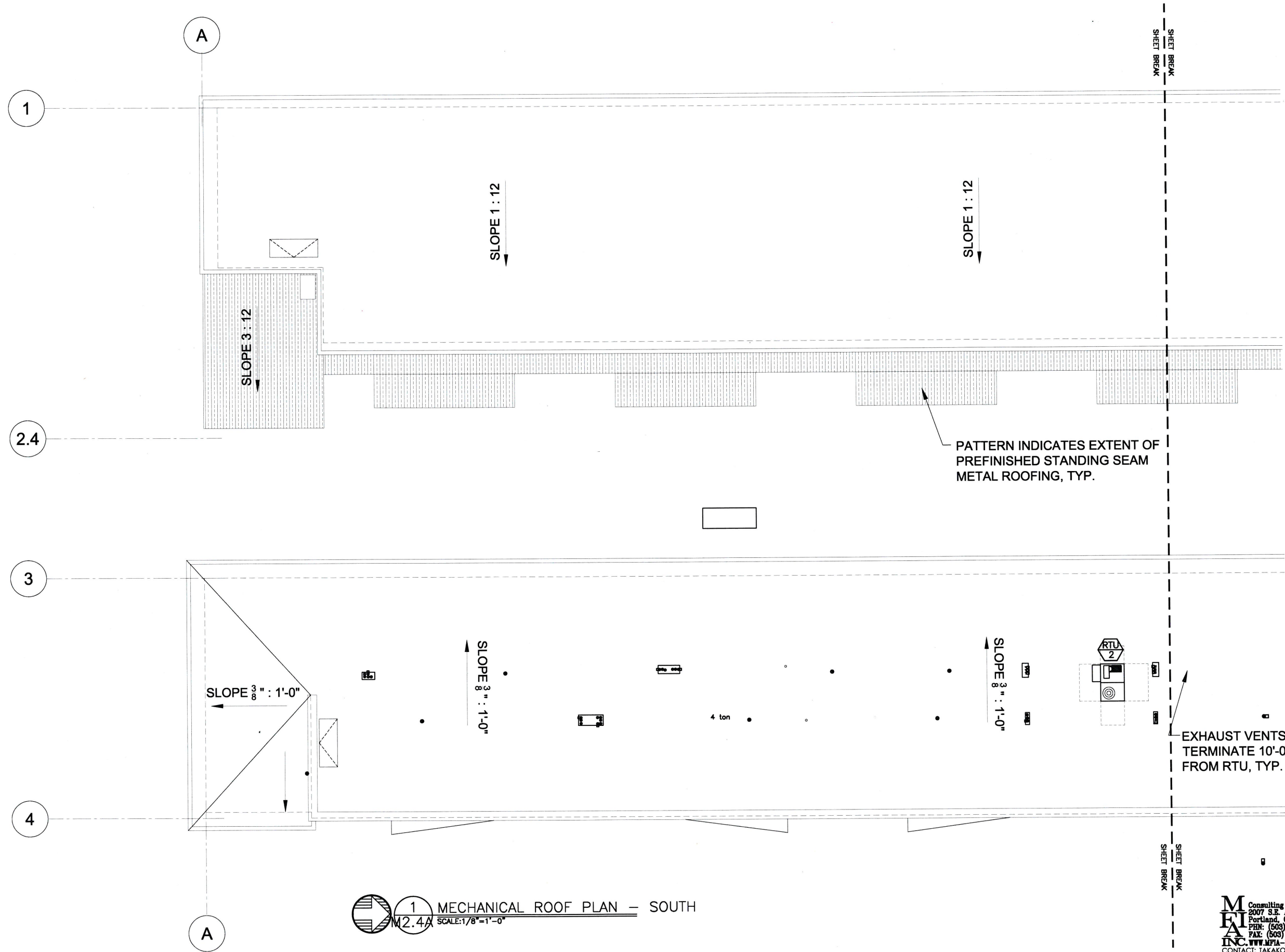
SHEET  
 MECHANICAL 4TH  
 FLOOR PLAN - NORTH  
**M2.3B**

NOT FOR CONSTRUCTION  
**PRELIMINARY**  
 © MERRYMAN BARNES ARCHITECTS, INC.



MERRYMAN BARNES ARCHITECTS 4713 VALLELANE SUITE 300 PORTLAND, OREGON 97217 P. 503.223.3793 WWW.MERRYMANBARNESARCHITECTS.COM





PATTERN INDICATES EXTENT OF  
 PREFINISHED STANDING SEAM  
 METAL ROOFING, TYP.

EXHAUST VENTS  
 TERMINATE 10'-0"  
 FROM RTU, TYP.

**1** MECHANICAL ROOF PLAN - SOUTH  
 M2.4A SCALE: 1/8" = 1'-0"

**MFA**  
 Consulting Engineers  
 2007 S.E. Ash St.  
 Portland, OR 97214  
 PHN: (503) 234-0648  
 FAX: (503) 234-0677  
 WWW.MFIA-ENG.COM  
 CONTACT: TAKAKO BAKER

**KING+PARKS MULTI-FAMILY RESIDENCES**

PROJECT SITE: NE Martin Luther King Jr. Boulevard & N Rosa Parks Way  
 OWNER: Portland Community Reinvestment Initiatives Inc. (PCRI)  
 6329 NE Martin Luther King Jr. Blvd. Portland, Oregon 97211

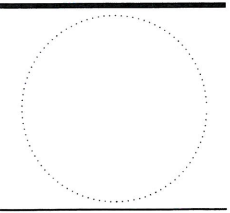
PROJECT NO.	ISSUE DATE
16-0602	01.05.2017
REVISIONS	

SHEET  
 MECHANICAL  
 ROOF PLAN - NORTH  
**M2.4A**

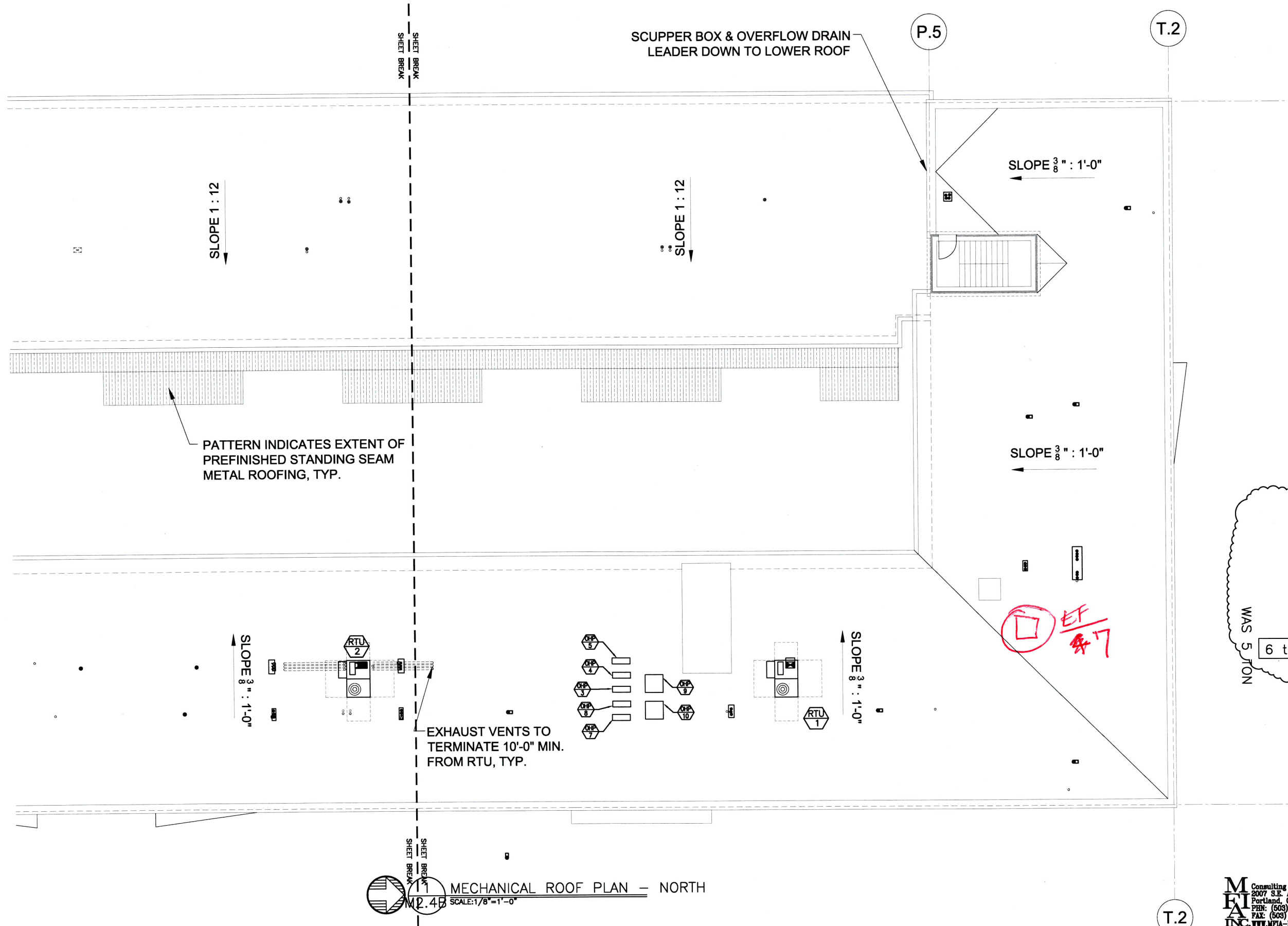
NOT FOR CONSTRUCTION  
**PRELIMINARY**  
 © MERRYMAN BARNES ARCHITECTS, INC.



MERRYMAN BARNES ARCHITECTS 4713 VALDIVIA BLVD. SUITE 300 PORTLAND, OREGON 97217 P: 503.223.3750 WWW.MERRYMANBARNESARCHITECTS.COM







MECHANICAL ROOF PLAN - NORTH  
 SCALE: 1/8" = 1'-0"  
 M2.4B

WAS 5' ON 6 t.

**M E I A**  
 Consulting Engineers  
 2007 S.E. Ash St.  
 Portland, OR 97214  
 PH: (503) 234-0548  
 FAX: (503) 234-0877  
 WWW.MEIA-ENG.COM  
 CONTACT: TAKAKO BAKER

**KING+PARKS MULTI-FAMILY RESIDENCES**

PROJECT SITE: NE Martin Luther King Jr. Boulevard & N Rosa Parks Way  
 OWNER: Portland Community Reinvestment Initiatives Inc. (PCRI)  
 6329 NE Martin Luther King Jr. Blvd. Portland, Oregon 97211

PROJECT NO. 16-0602  
 ISSUE DATE 01.05.2017

SHEET  
 MECHANICAL  
 ROOF PLAN - NORTH  
**M2.4B**

NOT FOR CONSTRUCTION  
**PRELIMINARY**  
 © MERRYMAN BARNES ARCHITECTS, INC.



MERRYMAN BARNES ARCHITECTS 473 N. LINCOLN BLVD. SUITE 300 PORTLAND, OREGON 97217 P. 503.222.3750  
 WWW.MERRYMANBARNESARCHITECTS.COM