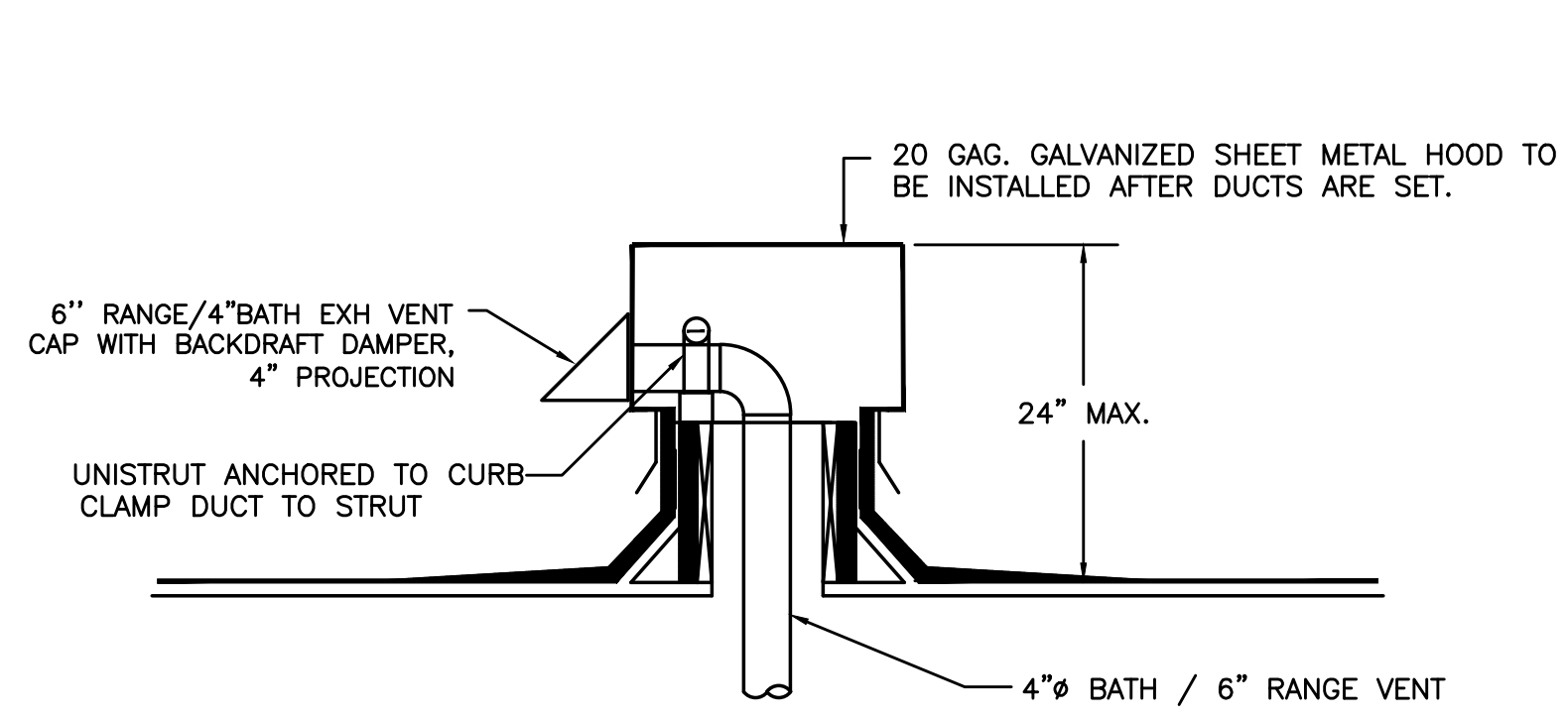
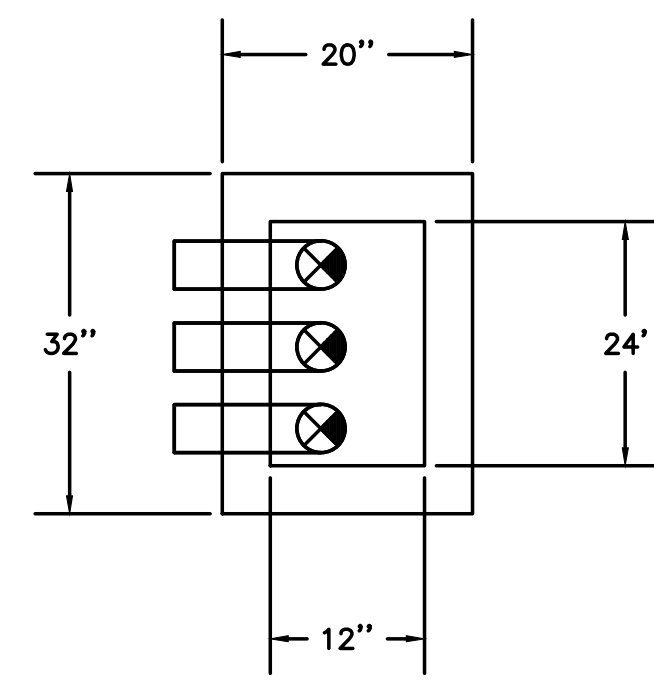


PRELIMINARY
NOT FOR
CONSTRUCTION

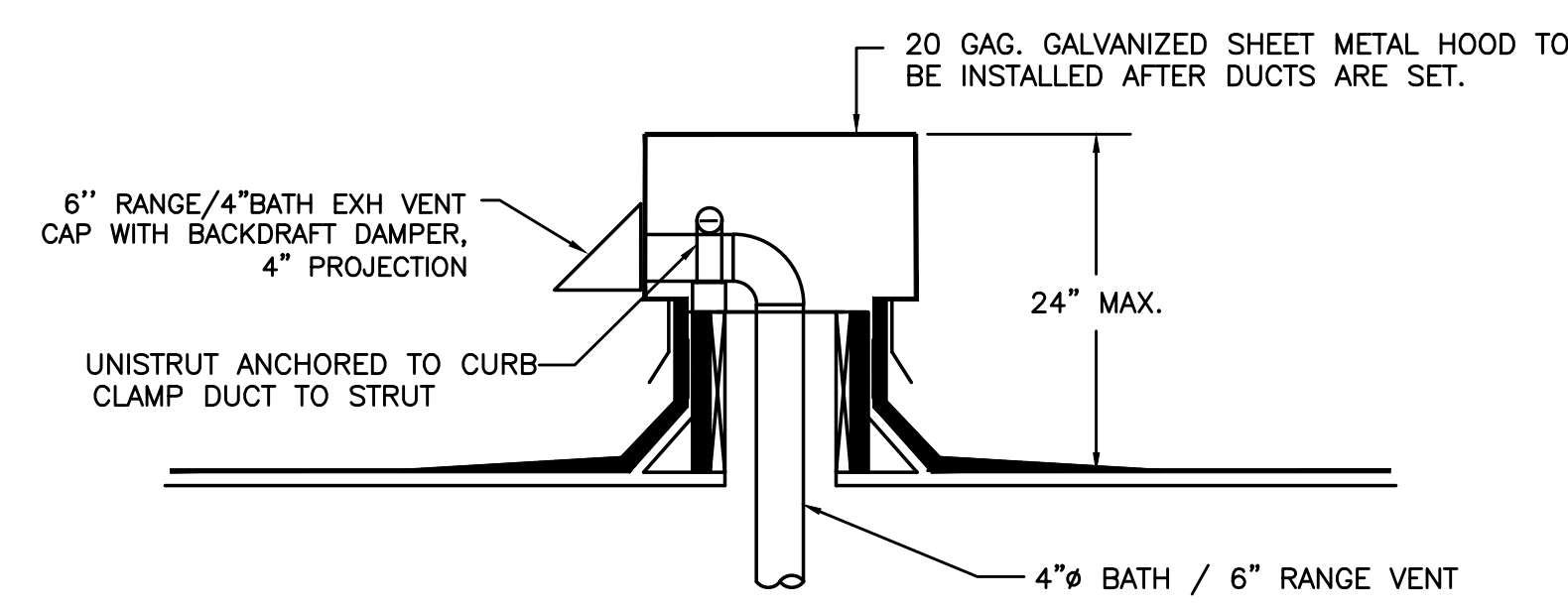


SECTION VIEW

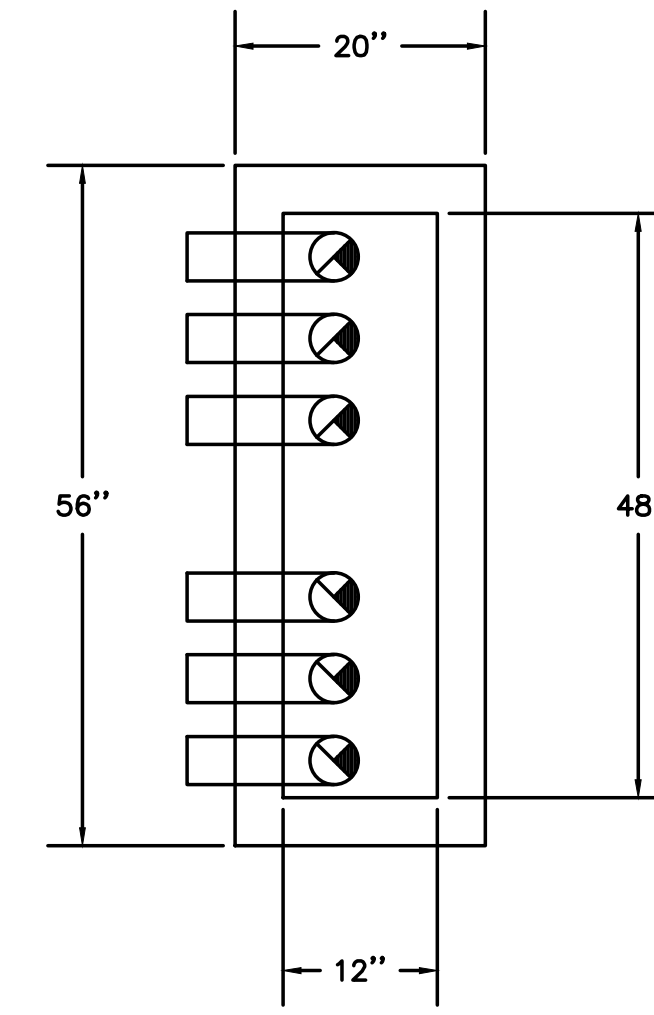


TYPICAL PLAN VIEW (3-4"Ø DUCTS)

1 TYPICAL ROOFTOP OUTLET HOOD
M6.7 NOT TO SCALE

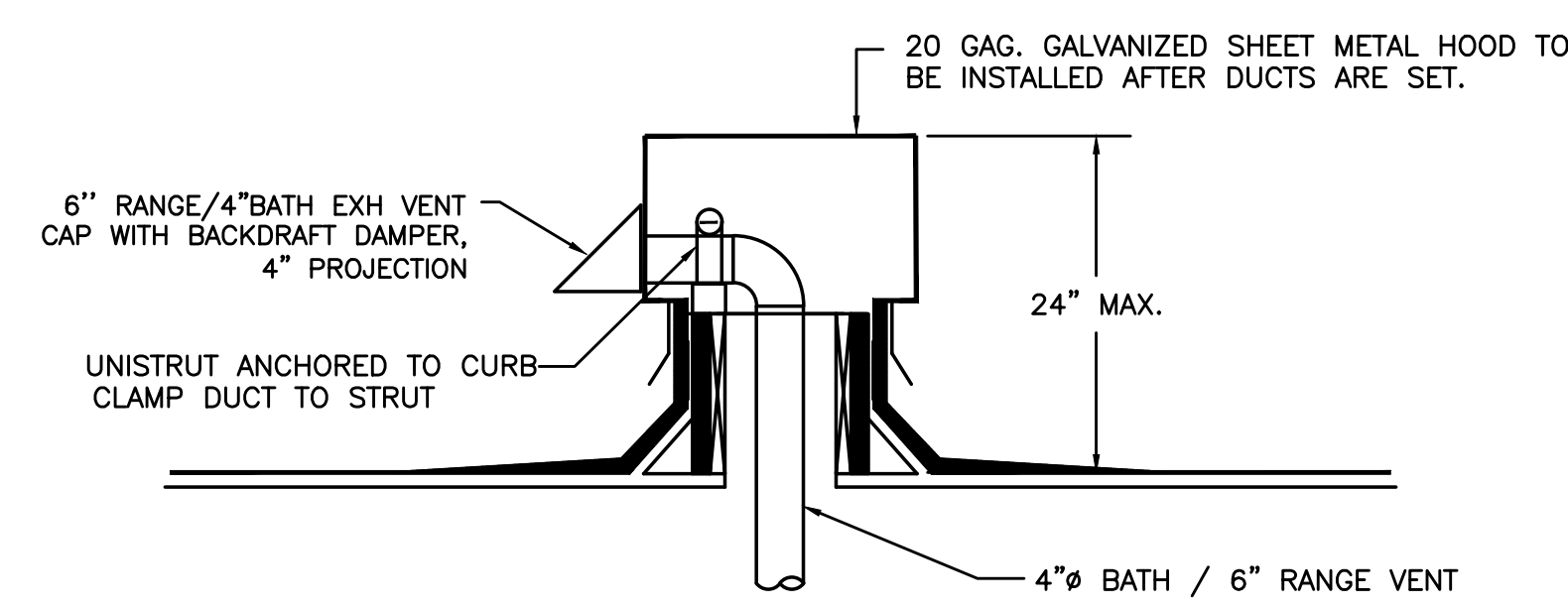


SECTION VIEW

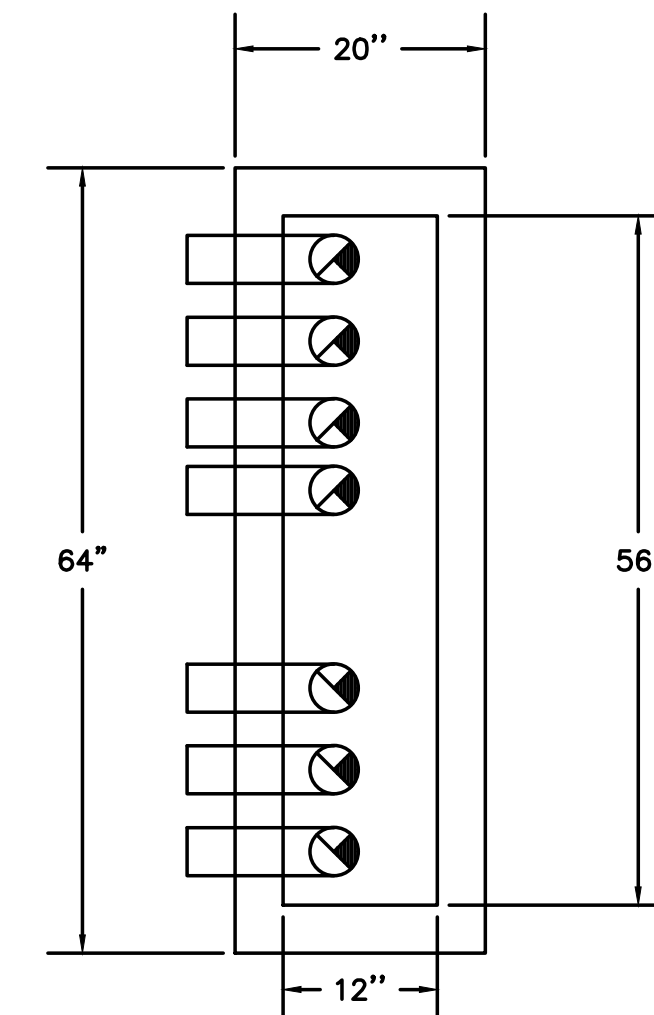


TYPICAL PLAN VIEW (6-4"Ø DUCTS)

2 TYPICAL ROOFTOP OUTLET HOOD
M6.7 NOT TO SCALE



SECTION VIEW



TYPICAL PLAN VIEW (7-4"Ø DUCTS)

2 TYPICAL ROOFTOP OUTLET HOOD
M6.7 NOT TO SCALE

KING+PARKS MULTI-FAMILY RESIDENCES

PROJECT SITE: NE Martin Luther King Jr. Boulevard & N Rosa Parks Way
OWNER: Portland Community Reinvestment Initiatives Inc. (PCRI)
6329 NE Martin Luther King Jr. Blvd. Portland, Oregon 97211

MBA

MERRYMAN BARNES ARCHITECTS 4713 WALBURN AVE. SUITE 304 PORTLAND, OREGON 97217 P. 503.222.2793 WWW.MERRYMANBARNESARCHITECTS.COM

PROJECT NO. 16-0602
ISSUE DATE 06.23.2017

REVISIONS

| | |
|--|--|
| | |
| | |
| | |

SHEET

MECHANICAL
DETAILS

M6.7

NOT FOR CONSTRUCTION

PRICING SET

© MERRYMAN BARNES ARCHITECTS, INC.

MERRYMAN BARNES ARCHITECTS
Consulting Engineers
2007 S.E. Ash St.
Portland, OR 97214
PHN: (503) 234-0548
FAX: (503) 234-0677
WWW.MFIA-ENG.COM
CONTACT: Takako Baker