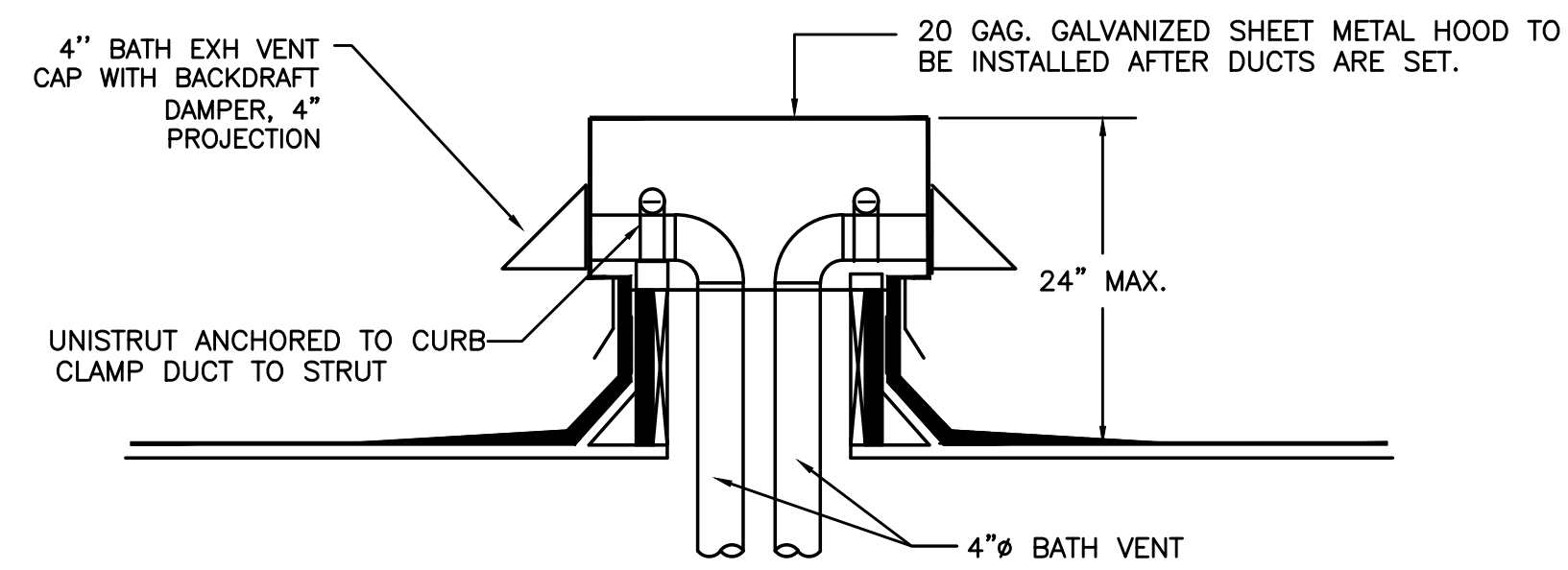
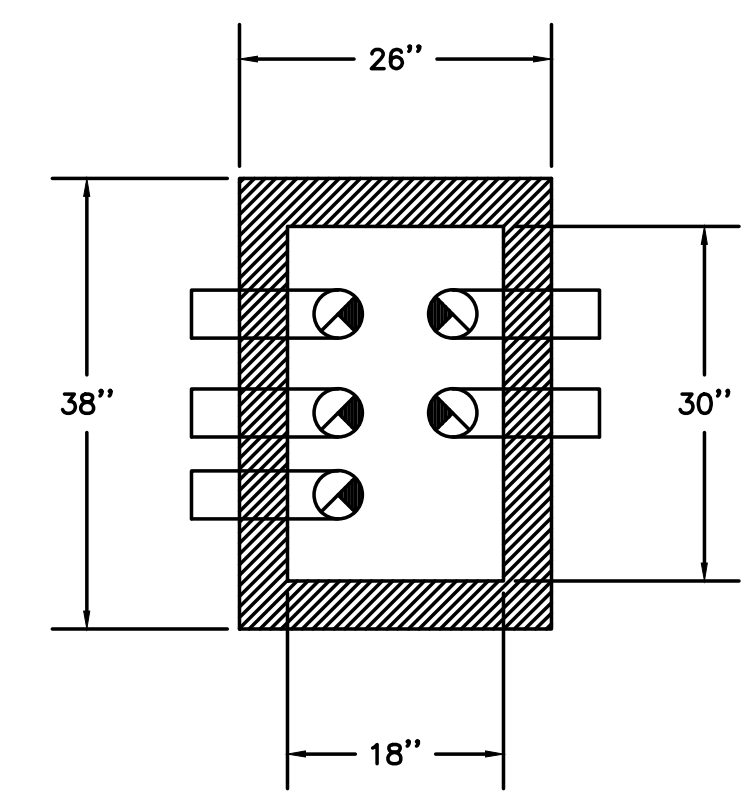


PRELIMINARY
NOT FOR
CONSTRUCTION

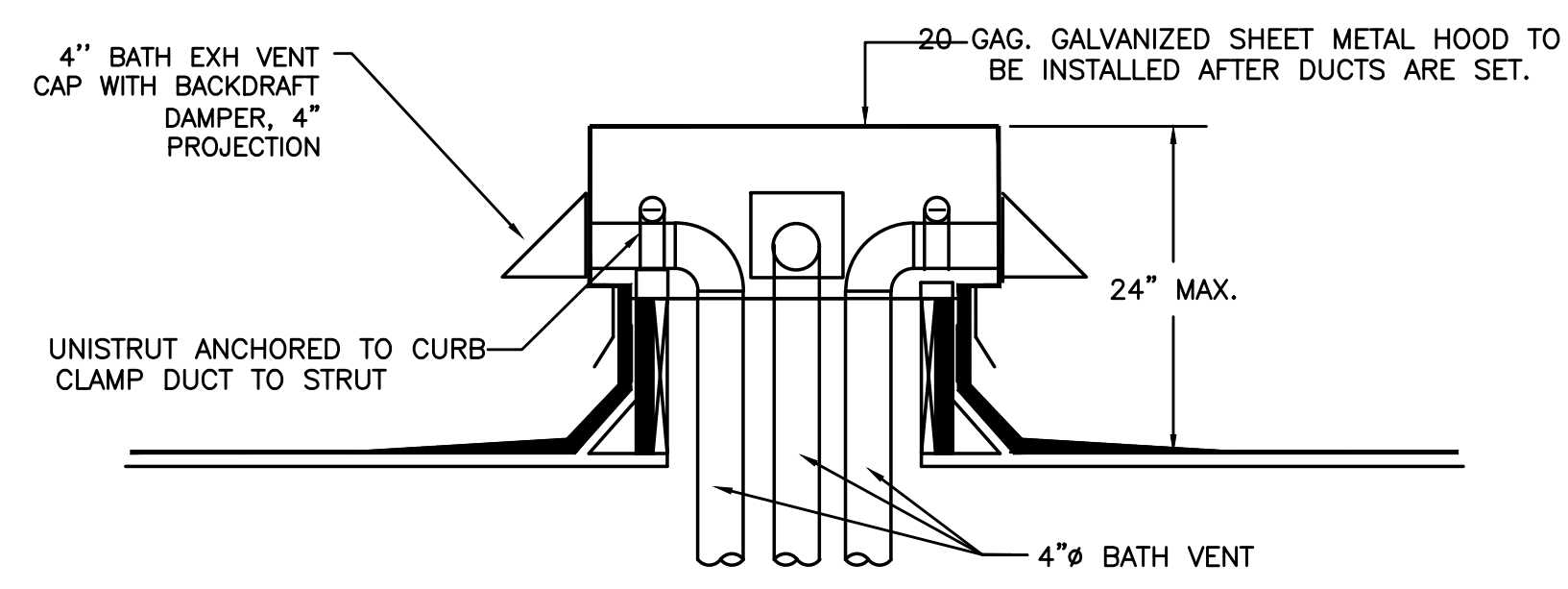


SECTION VIEW

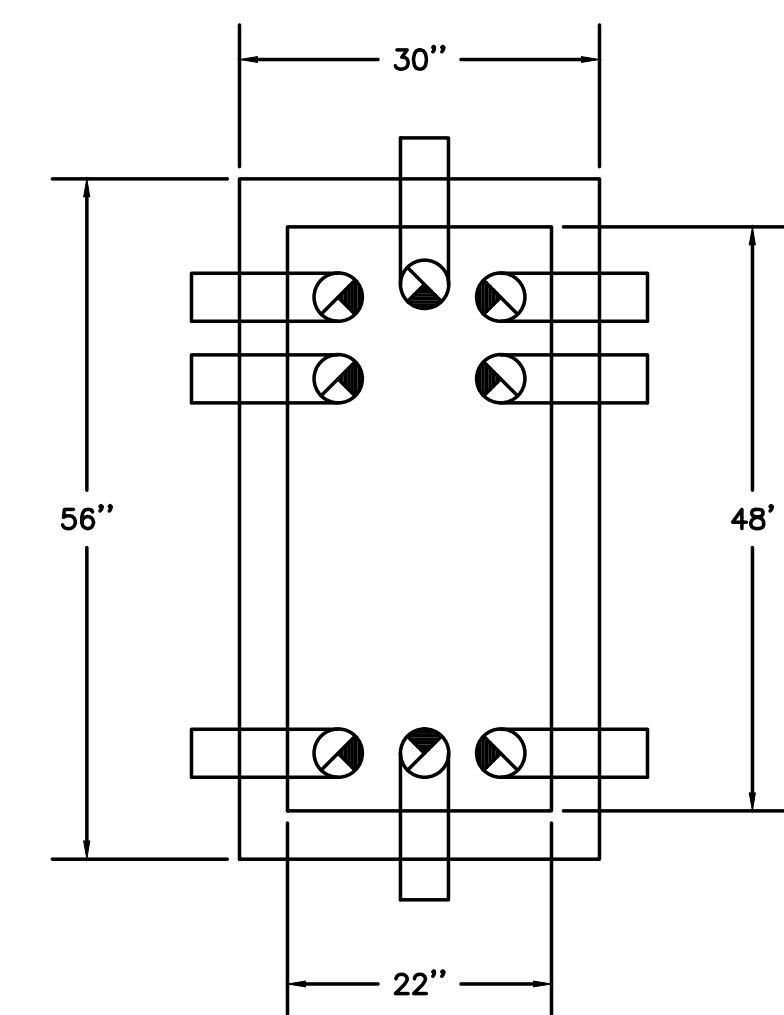


TYPICAL PLAN VIEW (5-4"Ø DUCTS)

1 TYPICAL ROOFTOP OUTLET HOOD
M6.6 NOT TO SCALE

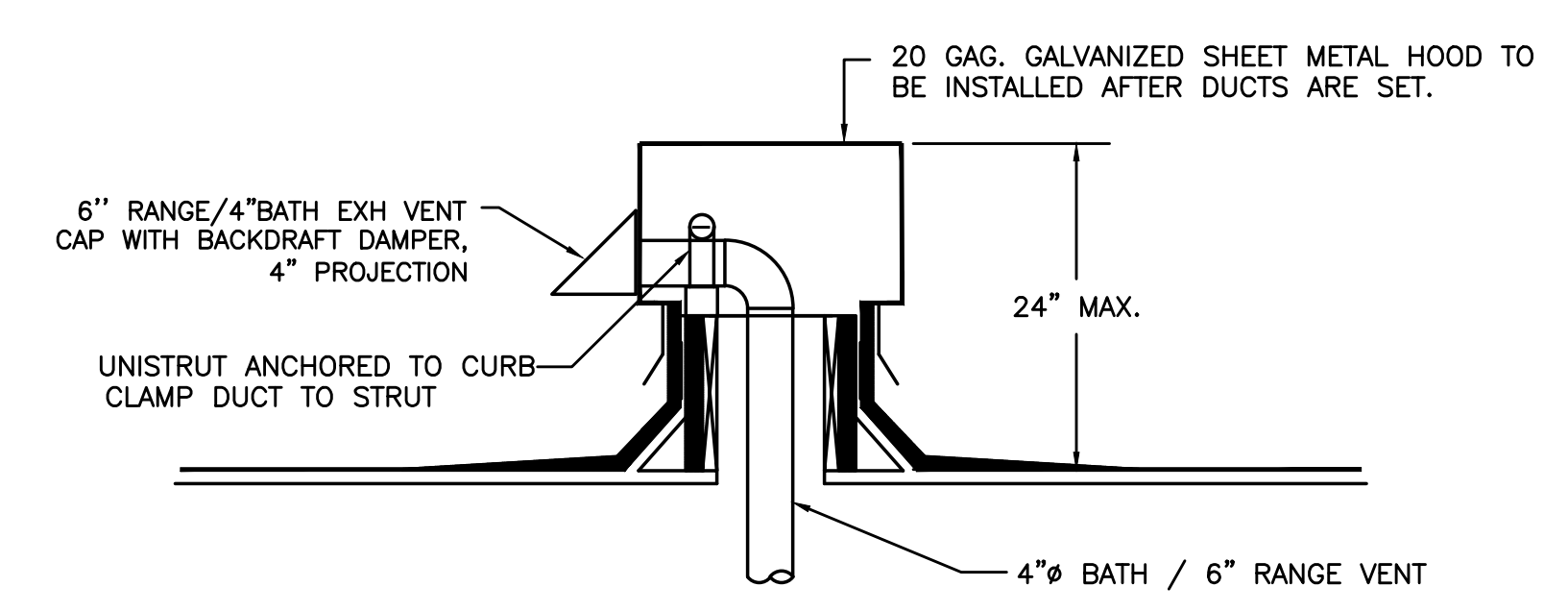


SECTION VIEW

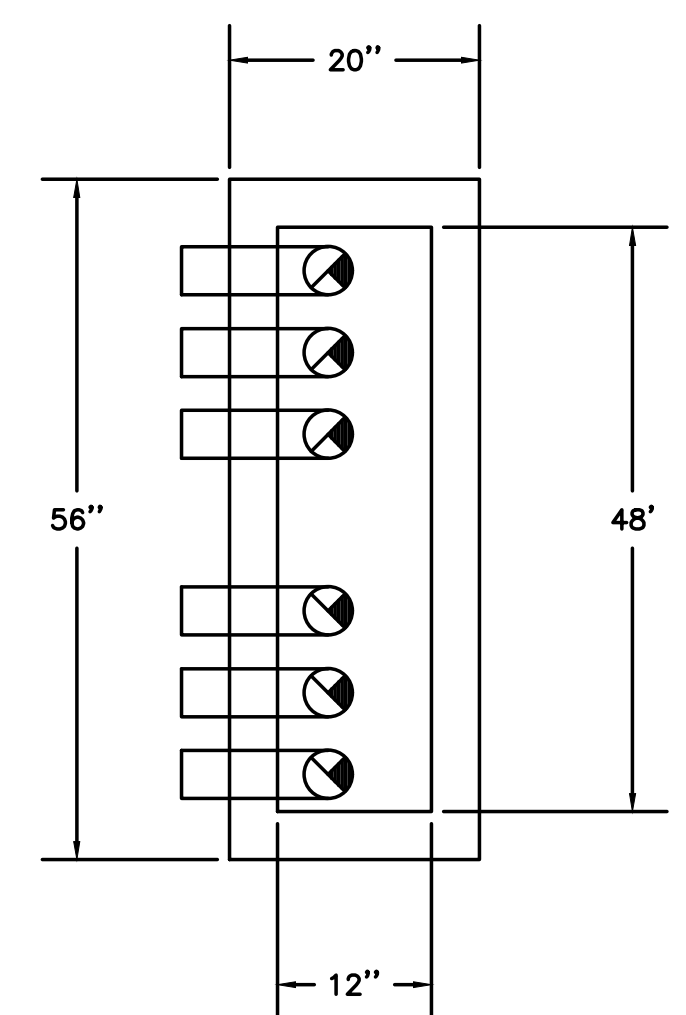


TYPICAL PLAN VIEW (8-4"Ø DUCTS)

2 TYPICAL ROOFTOP OUTLET HOOD
M6.6 NOT TO SCALE



SECTION VIEW



TYPICAL PLAN VIEW (6-4"Ø DUCTS)

3 TYPICAL ROOFTOP OUTLET HOOD
M6.6 NOT TO SCALE

KING+PARKS MULTI-FAMILY RESIDENCES

PROJECT SITE: NE Martin Luther King Jr. Boulevard & N Rosa Parks Way
OWNER: Portland Community Reinvestment Initiatives Inc. (PCRI)
6329 NE Martin Luther King Jr. Blvd. Portland, Oregon 97211

MBA

MERRYMAN BARNES ARCHITECTS 4713 N ALBINA AVE. SUITE 304 PORTLAND, OREGON 97217 P. 503.222.2753 WWW.MERRYMANBARNESARCHITECTS.COM

PROJECT NO. 16-0602
ISSUE DATE 06.23.2017

REVISIONS

SHEET

MECHANICAL
DETAILS
M6.6
NOT FOR CONSTRUCTION
PRICING SET
© MERRYMAN BARNES ARCHITECTS, INC.

Merryman Barnes
Consulting Engineers
2007 S.E. Ash St.
Portland, OR 97214
PHN: (503) 234-0548
FAX: (503) 234-0677
WWW.MFIA-ENG.COM
CONTACT: Takako Baker