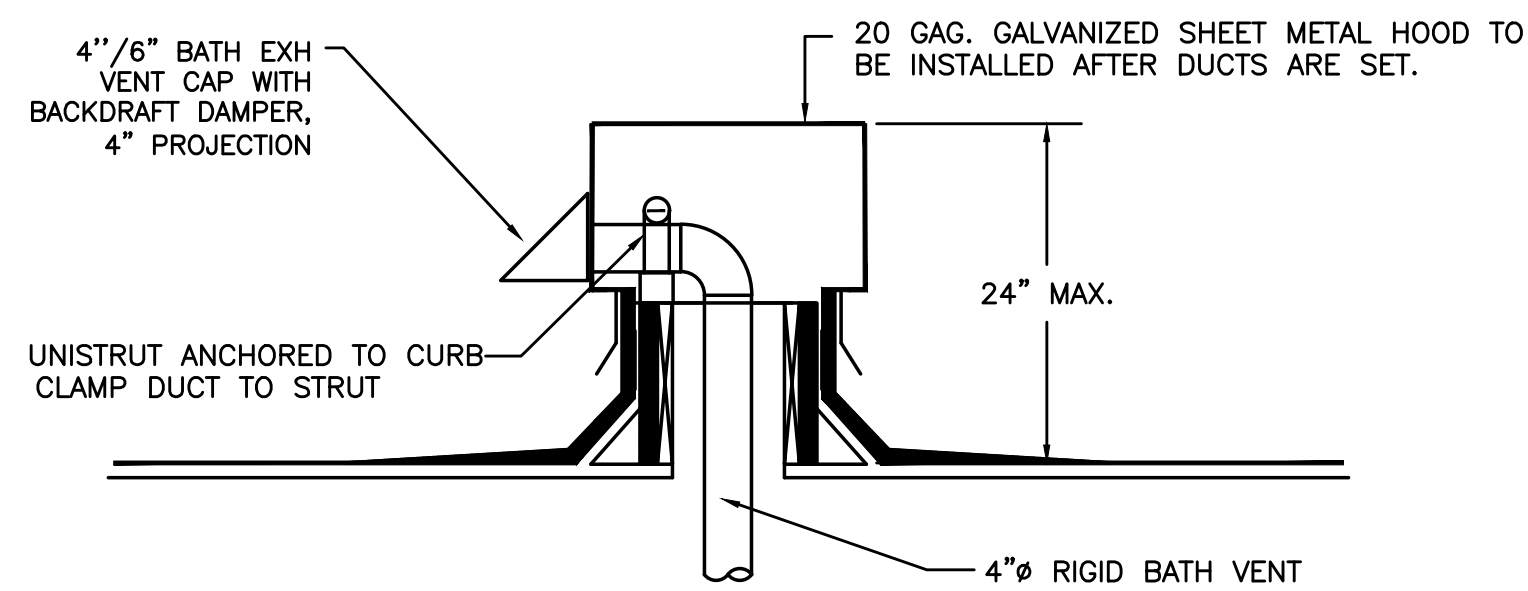
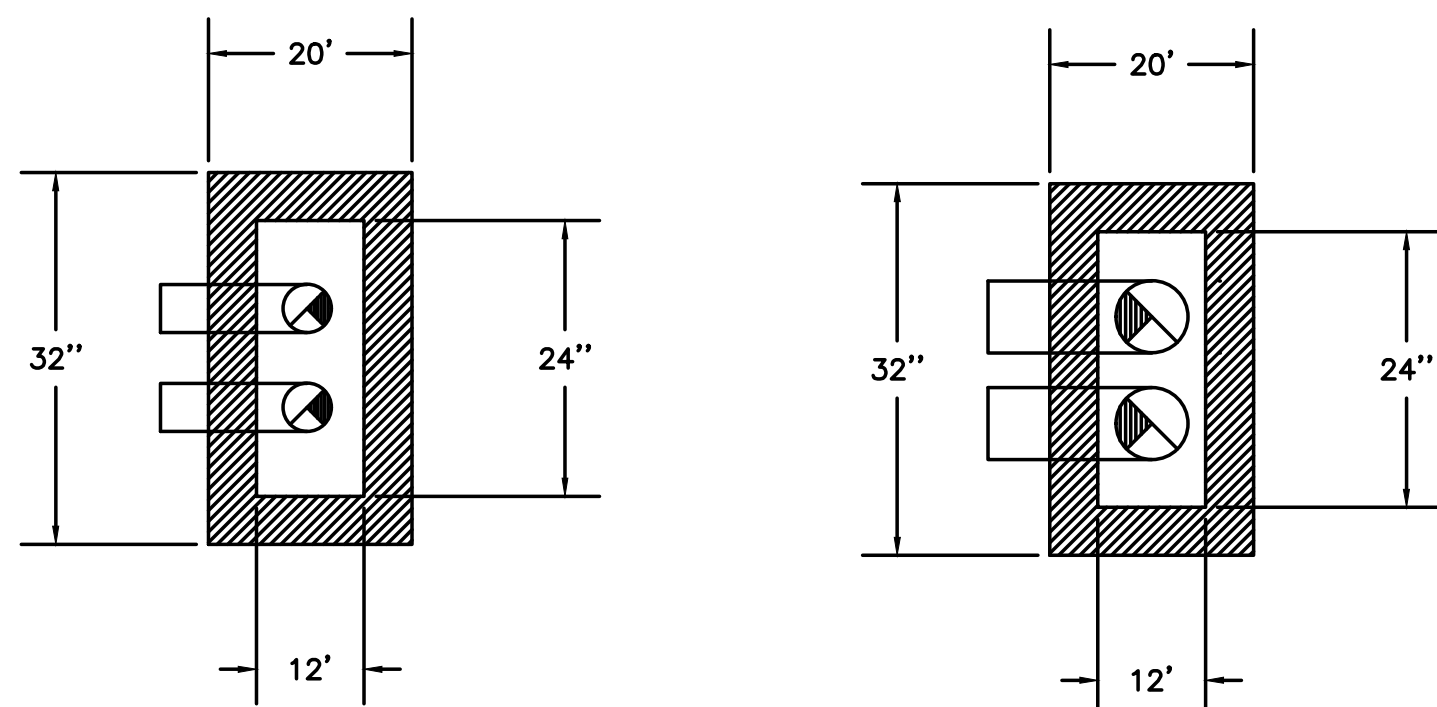


PRELIMINARY  
NOT FOR  
CONSTRUCTION

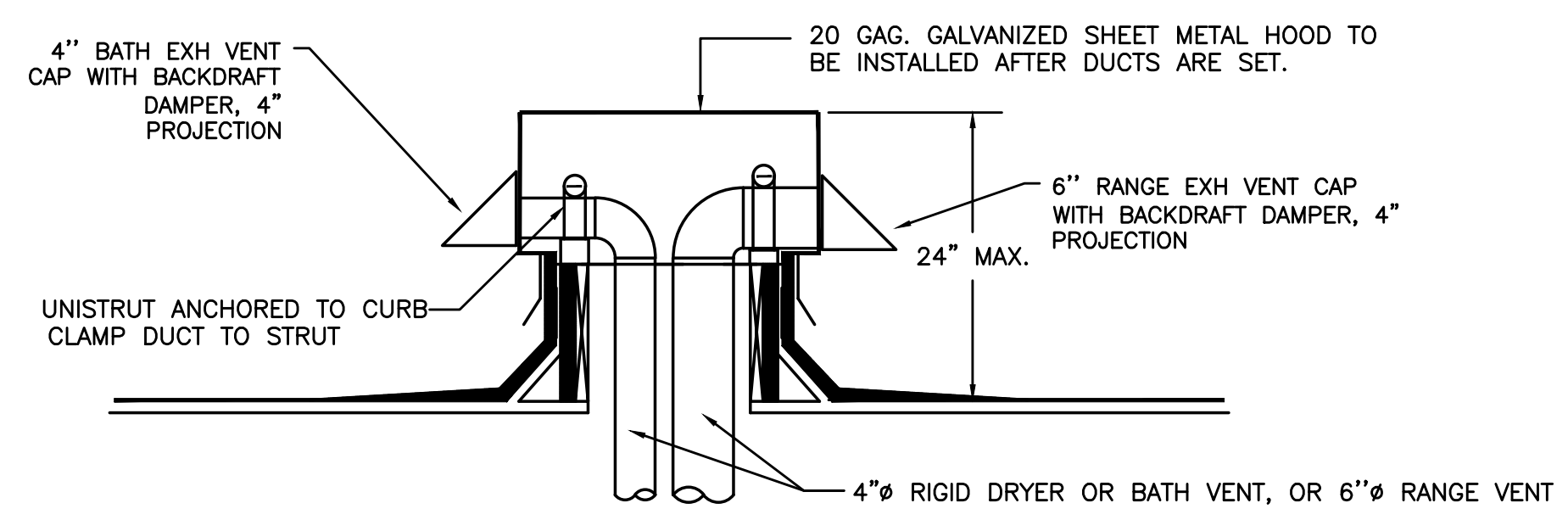


SECTION VIEW

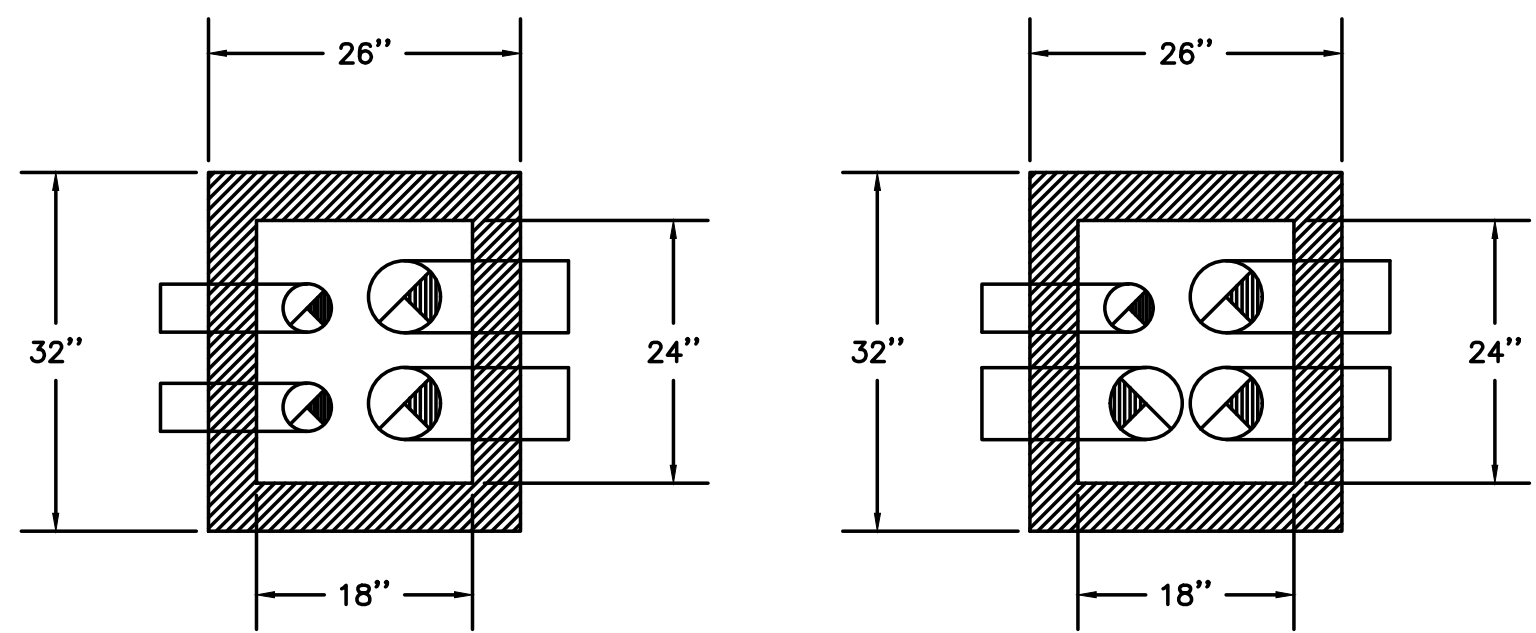


TYPICAL PLAN VIEW (2-4"Ø DUCTS) & (2-6"Ø DUCTS)

1 TYPICAL ROOFTOP OUTLET HOOD  
M6.5 NOT TO SCALE

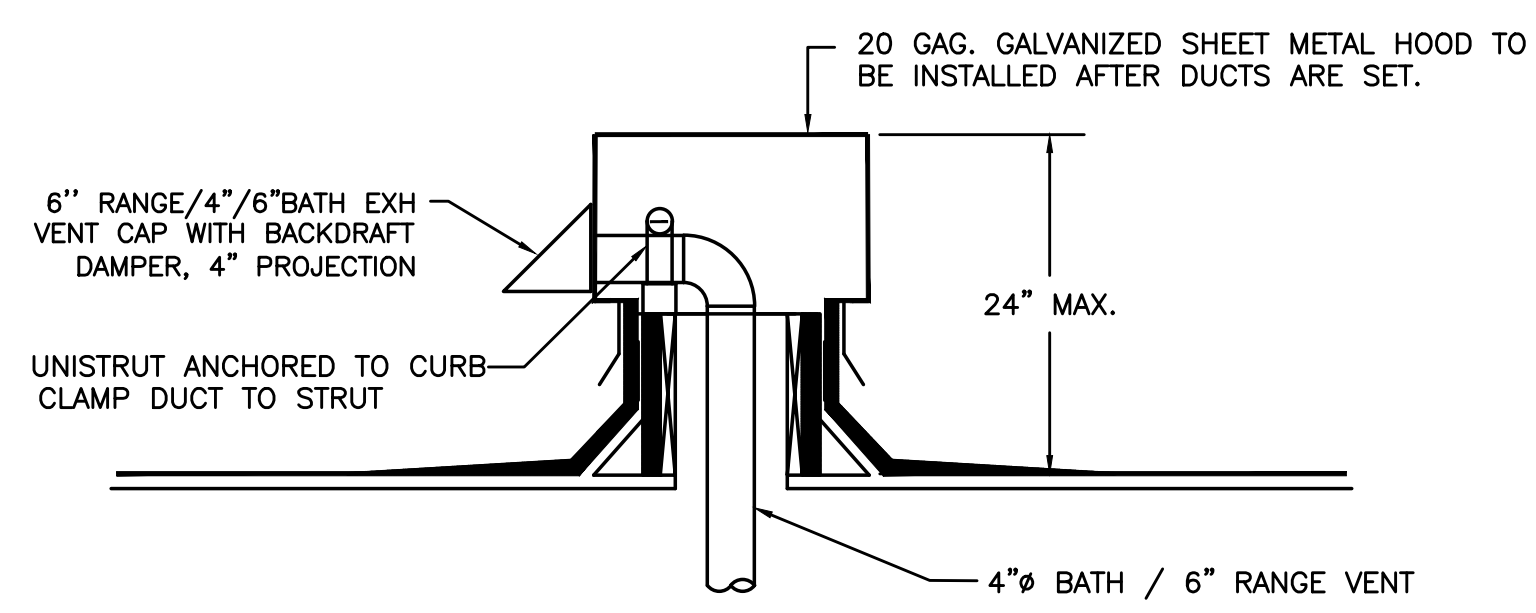


SECTION VIEW

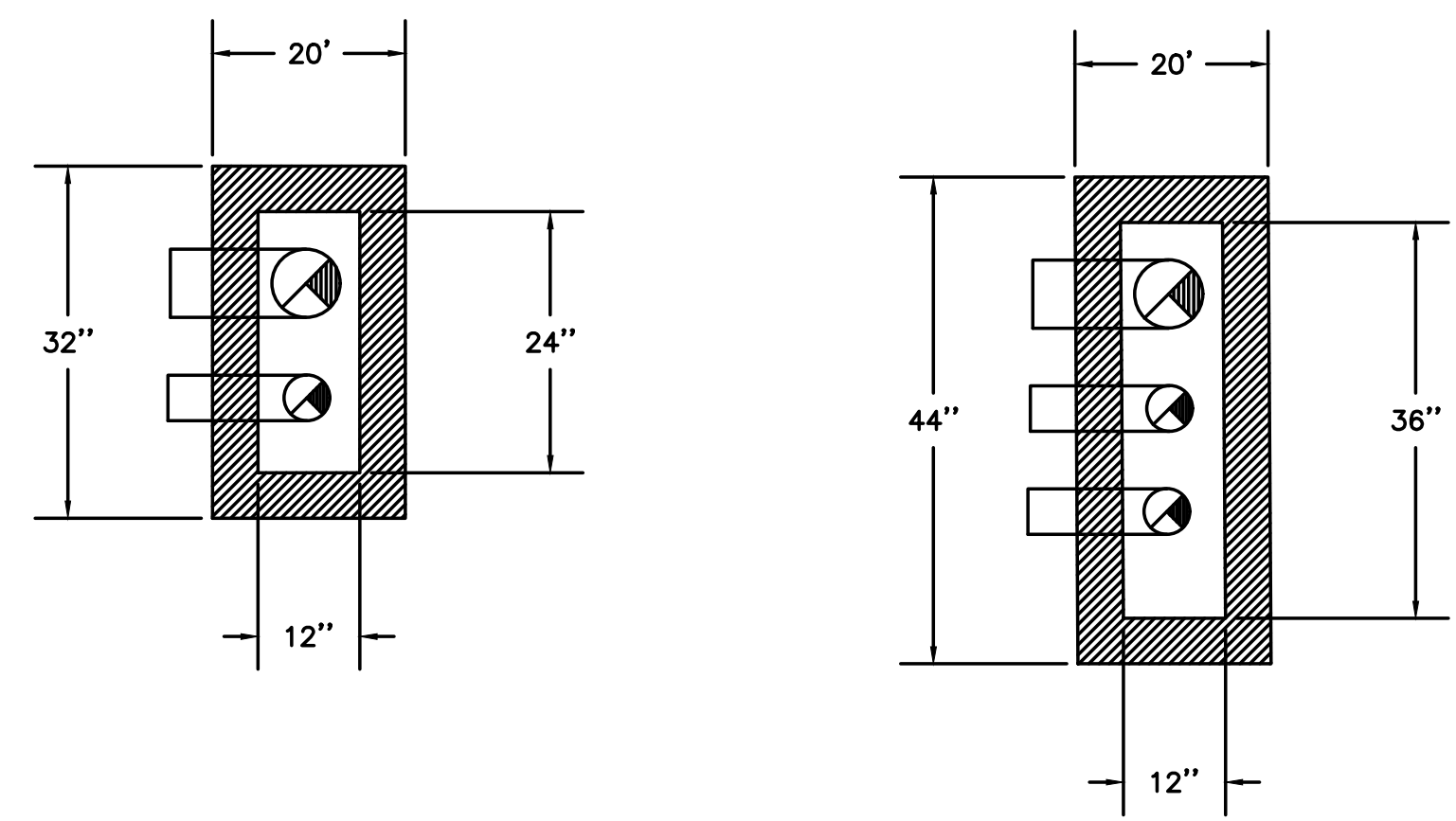


TYPICAL PLAN VIEW (2-4"Ø DUCTS & 2-6"Ø DUCTS) OR  
TYPICAL PLAN VIEW (2-4"Ø DUCTS & 3-6"Ø DUCTS) OR

2 TYPICAL ROOFTOP OUTLET HOOD  
M6.5 NOT TO SCALE



SECTION VIEW



TYPICAL PLAN VIEW (1-6"Ø DUCT & 1- 4"Ø DUCT)

3 TYPICAL ROOFTOP OUTLET HOOD  
M6.5 NOT TO SCALE

KING+PARKS MULTI-FAMILY RESIDENCES

PROJECT SITE: NE Martin Luther King Jr. Boulevard & N Rosa Parks Way  
OWNER: Portland Community Reinvestment Initiatives Inc. (PCRI)  
6329 NE Martin Luther King Jr. Blvd. Portland, Oregon 97211



PROJECT NO. 16-0602  
ISSUE DATE 06.23.2017

REVISIONS

SHEET

MECHANICAL  
DETAILS

M6.5

NOT FOR CONSTRUCTION

PRICING SET

© MERRYMAN BARNES ARCHITECTS, INC.

Merryman Barnes Architects  
Consulting Engineers  
2007 S.E. Ash St.  
Portland, OR 97214  
PHN: (503) 234-0548  
FAX: (503) 234-0677  
WWW.MBIA-ENG.COM  
CONTACT: Takako Baker

MERRYMAN BARNES ARCHITECTS 4713 WALBURN AVE. SUITE 304 PORTLAND, OREGON 97217 P. 503.222.2753 WWW.MERRYMANBARNESARCHITECTS.COM