

PRELIMINARY  
NOT FOR  
CONSTRUCTION

KING+PARKS MULTI-FAMILY RESIDENCES

PROJECT SITE: NE Martin Luther King Jr. Boulevard & N Rosa Parks Way  
OWNER: Portland Community Reinvestment Initiatives Inc. (PCRI)  
6329 NE Martin Luther King Jr. Blvd. Portland, Oregon 97211

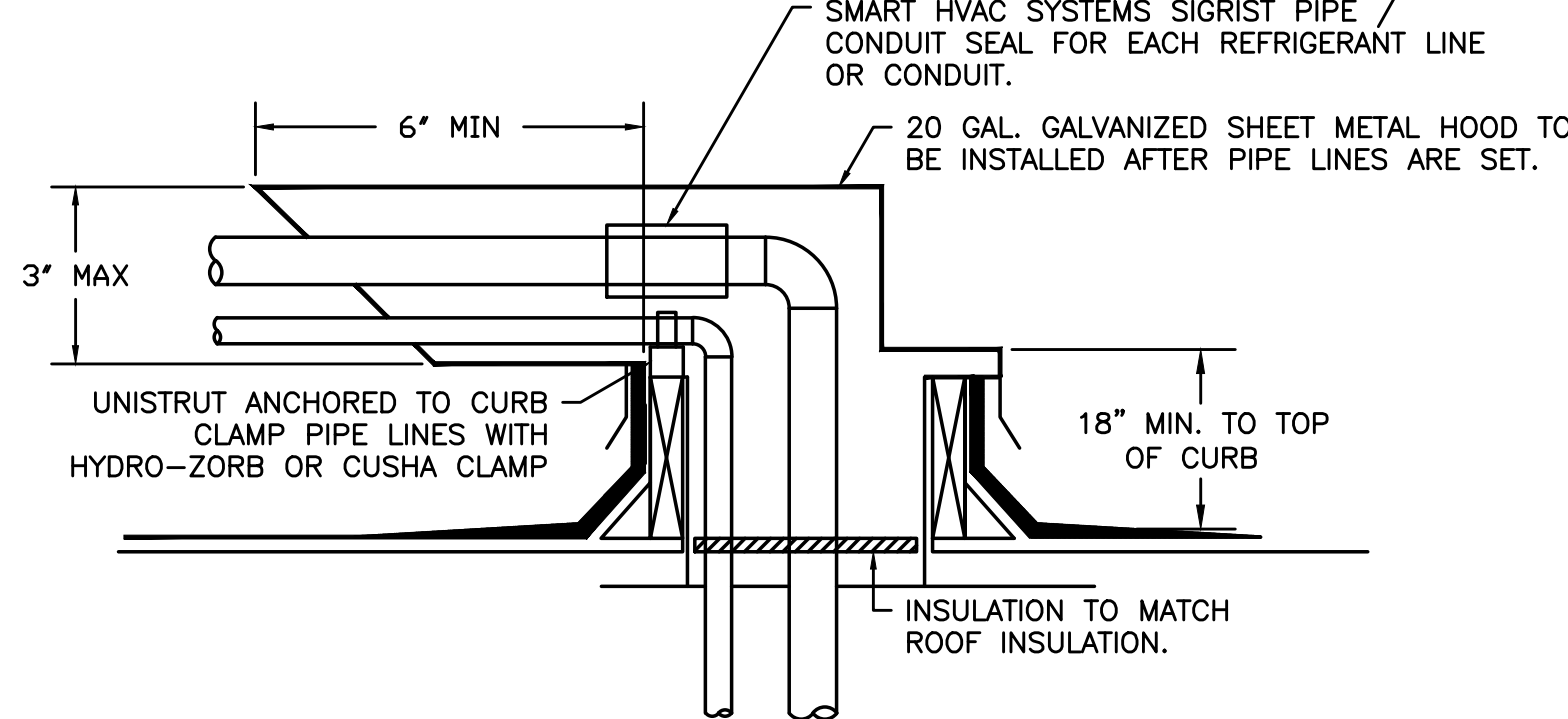


MERRYMAN BARNES ARCHITECTS 4713 WALBURN AVE. SUITE 304 PORTLAND, OREGON 97217 P. 503.222.2793 WWW.MERRYMANBARNESARCHITECTS.COM

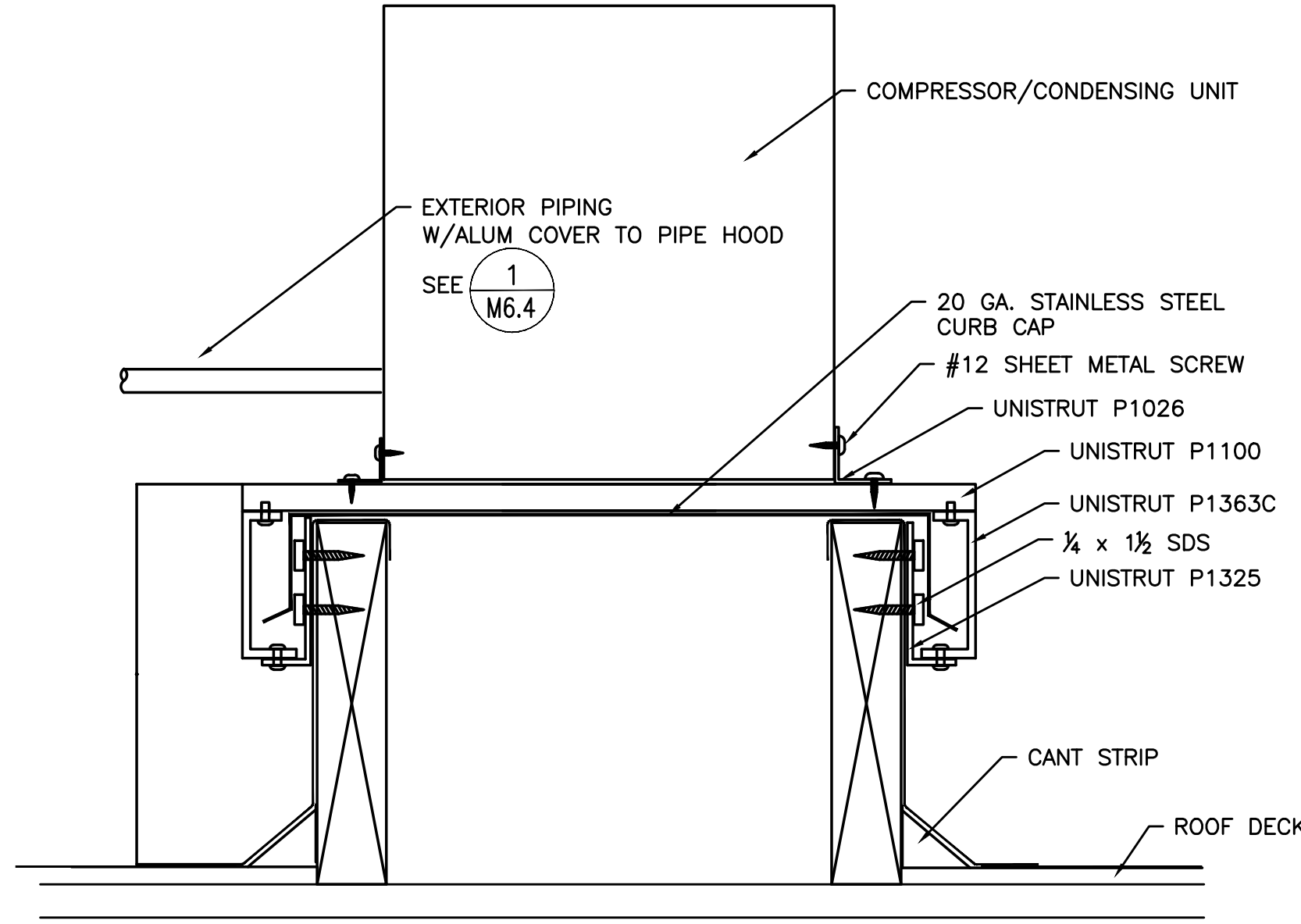
PROJECT NO. 16-0602  
ISSUE DATE 06.23.2017  
REVISIONS

SHEET  
MECHANICAL  
DETAILS  
**M6.4**  
NOT FOR CONSTRUCTION  
PRICING SET  
© MERRYMAN BARNES ARCHITECTS, INC.

MERRYMAN BARNES ARCHITECTS  
Consulting Engineers  
2007 S.E. Ash St.  
Portland, OR 97214  
PHN: (503) 234-0548  
FAX: (503) 234-0677  
WWW.MFIA-ENG.COM  
CONTACT: Takako Baker

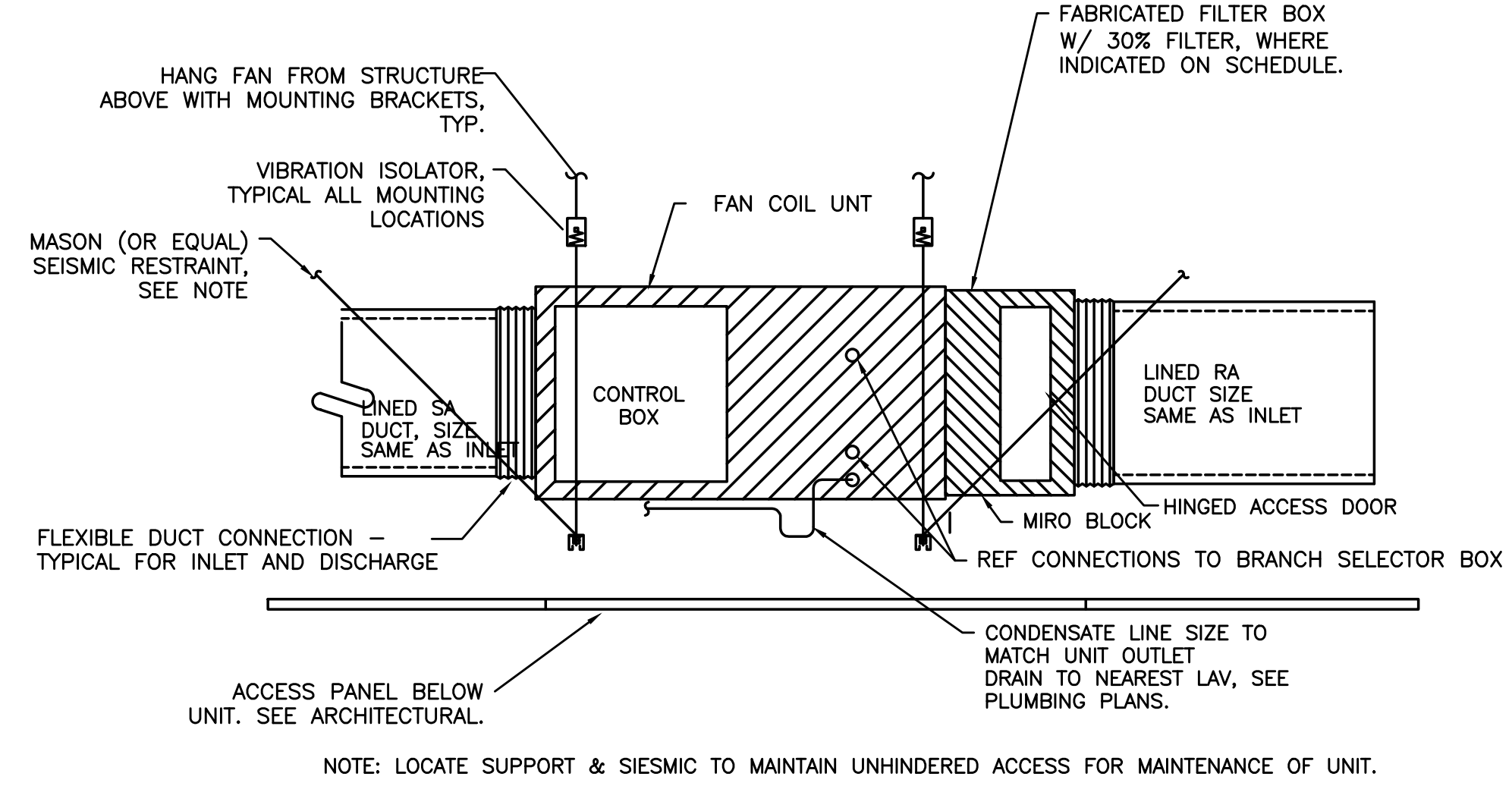


1 PIPE HOOD DETAIL  
M6.4 SCALE: DETAIL

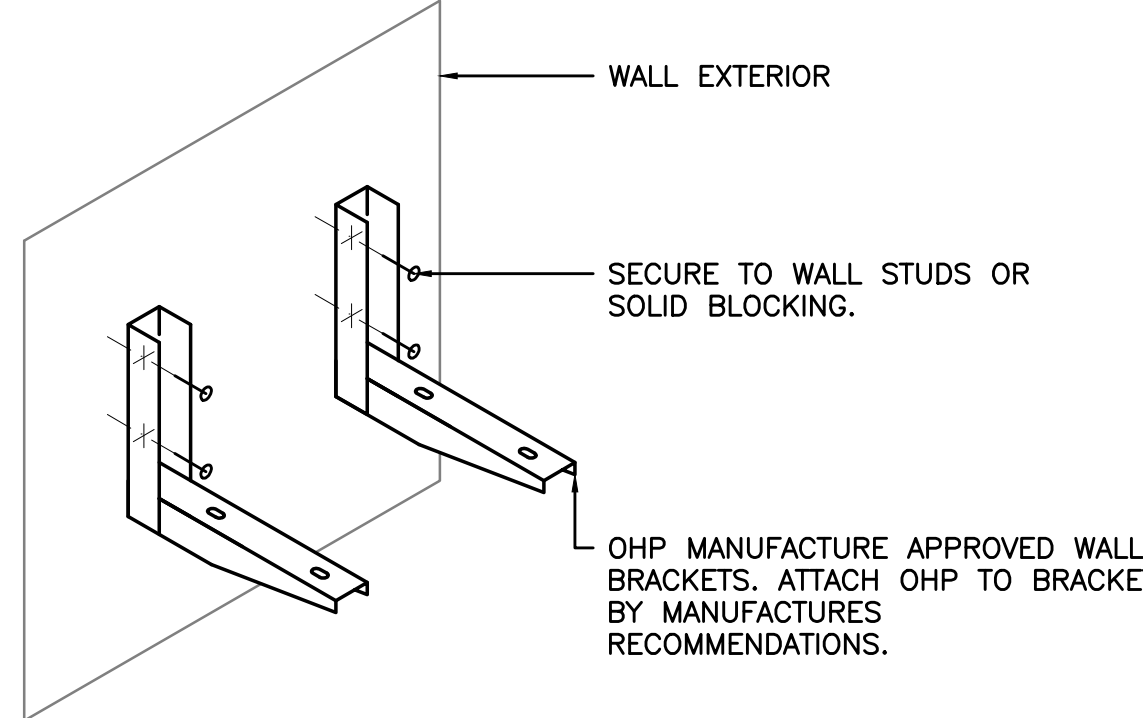


NO ANCHORS IN CURB CAP ALLOWED

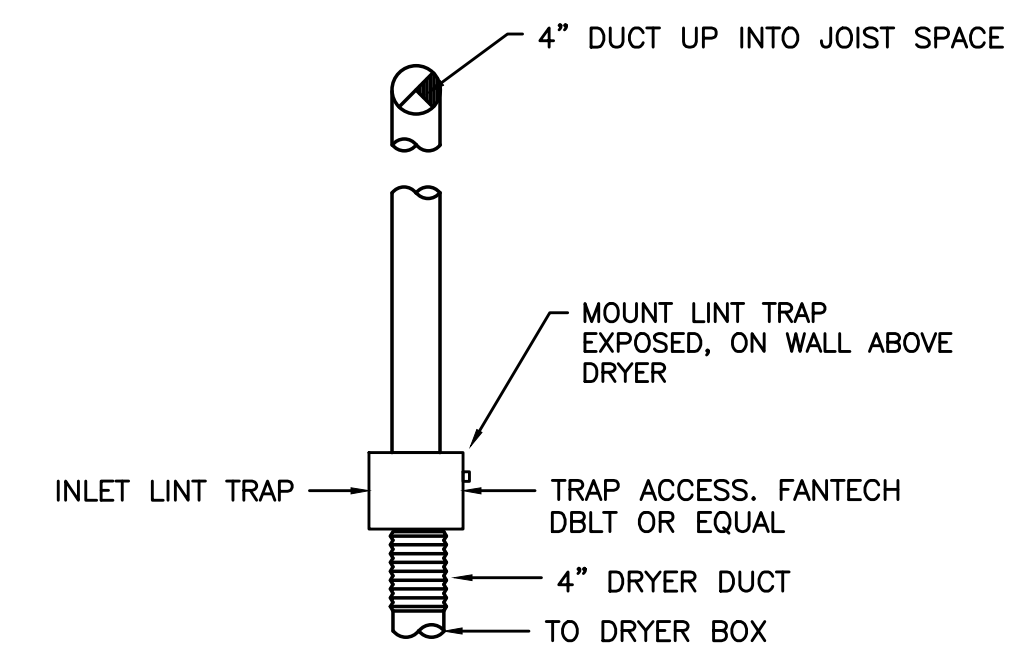
2 CONDENSER W/ CURB  
M6.4 SCALE: DETAIL



3 DUCTED FAN COIL (IHP)  
M6.4 SCALE: DETAIL



4 OHP MOUNTING DETAIL  
M6.4 SCALE: DETAIL



5 LINT TRAP  
M6.4 DETAIL