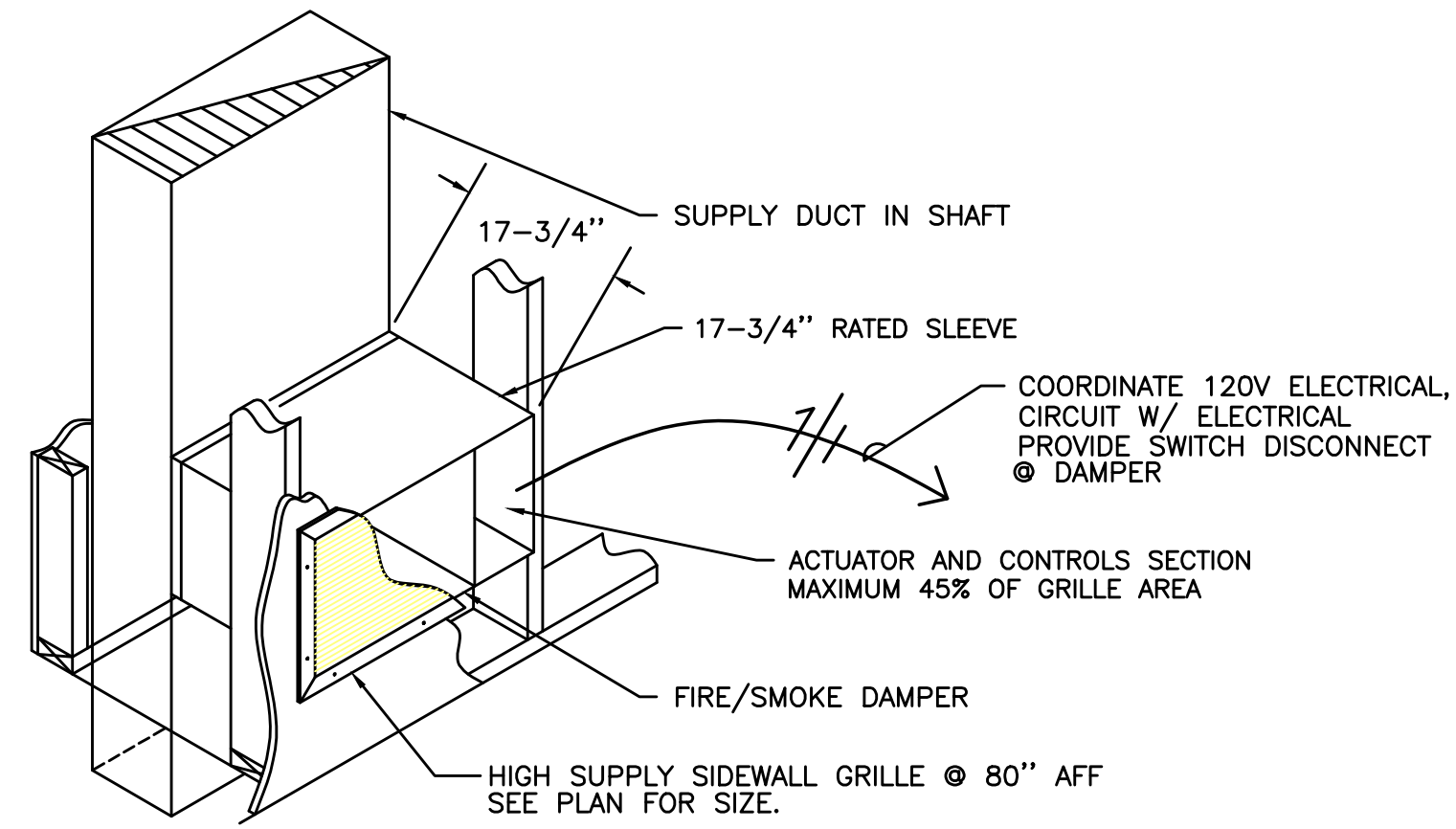
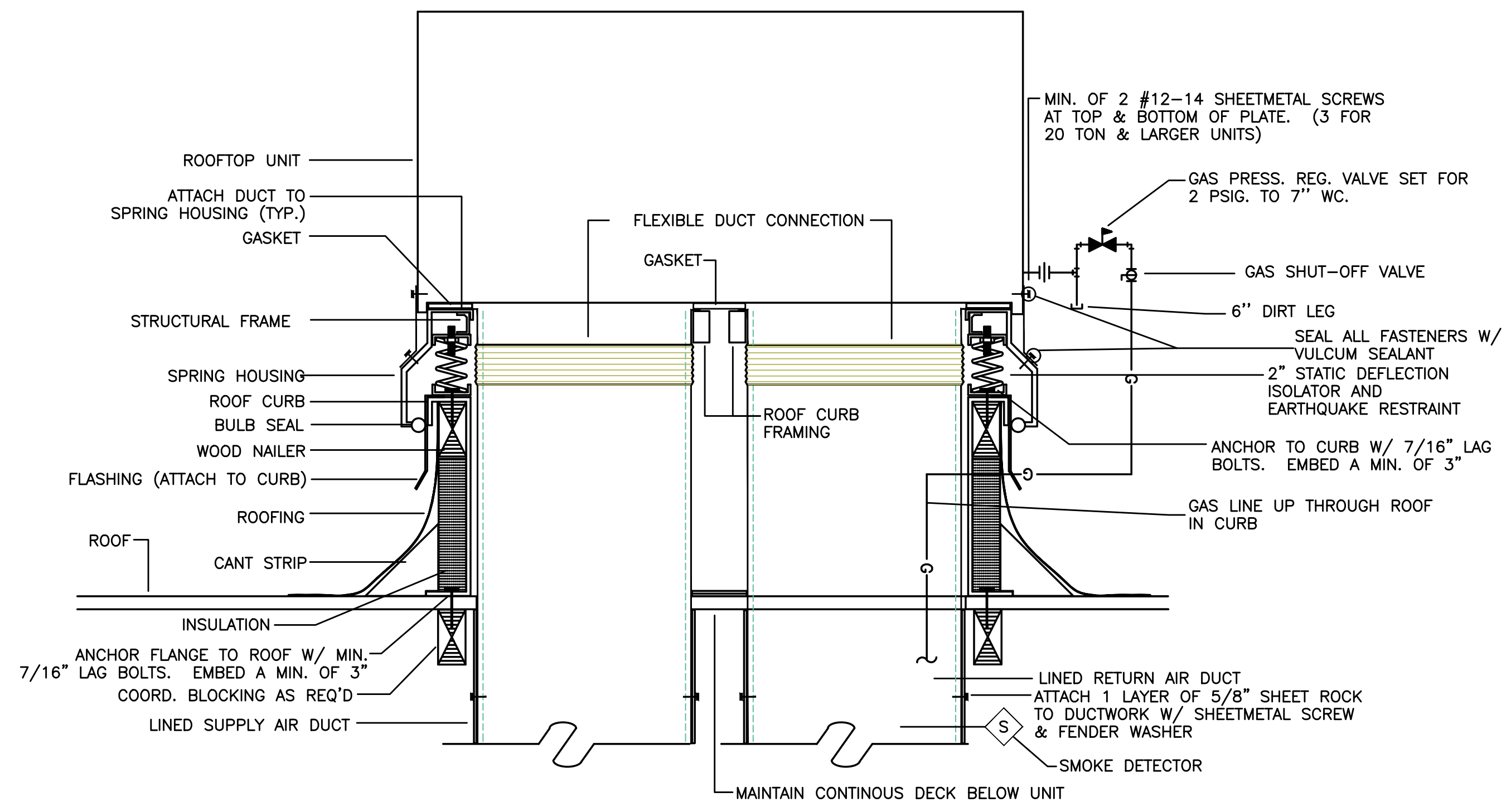


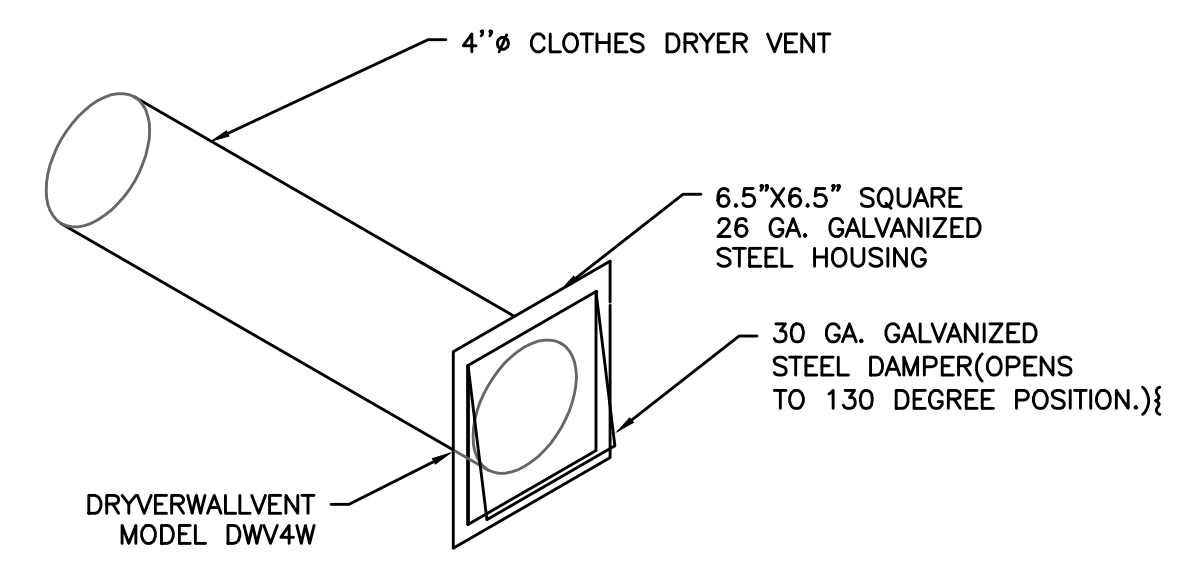
PRELIMINARY  
NOT FOR  
CONSTRUCTION



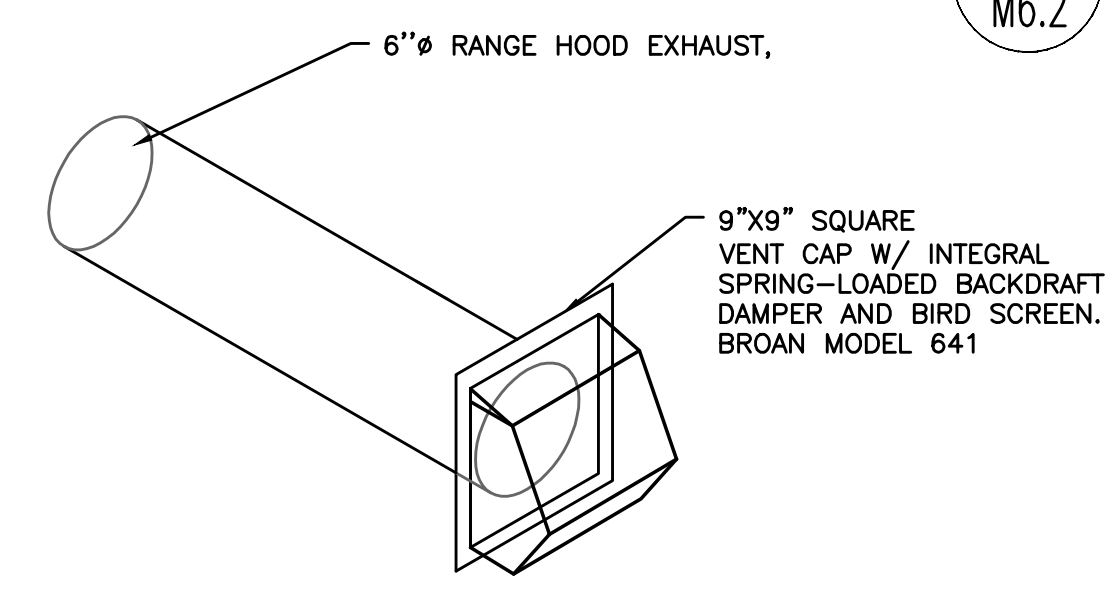
1 HIGH SUPPLY W/ FIRE/SMOKE DAMPER  
M6.2 SCALE: DETAIL



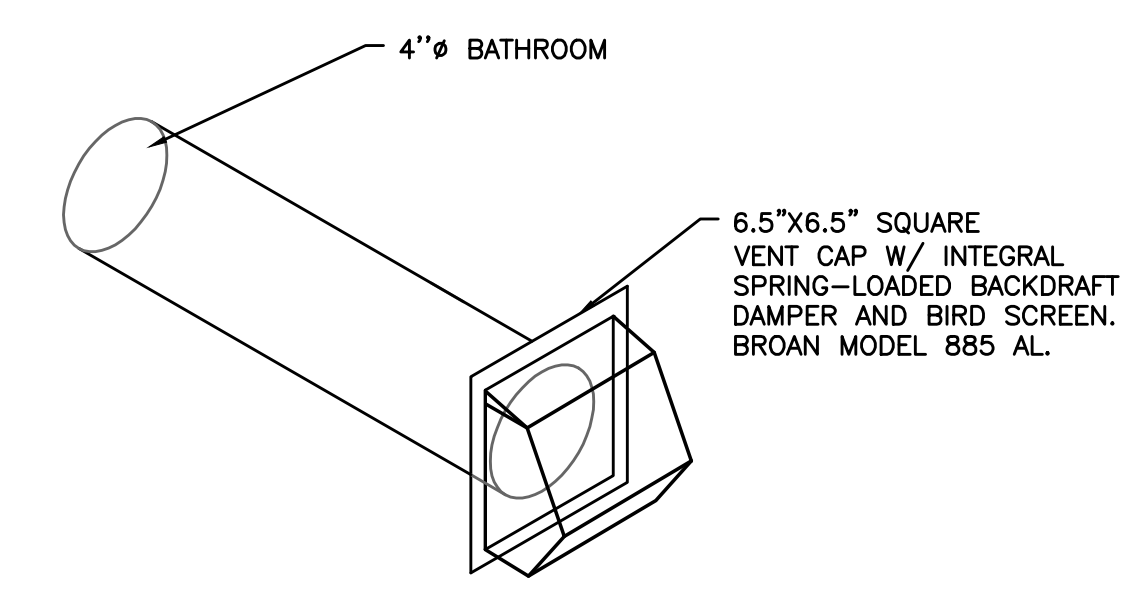
2 ROOF TOP UNIT W/ VIBRATION ISOLATION CURB  
M6.2 SCALE: DETAIL



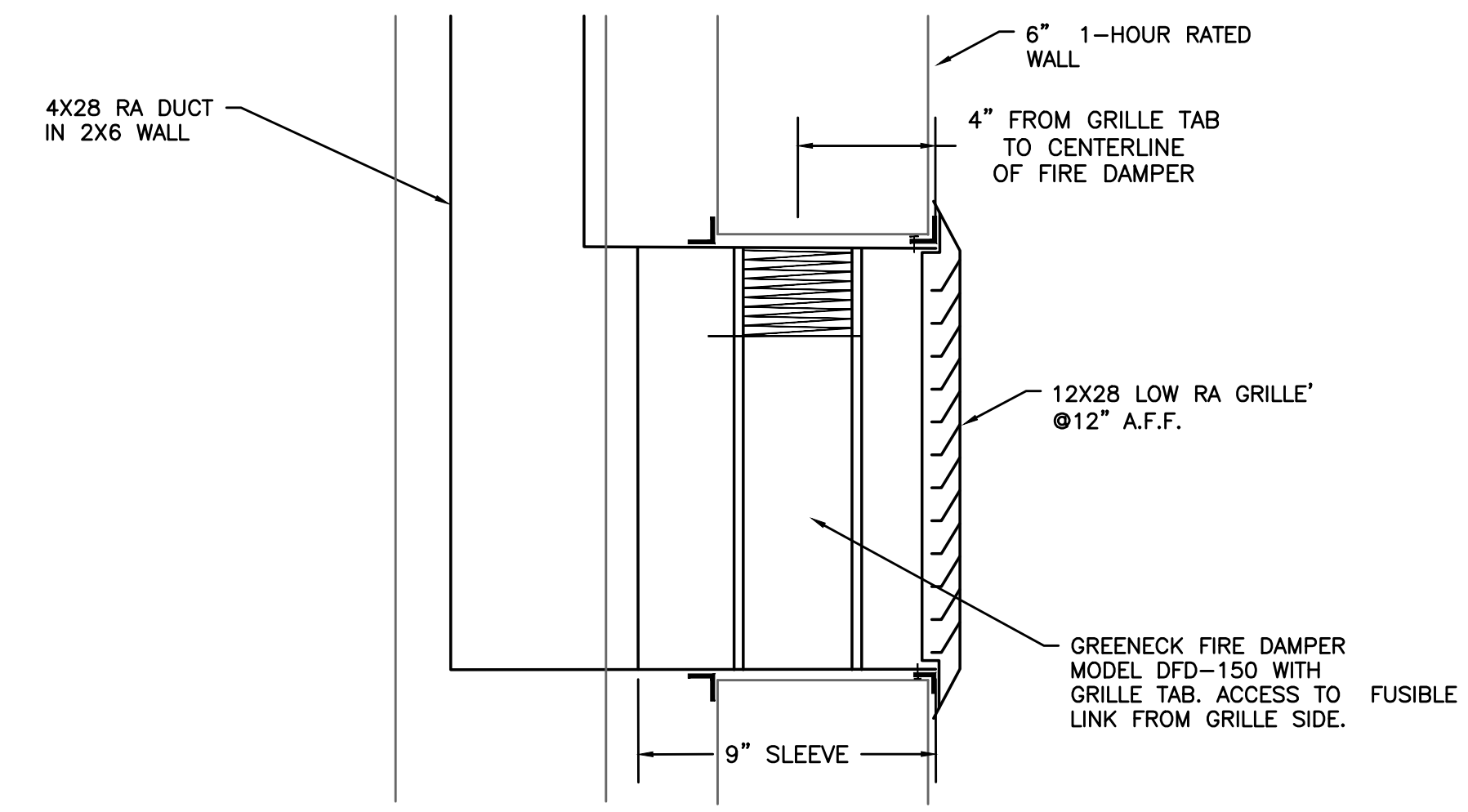
3 CLOTHES DRYER VENTING  
M6.2 NOT TO SCALE



4 SINGLE RANGE HOOD VENT  
M6.2 NOT TO SCALE



5 SIDE WALL VENTING, BATHROOM EXH FAN  
M6.2 NOT TO SCALE



6 LOW RA GRILLE  
M6.2 SCALE: DETAIL

KING+PARKS MULTI-FAMILY RESIDENCES

PROJECT SITE: NE Martin Luther King Jr. Boulevard & N Rosa Parks Way  
OWNER: Portland Community Reinvestment Initiatives Inc. (PCRI)  
6329 NE Martin Luther King Jr. Blvd. Portland, Oregon 97211



PROJECT NO. 16-0602  
ISSUE DATE 06.23.2017

REVISIONS


SHEET  
MECHANICAL  
DETAILS  
**M6.2**  
NOT FOR CONSTRUCTION  
PRICING SET  
© MERRYMAN BARNES ARCHITECTS, INC.

Merryman Barnes Architects  
Consulting Engineers  
2007 S.E. Ash St.  
Portland, OR 97214  
PHN: (503) 234-0548  
FAX: (503) 234-0677  
WWW.MBA-ENG.COM  
CONTACT: Takako Baker

MERRYMAN BARNES ARCHITECTS 4713 N ALBINA AVE. SUITE 304 PORTLAND, OREGON 97217 P. 503.222.2793 WWW.MERRYMANBARNESARCHITECTS.COM