

PRELIMINARY
NOT FOR
CONSTRUCTION

KING+PARKS MULTI-FAMILY RESIDENCES

PROJECT SITE: NE Martin Luther King Jr. Boulevard & N Rosa Parks Way
OWNER: Portland Community Reinvestment Initiatives Inc. (PCRI)
6329 NE Martin Luther King Jr. Blvd. Portland, Oregon 97211



PROJECT NO. 16-0602
ISSUE DATE 06.23.2017

REVISIONS

SHEET
MECHANICAL 3RD
FLOOR PLAN

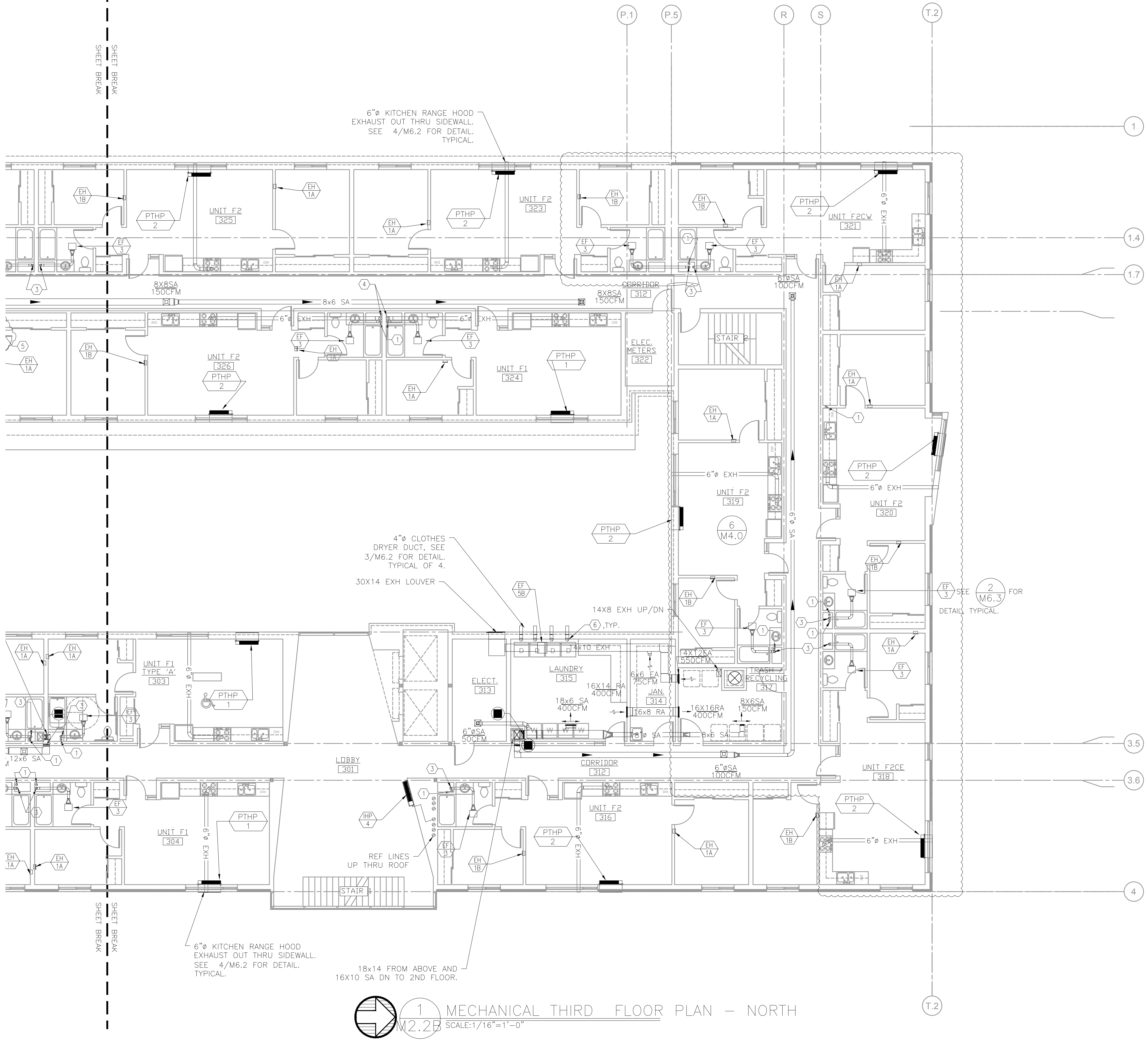
M2.2B

NOT FOR CONSTRUCTION

PRICING SET

© MERRYMAN BARNES ARCHITECTS, INC.

MERRYMAN BARNES ARCHITECTS 4713 N ALBINA AVE SUITE 304 PORTLAND, OREGON 97217 P. 503.222.3753 WWW.MRYMANBARNESARCHITECTS.COM



1 MECHANICAL THIRD FLOOR PLAN - NORTH
SCALE: 1/16" = 1'-0"

MFA Consulting Engineers
2007 S.E. Ash St.
Portland, OR 97214
PHN: (503) 234-0548
FAX: (503) 234-0677
WWW.MFA-ENG.COM
CONTACT: TAKAKO BAKER