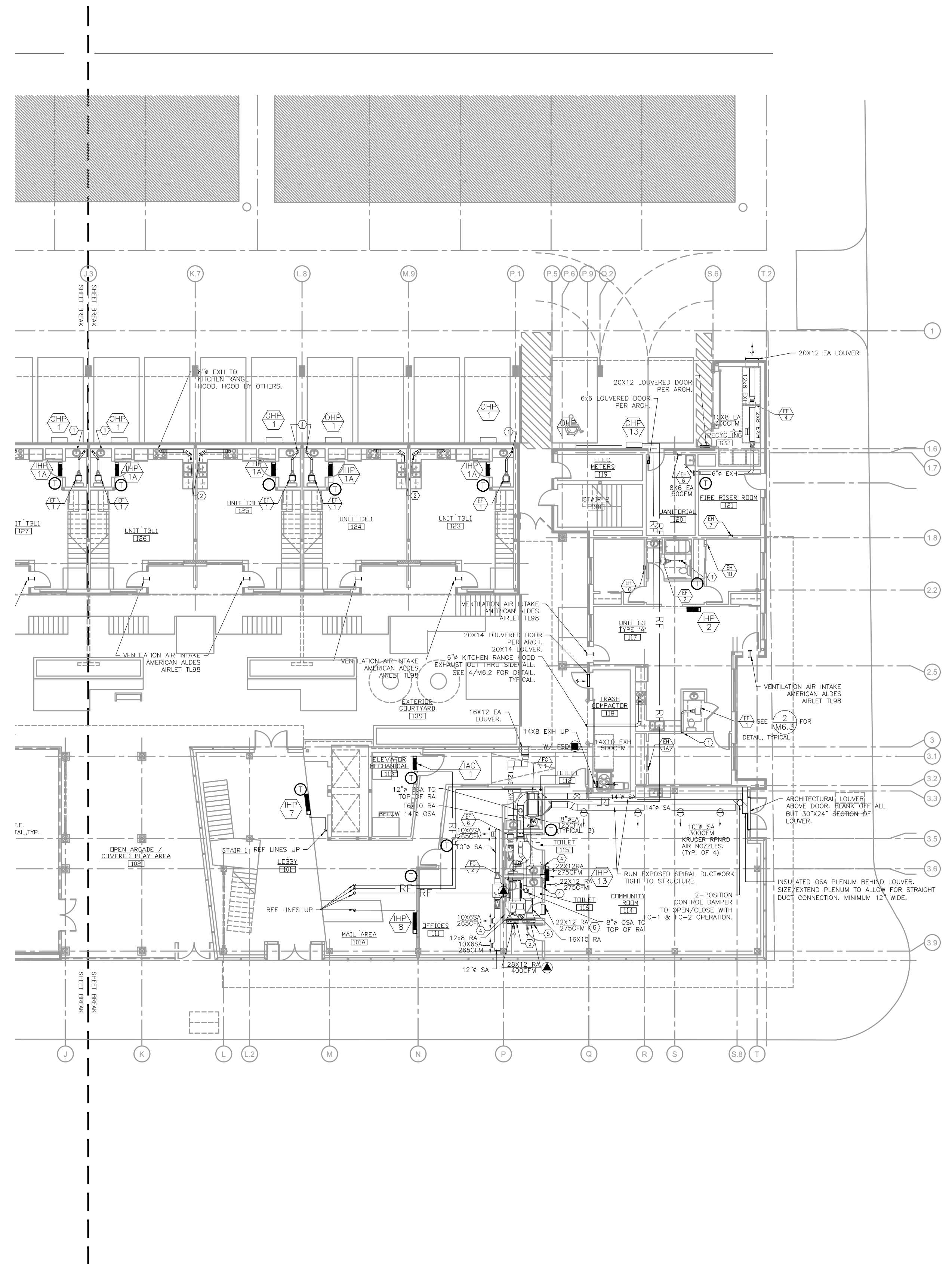


PRELIMINARY
NOT FOR
CONSTRUCTION



- KEYED NOTES:**
- 4" BA EXH UP.
 - 6" RANGE HOOD EXH UP.
 - LINT TRAPS ON DRYER. SEE 5/M6.4 FOR DETAIL. 4" DRYER EXHAUST DUCT WITH RECESSED DRYER BOX, CONSTRUCTION SOLUTIONS DBX1000, OR APPROVED EQUAL.
 - 22X4 RA DN IN WALL TO LOW RA GRILLE. INSTALL RA GRILLE @ 12" ABOVE COMMUNITY ROOM F.F. ELEV.
 - 28X4 RA DN IN WALL TO LOW RA GRILLE. INSTALL RA GRILLE @ 12" ABOVE OFFICE F.F. ELEVATION WITH FIRE DAMPER. SEE 6/M6.2 FOR DETAIL.
 - INSTALL RA GRILLE ON CENTER ABOVE
- GENERAL NOTES:**
- LIQ & SUCTION REF LINES ARE SHOWN AS A SINGLE PIPE FOR THE PURPOSE OF SHOWING ROUTING OF THE PIPING.
 - SIDEWALL EXHAUST TERMINATIONS TO BE LOCATED 3'-0" MIN RADIUS FROM ANY OPERABLE WINDOWS. SEE ARCHITECTURAL ELEVATIONS.
 - TYPICAL DRYER DUCT TO BE CONSTRUCTED AS FOLLOWS: MATERIAL SHALL HAVE A SMOOTH INTERIOR FINISH AND BE 0.016 INCH THICK. RIVET OR SCREW PENETRATIONS TO THE DUCT WALL ARE NOT ACCEPTABLE. DRYER DUCT SHALL BE SUPPORTED EVERY 4 FOOT INTERVALS.
 - SEE SHEET M6.8 FOR WALL PENETRATION DETAILS. SEE ARCHITECTURAL FOR FLOOR/CEILING PENETRATION DETAIL.

1 MECHANICAL FIRST FLOOR PLAN - NORTH
M2.0B SCALE: 1/16" = 1'-0"

KING+PARKS MULTI-FAMILY RESIDENCES

PROJECT SITE: NE Martin Luther King Jr. Boulevard & N Rosa Parks Way
OWNER: Portland Community Reinvestment Initiatives Inc. (PCRI)
6329 NE Martin Luther King Jr. Blvd. Portland, Oregon 97211

PROJECT NO. 16-0602
ISSUE DATE 06.23.2017

REVISIONS

NO.	DESCRIPTION

SHEET
MECHANICAL 1ST
FLOOR PLAN - NORTH
M2.0B

M Consulting Engineers
E 2007 S.E. Ash St.
I Portland, OR 97214
A PHN: (503) 234-0548
INC. FAX: (503) 234-0677
WWW.MEIA-ENG.COM
CONTACT: Takako Baker

NOT FOR CONSTRUCTION
PRICING SET
© MERRYMAN BARNES ARCHITECTS, INC.

MBA
MERRYMAN BARNES ARCHITECTS 4713 N ALBINA AVE SUITE 304 PORTLAND, OREGON 97217 P. 503.222.3753 WWW.MERRYMANBARNESARCHITECTS.COM